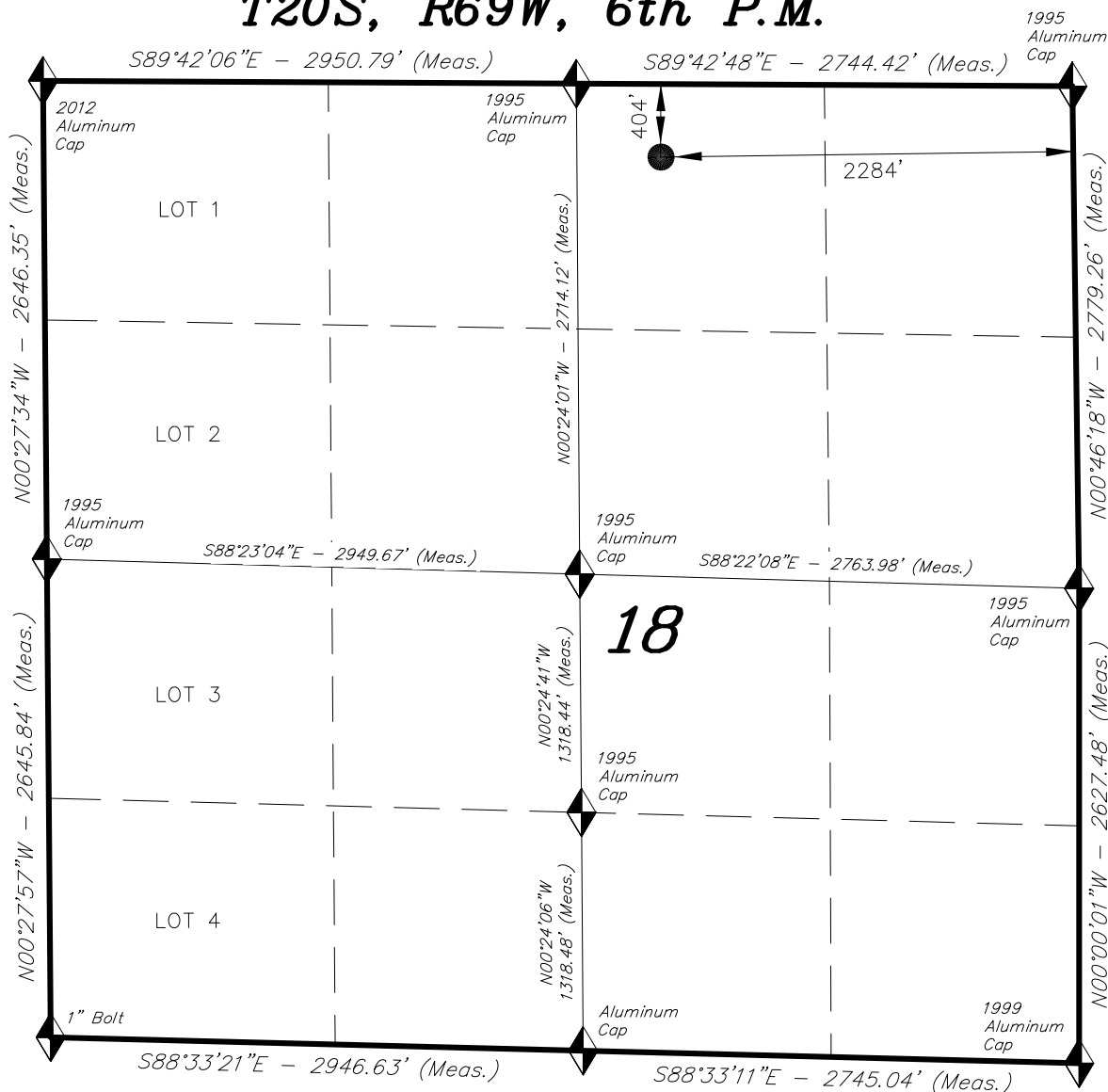
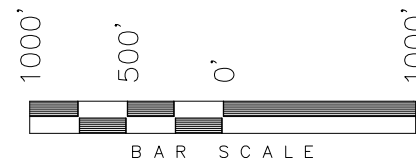


**T20S, R69W, 6th P.M.**

**AUS-TEX EXPLORATION INC**



WELL LOCATION, PATHFINDER C18 #8,  
LOCATED AS SHOWN IN THE NW 1/4  
NE 1/4 OF SECTION 18, T20S, R69W,  
6th P.M. FREMONT, COLORADO.



**NOTES:**

1. Well footages are measured at right angles to the Section Lines.
2. Bearings are based on Global Positioning Satellite observations.
3. G.P.S. Operator: D. Petty, (PDOP) = 2.2

**WELL LOCATION:  
PATHFINDER C18 #8**

ELEV. UNGRADED GROUND = 5797.1'

THIS IS TO CERTIFY THAT THE ABOVE PLAT WAS  
PREPARED FROM FIELD NOTES OF SURVEYS  
MADE BY ME OR UNDER MY SUPERVISION. THE  
LOCATION HAS BEEN STAKED ON THE GROUND AS  
SHOWN ON THE PLAT, AND THAT THE SAME ARE  
TRUE AND CORRECT TO THE BEST OF MY  
KNOWLEDGE AND BELIEF.

05-27-14  
# 30125  
REGISTERED LAND SURVEYOR  
REGISTRATION NO. 250025  
STATE OF COLORADO

◆ = SECTION CORNERS LOCATED

BASIS OF ELEV; U.S.G.S. 7-1/2 min QUAD  
(Rockvale)

NAD 83 (SURFACE LOCATION)	
LATITUDE	= 38°18'53.18" (38.314773°)
LONGITUDE	= 105°09'02.00" (105.150555°)

**TRI STATE LAND SURVEYING & CONSULTING**

180 NORTH VERNAL AVE. - VERNAL, UTAH 84078  
(435) 781-2501

DATE SURVEYED: 05-06-14	SURVEYED BY: D.P.	SHEET  <b>1</b>
DATE DRAWN: 05-27-14	DRAWN BY: M.W.	
REVISED:	SCALE: 1" = 1000'	