

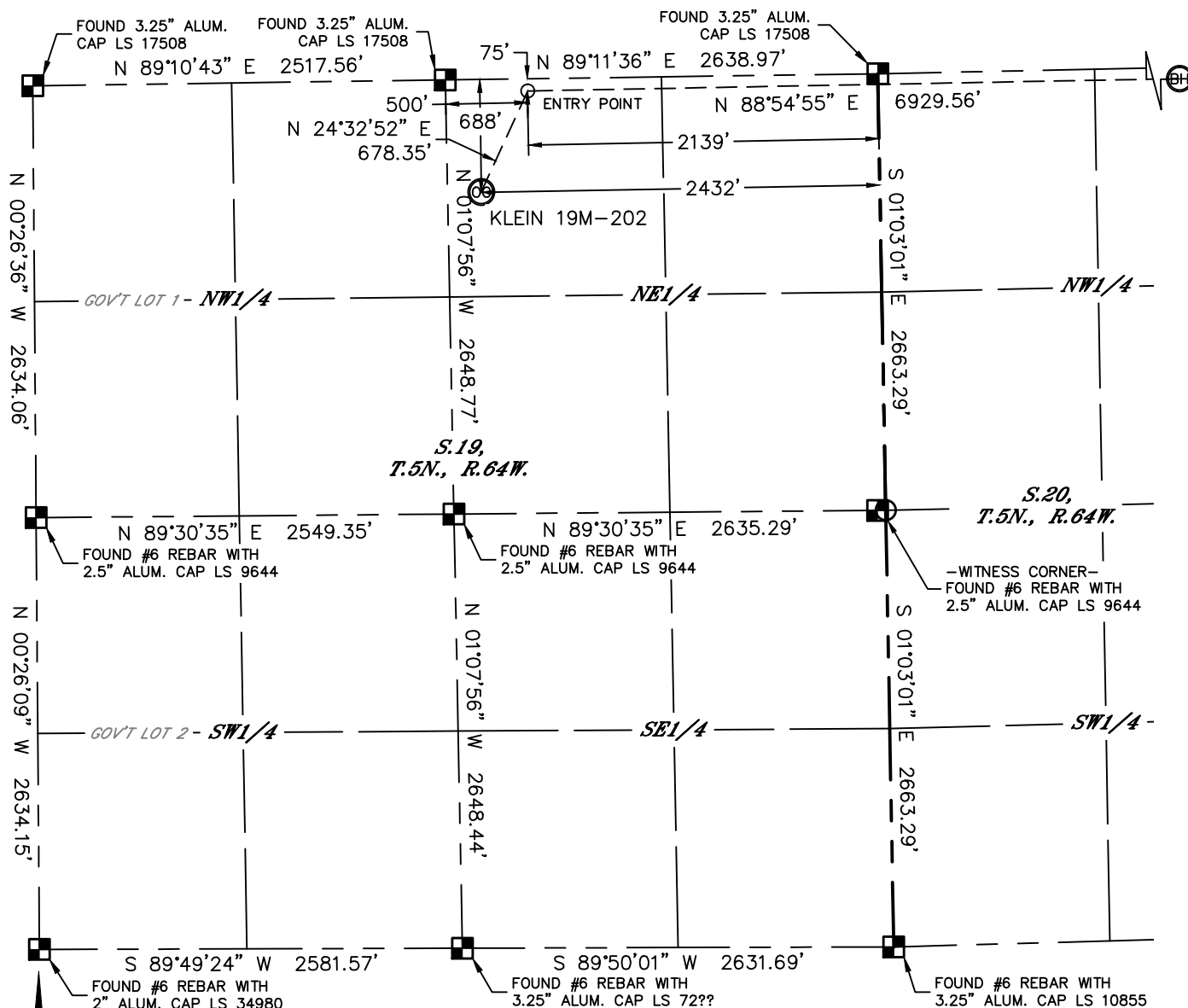


Lat40°, Inc. 1635 Foxtrail Drive, Suite 325 Loveland, CO 970-776-3321

# WELL LOCATION CERTIFICATE

THIS MAP DOES NOT REPRESENT A BOUNDARY SURVEY

SECTION: 19  
TOWNSHIP: 5N  
RANGE: 64W



In accordance with a request from Al Bragg with PDC ENERGY Lat40°, Inc. has determined the surface location of the KLEIN 19M-202 to be 688' from the NORTH line and 2432' from the EAST line as measured at right angles from the section lines of Section 19, Township 5 North, Range 64 West and the bottom hole to be 75' from the NORTH line and 500' from the EAST line as measured at right angles from the section lines of Section 20, Township 5 North, Range 64 West of the Sixth Principal Meridian, County of Weld, State of Colorado.

I hereby state that this Well Location Certificate was prepared by me, or under my direct supervision, that the fieldwork was completed on 11/26/2013, for and on behalf of PDC ENERGY That this is not a Land Survey Plat or an Improvement Survey Plat, and that it is not to be relied upon for establishment of fence, building, or other future improvement lines.

**SURFACE LOCATION**  
LAT: 40.38999°N  
LONG: 104.59208°W  
PDOP: 2.1  
ELEV: 4628'  
1/4,1/4: NW1/4NE1/4

**BOTTOM HOLE**  
LAT: 40.39184°N  
LONG: 104.56618°W  
1/4,1/4: NE1/4NE1/4

**ENTRY POINT**  
LAT: 40.39167°N  
LONG: 104.59105°W  
1/4,1/4: NW1/4NE1/4

## LEGEND

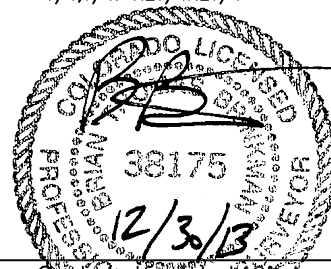
- = ALIQUOT MONUMENT AS DESCRIBED
- = CALCULATED POSITION

## SHEET 1 OF 2

Brian T. Brinkman—On behalf of Lat40°, Inc.  
Colorado Licensed Professional Land Surveyor No. 38175  
DATE: 12/30/2013  
PROJECT#: 2013130

## NOTE:

- 1) Bearings shown are Grid Bearings of the Colorado State Plane Coordinate System, North Zone, North American Datum 1983/2007. The lineal dimensions as contained herein are based upon the "U.S. Survey Foot."
- 2) Ground elevations are based on an observed GPS elevation (NAVD 1988 DATUM).
- 3) IMPROVEMENTS: See LOCATION DRAWING for all visible improvements within 500' of disturbed area.
- 4) SURFACE USE: CROPLAND
- 5) INSTRUMENT OPERATOR: BRIAN ROTTINGHAUS
- 6) NEAREST CULTURAL ITEMS:  
BUILDING: ±408' NW  
BUILDING UNIT: ±500' NW  
HIGH OCCUPANCY BUILDING UNIT: 5280'+  
DESIGNATED OUTSIDE ACTIVITY AREA: 5280'+  
PUBLIC ROAD: HIGHWAY 34, 691' N  
ABOVEGROUND UTILITY: 200' W  
RAILROAD: ±3189' SE  
PROPERTY LINE: 206' W



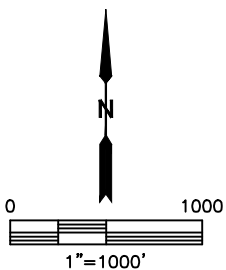
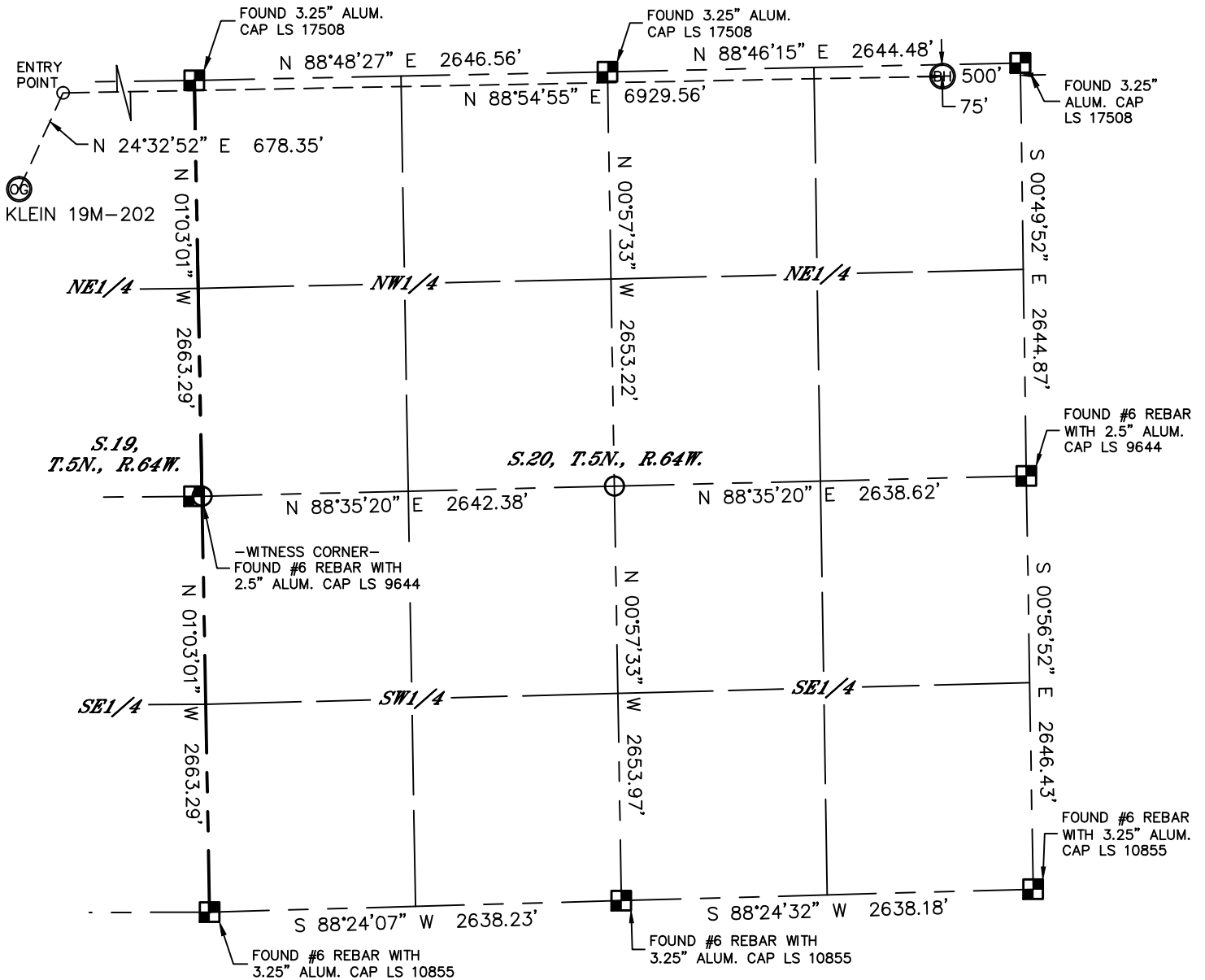


Lat40°, Inc. 1635 Foxtrail Drive, Suite 325 Loveland, CO 970-776-3321

# WELL LOCATION CERTIFICATE

THIS MAP DOES NOT REPRESENT A BOUNDARY SURVEY

SECTION: 19  
TOWNSHIP: 5N  
RANGE: 64W



## LEGEND

- = ALIQUOT MONUMENT AS DESCRIBED
- = CALCULATED POSITION

## SHEET 2 OF 2

Brian T. Brinkman—On behalf of Lat40°, Inc.  
Colorado Licensed Professional Land Surveyor No. 38175  
DATE: 12/30/2013  
PROJECT#: 2013130

