



RADIAL CEMENT BOND
GAMMA RAY
CCL

Company		KERR MCGEE OIL AND GAS		Company		KERR MCGEE OIL AND GAS	
Well		STATE 3-16		Well		STATE 3-16	
Field		WATTENBERG		Field		WATTENBERG	
County		WELD		County		WELD	
State		CO		State		CO	
Location:		SHL 1437' FNL & 1039' FWL SW/NW		API # : 05-123-29117		Other Services	
Permanent Datum		GL		SEC 16 TWP 1N RGE 68W		Elevation	
Log Measured From		KB 15'				K.B. 5174'	
Drilling Measured From		KB				D.F. 5173'	
						G.L. 5159'	
Date		8-1-2014					
Run Number		ONE					
Depth Driller		8245'					
Depth Logger		1347'					
Bottom Logged Interval		1344'					
Top Log Interval		SURFACE					
Open Hole Size		7.875					
Type Fluid		WATER					
Density / Viscosity		1.0					
Max. Recorded Temp.		82 DEG F					
Estimated Cement Top		818'					
Time Well Ready		N/A					
Time Logger on Bottom		N/A					
Equipment Number		4310					
Location		GREELEY					
Recorded By		N. BREHMER					
Witnessed By		B. SMITH					
Borehole Record		Tubing Record					
Run Number		Bit		From		To	
ONE							
TWO							
Casing Record		Size		Wgt/Ft		Top	
Surface String		8.63		24#		SURFACE	
Prot. String							
Production String		4.5		11.6#		SURFACE	
Liner						8225'	

<<< Fold Here >>>

All interpretations are opinions based on inferences from electrical or other measurements and we cannot and do not guarantee the accuracy or correctness of any interpretation, and we shall not, except in the case of gross or willful negligence on our part, be liable or responsible for any loss, costs, damages, or expenses incurred or sustained by anyone resulting from any interpretation made by any of our officers, agents or employees. These interpretations are also subject to our general terms and conditions set out in our current Price Schedule.


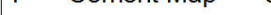
Comments

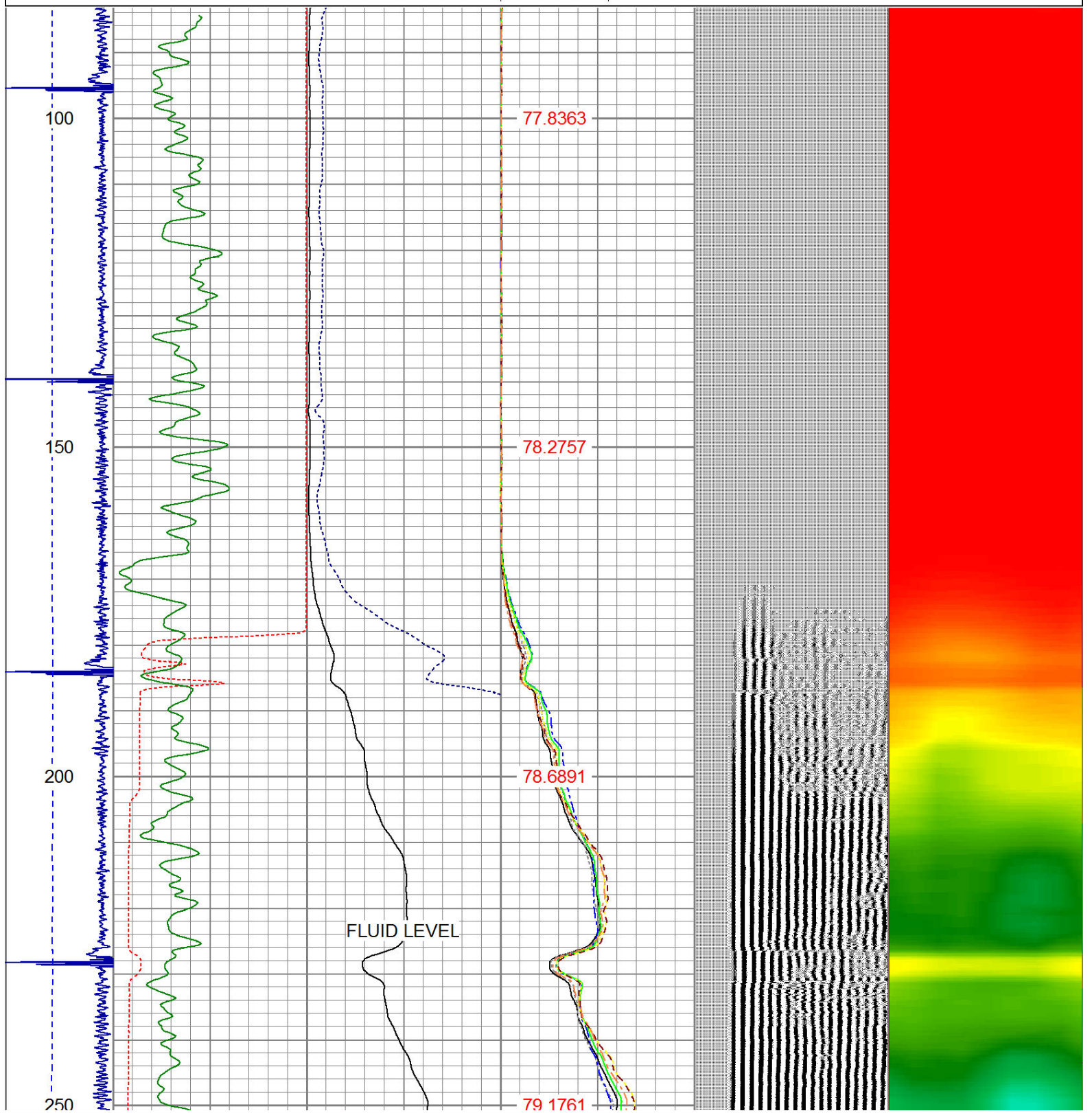
RAN CBL TO VERIFY CEMENT BOND

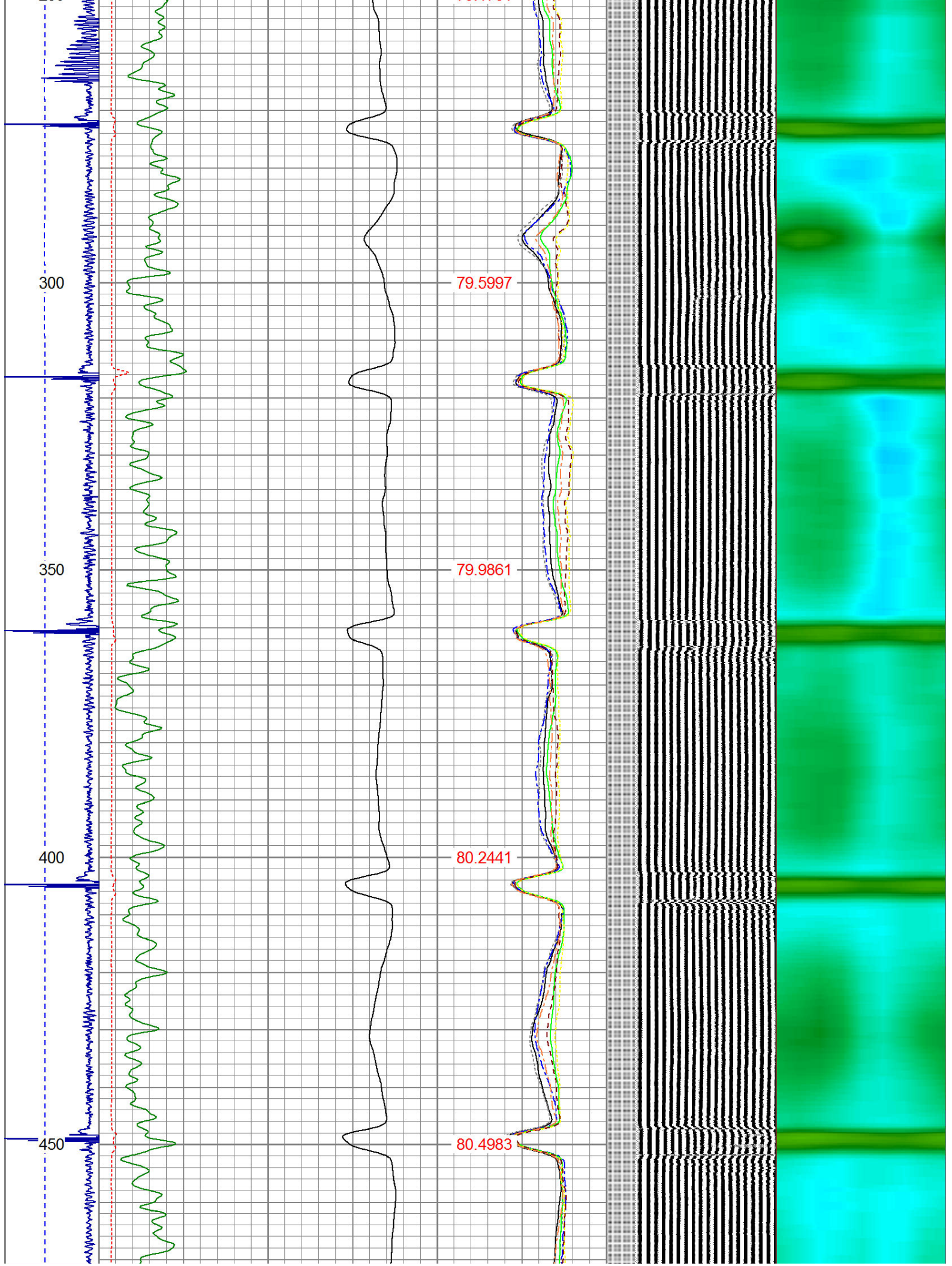
THANK YOU FOR USING WARRIOR !!!!!!!

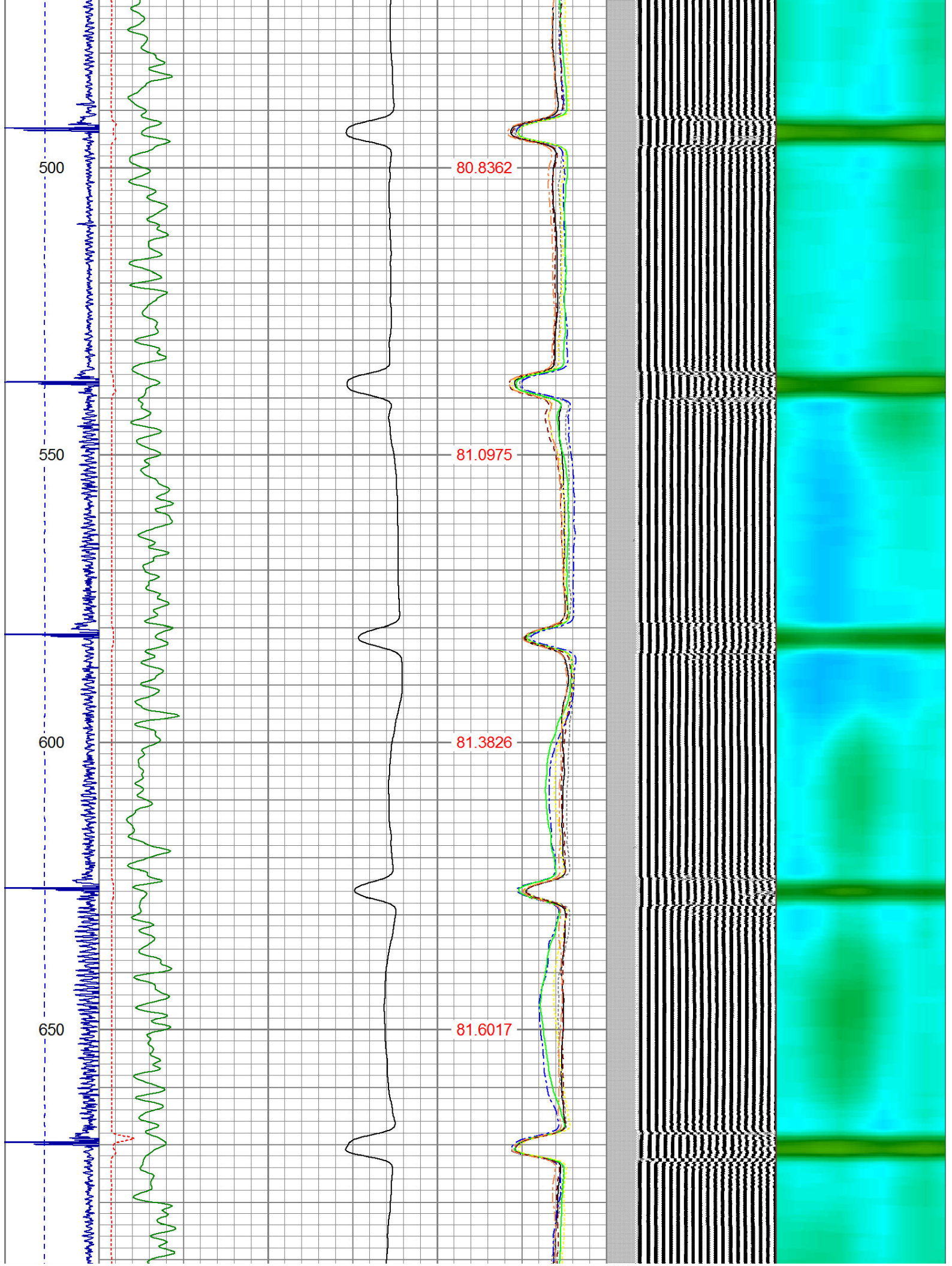
Sensor	Offset (ft)	Schematic	Description	Len (ft)	OD (in)	Wt (lb)

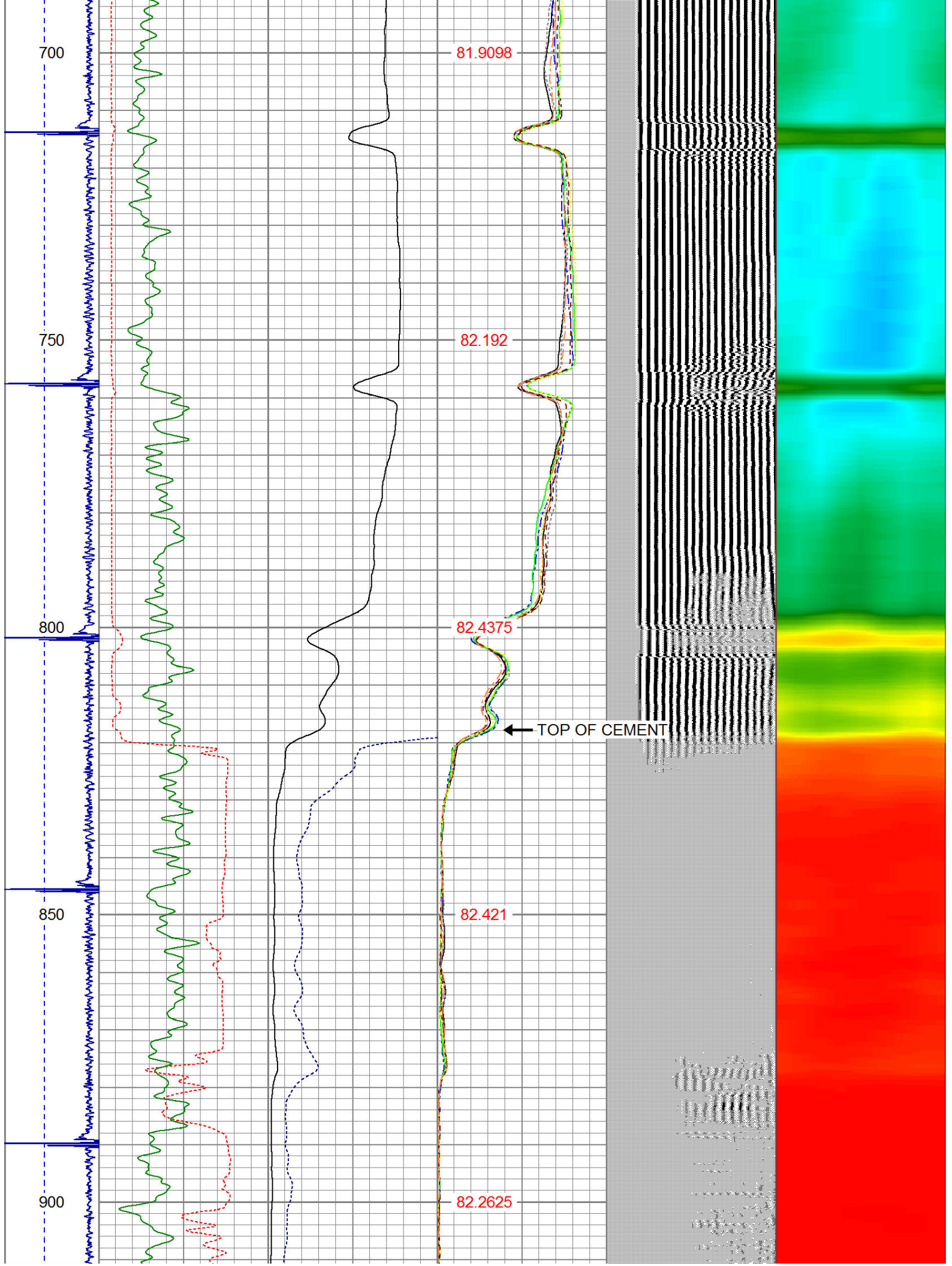
CNLSC	17.75		CNT-Probe_B (275) 6 bow centralizer	3.00	2.75	40.00
CNSSC	16.92					
HEADVOLT	16.08					
IntTemp	14.67					
WVFS3FT	11.42					
WVFCAL	11.42					
WVFS1	11.42					
WVFS2	11.42					
WVFS3	11.42					
WVFS4	11.42					
WVFS5	11.42					
WVFS6	11.42					
WVFS7	11.42					
WVFS8	11.42					
WVFS5FT	10.42					
			RBT-Probe (Base) Probe Radii Bond Tool with Digital Telemetry	8.92	2.75	90.00
			PTS275	2.83	2.75	
CCL	3.64					
			GR-Probe (275) Probe 2.75"	4.33	2.75	30.00
GR	0.90					
Dataset: state 3-16.db: field/well/run1/pass2 Total Length: 19.08 ft Total Weight: 160.00 lb O.D. 2.75 in						

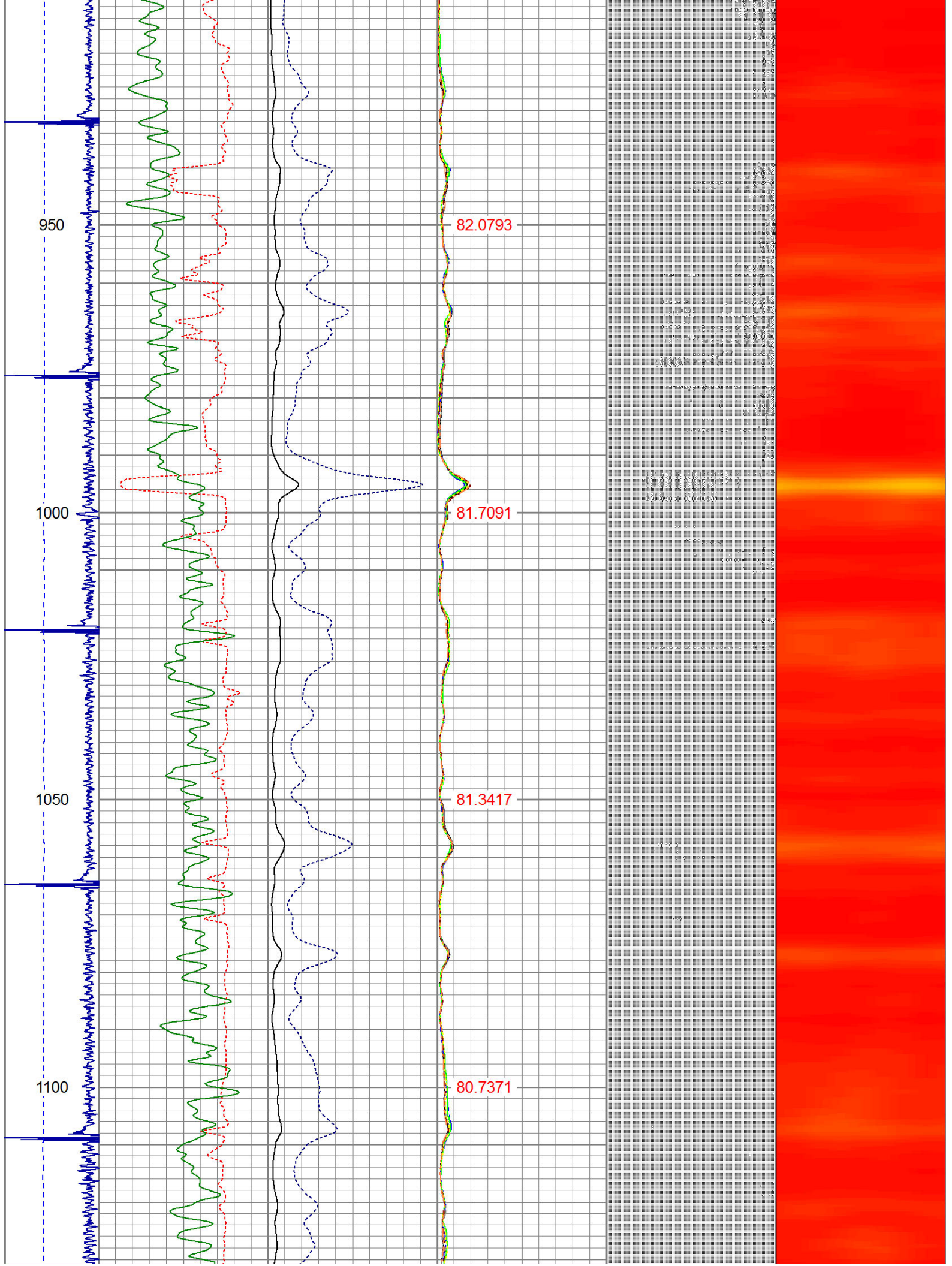
-9	CCL	1	200	TT (usec)	1100	0	AMP (mV)	100	0	AMPS1	100	200	VDL	1200	1	Cement Map	8
LSPD (ft/min)			0	GR (GAPI)	200	0	AMPx5 (mV)	20	0	AMPS2	100				1		
			200	GR (GAPI)	400	0	AMPS4	100									
0250									0	AMPS5	100						
									0	AMPS6	100						
									0	AMPS7	100						
									0	AMPS8	100						
									IntTemp (degF)								

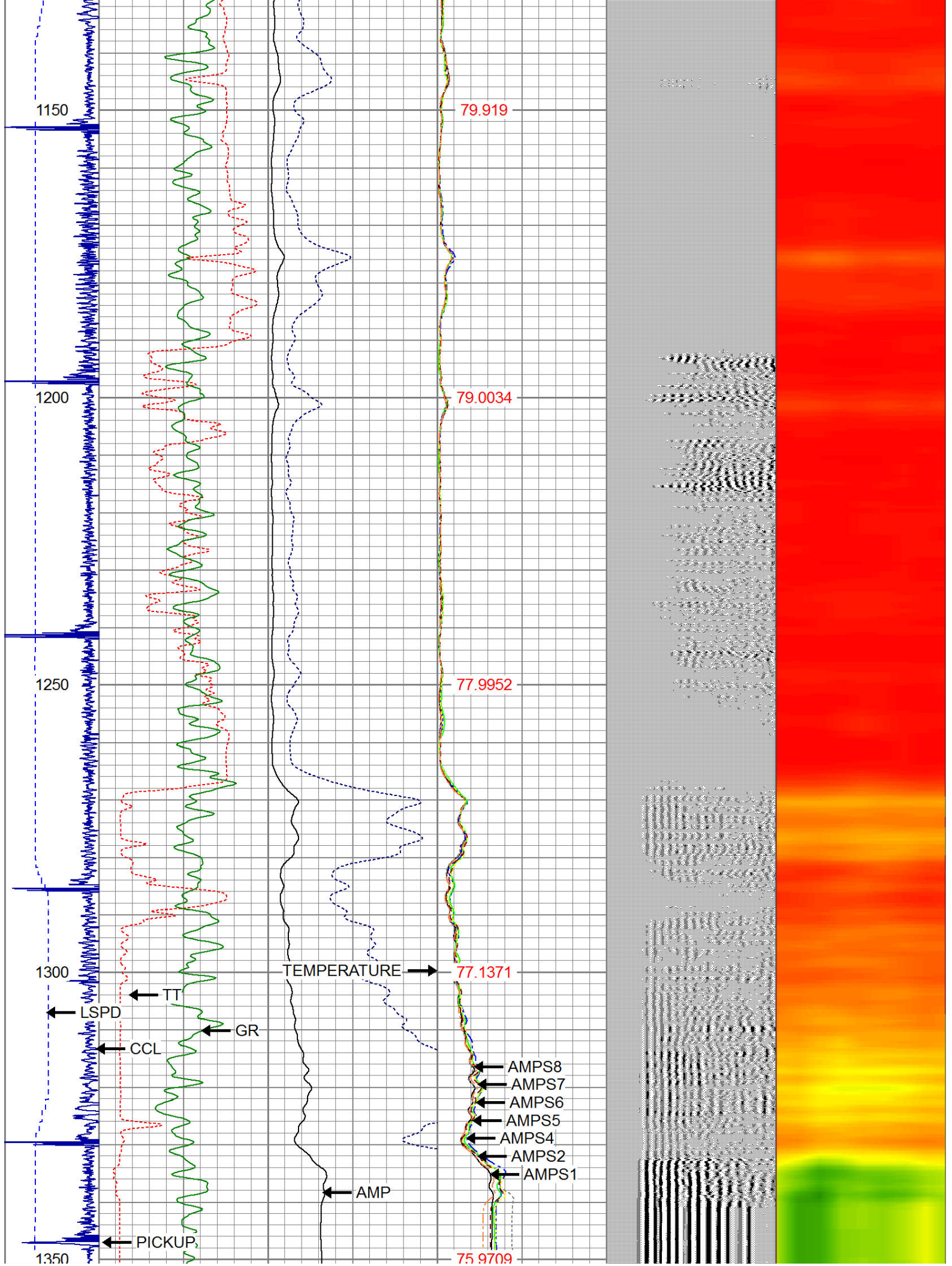


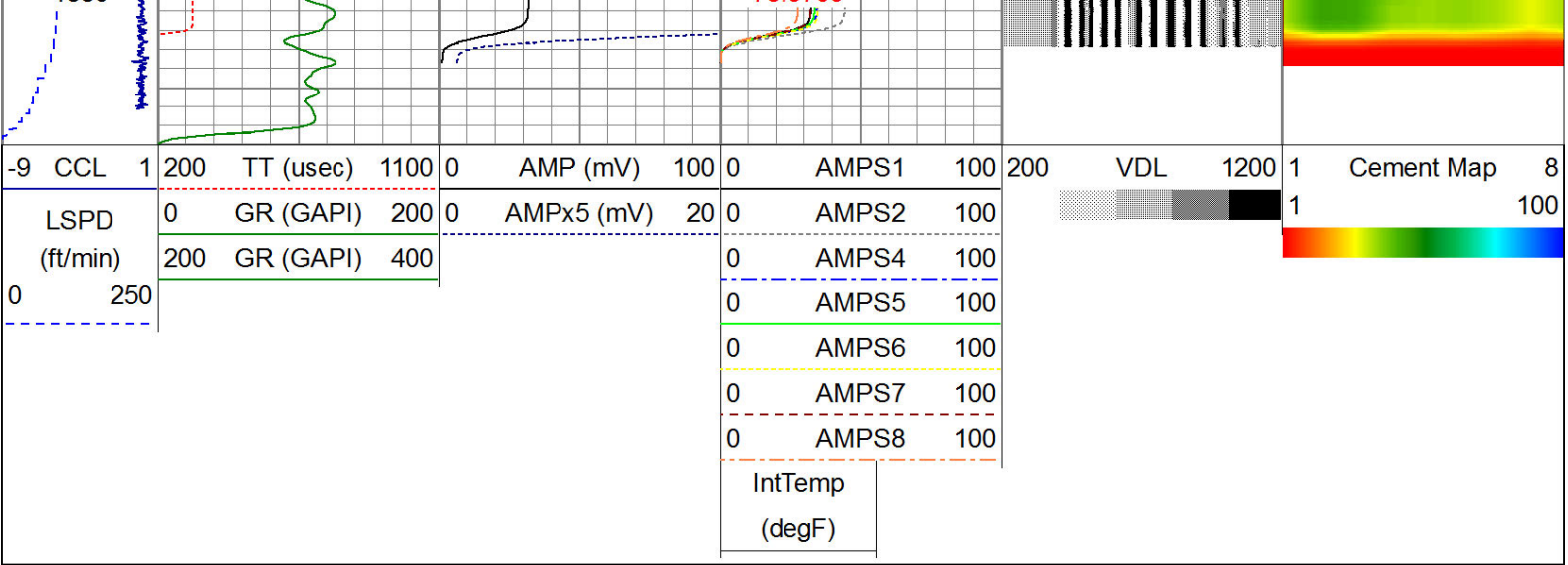












WARRIOR
ENERGY SERVICES

Company

KERR McGEE OIL AND GAS

Well

STATE 3-16

Field

WATTENBERG

County

WELD

State

CO