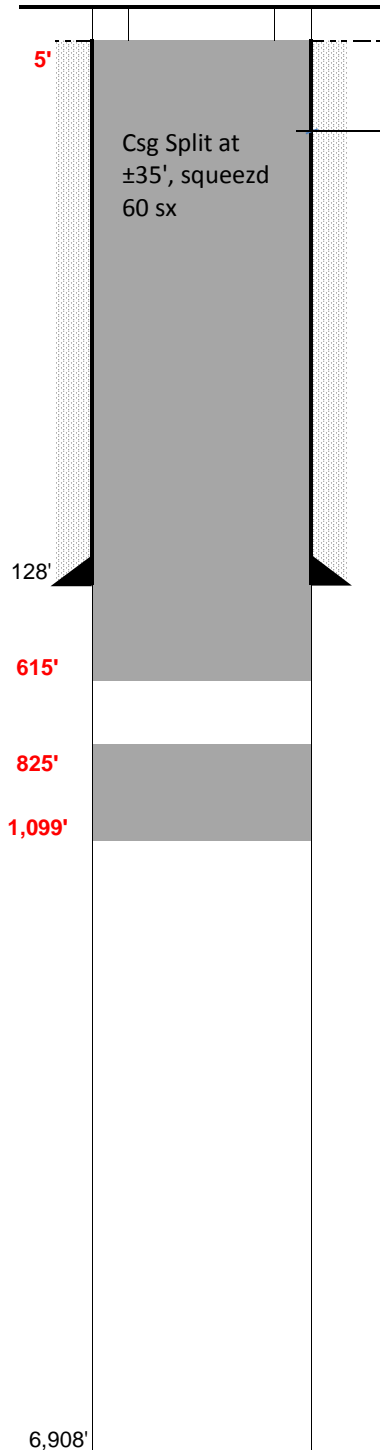


PROPOSED WBD

<b>WELL NAME:</b>	<u>Duell #3</u>	<b>COUNTY:</b>	<u>Weld</u>	<b>SPUD:</b>	<u>3/27/57</u>
<b>OPERATOR:</b>	<u>Carrizo Oil &amp; Gas</u>	<b>STATE:</b>	<u>Colorado</u>	<b>P&amp;A:</b>	<u>5/16/14</u>
<b>COMP ZONE:</b>	<u>Dry Hole</u>	<b>API :</b>	<u>05-123-05505</u>	<b>GL:</b>	<u>4,902'</u>
<b>LOCATION:</b>	<u>8N 60W S25 NE SW</u>				



**SURFACE CASING**

DEPTH: 128' SIZE: 8.625" GRADE: H-40 WT (#/ft): 28.0  
 CEMENT: 125 sx of Class G + 3% CaCl2  
 COMMENTS: \_\_\_\_\_

**PRODUCTION CASING**

DEPTH: \_\_\_\_\_ SIZE: \_\_\_\_\_ GRADE: \_\_\_\_\_ WT (#/ft): \_\_\_\_\_  
 CEMENT: \_\_\_\_\_ TOC: \_\_\_\_\_  
 COMMENTS: \_\_\_\_\_

PERFS: \_\_\_\_\_ - \_\_\_\_\_ PROD ZONE 1: \_\_\_\_\_  
 PERFS: \_\_\_\_\_ - \_\_\_\_\_ ZONE 2: \_\_\_\_\_  
 PERFS: \_\_\_\_\_ - \_\_\_\_\_ ZONE 3: \_\_\_\_\_

**PREVIOUS PLUGS**

RECOVERED: \_\_\_\_\_ SIZE: \_\_\_\_\_  
 CMT 1: 100' - 50' COMMENT: 15 sx Cement  
 CMT 2: 40' - 4' COMMENT: 10 sx Cement  
 CMT 3: \_\_\_\_\_ - \_\_\_\_\_ COMMENT: \_\_\_\_\_

**AS PLUGGED** Plug #1: 1,099' to 825' (100 sx), tagged plug

Plug #2: 615' to Surface (250 sx)

Note: Discovered casing leak at 35', attempted squeeze with 60 sx cement, could not stop leak.

**FORMATIONS:**

NIORARA: 6,070'  
 CODELL \_\_\_\_\_  
 D SAND 6,798'  
 D SILT \_\_\_\_\_  
 J SAND 6,878'