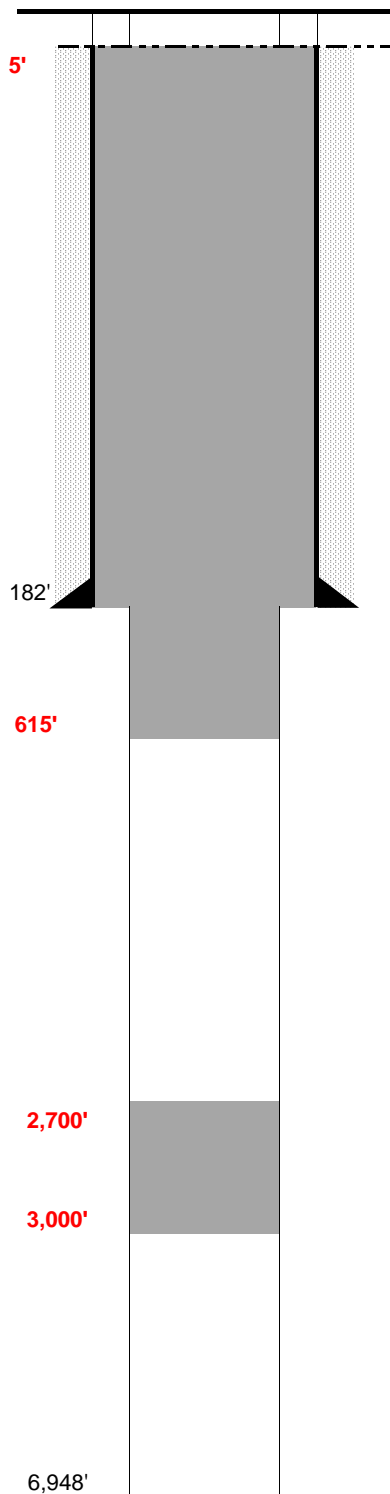


WELL NAME: Duell #25-1
OPERATOR: Carrizo Oil & Gas
COMP ZONE: J Sand
LOCATION: 8N 60W S25 NW SW

COUNTY: Weld
STATE: Colorado
API : 05-123-09617
GL / KB: 4875' / 4887

SPUD: 12/9/78
COMP: 12/20/78
ABDN: 4/12/14
COGCC: DA



SURFACE CASING

DEPTH: 182' SIZE: 8.625" GRADE: _____ WT (#/ft): _____
CEMENT: 150 sx
COMMENTS: _____

PRODUCTION CASING

DEPTH: _____ SIZE: _____ GRADE: _____ WT (#/ft): _____
CEMENT: _____ TOC: _____
COMMENTS: _____

PERFS: _____ - _____ PROD ZONE 1: _____
PERFS: _____ - _____ ZONE 2: _____
PERFS: _____ - _____ ZONE 3: _____

PREVIOUS PLUGS

RECOVERED: _____ SIZE: _____
CMT 1: 137' - 182' COMMENT: 15 sx - base of surf csg.
CMT 2: 0' - 30' COMMENT: 10 sx - top of surf csg.
CMT 3: _____ - _____ COMMENT: _____

AS PLUGGED: *Plug 1: 300' cement plug from 3,000' to 2,700' (100 sx cement)
Plug 2: cement plug from 615' to surface (490 sx cement)

*Note: Hole bridged off while trying to wash deeper to set plug

FORMATIONS:

SUSSEX 3,335'
NIOBRARA: 6,063'
FORT HAYS 6,334'
CARLILE 6,365'
GREENHOR 6,410'
BENTONITE 6,678'
D SAND 6,786'
J SAND 6,867'
