

Company Robert L Bayless Producer LLC.		Company Robert L Bayless Producer.	
Well G Pohlman	Well G Pohlman		
Field N/A	Field N/A		
County Moffatt	County Moffatt		
State Colorado	State Colorado		
Location: NW,NW LOT 3		Other Services N/A	
SEC 15 TWP 4n RGE 91W		Elevation	
Permanent Datum	Ground Level	Elevation	N/A
Log Measured From	Kelly Bushing 3'	K.B. N/A	
Drilling Measured From	Kelly Bushing	D.F. N/A	
		G.L. N/A	

Date	6-12-14
Run Number	One
Depth Driller	n/a
Depth Logger	2136'
Bottom Logged Interval	2132'
Top Log Interval	Surface
Open Hole Size	n/a
Type Fluid	Water
Density / Viscosity	///
Max. Recorded Temp.	n/a
Estimated Cement Top	400'
Time Well Ready	Rig
Time Logger on Bottom	7:10 A.M.
Equipment Number	169
Location	Roosevelt
Recorded By	JEFFS
Witnessed By	John Thomas

Borehole Record		Tubing Record	
Run Number	Bit From To	Size	Weight From To
Casing Record	Size	Vgt/Ft	Top Bottom
Surface String	n/a	N/A	0' n/a
Prot. String			
Production String	7"	26#	0' n/a
Liner	5.5"	15.5#	0' 2150'

<<<< Fold Here >>>>

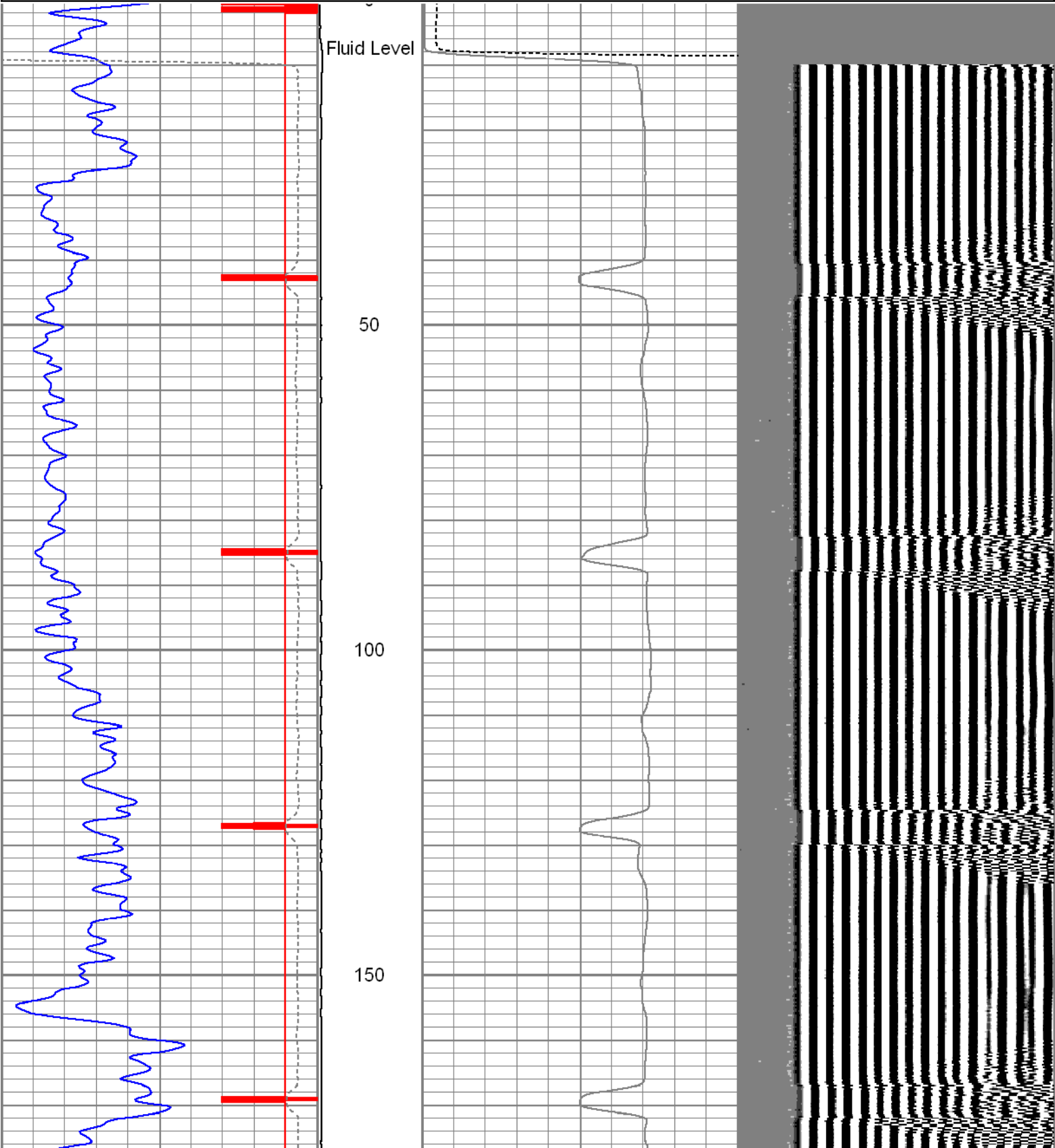
All interpretations are opinions based on inferences from electrical or other measurements and we cannot and do not guarantee the accuracy or correctness of any interpretation, and we shall not, except in the case of gross or willful negligence on our part, be liable or responsible for any loss, costs, damages, or expenses incurred or sustained by anyone resulting from any interpretation made by any of our officers, agents or employees. These interpretations are also subject to our general terms and conditions set out in our current Price Schedule.

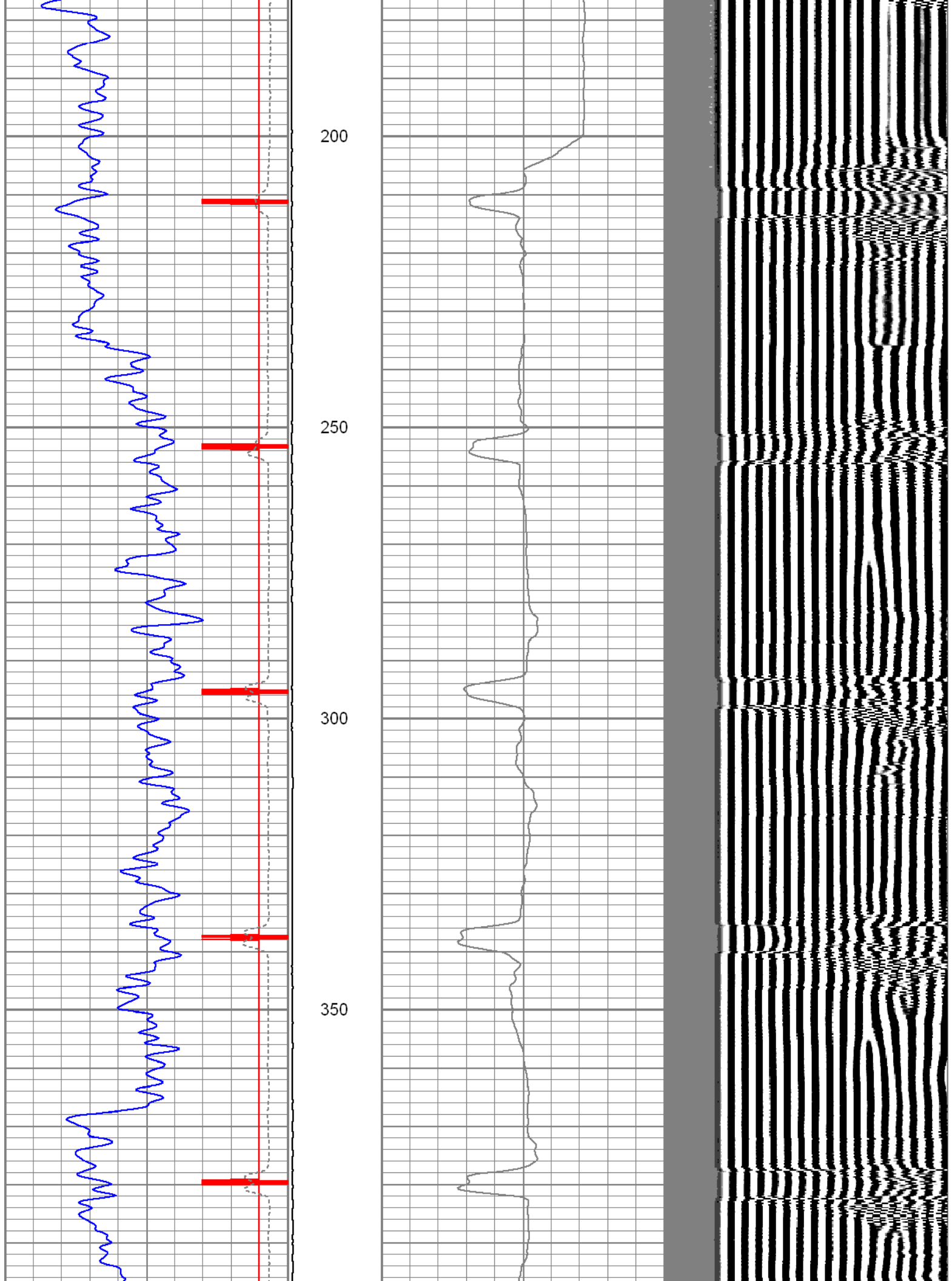
**Comments**

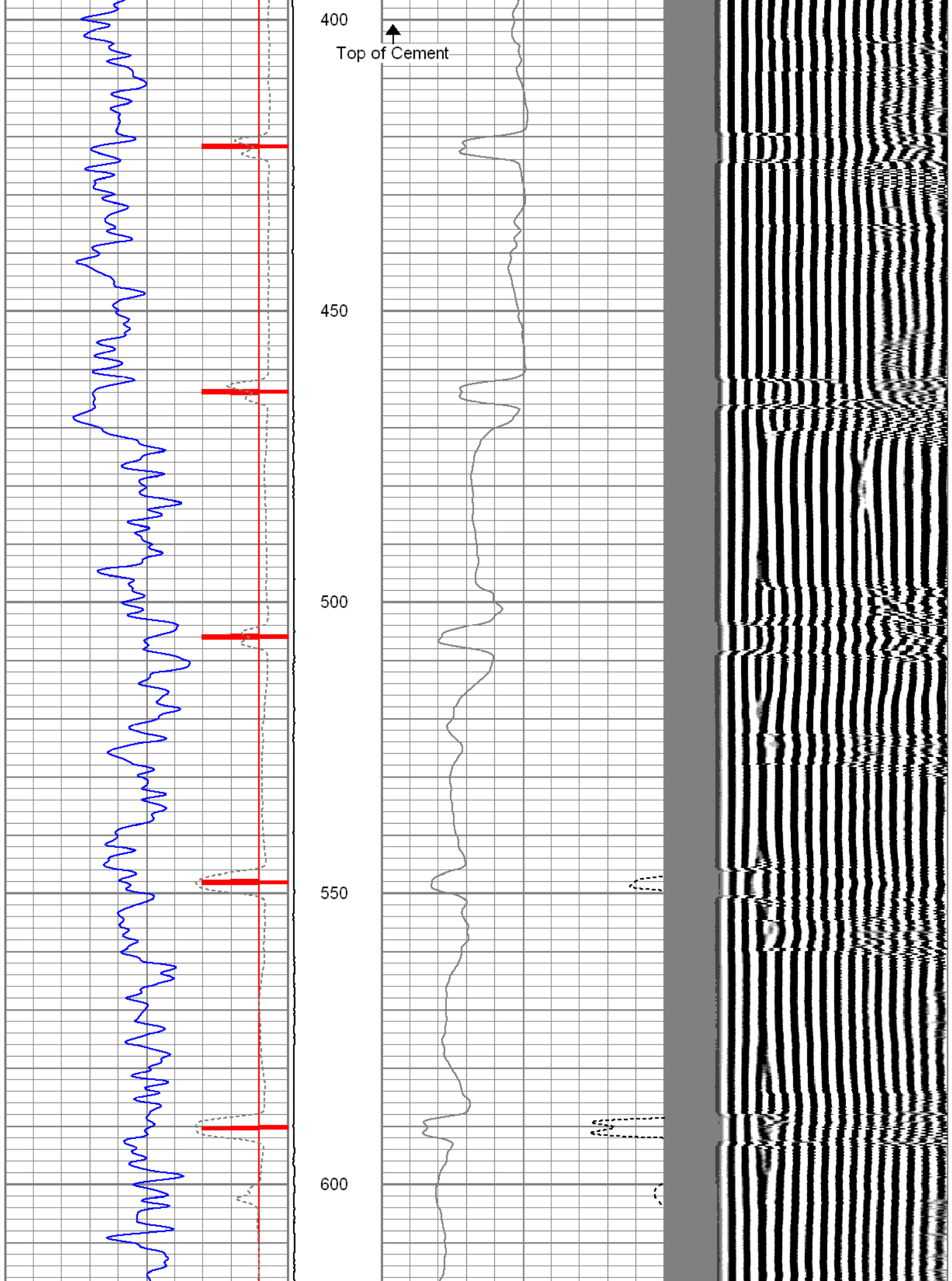
Thank You for using The Perforators

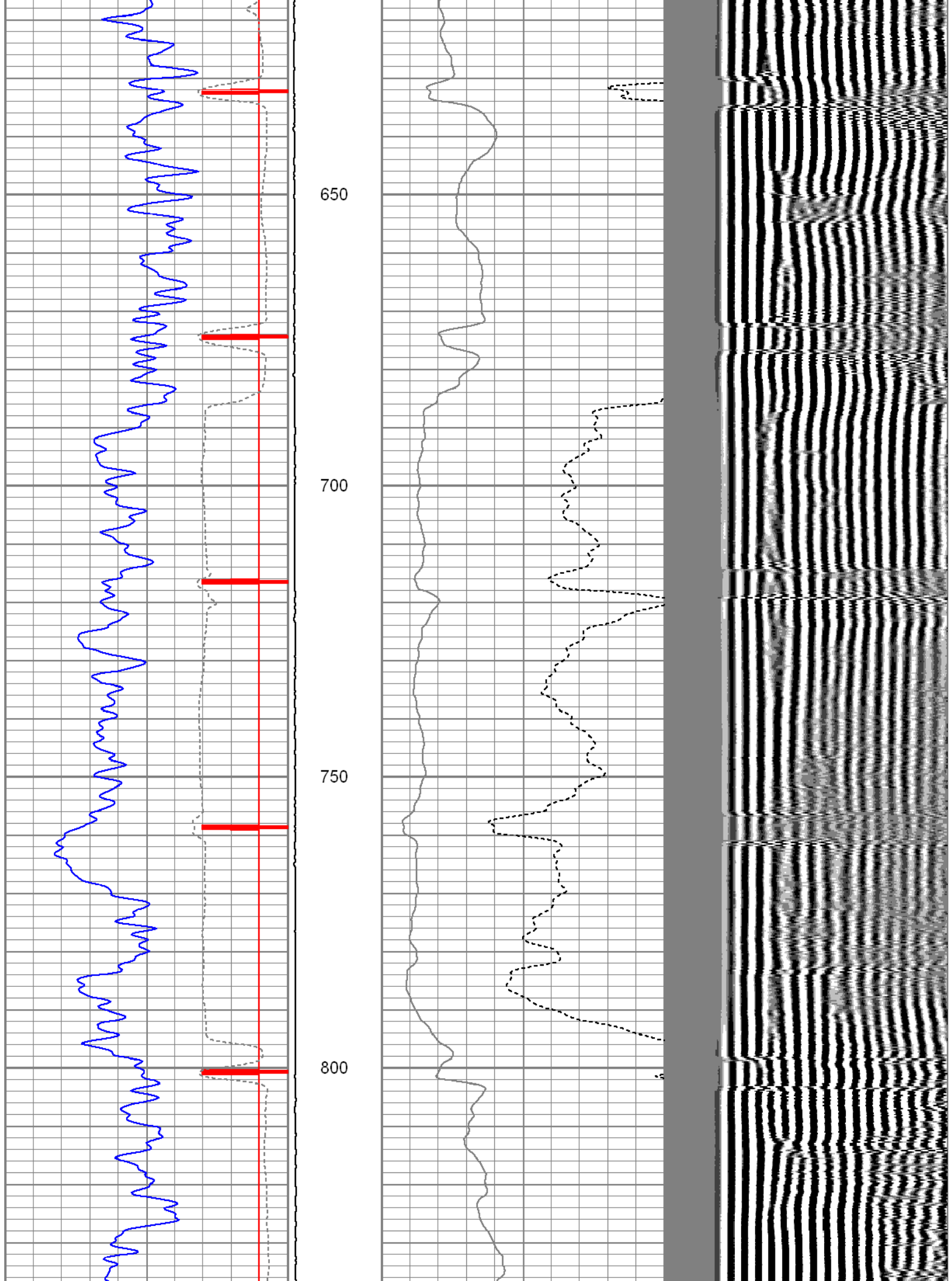
Database File: g pohlman.db  
Dataset Pathname: pass1.3  
Presentation Format: cbl  
Dataset Creation: Thu Jun 12 07:27:46 2014 by Calc Std Casedhole 07122  
Charted by: Depth in Feet scaled 1:240

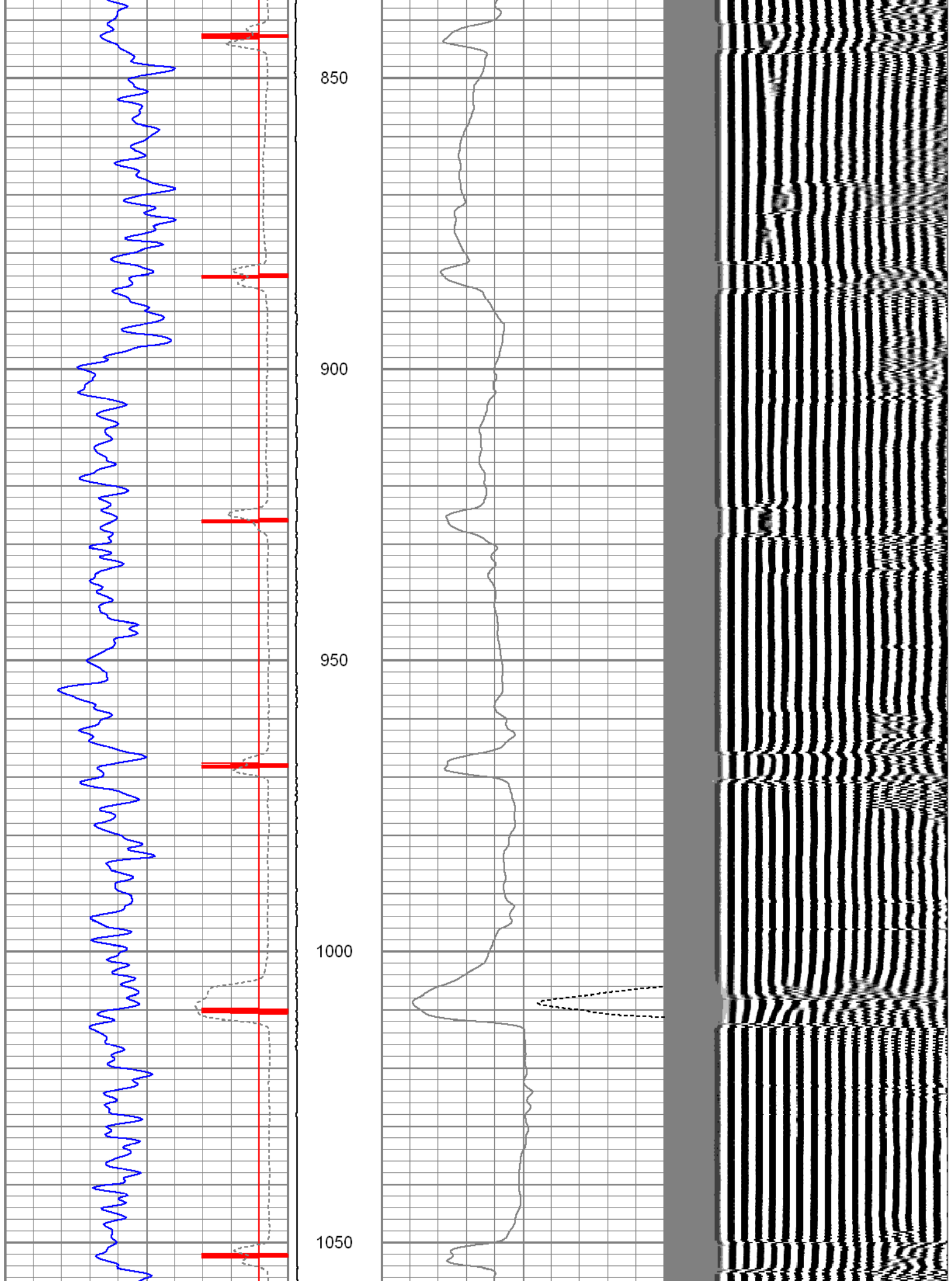
9	Collar Locator	-1	LTEN	0	AMP3FT (mV)	100	200	variable density	1200
0	GR (GAPI)	150	(lb)	0	Amplified Amplitude (mV)	20			
450	TT3FT (usec)	250	0	1500					

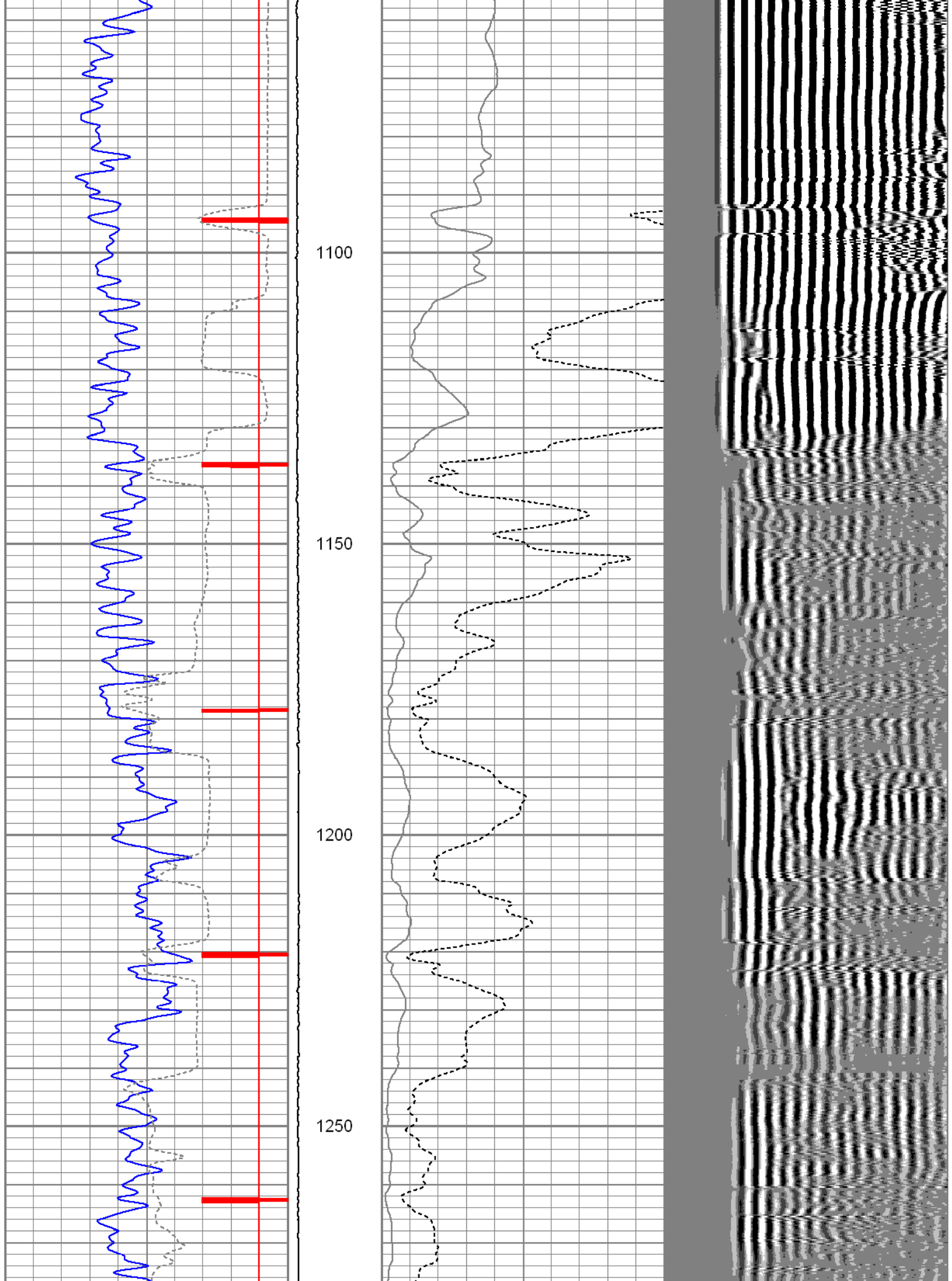


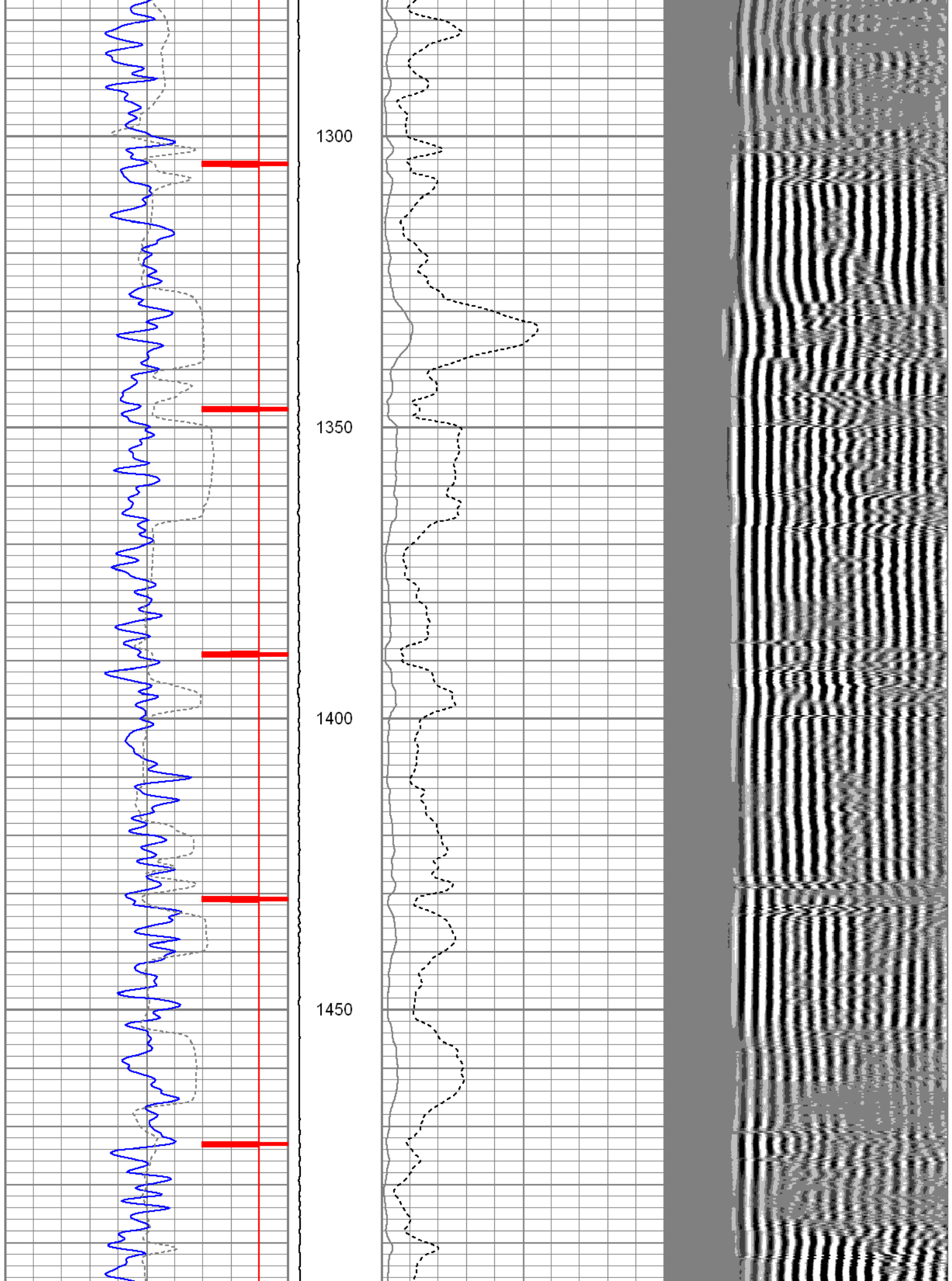


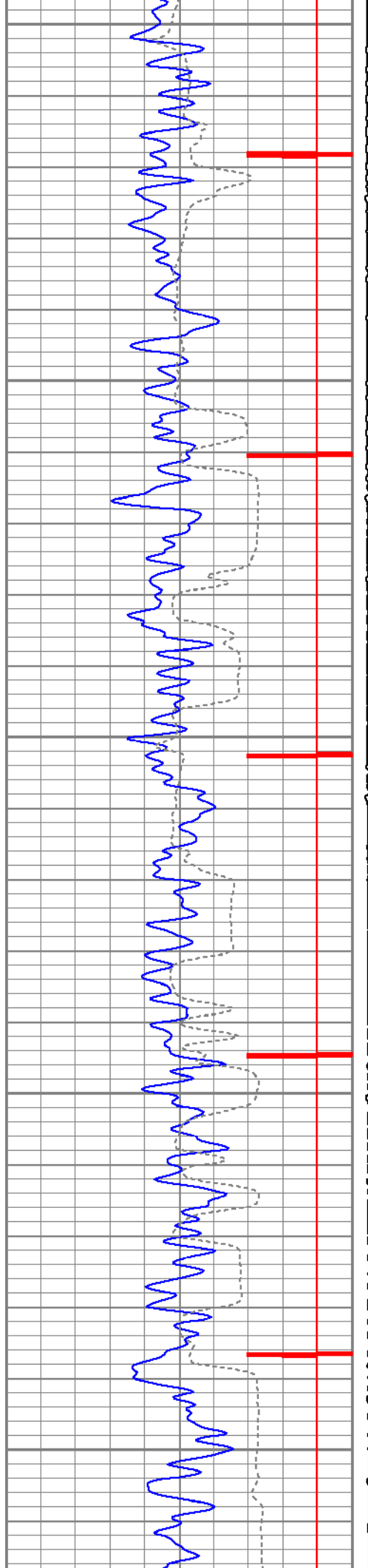












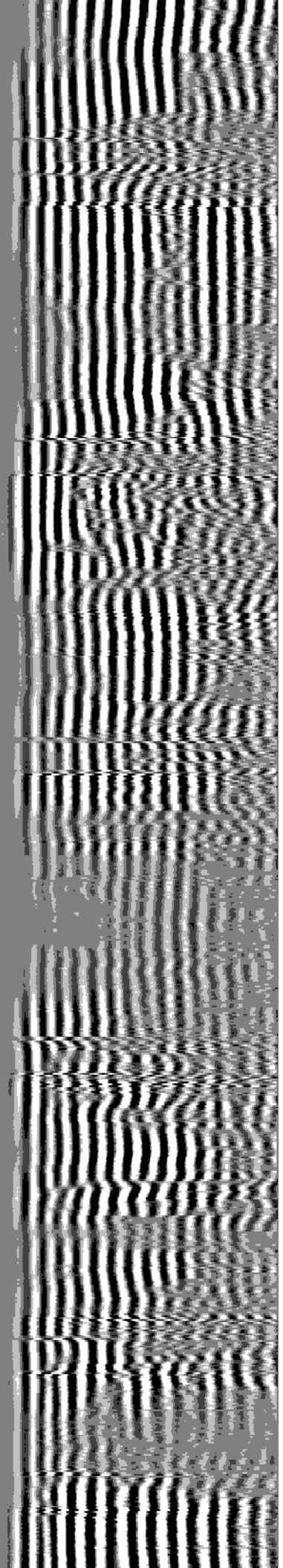
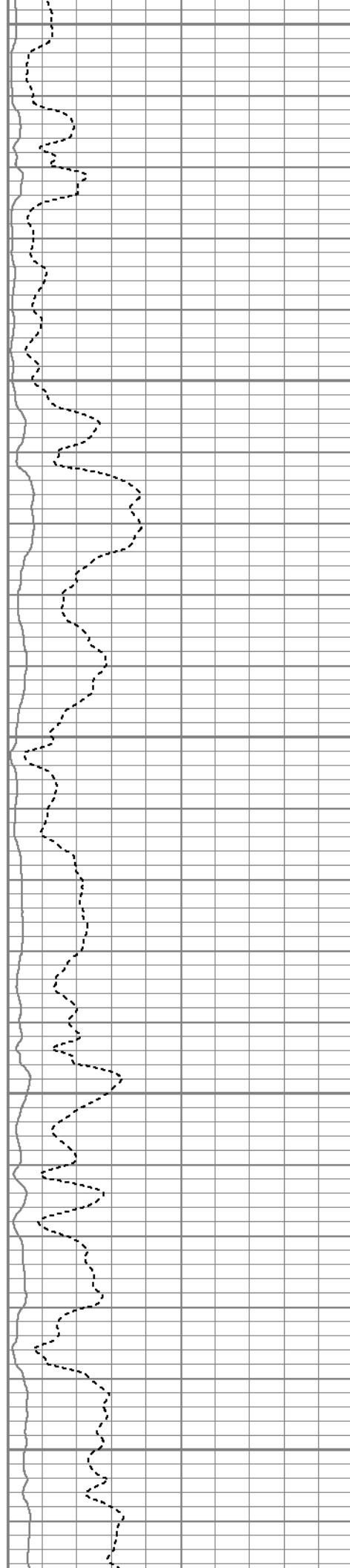
1500

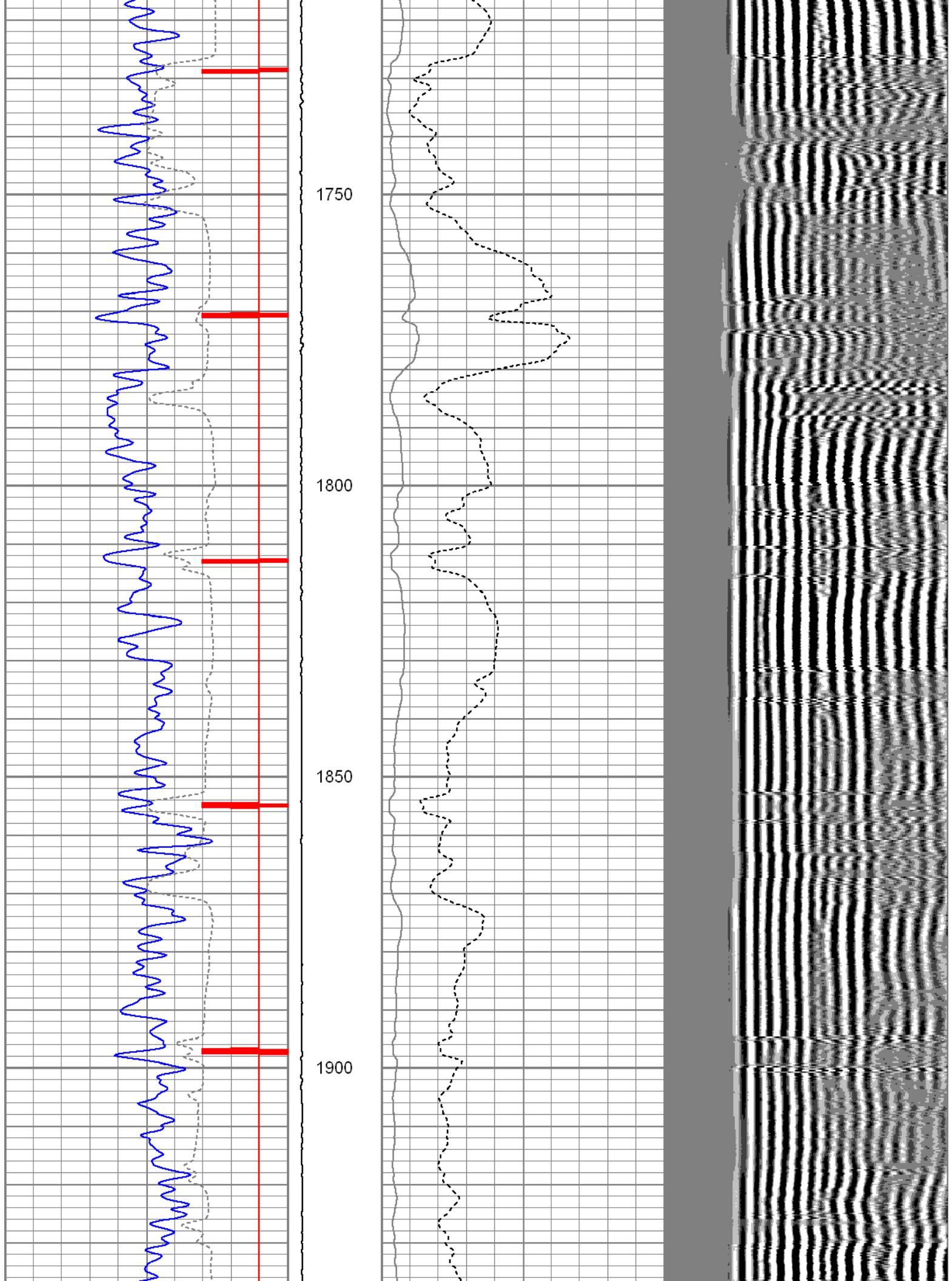
1550

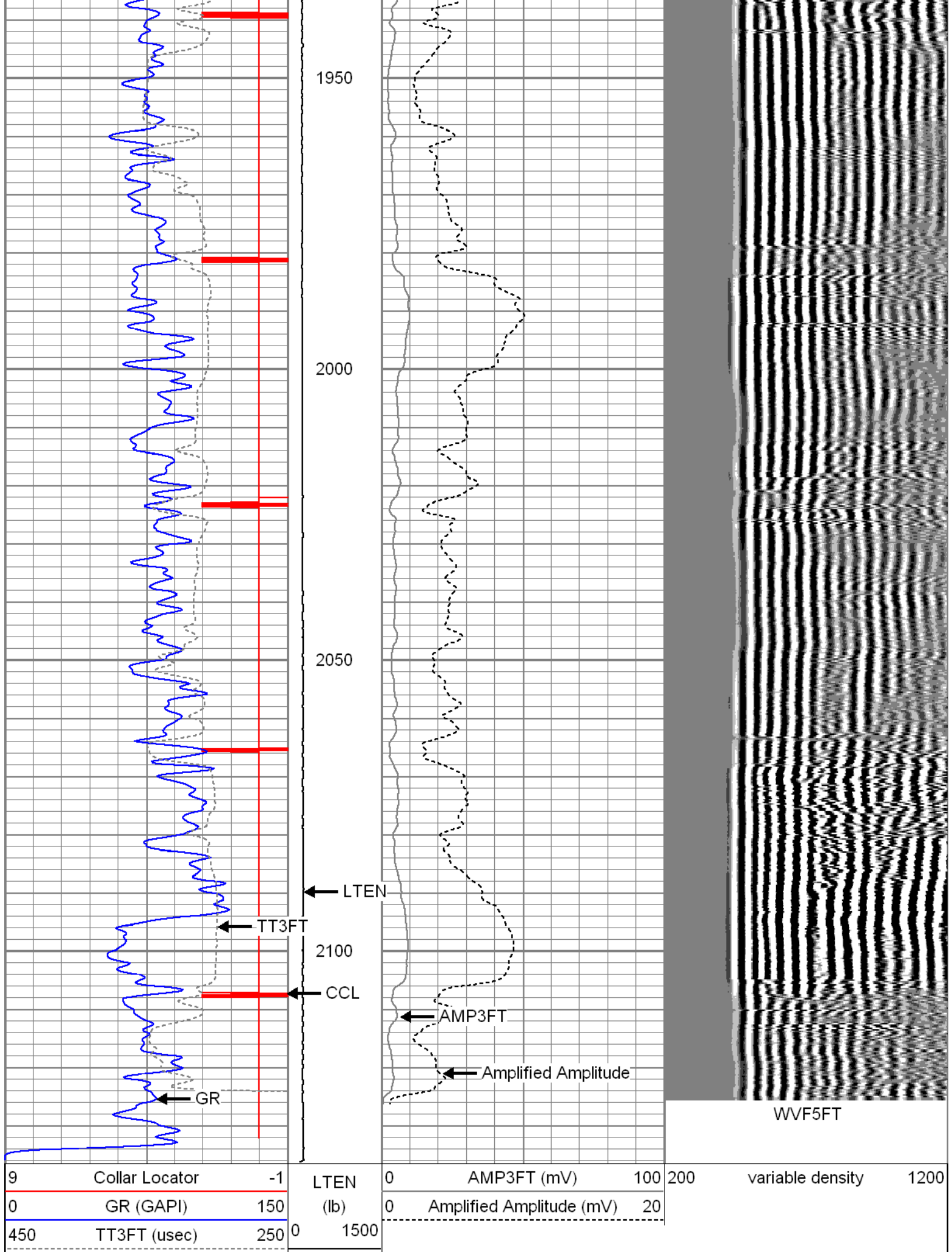
1600

1650

1700







# Calibration Report

Database File: g pohlman.db  
 Dataset Pathname: pass1.3  
 Dataset Creation: Thu Jun 12 07:27:46 2014 by Calc Std Casedhole 07122

## Gamma Ray Calibration Report

Serial Number: 970903  
 Tool Model: P  
 Performed: Fri Apr 04 07:08:08 2014

Calibrator Value: 1.0 GAPI

Background Reading: 0.0 cps  
 Calibrator Reading: 1.0 cps

Sensitivity: 0.8500 GAPI/cps

## Segmented Cement Bond Log Calibration Report

Serial Number: 041102  
 Tool Model: P  
 Performed: Thu May 01 07:03:43 2014

Depth: 87.527 ft  
 Casing Diameter: 5.500 in

	References (mv)		Readings (v)		Results	
	Zero	Reference	Zero	Reference	m	b
3'	1.000	71.921	0.013	2.300	31.005	0.611
5'	1.000	71.921	0.013	2.150	33.179	0.585

Sensor	Offset (ft)	Schematic	Description	Len (ft)	OD (in)	Wt (lb)
WVF3FT WVF5FT	11.96		TitanBig Big Titan 3 Bowspring Centralizer	3.00	2.75	25.00
	10.96		CBL-P (041102) Probe 3' X 5' Analog CBL	8.75	2.75	45.00
CCL GR	4.17		TitanSmall Small Titan 3 Bowspring Centralizer	2.75	1.69	5.00
	2.50		CCL-Probe (970903) Probe Analog GR/CCL	1.46	2.75	17.00
			GR-P (970903) Probe Analog GR/CCL	3.50	2.75	34.00

Dataset: g pohlman.db: field/well/run1/pass1.3  
 Total Length: 19.46 ft  
 Total Weight: 126.00 lb  
 O.D.: 2.75 in