



Pioneer Energy Services

## GAMMA RAY CCL CEMENT BOND VDL

Company AUGUSTUS ENERGY RESOURCES, LLC  
Well HAYS 32-03 2S44W  
Field VERNON  
County YUMA State COLORADO

Location: API # : 0512512084  
2300' FNL & 2297' FEL  
SWNE

Other Services

SEC 3 TWP 2S RGE 44W

Elevation

Permanent Datum GL  
Log Measured From KB  
Drilling Measured From KB

Elevation  
K.B. 3852  
D.F. 3851  
G.L. 3846

Date 28-JUL-2014

Run Number	ONE
Depth Driller	2357'
Depth Logger	2306'
Bottom Logged Interval	2306'
Top Log Interval	SURFACE
Open Hole Size	6.25"
Type Fluid	WATER
Density / Viscosity	8.33 PPG
Max. Recorded Temp.	128°F
Estimated Cement Top	270'
Time Well Ready	PM
Time Logger on Bottom	17:10
Equipment Number	75
Location	FORT MORGAN
Recorded By	LEROY HOBBS
Witnessed By	GREG JONES

Borehole Record				Tubing Record			
Run Number	Bit	From	To	Size	Weight	From	To

Casing Record	Size	Wgt/Ft	Top	Bottom
Surface String				
Prot. String				
Production String	4-1/2"	11.6#	SURFACE	2357'
Liner				

<<< Fold Here >>>

All interpretations are opinions based on inferences from electrical or other measurements and we cannot and do not guarantee the accuracy or correctness of any interpretation, and we shall not, except in the case of gross or willful negligence on our part, be liable or responsible for any loss, costs, damages, or expenses incurred or sustained by anyone resulting from any interpretation made by any of our officers, agents or employees. These interpretations are also subject to our general terms and conditions set out in our current Price Schedule.

### Comments

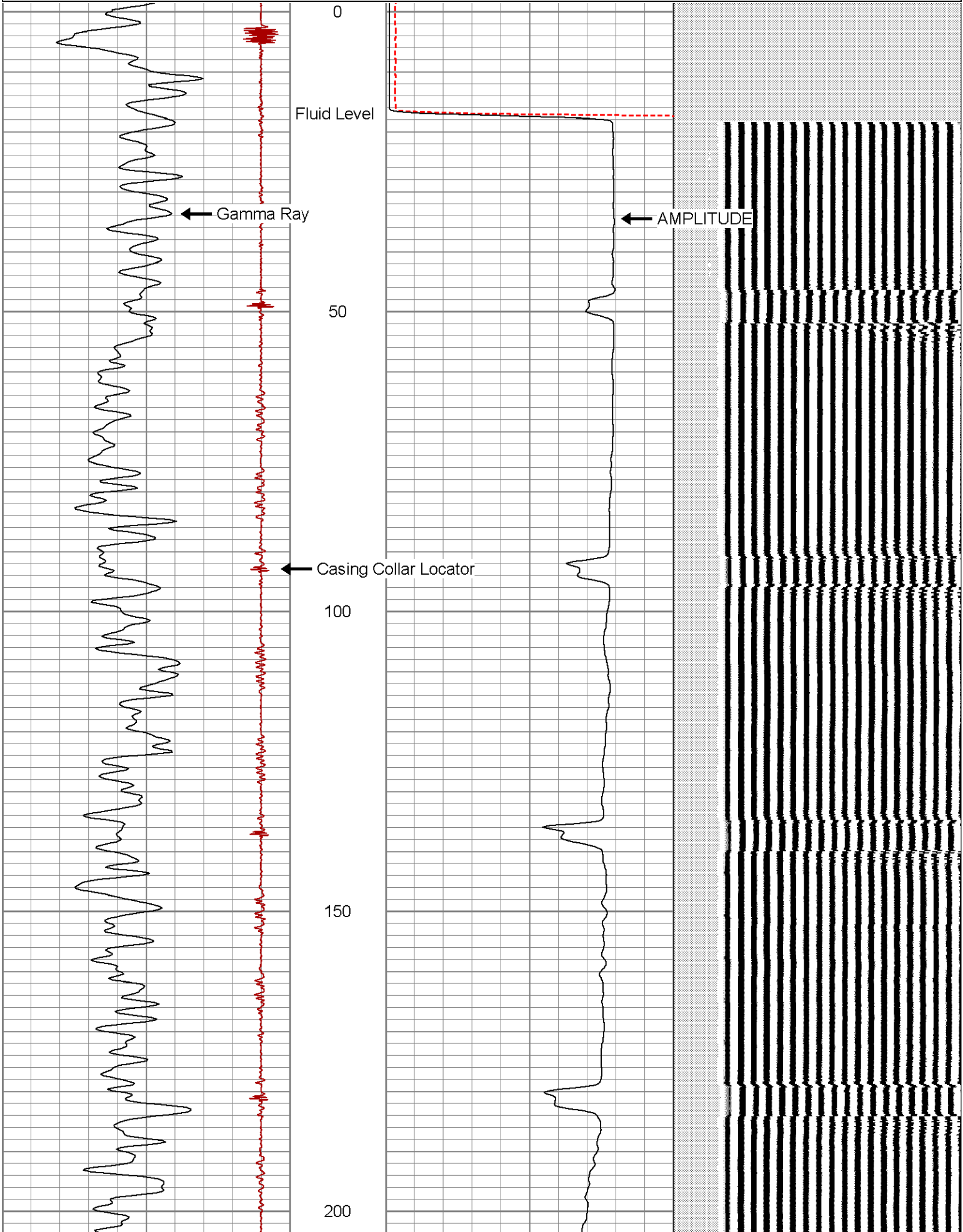
LOG WAS CORRECTED TO PIONEER COMPENSATED NEUTRON LOG  
DATED JULY 23, 2014.

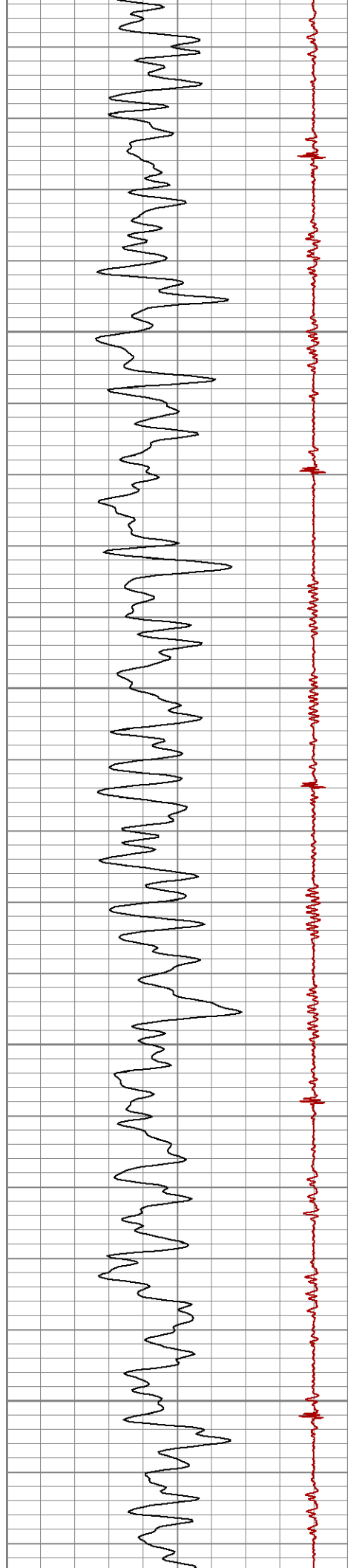
Database File: haya\_32-03\_2s44w.db  
Dataset Pathname: pass1  
Presentation Format: cbl\_drs  
Dataset Creation: Mon Jul 28 17:14:10 2014 by Log 7.0 B1  
Charted by: Depth in Feet scaled 1:240

9	Collar Locator	-1
0	Gamma Ray (GAPI)	200

0	AMP AMPLITUDE (mV)	40	200
0	AMPLITUDE (mV)	100	

VDL 1200



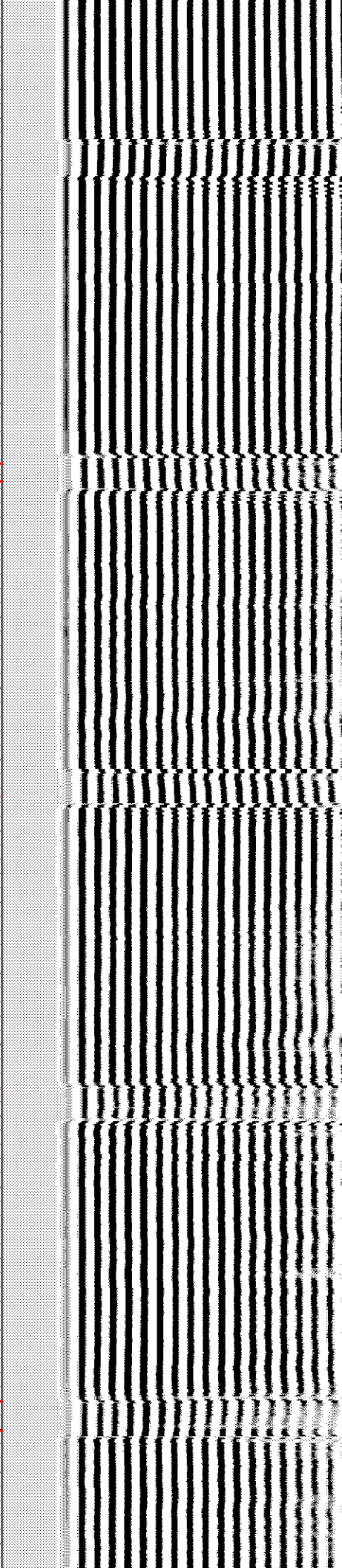
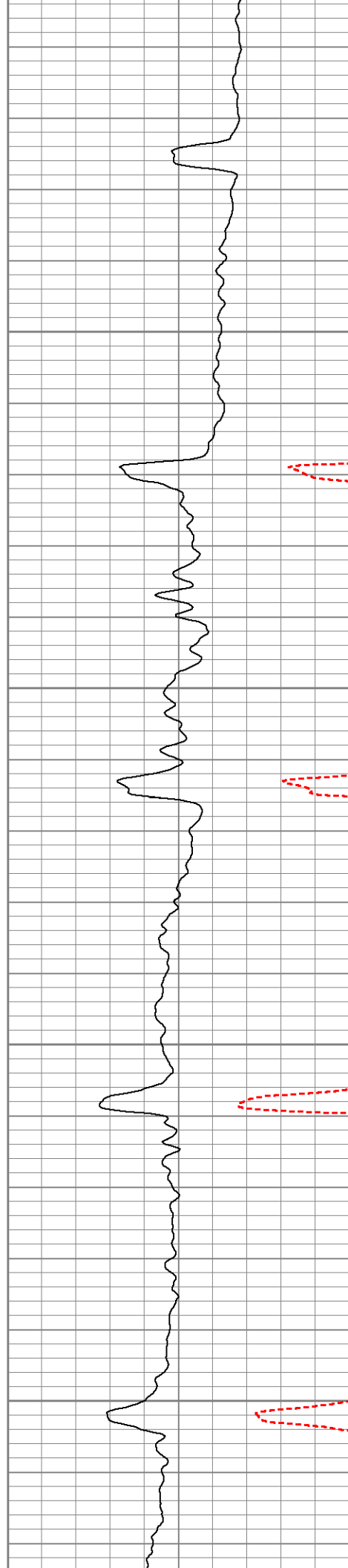


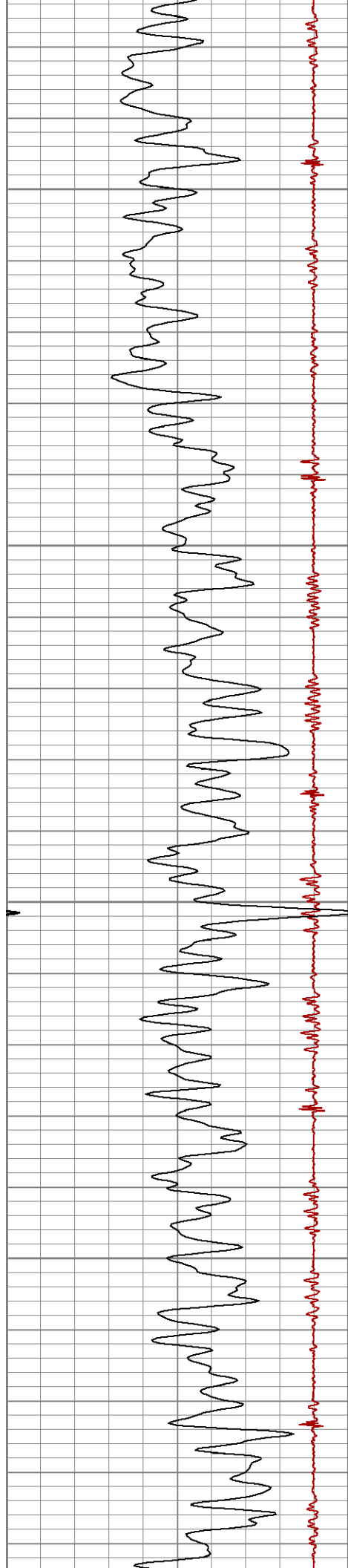
250

300

350

400



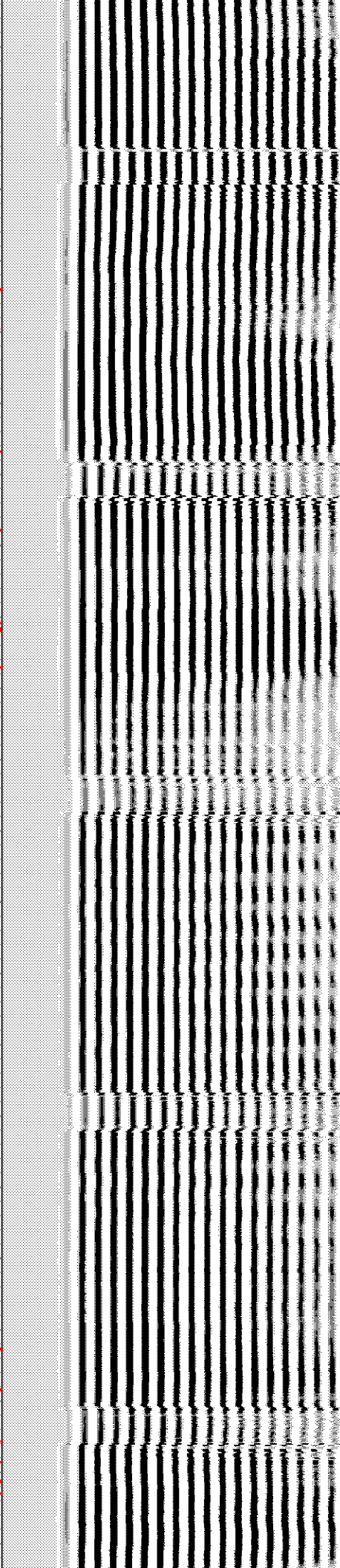
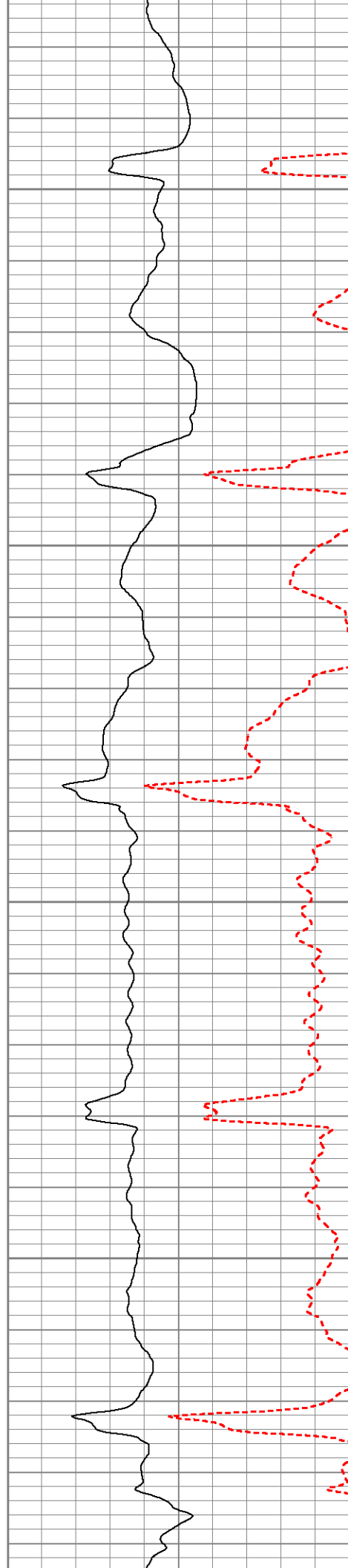


450

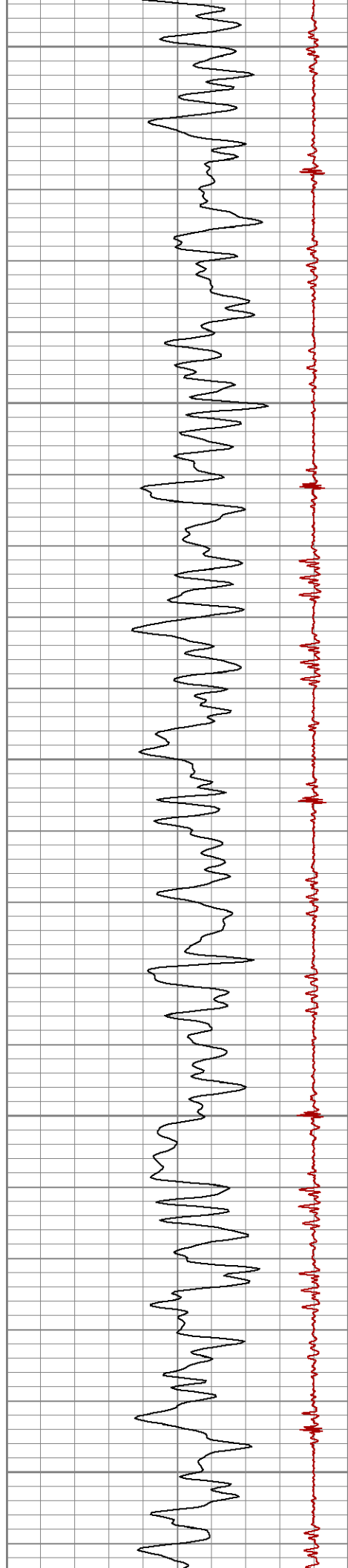
500

550

600







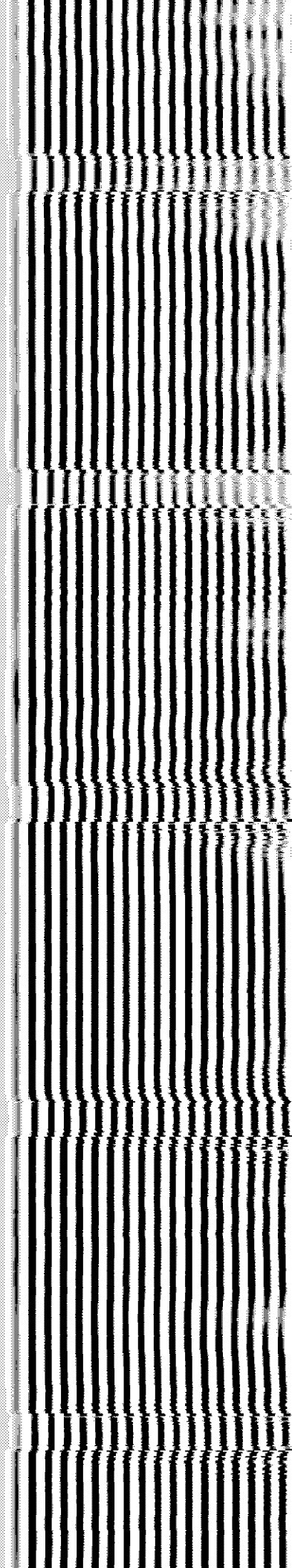
650

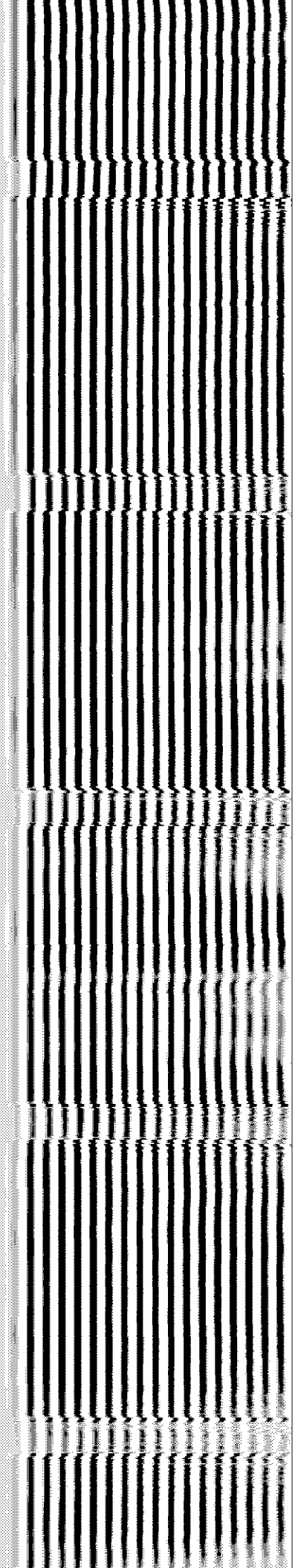
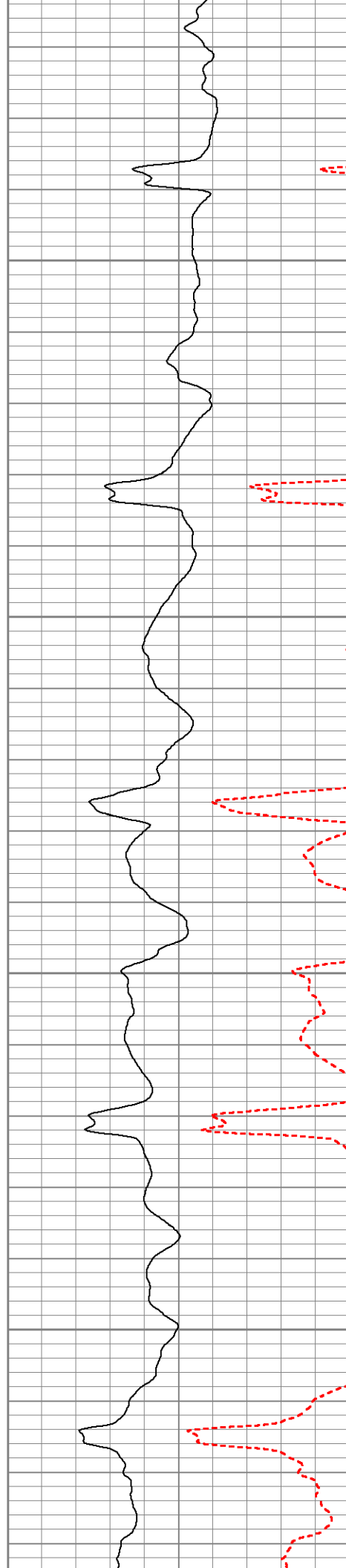
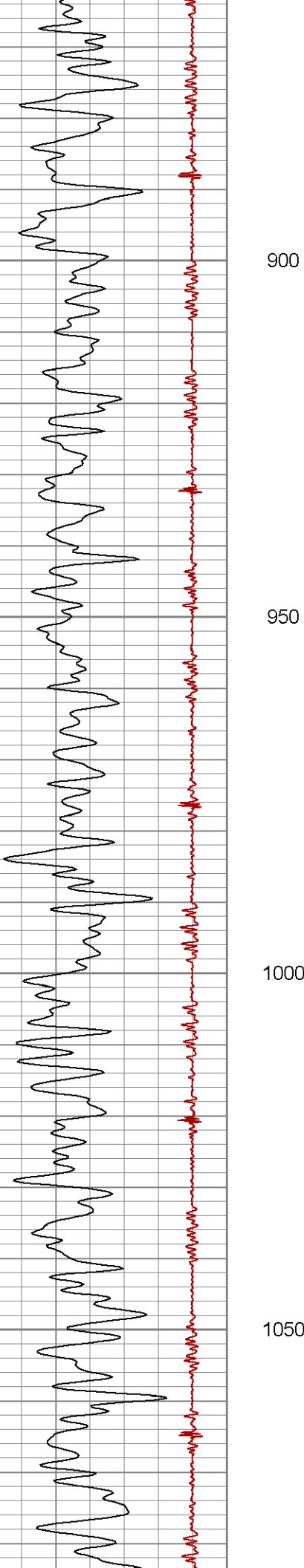
700

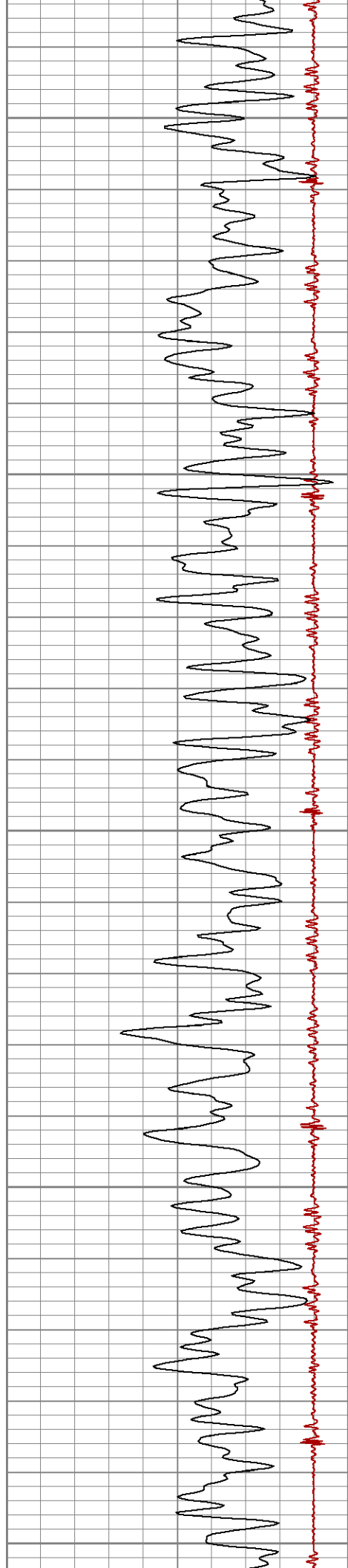
750

800

850







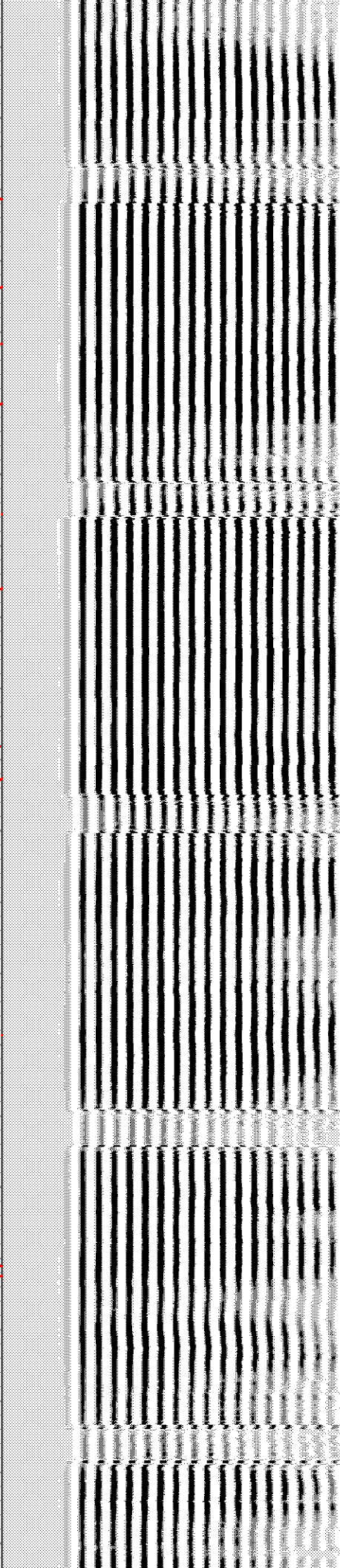
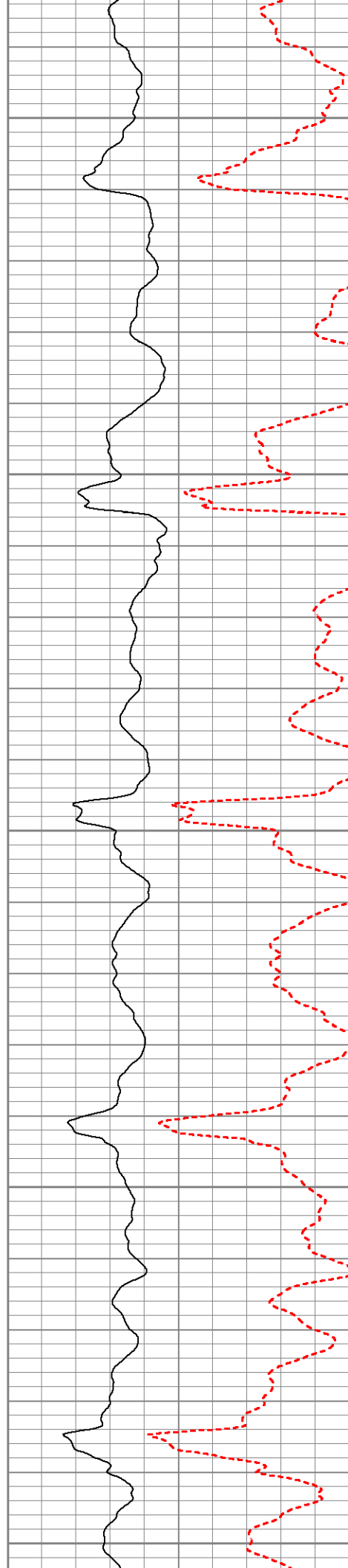
1100

1150

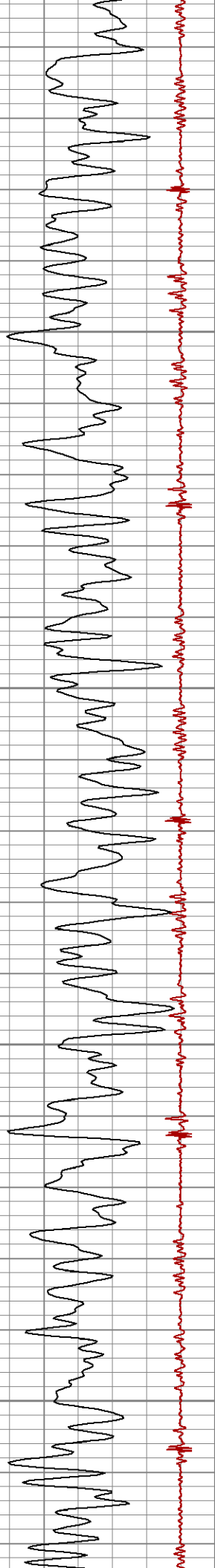
1200

1250

1300





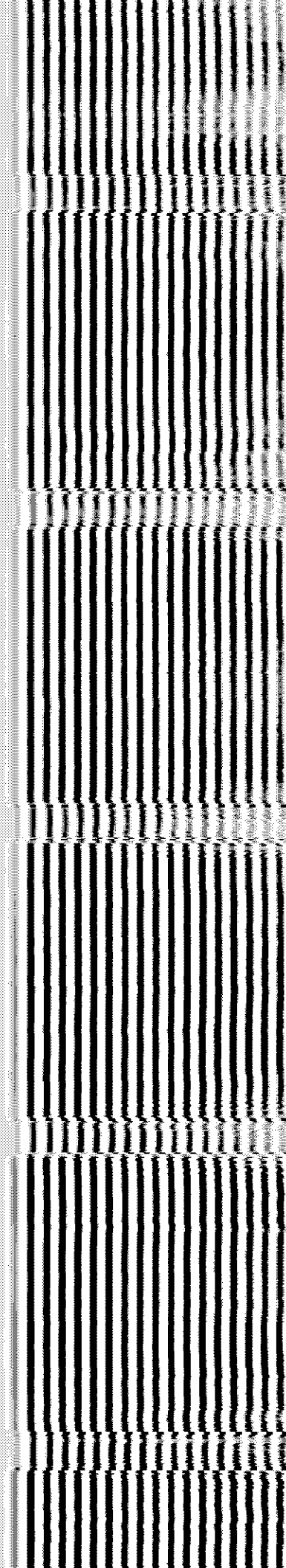
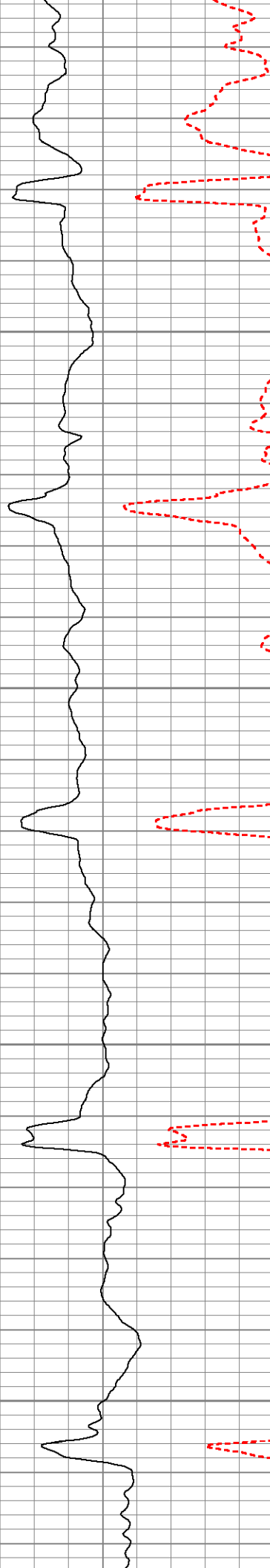


1350

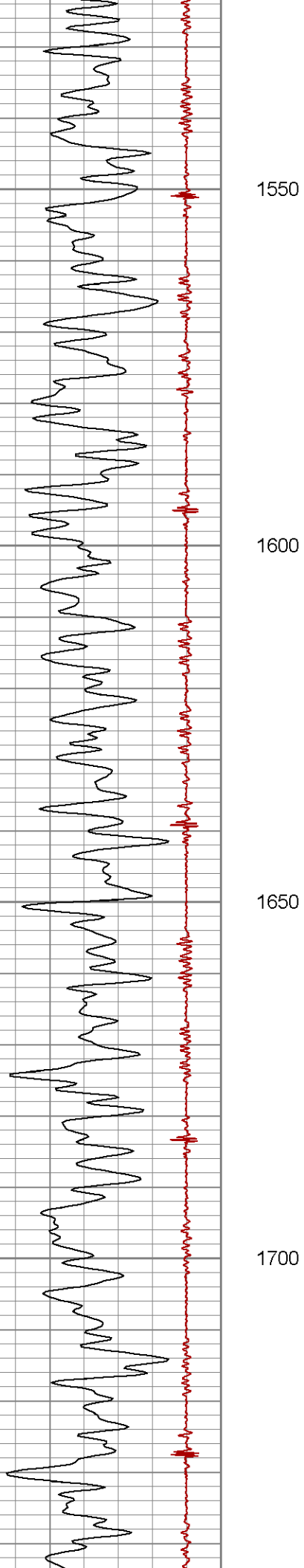
1400

1450

1500





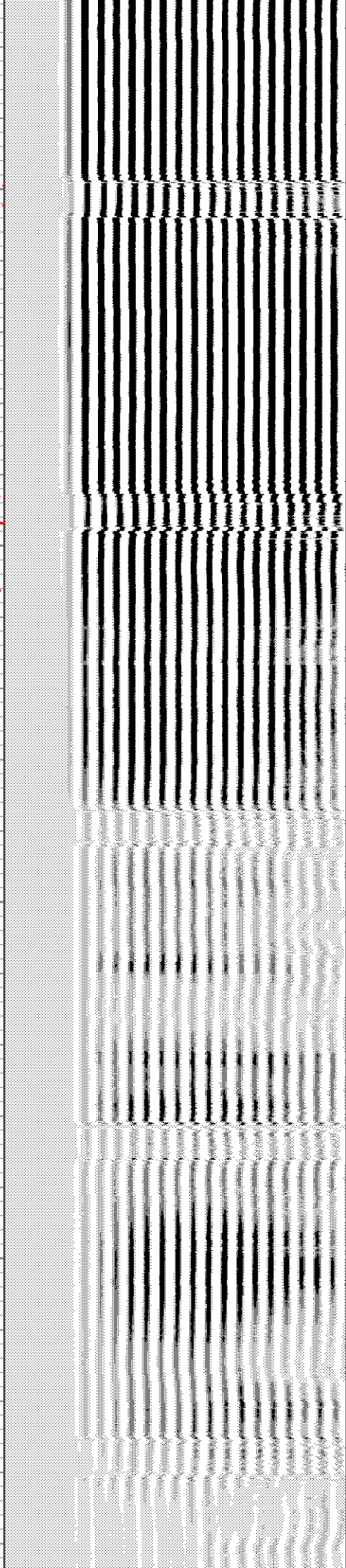
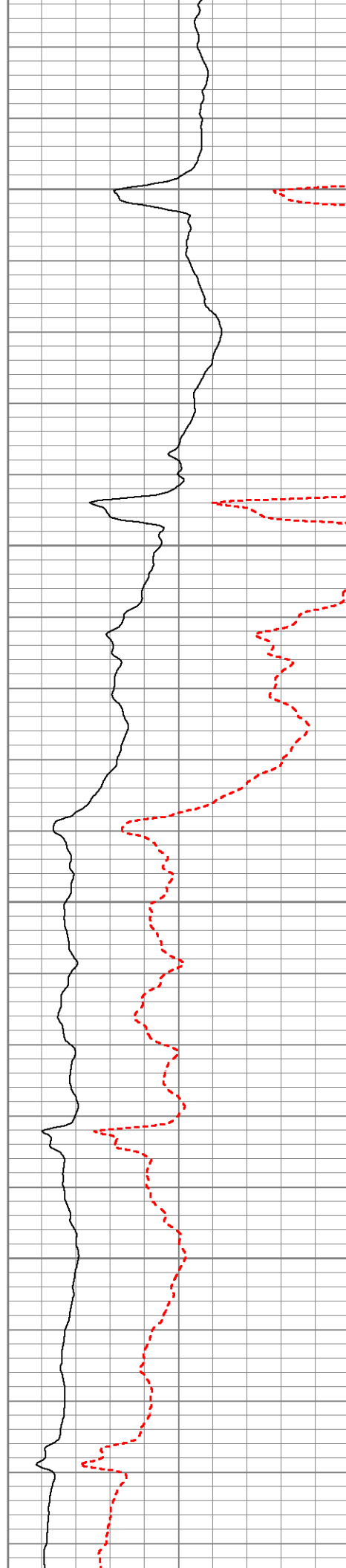


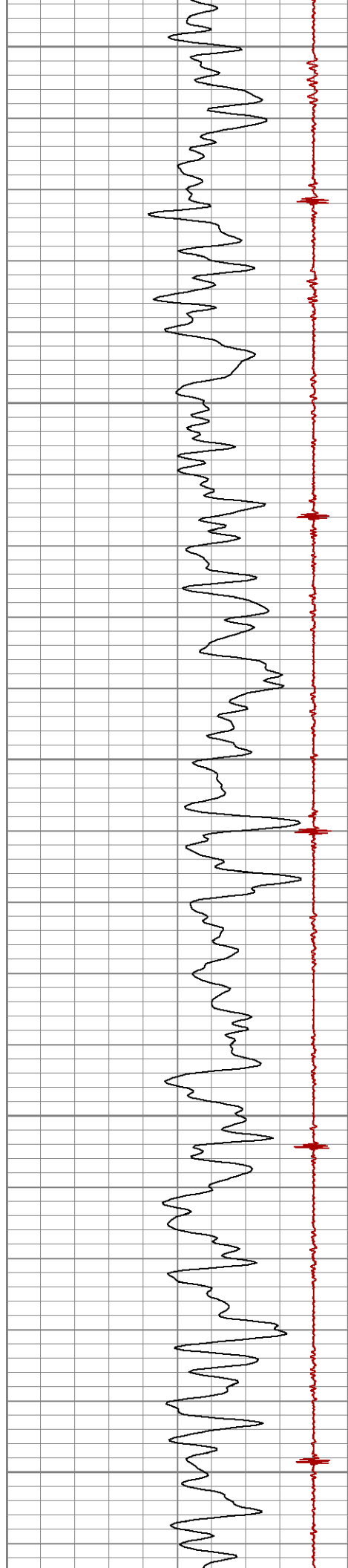
1550

1600

1650

1700





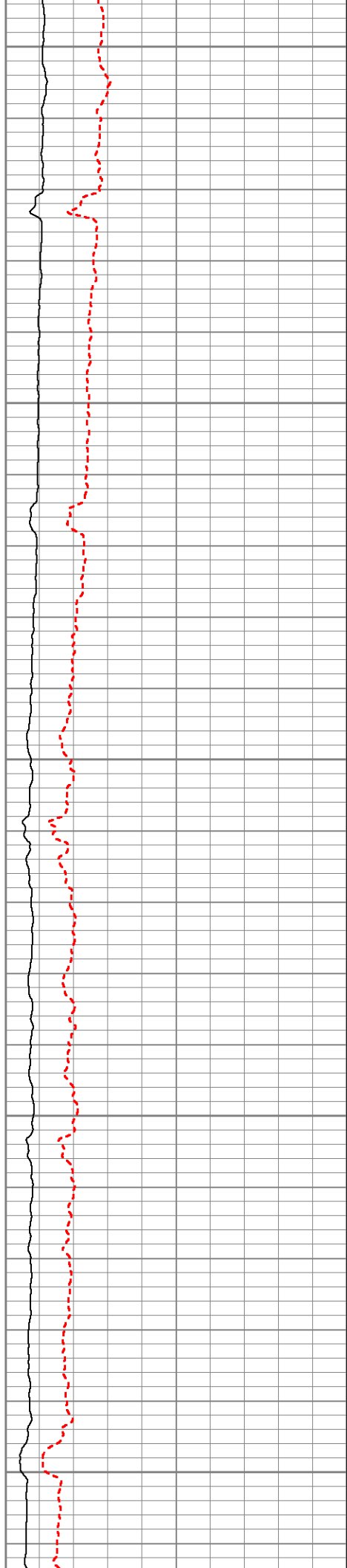
1750

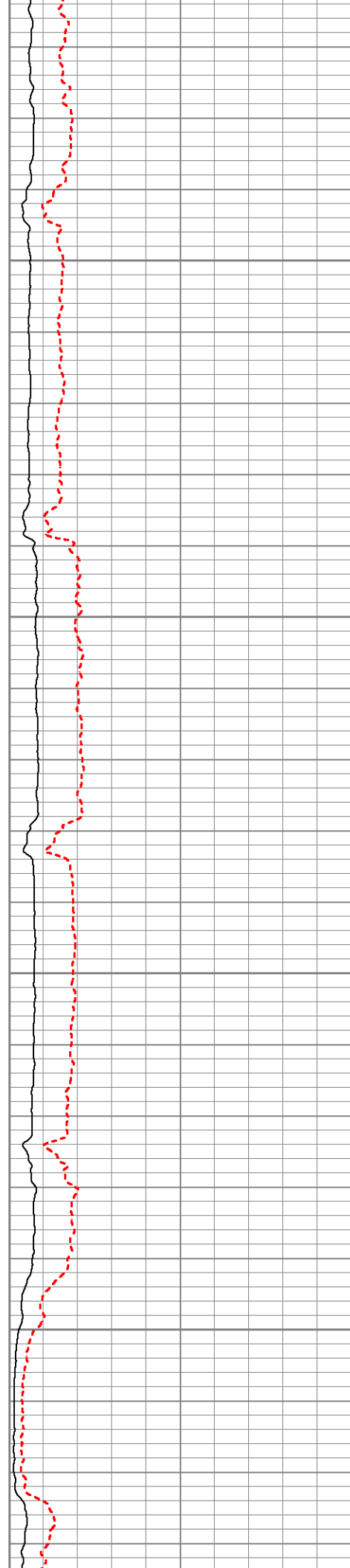
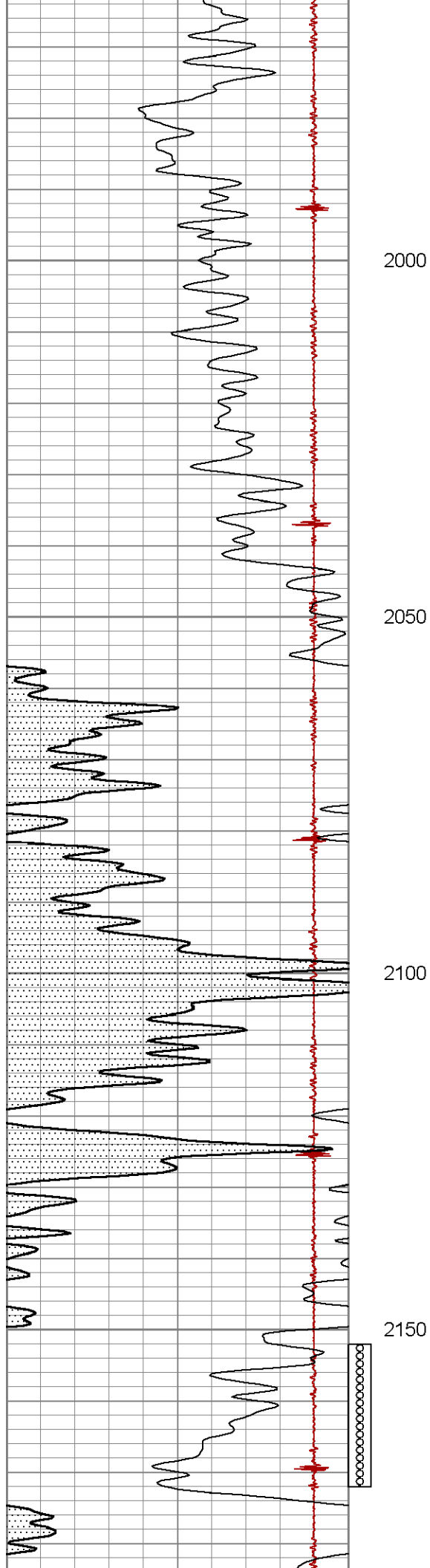
1800

1850

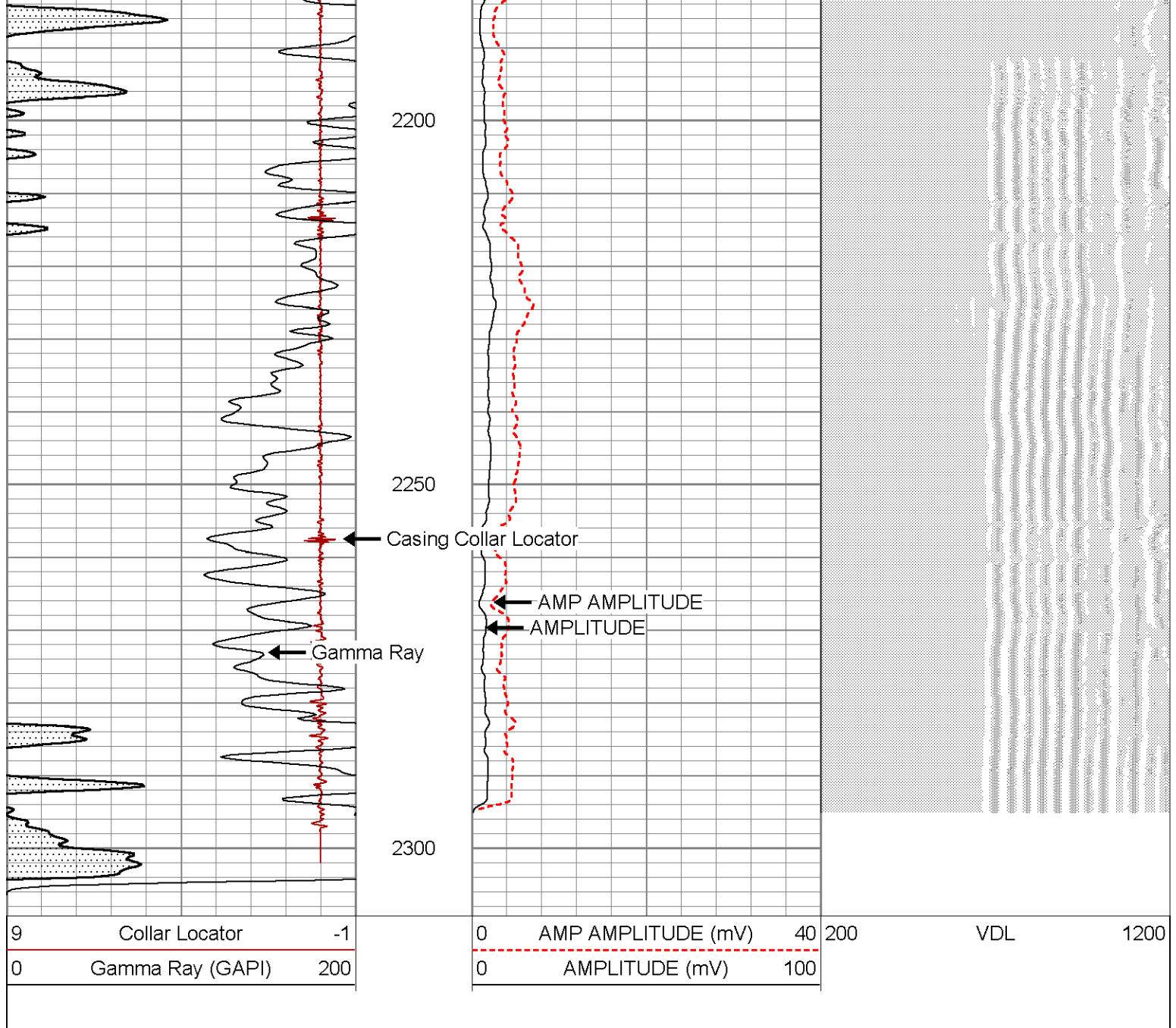
1900

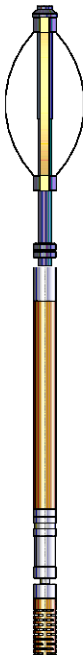
1950

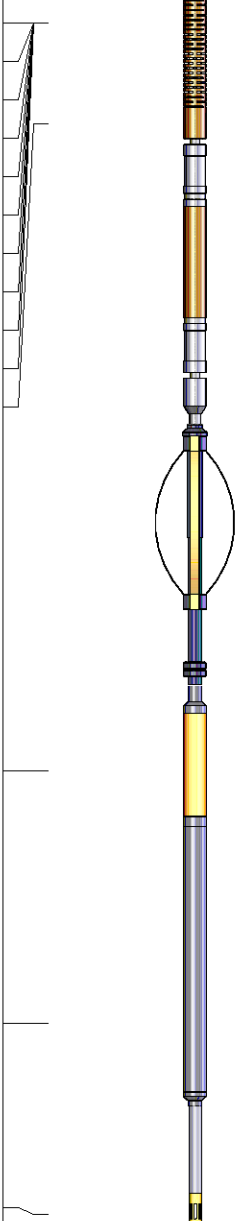








Sensor	Offset (ft)	Schematic	Description	Len (ft)	OD (in)	Wt (lb)
			PTS275	2.83	2.75	

Tool Name	Length (ft)	Weight (lb)	O.D. (in)	Notes	Length (ft)	Weight (lb)	O.D. (in)
WVF3FT	12.96				8.92	2.75	90.00
WVFCAL	12.96						
WVFS1	12.96						
WVFS2	12.96						
WVFS3	12.96						
WVFS4	12.96						
WVFS5	12.96						
WVFS6	12.96						
WVFS7	12.96						
WVFS8	12.96						
WVF5FT	11.88						
CCL	4.88			PTS275	2.83	2.75	
GR	2.15			GR_CCL-Probe (111211) Probe Gamma CCL	4.54	2.75	100.00
TEMP	0.08			TEMP-1.375TEMP (0001) Temperature Tool	1.25	1.38	30.00
Dataset: haya_32-03_2s44w.db: field/well/run1/pass1 Total Length: 20.38 ft Total Weight: 220.00 lb O.D.: 2.75 in							