



FILE NO: US087294	COMPANY WPX ENERGY INC
API NO: 05045222620000	WELL C & C ENERGY GM 423-13
	FIELD GRAND VALLEY
	COUNTY GARFIELD
	STATE CO
Ver. 3.87 S13 T7S R96W PAD: GM 24-12 RIG: HP-318	LOCATION: SHL: 277' FSL 1001' FWL S12 T7S R96W BHL: 2246' FNL 1223' FWL S13 T7S 96W SEC 13 TWP 7S RGE 96W
PERMANENT DATUM LOG MEASURED FROM DRILL. MEAS. FROM	OTHER SERVICES RPM ELEVATIONS: KB 5165 FT DF GL 5141 FT

DATE	29-JUN-2014
RUN	1
TRIP	1
SERVICE ORDER	US087294
DEPTH DRILLER	6796 FT
DEPTH LOGGER	6710 FT
BOTTOM LOGGED INTERVAL	6700 FT
TOP LOGGED INTERVAL	3500 FT
TIME STARTED	10:00
TIME FINISHED	12:30
OPERATOR RIG TIME	2.5 HR
TYPE OF FLUID IN HOLE	WATER
FLUID DENSITY	NA
FLUID SALINITY	NA
FLUID LEVEL	NA
LOGGED CEMENT TOP	NA
WELLHEAD PRESSURE	0 PSI
MAXIMUM HOLE DEVIATION	NA
NOMINAL LOGGING SPEED	10 FMN
MAX. RECORDED TEMP.	187 DEGF
REFERENCE LOG	BAKER HUGHES BOND LOG
REFERENCE LOG DATE	29-JUN-2014
EQUIP. NO.	6670
LOCATION	GRAND JCT
RECORDED BY	D. SMITH
WITNESSED BY	J BRADY

IN MAKING INTERPRETATIONS OF LOGS OUR EMPLOYEES WILL GIVE THE CUSTOMER THE BENEFIT OF THEIR BEST JUDGEMENT. BUT SINCE ALL INTERPRETATIONS ARE OPINIONS BASED ON INFERENCES FROM ELECTRICAL OR OTHER MEASUREMENTS, WE CANNOT, AND WE DO NOT GUARANTEE THE ACCURACY OR CORRECTNESS OF ANY INTERPRETATION. WE SHALL NOT BE LIABLE OR RESPONSIBLE FOR ANY LOSS, COST, DAMAGES, OR EXPENSES WHATSOEVER INCURRED OR SUSTAINED BY THE CUSTOMER RESULTING FROM ANY INTERPRETATION MADE BY ANY OF OUR EMPLOYEES.

BOREHOLE RECORD		
BIT SIZE	FROM	TO
13.5 IN	0 FT	1423 FT
8.75 IN	1423 FT	6812 FT

CASING RECORD				
SIZE	WEIGHT	GRADE	FROM	TO
9.625 IN	32.2 LB/F		0 FT	1423 FT
4.5 IN	11.6 LB/F		0 FT	6812 FT

### REMARKS

RUN 1 TRIP 1: ALL DATA ON THIS LOG IS DEPTH SHIFTED AND DEPTH MATCHED USING GAMMA RAY CURVE T THE BAKER HUGHES BOND LOG DONE 29-JUN-2014 (AT CLIENT'S REQUEST)

THE DEPTH MATCHING PROCESS CREATES POTENTIAL FOR COLLAR LENGTHS TO VARY FROM THOSE RECORDED ON OTHER CASED HOLE WIRELINE UNITS WITHOUT GAMMA RAY REFERENCE

AMOUNT LINEAR SHIFT -2 FT

LOGGED WITH 0 PSI AT WELL HEAD

BHT = 187 DEGF

SJ =

THANK YOU FOR CHOOSING BAKER HUGHES WIRELINE SERVICES

CREW: SMITH/PACK/COATE

#### EQUIPMENT DATA

RUN	TRIP	TOOL	SERIES NO.	SERIAL NO.	POSITION
1	1	CBL	1426XA	10218495	CENTRALIZED
1	1	GR	2459XA	10218504	CENTRALIZED

### MAIN LOG 5"/100FT SCALE

ECLIPS 6.2i ECLIPS General Release Rel 6.2i Wed Jun 12 12:21:40 CDT 2013

Updates: 1

Plotted: Sun Jun 29 18:49:33 2014

#### PARAMETER AND FILTER SUMMARY REPORT

FILE: /dat1a/CH087294/n354h04.prm  
LOGGING MODE: DEPTH DIRECTION: UP  
TOP DEPTH: 3465.625 ft BOTTOM DEPTH: 6715.641 ft

#### SYMMETRIC FILTER

MEASUREMENT TYPE	PARAMETER	VALUE	UNITS	INTERVAL (ft)
GR	FILTER ()	medium (1)		TOP BOTTOM

#### RPM PROCESSING

MEASUREMENT TYPE	PARAMETER	VALUE	UNITS	INTERVAL (ft)
PNC Parameters	BOREHOLE CONTENTS	FLUID		TOP BOTTOM
	OPEN/CASED HOLE	CASED HOLE		" "
	BOREHOLE SIZE	8.75	in	" "
	CASING SIZE	4.50	in	" "
	MATRIX	SANDSTONE		" "
	CORRECTION BUFFER	11		" "

#### CURVE DESCRIPTION REPORT

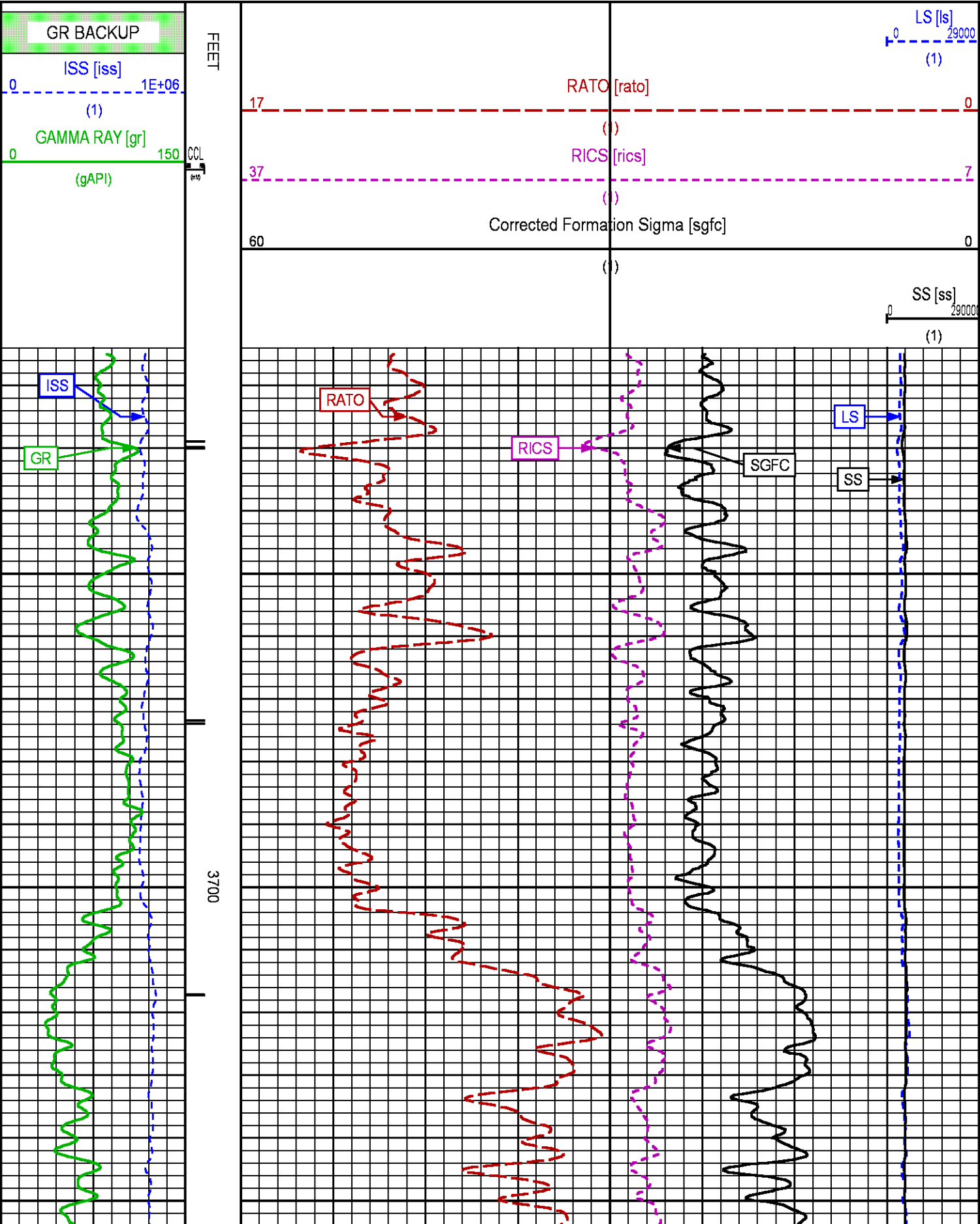
CURVE NAME	CREATION DATE	CURVE DESCRIPTION
F1:CCL	Jun 29 14:03:12 2014	CASING COLLAR LOCATOR
F1:GR	Jun 29 14:03:12 2014	GAMMA RAY
F1:ISS	Jun 29 14:03:12 2014	INELASTIC SHORT SPACE COUNT RATE
F1:LS	Jun 29 14:03:12 2014	LONG SPACE COUNT RATE
F1:RATO	Jun 29 14:03:12 2014	SHORT/LONG SPACE COUNT RATE RATIO
F1:RICS	Jun 29 14:03:12 2014	SHORT SPACE INELASTIC TO CAPTURE COUNT RATE RATIO (ISS/CSS)
F1:SGFC	Jun 29 14:03:12 2014	CORRECTED FORMATION SIGMA
F1:SS	Jun 29 14:03:12 2014	SHORT SPACE COUNT RATE

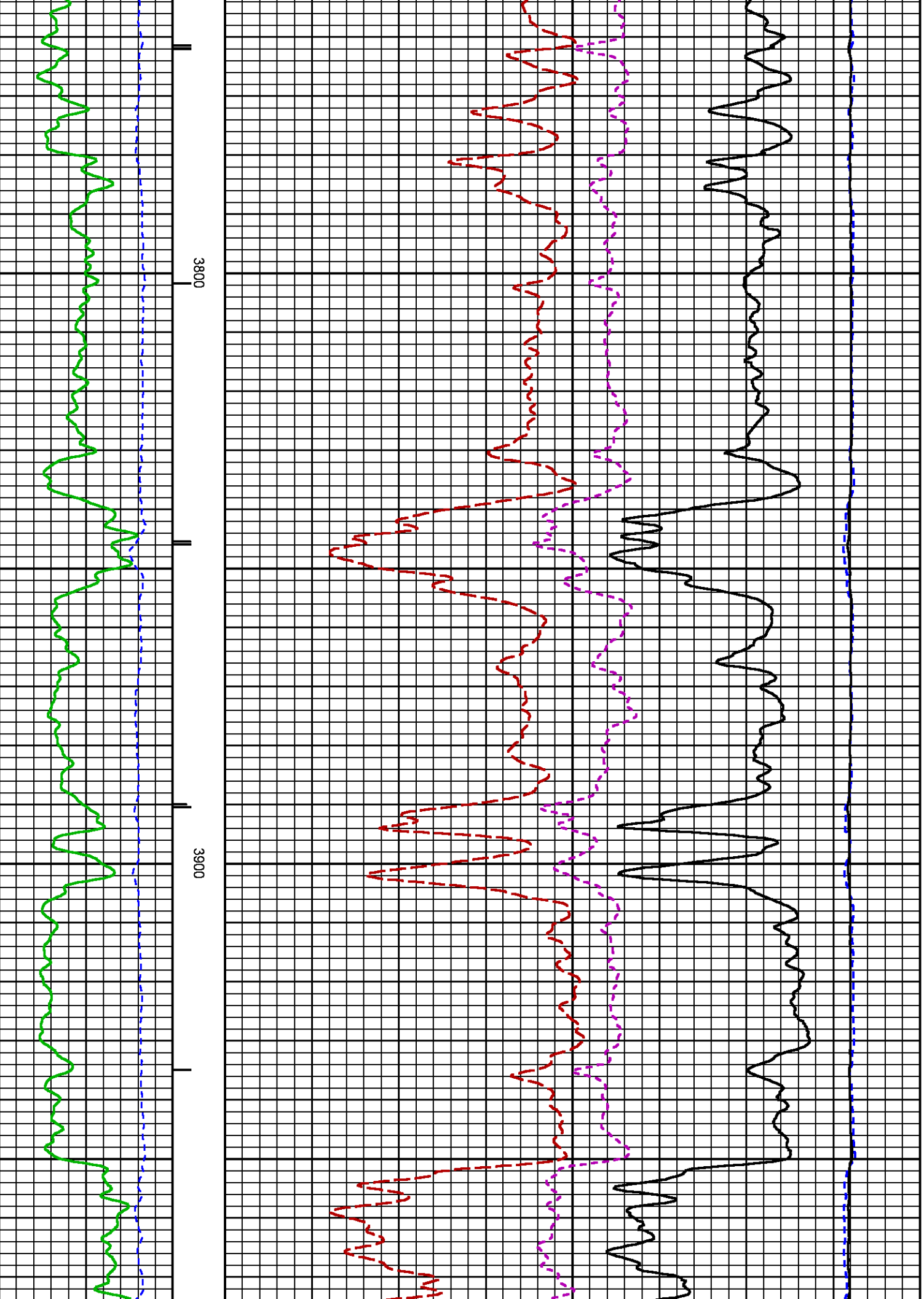
#### CURVE MEASURE POINT OFFSET

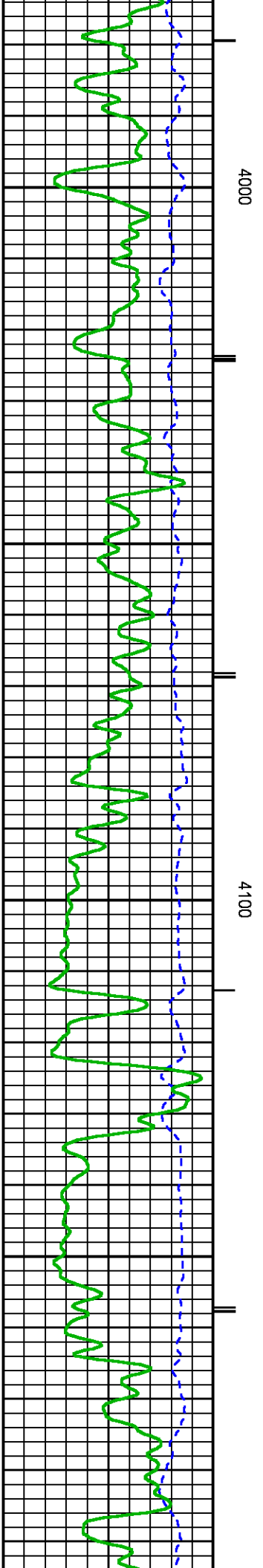
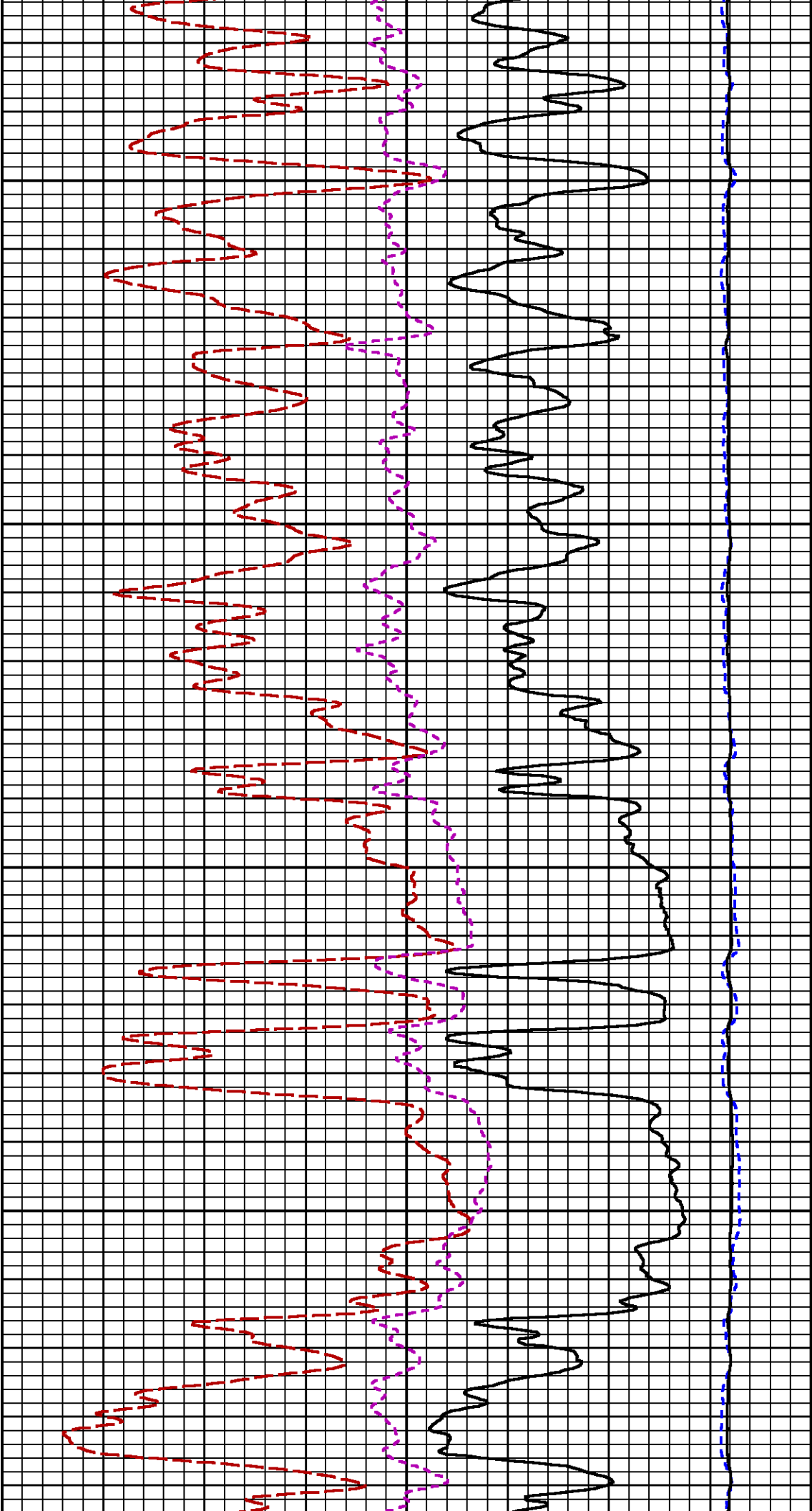
CURVE	OFFSET (ft)	CURVE	OFFSET (ft)	CURVE	OFFSET (ft)	CURVE	OFFSET (ft)
CCL	25.00	ISS	12.75	RATO	12.75	SGFC	12.75
GR	22.75	LS	12.75	RICS	12.75	SS	12.75

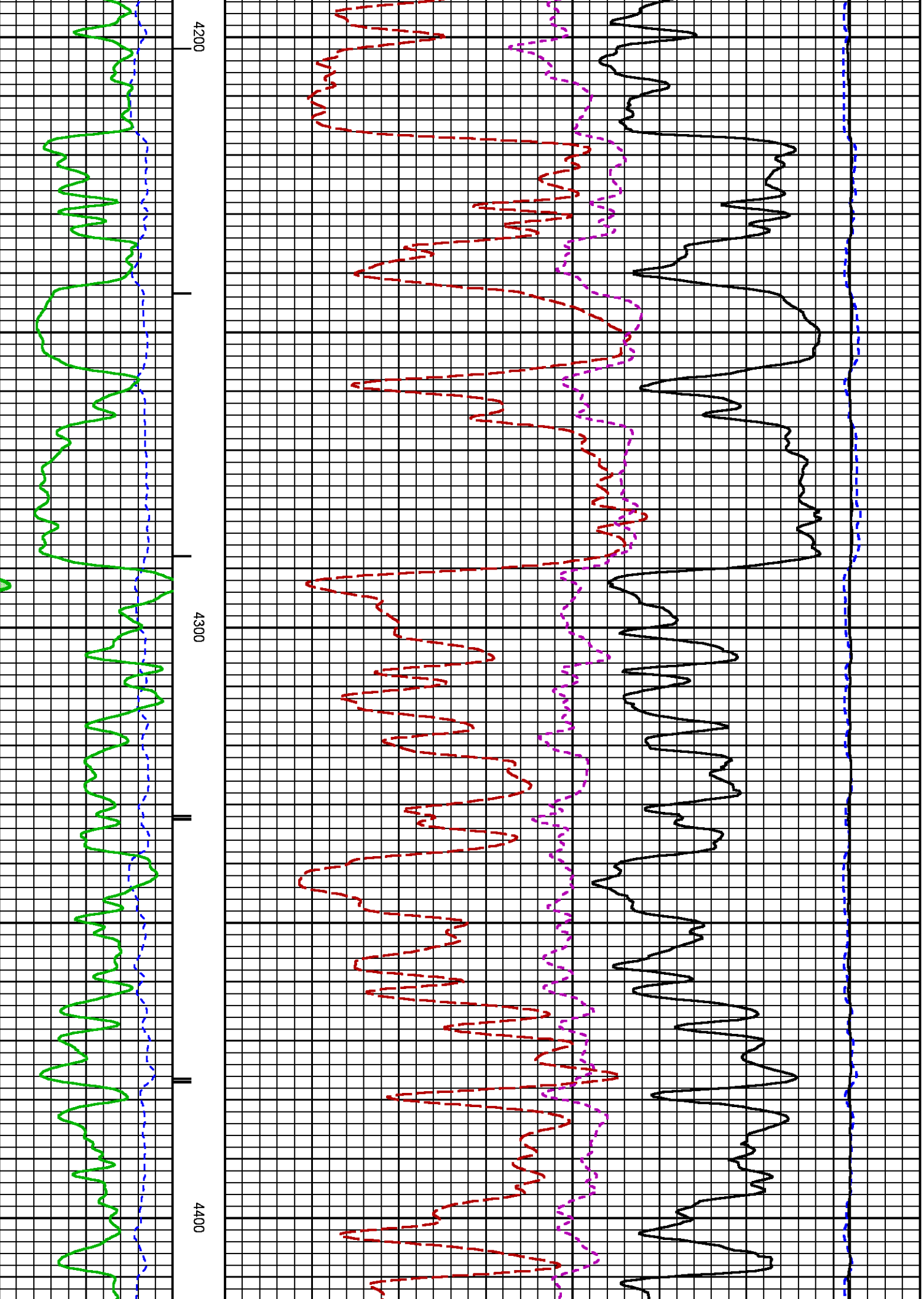
Presentation : HL6670:WPX\_rpm\_pnc3D\_MAIN.fvpdf [5"/100' Scale]  
Plot Interval : 3615 - 6712.5 Feet

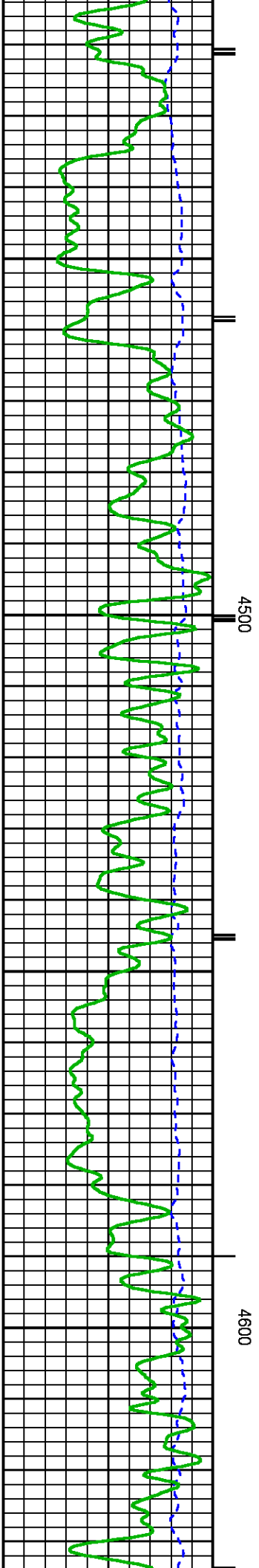
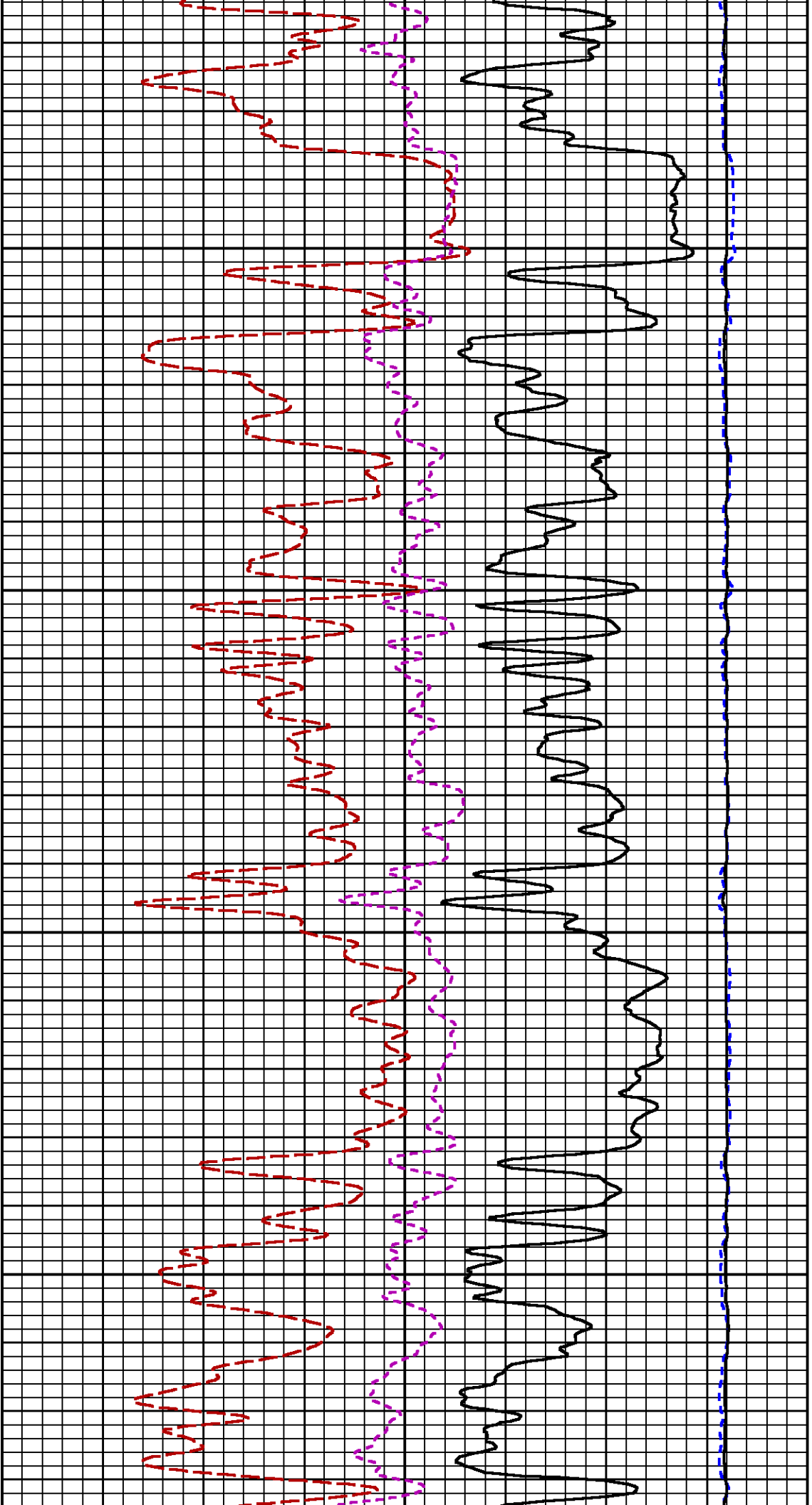
Data File 1 : F1 : HL6670:/dat1a/CH087294/n354h04\_M.xtf  
Created On : Jun 29 14:03:12 2014  
Company : WPX ENERGY INC  
Well : C & C ENERGY GM 423-13  
Field : GRAND VALLEY  
File Interval : 14.5 - 6712.5 Feet  
OCT : n354h

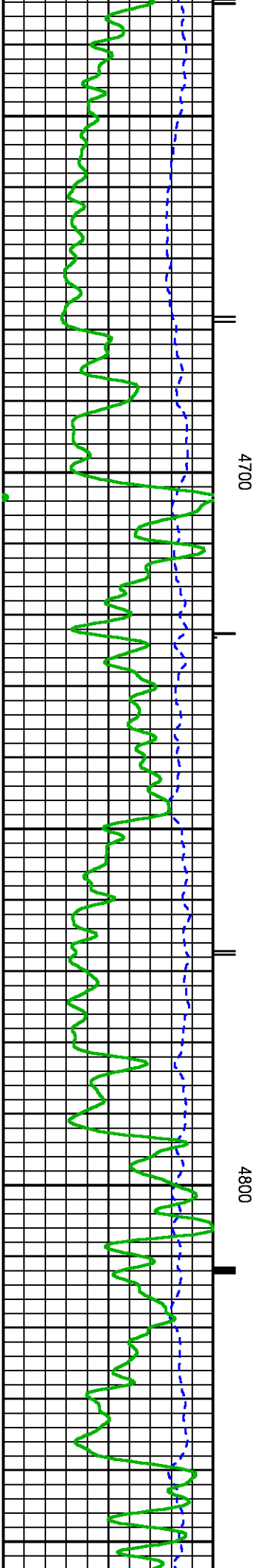
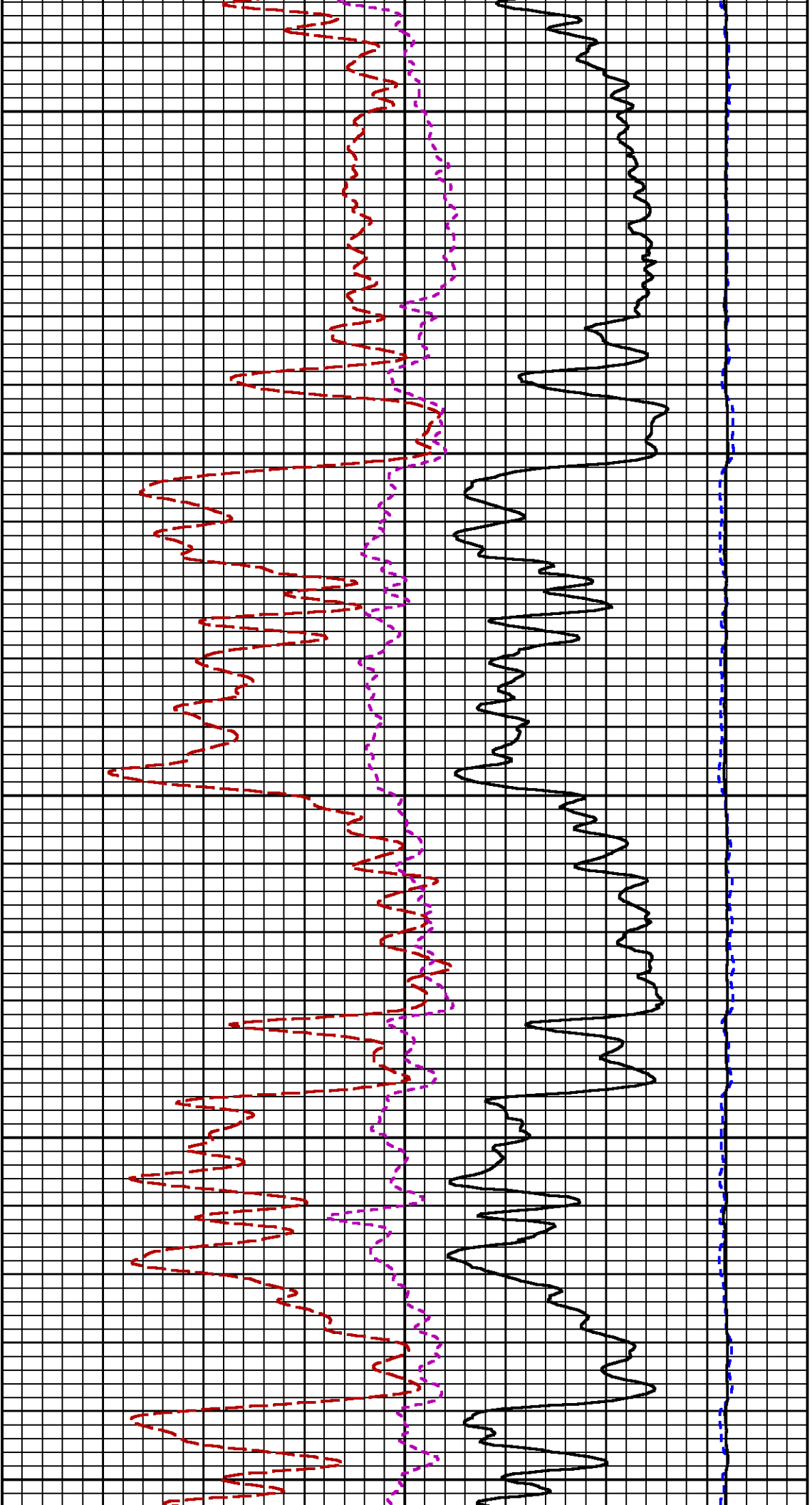




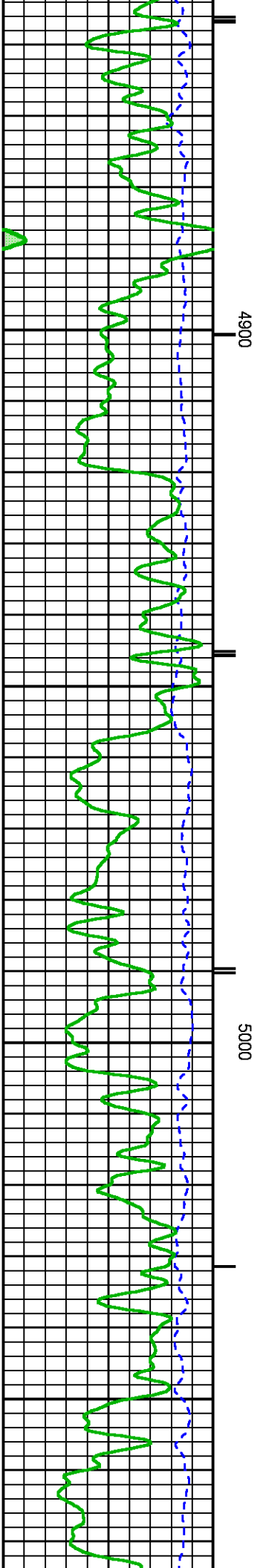
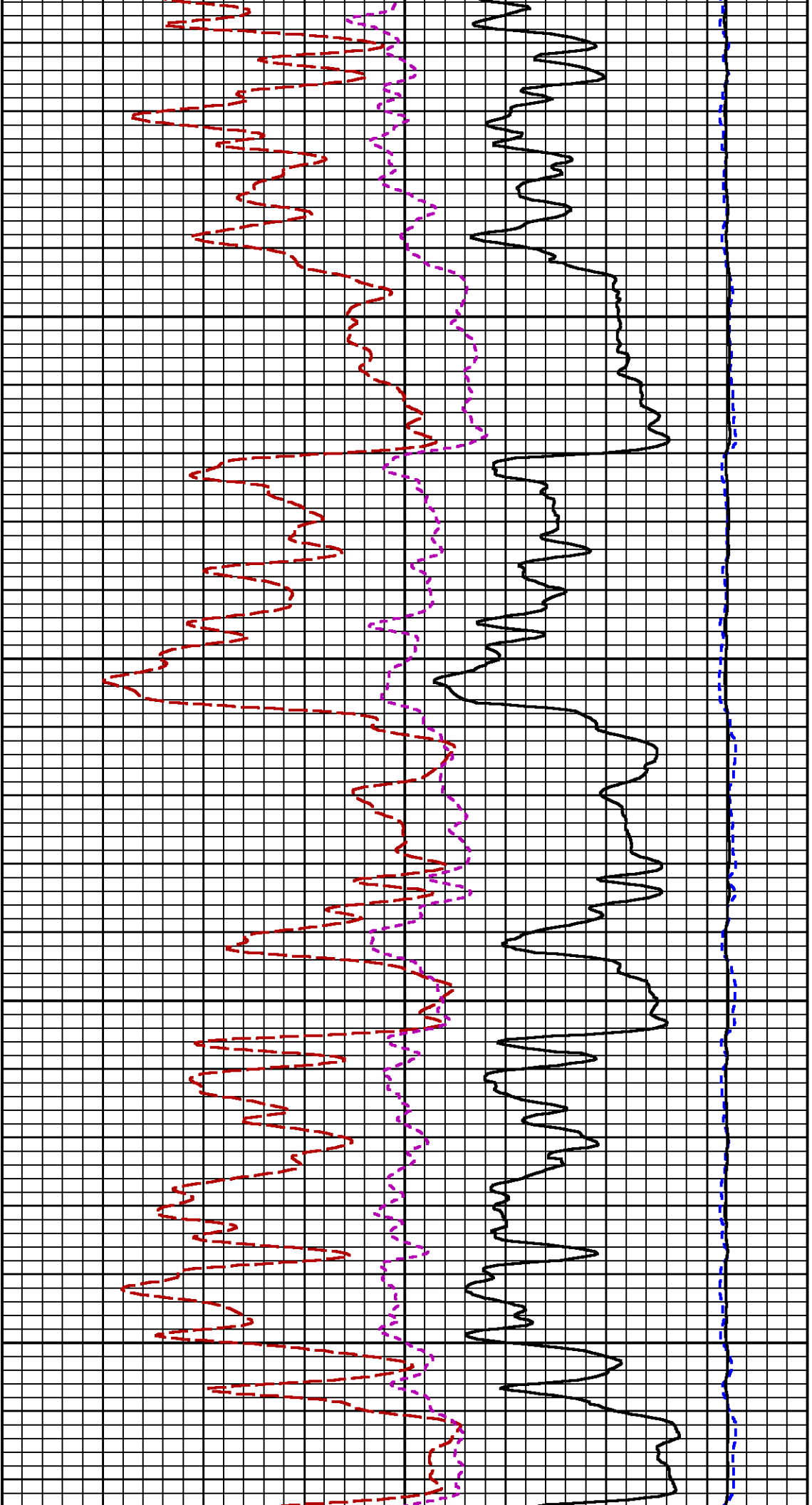


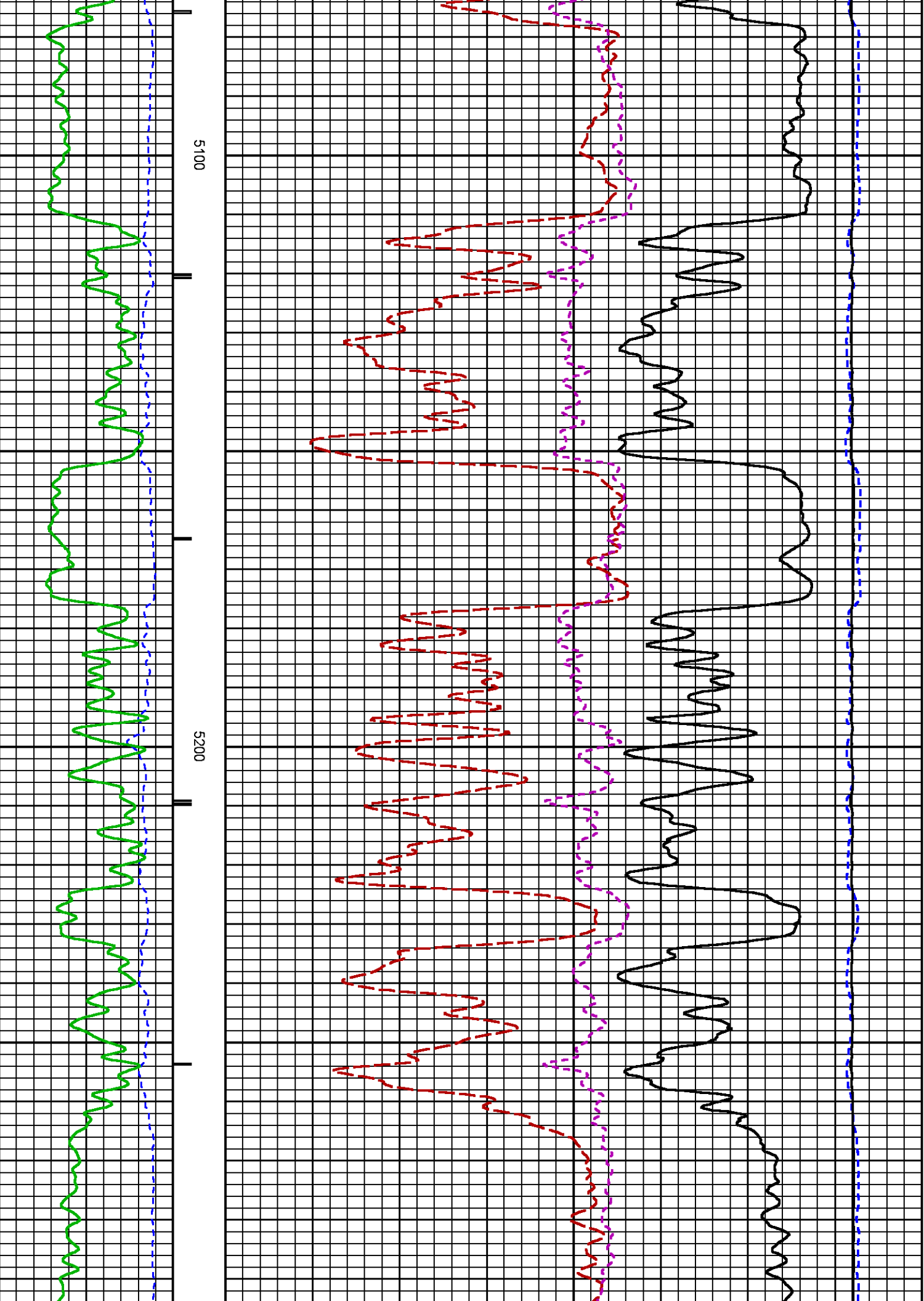


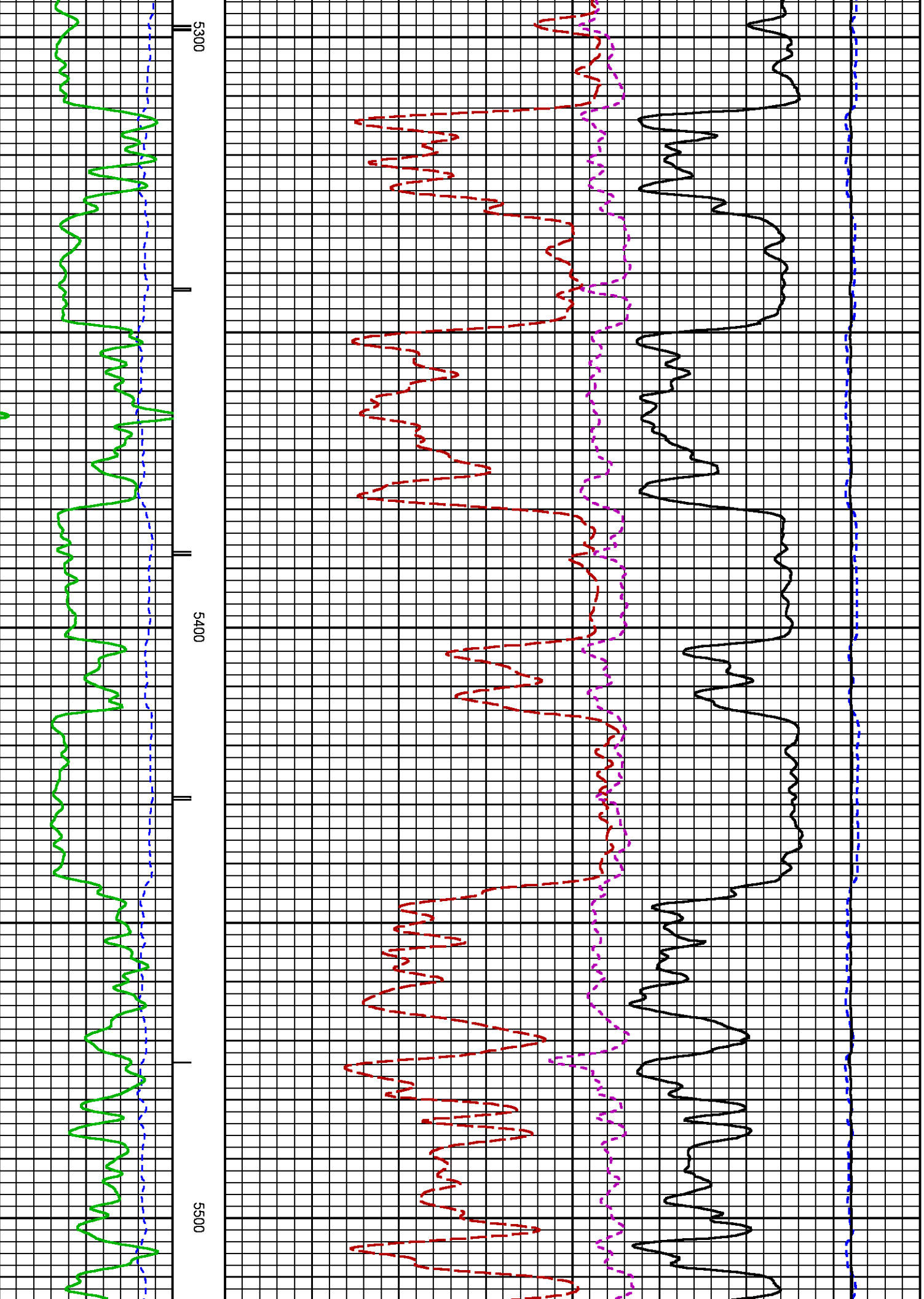


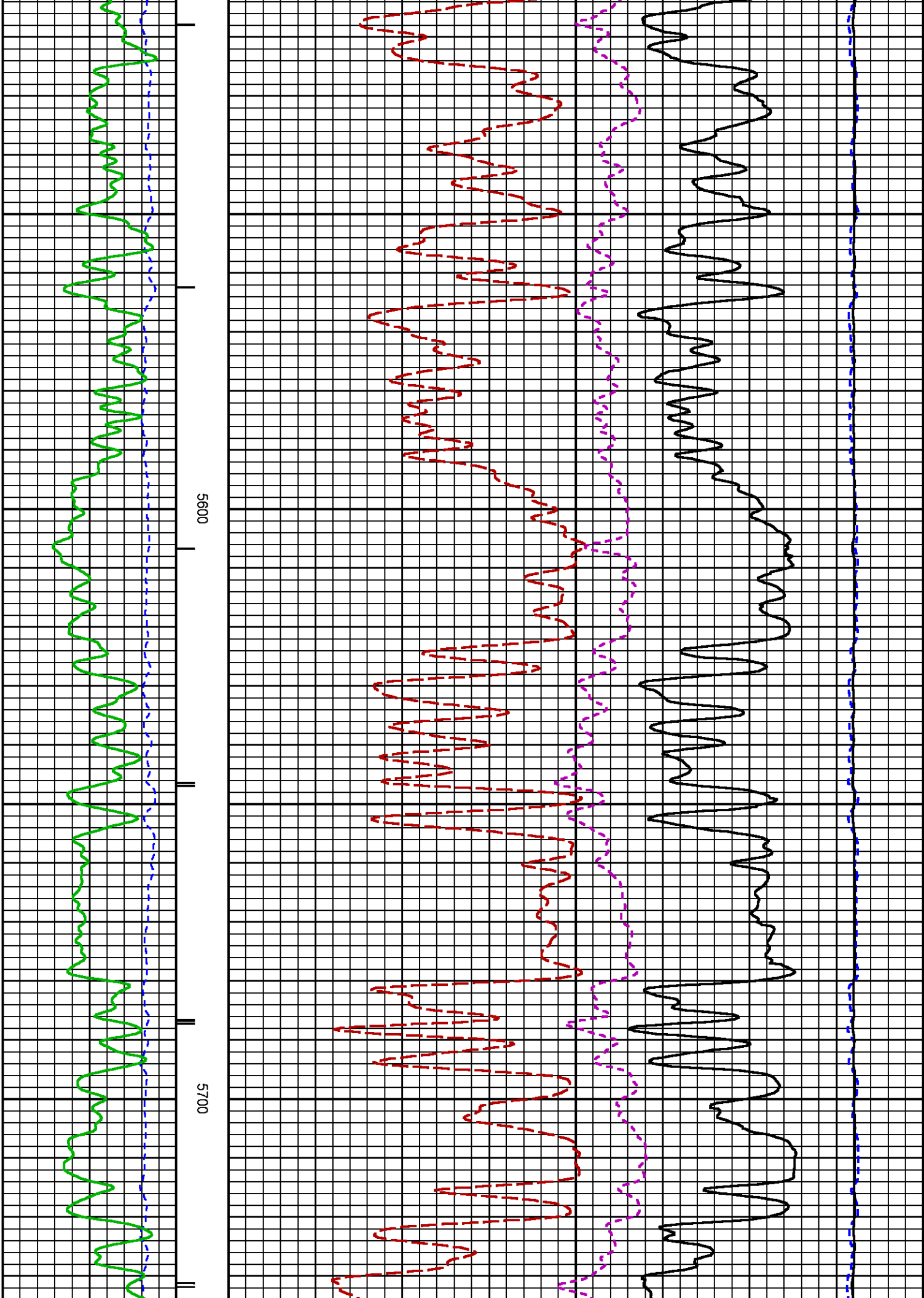


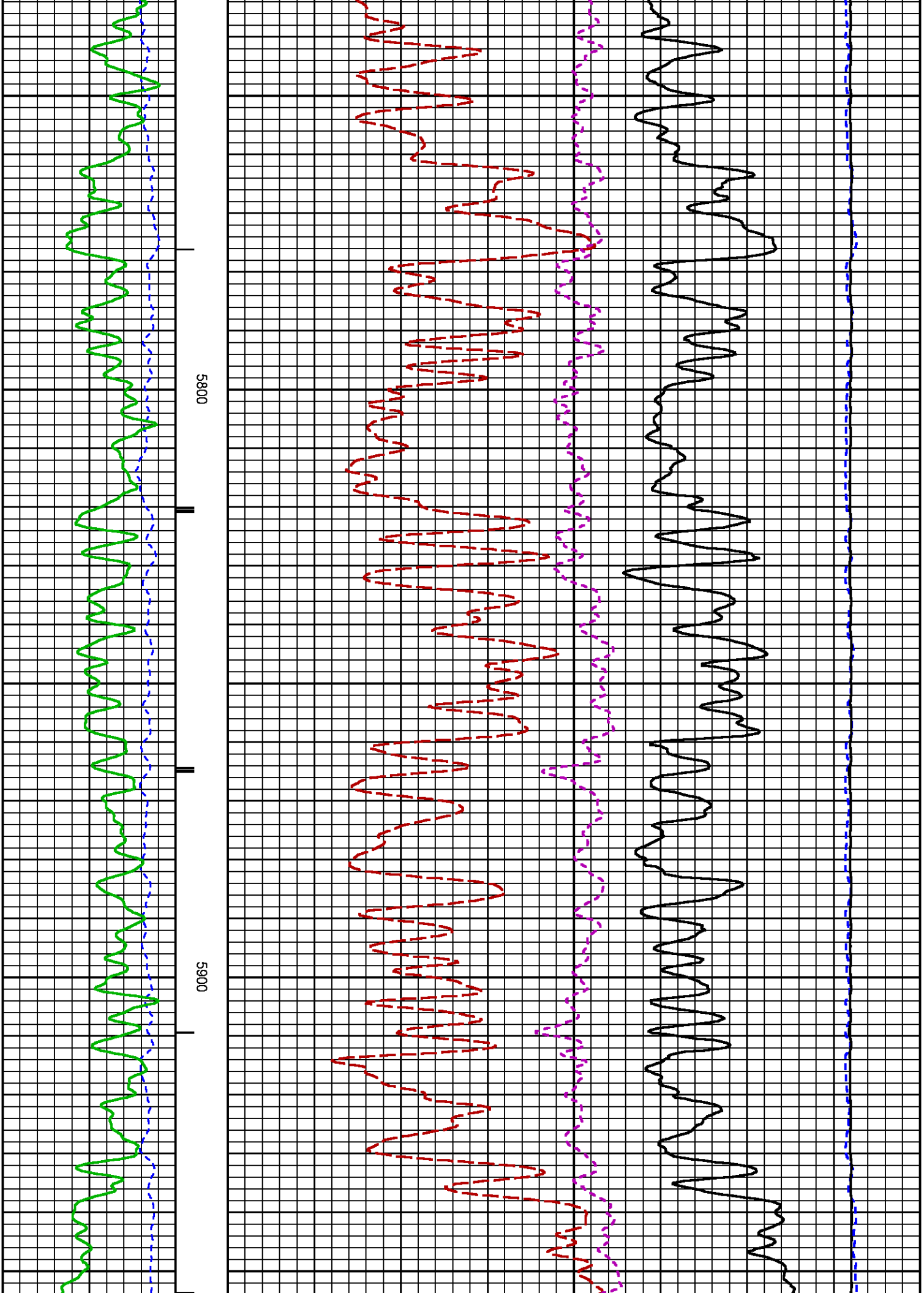


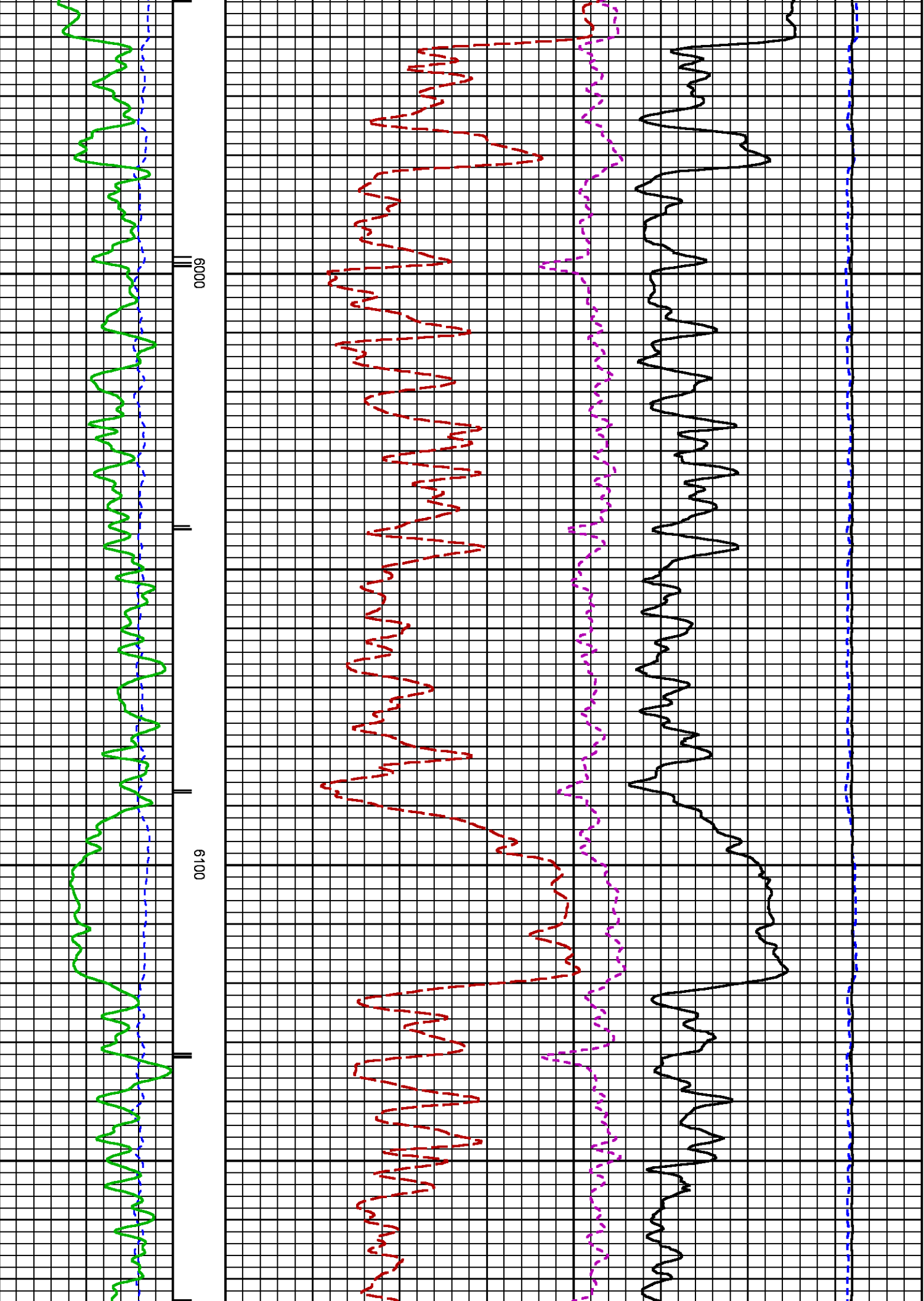


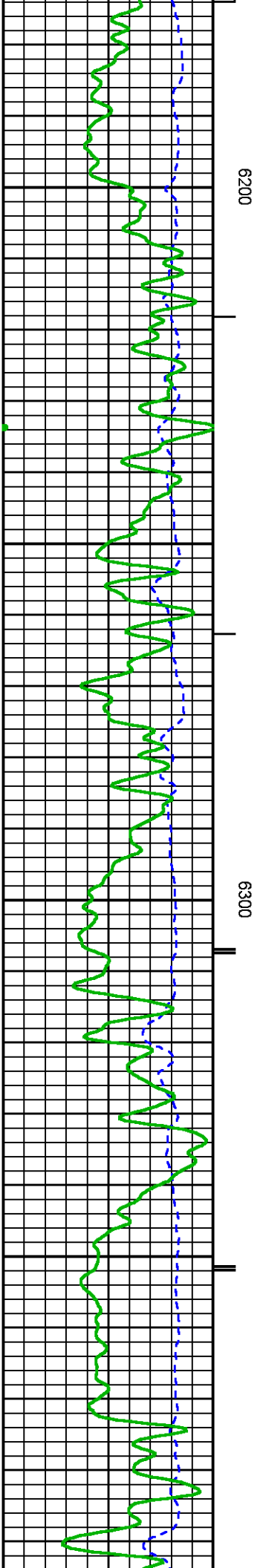
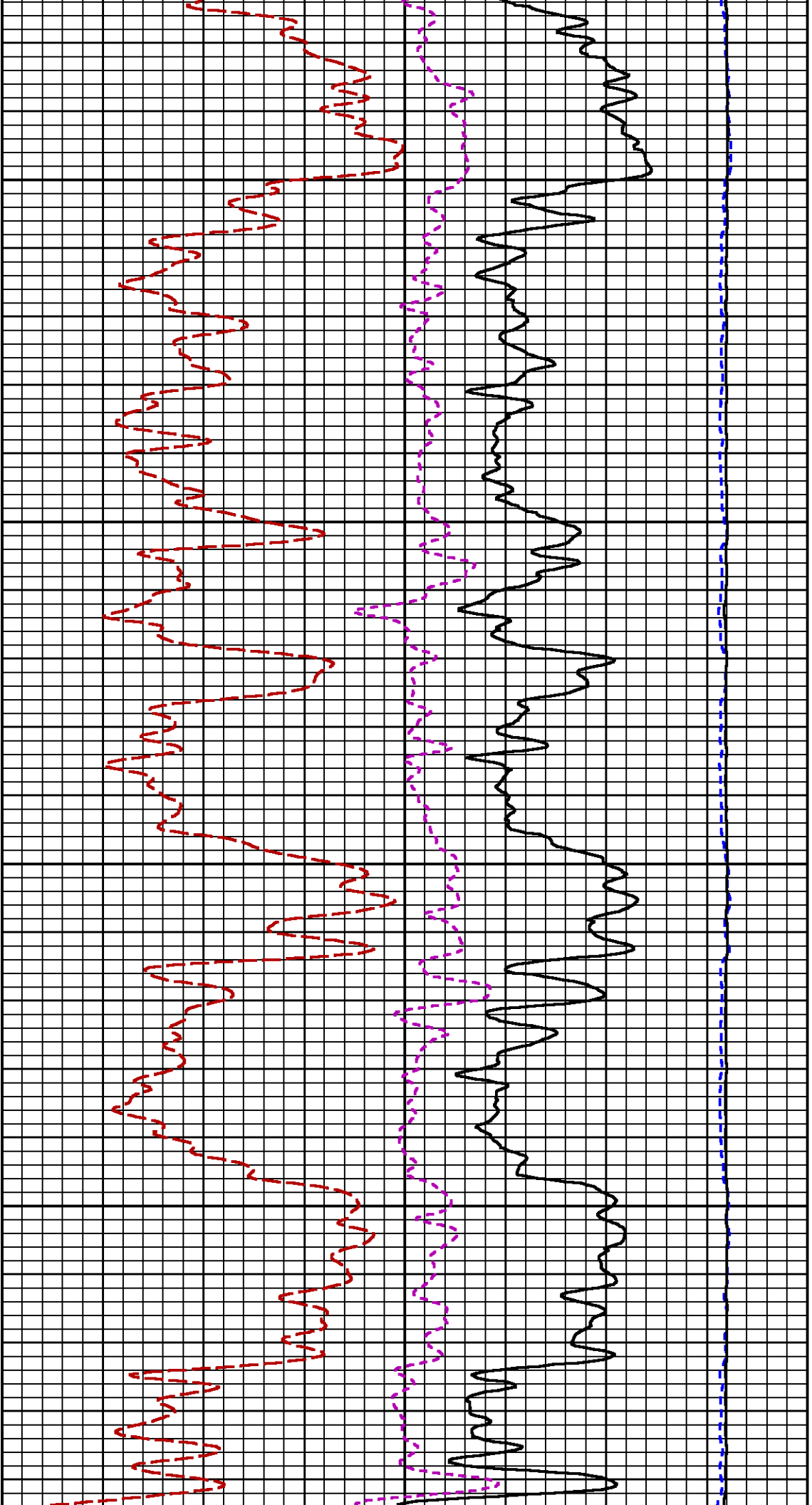


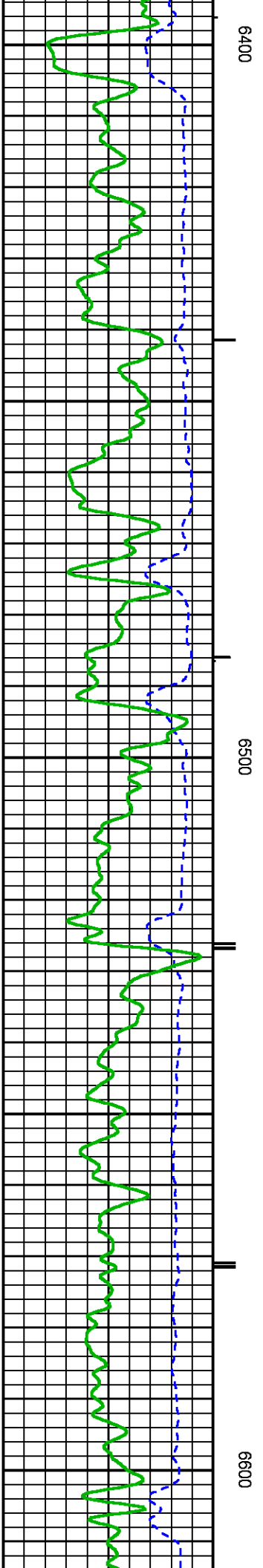
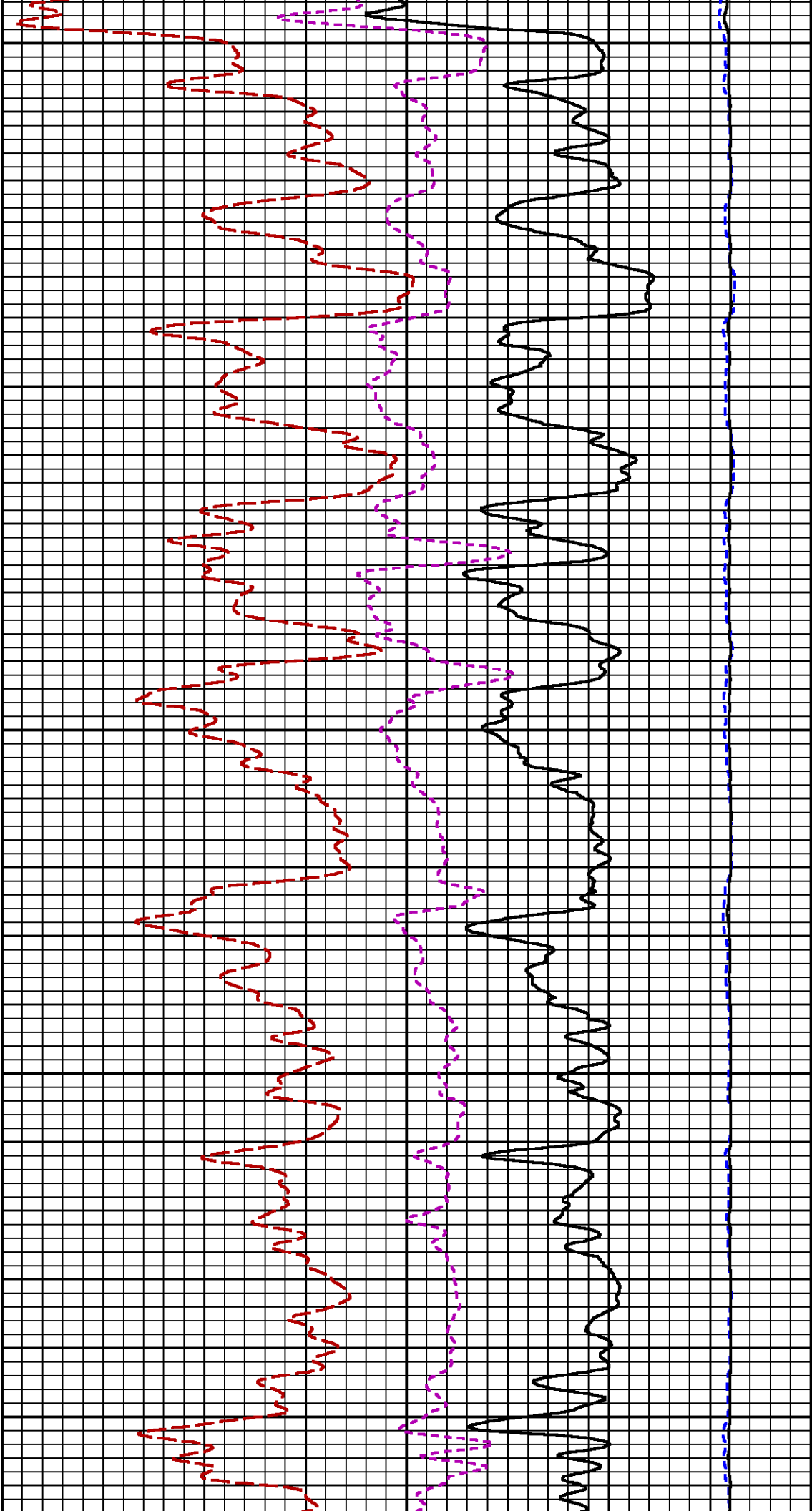
















LOGGING MODE: DEPTH DIRECTION: OF  
TOP DEPTH: 5847.125 ft BOTTOM DEPTH: 6246.625 ft

### SYMMETRIC FILTER

MEASUREMENT TYPE	PARAMETER	VALUE	UNITS	INTERVAL (ft)
GR	FILTER ()	medium (1)		TOP BOTTOM

### RPM PROCESSING

MEASUREMENT TYPE	PARAMETER	VALUE	UNITS	INTERVAL (ft)
PNC Parameters	BOREHOLE CONTENTS	FLUID		TOP BOTTOM
	OPEN/CASED HOLE	CASED HOLE		" "
	BOREHOLE SIZE	8.75	in	" "
	CASING SIZE	4.50	in	" "
	MATRIX	SANDSTONE		" "
	CORRECTION BUFFER	11		" "

### CURVE DESCRIPTION REPORT

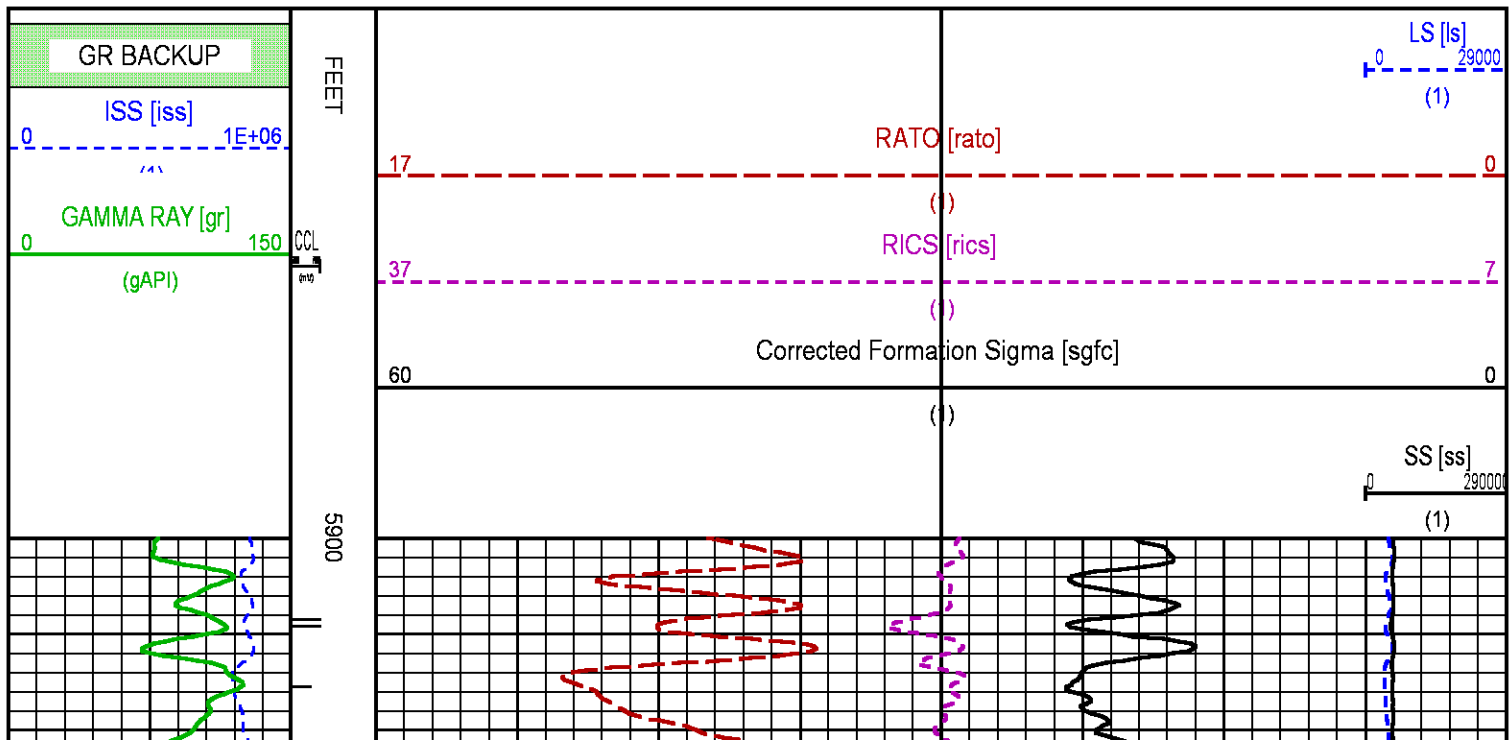
CURVE NAME	CREATION DATE	CURVE DESCRIPTION
F1:CCL	Jun 29 13:20:41 2014	CASING COLLAR LOCATOR
F1:GR	Jun 29 13:20:41 2014	GAMMA RAY
F1:ISS	Jun 29 13:20:41 2014	INELASTIC SHORT SPACE COUNT RATE
F1:LS	Jun 29 13:20:41 2014	LONG SPACE COUNT RATE
F1:RATO	Jun 29 13:20:41 2014	SHORT/LONG SPACE COUNT RATE RATIO
F1:RICS	Jun 29 13:20:41 2014	SHORT SPACE INELASTIC TO CAPTURE COUNT RATE RATIO (ISS/CSS)
F1:SGFC	Jun 29 13:20:41 2014	CORRECTED FORMATION SIGMA
F1:SS	Jun 29 13:20:41 2014	SHORT SPACE COUNT RATE

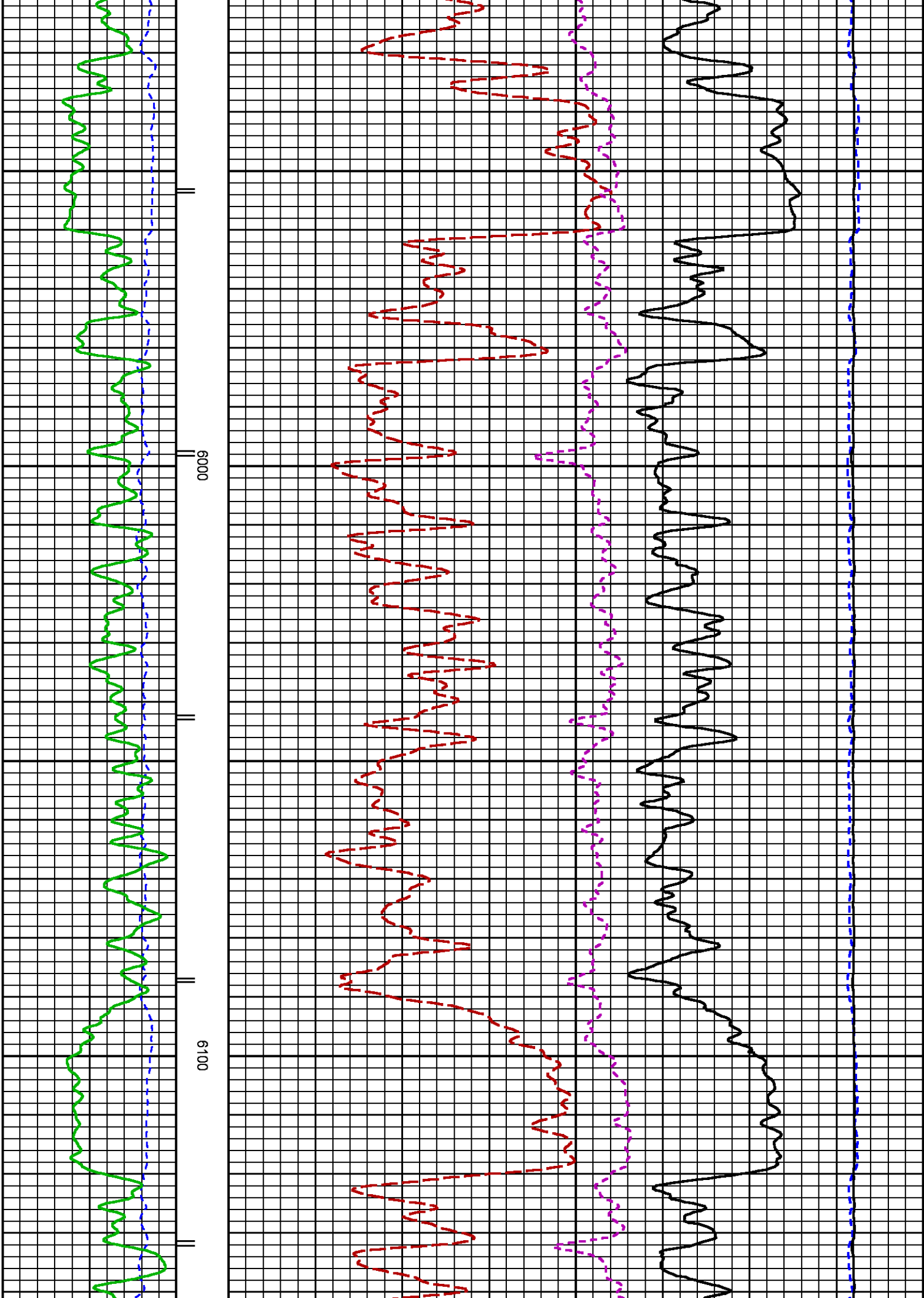
### CURVE MEASURE POINT OFFSET

CURVE	OFFSET (ft)	CURVE	OFFSET (ft)	CURVE	OFFSET (ft)	CURVE	OFFSET (ft)
CCL	25.00	ISS	12.75	RATO	12.75	SGFC	12.75
GR	22.75	LS	12.75	RICS	12.75	SS	12.75

Presentation : HL6670:WPX\_rpm\_pnc3D\_REPEAT.fvpdf [5"/100' Scale]  
Plot Interval : 5900 - 6200 Feet

Data File 1 : F1 : HL6670:/dat1a/CH087294/n354h01\_R.xtf  
Created On : Jun 29 13:20:41 2014  
Company : WPX ENERGY INC  
Well : C & C ENERGY GM 423-13  
Field : GRAND VALLEY  
File Interval : 5819.5 - 6244 Feet  
OCT : n354h







## RPM\_PNC\_3D PRIMARY CALIBRATION SUMMARY

TOOL: 8283PA 10466231

DATE/TIME PERFORMED: Sat Jun 7 13:46:01 2014

UNIT: 3880TA HL6670

CALIBRATOR: 2437XB 112674

SOURCE: 8281AA 11724361

HOURS: 8281AA 150

	ISS	Mtr VIts (V)	SS Gain	LS Gain	XLS Gain	EA Temp (degF)	Sync Delay (usec)	RCAL
Raw Data	793110	120	2274	2285	2265	136	7	0.9713
Interpolated	1300000	142	2257	2280	2263			

	ISS	BKS	BKL	BKX	SGA1	SDA1	SGA2	SDA2
Raw Data	793110	6702	1051	147	26.05	0.15	24.16	0.33
					25.35 26.40	0.00 0.20	23.60 24.80	0.00 0.40

	ISS	ILS	IXS	SS	SS2	LS	CSS	CLS
Raw Data	793110	163084	25428	88862	31655	8202	53870	13116
Fit Quality %		1.050	1.105	1.067	1.070	1.105	1.011	1.080

	ISS	RBOR	RIN ISS/LS	RIN13 ISS/XS	RICS ISS/CSS	RATO SS/LS	RTWO SS2/LS	RONE CSS/CLS
Raw Data	793110	1.44	4.86	31.21	14.72	10.84	3.86	4.11
		1.42 1.45	3.55 5.52	22.20 32.70	10.99 16.34	10.06 11.10	3.57 3.95	3.76 4.22
Fit Quality %		0.032	0.127	0.067	0.089	0.111	0.100	0.071
Reduced	1399095	1.43	4.86	31.17	14.69	10.86	3.87	4.11
		1.42 1.45	4.33 5.52	27.60 32.70	13.70 16.34	10.06 11.10	3.57 3.95	3.76 4.22

## TPSETEMP PRIMARY CALIBRATION SUMMARY

TOOL #: 8255XA 166341

DATE/TIME PERFORMED: Sat Jun 28 11:12:23 2014

UNIT #: 3880TA HL6670

	T(0)	T(1)	T(2)	T(3)
Corr Coeff for Temp	1.112722E-05	-6.595931E-12	3.011507E-19	-2.270919E-26

## INSTRUMENT CONFIGURATION

Source File: /dat1a/CH087294/RPM\_TEMP.tdg

A3 CABLEHEAD  
Diameter : 1.37"

PCM POWER SUPPLY  
Diameter : 1.70"  
Length : 3.86'  
Weight : 18 lbs  
Series : 8250EA  
Mnemonic : PCM

33.24'

---

TELEMETRY / CCL

Diameter : 1.70"  
Length : 4.46'  
Weight : 20 lbs  
Series : 8248ED  
Mnemonic : PCM  
Measure Point: 1.00': CCL MP

CCL MP — 25.19'

---

SONDEX GAMMA RAY

Diameter : 1.69"  
Length : 2.17'  
Weight : 10 lbs  
Series : 2812LA  
Mnemonic : GR  
Measure Point: 0.62': GR MP

GR MP — 22.64'

---

RPM ELECTRONICS

Diameter : 1.70"  
Length : 4.48'  
Weight : 16 lbs  
Series : 8281EA  
Mnemonic : RPM

---

RPM C DETECTOR SECTION

Diameter : 1.70"  
Length : 9.40'  
Weight : 41 lbs  
Series : 8283PA  
Mnemonic : RPM  
Measure Point: 5.45': XLS DETECTOR  
Measure Point: 5.04': LS DETECTOR  
Measure Point: 4.79': SS DETECTOR

XLS DETECTOR — 13.58'  
LS DETECTOR — 13.16'  
SS DETECTOR — 12.91'

---

RPM SOURCE SECTION

Diameter : 1.70"  
Length : 4.70'  
Weight : 18 lbs  
Series : 8281FA  
Mnemonic : RPM

---

TEMPERATURE / PRESSURE

Diameter : 1.70"  
Length : 3.30'  
Weight : 13 lbs  
Series : 8255XA

Mnemonic : SRPL  
Measure Point: 1.52': TEMP MP

TEMP MP 1.65'  
PRES MP 0.00'

BULL PLUG 1 11/16

TOTAL LENGTH: 33.24'  
TOTAL WEIGHT: 140 lbs  
MAX DIAMETER: 0'1.70"



COMPANY WPX ENERGY INC  
WELL C & C ENERGY GM 423-13  
FIELD GRAND VALLEY  
COUNTY GARFIELD STATE CO

FILE NO: US087294  
API NO: 05045222620000

LOCATION:  
SHL: 277' FSL 1001' FWL S12 T7S R96W  
BHL: 2246' FNL 1223' FWL S13 T7S 96W  
SEC 13 TWP 7S RGE 96W

ELEVATIONS:  
KB 5165 FT  
DF  
GL 5141 FT  
DATE 29-Jun-2014

S13 T7S R96W  
PAD: GM 24-12  
RIG: HP-318

