



HIGH RESOLUTION INDUCTION

Company	Augustus Energy Resources, LLC	Company	Augustus Energy Resources, LLC
Well	Hays 31-03 2S44W	Well	Hays 31-03 2S44W
Field	Vernon	Field	Vernon
County	Yuma	County	Yuma
State	Colorado	State	Colorado
Location:	API # : 05-125-12088	Other Services	Density Neutron
Permanent Datum	GL	Elevation	3803
Log Measured From	KB		
Drilling Measured From	KB		
SEC 3	TWP 2S	RGE 44W	
710' FNL & 1466' FEL NWNE			
Run Number	1	Date	July 21, 2014
Depth Driller	2324		
Depth Logger	2311		
Bottom Logged Interval	2311		
Top Log Interval	Casing		
Casing Driller	406		
Casing Logger	406		
Bit Size	6.25"		
Type Fluid in Hole	WBM		
Density / Viscosity	8.7 / 28		
pH / Fluid Loss	9.0 / 7.0		
Source of Sample	Flowline		
Rm @ Meas. Temp	0.26 @ 68 F		
Rmf @ Meas. Temp	0.21 @ 68 F		
Rmc @ Meas. Temp	0.31 @ 68 F		
Source of Rmf / Rmc	Calc / Calc		
Rm @ BHT	0.17 @ 102 F		
Time Circulation Stopped	2245 7/20/14		
Time Logger on Bottom	0230		
Maximum Recorded Temperature	102 F		
Equipment Number	48		
Location	Ft. Morgan, CO		
Recorded By	Clint Christensen		
Witnessed By	Justin Stone		

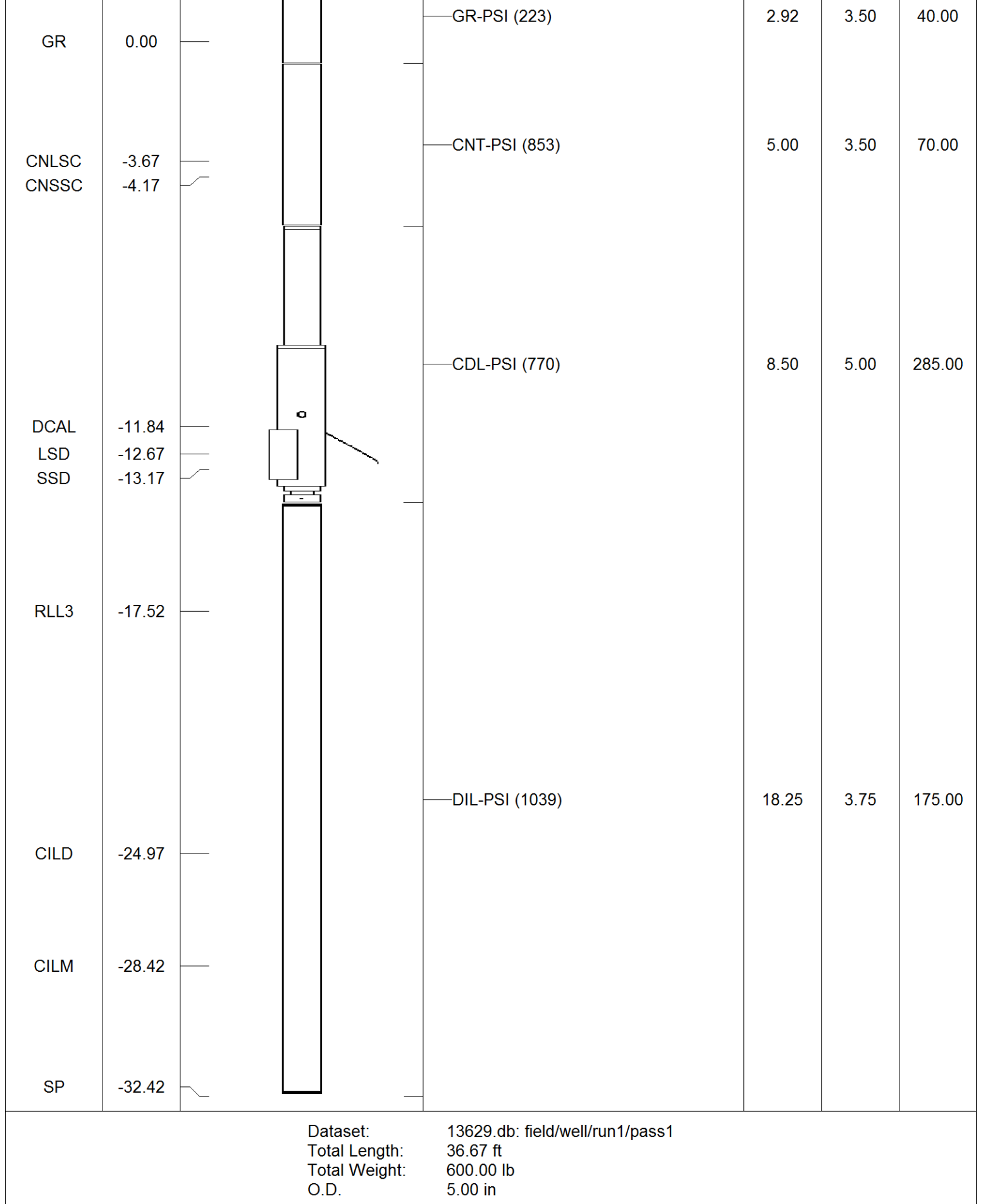
<<< Fold Here >>>

All interpretations are opinions based on inferences from electrical or other measurements and Pioneer Wireline Services, LLC cannot and does not guarantee the accuracy or correctness of any interpretation, and Pioneer Wireline Services, LLC will not be liable or responsible for any loss, costs, damages, or expenses incurred or sustained by anyone resulting from any interpretation made by any of our officers, agents or employees.

Comments

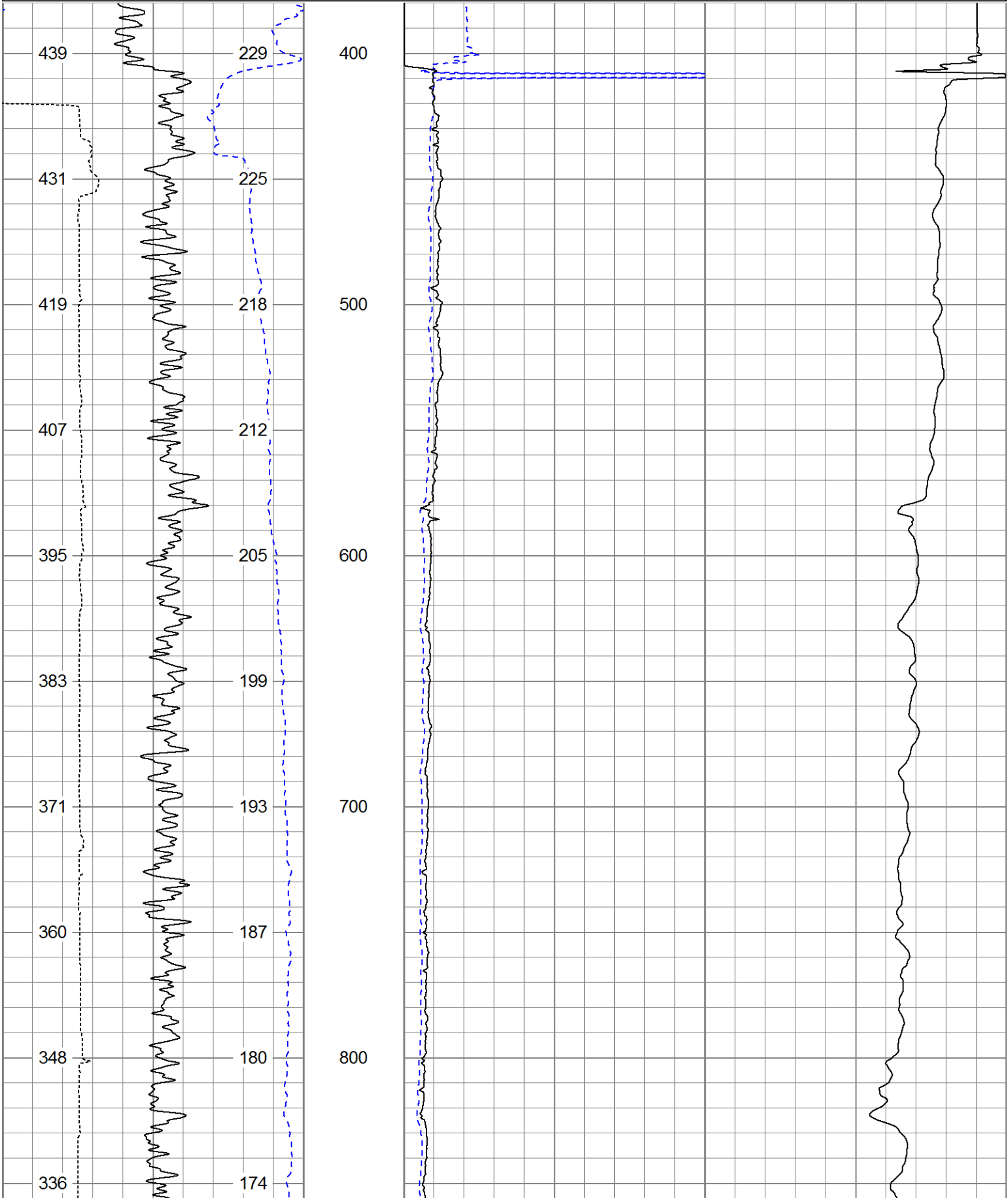
Annular volume calculated for 4.5" casing
Excell Drilling Rig 2
Thank you for using Pioneer Energy Services.

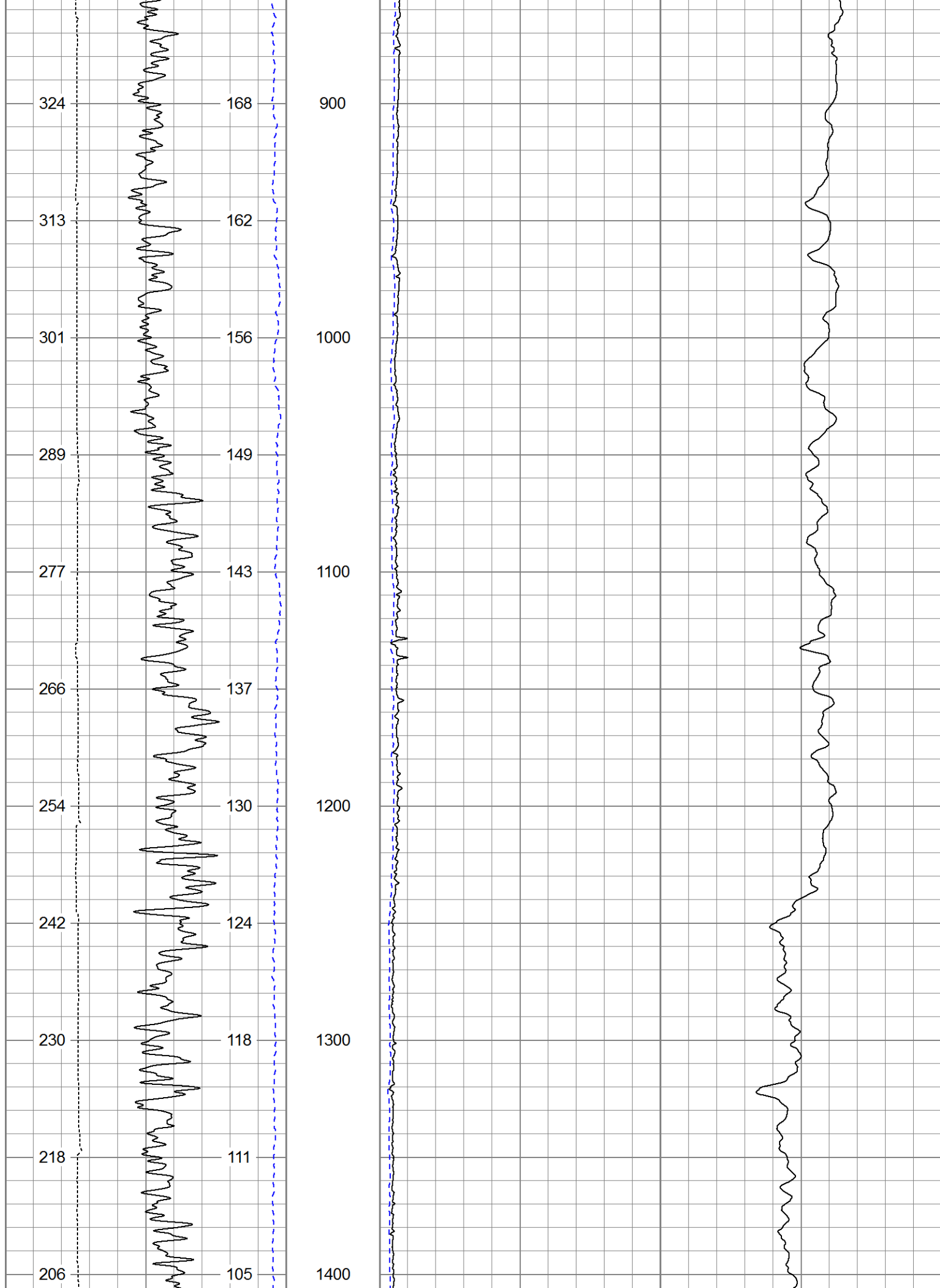
Sensor	Offset (ft)	Schematic	Description	Len (ft)	OD (in)	Wt (lb)
			CHD (~0)	2.00	3.50	30.00

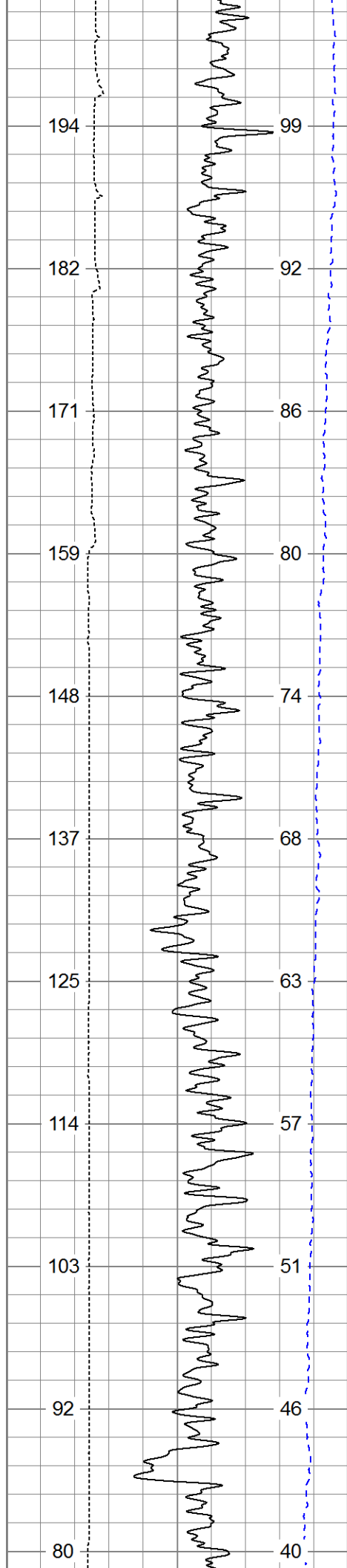


Database File: 13629.db
 Dataset Pathname: pass3
 Presentation Format: dilin60
 Dataset Creation: Mon Jul 21 03:05:28 2014 by Log 0
 Charted by: Depth in Feet scaled 1:600

Charted by:			Depth in Feet scaled 1.000					
0	Gamma Ray (GAPI)	200	0	Deep Resistivity (Ohm-m)	50	1000	CILD (mmho/m)	0
0	SP (mV)	200	0	Shallow Resistivity (Ohm-m)	50			
4	Caliper (in)	14	50	RILD (Ohm-m)	500			
TBHV (ft3)		ABHV (ft3)	50	RLL3 (Ohm-m)	500			







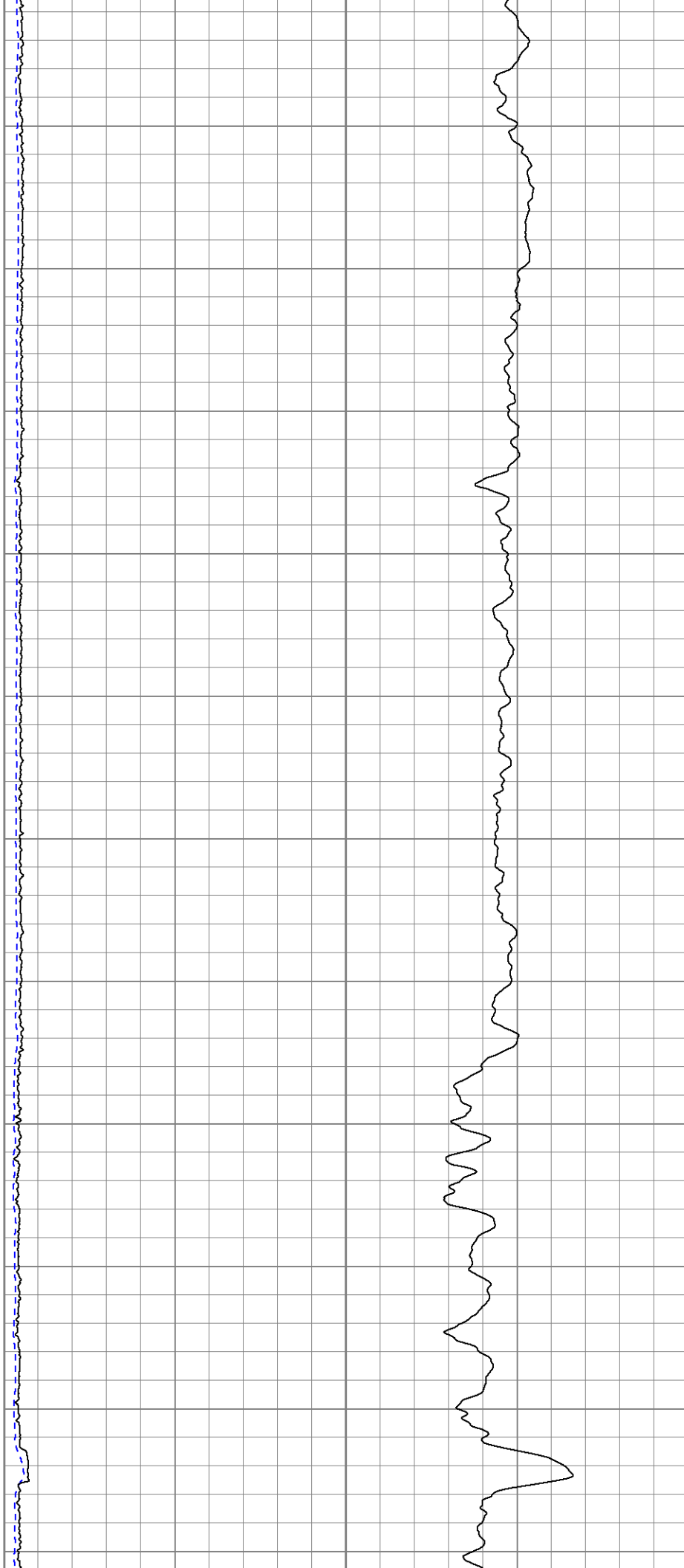
1500

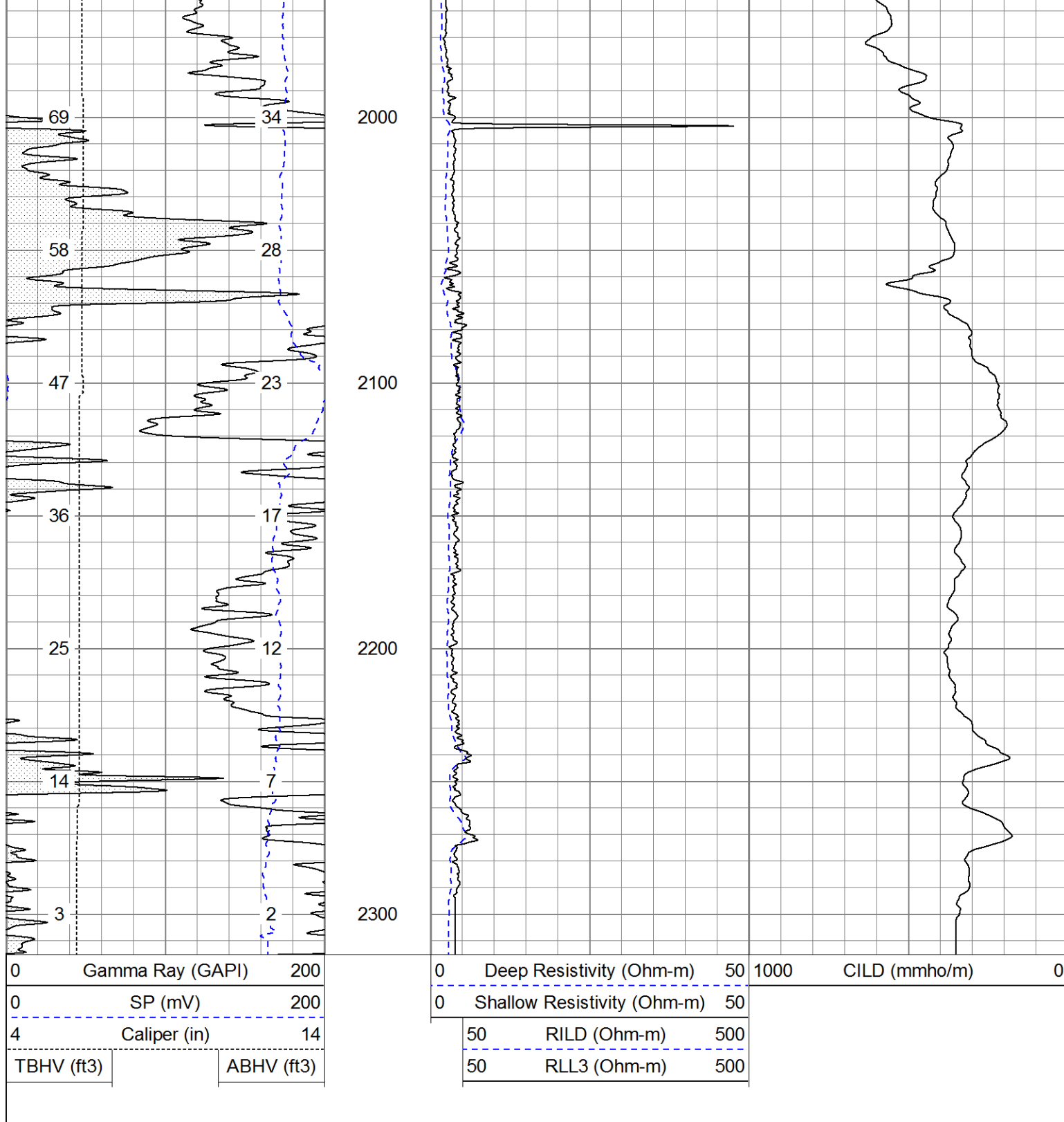
1600

1700

1800

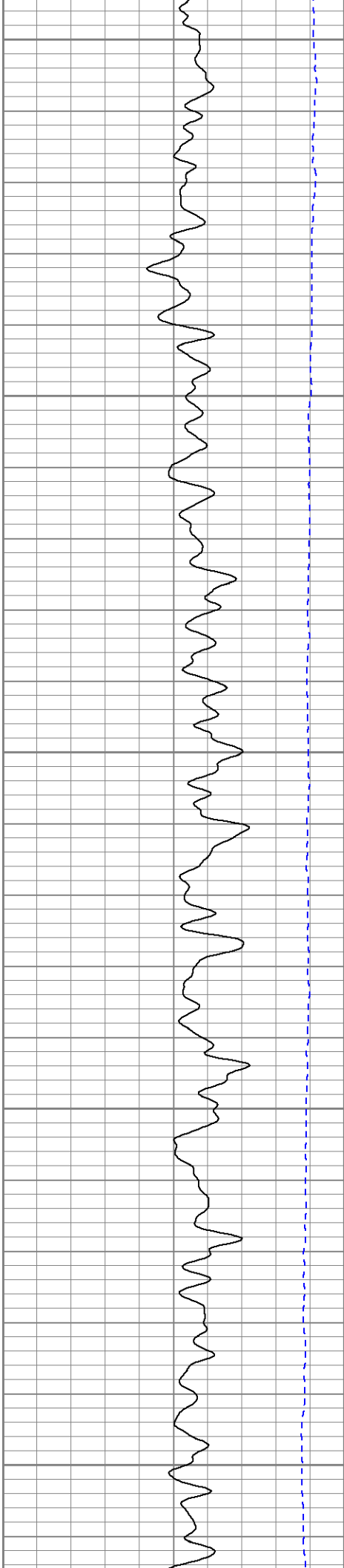
1900





Database File: 13629.db
 Dataset Pathname: pass3
 Presentation Format: dil
 Dataset Creation: Mon Jul 21 03:05:28 2014 by Log 0
 Charted by: Depth in Feet scaled 1:240

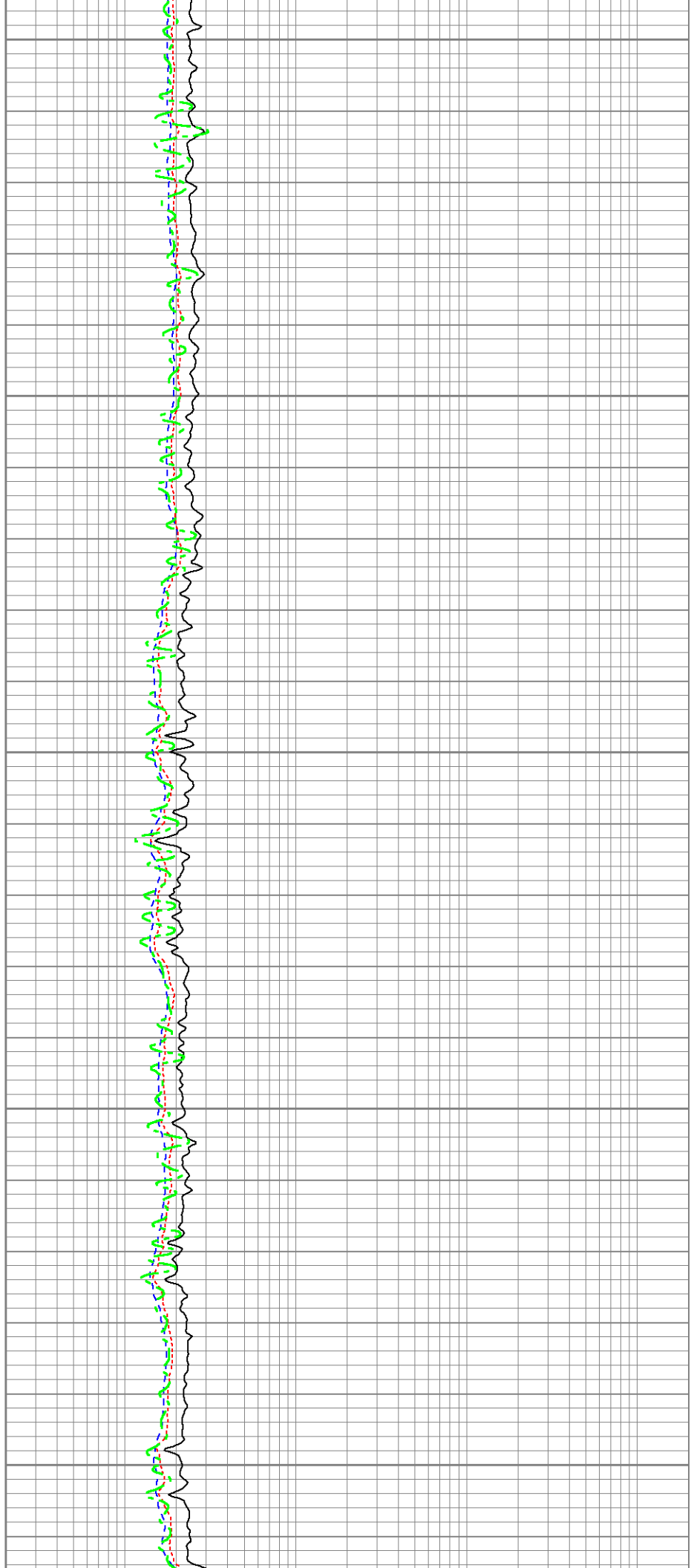
0	Gamma Ray (GAPI)	200	0.2	Deep Resistivity (Ohm-m)	2000
0	SP (mV)	200	0.2	Shallow Resistivity (Ohm-m)	2000
			0.2	Medium Resistivity (Ohm-m)	2000
			0.2	Rt (Ohm-m)	2000

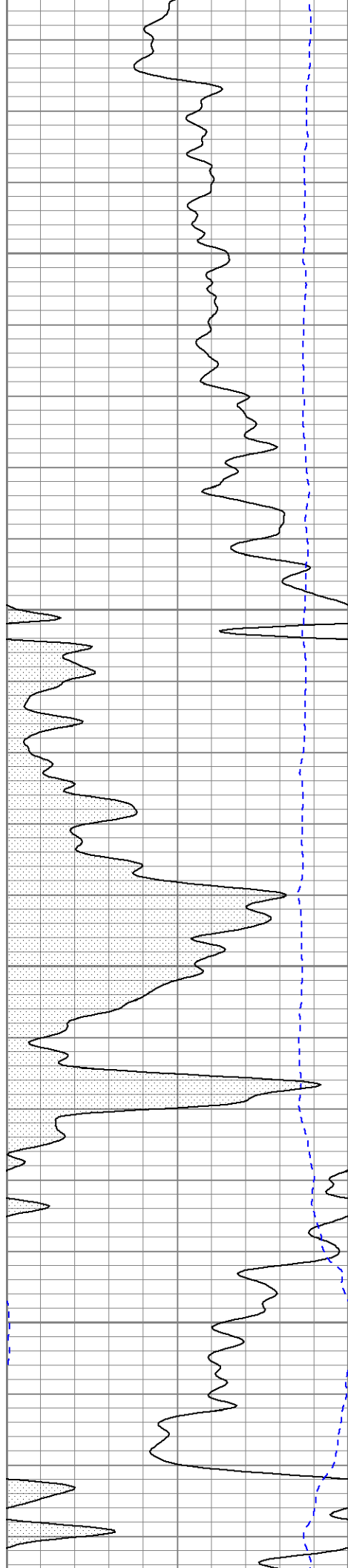


1700

1800

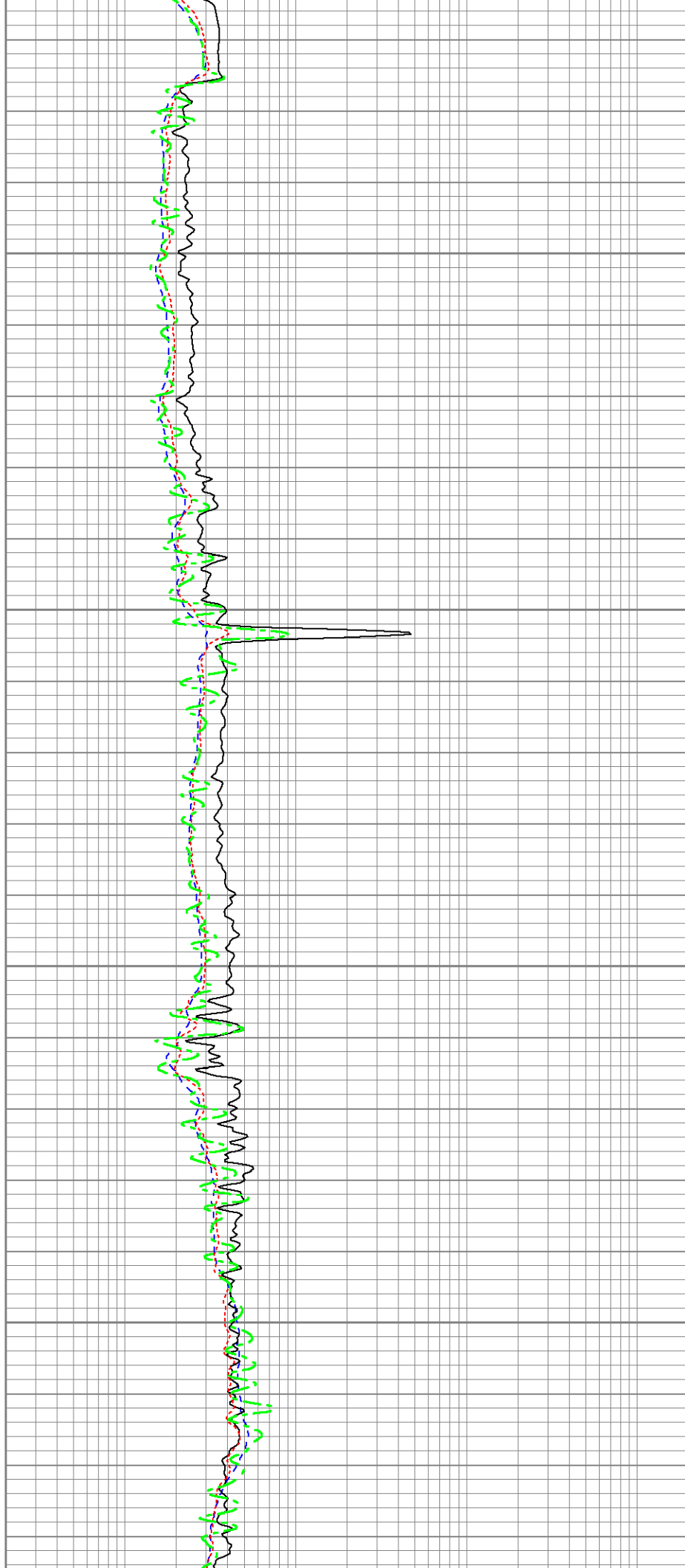
1900

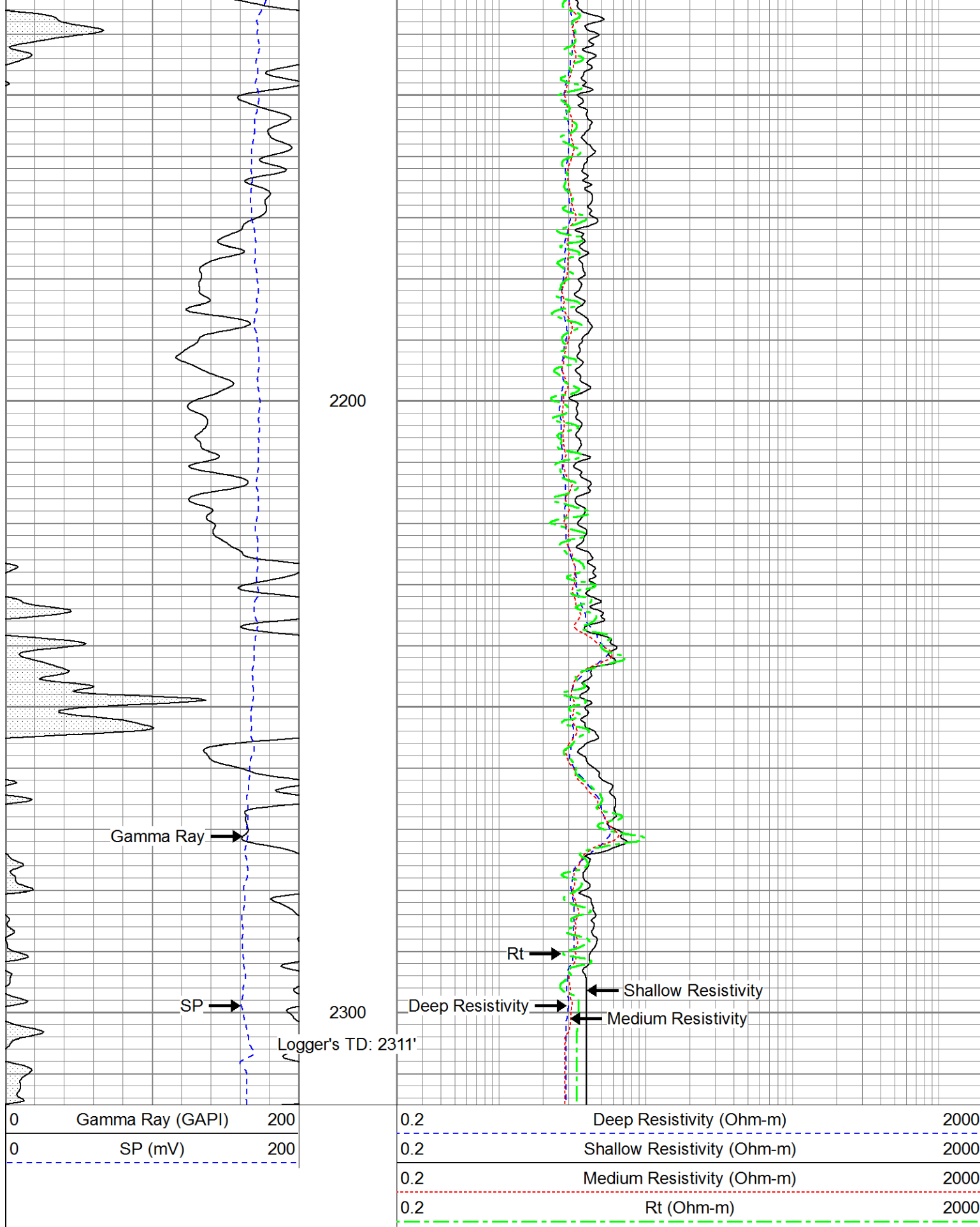




2000

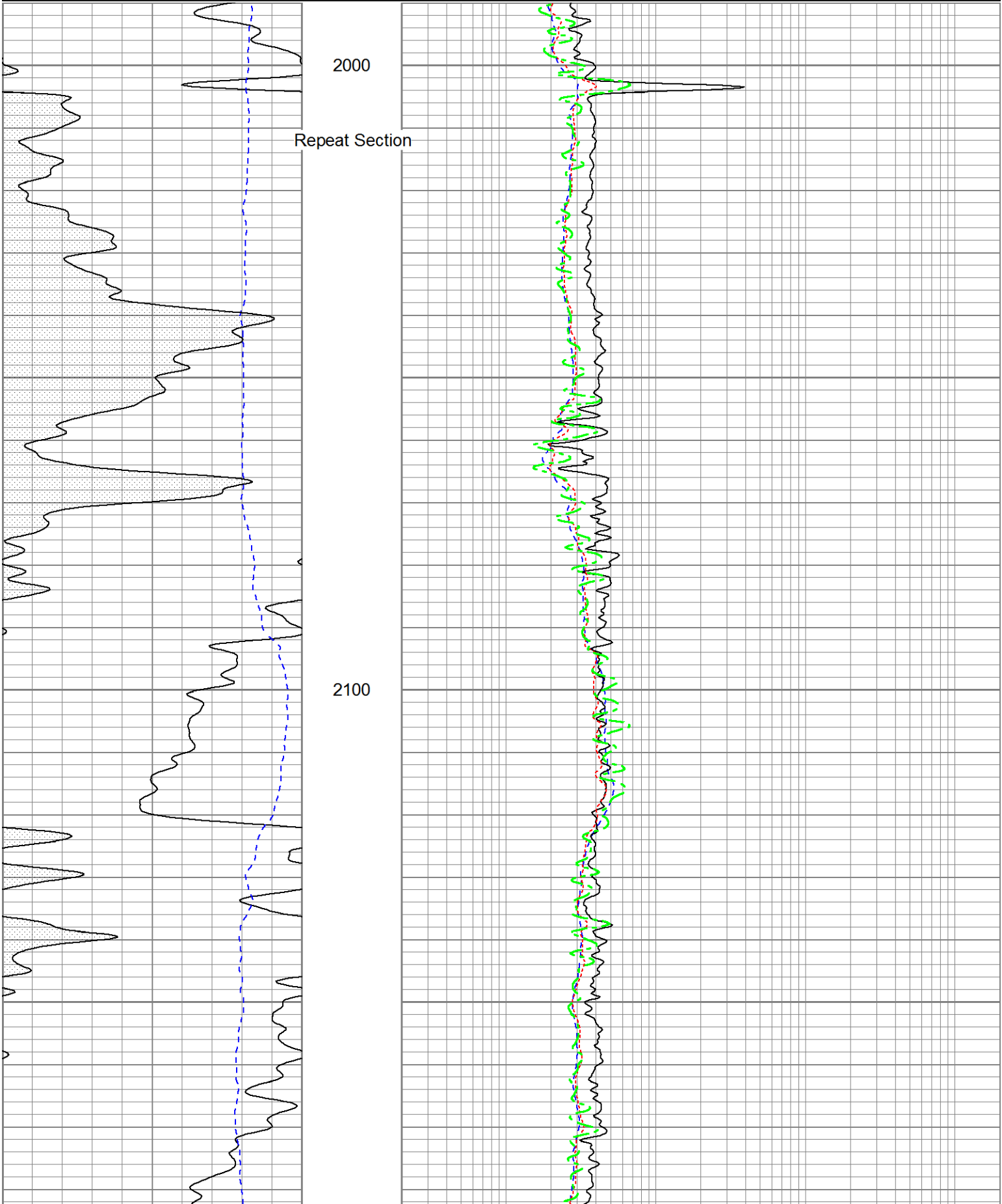
2100

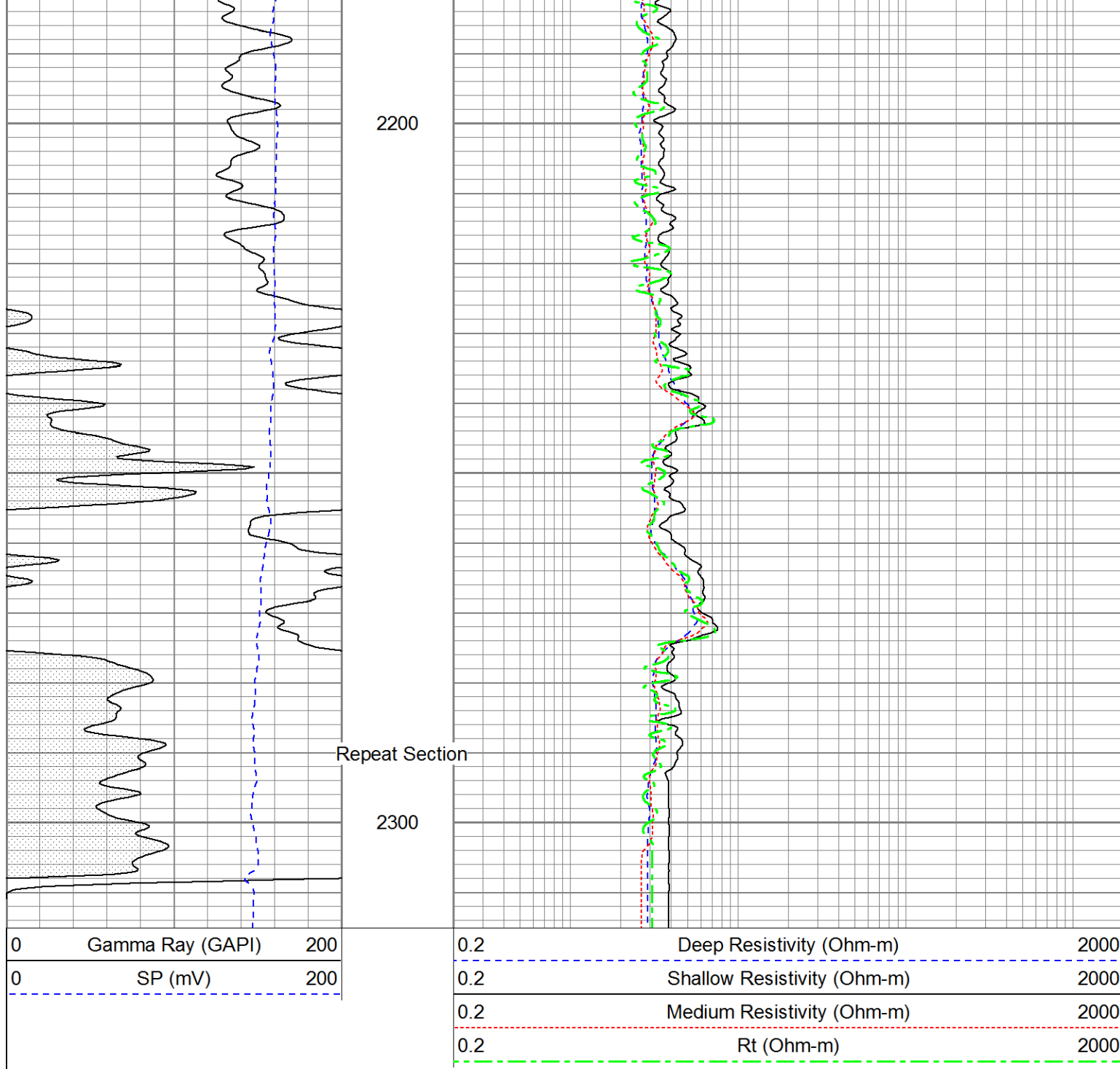




Database File: 13629.db
Dataset Pathname: pass2.1
Presentation Format: dil
Dataset Creation: Mon Jul 21 02:57:39 2014 by Calc 0

0	Gamma Ray (GAPI)	200	0.2	Deep Resistivity (Ohm-m)	2000
0	SP (mV)	200	0.2	Shallow Resistivity (Ohm-m)	2000
			0.2	Medium Resistivity (Ohm-m)	2000
			0.2	Rt (Ohm-m)	2000





Calibration Report							
Database File:	13629.db						
Dataset Pathname:	pass1						
Dataset Creation:	Mon Jul 21 02:03:05 2014 by Log 0						
Dual Induction Calibration Report							
Serial-Model:		1039-PSI					
Surface Cal Performed:							
Readings			References			Results	
Loop:	Air	Loop	Air	Loop		m	b
Deep	0.000	1.000	0.000	1.000	mmho/m	0.585	-45.000
Medium	0.000	1.000	0.000	1.000	mmho/m	0.470	-40.000

Compensated Density Calibration Report					
Serial-Model:			770-PSI		
Source / Verifier:			4400 / PSI		
Master Calibration Performed:			Mon Jul 21 02:13:30 2014		
Before Survey Verification Performed:					
After Survey Verification Performed:					

Master Calibration					
		Density		Far Detector	Near Detector
Magnesium		1.750	g/cc	6052.27	9575.17 cps
Aluminum		2.690	g/cc	1090.90	5872.16 cps
		Spine Angle = 74.07		Density/Spine Ratio = 0.528	
		Size		Reading	
Small Ring		4.50	in	1.80	
Large Ring		13.00	in	1.46	

Before Survey Verification					
		Target		Measured	
			g/cc		g/cc
			g/cc		g/cc
			g/cc		g/cc

After Survey Verification					
		Target		Measured	
			g/cc		g/cc
			g/cc		g/cc
			g/cc		g/cc

Compensated Neutron Calibration Report					
Serial Number:			853		
Tool Model:			PSI		

CALIBRATION						
Detector		Readings		Target		Normalization
Short Space		1.00	cps	1.00	cps	1.9000
Long Space		1.00	cps	1.00	cps	2.0000

PRE-SURVEY VERIFICATION						
Detector		Readings		Measured		Target
1)	Short Space		cps			
	Long Space		cps	pu		pu
2)	Short Space		cps			
	Long Space		cps	pu		
3)	Short Space		cps			
	Long Space		cps	pu		

POST-SURVEY VERIFICATION						
Detector		Readings		Measured		Target
1)	Short Space		cps			

	Long Space	cps	pu	pu
2)	Short Space	cps		
	Long Space	cps	pu	pu
3)	Short Space	cps		
	Long Space	cps	pu	pu

Gamma Ray Calibration Report				
------------------------------	--	--	--	--

Serial Number:	223		
Tool Model:	PSI		
Performed:	Mon Jul 21 02:13:45 2014		
Calibrator Value:	253.0	GAPI	
Background Reading:	30.0	cps	
Calibrator Reading:	380.0	cps	
Sensitivity:	0.6300	GAPI/cps	