



GAMMA RAY CCL CEMENT BOND VDL

Pioneer Energy Services

Company AUGUSTUS ENERGY RESOURCES, LLC
Well HAYS 31-03 2S44W
Field VERNON
County YUMA State COLORADO

Location: 710' FNL & 146' FEL
NWNE

API # : 0512512088

Other Services

SEC 3 TWP 2S RGE 44W

Permanent Datum GL Elevation 3803
Log Measured From KB
Drilling Measured From KB

Elevation
K.B. 3809
D.F. 3808
G.L. 3803

Date 28-JUL-2014

Run Number	ONE		
Depth Driller	2324'		
Depth Logger	2262'		
Bottom Logged Interval	2262'		
Top Log Interval	SURFACE		
Open Hole Size	6.25"		
Type Fluid	WATER		
Density / Viscosity	8.33 PPG		
Max. Recorded Temp.	128°F		
Estimated Cement Top	SURFACE		
Time Well Ready	PM		
Time Logger on Bottom	15:30		
Equipment Number	75		
Location	FORT MORGAN		
Recorded By	LEROY HOBBS		
Witnessed By	GREG JONES		

Borehole Record				Tubing Record			
Run Number	Bit	From	To	Size	Weight	From	To

Casing Record	Size	Wgt/Ft	Top	Bottom
Surface String				
Prot. String				
Production String	4-1/2"	11.6#	SURFACE	2324'
Liner				

<<< Fold Here >>>

All interpretations are opinions based on inferences from electrical or other measurements and we cannot and do not guarantee the accuracy or correctness of any interpretation, and we shall not, except in the case of gross or willful negligence on our part, be liable or responsible for any loss, costs, damages, or expenses incurred or sustained by anyone resulting from any interpretation made by any of our officers, agents or employees. These interpretations are also subject to our general terms and conditions set out in our current Price Schedule.

Comments

LOG WAS CORRECTED TO PIONEER COMPENSATED NEUTRON LOG
DATED JULY 19, 2014.

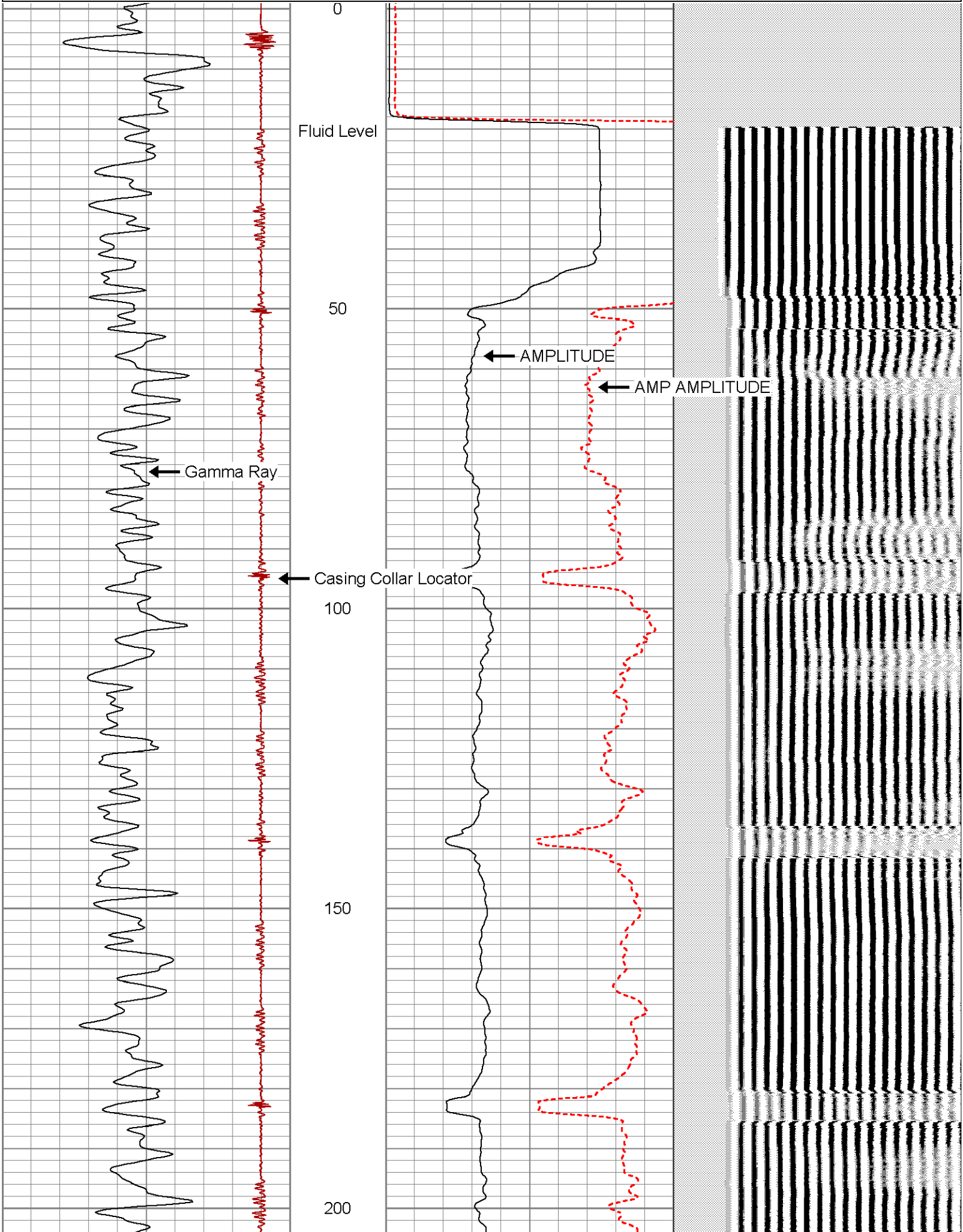
Database File: hays 31-03 2s44w.db
Dataset Pathname: pass1
Presentation Format: cbl_drs
Dataset Creation: Mon Jul 28 15:46:25 2014 by Log 7.0 B1
Charted by: Depth in Feet scaled 1:240

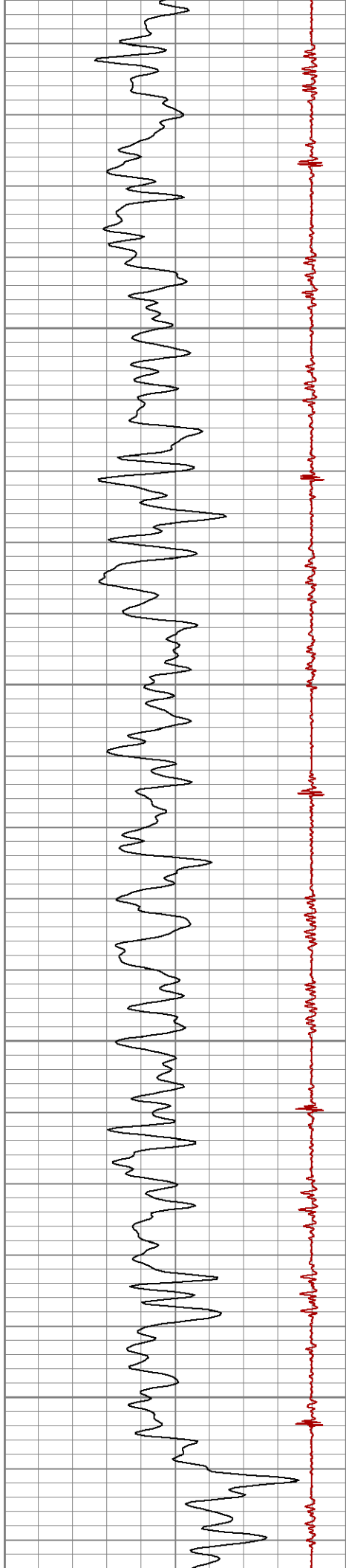
9	Collar Locator	-1
0	Gamma Ray (GAPI)	200

0	AMP AMPLITUDE (mV)	40	200
0	AMPLITUDE (mV)	100	

VDL

1200



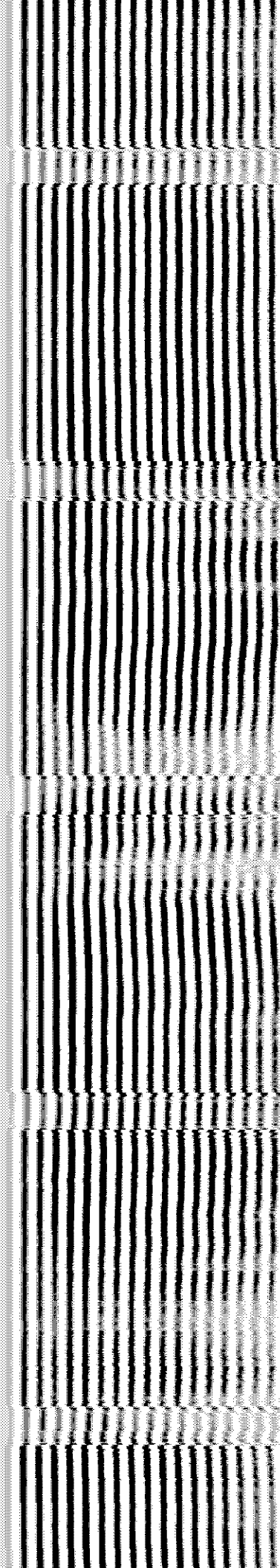
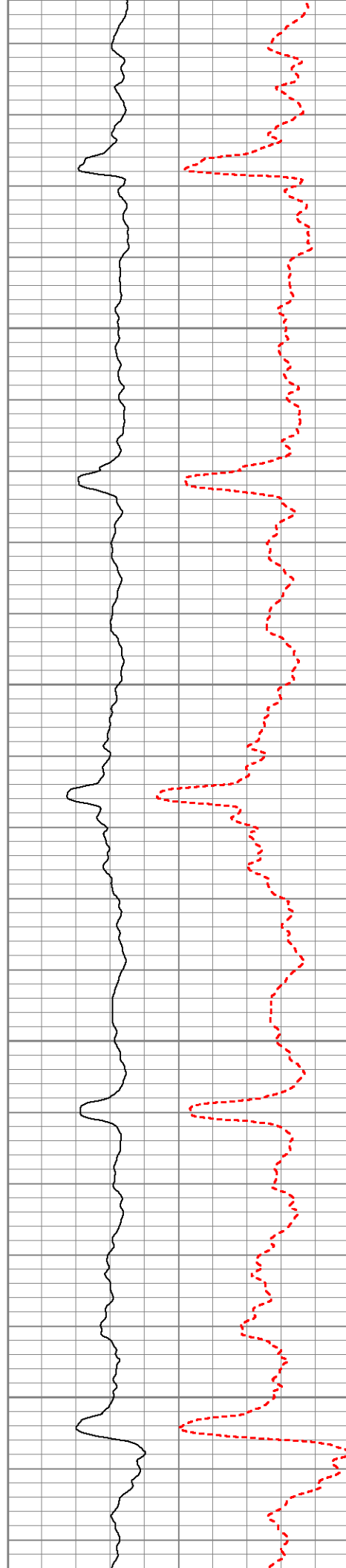


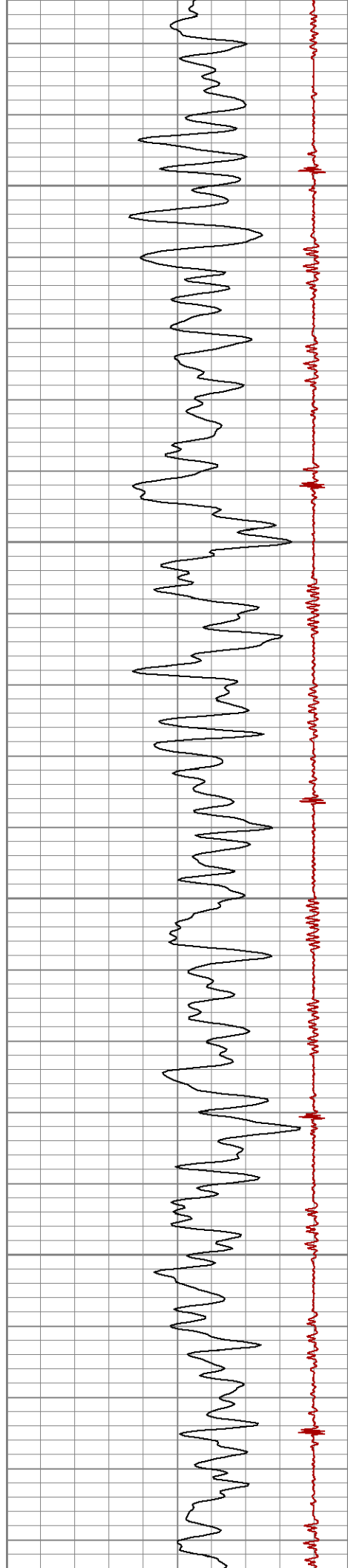
250

300

350

400



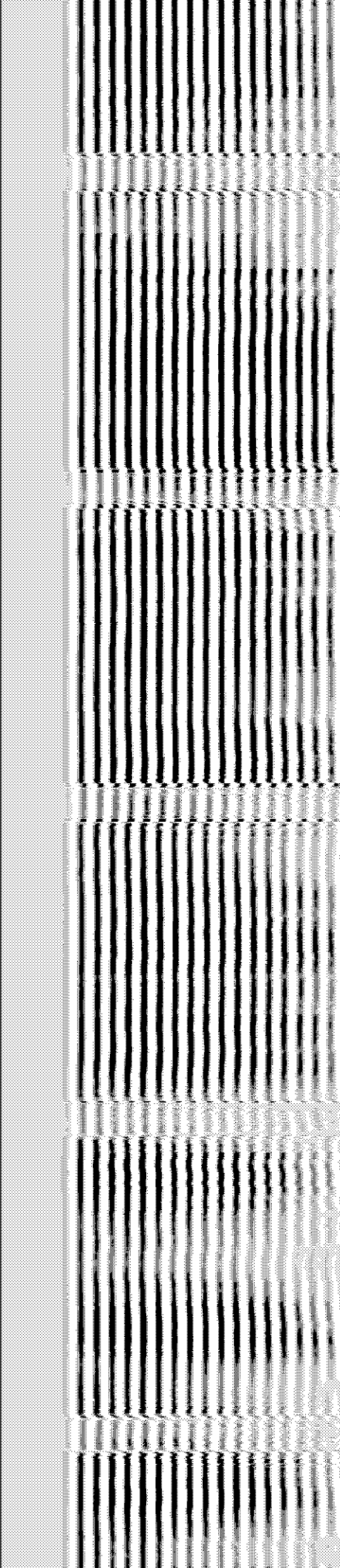
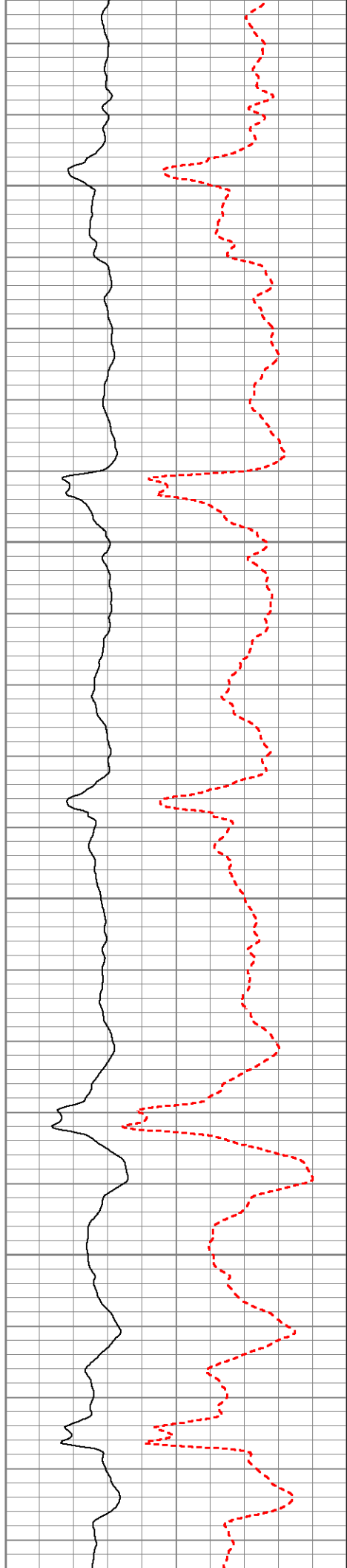


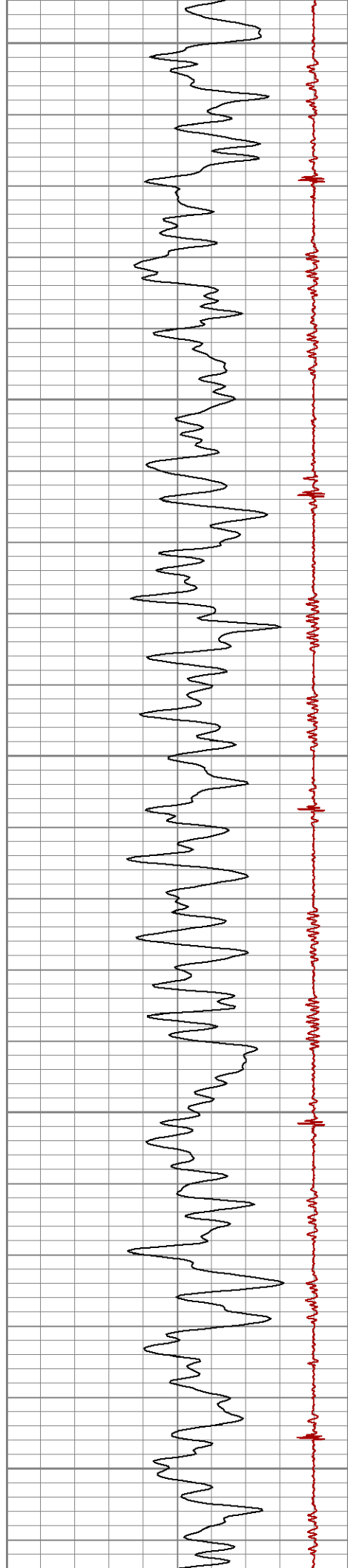
450

500

550

600





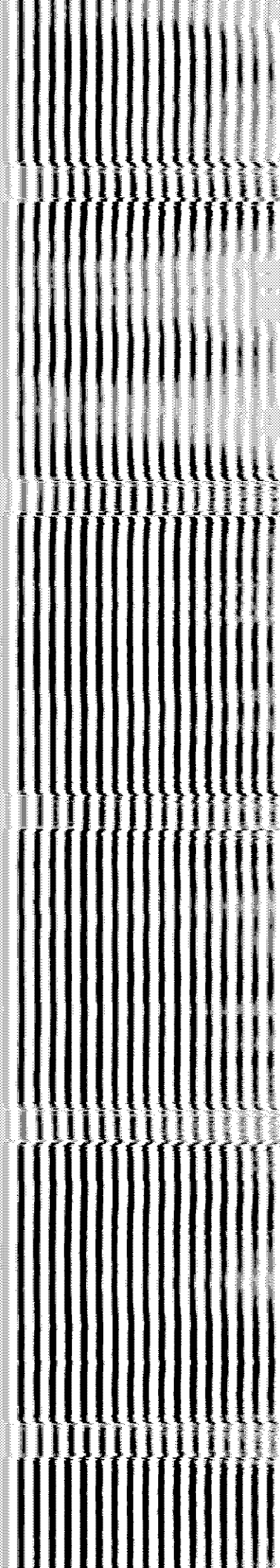
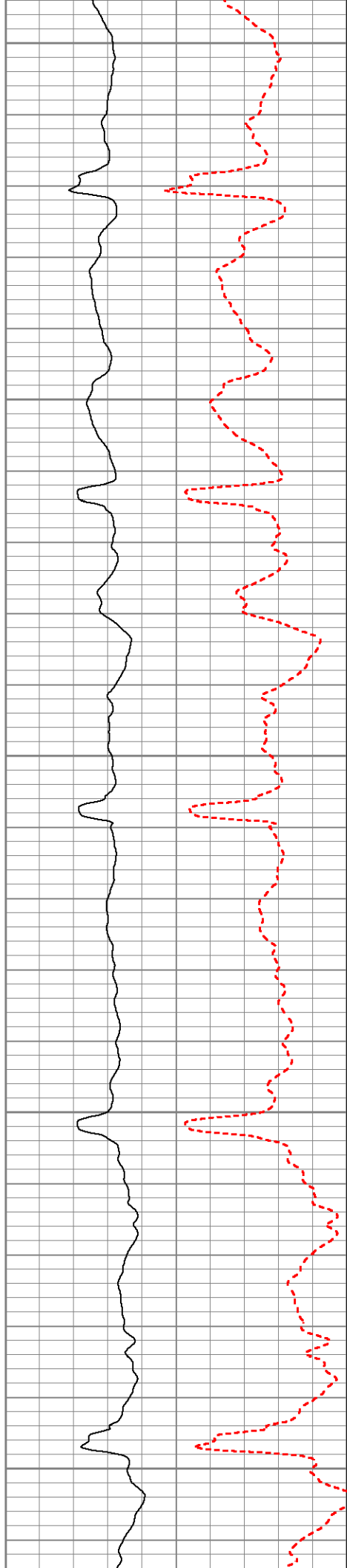
650

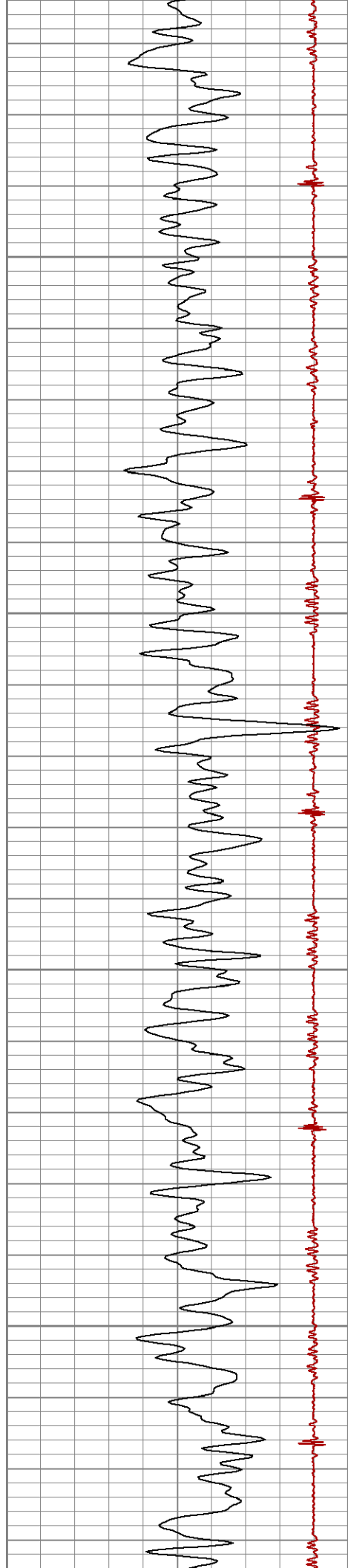
700

750

800

850



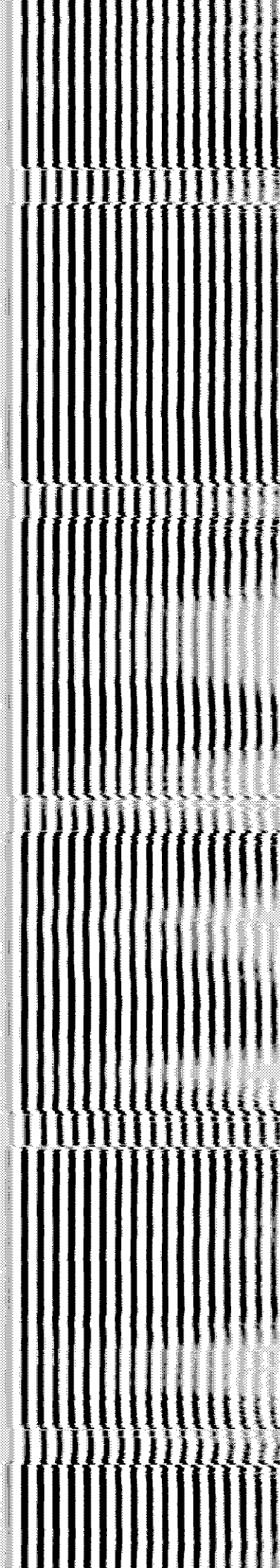
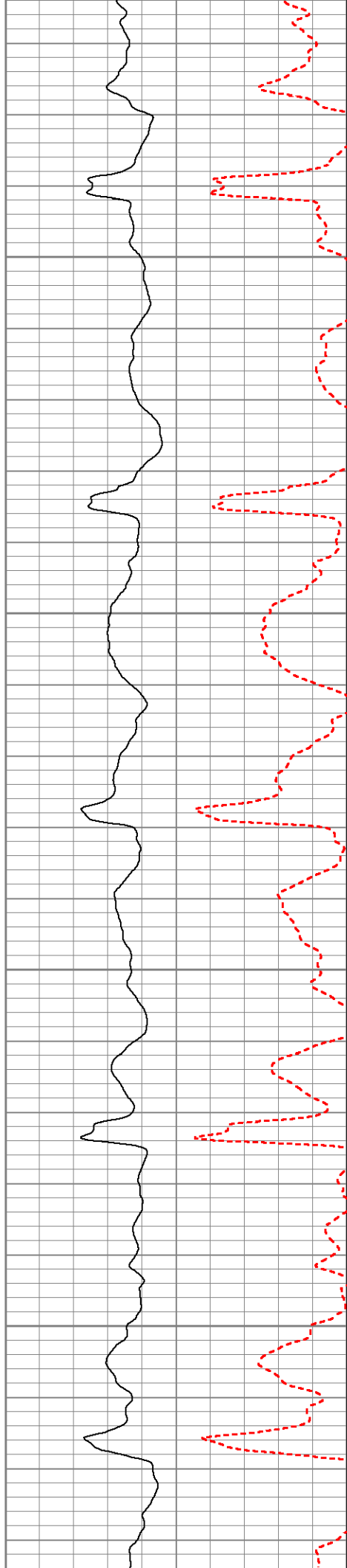


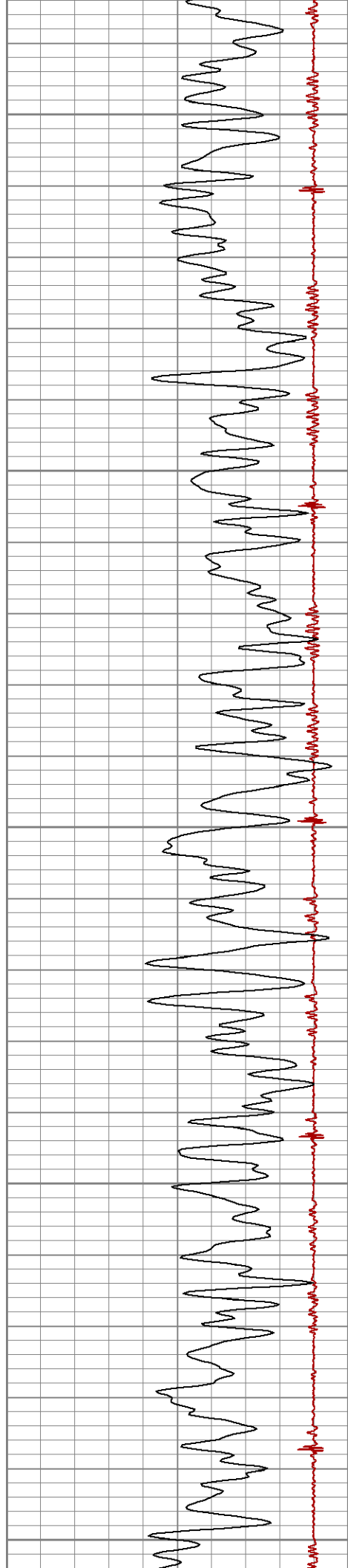
900

950

1000

1050





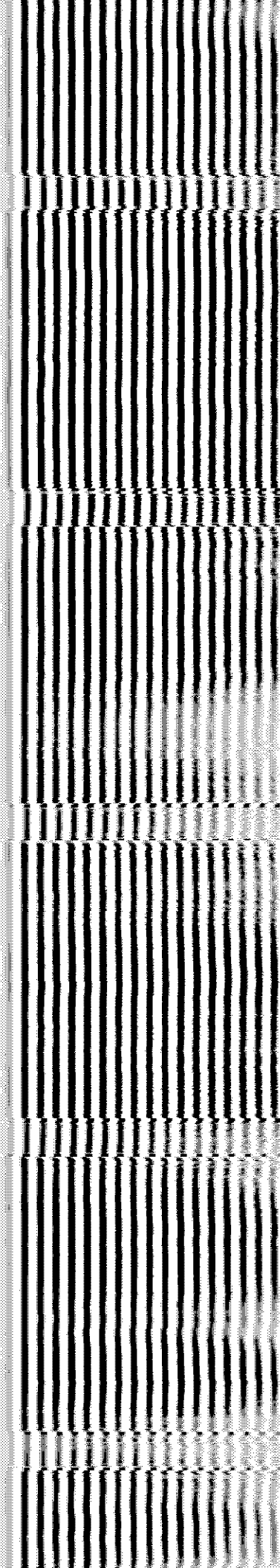
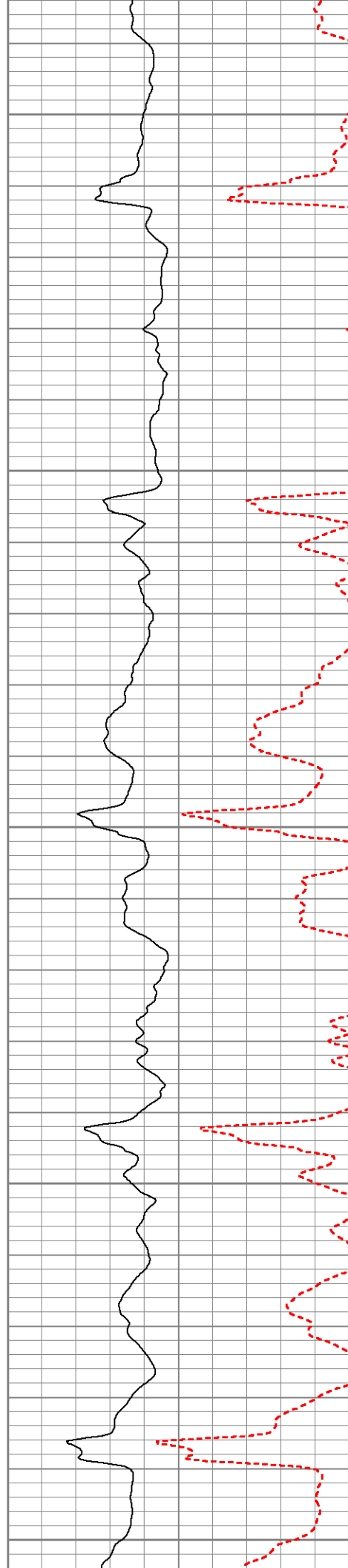
1100

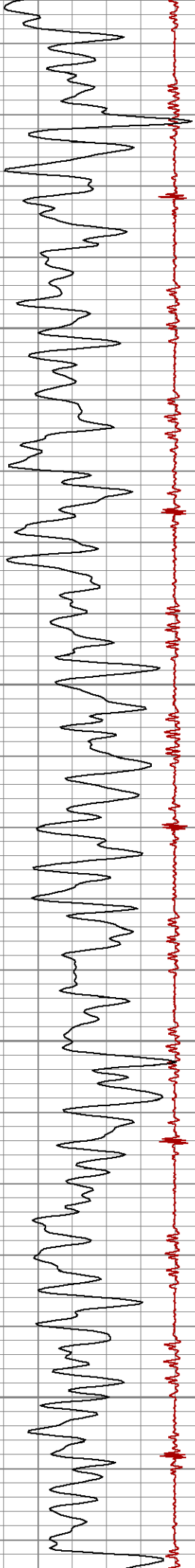
1150

1200

1250

1300



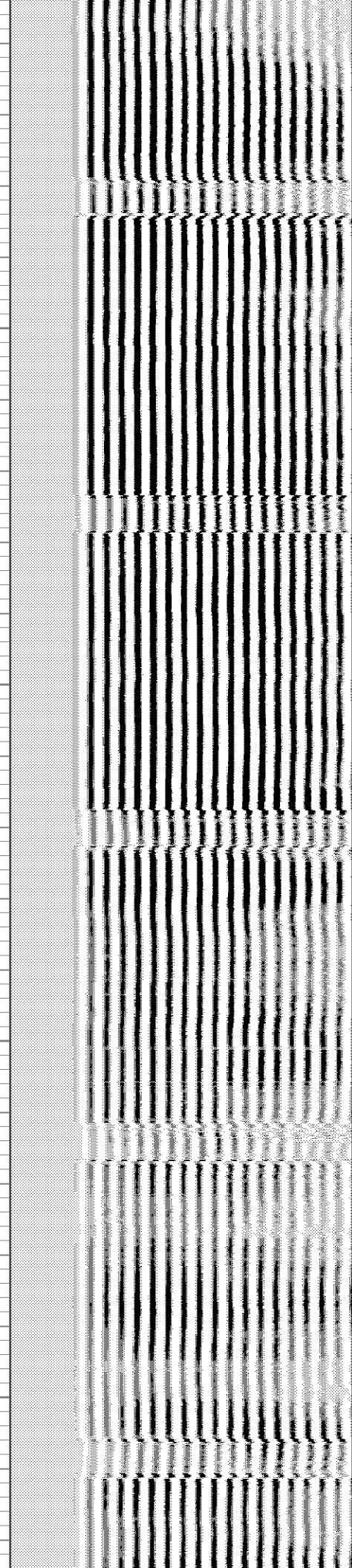
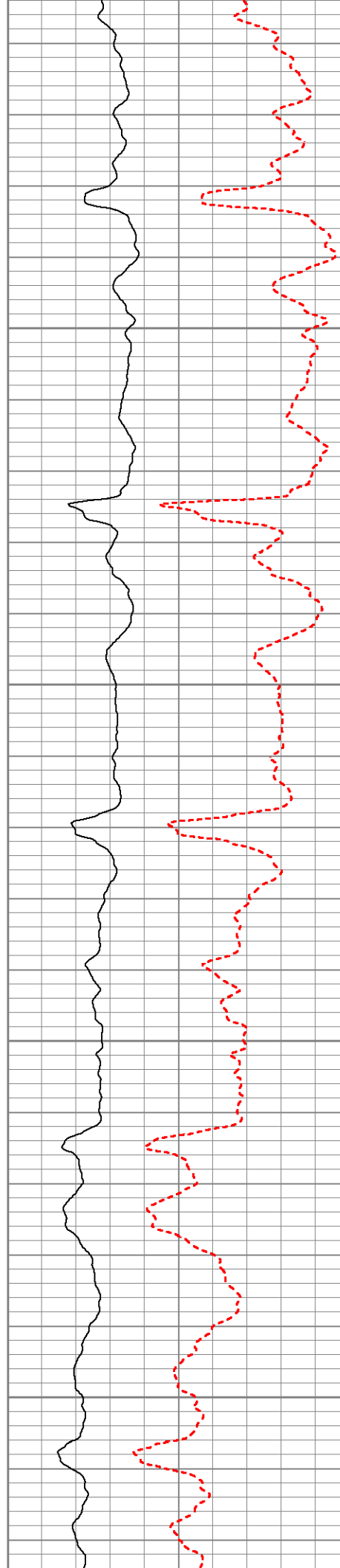


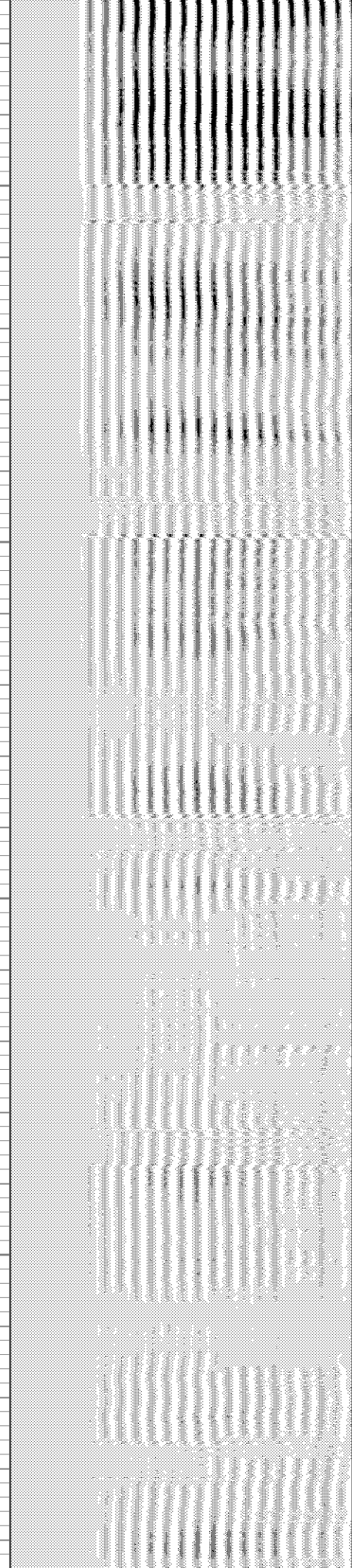
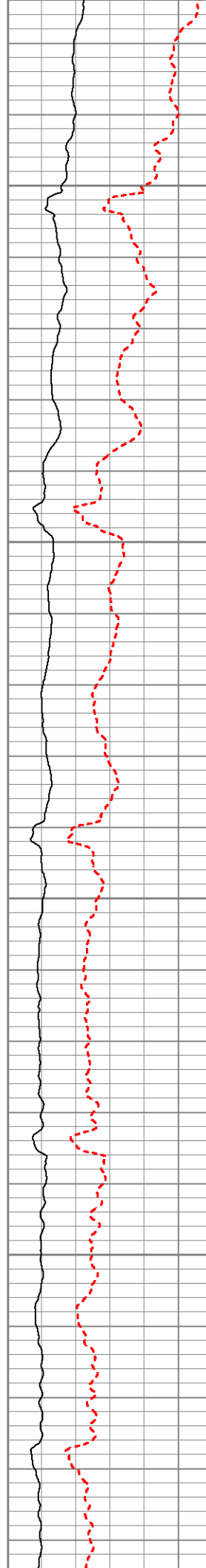
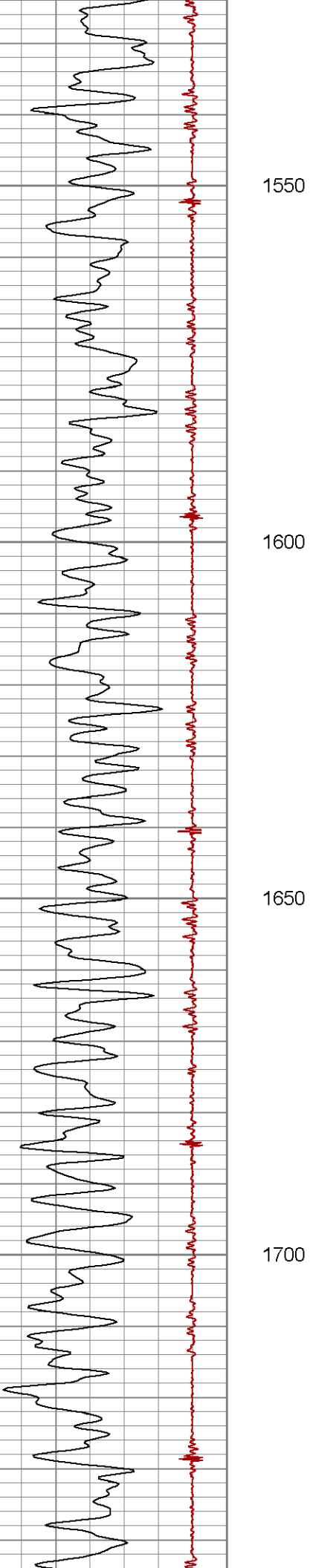
1350

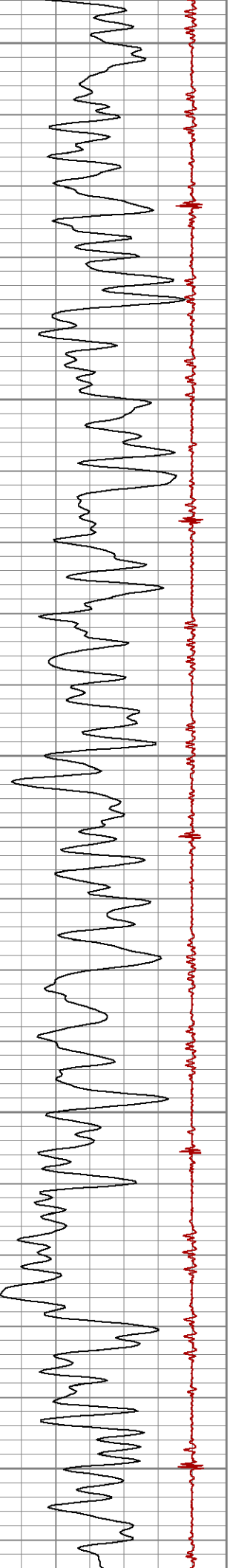
1400

1450

1500







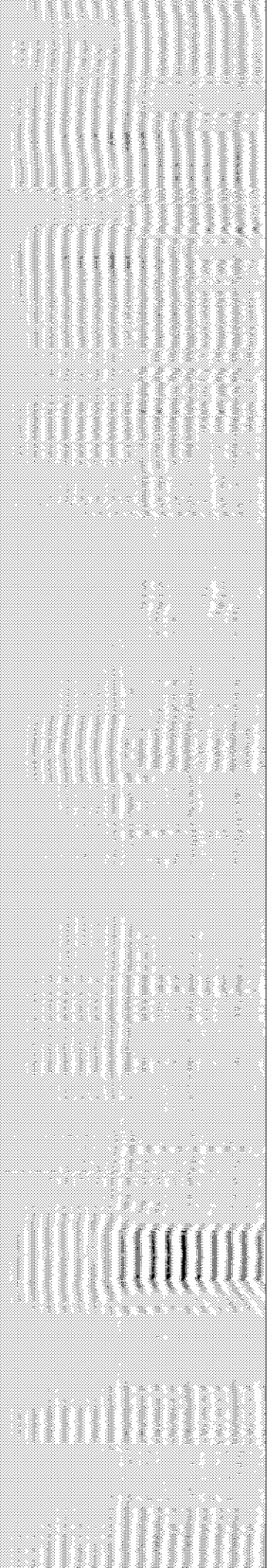
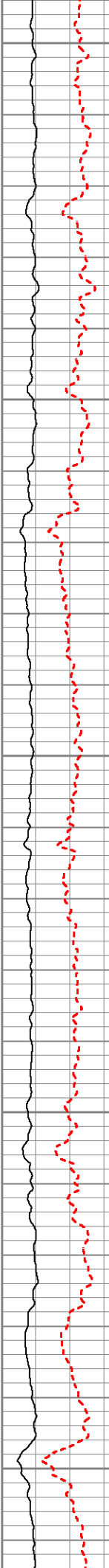
1750

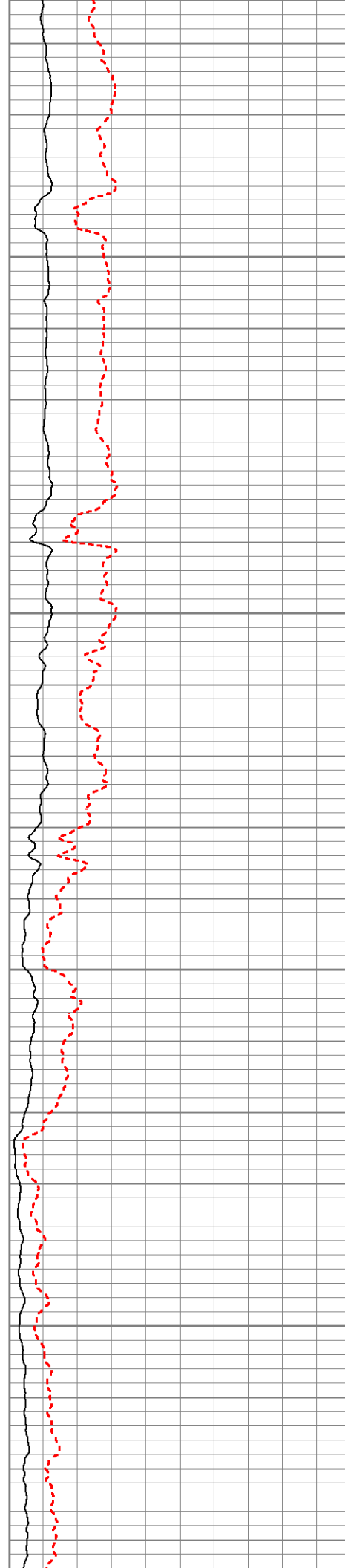
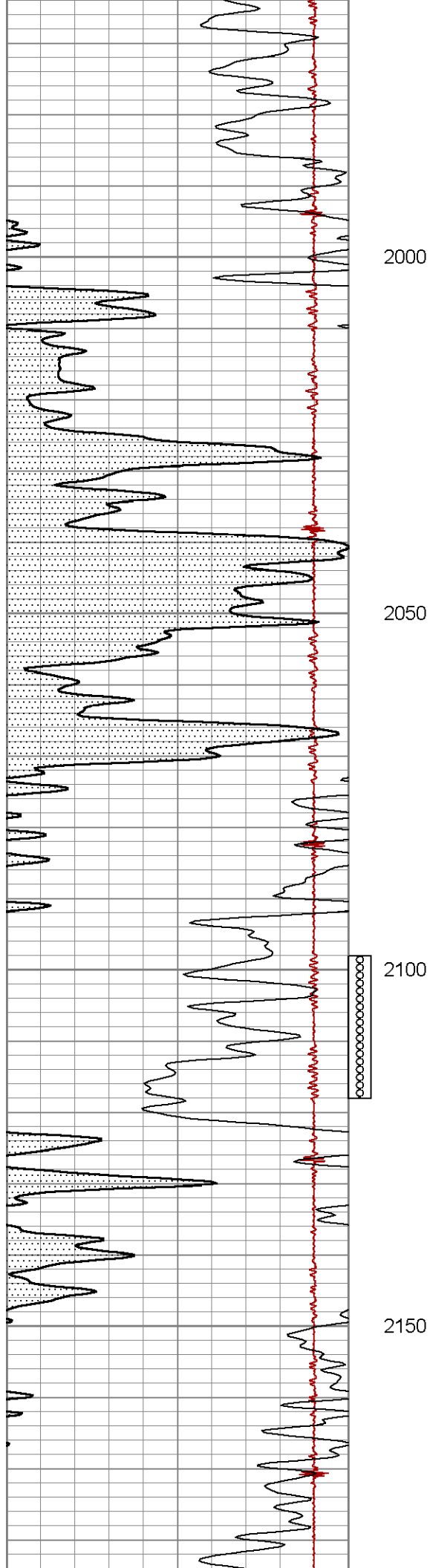
1800

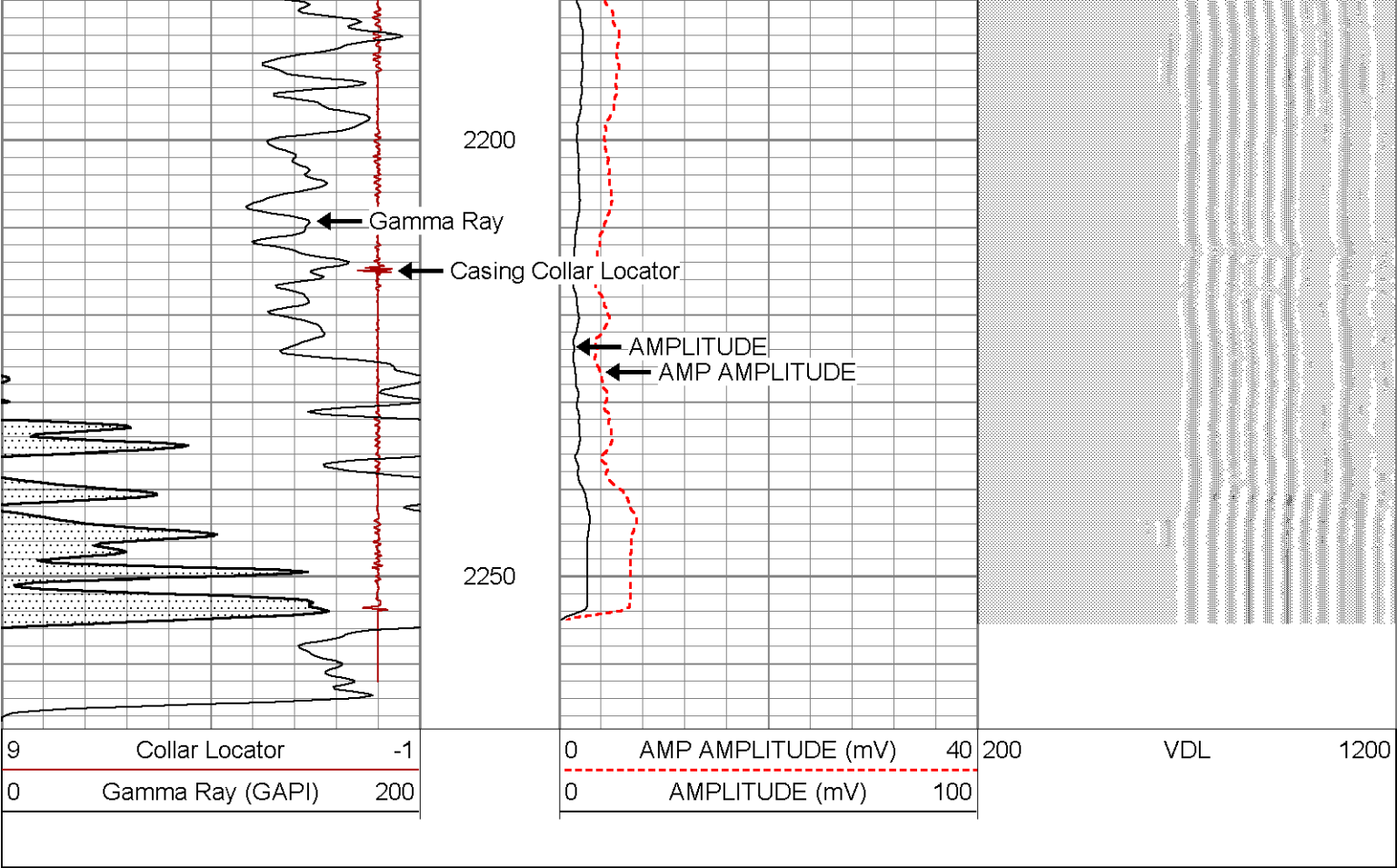
1850

1900

1950







Sensor	Offset (ft)	Schematic	Description	Len (ft)	OD (in)	Wt (lb)
			PTS275	2.83	2.75	
			RBT-Probe (Base) Probe Radii Bond Tool with Digital Telemetry	8.92	2.75	90.00
WVF3FT	12.96					
WVFCAL	12.96					
WVFS1	12.96					
WVFS2	12.96					
WVFS3	12.96					
WVFS4	12.96					
WVFS5	12.96					
WVFS6	12.96					
WVFS7	12.96					
WVFS8	12.96					

