



Pioneer Energy Services

GAMMA RAY CCL CEMENT BOND VDL

| | | | |
|------------------------|--|-----------|------------------------------------|
| Company | AUGUSTUS ENERGY RESOURCES, LLC | | |
| Well | HAYS 14-35 1S44W | | |
| Field | VERNON | | |
| County | YUMA | | |
| State | COLORADO | | |
| Location: | API # : 0512512091 312' FSL & 322' FWLL SWSW | | Other Services |
| Permanent Datum | SEC 35 | TWP 1S | RGE 44W |
| Log Measured From | GL | Elevation | 3819 |
| Drilling Measured From | KB | Elevation | KB: 3825 D.F. 3824 G.L. 3819 |

Date 28-JUL-2014

| | |
|------------------------|-------------|
| Run Number | ONE |
| Depth Driller | 2325' |
| Depth Logger | 2265' |
| Bottom Logged Interval | 2265' |
| Top Log Interval | SURFACE |
| Open Hole Size | 6.25" |
| Type Fluid | WATER |
| Density / Viscosity | 8.33 PPG |
| Max. Recorded Temp. | 125°F |
| Estimated Cement Top | SURFACE |
| Time Well Ready | PM |
| Time Logger on Bottom | 13:45 |
| Equipment Number | 75 |
| Location | FORT MORGAN |
| Recorded By | LEROY HOBBS |
| Witnessed By | GREG JONES |

| Borehole Record | | | | Tubing Record | | | |
|-------------------|--------|--------|---------|---------------|--------|------|----|
| Run Number | Bit | From | To | Size | Weight | From | To |
| | | | | | | | |
| | | | | | | | |
| | | | | | | | |
| Casing Record | Size | Wgt/Ft | Top | Bottom | | | |
| Surface String | | | | | | | |
| Prot. String | | | | | | | |
| Production String | 4-1/2" | 11.6# | SURFACE | 2325' | | | |
| Liner | | | | | | | |

<<< Fold Here >>>

All interpretations are opinions based on inferences from electrical or other measurements and we cannot and do not guarantee the accuracy or correctness of any interpretation, and we shall not, except in the case of gross or willful negligence on our part, be liable or responsible for any loss, costs, damages, or expenses incurred or sustained by anyone resulting from any interpretation made by any of our officers, agents or employees. These interpretations are also subject to our general terms and conditions set out in our current Price Schedule.

Comments

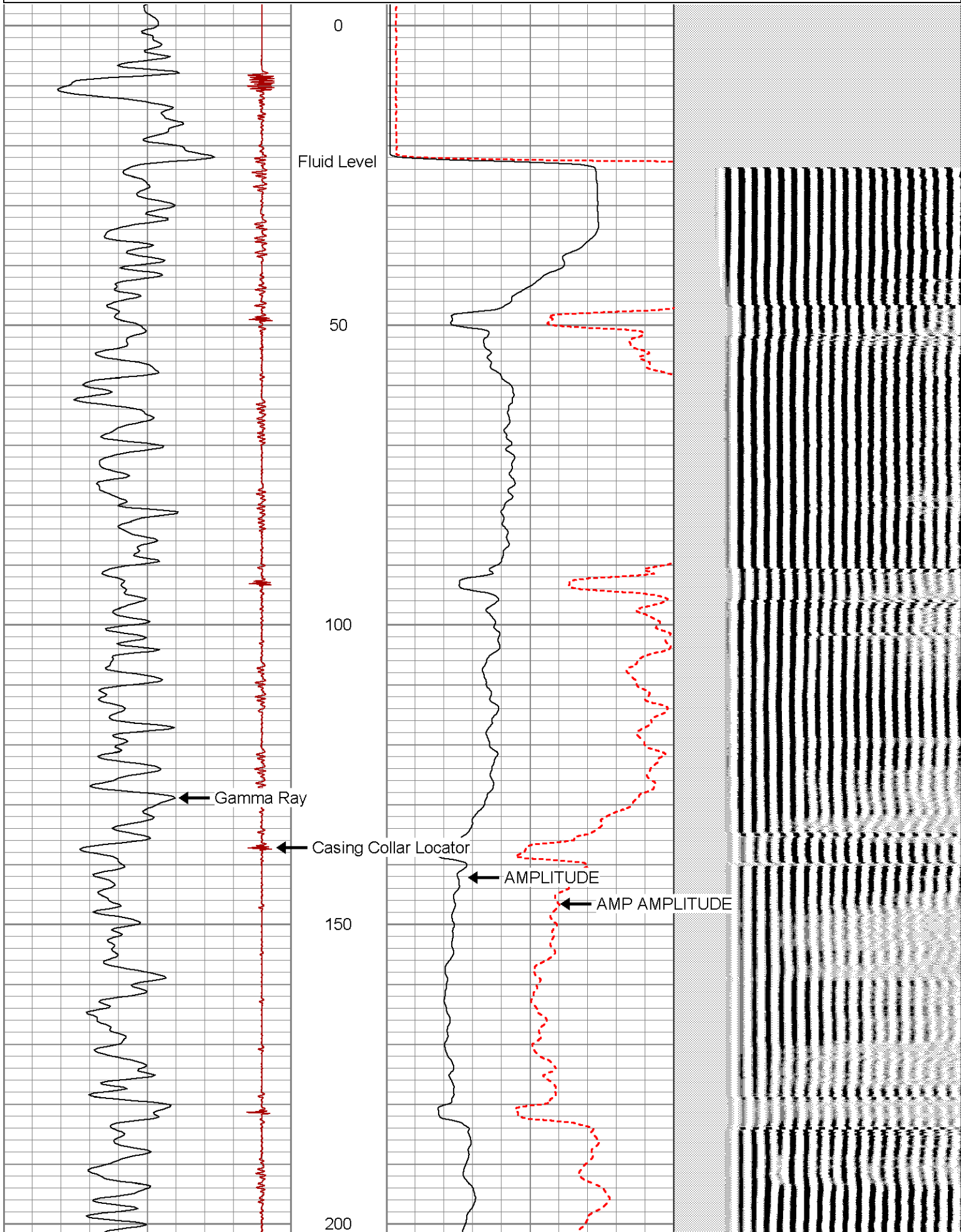
LOG WAS CORRECTED TO PIONEER COMPENSATED NEUTRON LOG
DATED JULY 19, 2014.

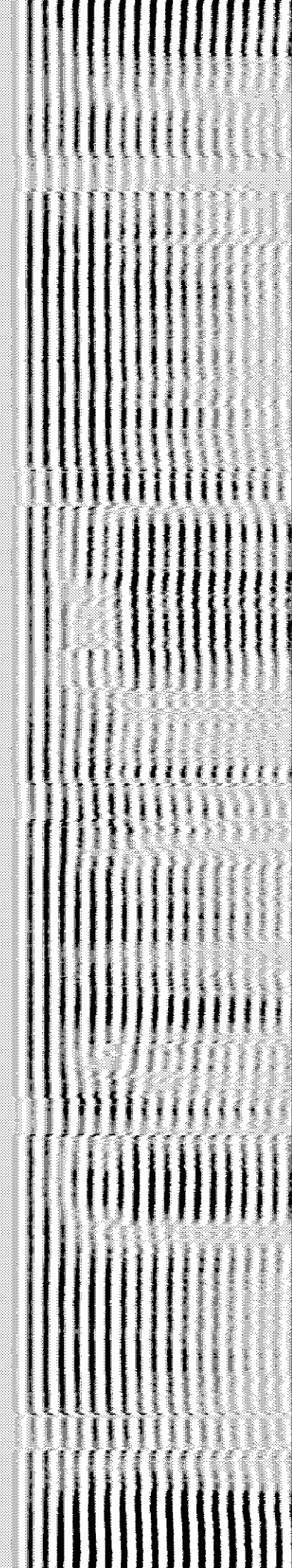
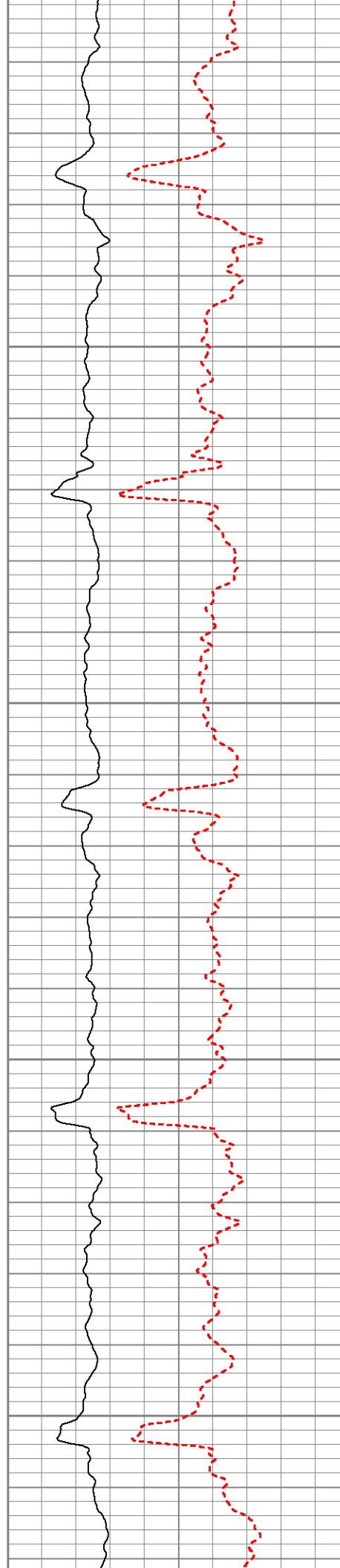
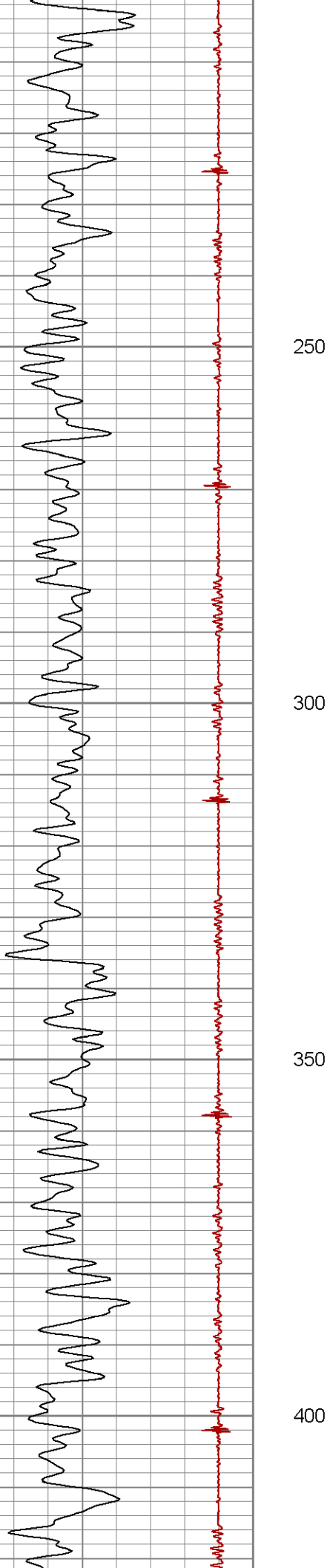
Database File: hays_14-35_1s44w.db
Dataset Pathname: pass1
Presentation Format: cbl_drs
Dataset Creation: Mon Jul 28 13:56:41 2014 by Log 7.0 B1
Charted by: Depth in Feet scaled 1:240

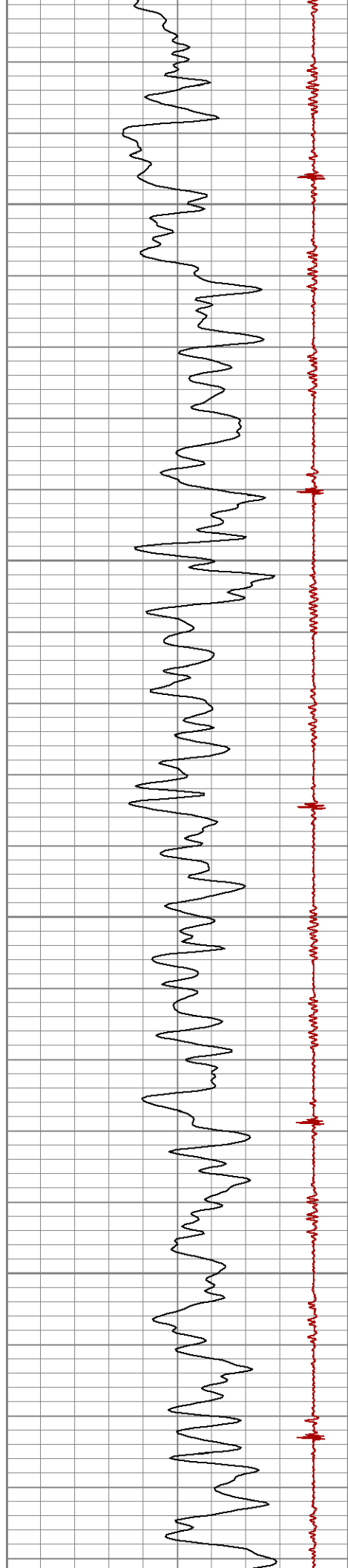
| | | |
|---|------------------|-----|
| 9 | Collar Locator | -1 |
| 0 | Gamma Ray (GAPI) | 200 |

| | | | |
|---|--------------------|-----|-----|
| 0 | AMP AMPLITUDE (mV) | 40 | 200 |
| 0 | AMPLITUDE (mV) | 100 | |

VDL 1200





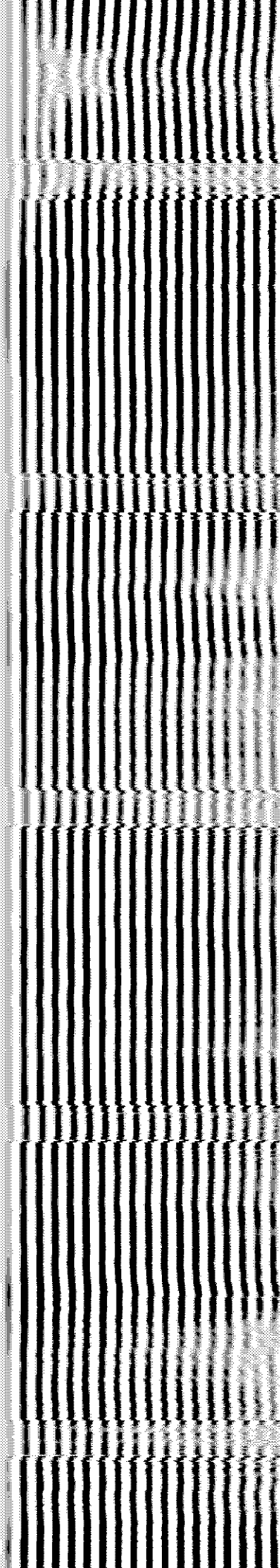


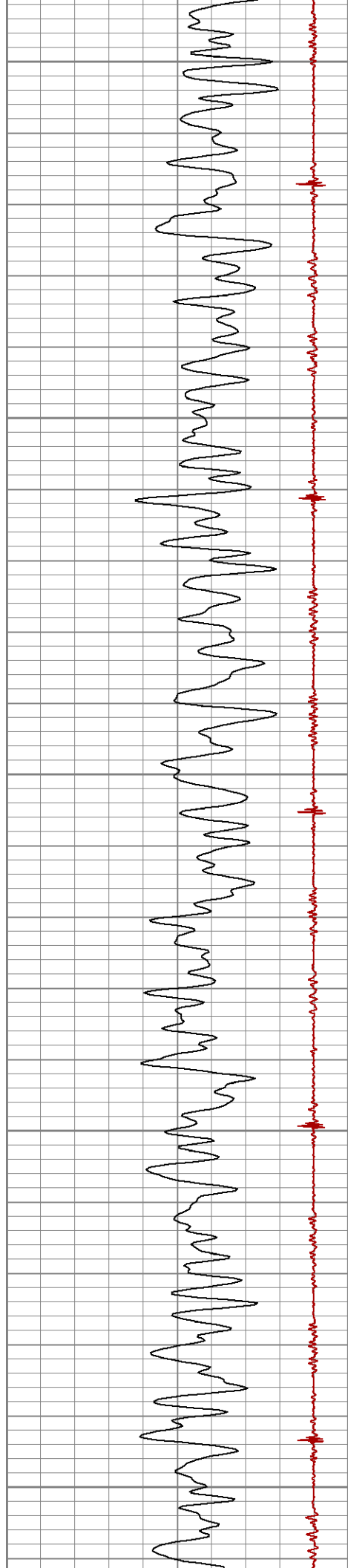
450

500

550

600





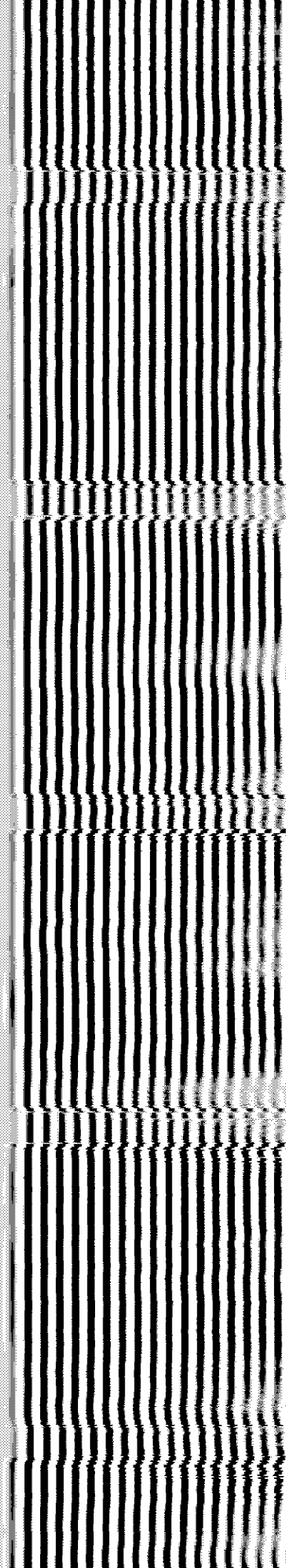
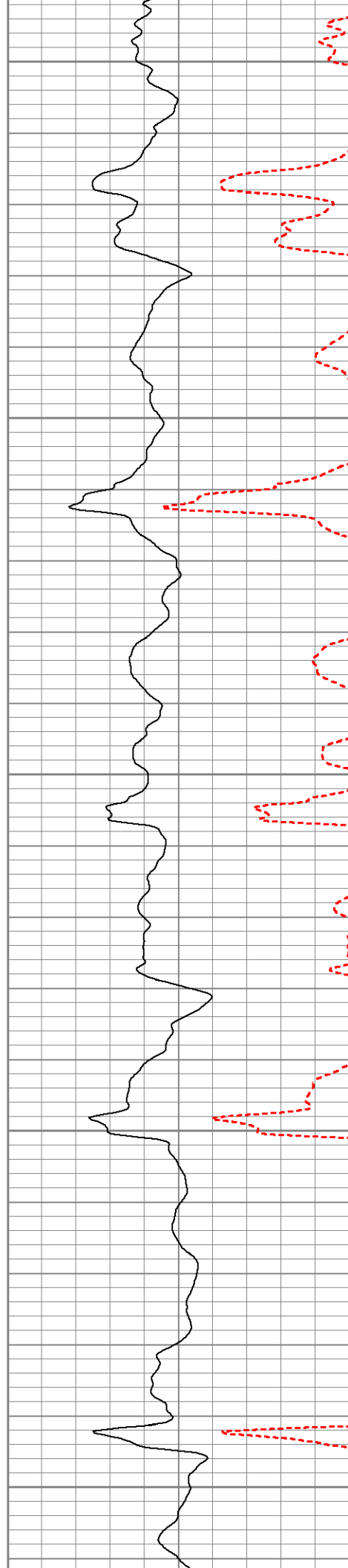
650

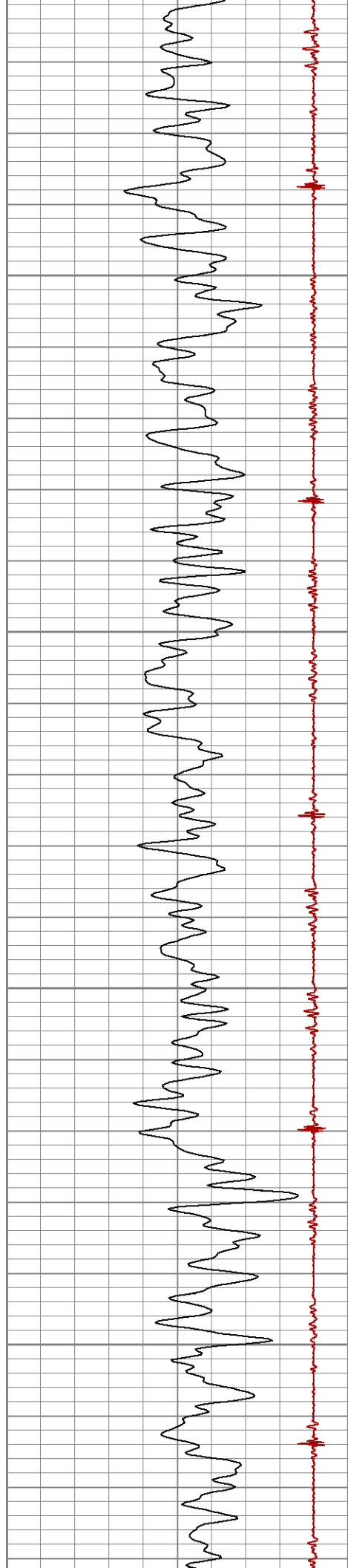
700

750

800

850



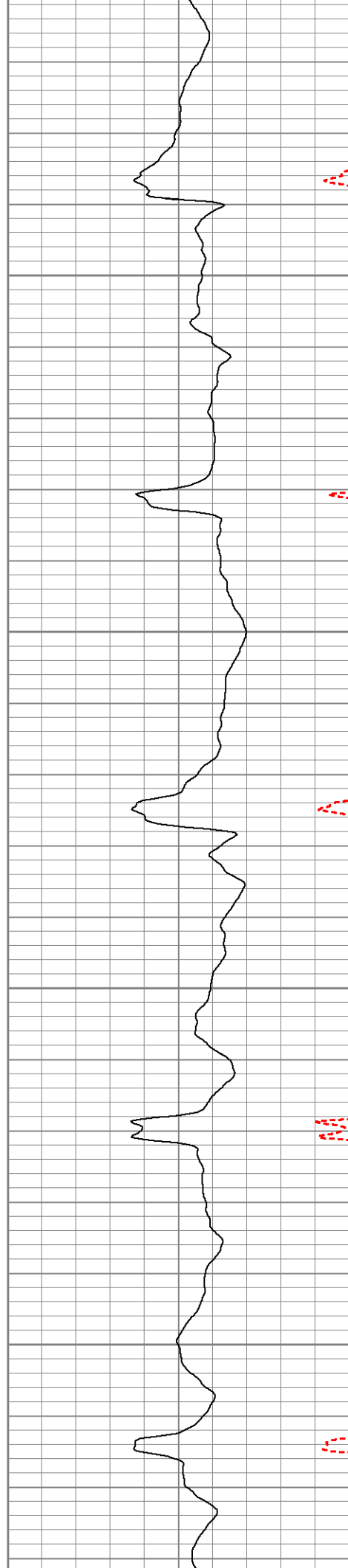


900

950

1000

1050

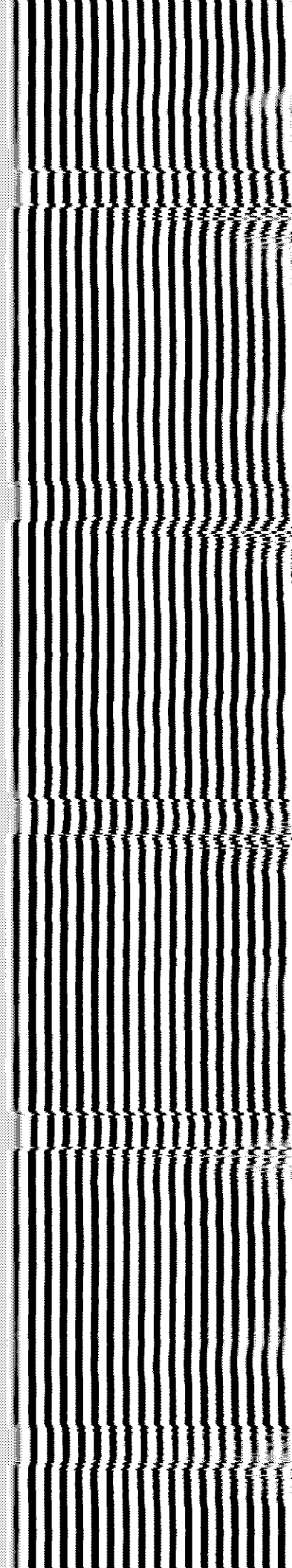


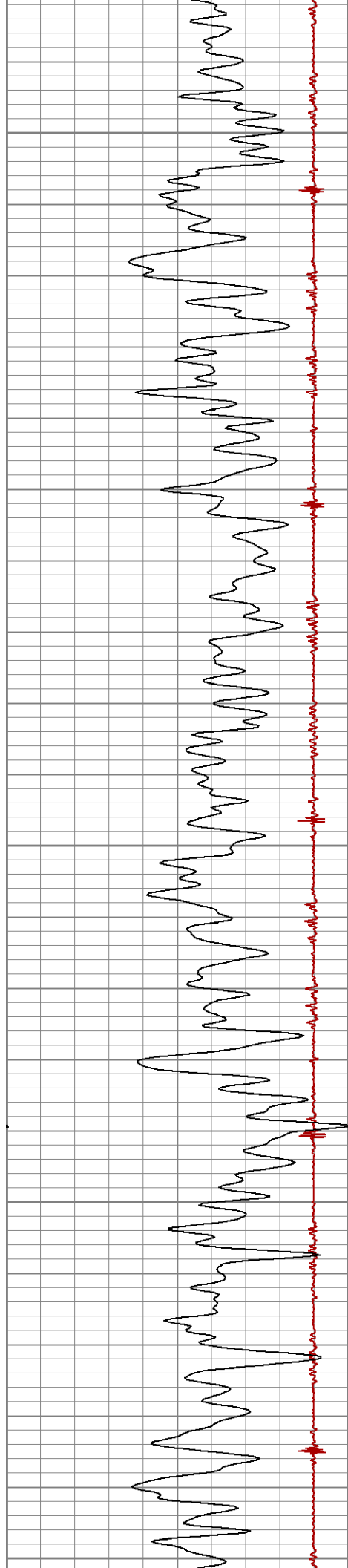
900

950

1000

1050





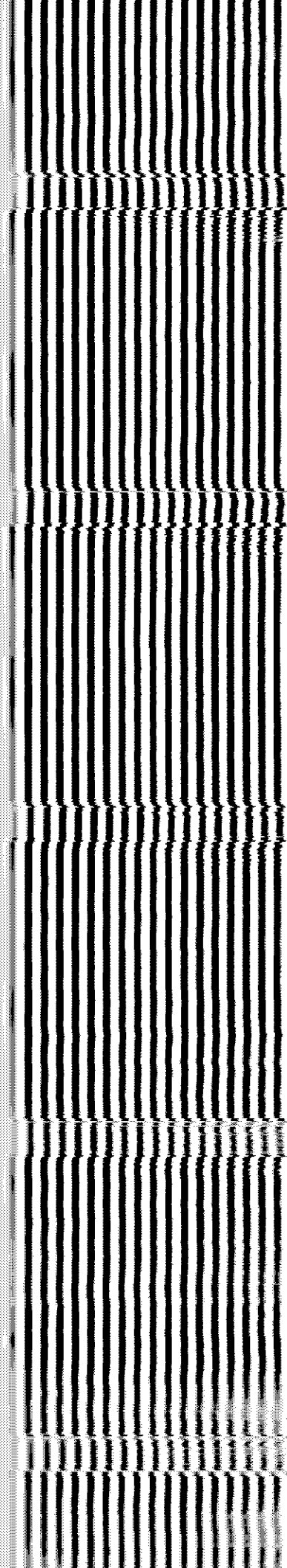
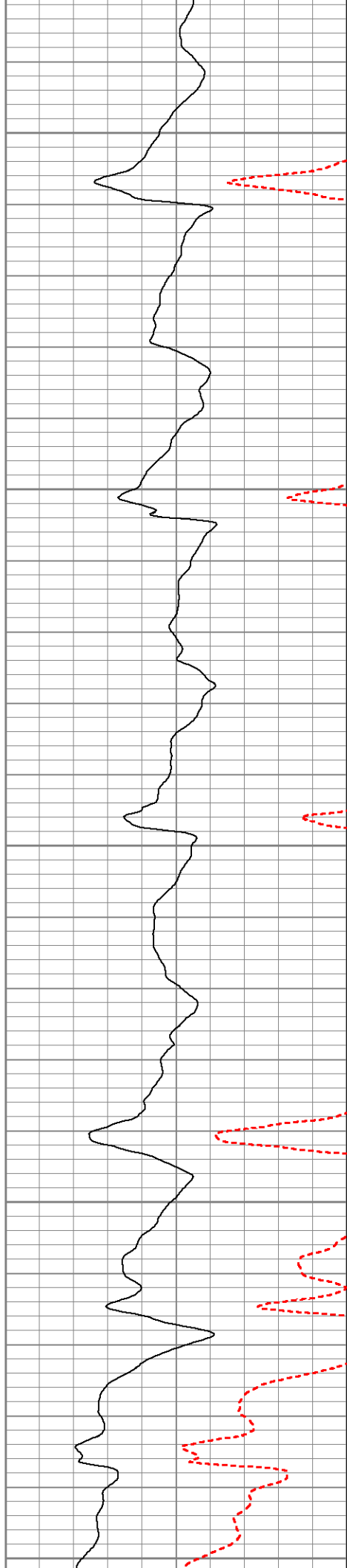
1100

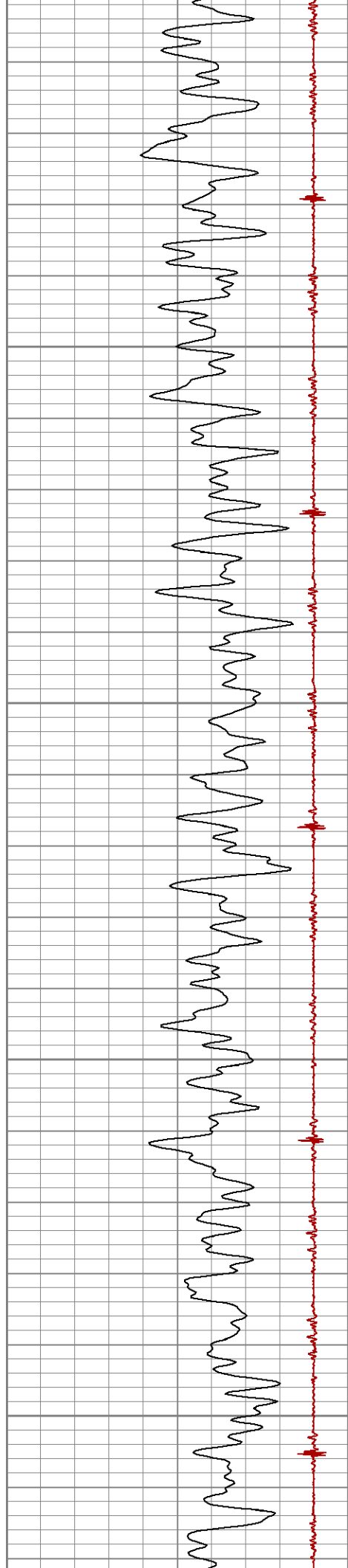
1150

1200

1250

1300



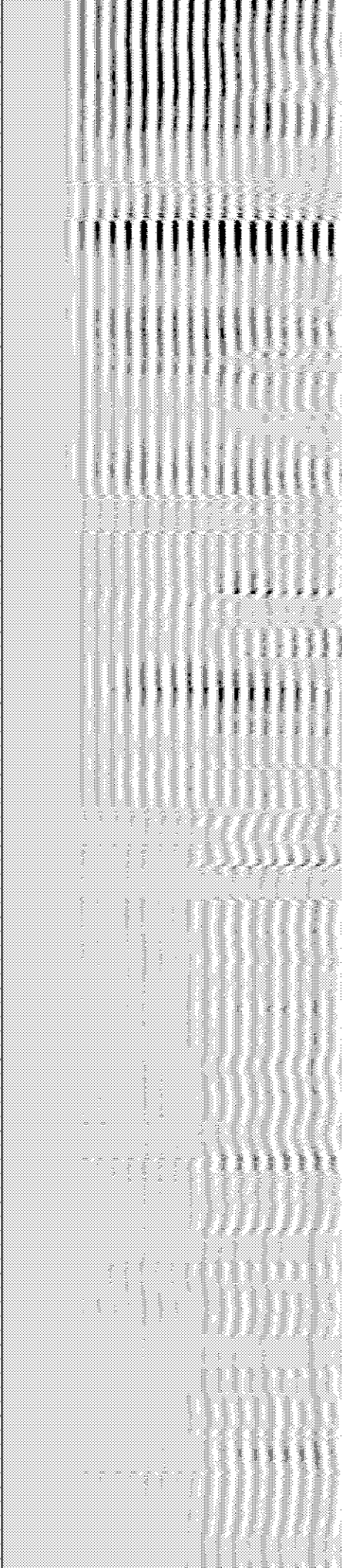
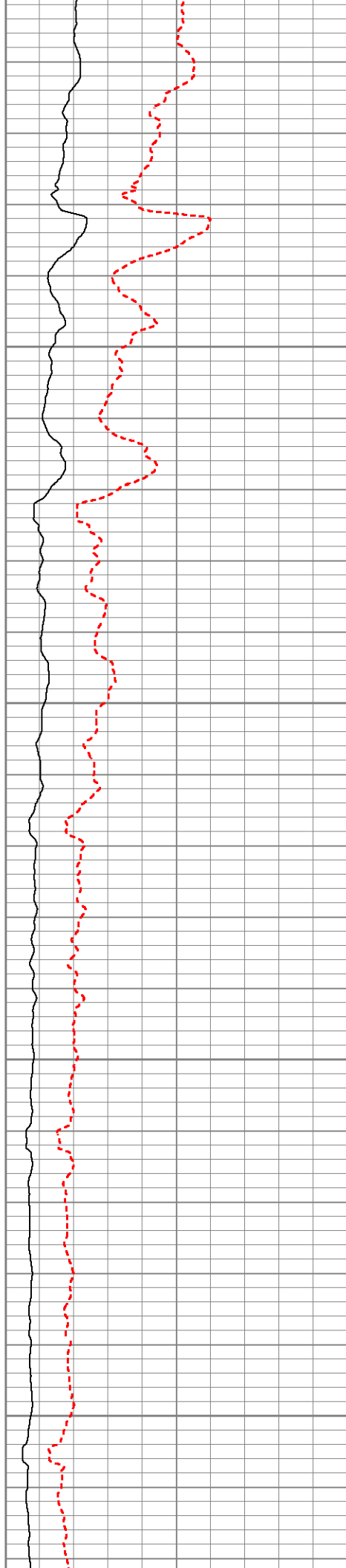


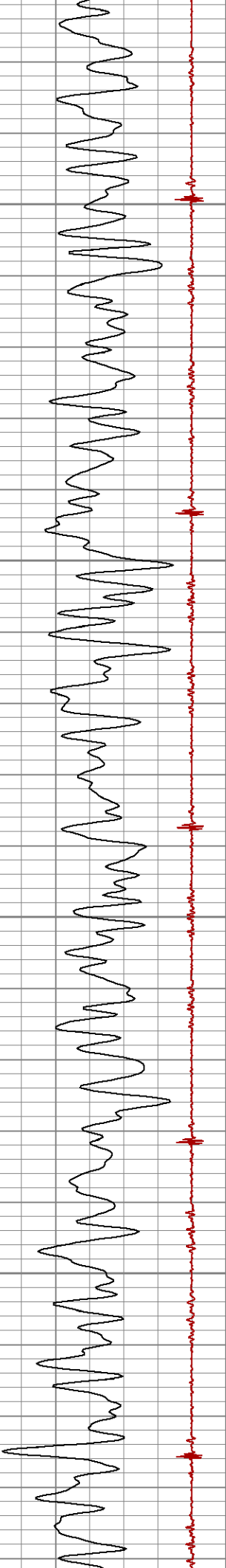
1350

1400

1450

1500



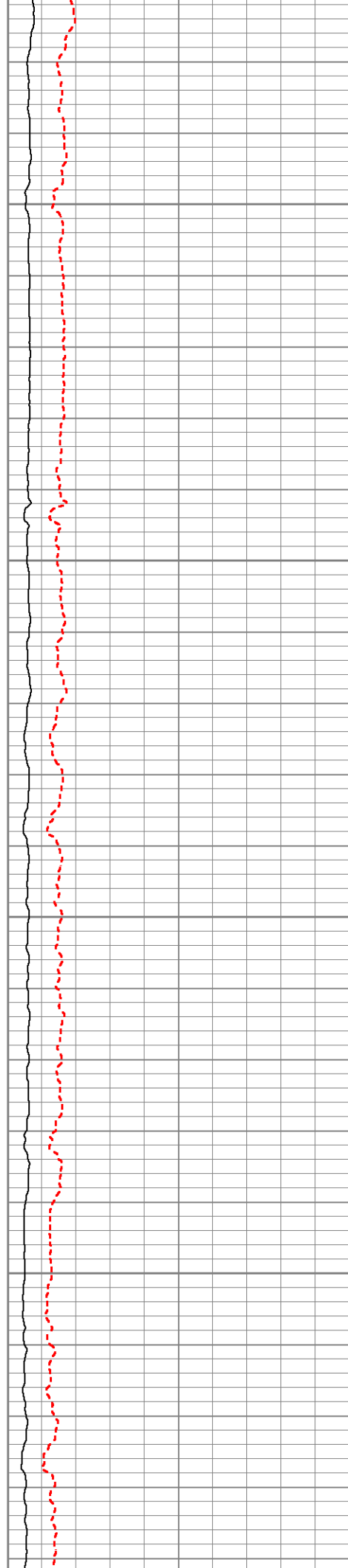


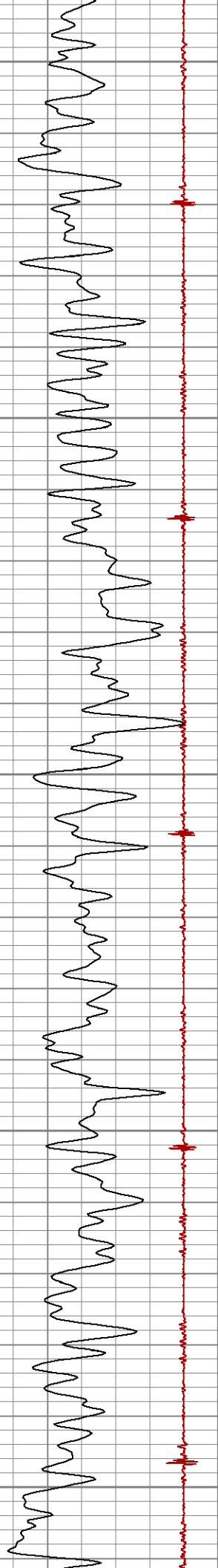
1550

1600

1650

1700





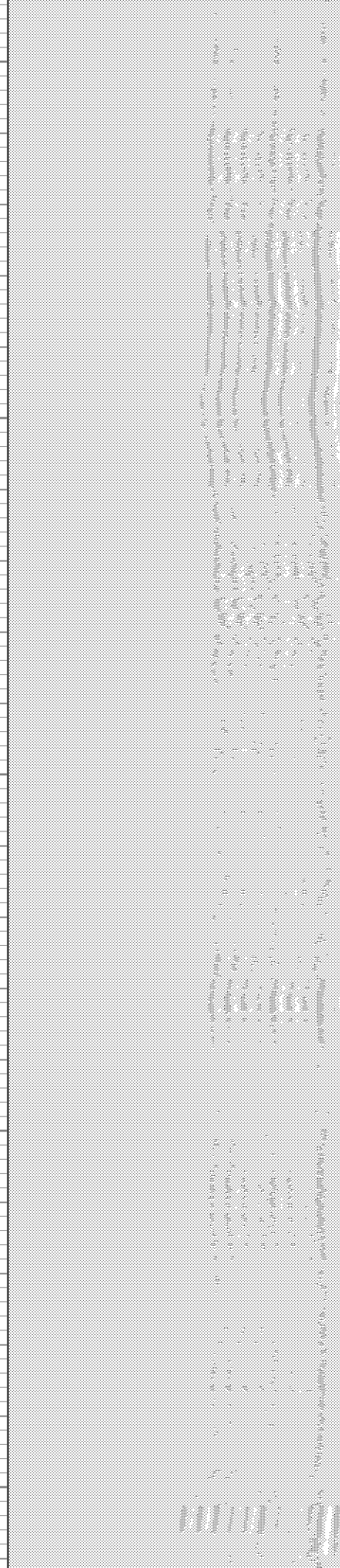
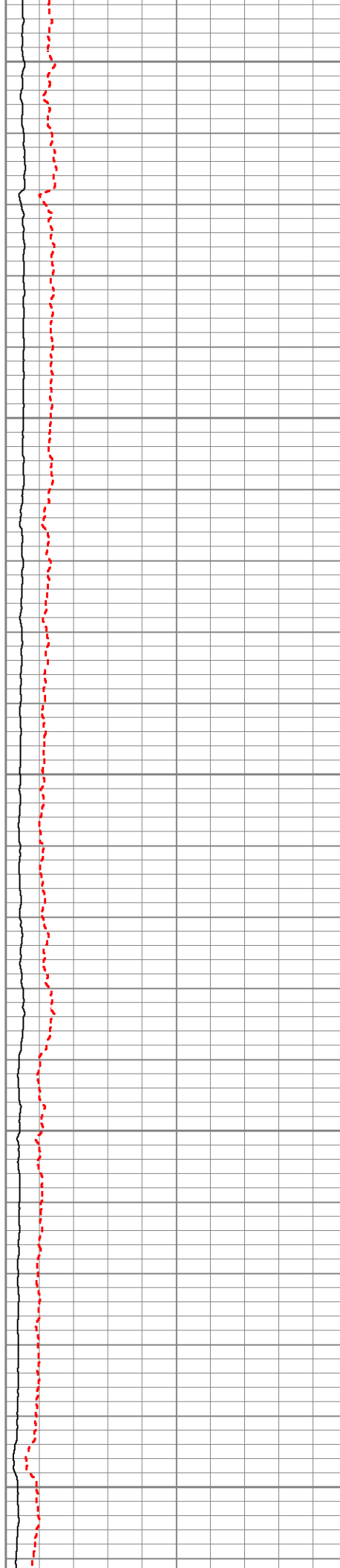
1750

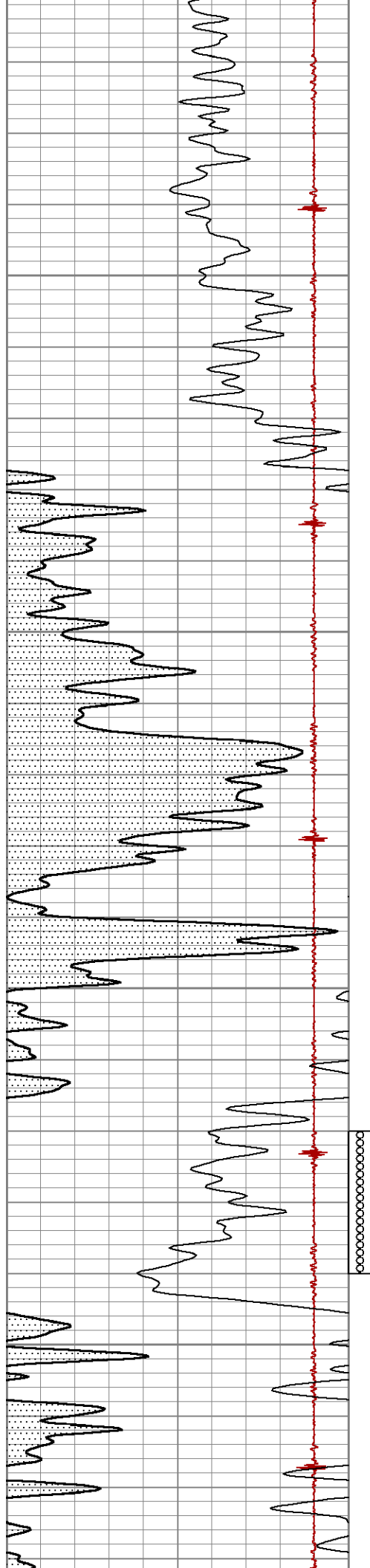
1800

1850

1900

1950



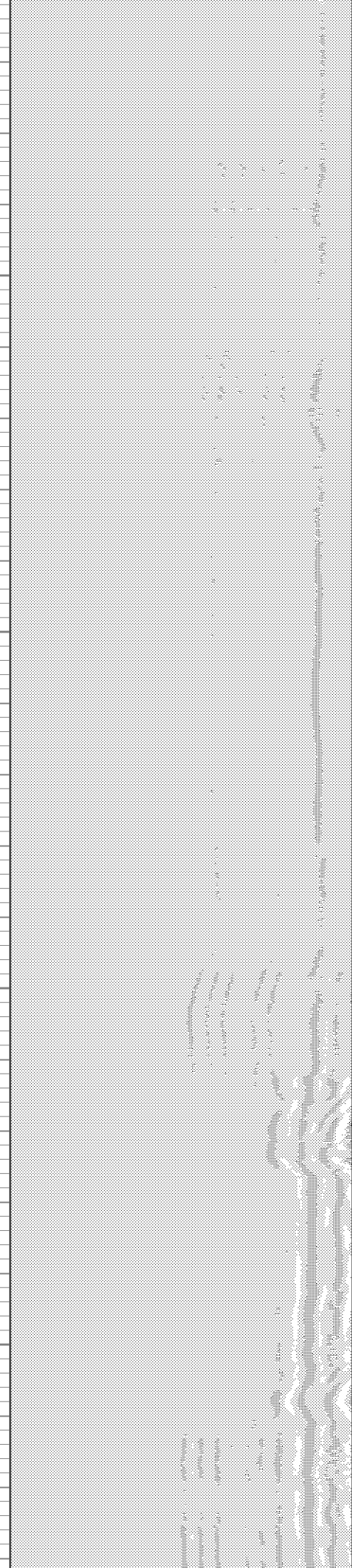


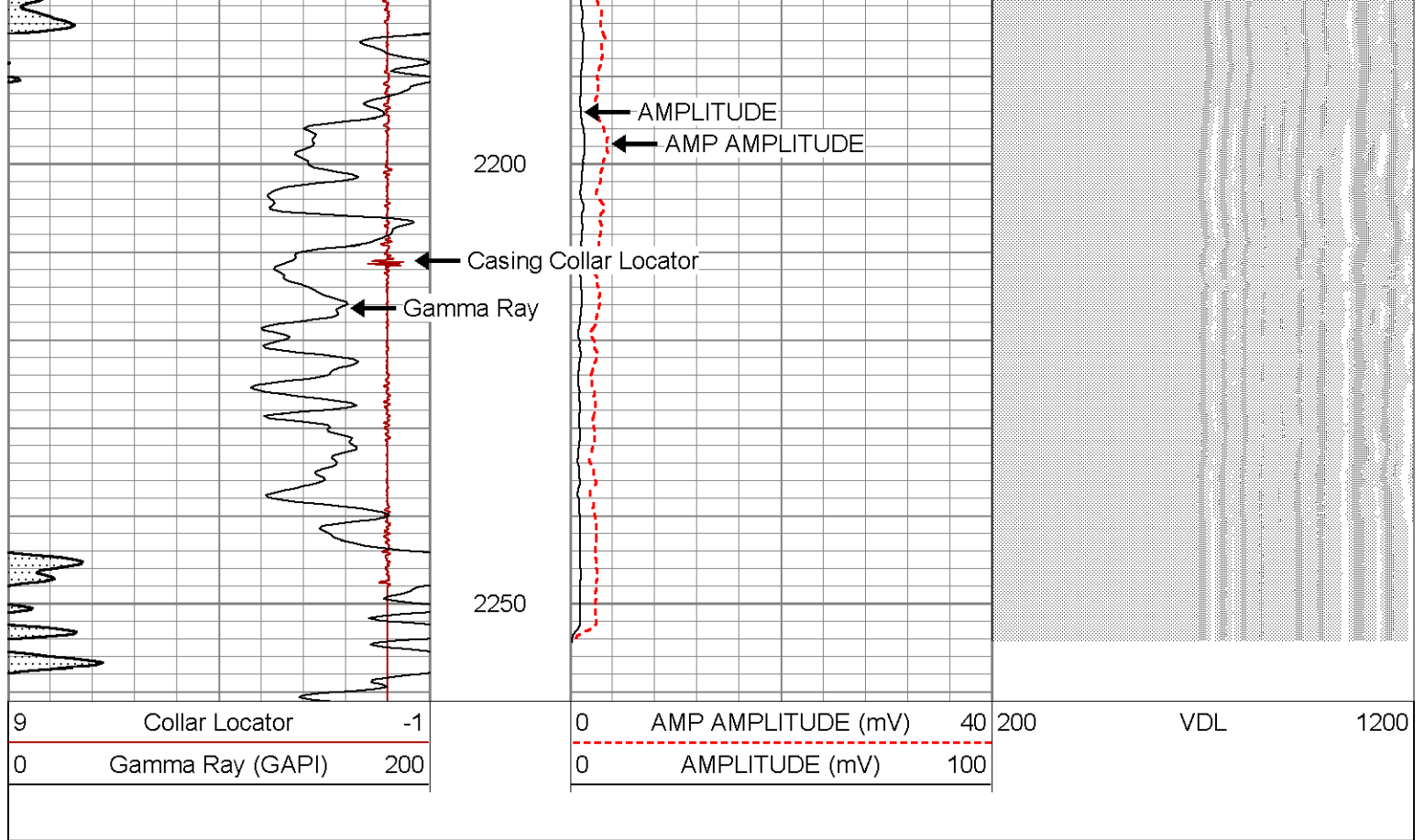
2000

2050

2100

2150





| Sensor | Offset (ft) | Schematic | Description | Len (ft) | OD (in) | Wt (lb) |
|--------|-------------|-----------|--|----------|---------|---------|
| | | | PTS275 | 2.83 | 2.75 | |
| WVF3FT | 12.96 | | RBT-Probe (Base) Probe Radii Bond Tool with Digital Telemetry | 8.92 | 2.75 | 90.00 |
| WVFCAL | 12.96 | | | | | |
| WVFS1 | 12.96 | | | | | |
| WVFS2 | 12.96 | | | | | |
| WVFS3 | 12.96 | | | | | |
| WVFS4 | 12.96 | | | | | |
| WVFS5 | 12.96 | | | | | |
| WVFS6 | 12.96 | | | | | |
| WVFS7 | 12.96 | | | | | |
| WVFS8 | 12.96 | | | | | |
| WVF5FT | 11.88 | | | | | |

