



COMPENSATED DENSITY COMPENSATED NEUTRON GAMMA RAY

Pioneer Energy Services

Company Augustus Energy Resources, LLC
Well Legacy Acres 34-35 1S44W
Field WildCat
County Yuma State Colorado

Location: API #: 05125120870000

799' FSL & 2194' FEL
SWSE

SEC 35 TWP 1S RGE 44W

Permanent Datum GL Elevation 3792
Log Measured From KB
Drilling Measured From KB

Other Services
Hi. Res.
Induction
Elevation
K.B. 3798
D.F. 3797
G.L. 3792

Date July 16, 2014

Run Number 1

Depth Driller 2325'

Depth Logger 2317'

Bottom Logged Interval 2297'

Top Log Interval 1790'

Casing Driller 480'

Casing Logger Not Logged

Bit Size 6.25"

Type Fluid in Hole WBM

Density / Viscosity 8.6 / 28

pH / Fluid Loss 8.0 / 8.4

Source of Sample Flowline

Rm @ Meas. Temp 0.27 @ 65 F

Rmf @ Meas. Temp 0.22 @ 65 F

Rmc @ Meas. Temp 0.32 @ 65 F

Source of Rmf / Rmc Calc / Calc

Rm @ BHT 0.17 @ 103 F

Time Circulation Stopped 2000

Time Logger on Bottom 2345

Maximum Recorded Temperature 103 F

Equipment Number 48

Location Ft. Morgan, CO

Recorded By Matt Gill

Witnessed By Justin Stone

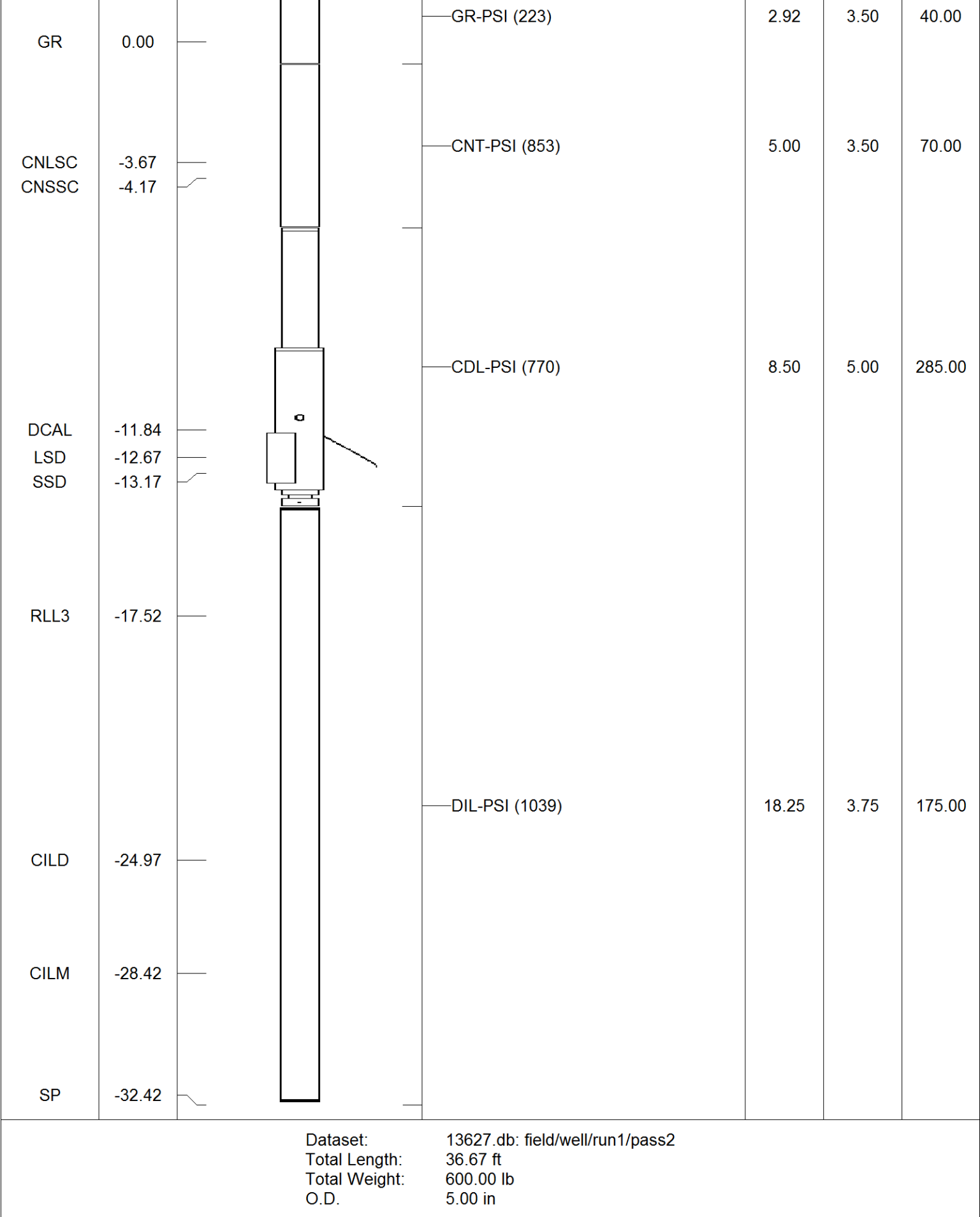
<<< Fold Here >>>

All interpretations are opinions based on inferences from electrical or other measurements and Pioneer Wireline Services, LLC cannot and does not guarantee the accuracy or correctness of any interpretation, and Pioneer Wireline Services, LLC will not be liable or responsible for any loss, costs, damages, or expenses incurred or sustained by anyone resulting from any interpretation made by any of our officers, agents or employees.

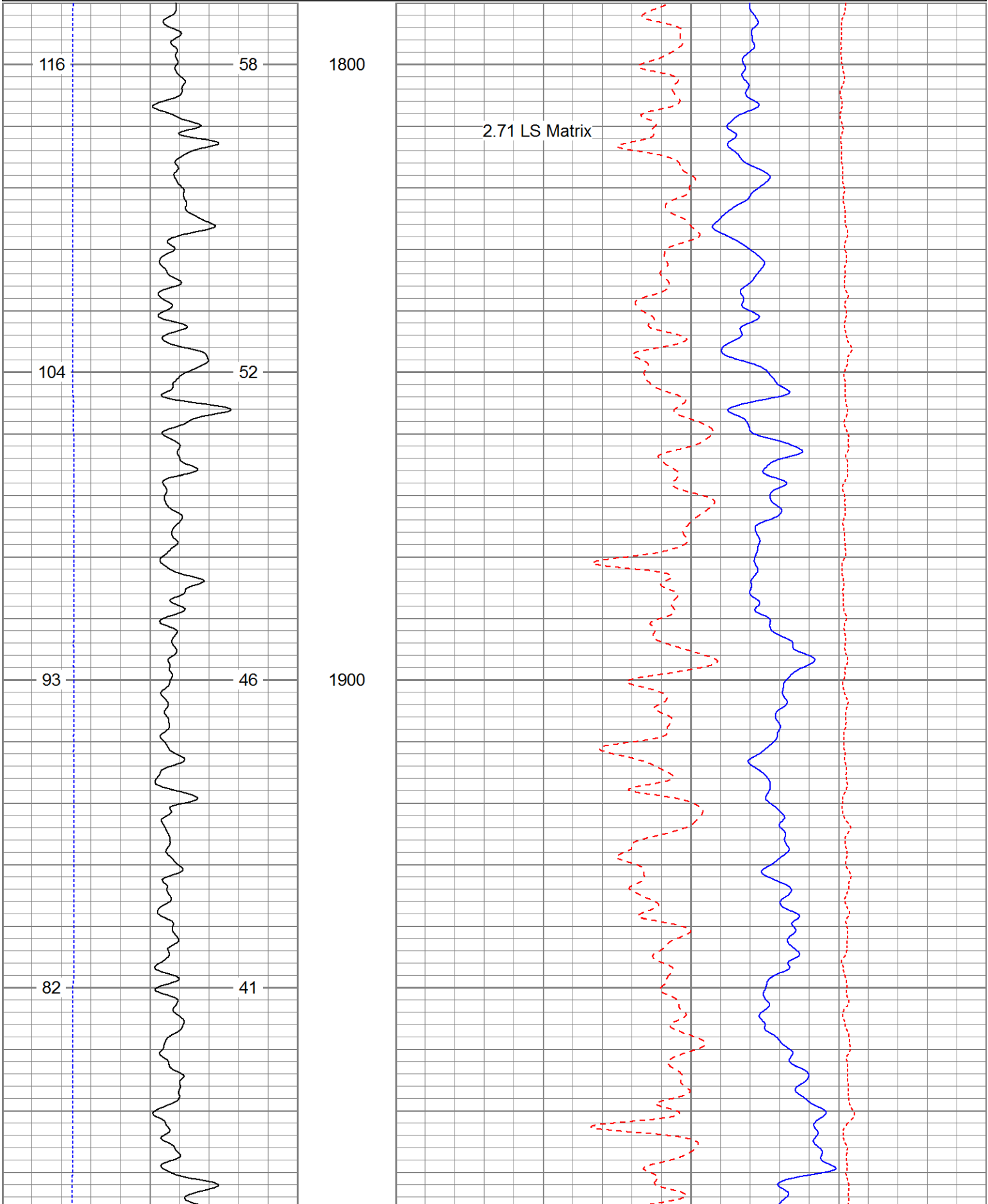
Comments

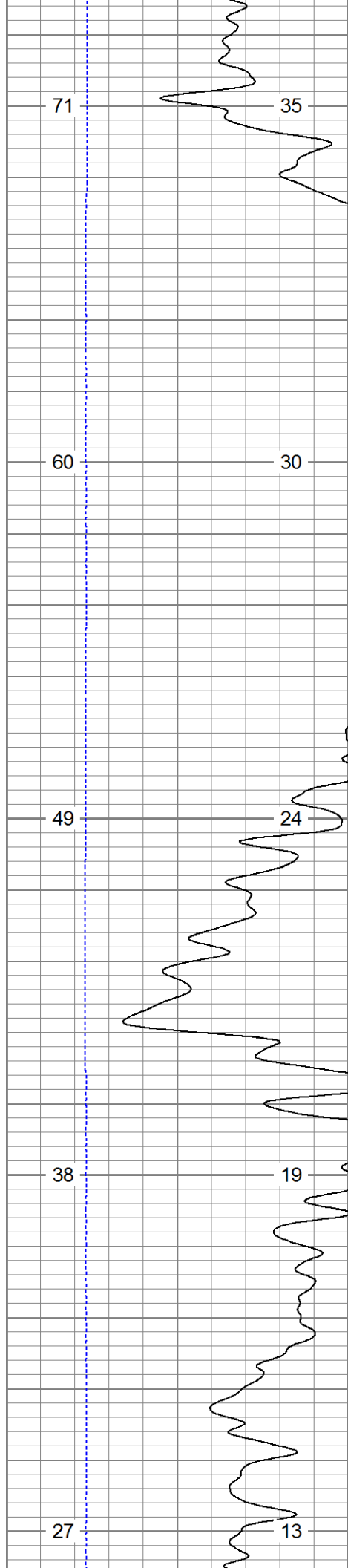
Annular volume calculated for 4.5" casing
Excell Drilling Rig 2
Thank you for using Pioneer Energy Services.

| Sensor | Offset (ft) | Schematic | Description | Len (ft) | OD (in) | Wt (lb) |
|--------|-------------|-----------|-------------|----------|---------|---------|
| | | | CHD (~0) | 2.00 | 3.50 | 30.00 |



| | | | | | | | | | | | | |
|------------|--|--|----------------------|------------|-----|----|--|--|-----------------------|--|-------------------|-----|
| 4 | | | Density Caliper (in) | | 14 | 60 | | | Density Porosity (pu) | | 0 | |
| 0 | | | Gamma Ray (GAPI) | | 200 | 60 | | | Neutron Porosity (pu) | | 0 | |
| TBHV (ft3) | | | | ABHV (ft3) | | | | | -0.5 | | Correction (g/cc) | 0.5 |
| | | | | | | | | | | | | |

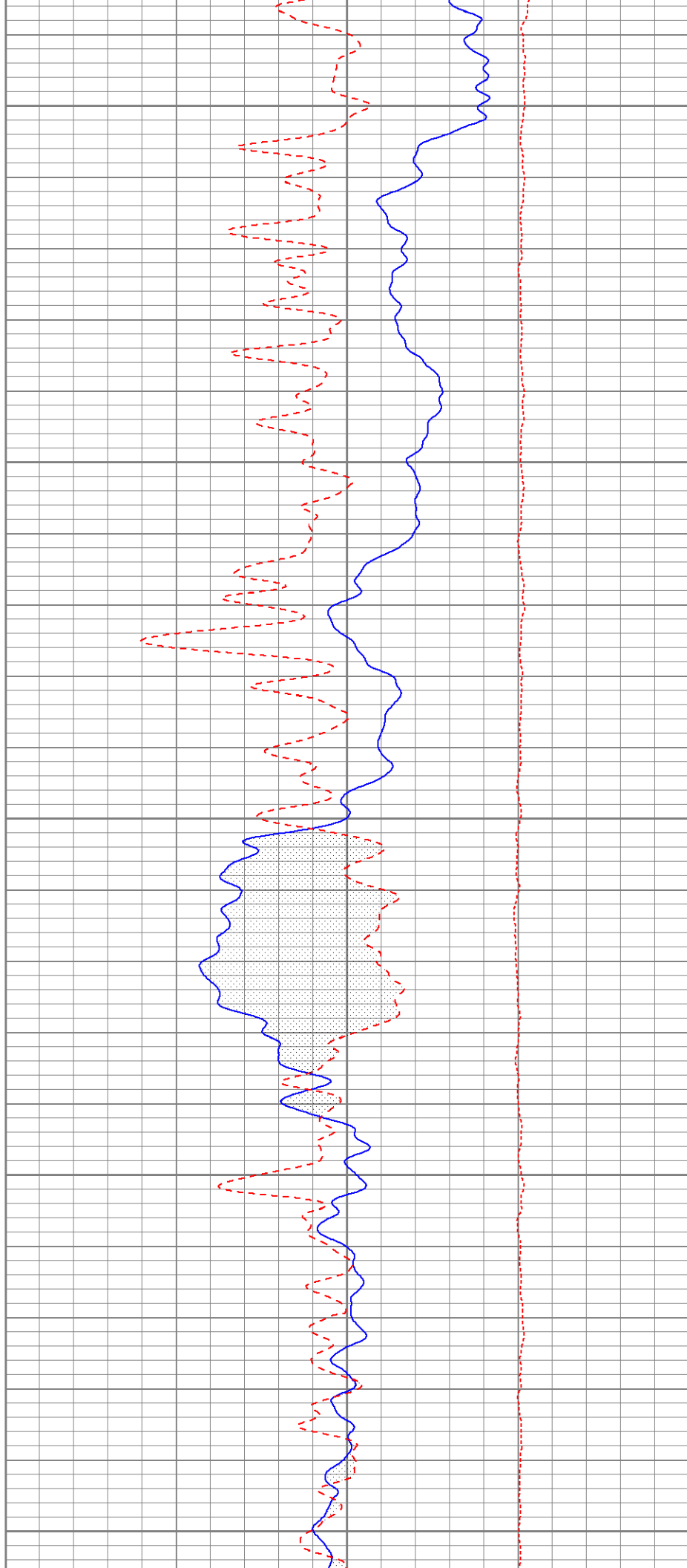


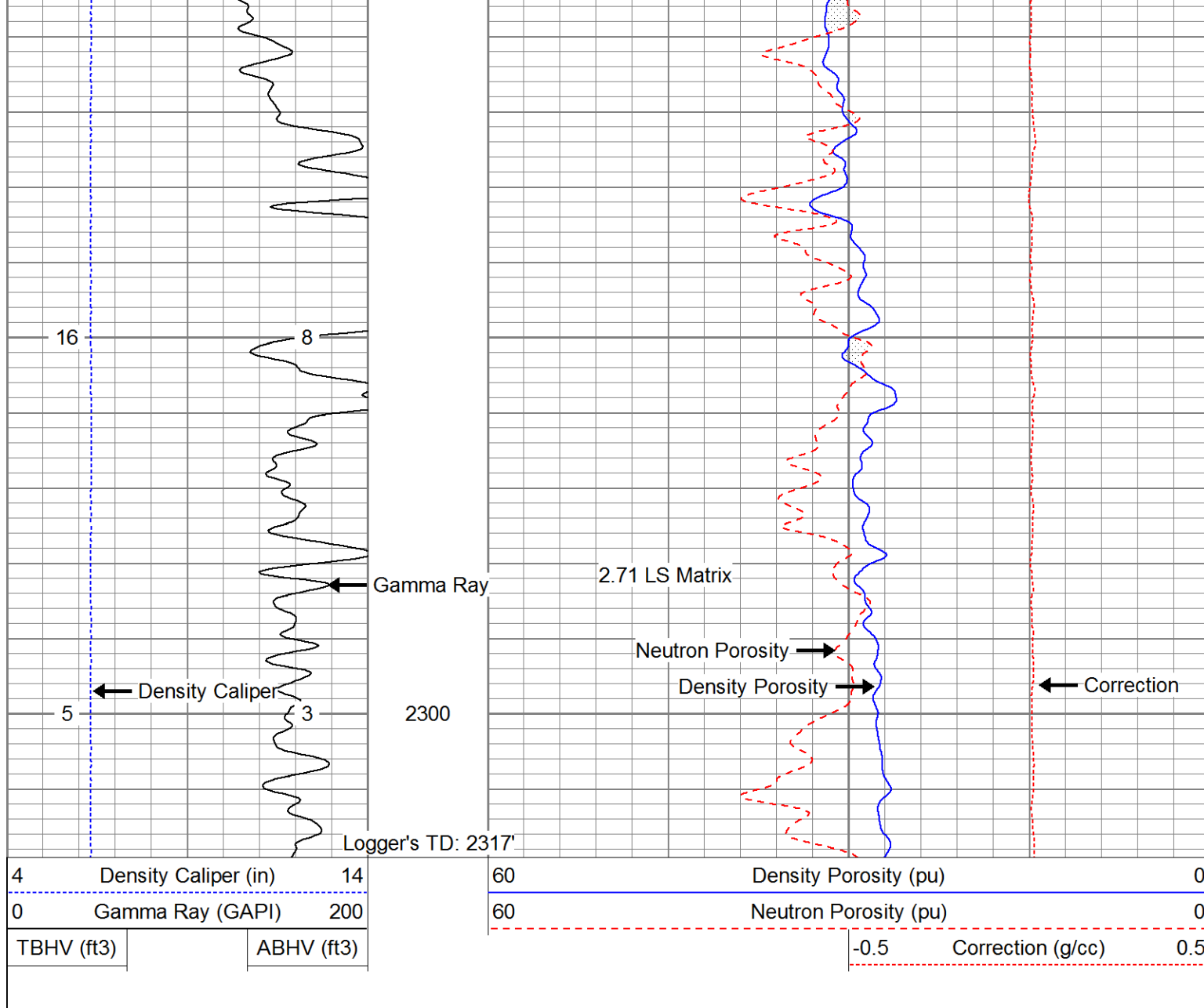


2000

2100

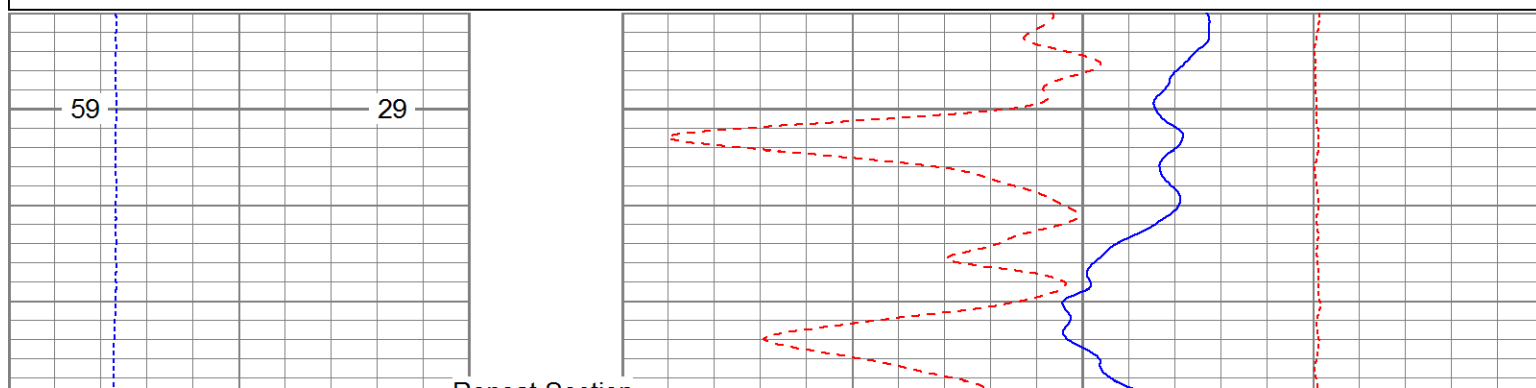
2200

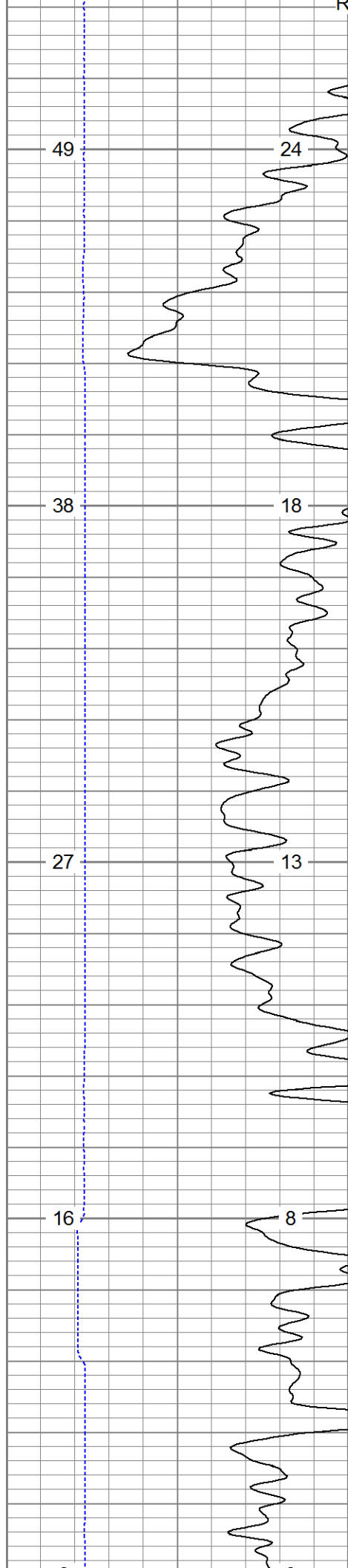




| | |
|----------------------|------------------------------------|
| Database File: | 13627.db |
| Dataset Pathname: | pass2.1 |
| Presentation Format: | DEN_NE~1 |
| Dataset Creation: | Wed Jul 16 23:55:06 2014 by Calc 0 |
| Charted by: | Depth in Feet scaled 1:240 |

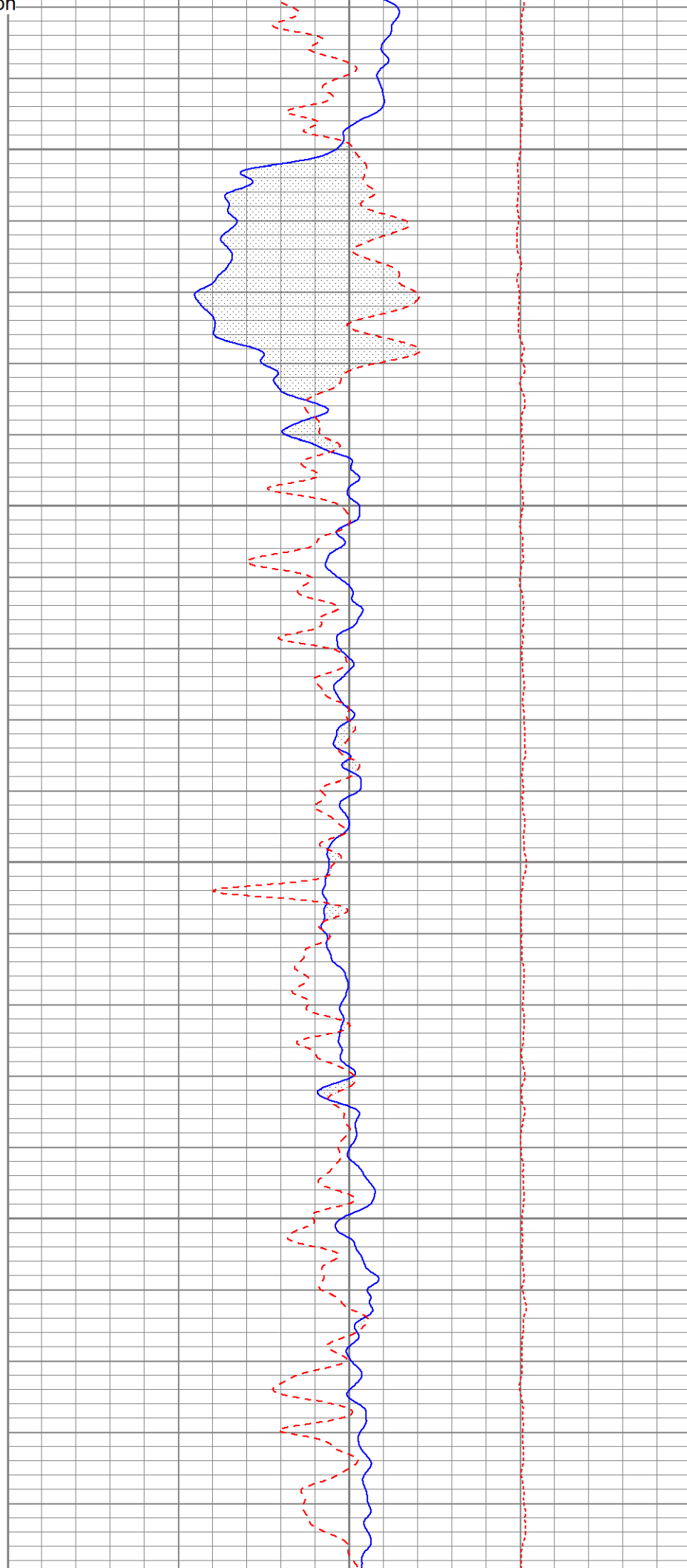
| | | |
|------------|-----------------------|------------|
| 4 | Density Caliper (in) | 14 |
| 0 | Gamma Ray (GAPI) | 200 |
| TBHV (ft3) | | ABHV (ft3) |
| 60 | Density Porosity (pu) | 0 |
| 60 | Neutron Porosity (pu) | 0 |
| -0.5 | Correction (g/cc) | 0.5 |

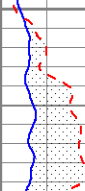




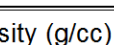
2100

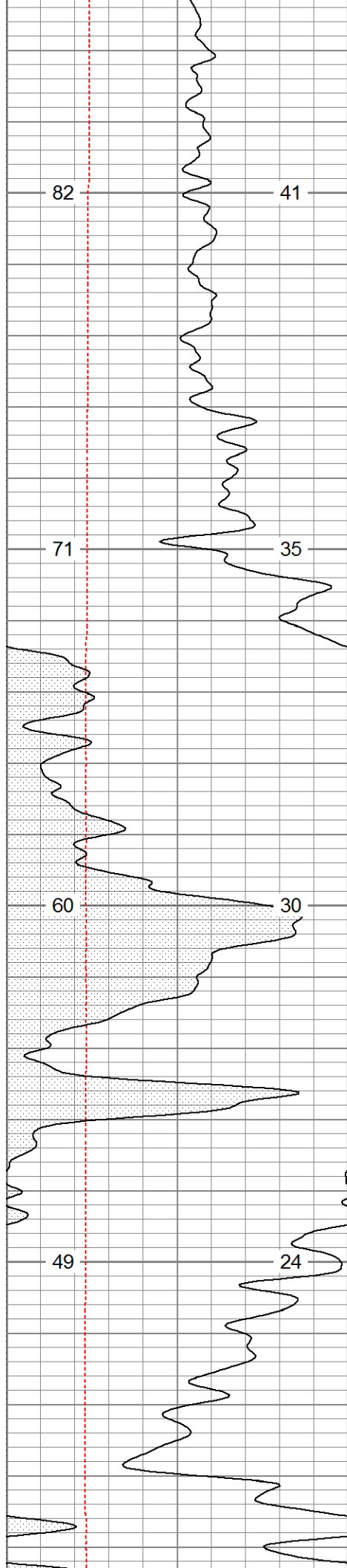
2200





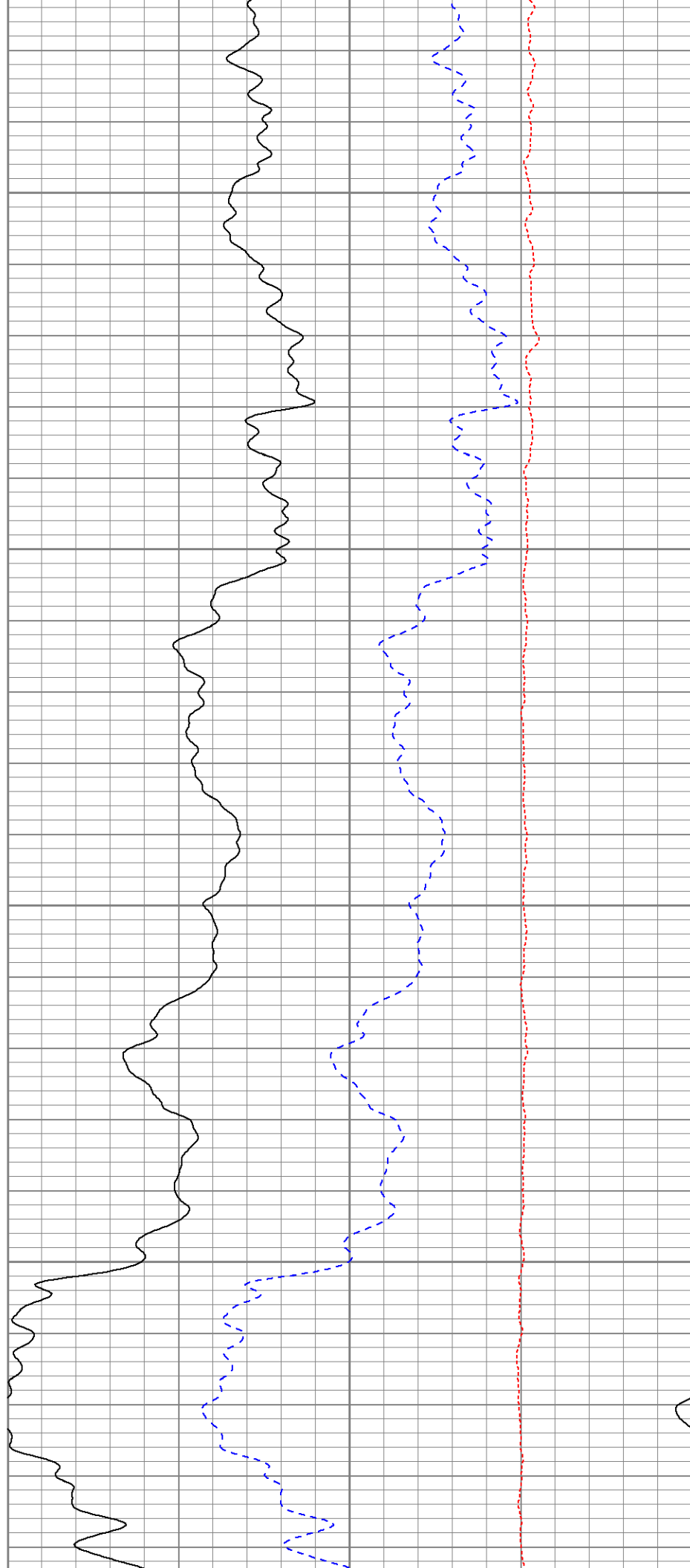
13627.db

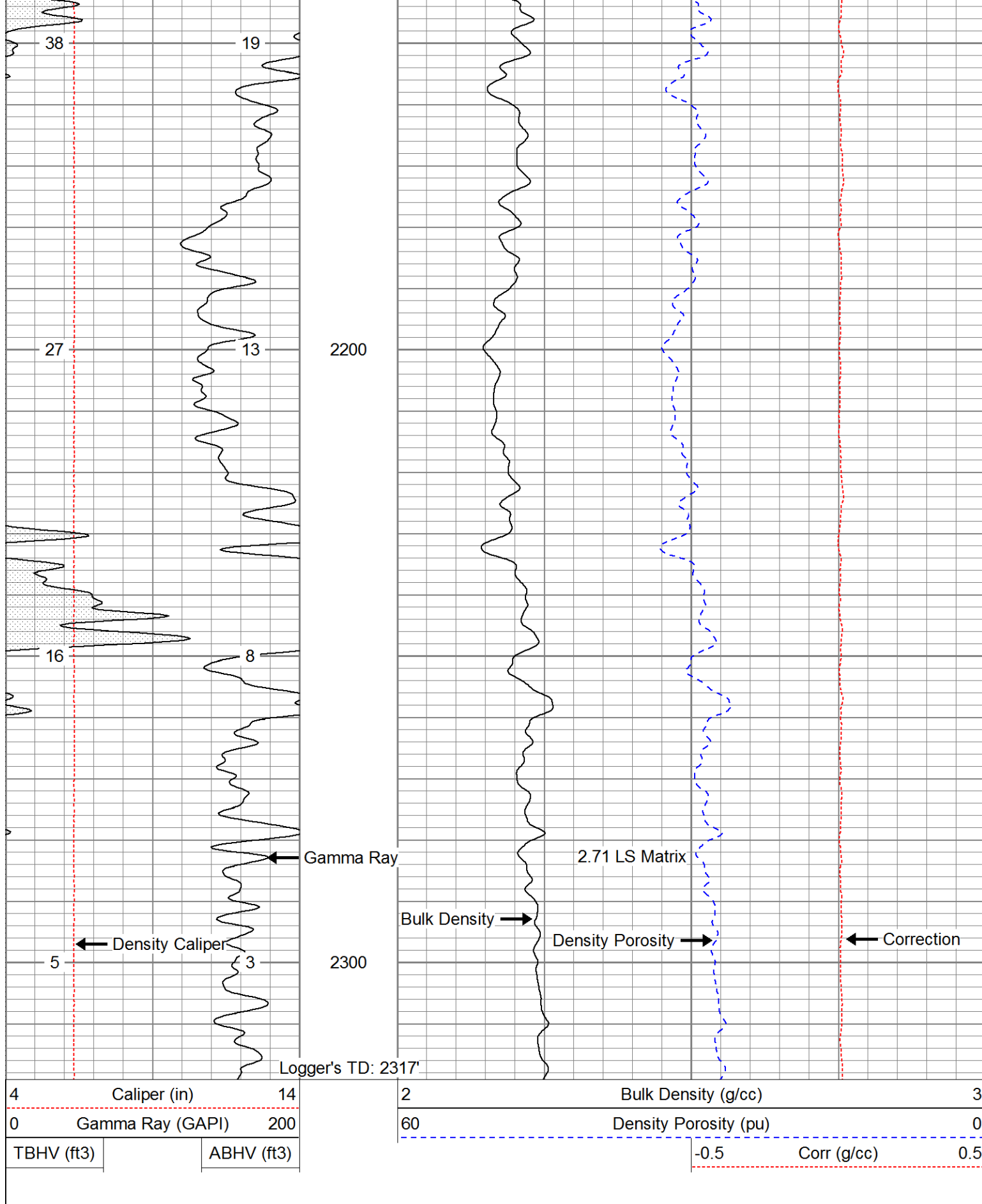




2000

2100





Calibration Report

Database File: 13627.db
Dataset Pathname: pass3.1
Dataset Creation: Thu Jul 17 00:18:20 2014 by Calc 0

Dual Induction Calibration Report

Serial-Model: 1039-PSI
Surface Cal Performed:

| Loop: | Readings | | References | | | Results | |
|--------|----------|-------|------------|-------|--------|---------|---------|
| | Air | Loop | Air | Loop | | m | b |
| Deep | 0.000 | 1.000 | 0.000 | 1.000 | mmho/m | 0.585 | -45.000 |
| Medium | 0.000 | 1.000 | 0.000 | 1.000 | mmho/m | 0.470 | -40.000 |

Compensated Density Calibration Report

Serial-Model: 770-PSI
Source / Verifier: 4400 / PSI
Master Calibration Performed: Wed Jun 04 12:13:48 2014
Before Survey Verification Performed:
After Survey Verification Performed:

Master Calibration

| | Density | | Far Detector | Near Detector | |
|---------------------|---------|------|-----------------------------|---------------|-----|
| Magnesium | 1.750 | g/cc | 6052.27 | 9575.17 | cps |
| Aluminum | 2.690 | g/cc | 1090.90 | 5872.16 | cps |
| Spine Angle = 74.07 | | | Density/Spine Ratio = 0.528 | | |
| | Size | | Reading | | |
| Small Ring | 4.50 | in | 1.80 | | |
| Large Ring | 13.00 | in | 1.46 | | |

Before Survey Verification

| Target | Measured |
|--------|----------|
| g/cc | g/cc |
| g/cc | g/cc |
| g/cc | g/cc |

After Survey Verification

| Target | Measured |
|--------|----------|
| g/cc | g/cc |
| g/cc | g/cc |
| g/cc | g/cc |

Compensated Neutron Calibration Report

Serial Number: 853
Tool Model: PSI

CALIBRATION

| Detector | Readings | | Target | | Normalization |
|-------------|----------|-----|--------|-----|---------------|
| Short Space | 1.00 | cps | 1.00 | cps | 1.9000 |
| Long Space | 1.00 | cps | 1.00 | cps | 2.0000 |

PRE-SURVEY VERIFICATION

| Detector | Readings | | Measured | Target |
|----------------|----------|-----|----------|--------|
| 1) Short Space | | cps | | |

| | | | | |
|----|---------------------------|------------|----|----|
| 1) | Short Space Long Space | cps cps | pu | pu |
| 2) | Short Space Long Space | cps cps | pu | |
| 3) | Short Space Long Space | cps cps | pu | |

| POST-SURVEY VERIFICATION | | | | |
|--------------------------|---------------------------|------------|----------|--------|
| | Detector | Readings | Measured | Target |
| 1) | Short Space Long Space | cps cps | pu | pu |
| 2) | Short Space Long Space | cps cps | pu | pu |
| 3) | Short Space Long Space | cps cps | pu | pu |

| |
|------------------------------|
| Gamma Ray Calibration Report |
|------------------------------|

| | | |
|---------------------|--------------------------|----------|
| Serial Number: | 223 | |
| Tool Model: | PSI | |
| Performed: | Tue Apr 29 09:44:02 2014 | |
| Calibrator Value: | 253.0 | GAPI |
| Background Reading: | 30.0 | cps |
| Calibrator Reading: | 380.0 | cps |
| Sensitivity: | 0.6300 | GAPI/cps |