



HIGH RESOLUTION INDUCTION

Company	Augustus Energy Resources, LLC	Company	Augustus Energy Resources, LLC
Well	Legacy Acres 34-35 1S44W	Well	Legacy Acres 34-35 1S44W
Field	WildCat	Field	WildCat
County	Yuma	County	Yuma
State	Colorado	State	Colorado
Location:		API # : 05125120870000	
799' FSL & 2194' FEL SWSE		Other Services Density Neutron	
Permanent Datum	GL	Elevation	3792
Log Measured From	KB		
Drilling Measured From	KB		
SEC 35 TWP 1S RGE 44W		Elevation K.B. 3798 D.F. 3797 G.L. 3792	
Date	July 16, 2014		
Run Number	1		
Depth Driller	2325'		
Depth Logger	2317'		
Bottom Logged Interval	2317'		
Top Log Interval	Casing		
Casing Driller	480'		
Casing Logger	480'		
Bit Size	6.25"		
Type Fluid in Hole	WBM		
Density / Viscosity	8.6 / 28		
pH / Fluid Loss	8.0 / 8.4		
Source of Sample	Flowline		
Rm @ Meas. Temp	0.27 @ 65 F		
Rmf @ Meas. Temp	0.22 @ 65 F		
Rmc @ Meas. Temp	0.32 @ 65 F		
Source of Rmf / Rmc	Calc / Calc		
Rm @ BHT	0.17 @ 103 F		
Time Circulation Stopped	2000		
Time Logger on Bottom	2345		
Maximum Recorded Temperature	103 F		
Equipment Number	48		
Location	Ft. Morgan, CO		
Recorded By	Matt Gill		
Witnessed By	Justin Stone		

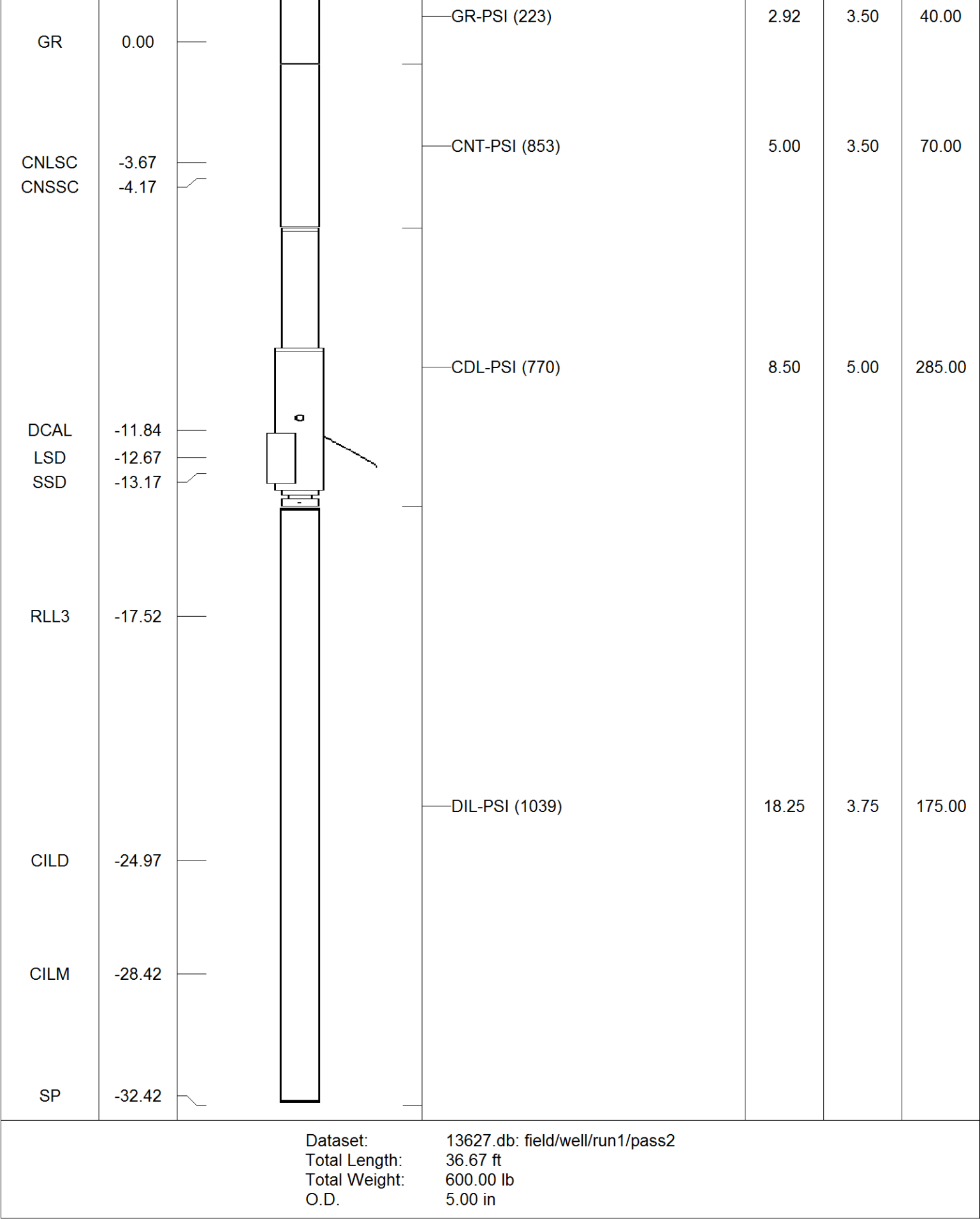
<<< Fold Here >>>

All interpretations are opinions based on inferences from electrical or other measurements and Pioneer Wireline Services, LLC cannot and does not guarantee the accuracy or correctness of any interpretation, and Pioneer Wireline Services, LLC will not be liable or responsible for any loss, costs, damages, or expenses incurred or sustained by anyone resulting from any interpretation made by any of our officers, agents or employees.

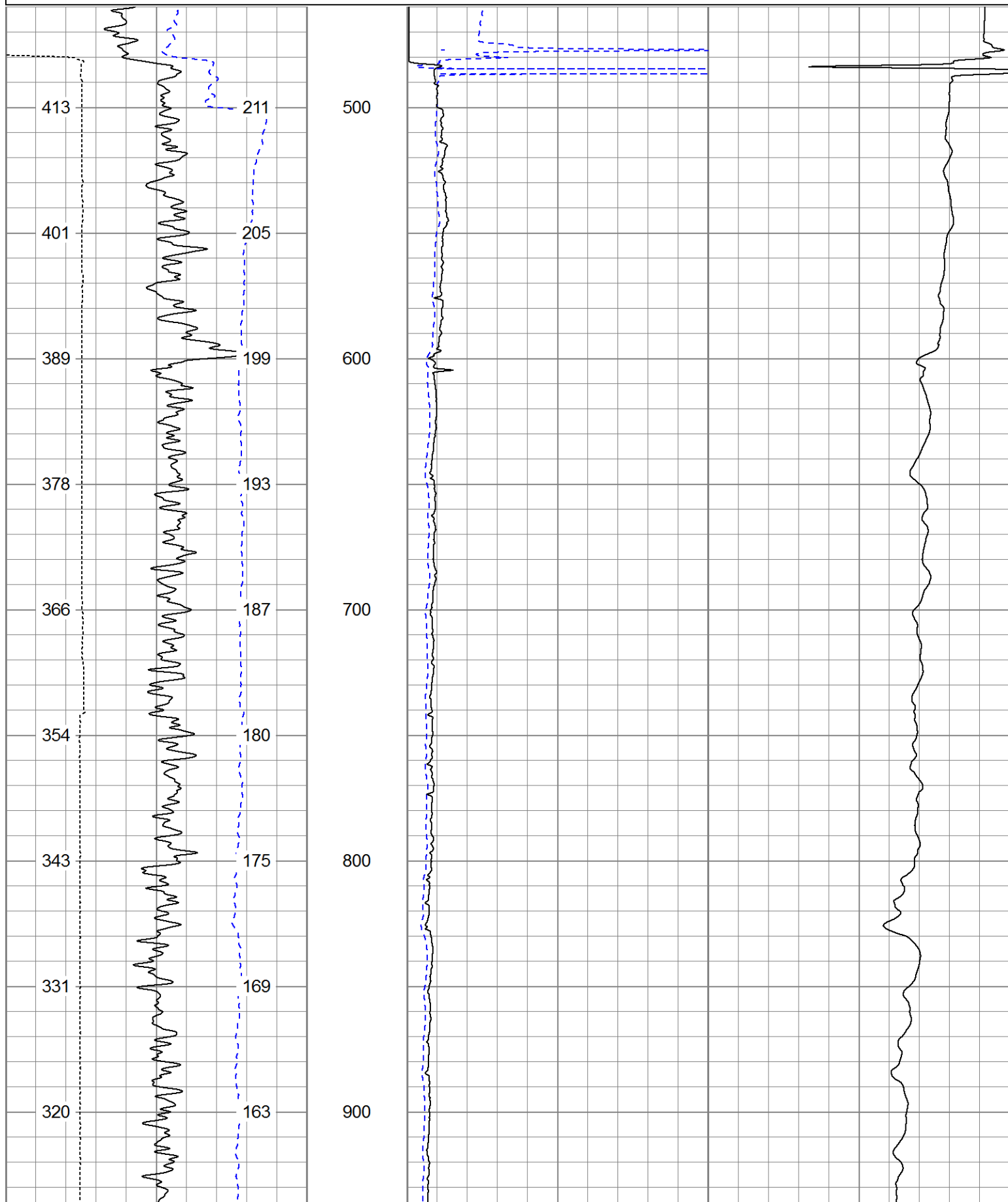
Comments

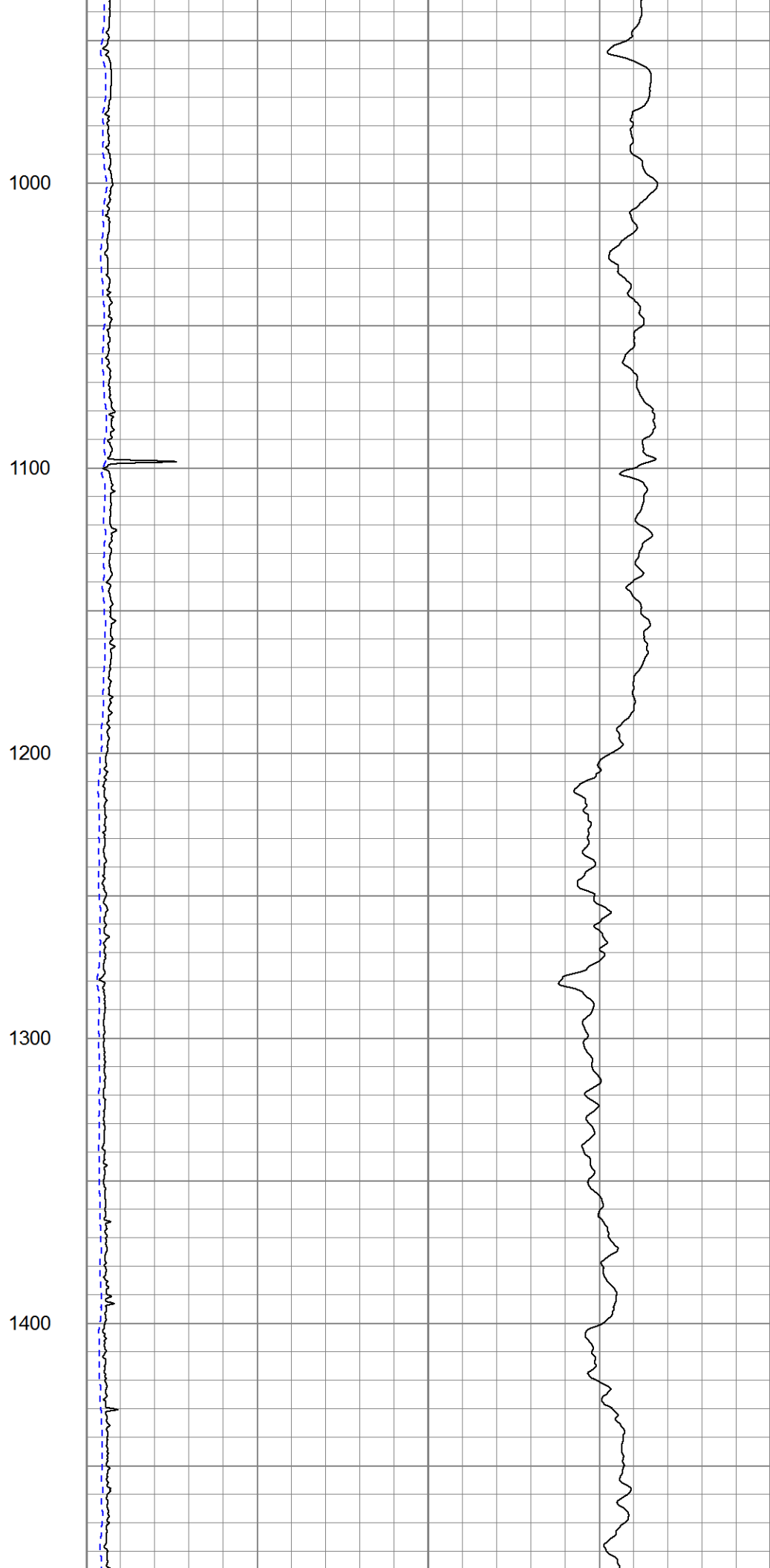
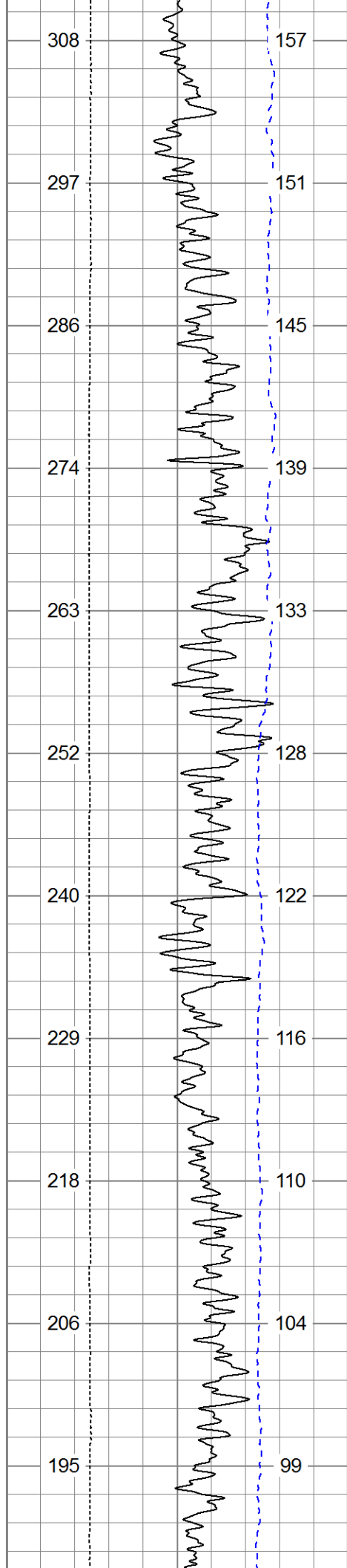
Annular volume calculated for 4.5" casing
Excell Drilling Rig 2
Thank you for using Pioneer Energy Services.

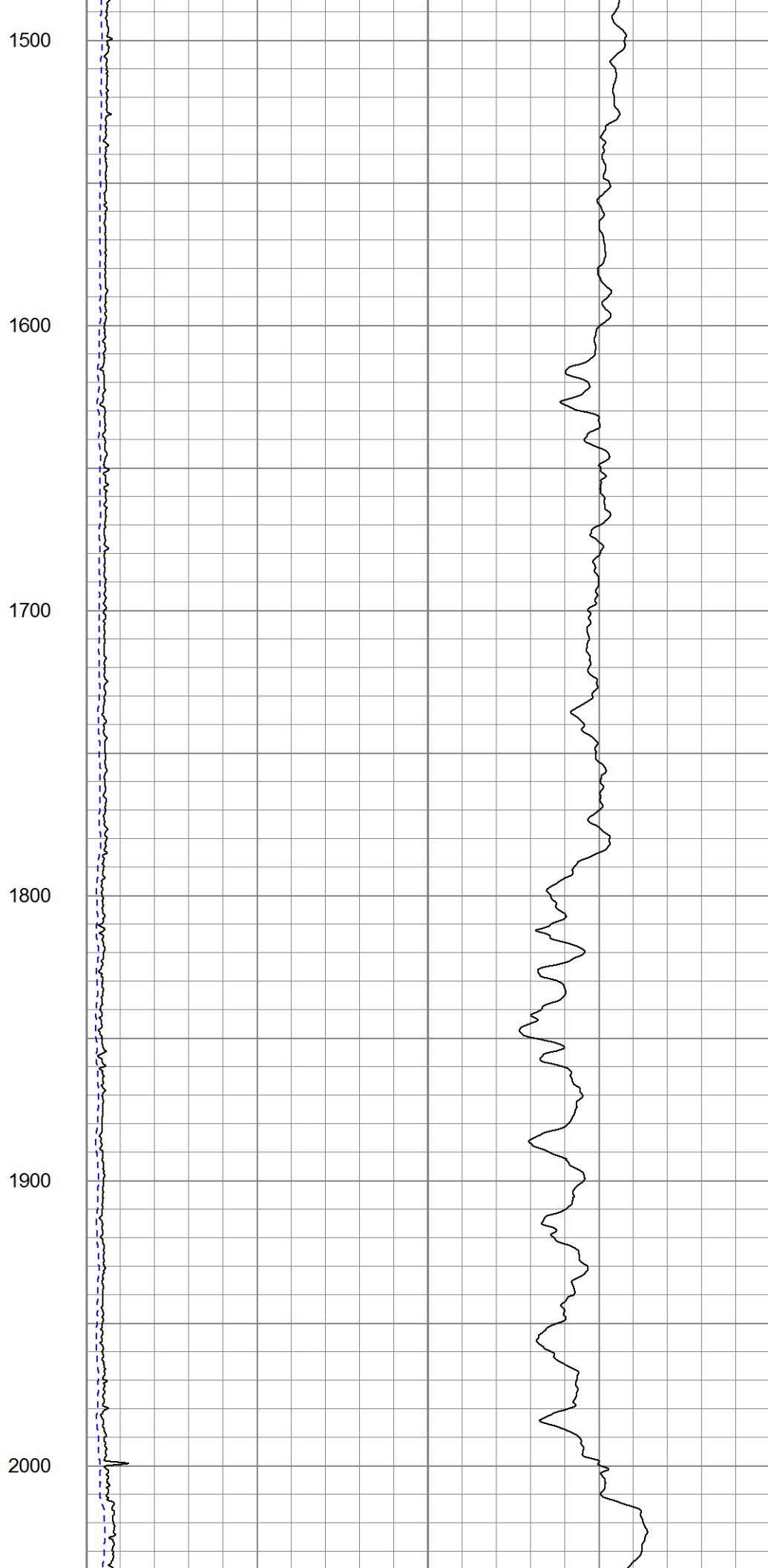
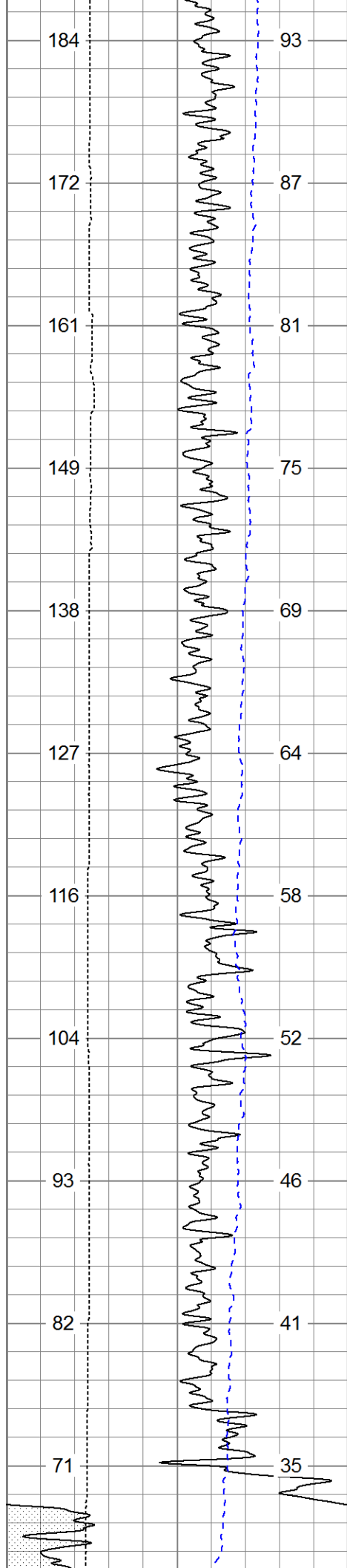
Sensor	Offset (ft)	Schematic	Description	Len (ft)	OD (in)	Wt (lb)
			CHD (~0)	2.00	3.50	30.00

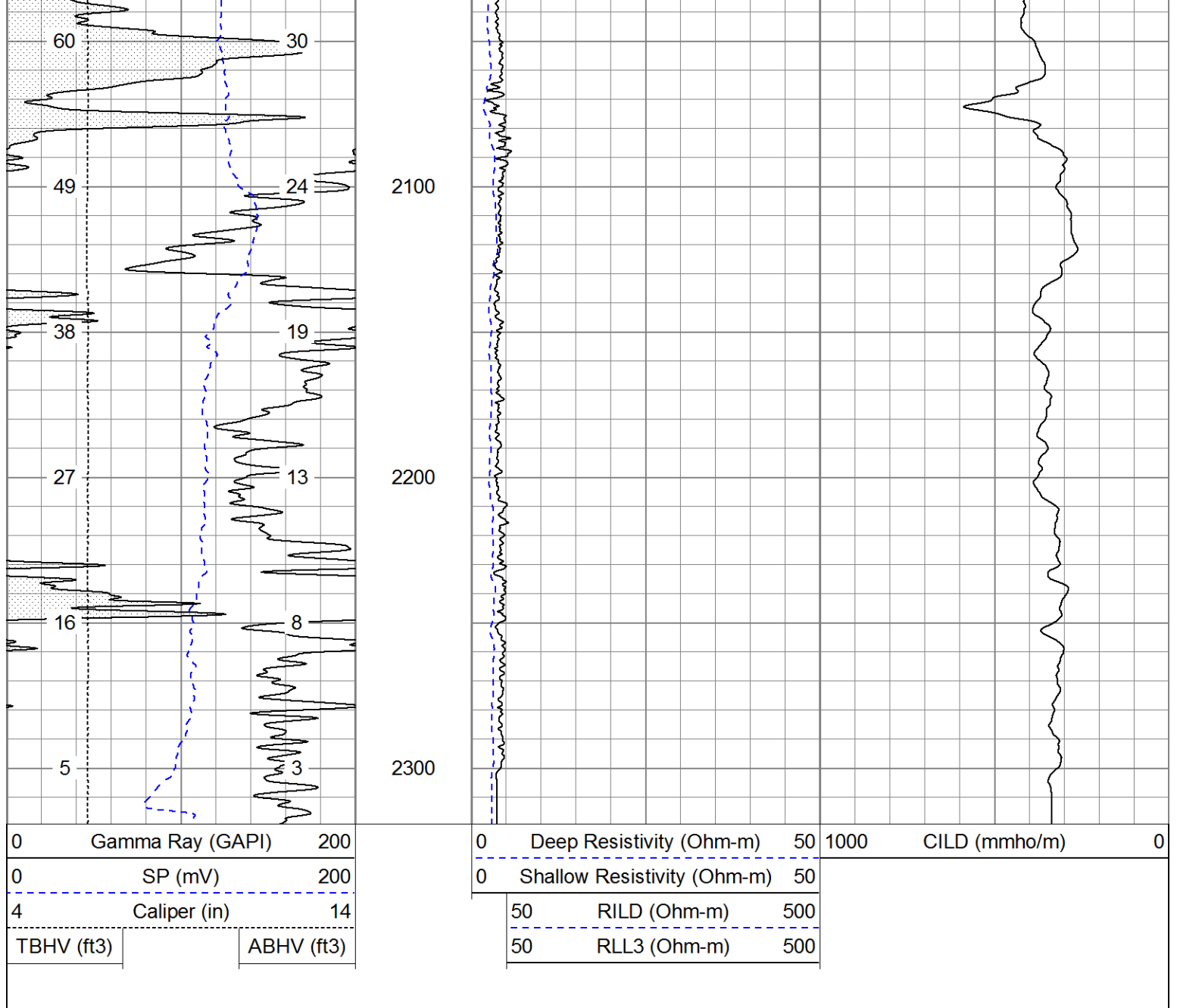


1000	CILD (mmho/m)	0

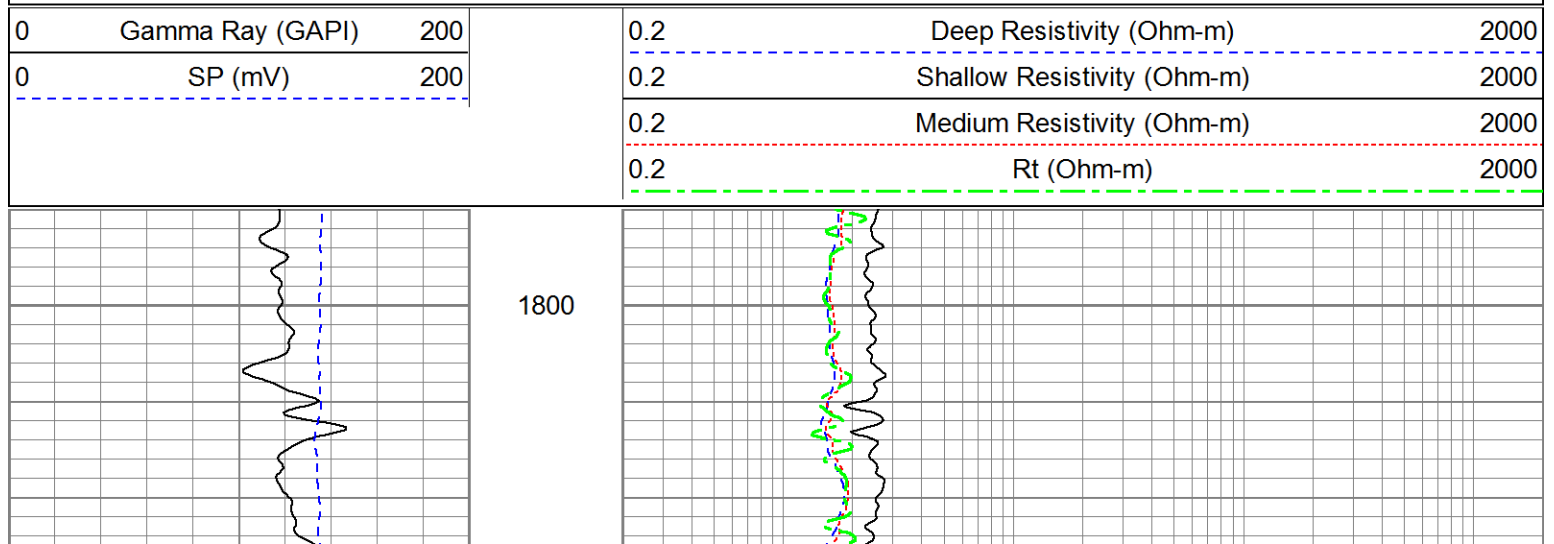


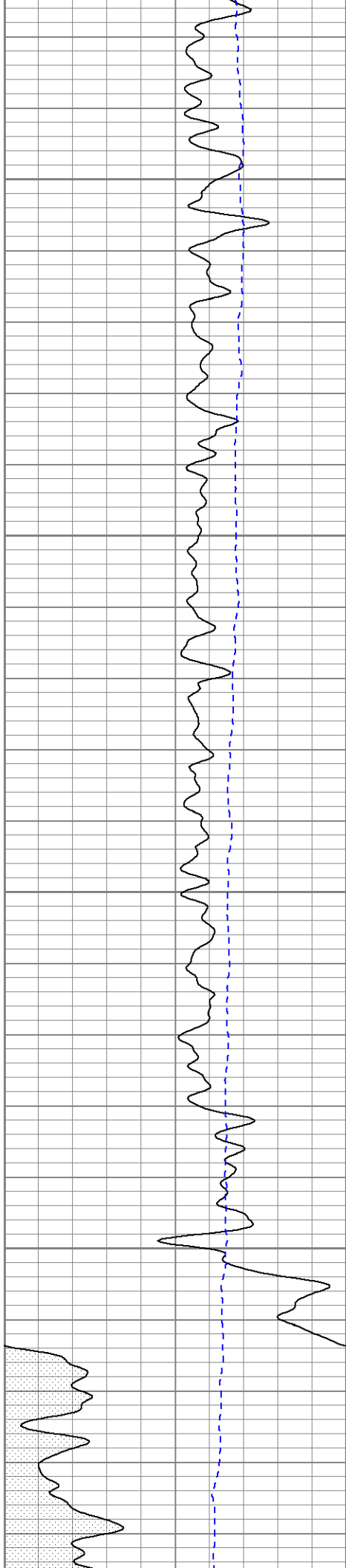






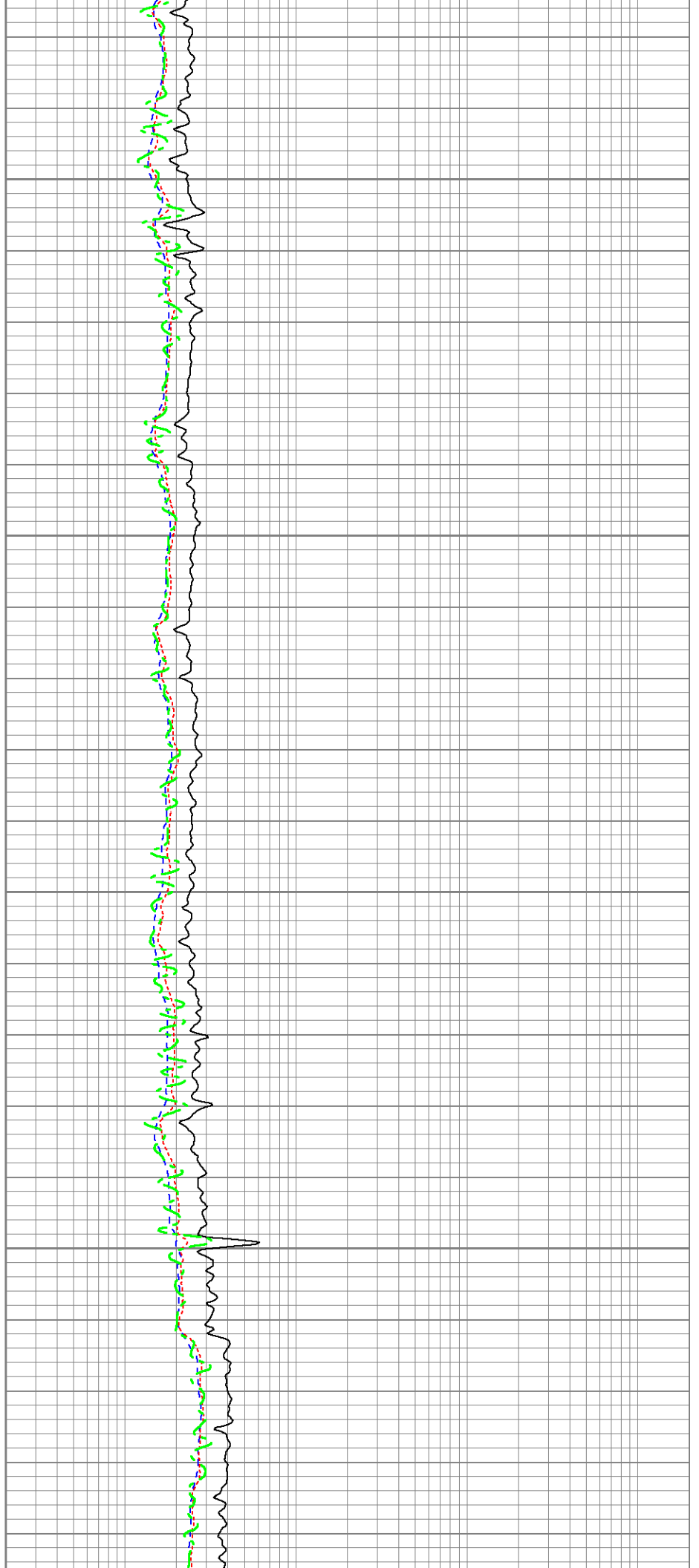
Database File: 13627.db
 Dataset Pathname: final
 Presentation Format: dil
 Dataset Creation: Wed Jul 16 23:52:18 2014
 Charted by: Depth in Feet scaled 1:240

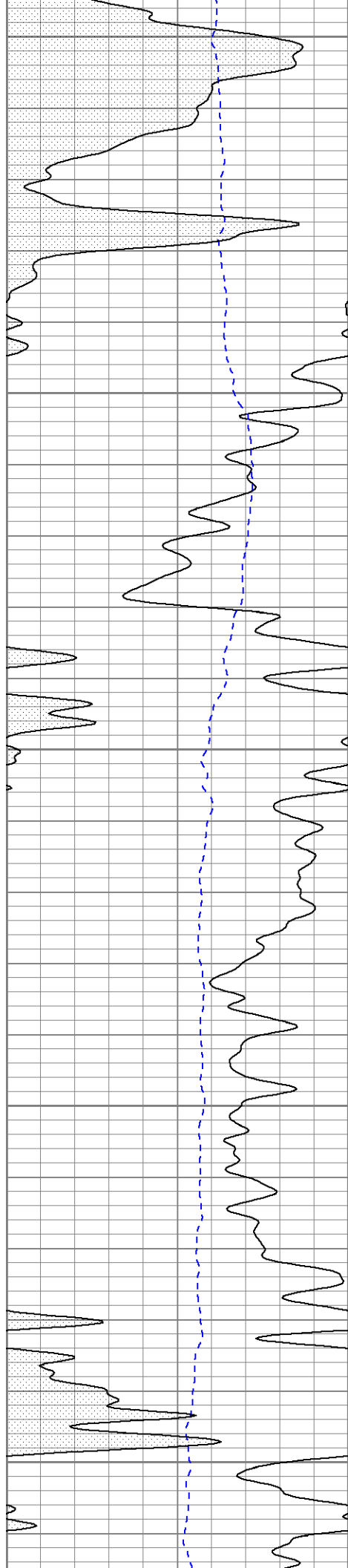




1900

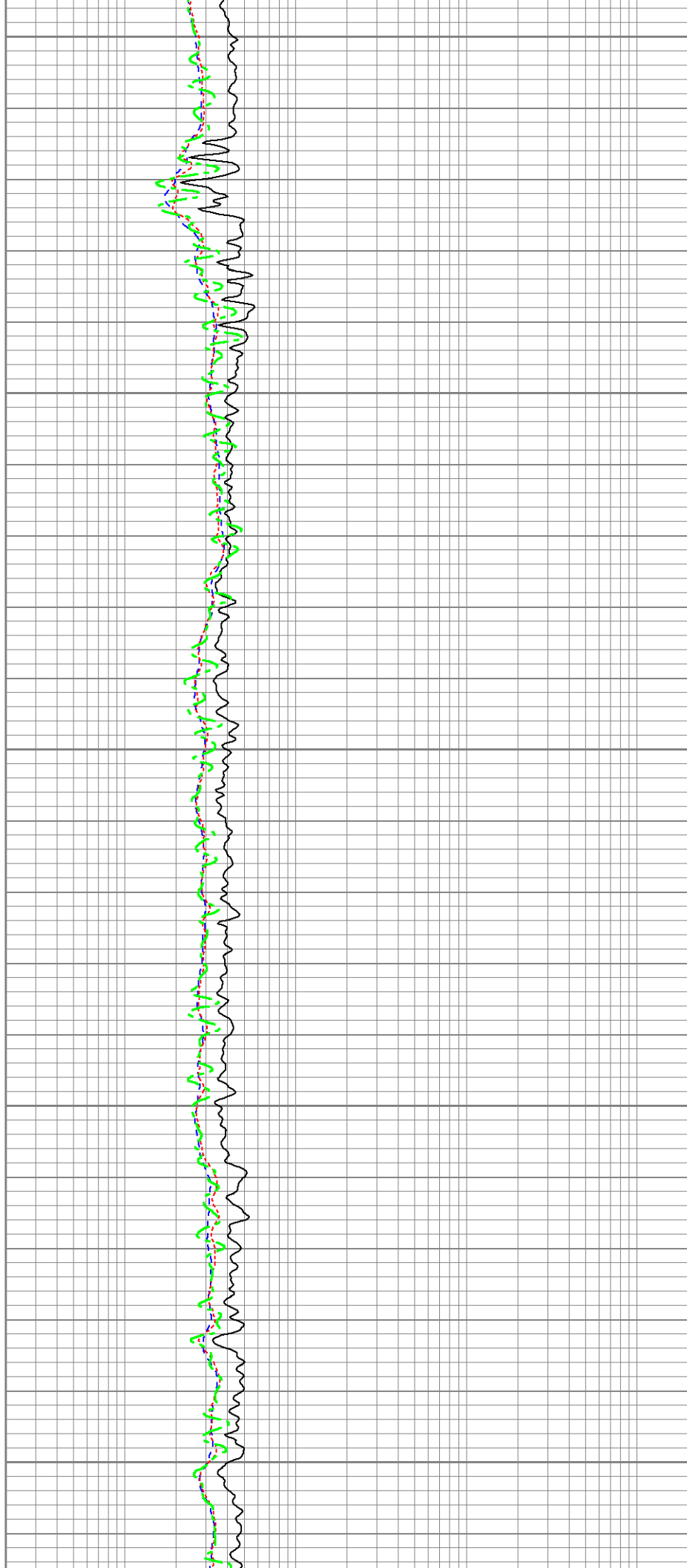
2000

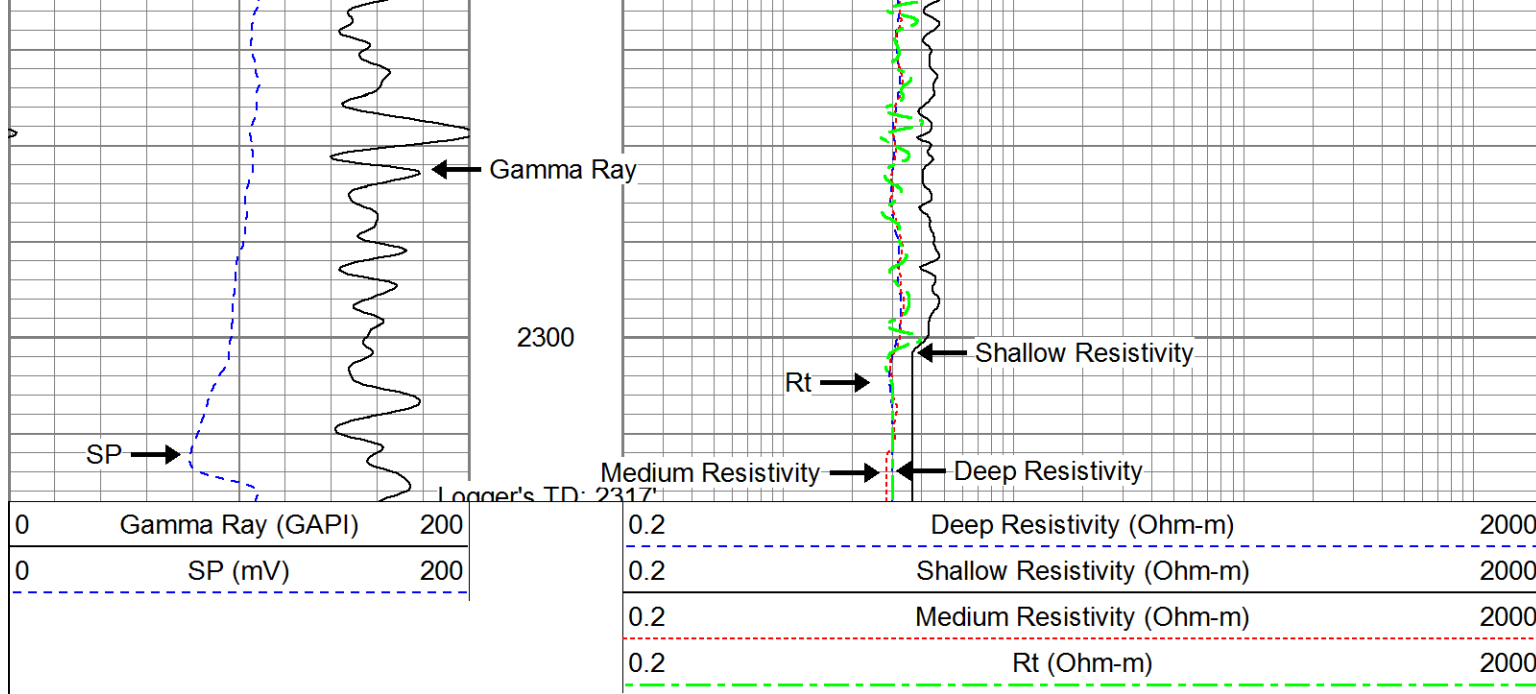




2100

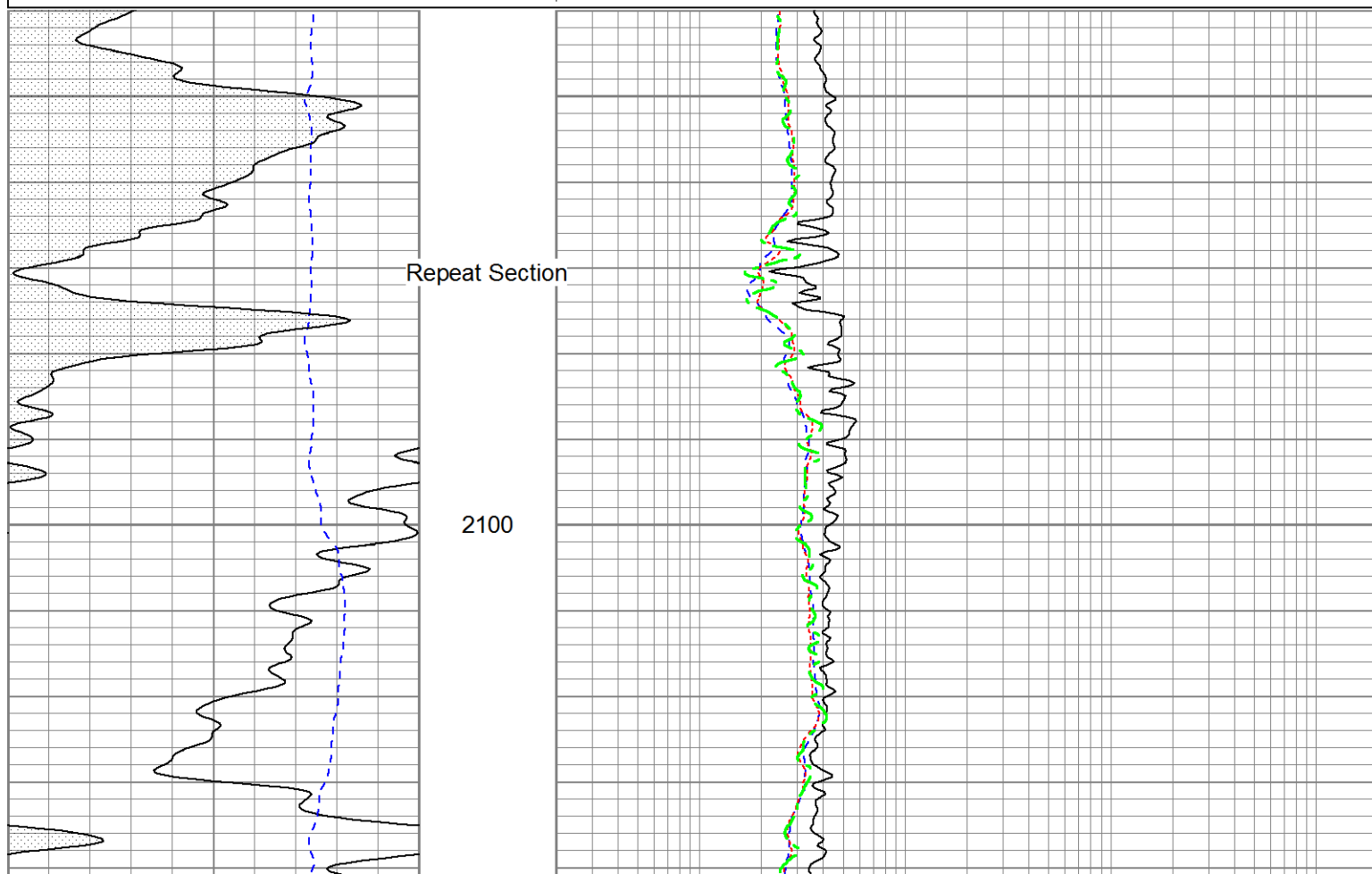
2200

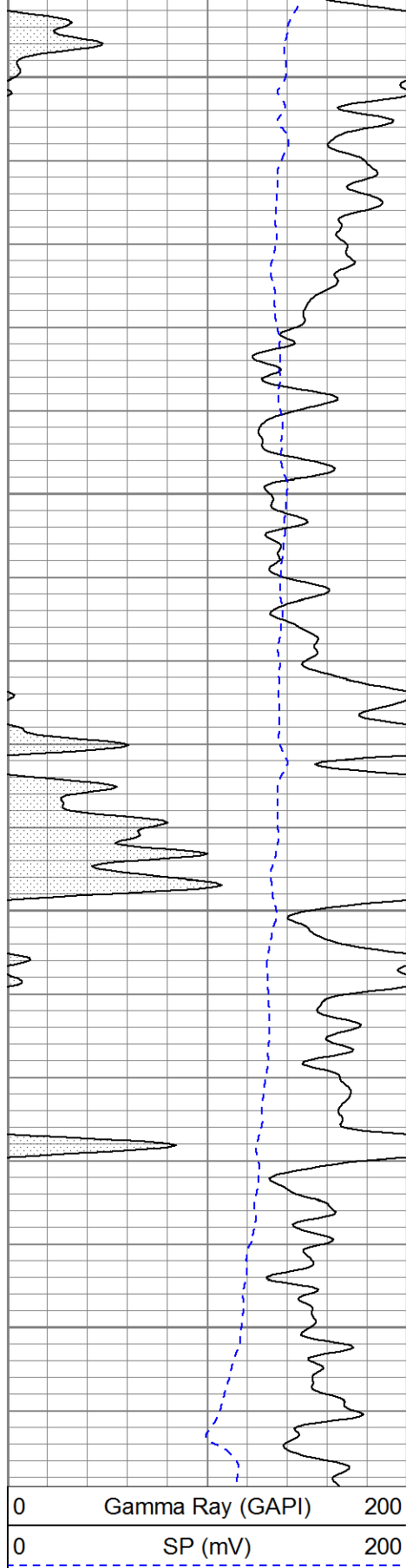




Database File: 13627.db
 Dataset Pathname: pass2.1
 Presentation Format: dil
 Dataset Creation: Wed Jul 16 23:55:06 2014 by Calc 0
 Charted by: Depth in Feet scaled 1:240

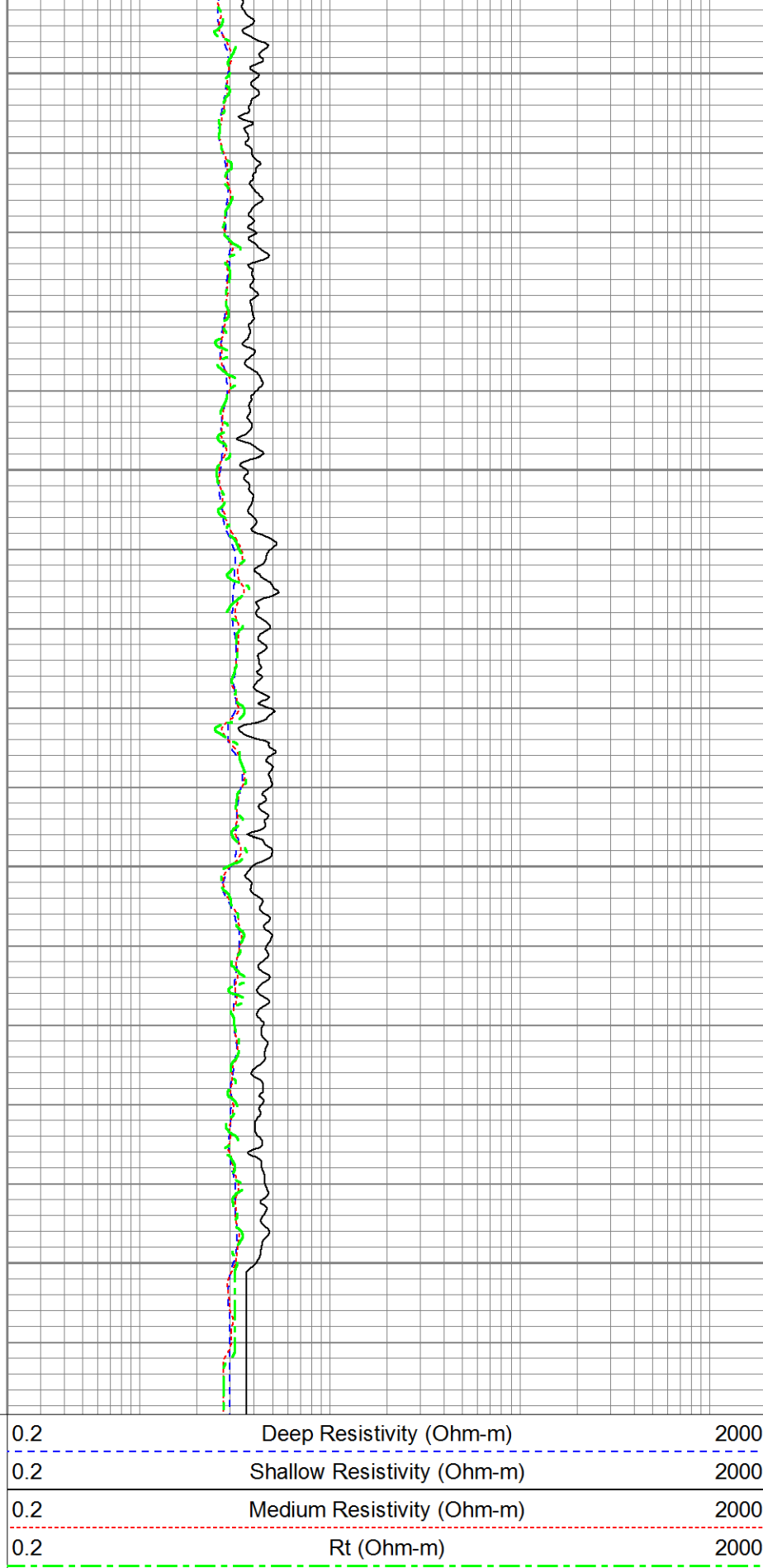
0	Gamma Ray (GAPI)	200	0.2	Deep Resistivity (Ohm-m)	2000
0	SP (mV)	200	0.2	Shallow Resistivity (Ohm-m)	2000
			0.2	Medium Resistivity (Ohm-m)	2000
			0.2	Rt (Ohm-m)	2000





2200

2300



Calibration Report

Database File: 13627.db
 Dataset Pathname: pass2.1
 Dataset Creation: Wed Jul 16 23:55:06 2014 by Calc 0

Dual Induction Calibration Report							
Serial-Model:		1039-PSI					
Surface Cal Performed:							
		Readings		References		Results	
Loop:	Air	Loop		Air	Loop	m	b
Deep	0.000	1.000		0.000	1.000	mmho/m	0.585
Medium	0.000	1.000		0.000	1.000	mmho/m	0.470
							-45.000
							-40.000

Compensated Density Calibration Report					
Serial-Model:		770-PSI			
Source / Verifier:		4400 / PSI			
Master Calibration Performed:		Wed Jun 04 12:13:48 2014			
Before Survey Verification Performed:					
After Survey Verification Performed:					
Master Calibration					
	<u>Density</u>		<u>Far Detector</u>	<u>Near Detector</u>	
Magnesium	1.750	g/cc	6052.27	9575.17	cps
Aluminum	2.690	g/cc	1090.90	5872.16	cps
Spine Angle = 74.07		Density/Spine Ratio = 0.528			
	<u>Size</u>		<u>Reading</u>		
Small Ring	4.50	in	1.80		
Large Ring	13.00	in	1.46		
Before Survey Verification					
	<u>Target</u>		<u>Measured</u>		
		g/cc	g/cc		
		g/cc	g/cc		
		g/cc	g/cc		
After Survey Verification					
	<u>Target</u>		<u>Measured</u>		
		g/cc	g/cc		
		g/cc	g/cc		
		g/cc	g/cc		

Compensated Neutron Calibration Report						
		Serial Number:		853		
		Tool Model:		PSI		
CALIBRATION						
Detector		Readings		Target		Normalization
Short Space		1.00	cps	1.00	cps	1.9000
Long Space		1.00	cps	1.00	cps	2.0000
PRE-SURVEY VERIFICATION						
Detector		Readings		Measured		Target

1)	Short Space Long Space	cps cps	pu	pu
2)	Short Space Long Space	cps cps	pu	
3)	Short Space Long Space	cps cps	pu	
POST-SURVEY VERIFICATION				
	Detector	Readings	Measured	Target
1)	Short Space Long Space	cps cps	pu	pu
2)	Short Space Long Space	cps cps	pu	pu
3)	Short Space Long Space	cps cps	pu	pu
Gamma Ray Calibration Report				
Serial Number:		223		
Tool Model:		PSI		
Performed:		Tue Apr 29 09:44:02 2014		
Calibrator Value:		253.0	GAPI	
Background Reading:		30.0	cps	
Calibrator Reading:		380.0	cps	
Sensitivity:		0.6300	GAPI/cps	