



HIGH RESOLUTION INDUCTION COMPENSATED DENSITY COMPENSATED NEUTRON

Pioneer Energy Services

Company Augustus Energy Resources, LLC
Well Legacy Acres 34-35 1S44W
Field WildCat
County Yuma State Colorado

Location: API #: 05125120870000

799' FSL & 2194' FEL
SWSE

SEC 35 TWP 1S RGE 44W

Permanent Datum GL Elevation 3792
Log Measured From KB
Drilling Measured From KB

Other Services
None

Elevation
K.B. 3798
D.F. 3797
G.L. 3792

Date July 16, 2014

Run Number 1

Depth Driller 2325'

Depth Logger 2317'

Bottom Logged Interval 2317'

Top Log Interval Casing

Casing Driller 480'

Casing Logger 480'

Bit Size 6.25"

Type Fluid in Hole WBM

Density / Viscosity 8.6 / 28

pH / Fluid Loss 8.0 / 8.4

Source of Sample Flowline

Rm @ Meas. Temp 0.27 @ 65 F

Rmf @ Meas. Temp 0.22 @ 65 F

Rmc @ Meas. Temp 0.32 @ 65 F

Source of Rmf / Rmc Calc / Calc

Rm @ BHT 0.17 @ 103 F

Time Circulation Stopped 2000

Time Logger on Bottom 2345

Maximum Recorded Temperature 103 F

Equipment Number 48

Location Ft. Morgan, CO

Recorded By Matt Gill

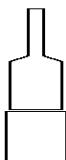
Witnessed By Justin Stone

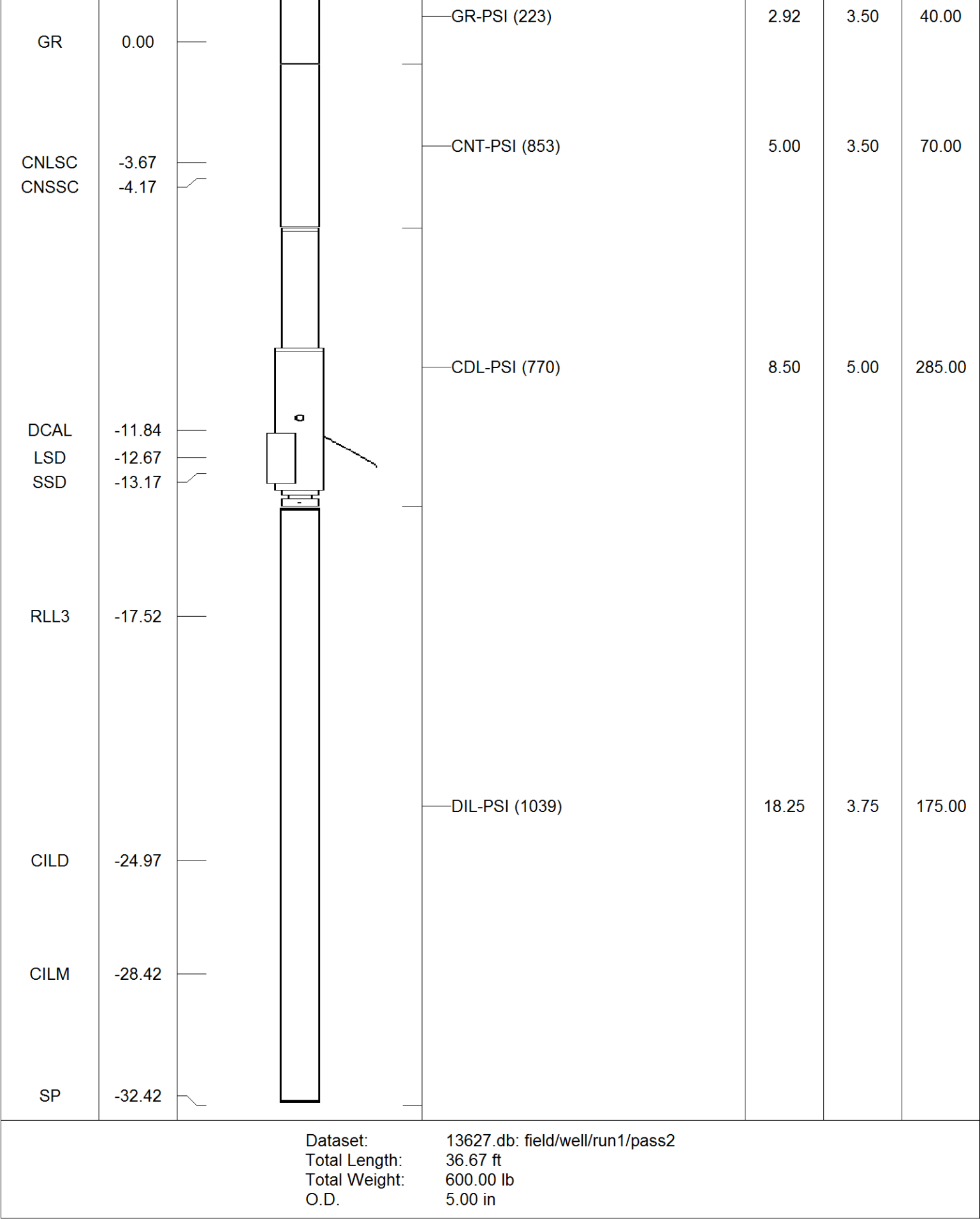
<<< Fold Here >>>

All interpretations are opinions based on inferences from electrical or other measurements and Pioneer Wireline Services, LLC cannot and does not guarantee the accuracy or correctness of any interpretation, and Pioneer Wireline Services, LLC will not be liable or responsible for any loss, costs, damages, or expenses incurred or sustained by anyone resulting from any interpretation made by any of our officers, agents or employees.

Comments

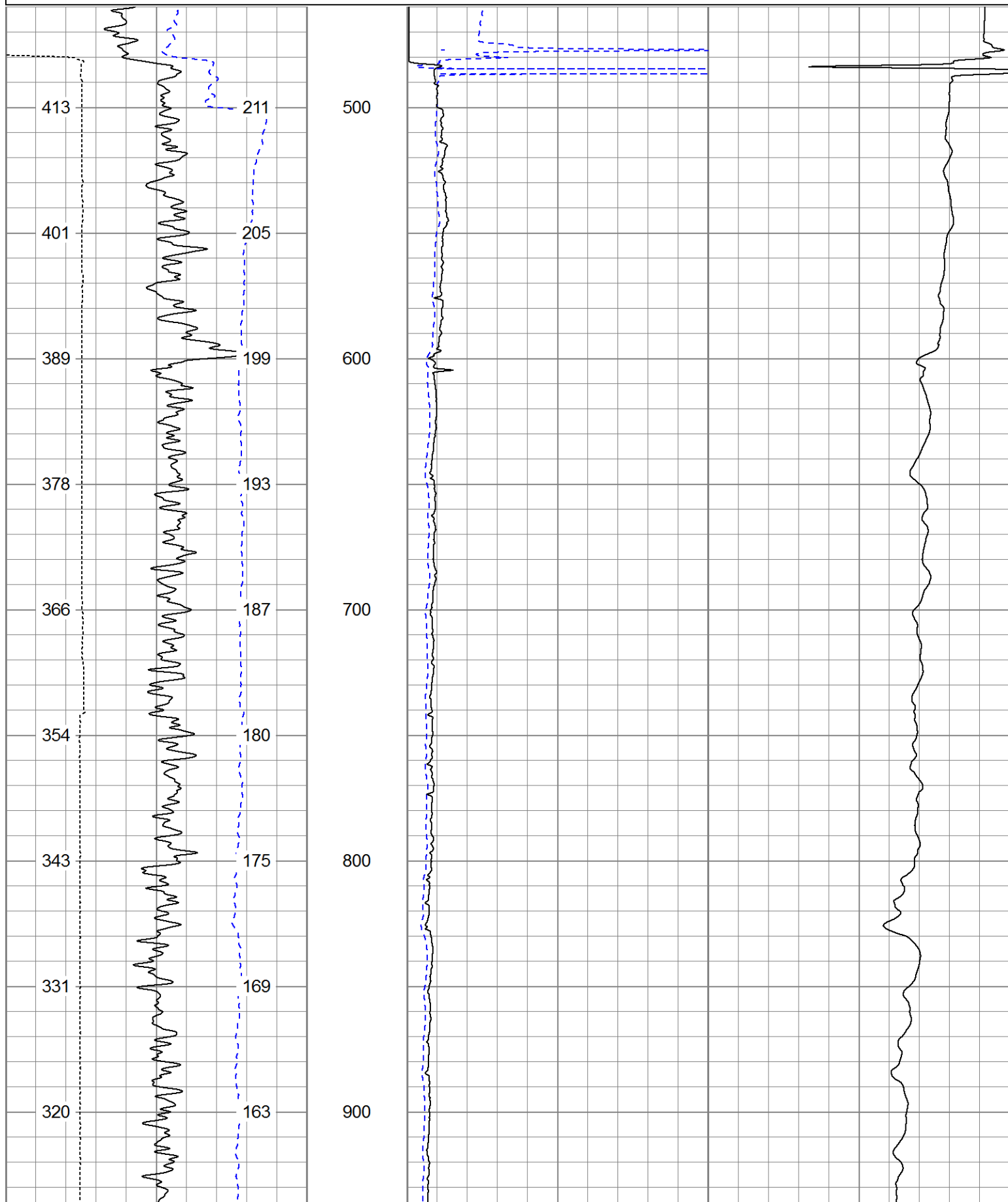
Annular volume calculated for 4.5" casing
Excell Drilling Rig 2
Thank you for using Pioneer Energy Services.

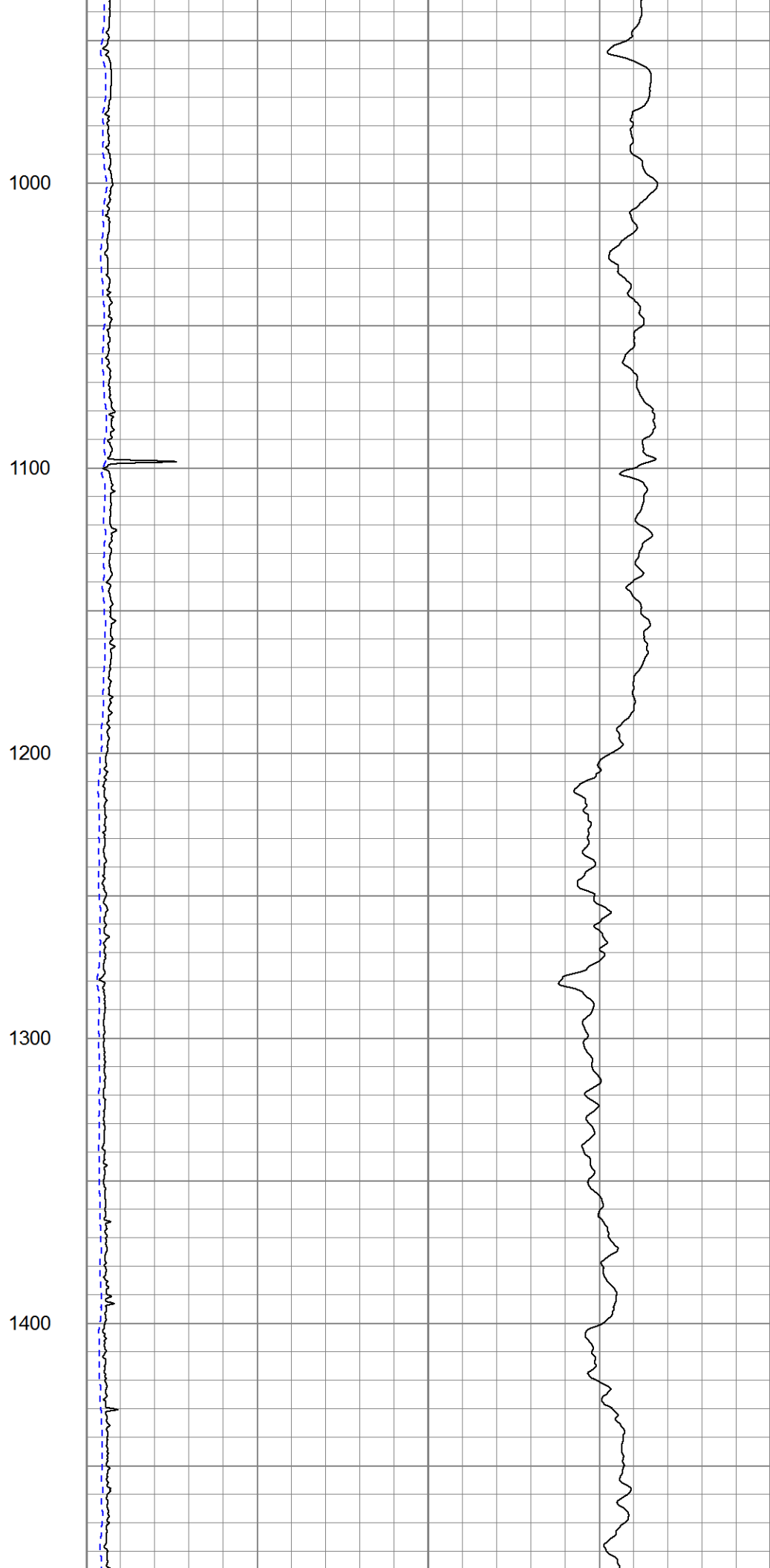
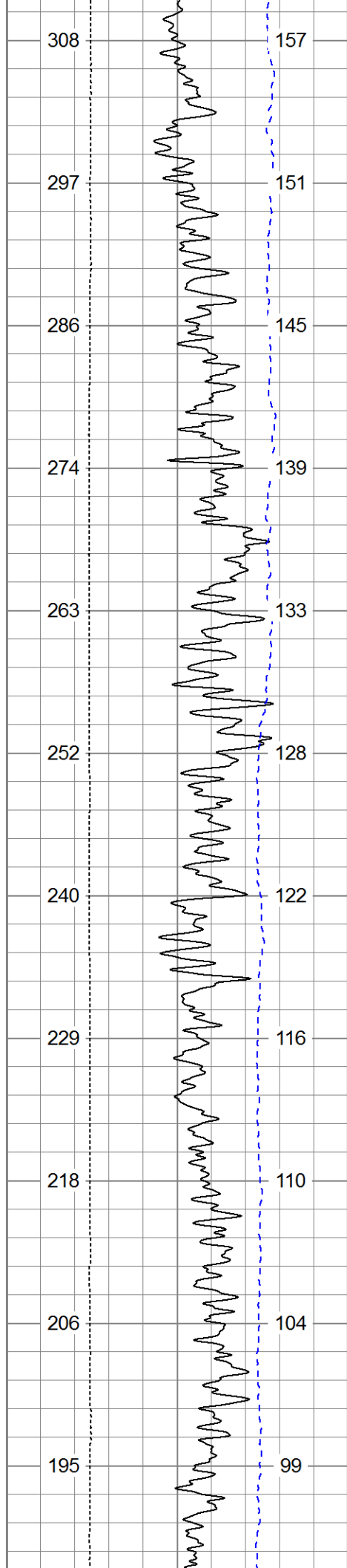
Sensor	Offset (ft)	Schematic	Description	Len (ft)	OD (in)	Wt (lb)
			CHD (~0)	2.00	3.50	30.00

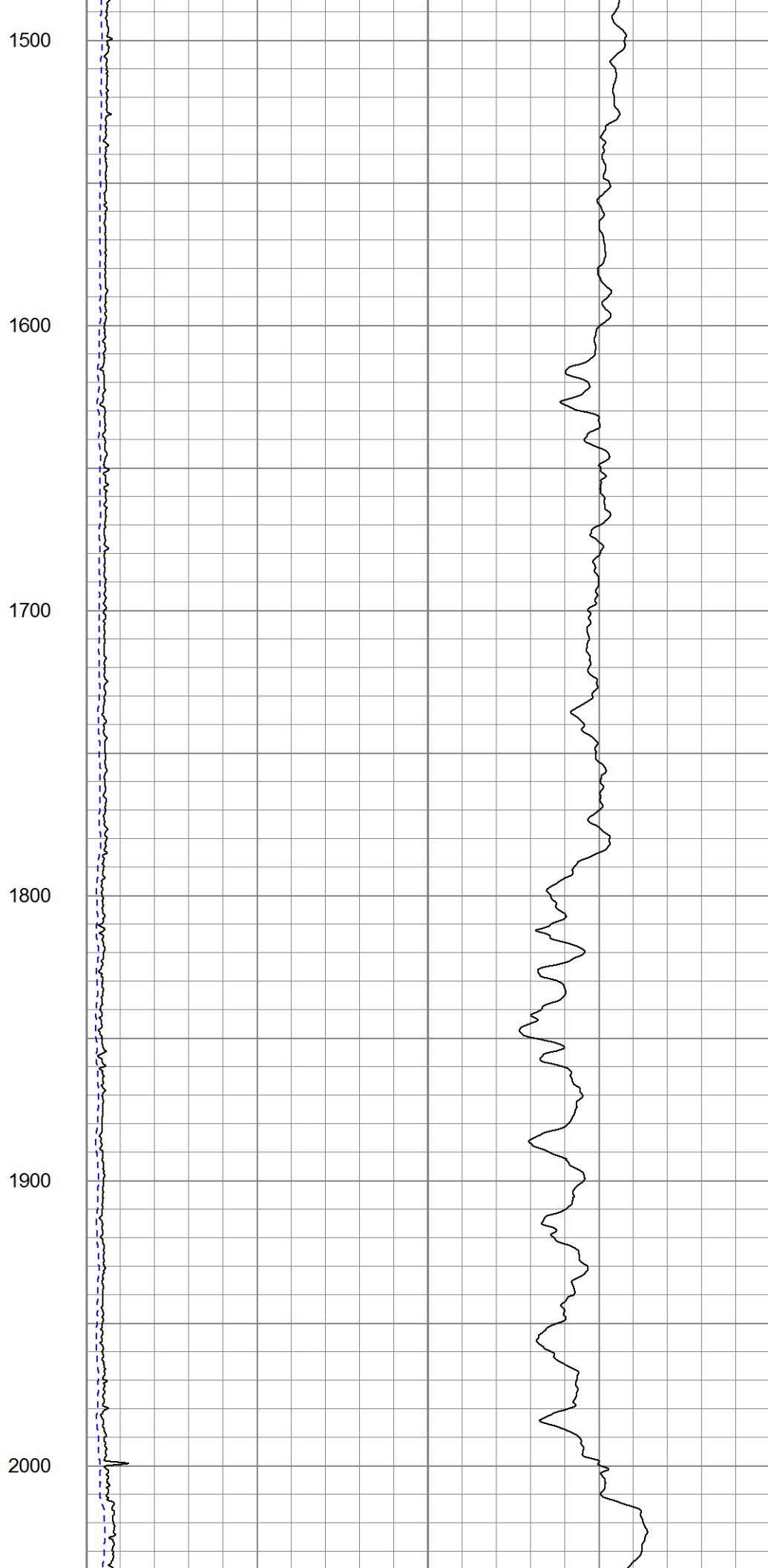
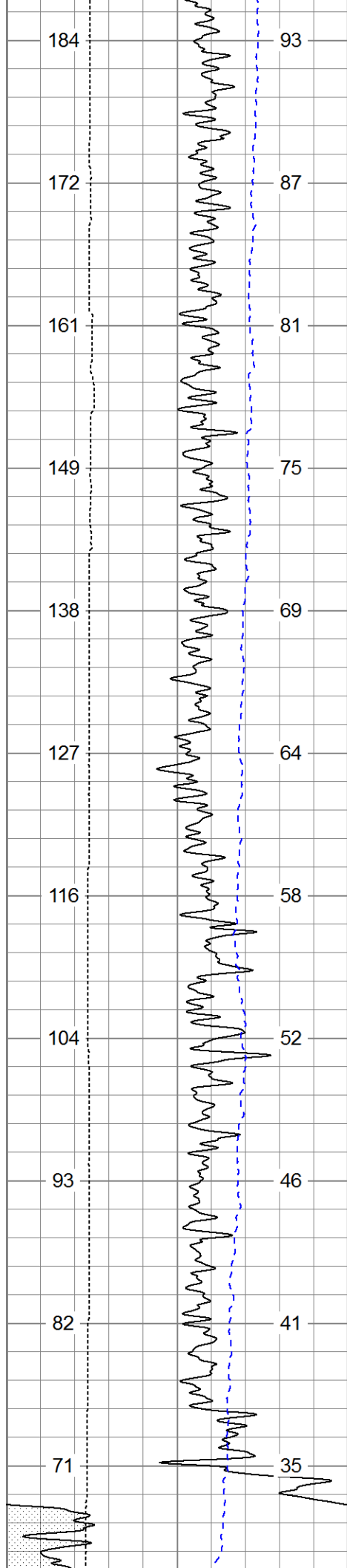


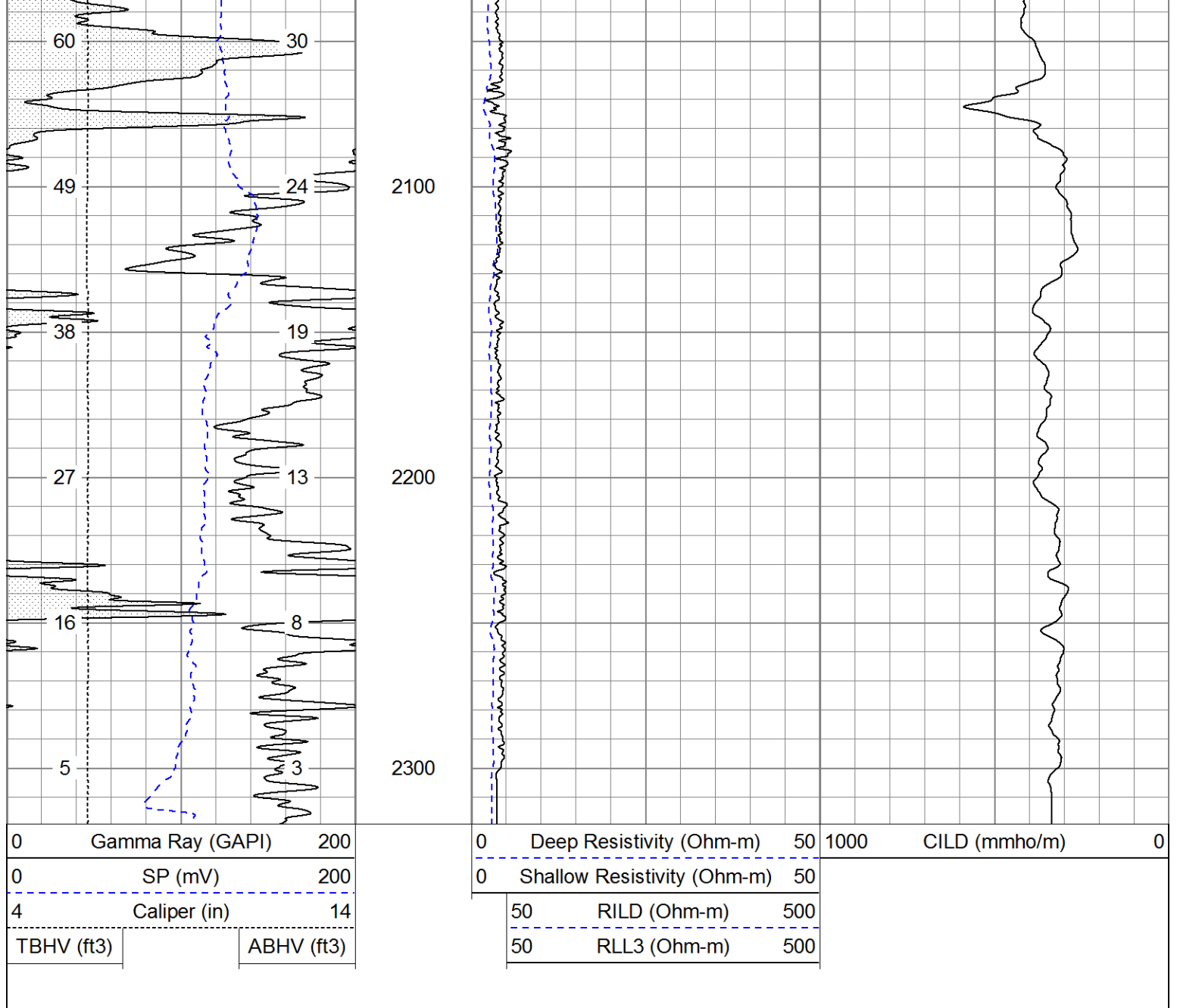
Depth in Feet scaled 1.000

1000	CILD (mmho/m)	0

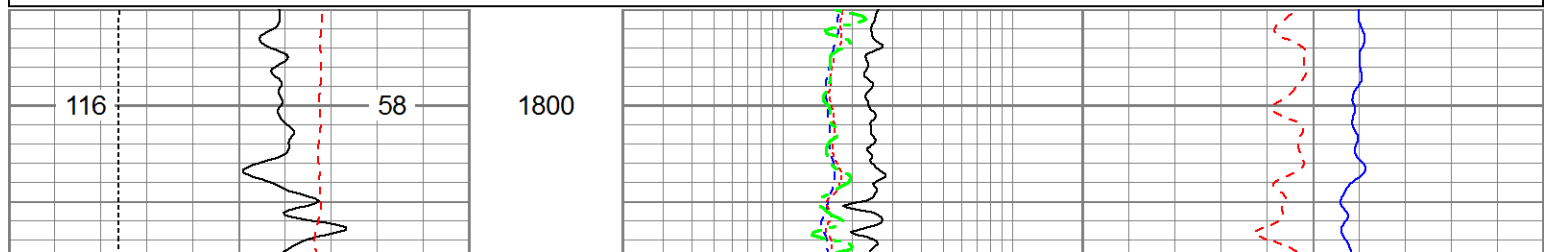
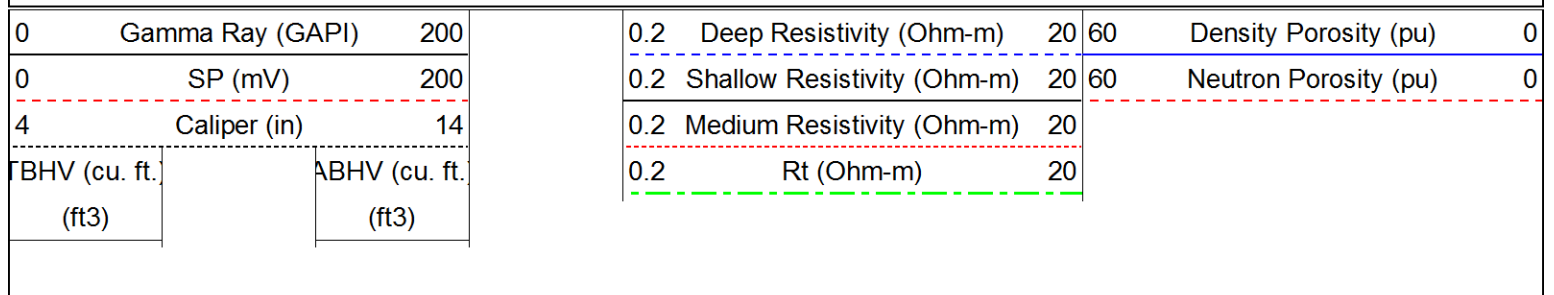


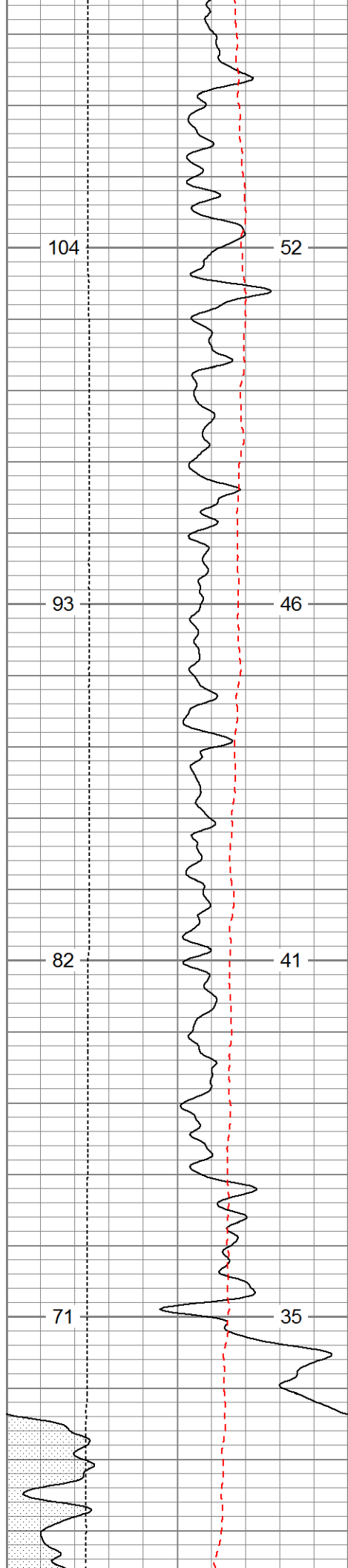






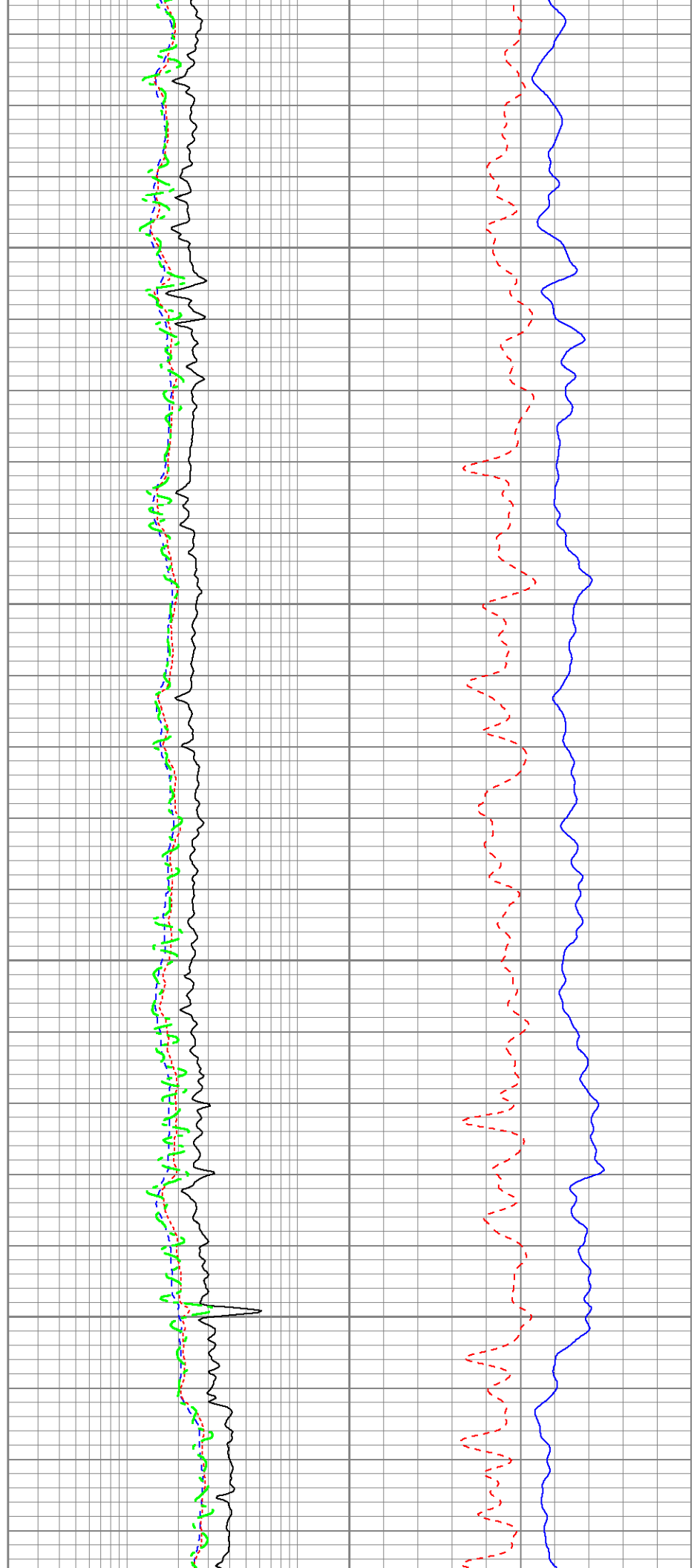
Database File: 13627.db
 Dataset Pathname: final
 Presentation Format: pdce
 Dataset Creation: Wed Jul 16 23:52:18 2014
 Charted by: Depth in Feet scaled 1:240

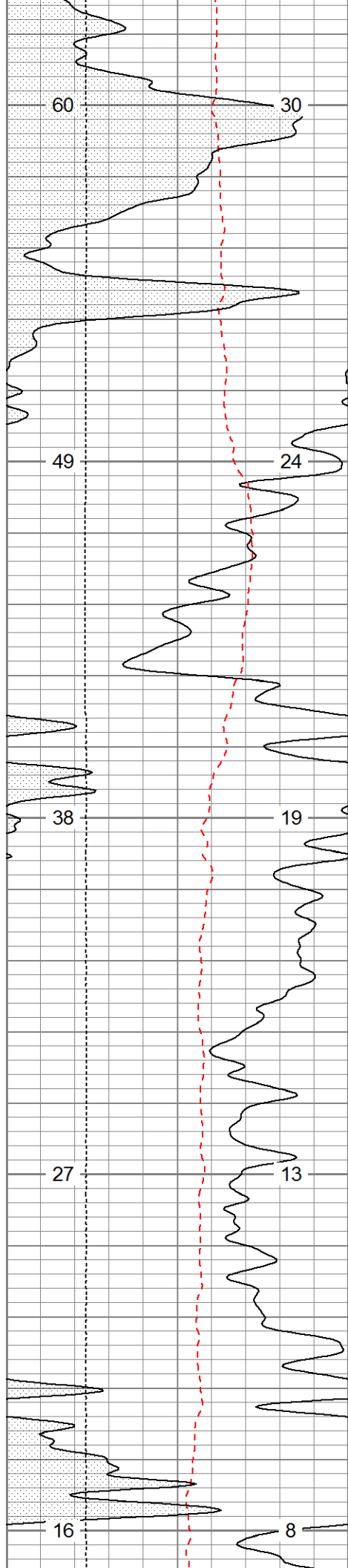




1900

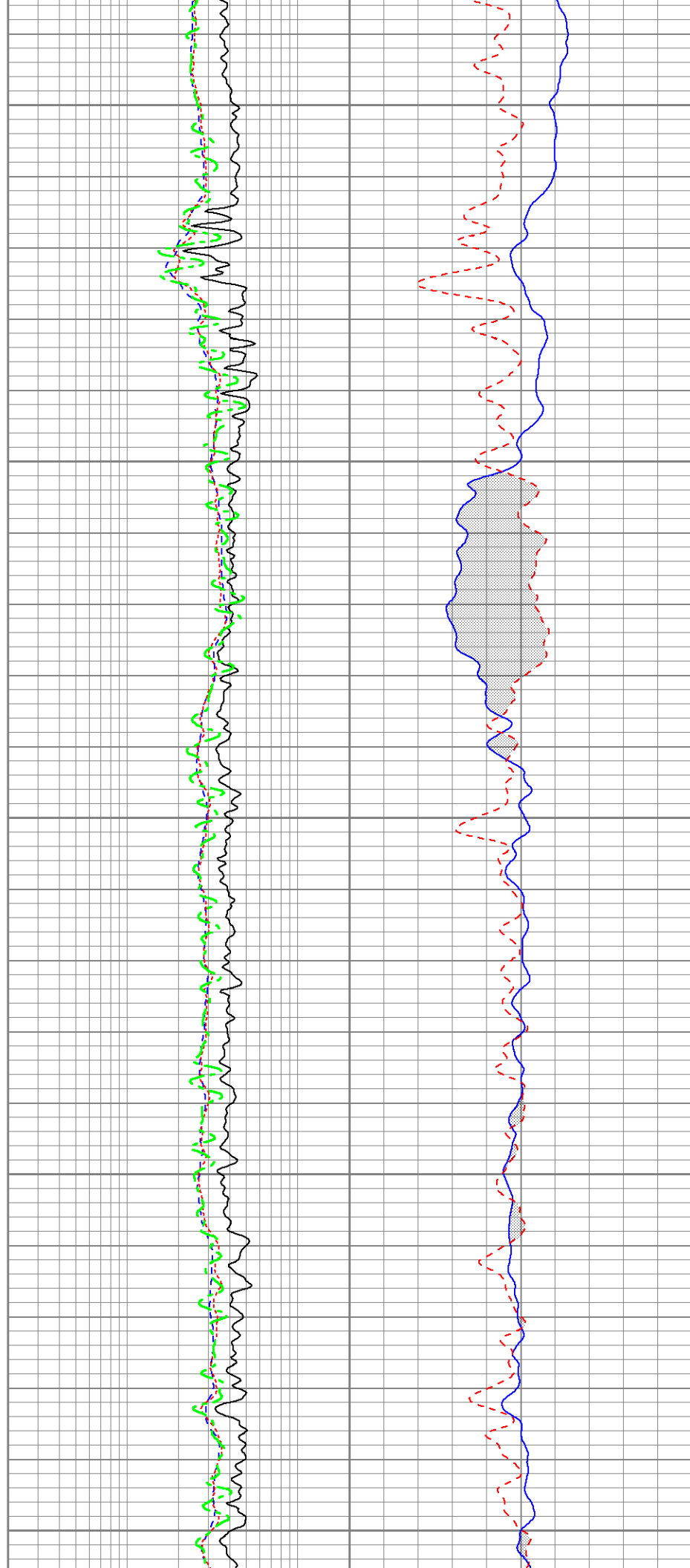
2000

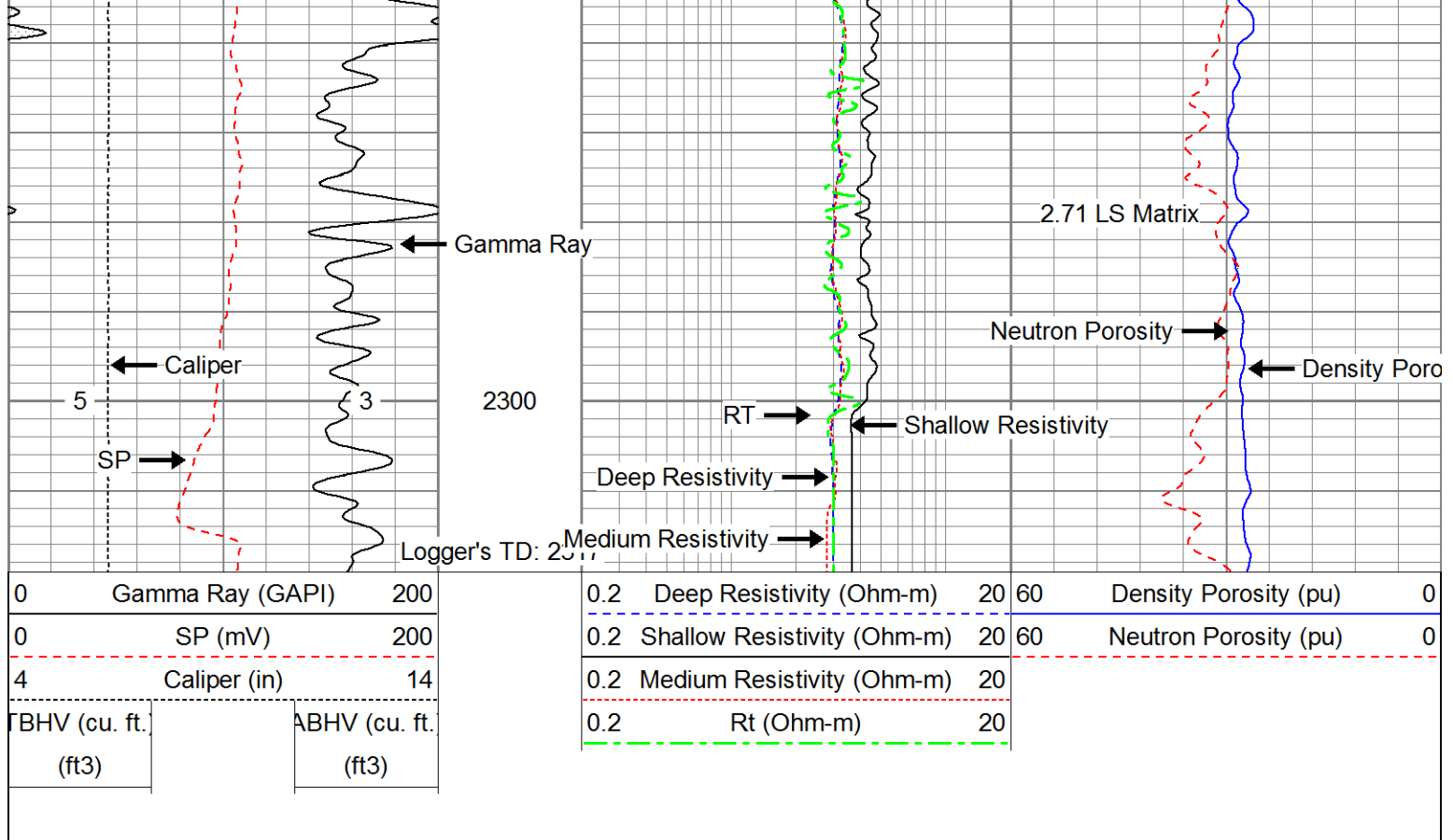




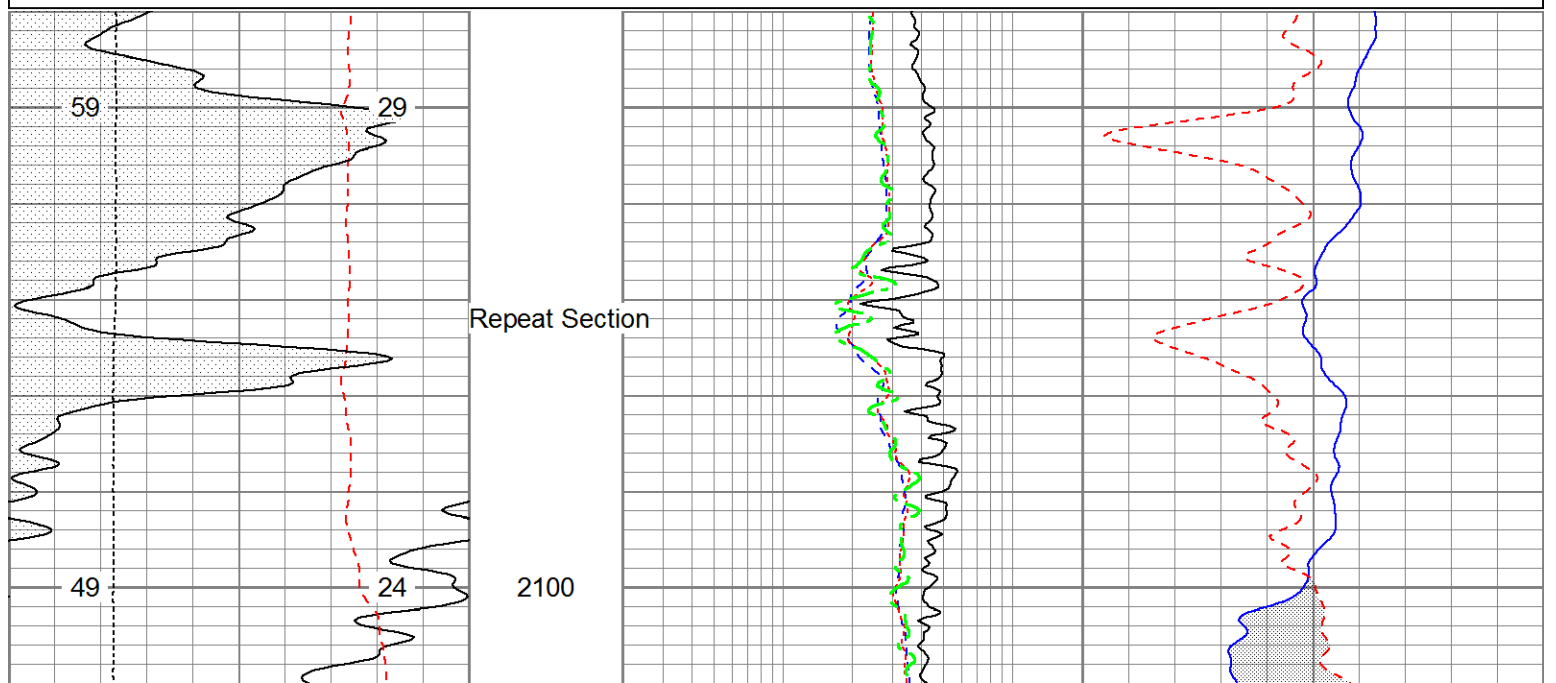
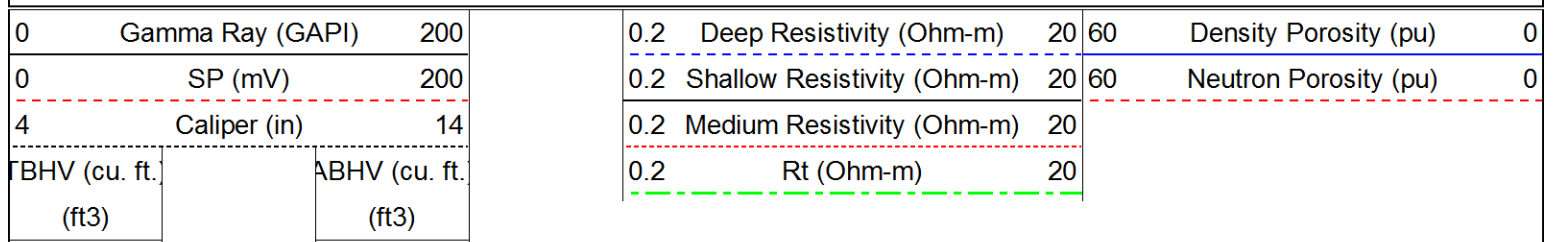
2100

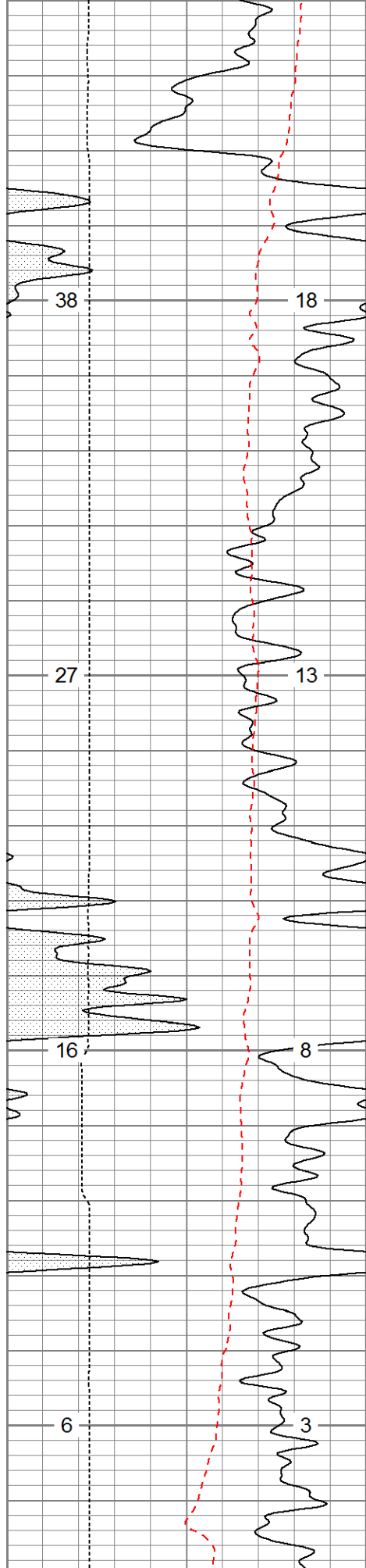
2200





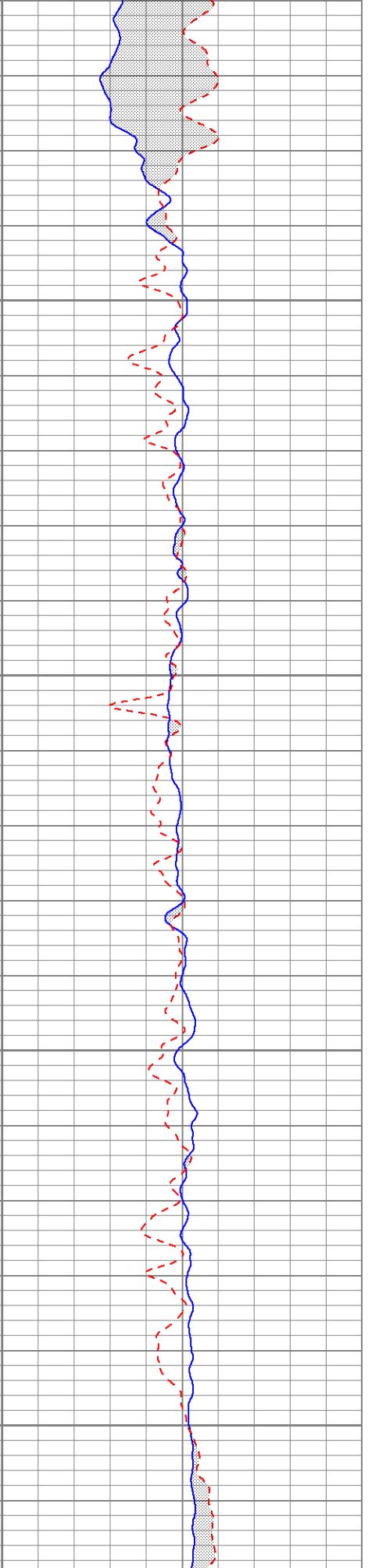
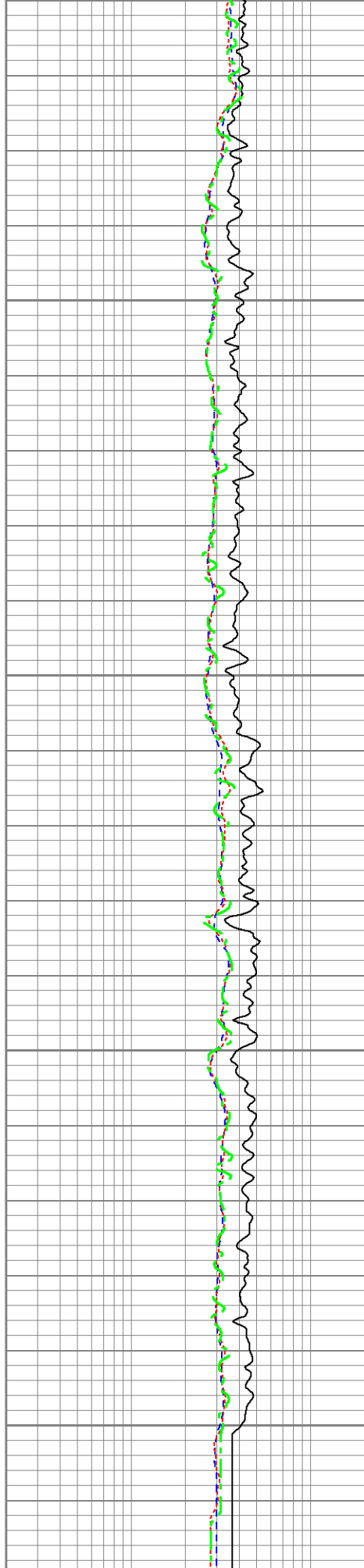
Database File: 13627.db
 Dataset Pathname: pass2.1
 Presentation Format: pdce
 Dataset Creation: Wed Jul 16 23:55:06 2014 by Calc 0
 Charted by: Depth in Feet scaled 1:240





2200

2300



0	Gamma Ray (GAPI)	200
0	SP (mV)	200

0.2	Deep Resistivity (Ohm-m)	20	60	Density Porosity (pu)	0
0.2	Shallow Resistivity (Ohm-m)	20	60	Neutron Porosity (pu)	0

4	Caliper (in)	14	0.2	Medium Resistivity (Ohm-m)	20
BHV (cu. ft.)		ABHV (cu. ft.)	0.2	Rt (Ohm-m)	20
(ft3)		(ft3)			

Calibration Report																																							
Database File:		13627.db																																					
Dataset Pathname:		pass2.1																																					
Dataset Creation:		Wed Jul 16 23:55:06 2014 by Calc 0																																					
Dual Induction Calibration Report																																							
Serial-Model:		1039-PSI																																					
Surface Cal Performed:																																							
<table><tr><td colspan="3">Readings</td><td colspan="3">References</td><td colspan="2">Results</td></tr><tr><td>Loop:</td><td>Air</td><td>Loop</td><td>Air</td><td>Loop</td><td></td><td>m</td><td>b</td></tr><tr><td>Deep</td><td>0.000</td><td>1.000</td><td>0.000</td><td>1.000</td><td>mmho/m</td><td>0.585</td><td>-45.000</td></tr><tr><td>Medium</td><td>0.000</td><td>1.000</td><td>0.000</td><td>1.000</td><td>mmho/m</td><td>0.470</td><td>-40.000</td></tr></table>								Readings			References			Results		Loop:	Air	Loop	Air	Loop		m	b	Deep	0.000	1.000	0.000	1.000	mmho/m	0.585	-45.000	Medium	0.000	1.000	0.000	1.000	mmho/m	0.470	-40.000
Readings			References			Results																																	
Loop:	Air	Loop	Air	Loop		m	b																																
Deep	0.000	1.000	0.000	1.000	mmho/m	0.585	-45.000																																
Medium	0.000	1.000	0.000	1.000	mmho/m	0.470	-40.000																																
Compensated Density Calibration Report																																							
Serial-Model:		770-PSI																																					
Source / Verifier:		4400 / PSI																																					
Master Calibration Performed:		Wed Jun 04 12:13:48 2014																																					
Before Survey Verification Performed:																																							
After Survey Verification Performed:																																							
Master Calibration																																							
		Density		Far Detector		Near Detector																																	
Magnesium		1.750	g/cc	6052.27		9575.17	cps																																
Aluminum		2.690	g/cc	1090.90		5872.16	cps																																
		Spine Angle = 74.07		Density/Spine Ratio = 0.528																																			
		Size		Reading																																			
Small Ring		4.50	in	1.80																																			
Large Ring		13.00	in	1.46																																			
Before Survey Verification																																							
		Target		Measured																																			
		g/cc		g/cc																																			
		g/cc		g/cc																																			
		g/cc		g/cc																																			
After Survey Verification																																							
		Target		Measured																																			
		g/cc		g/cc																																			
		g/cc		g/cc																																			
		g/cc		g/cc																																			
Compensated Neutron Calibration Report																																							
Serial Number:		853																																					

CALIBRATION

Detector	Readings		Target		Normalization
Short Space	1.00	cps	1.00	cps	1.9000
Long Space	1.00	cps	1.00	cps	2.0000

PRE-SURVEY VERIFICATION

	Detector	Readings		Measured	Target
1)	Short Space		cps		
	Long Space		cps	pu	pu
2)	Short Space		cps		
	Long Space		cps	pu	
3)	Short Space		cps		
	Long Space		cps	pu	

POST-SURVEY VERIFICATION

	Detector	Readings		Measured	Target
1)	Short Space		cps		
	Long Space		cps	pu	pu
2)	Short Space		cps		
	Long Space		cps	pu	pu
3)	Short Space		cps		
	Long Space		cps	pu	pu

Gamma Ray Calibration Report

Serial Number:	223	
Tool Model:	PSI	
Performed:	Tue Apr 29 09:44:02 2014	
Calibrator Value:	253.0	GAPI
Background Reading:	30.0	cps
Calibrator Reading:	380.0	cps
Sensitivity:	0.6300	GAPI/cps