
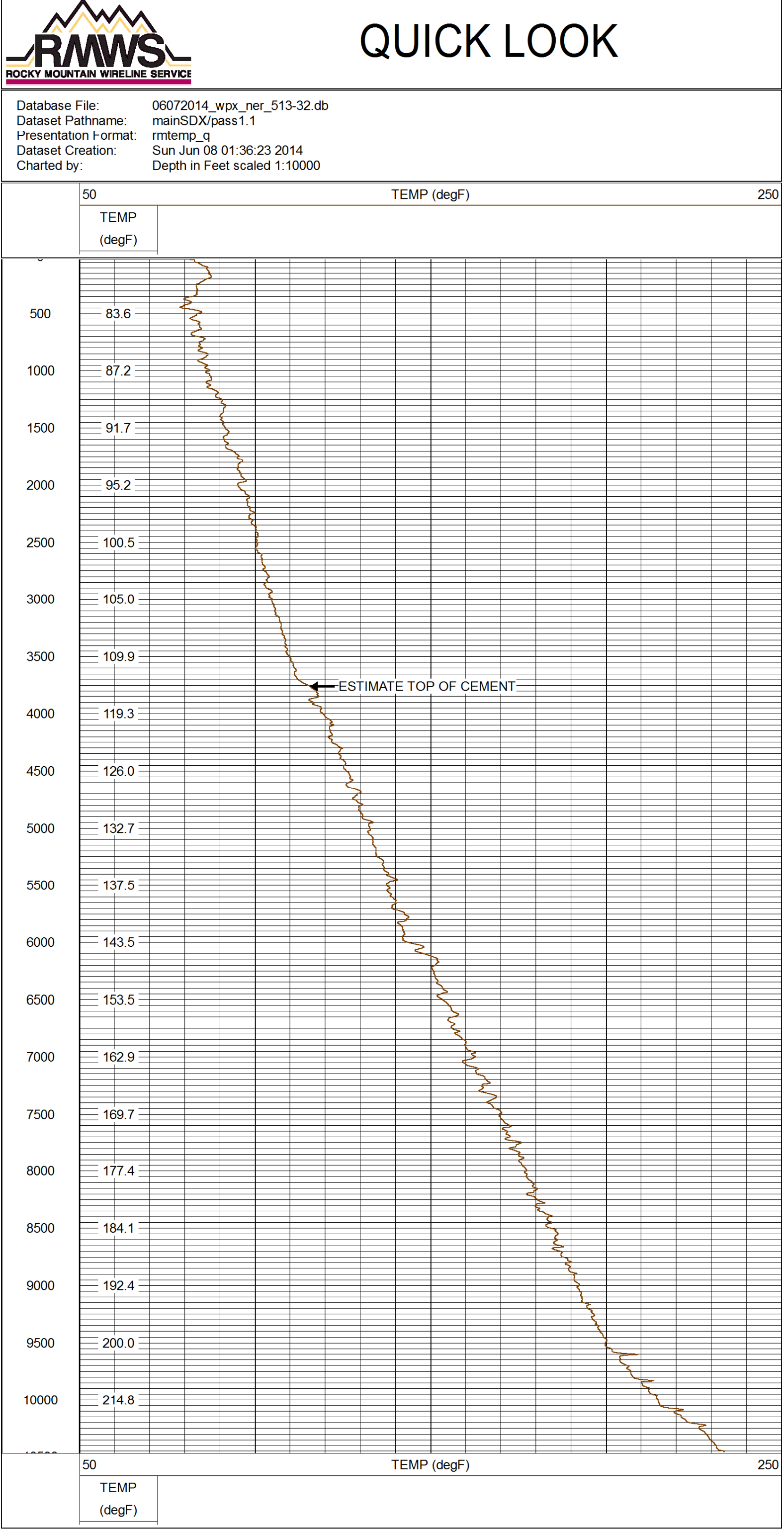




| | | | | | | | | | | | | | | | | | | | |
|--|--|--|--|--|--|--|--|--|--|--|--|--|--|--|--|--|--|--|--|
|  | | | | | | | | | | TEMPERATURE LOG CCL | | | | | | | | | |
| Company WPX ENERGY | | | | | | | | | | | | | | | | | | | |
| Well NER 513-32 | | | | | | | | | | | | | | | | | | | |
| Field RULISON | | | | | | | | | | | | | | | | | | | |
| County GARFIELD | | | | | | | | | | State COLORADO | | | | | | | | | |
| Location: | | | | | | | | | | API # : 05-045-21765-00 SHL: 0161' FWL & 2596' FWL BHL: 1482' FSL & 0653' FEL | | | | | | | | | |
| | | | | | | | | | | Other Services | | | | | | | | | |
| Permanent Datum Log Measured From Drilling Measured From | | | | | | | | | | SEC 5 TWP 7S RGE 93W G.L. K.B. KB. Elevation Ft Above PD 26' K B. 7629' D.F. 7628' G.L. 7603' | | | | | | | | | |
| Date | | | | | | | | | | 06-07-2014 | | | | | | | | | |
| Run Number | | | | | | | | | | ONE | | | | | | | | | |
| Depth Driller | | | | | | | | | | 10514' | | | | | | | | | |
| Present Depth Driller | | | | | | | | | | NA | | | | | | | | | |
| Depth Logger | | | | | | | | | | 10447' | | | | | | | | | |
| Bottom Logged Interval | | | | | | | | | | 10447' | | | | | | | | | |
| Top Log Interval | | | | | | | | | | SURFACE | | | | | | | | | |
| Fluid Level | | | | | | | | | | FULL | | | | | | | | | |
| Type Fluid | | | | | | | | | | WATER | | | | | | | | | |
| Max. Recorded Temp. | | | | | | | | | | 233.3° F | | | | | | | | | |
| Estimated Cement Top | | | | | | | | | | 3750' | | | | | | | | | |
| Equipment Number | | | | | | | | | | 219 | | | | | | | | | |
| Location | | | | | | | | | | GRAND JCT. | | | | | | | | | |
| Recorded By | | | | | | | | | | FERNANDEZ | | | | | | | | | |
| Witnessed By | | | | | | | | | | MR. HARTL | | | | | | | | | |
| Borehole Record | | | | | | | | | | Casing Record | | | | | | | | | |
| Run Number | | | | | | | | | | Bit From To | | | | | | | | | |
| ONE | | | | | | | | | | 9.625" 32.3# SURFACE 1153' | | | | | | | | | |
| TWO | | | | | | | | | | 4.5" 11.6# SURFACE 10514' | | | | | | | | | |
| | | | | | | | | | | | | | | | | | | | |
| | | | | | | | | | | | | | | | | | | | |


<<< Fold Here >>>

| | | | | | | | |
|--|--|--|--|--|--|--|--|
| <<< Fold Here >>> | | | | | | | |
| All interpretations are opinions based on inferences from electrical or other measurements and we cannot and do not guarantee the accuracy or correctness of any interpretation, and we shall not, except in the case of gross or willful negligence on our part, be liable or responsible for any loss, costs, damages, or expenses incurred or sustained by anyone resulting from any interpretation made by any of our officers, agents or employees. These interpretations are also subject to our general terms and conditions set out in our current Price Schedule. | | | | | | | |
| WARRIOR 7.0 SOFTWARE - Comments | | | | | | | |
| <p align="center">NOTE: THERE WAS NO LOG TO CORRELATE TO.</p> <p align="center">MAX TEMP = 233.3° F</p> <p align="center">SHORT JOINTS = 6974' TO 6994'</p> <p align="center">MAIN PASS 5" = 100'</p> <p align="center">CSG PSI = STATIC</p> | | | | | | | |

| | | | | | |
|--------------------------------|----------|----------------------------|-----------|--------------------------|--|
| Calibration Report | | | | | |
| Database File: | | 06072014_wpx_ner_513-32.db | | | |
| Dataset Pathname: | | mainSDX/pass1.1 | | | |
| Dataset Creation: | | Sun Jun 08 01:36:23 2014 | | | |
| Temperature Calibration Report | | | | | |
| | | Serial Number: | | 10008207 | |
| | | Tool Model: | | 016 | |
| | | Performed: | | Mon Apr 30 16:22:18 2012 | |
| Point # | Reading | | Reference | | |
| 1 | 11649.00 | cps | 65.14 | degF | |
| 2 | 18183.00 | cps | 105.26 | degF | |
| 3 | 29168.00 | cps | 174.16 | degF | |
| 4 | 40750.00 | cps | 246.15 | degF | |
| 5 | 51960.00 | cps | 317.35 | degF | |
| 6 | 57688.00 | cps | 353.34 | degF | |
| 7 | | cps | | degF | |
| 8 | | cps | | degF | |
| 9 | | cps | | degF | |
| 10 | | cps | | degF | |
| Gamma Ray Calibration Report | | | | | |
| Serial Number: | | 10007620 | | | |
| Tool Model: | | 020 | | | |
| Performed: | | Sun Jun 13 13:33:21 1993 | | | |
| Calibrator Value: | | 1.0 | GAPI | | |
| Background Reading: | | 0.0 | cps | | |
| Calibrator Reading: | | 1.0 | cps | | |
| Sensitivity: | | 1.0000 | GAPI/cps | | |



| Sensor | Offset (ft) | Schematic | Description | Len (ft) | OD (in) | Wt (lb) |
|---|-------------|---|--|----------|---------|---------|
| CCL | 3.70 |  | CHD-AES (000001) Cable Head | 1.04 | 1.69 | 2.00 |
| | | | XTU-002 (216414) Crossover Ultrawire Toolbus To Ultralink | 1.58 | 1.69 | 6.50 |
| | | | CCL-028 (1037) CCL UW 3 1/8" SONDEX | 1.61 | 3.13 | 36.00 |
| | | | PGR-020 (10007620) Production Gamma Ray | 1.93 | 1.69 | 9.50 |
| GR | 1.76 | | | | | |
| TEMP | 0.37 |  | PRT-016 (10008207) Platinum Resistance Thermometer | 1.04 | 1.69 | 6.00 |
| TSTAMP | 0.00 | | | | | |
| ITEMPX | 0.00 | | | | | |
| HVOLT | 0.00 | | BUL-006 (000002) Bullnose Terminator | 0.22 | 1.69 | 1.20 |
| Dataset: 06072014_wpx_ner_513-32.db: field/well/mainSDX/pass1.1 Total Length: 7.42 ft Total Weight: 61.20 lb O.D.: 3.13 in | | | | | | |

| | | | |
|--|--|---------|------------|
|  | | Company | WPX ENERGY |
| | | Well | NER 513-32 |
| | | Field | RULISON |
| | | County | GARFIELD |
| | | State | COLORADO |