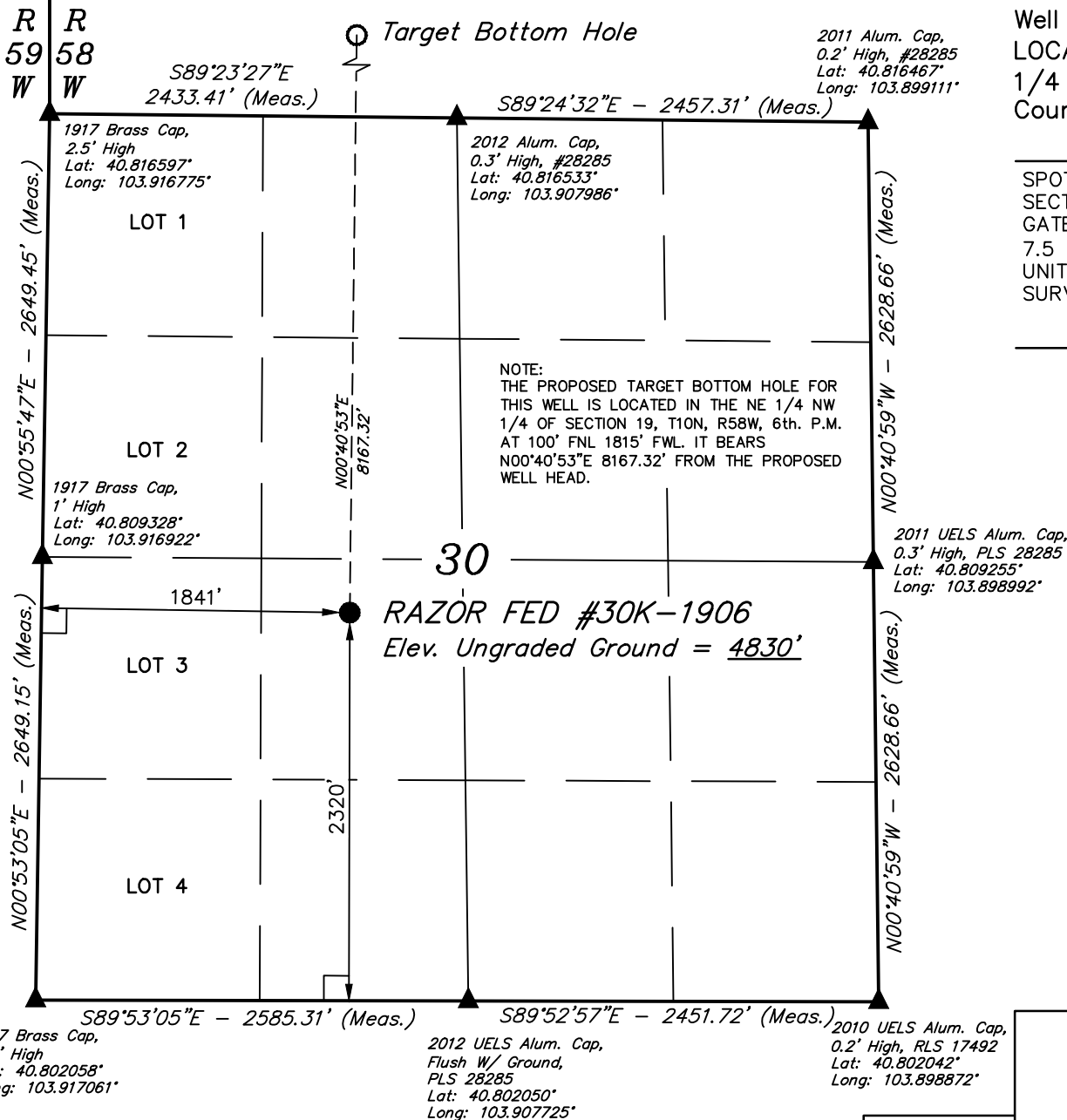


T10N, R58W, 6th. P.M.

WHITING OIL & GAS CORP.



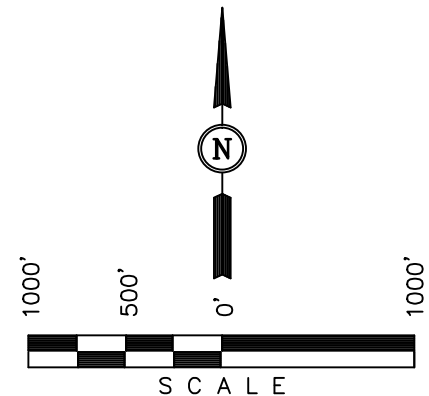
Well location, RAZOR FED #30K-1906, (SURFACE LOCATION), located as shown in the NE 1/4 SW 1/4 of Section 30, T10N, R58W, 6th. P.M., Weld County, Colorado.

BASIS OF ELEVATION

SPOT ELEVATION LOCATED AT THE NORTHEAST CORNER OF SECTION 15, T9N, R58W, 6th P.M. TAKEN FROM THE GATEHOOK SPRING, QUADRANGLE, COLORADO, WELD COUNTY, 7.5 MINUTE QUAD (TOPOGRAPHIC MAP) PUBLISHED BY THE UNITED STATES DEPARTMENT OF THE INTERIOR, GEOLOGICAL SURVEY. SAID ELEVATION IS MARKED AS BEING 4679 FEET.

BASIS OF BEARINGS

BASIS OF BEARINGS IS A G.P.S. OBSERVATION.



CERTIFICATE

THIS IS TO CERTIFY THAT THE ABOVE PLAT WAS PREPARED FROM FIELD NOTES OF ACTUAL SURVEYS MADE BY ME OR UNDER MY SUPERVISION AND THAT THE SAME ARE TRUE AND CORRECT TO THE BEST OF MY KNOWLEDGE AND BELIEF.

REGISTERED LAND SURVEYOR
REGISTRATION NO. 17492
STATE OF COLORADO

LEGEND:

- └─┘ = 90° SYMBOL
- = PROPOSED WELL HEAD.
- ▲ = SECTION CORNERS LOCATED.

PDOP = 1.9

NAD 83 (SURFACE LOCATION)	
LATITUDE	= 40°48'30.31" (40.808419)
LONGITUDE	= 103°54'37.05" (103.910292)
NAD 27 (SURFACE LOCATION)	
LATITUDE	= 40°48'30.36" (40.808433)
LONGITUDE	= 103°54'35.24" (103.909789)

UINTAH ENGINEERING & LAND SURVEYING
85 SOUTH 200 EAST - VERNAL, UTAH 84078
(435) 789-1017

SCALE 1" = 1000'	DATE SURVEYED: 01-10-14	DATE DRAWN: 01-16-14
PARTY DAVE SWANSON C.J. H.K.W.	REFERENCES G.L.O. PLAT	
WEATHER COLD	FILE	WHITING OIL & GAS CORP.

T10N, R58W, 6th. P.M.

WHITING OIL & GAS CORP.

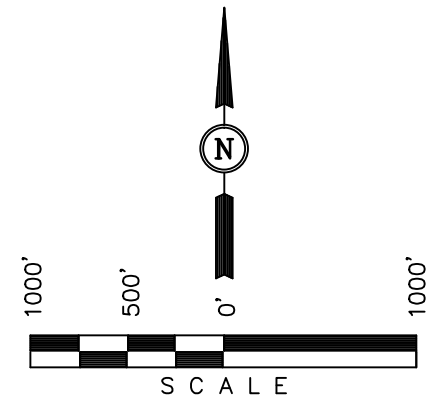
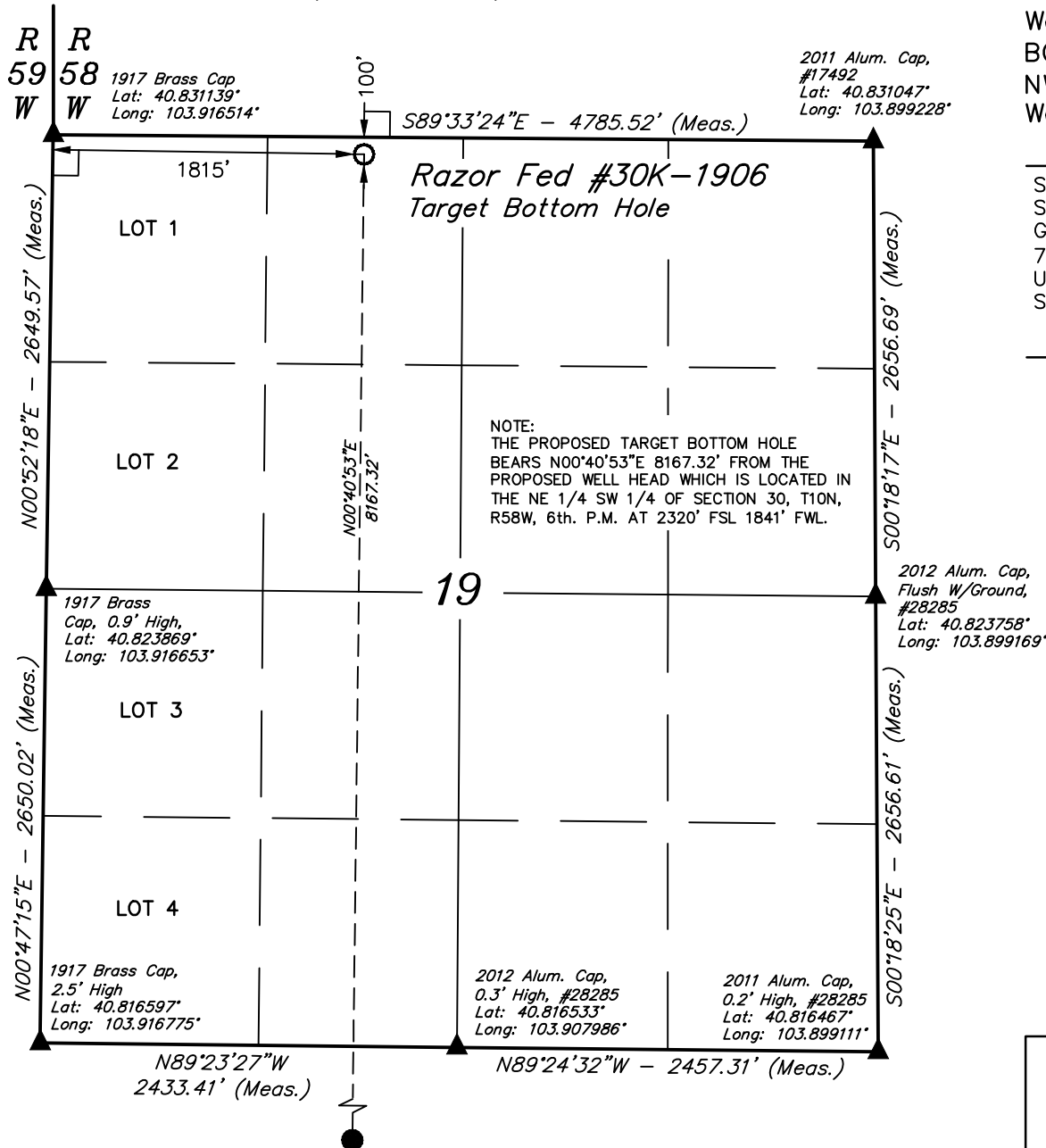
Well location, RAZOR FED #30K-1906, (TARGET BOTTOM HOLE), located as shown in the NE 1/4 NW 1/4 of Section 19, T10N, R58W, 6th. P.M., Weld County, Colorado.

BASIS OF ELEVATION

SPOT ELEVATION LOCATED AT THE NORTHEAST CORNER OF SECTION 15, T9N, R58W, 6th P.M. TAKEN FROM THE GATEHOOK SPRING, QUADRANGLE, COLORADO, WELD COUNTY, 7.5 MINUTE QUAD (TOPOGRAPHIC MAP) PUBLISHED BY THE UNITED STATES DEPARTMENT OF THE INTERIOR, GEOLOGICAL SURVEY. SAID ELEVATION IS MARKED AS BEING 4679 FEET.

BASIS OF BEARINGS

BASIS OF BEARINGS IS A G.P.S. OBSERVATION.



CERTIFICATE

THIS IS TO CERTIFY THAT THE ABOVE PLAT WAS PREPARED FROM FIELD NOTES OF ACTUAL SURVEYS MADE BY ME OR UNDER MY SUPERVISION AND THAT THE SAME ARE TRUE AND CORRECT TO THE BEST OF MY KNOWLEDGE AND BELIEF.

REGISTERED LAND SURVEYOR
 REGISTRATION NO. 17492
 STATE OF COLORADO
 09-21-14

LEGEND:

- └─┘ = 90° SYMBOL
- = PROPOSED WELL HEAD.
- ▲ = SECTION CORNERS LOCATED.

Surface Location

NAD 83 (TARGET BOTTOM HOLE)
LATITUDE = 40°49'50.99" (40.830831)
LONGITUDE = 103°54'35.87" (103.909964)
NAD 27 (TARGET BOTTOM HOLE)
LATITUDE = 40°49'51.04" (40.830844)
LONGITUDE = 103°54'34.06" (103.909461)

UINTAH ENGINEERING & LAND SURVEYING
 85 SOUTH 200 EAST - VERNAL, UTAH 84078
 (435) 789-1017

SCALE 1" = 1000'	DATE SURVEYED: 01-10-14	DATE DRAWN: 01-16-14
PARTY DAVE SWANSON C.J. H.K.W.	REFERENCES G.L.O. PLAT	
WEATHER COLD	FILE WHITING OIL & GAS CORP.	