

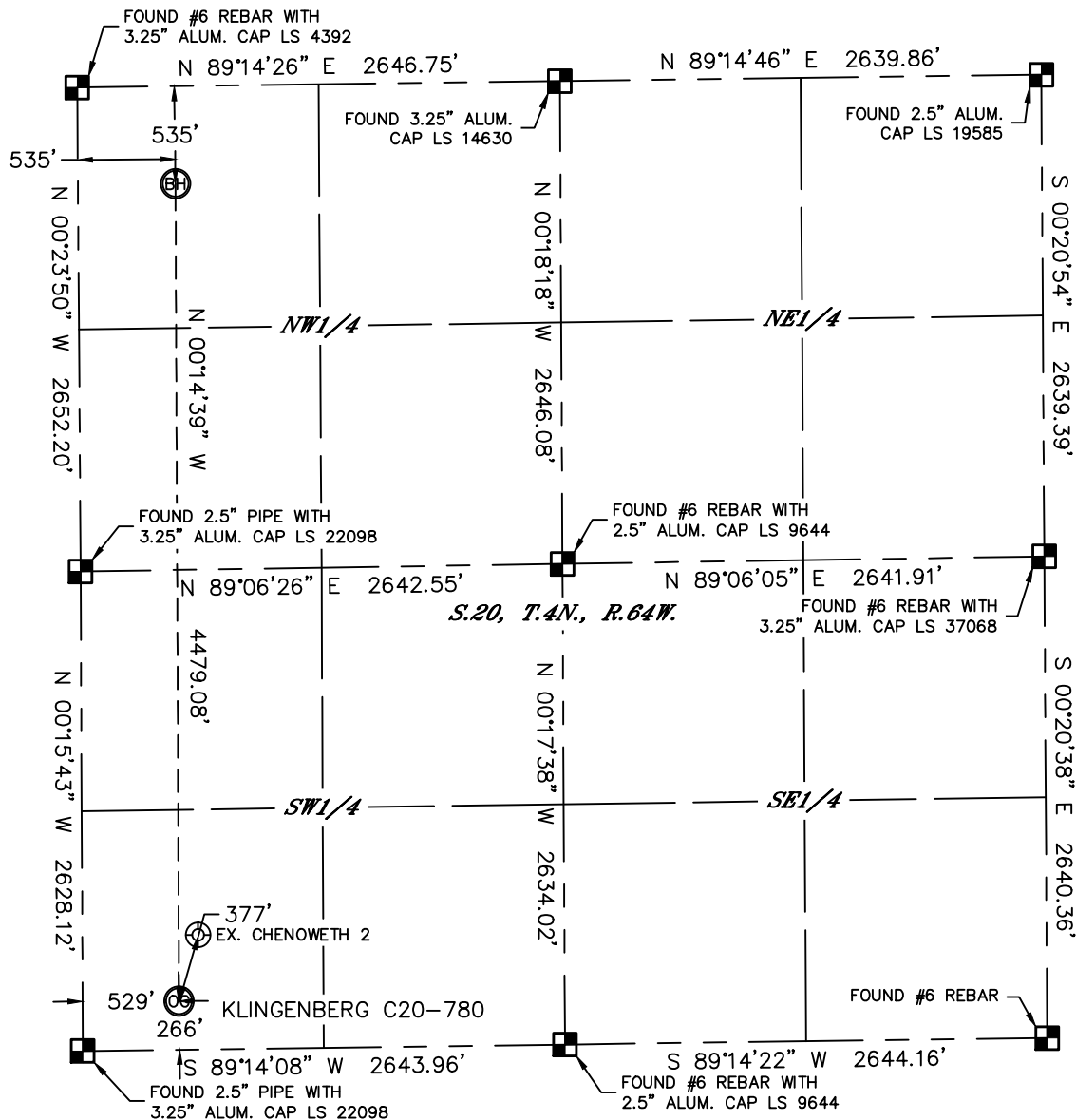


Lat40°, Inc. 1635 Foxtrail Drive, Suite 325 Loveland, CO 970-776-3321

WELL LOCATION CERTIFICATE

THIS MAP DOES NOT REPRESENT A BOUNDARY SURVEY

SECTION: 20
TOWNSHIP: 4N
RANGE: 64W



In accordance with a request from Mike Rodine with Noble Energy Inc.

Lat40°, Inc. has determined the surface location of the KLINGENBERG C20-780 to be 266' from the SOUTH line and 529' from the WEST line and the bottom hole to be 535' from the NORTH line and 535' from the WEST line as measured at right angles from the section lines of Section 20, Township 4 North, Range 64 West of the Sixth Principal Meridian, County of Weld, State of Colorado.

I hereby state that this Well Location Certificate was prepared by me, or under my direct supervision, that the fieldwork was completed on 4/30/2014, for and on behalf of Noble Energy Inc. That this is not a Land Survey Plat or an Improvement Survey Plat, and that it is not to be relied upon for establishment of fence, building, or other future improvement lines.

NOTE:

- 1) Bearings shown are Grid Bearings of the Colorado State Plane Coordinate System, North Zone, North American Datum 1983/2007. The lineal dimensions as contained herein are based upon the "U.S. Survey Foot."
- 2) Ground elevations are based on an observed GPS elevation (NAVD 1988 DATUM).
- 3) IMPROVEMENTS: See LOCATION DRAWING for all visible improvements within 500' of disturbed area.
- 4) SURFACE USE: PASTURE
- 5) INSTRUMENT OPERATOR: BRIAN ROTTINGHAUS
- 6) NEAREST EXISTING WELL: CHENOWETH 2, 377' NE
- NEAREST CULTURAL ITEMS:
BUILDING: ±828' NW
BUILDING UNIT: ±920' NW
HIGH OCCUPANCY BUILDING UNIT: 5280'+
DESIGNATED OUTSIDE ACTIVITY AREA: 5280'+
PUBLIC ROAD: 254' S (COUNTY ROAD 42)
ABOVEGROUND UTILITY: 286' S
RAILROAD: 5280'+
PROPERTY LINE: 266' S

SURFACE LOCATION

LAT: 40.29139°N
LONG: 104.58228°W
PDOP: 1.9
ELEV: 4782'
1/4,1/4: SWSW

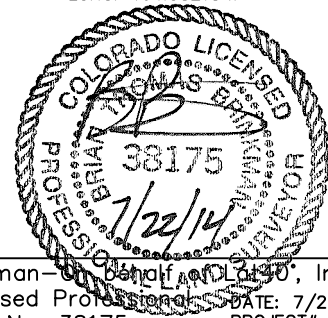
BOTTOM HOLE

LAT: 40.30368°N
LONG: 104.58218°W

LEGEND

- = ALIQUOT MONUMENT AS DESCRIBED
○ = CALCULATED POSITION

Brian T. Brinkman—On behalf of Lat40°, Inc.
Colorado Licensed Professional Land Surveyor No. 38175
DATE: 7/22/2014
PROJECT#: 2014060



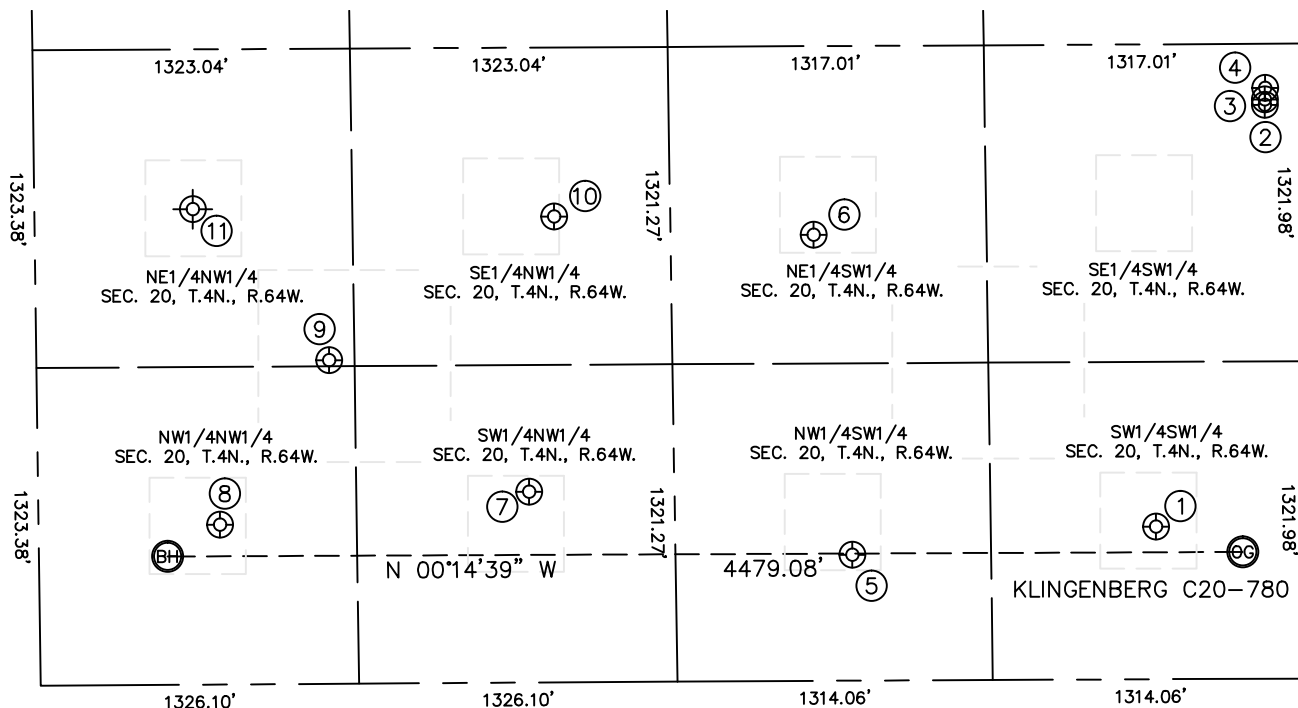


Lat40°, Inc. 1635 Foxtrail Drive, Suite 325 Loveland, CO 970-776-3321

SITE SKETCH

KLINGENBERG C20-780

SECTION: 20
TOWNSHIP: 4N
RANGE: 64W



WELL NO.	WELL NAME	SHL FOOTAGE				SHL LAT°	SHL LONG°	PDOP	ELEV (FT.)	1/4/1/4
1	CHENOWETH 2	627	FSL	635	FWL	40.29238	-104.58189	1.9	4792	SWSW
2	CHENOWETH C20-25D	150	FSL	2390	FWL	40.29108	-104.57561	1.7	4766	SESW
3	BALBOA C20-24D	150	FSL	2412	FWL	40.29108	-104.57553	2.4	4766	SESW
4	JOHNSON C 29-28	147	FSL	2459	FWL	40.29108	-104.57536	1.7	4767	SESW
5	HIGHLAND 12-20	1893	FSL	524	FWL	40.29585	-104.58227	2.3	4769	NWSW
6	HIGHLAND 11-20	2037	FSL	1856	FWL	40.29626	-104.57749	2.3	4750	NESW
7	PREBISH 2	2045	FNL	793	FWL	40.29954	-104.58128	2.6	4786	SWNW
8	AGRICULTURAL PRODUCTS INC 20-414	755	FNL	666	FWL	40.30308	-104.58172	2.4	4782	NWNW
9	PREBISH C20-19	1219	FNL	1347	FWL	40.30181	-104.57928	2.7	4769	NENW
10	API 20-614	2164	FNL	1939	FWL	40.29922	-104.57717	2.8	4755	SENW
11	PREBISH 1	660	FNL	1980	FWL	40.30328	104.57703	NA	4744	NENW



NOTE: THE ABANDONED WELL DATA SHOWN IN RED ABOVE WAS OBTAINED FROM COGCC SCOUT CARDS.

DATE: 7/22/2014
PROJECT#: 2014060