

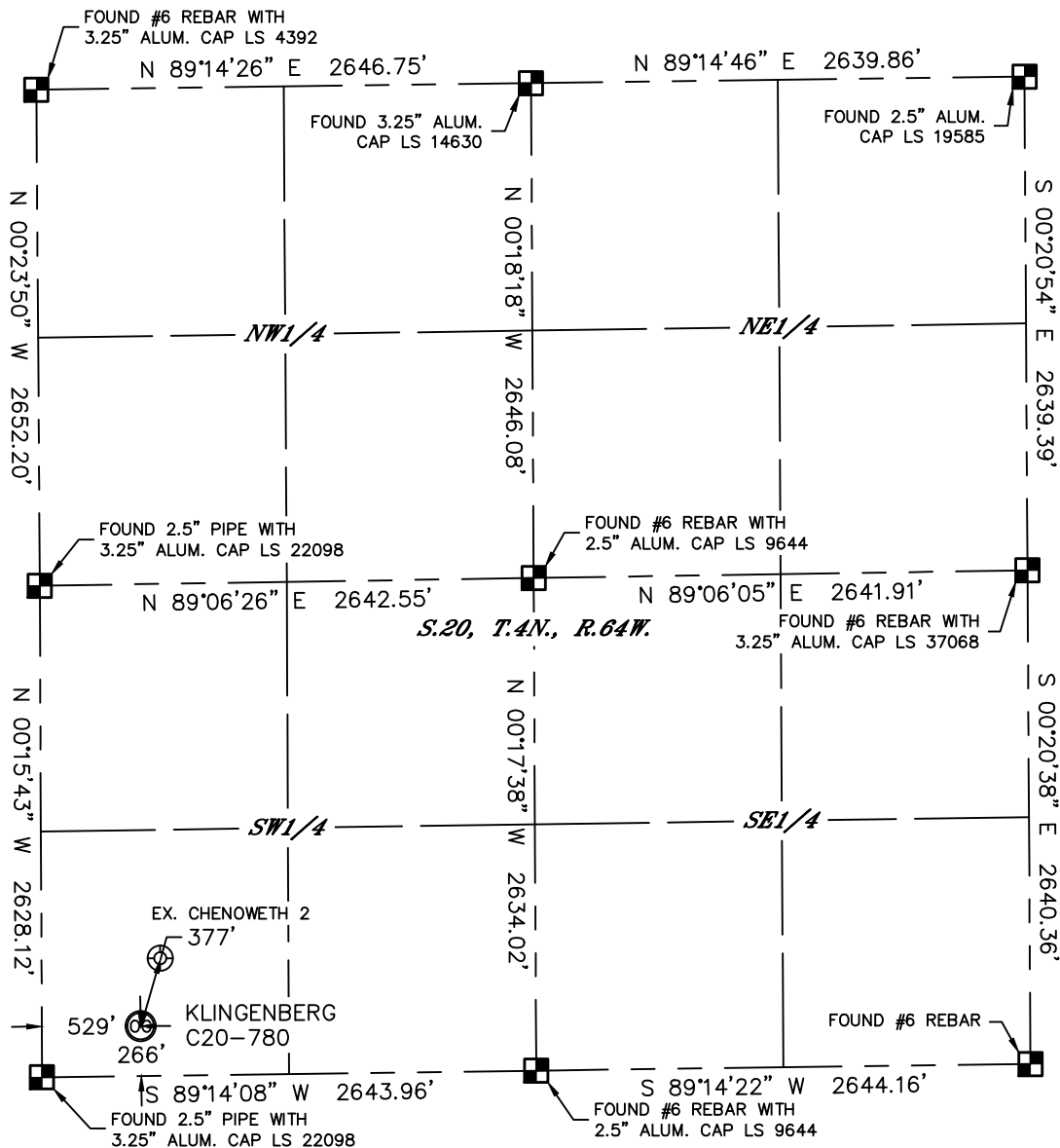


Lat40°, Inc. 1635 Foxtrail Drive, Suite 325 Loveland, CO 970-776-3321

# WELL LOCATION CERTIFICATE

THIS MAP DOES NOT REPRESENT A BOUNDARY SURVEY

SECTION: 20  
TOWNSHIP: 4N  
RANGE: 64W



In accordance with a request from Mike Rodine with Noble Energy Inc. Lat40°, Inc. has determined the surface location of the KLINGENBERG C20-780 to be 266' from the SOUTH line and 529' from the WEST line as measured at right angles from the section lines of Section 20, Township 4 North, Range 64 West of the Sixth Principal Meridian, County of Weld, State of Colorado.

I hereby state that this Well Location Certificate was prepared by me, or under my direct supervision, that the fieldwork was completed on 4/30/2014, for and on behalf of Noble Energy Inc. That this is not a Land Survey Plat or an Improvement Survey Plat, and that it is not to be relied upon for establishment of fence, building, or other future improvement lines.

## NOTE:

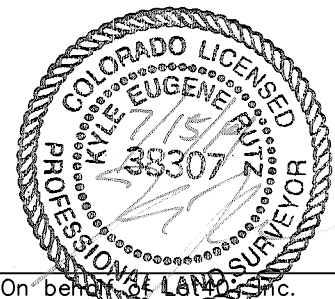
- 1) Bearings shown are Grid Bearings of the Colorado State Plane Coordinate System, North Zone, North American Datum 1983/2007. The lineal dimensions as contained herein are based upon the "U.S. Survey Foot."
- 2) Ground elevations are based on an observed GPS elevation (NAVD 1988 DATUM).
- 3) IMPROVEMENTS: See LOCATION DRAWING for all visible improvements within 500' of disturbed area.
- 4) SURFACE USE: PASTURE
- 5) INSTRUMENT OPERATOR: BRIAN ROTTINGHAUS
- 6) NEAREST EXISTING WELL: CHENOWETH 2, 377' NE
- NEAREST CULTURAL ITEMS:  
BUILDING: ±828' NW  
BUILDING UNIT: ±920' NW  
HIGH OCCUPANCY BUILDING UNIT: 5280'+  
DESIGNATED OUTSIDE ACTIVITY AREA: 5280'+  
PUBLIC ROAD: 254' S (COUNTY ROAD 42)  
ABOVEGROUND UTILITY: 286' S  
RAILROAD: 5280'+  
PROPERTY LINE: 266' S

## SURFACE LOCATION

LAT: 40.29139°N  
LONG: 104.58228°W  
PDOP: 1.9  
ELEV: 4782'  
1/4,1/4: SWSW

## LEGEND

- = ALIQUOT MONUMENT AS DESCRIBED  
○ = CALCULATED POSITION



Kyle E. Rutz—On behalf of Lat40°, Inc.  
Colorado Licensed Professional  
Land Surveyor No. 38307

DATE: 7/15/2014  
PROJECT#: 2014060

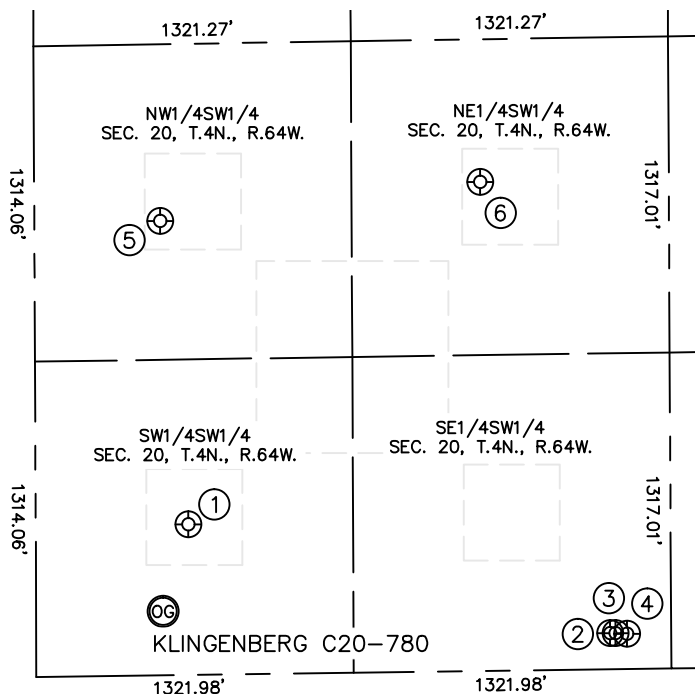


Lat40°, Inc. 1635 Foxtrail Drive, Suite 325 Loveland, CO 970-776-3321

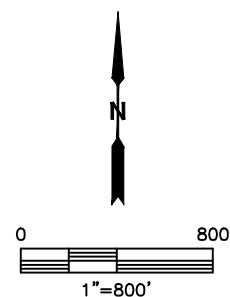
# SITE SKETCH

KLINGENBERG C20-780

SECTION: 20  
TOWNSHIP: 4N  
RANGE: 64W



WELL NO.	WELL NAME	SHL FOOTAGE				SHL LAT°	SHL LONG°	PDOP	ELEV (FT.)	1/4/1/4
1	CHENOWETH 2	627	FSL	635	FWL	40.29238	-104.58189	1.9	4792	SWSW
2	CHENOWETH C20-25D	150	FSL	2390	FWL	40.29108	-104.57561	1.7	4766	SESW
3	BALBOA C20-24D	150	FSL	2412	FWL	40.29108	-104.57553	2.4	4766	SESW
4	JOHNSON C 29-28	147	FSL	2459	FWL	40.29108	-104.57536	1.7	4767	SESW
5	HIGHLAND 12-20	1893	FSL	524	FWL	40.29585	-104.58227	2.3	4769	NWSW
6	HIGHLAND 11-20	2037	FSL	1856	FWL	40.29626	-104.57749	2.3	4750	NESW



DATE: 7/15/2014  
PROJECT#: 2014060