

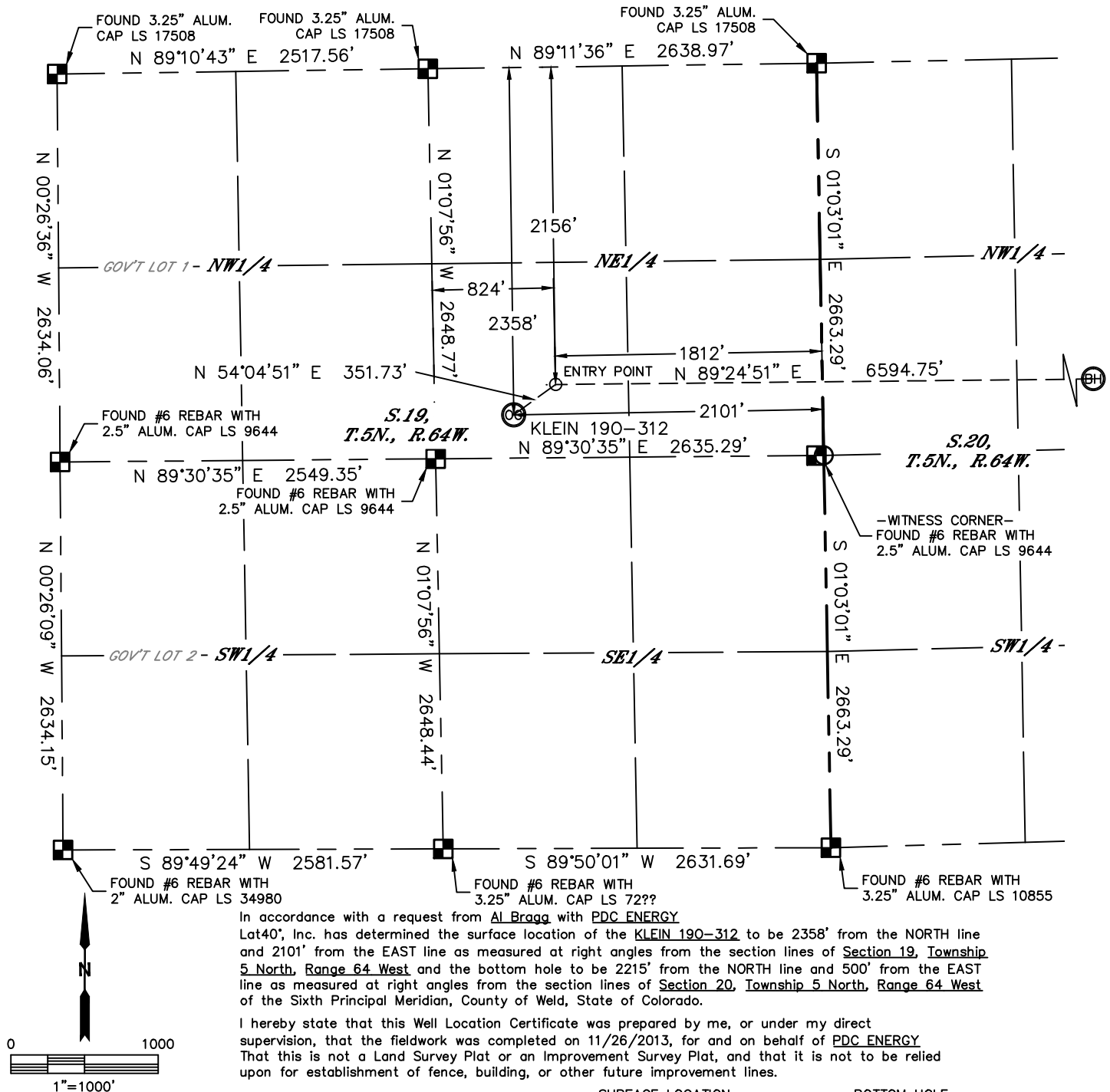


Lat40°, Inc. 1635 Foxtrail Drive, Suite 325 Loveland, CO 970-776-3321

# WELL LOCATION CERTIFICATE

THIS MAP DOES NOT REPRESENT A BOUNDARY SURVEY

SECTION: 19  
TOWNSHIP: 5N  
RANGE: 64W



NOTE:

- 1) Bearings shown are Grid Bearings of the Colorado State Plane Coordinate System, North Zone, North American Datum 1983/2007. The lineal dimensions as contained herein are based upon the "U.S. Survey Foot."
- 2) Ground elevations are based on an observed GPS elevation (NAVD 1988 DATUM).
- 3) IMPROVEMENTS: See LOCATION DRAWING for all visible improvements within 500' of disturbed area.
- 4) SURFACE USE: CROPLAND
- 5) INSTRUMENT OPERATOR: BRIAN ROTTINGHAUS
- 6) NEAREST CULTURAL ITEMS:  
BUILDING: ±1965' NE  
BUILDING UNIT: ±2205' NW  
HIGH OCCUPANCY BUILDING UNIT: 5280'+  
DESIGNATED OUTSIDE ACTIVITY AREA: 5280'+  
PUBLIC ROAD: (COUNTY ROAD 54.5) 2034' SE  
ABOVEGROUND UTILITY: 995' NW  
RAILROAD: ±1504' SE  
PROPERTY LINE: 293' S

**SURFACE LOCATION**  
LAT: 40.38541°N  
LONG: 104.59085°W  
PDOP: 1.9  
ELEV: 4626'  
1/4,1/4: SWNE

**ENTRY POINT**  
LAT: 40.38597°N  
LONG: 104.58982°W  
1/4,1/4: SWNE

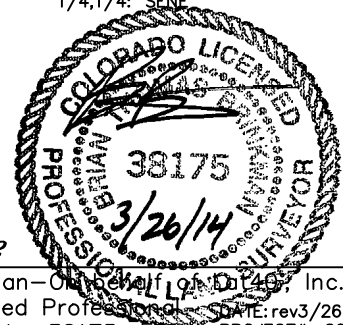
**BOTTOM HOLE**  
LAT: 40.38596°N  
LONG: 104.56615°W  
1/4,1/4: SENE

## LEGEND

- = ALIQUOT MONUMENT AS DESCRIBED
- = CALCULATED POSITION

## SHEET 1 OF 2

Brian T. Brinkman—On Behalf of Lat40°, Inc.  
Colorado Licensed Professional Land Surveyor No. 38175  
DATE: rev3/26/2014  
PROJECT#: 2013130

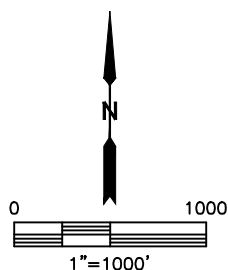
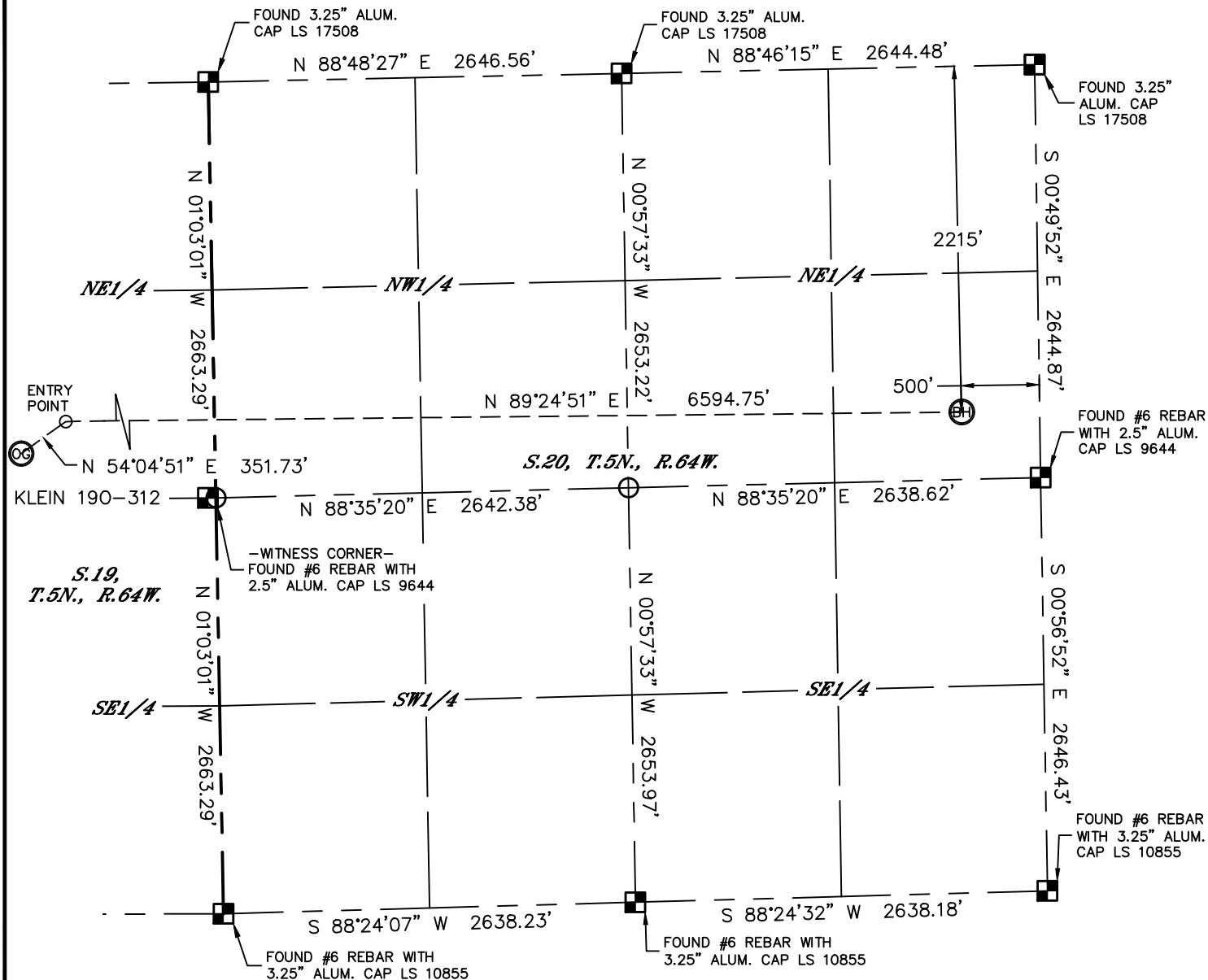


Lat40°, Inc. 1635 Foxtrail Drive, Suite 325 Loveland, CO 970-776-3321


# WELL LOCATION CERTIFICATE

THIS MAP DOES NOT REPRESENT A BOUNDARY SURVEY

SECTION: 19  
TOWNSHIP: 5N  
RANGE: 64W



### LEGEND

-  = ALIQUOT MONUMENT AS DESCRIBED  
 = CALCULATED POSITION

***SHEET 2 OF 2***

Brian T. Brinkman—On behalf of: Day 49, Inc.  
Colorado Licensed Professional Surveyor No. 38175  
DATE: rev3/26  
PROJECT#: 20

DATE: rev3/26/2014  
PROJECT#: 2013130

