

1625 Broadway  
Suite 2000  
Denver, CO 80202  
  
Tel: 303.228.4000  
Fax: 303.228.4280  
www.nobleenergyinc.com



July 31, 2014

Colorado Oil and Gas Conservation Commission  
The Chancery Building  
1120 Lincoln Street, Suite 801  
Denver, CO 80203  
Attn: Mr. Matt Lepore, Director

RE: Higgins D19-720  
Section 19: Township 3 North, Range 64 West, 6th P.M.  
Weld County, Colorado

Dear Director:

Noble Energy, Inc. ("NEI") is planning to drill the captioned boundary well in accordance with the provisions of COGCC Rule 318A.e.

NEI's proposed wellbore spacing unit consists of the E/2E/2 of Sec 19, T3N, R64W, creating a 160-acre wellbore spacing unit for the Niobrara formation. NEI is the only owner within the proposed wellbore spacing unit, therefore NEI hereby attests that no notice letters are required under COGCC Rule 318A(l).e.(6).

Enclosed are copies of the following documents to assist you in your review and approval of NEI's proposed APD for the captioned well:

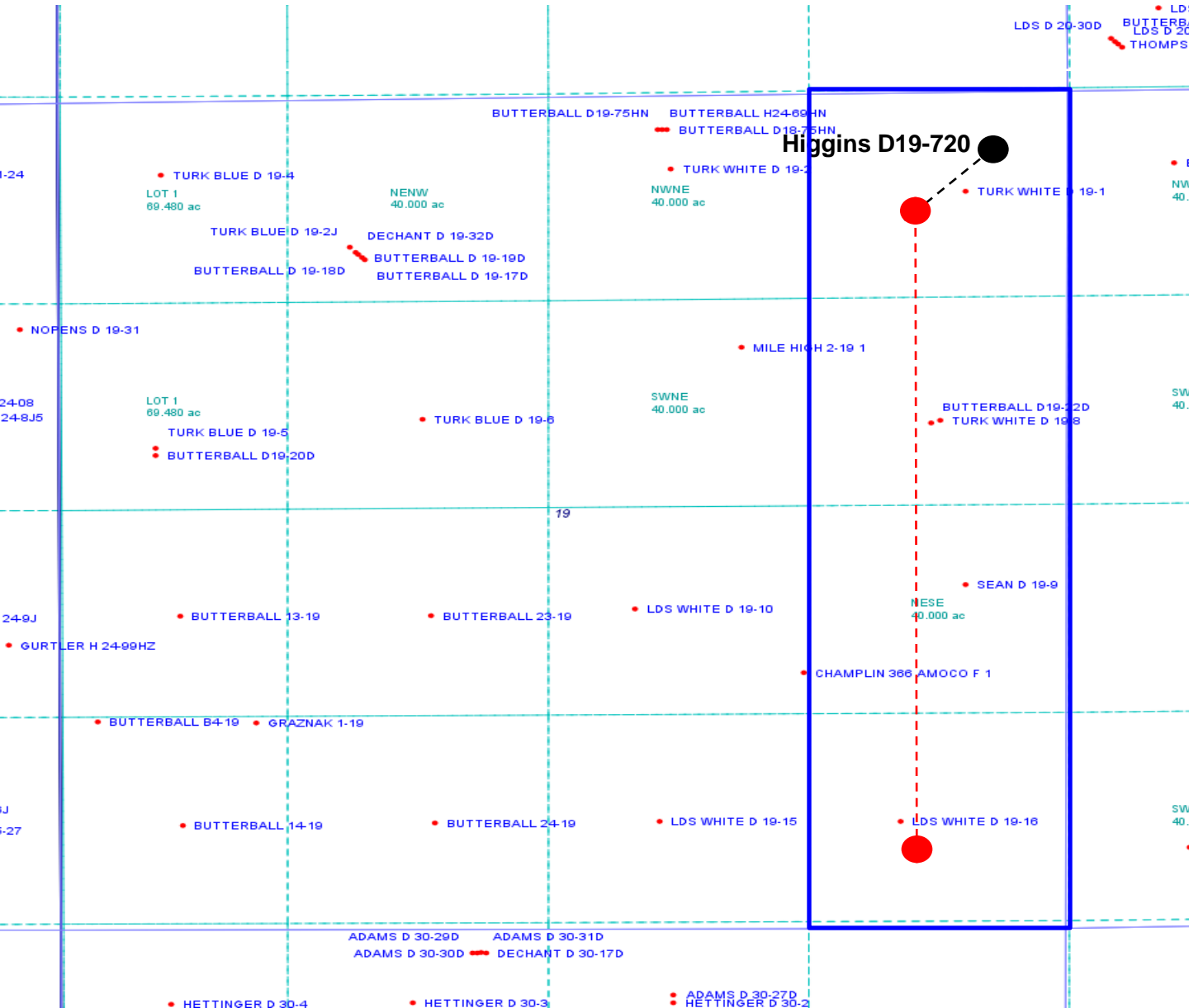
- Map & plat illustrating proposed wellbore spacing unit.

Thank you for your attention to the enclosed. NEI respectfully requests that the COGCC review the enclosed information and approve the Application for Permit to Drill the captioned well.

Sincerely,

Justin Garrett  
Regulatory Analyst II  
Noble Energy Inc.

Proposed Spacing Unit – Noble Energy, Inc  
E/2E/2 Section 19, Township 3 North, Range 64 West



### Legend



Proposed 160.00± acre spacing unit



Bottom Hole Location

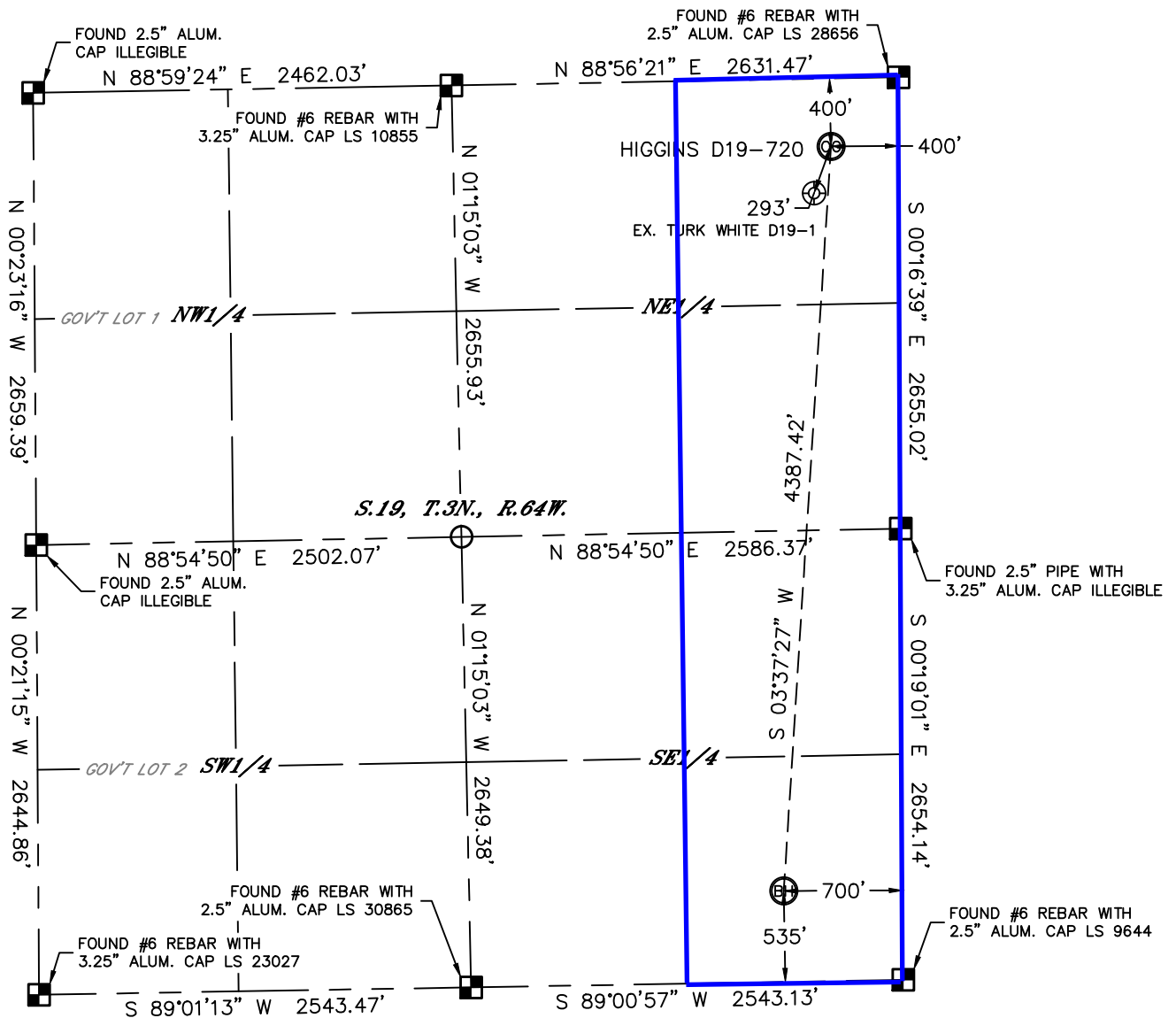


Lat40°, Inc. 1635 Foxtrail Drive, Suite 325 Loveland, CO 970-776-3321

# WELL LOCATION CERTIFICATE

THIS MAP DOES NOT REPRESENT A BOUNDARY SURVEY

SECTION: 19  
TOWNSHIP: 3N  
RANGE: 64W



In accordance with a request from Matt Verbit with Noble Energy Inc.

Lat40°, Inc. has determined the surface location of the HIGGINS D19-720 to be 400' from the NORTH line and 400' from the EAST line and the bottom hole to be 535' from the SOUTH line and 700' from the EAST line as measured at right angles from the section lines of Section 19, Township 3 North, Range 64 West of the Sixth Principal Meridian, County of Weld, State of Colorado.

I hereby state that this Well Location Certificate was prepared by me, or under my direct supervision, that the fieldwork was completed on 5/15/2014, for and on behalf of Noble Energy Inc. That this is not a Land Survey Plat or an Improvement Survey Plat, and that it is not to be relied upon for establishment of fence, building, or other future improvement lines.

#### NOTE:

- 1) Bearings shown are Grid Bearings of the Colorado State Plane Coordinate System, North Zone, North American Datum 1983/2007. The lineal dimensions as contained herein are based upon the "U.S. Survey Foot."
  - 2) Ground elevations are based on an observed GPS elevation (NAVD 1988 DATUM).
  - 3) IMPROVEMENTS: See LOCATION DRAWING for all visible improvements within 500' of disturbed area.
  - 4) SURFACE USE: RANGELAND
  - 5) INSTRUMENT OPERATOR: BRIAN ROTTINGHAUS
  - 6) NEAREST EXISTING WELL: TURK WHITE D19-1, 293' SW
- NEAREST CULTURAL ITEMS:  
BUILDING: 865' SW  
BUILDING UNIT: ±2097' NW  
HIGH OCCUPANCY BUILDING UNIT: 5280'+  
DESIGNATED OUTSIDE ACTIVITY AREA: 5280'+  
PUBLIC ROAD: 388' N (CR 32)  
ABOVEGROUND UTILITY: 399' E  
RAILROAD: 5280'+  
PROPERTY LINE: 400' N

#### SURFACE LOCATION

LAT: 40.21695°N  
LONG: 104.58587°W  
PDOP: 2.8  
ELEV: 4772'  
1/4,1/4: NENE

#### BOTTOM HOLE

LAT: 40.20494°N  
LONG: 104.58703°W

#### LEGEND

- = ALIQUOT MONUMENT AS DESCRIBED  
○ = CALCULATED POSITION

Brian T. Brinkman—Owner, Lat40°, Inc.  
Colorado Licensed Professional Land Surveyor No. 38175  
DATE: 7/22/2014  
PROJECT#: 2014074

