

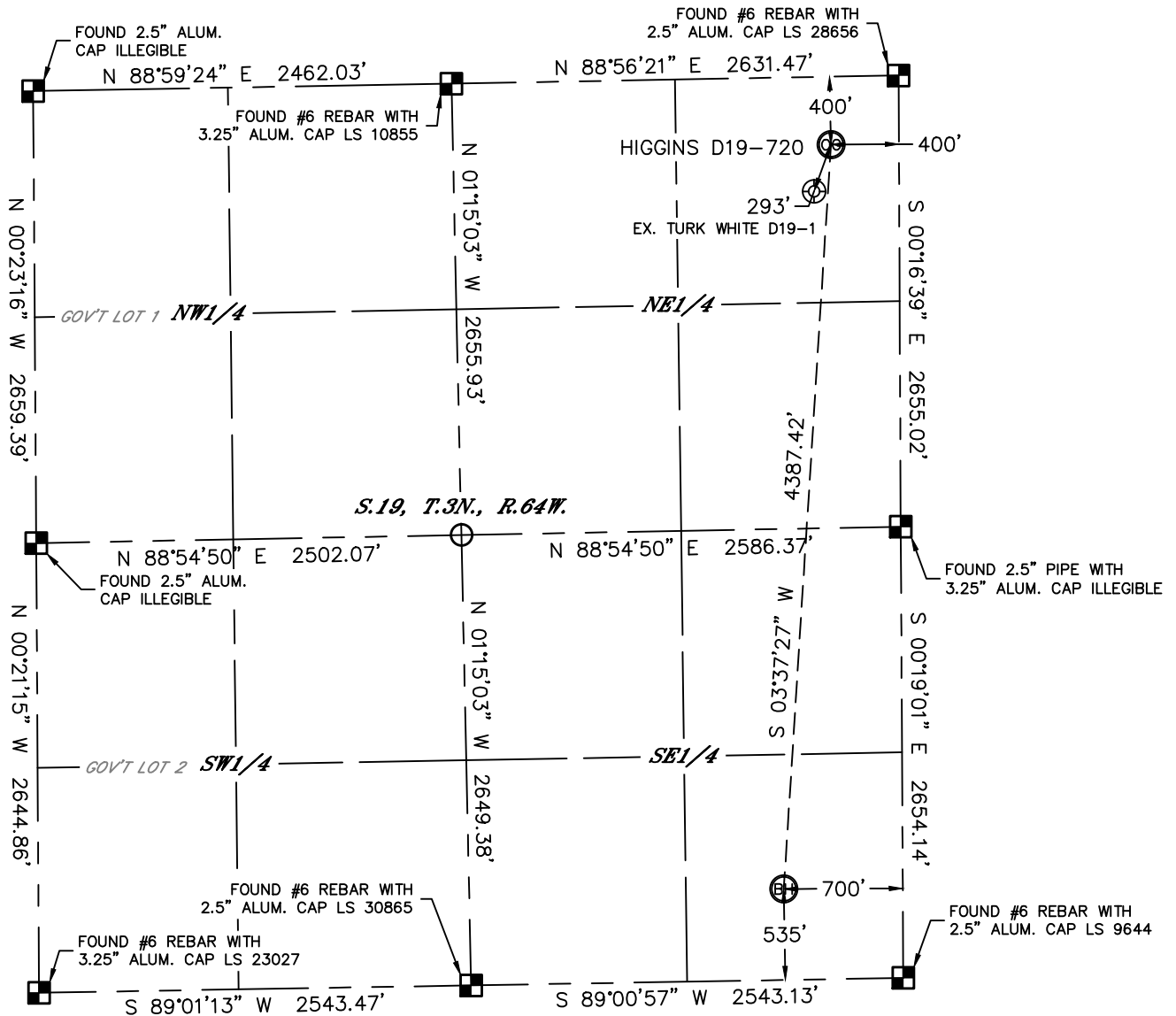


Lat40°, Inc. 1635 Foxtrail Drive, Suite 325 Loveland, CO 970-776-3321

WELL LOCATION CERTIFICATE

THIS MAP DOES NOT REPRESENT A BOUNDARY SURVEY

SECTION: 19
TOWNSHIP: 3N
RANGE: 64W



In accordance with a request from Matt Verbit with Noble Energy Inc.

Lat40°, Inc. has determined the surface location of the HIGGINS D19-720 to be 400' from the NORTH line and 400' from the EAST line and the bottom hole to be 535' from the SOUTH line and 700' from the EAST line as measured at right angles from the section lines of Section 19, Township 3 North, Range 64 West of the Sixth Principal Meridian, County of Weld, State of Colorado.

I hereby state that this Well Location Certificate was prepared by me, or under my direct supervision, that the fieldwork was completed on 5/15/2014, for and on behalf of Noble Energy Inc. That this is not a Land Survey Plat or an Improvement Survey Plat, and that it is not to be relied upon for establishment of fence, building, or other future improvement lines.

NOTE:

- 1) Bearings shown are Grid Bearings of the Colorado State Plane Coordinate System, North Zone, North American Datum 1983/2007. The lineal dimensions as contained herein are based upon the "U.S. Survey Foot."
 - 2) Ground elevations are based on an observed GPS elevation (NAVD 1988 DATUM).
 - 3) IMPROVEMENTS: See LOCATION DRAWING for all visible improvements within 500' of disturbed area.
 - 4) SURFACE USE: RANGELAND
 - 5) INSTRUMENT OPERATOR: BRIAN ROTTINGHAUS
 - 6) NEAREST EXISTING WELL: TURK WHITE D19-1, 293' SW
- NEAREST CULTURAL ITEMS:
BUILDING: 865' SW
BUILDING UNIT: ±2097' NW
HIGH OCCUPANCY BUILDING UNIT: 5280'+
DESIGNATED OUTSIDE ACTIVITY AREA: 5280'+
PUBLIC ROAD: 388' N (CR 32)
ABOVEGROUND UTILITY: 399' E
RAILROAD: 5280'+
PROPERTY LINE: 400' N

SURFACE LOCATION

LAT: 40.21695°N
LONG: 104.58587°W
PDOP: 2.8
ELEV: 4772'
1/4,1/4: NENE

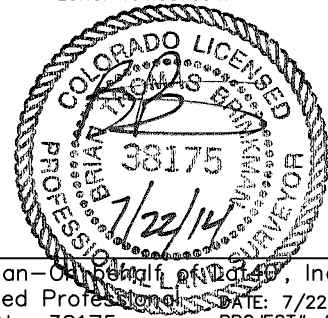
BOTTOM HOLE

LAT: 40.20494°N
LONG: 104.58703°W

LEGEND

- = ALIQUOT MONUMENT AS DESCRIBED
○ = CALCULATED POSITION

Brian T. Brinkman—On behalf of Lat40°, Inc.
Colorado Licensed Professional Land Surveyor No. 38175
DATE: 7/22/2014
PROJECT#: 2014074



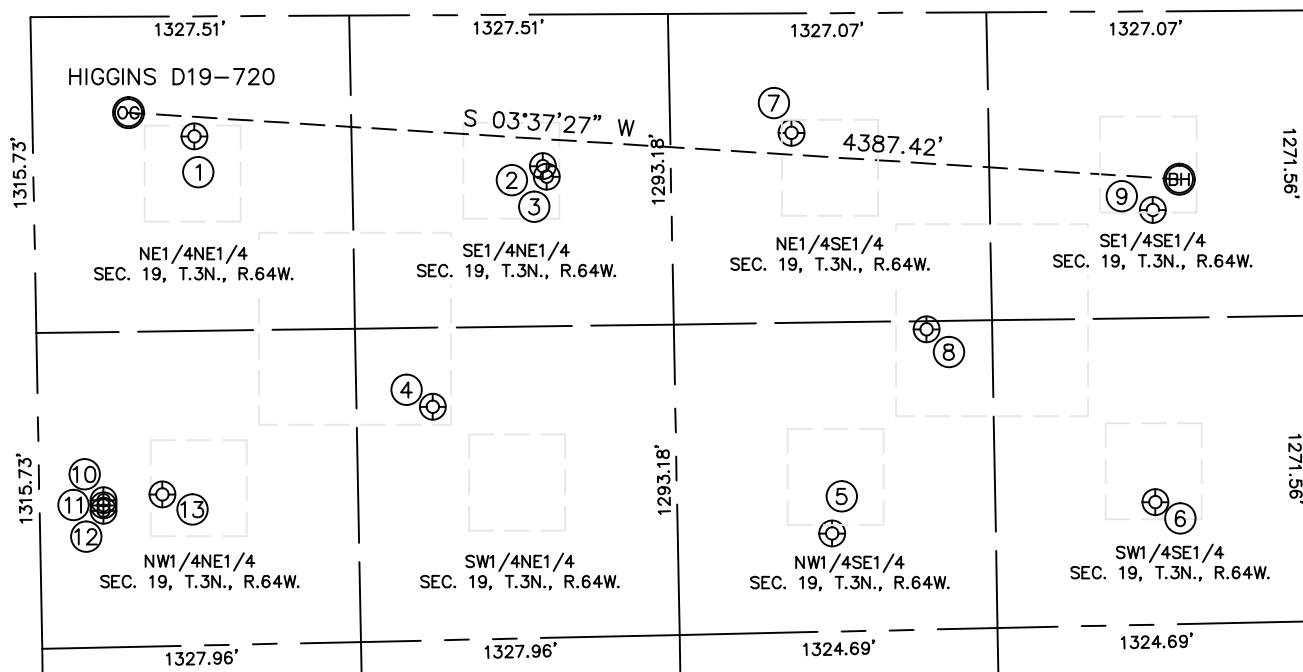


Lat40°, Inc. 1635 Foxtrail Drive, Suite 325 Loveland, CO 970-776-3321

SITE SKETCH

HIGGINS D19-720

SECTION: 19
TOWNSHIP: 3N
RANGE: 64W



WELL NO.	WELL NAME	SHL FOOTAGE				SHL LAT°	SHL LONG°	PDOP	ELEV (FT.)	1/4/1/4
1	TURK WHITE D19-1	673	FNL	500	FEL	40.21620	-104.58624	1.9	4772	NENE
2	TURK WHITE D19-8	2122	FNL	631	FEL	40.21222	-104.58674	2.0	4771	SENE
3	BUTTERBALL D19-22D	2137	FNL	675	FEL	40.21218	-104.58689	2.1	4771	SENE
4	MILE HIGH 2-19-1	1645	FNL	1631	FEL	40.21351	-104.59031	2.2	4773	SWNE
5	LDS WHITE D19-10	2007	FSL	2168	FEL	40.20896	-104.59226	2.2	4775	NWSE
6	LDS WHITE D19-15	659	FSL	2045	FEL	40.20526	-104.59184	2.3	4778	SWSE
7	SEAN D19-9	2148	FSL	498	FEL	40.20937	-104.58628	2.3	4773	NESE
8	CHAMPLIN 366 AMOCO F1	1599	FSL	1320	FEL	40.20785	-104.58923	2.2	4774	NWSE
9	LDS WHITE D19-16	648	FSL	828	FEL	40.20525	-104.58748	2.2	4778	SESE
10	BUTTERBALL D18-75HN	266	FNL	2013	FEL	40.21728	-104.59165	2.5	4776	NWNE
11	BUTTERBALL D19-75HN	266	FNL	2035	FEL	40.21728	-104.59173	2.5	4776	NWNE
12	BUTTERBALL H24-69HN	265	FNL	2057	FEL	40.21728	-104.59180	2.5	4776	NWNE
13	TURK WHITE D19-2	512	FNL	1991	FEL	40.21661	-104.59157	2.5	4773	NWNE

DATE: 7/22/2014
PROJECT#: 2014074