

WELL NO.: U.P. 20-29  
(3821)  
FIELD . . . : RANGELY, CO.

## SURVEY DATA

05-103-06228

REMARKS

SURVEY TYPE . . .	T-S-T	SURFACE TEMP . .	98.7 F
DATE . . . . .	6/23/2014	BHT . . . . .	160.7 F
METERED RATE . .	910 B/D	TBG PRESSURE . .	1500 PSI
MEASURED RATE:	760 B/D	CSG PRESSURE . .	0 PSI
DESIRED RATE . .	N/A	PICK-UP . . . . .	5889'
SERVICE CO. . . .	PLS	INJ. FLUID . . . .	H2O

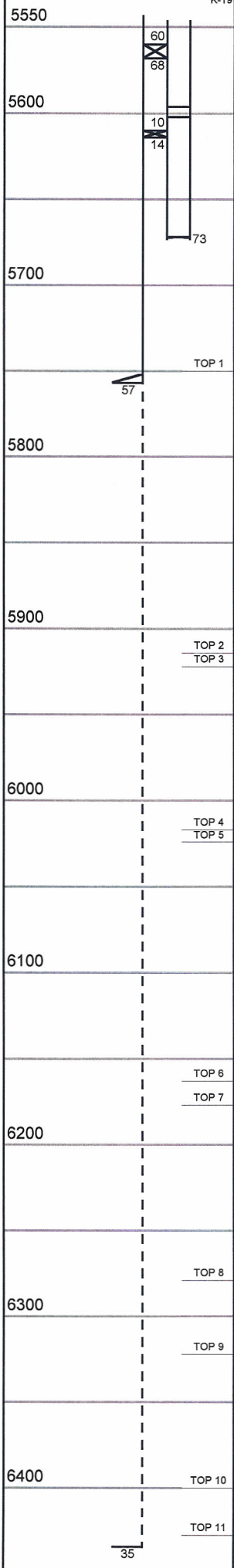
R/A TRACER INDICATES TOP PERF AND PACKERS OK.

RECORDED BY: R. ANDREWS

## INJECTION PROFILE

## MECHANICAL INFORMATION

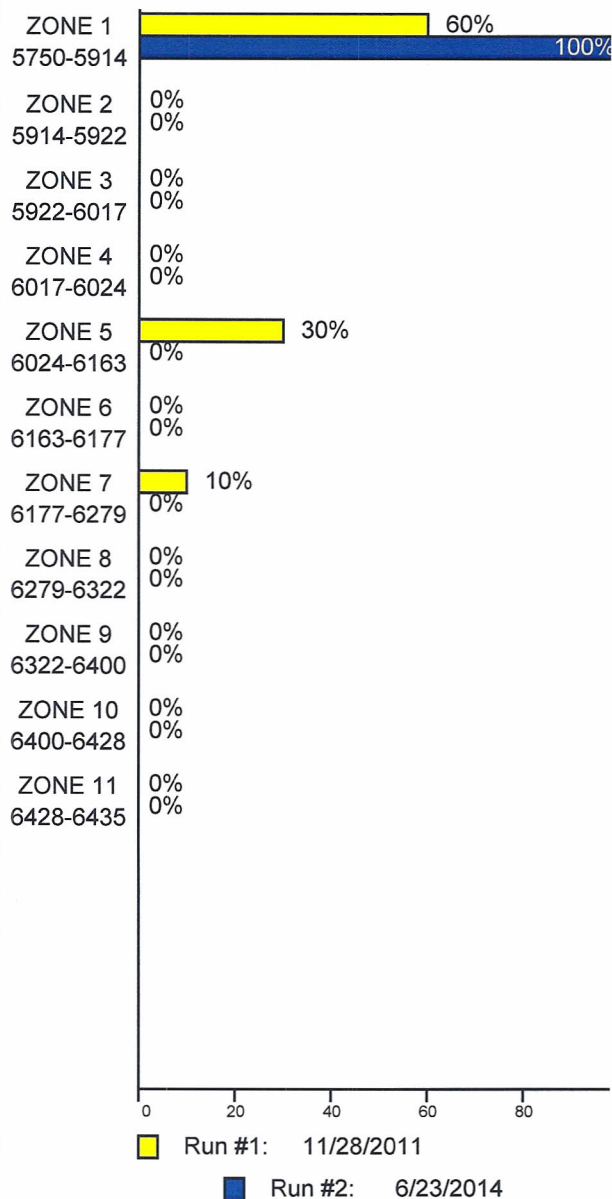
7" 23# CASING	0-5757"
OPEN HOLE	5757'-8435'
2-7/8" F.L. TUBING	0-5560'
TOP PACKER	5560'-5568'
2-7/8" F.L. TUBING	5568'-5596'
ON/OFF TOOL 1.875" "F"	5596'-5602'
2-7/8" F.L. TUBING	5602'-5610'
PACKER	5610'-5614'
2-7/8" F.L. TUBING	5614'-5673'
2-3/8" W.L.E.G.	5673'



NOTE: FLUID FROM 5889' IS COMING INTO  
WELLBORE, MOVING UP AND EXITS WITH  
INJECTED FLUID.

100%

PERCENTAGE INJECTED INTO  
ZONE



TEMPERATURES (F°)

DATE	RUN #1 11/28/2011	RUN #2 6/23/2014	
SURFACE	95.4	98.7	
5750-5914	---	---	
TDL (5889)	120.3	160.7	
5914-5922	---	---	
5922-6017	---	---	
6017-6024	---	---	
6024-6163	---	---	
6163-6177	---	---	
6177-6279	---	---	
6279-6322	---	---	
6322-6400	---	---	
6400-6428	---	---	
6428-6435	---	---	
RATE (B/D)	1351	760	
PRESS (PSI)	1640	1500	

#15