



**RADIAL CEMENT BOND  
GAMMA RAY  
CCL**

Company KERR McGEE OIL AND GAS  
Well PLATTE 23-2 (DIR)  
Field WATTENBERG  
County WELD  
State COLORADO

Company KERR McGEE OIL AND GAS  
Well PLATTE 23-2 (DIR)  
Field WATTENBERG  
County WELD State COLORADO

Location: API # : 05-123-25712  
SE SW Other Services

SEC 2 TWP 3 RGE 67W  
Permanent Datum GROUND LEVEL Elevation 4763  
Log Measured From K.B. 14'  
Drilling Measured From G.L. 4763  
Elevation K.B. 4777  
D.F. 4776  
G.L. 4763

Date 7-28-2014

Run Number ONE  
Depth Driller 7425  
Depth Logger 1774'  
Bottom Logged Interval 1771  
Top Log Interval SURFACE  
Open Hole Size 12.5"  
Type Fluid WATER  
Density / Viscosity 1.0  
Max. Recorded Temp. 86 DEG F  
Estimated Cement Top 268'  
Time Well Ready ON ARRIVAL  
Time Logger on Bottom N/A  
Equipment Number 7770  
Location GREELEY  
Recorded By C.BAUM  
Witnessed By BILL SMITH

Borehole Record				Tubing Record			
Run Number	Bit	From	To	Size	Weight	From	To
ONE	12.25	11'	290'				
TWO	8.675	290'	7410'				

	Size	Wgt/Ft	Top	Bottom
Casing Record				
Surface String	8.63"	24#	14'	727'
Prot. String				
Production String	4.5"	11.6#	14'	7410'
Liner				

<<< Fold Here >>>

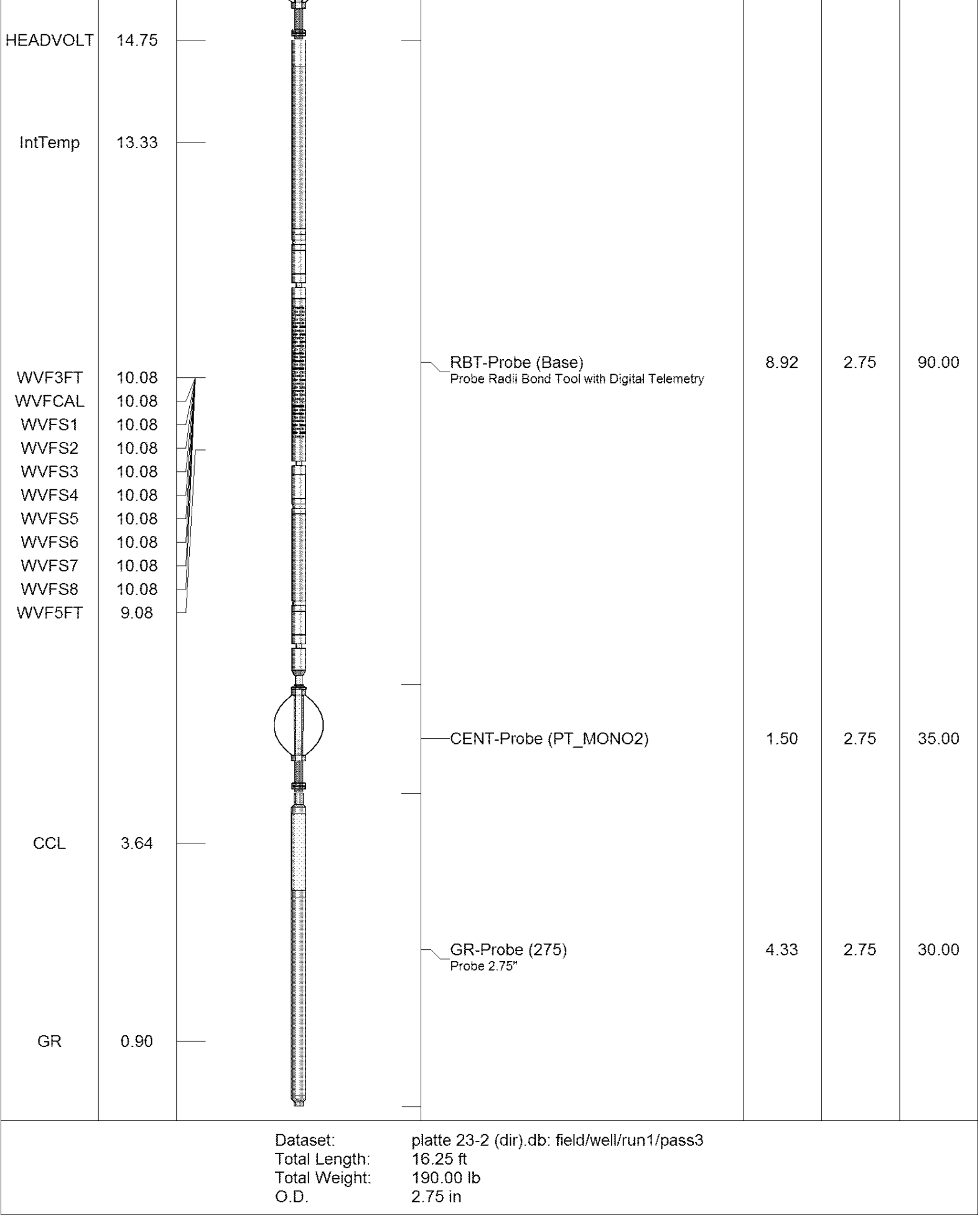
All interpretations are opinions based on inferences from electrical or other measurements and we cannot and do not guarantee the accuracy or correctness of any interpretation, and we shall not, except in the case of gross or willful negligence on our part, be liable or responsible for any loss, costs, damages, or expenses incurred or sustained by anyone resulting from any interpretation made by any of our officers, agents or employees. These interpretations are also subject to our general terms and conditions set out in our current Price Schedule.



**Comments**

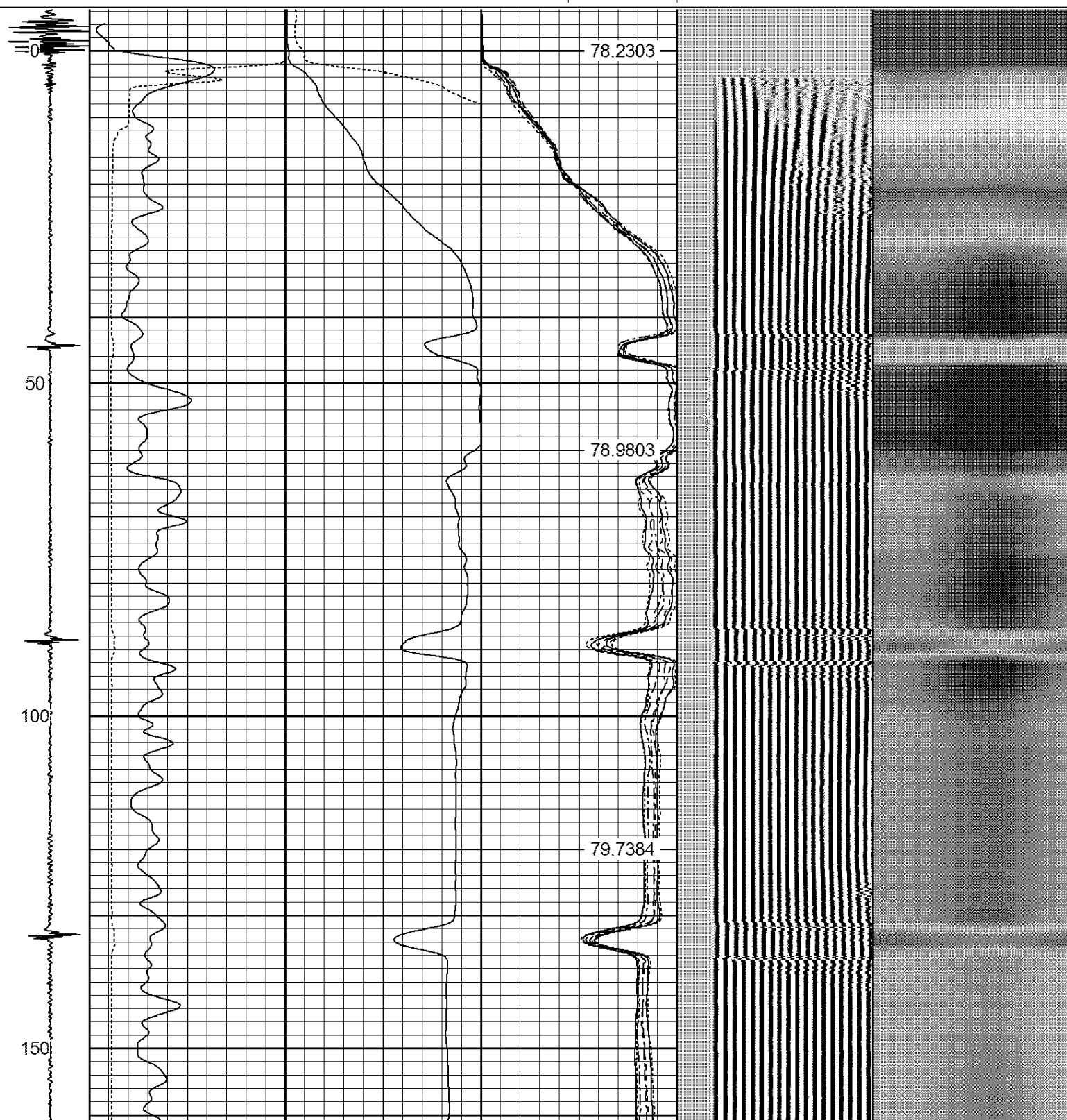
RAN CBL TO VERIFY CEMENT BOND

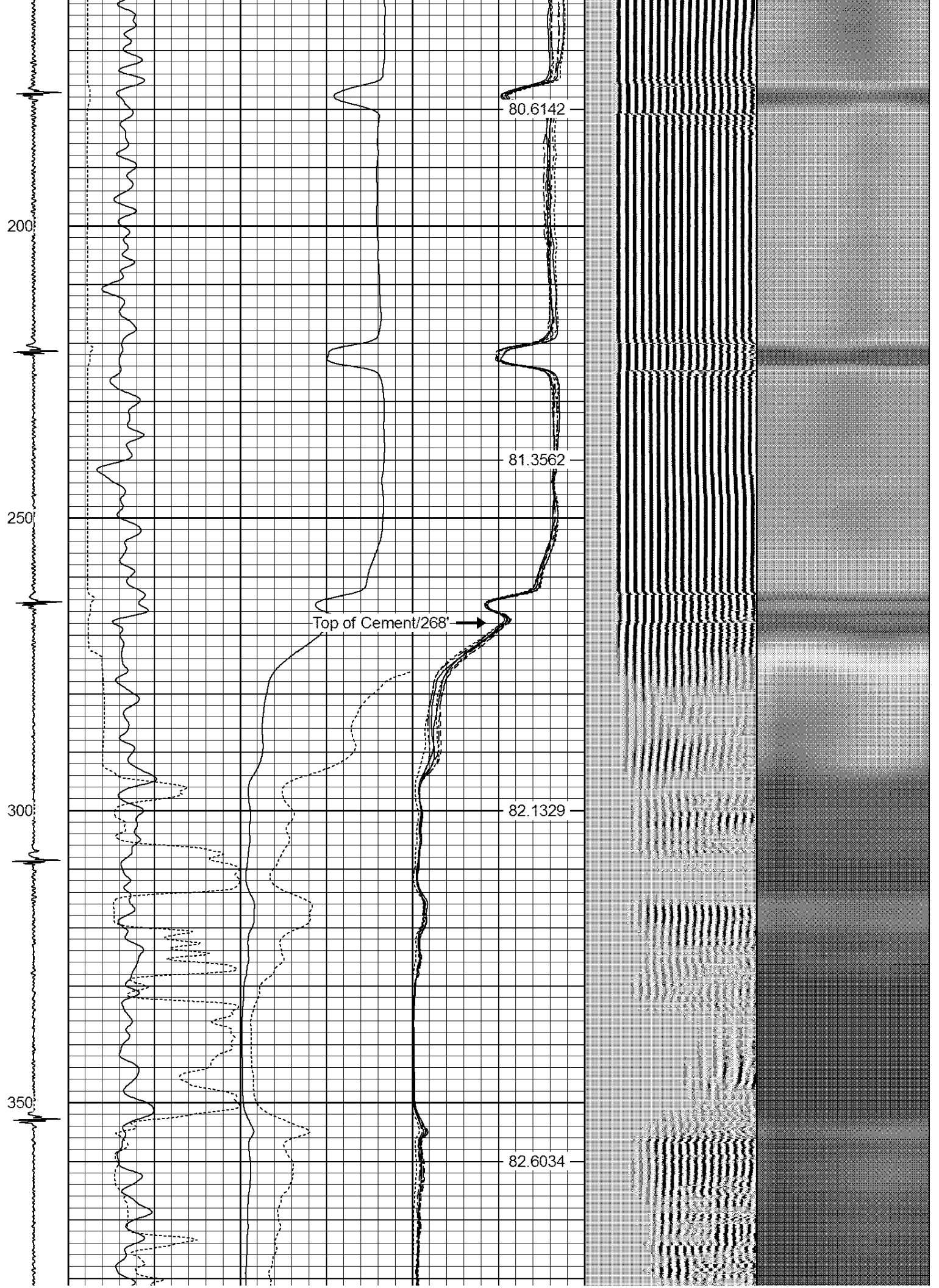
THANK YOU FOR USING WARRIOR!!!!

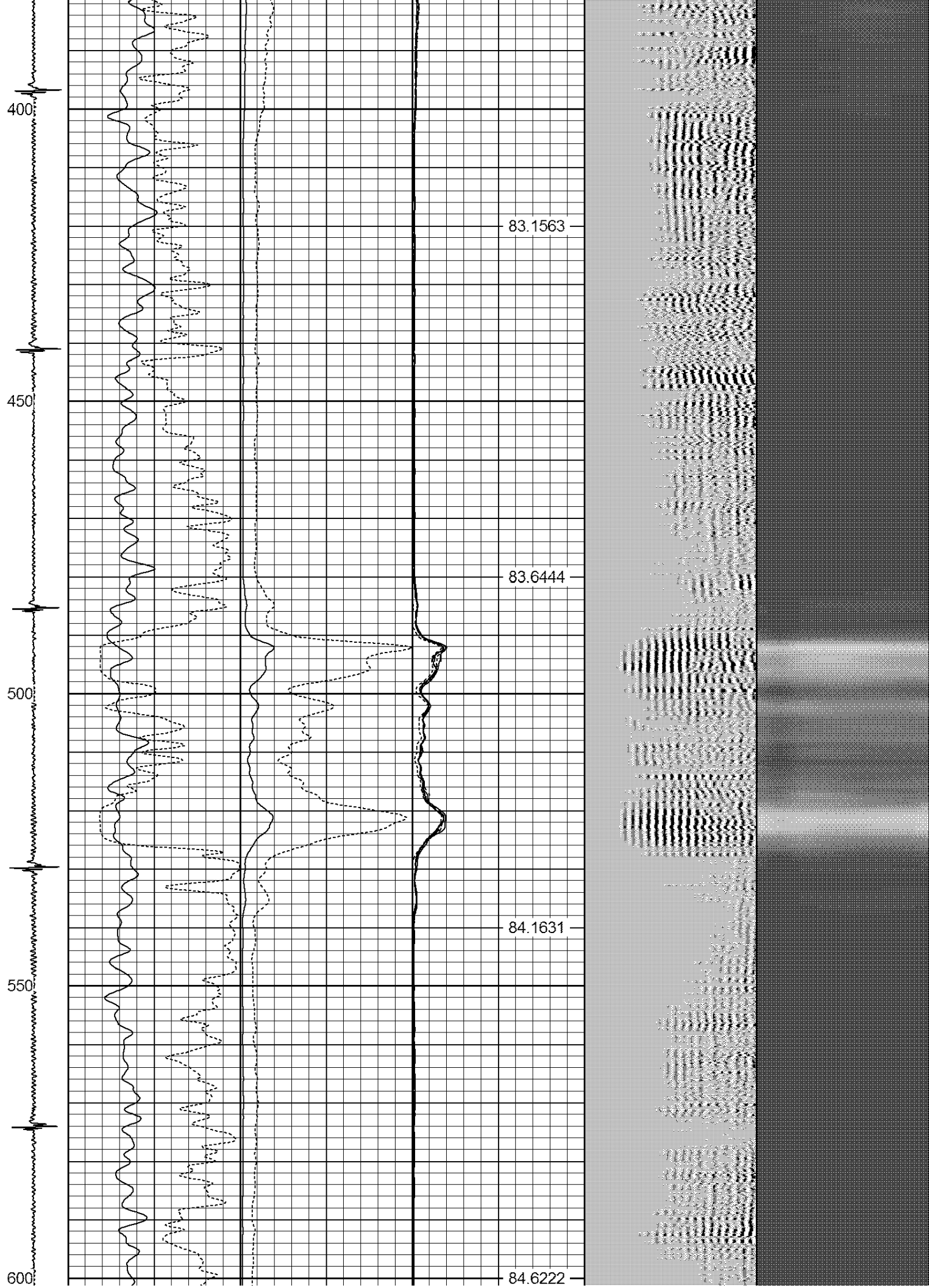
Sensor	Offset (ft)	Schematic	Description	Len (ft)	OD (in)	Wt (lb)
			CENT #2 -Probe (PTS_MONO)	1.50	2.75	35.00



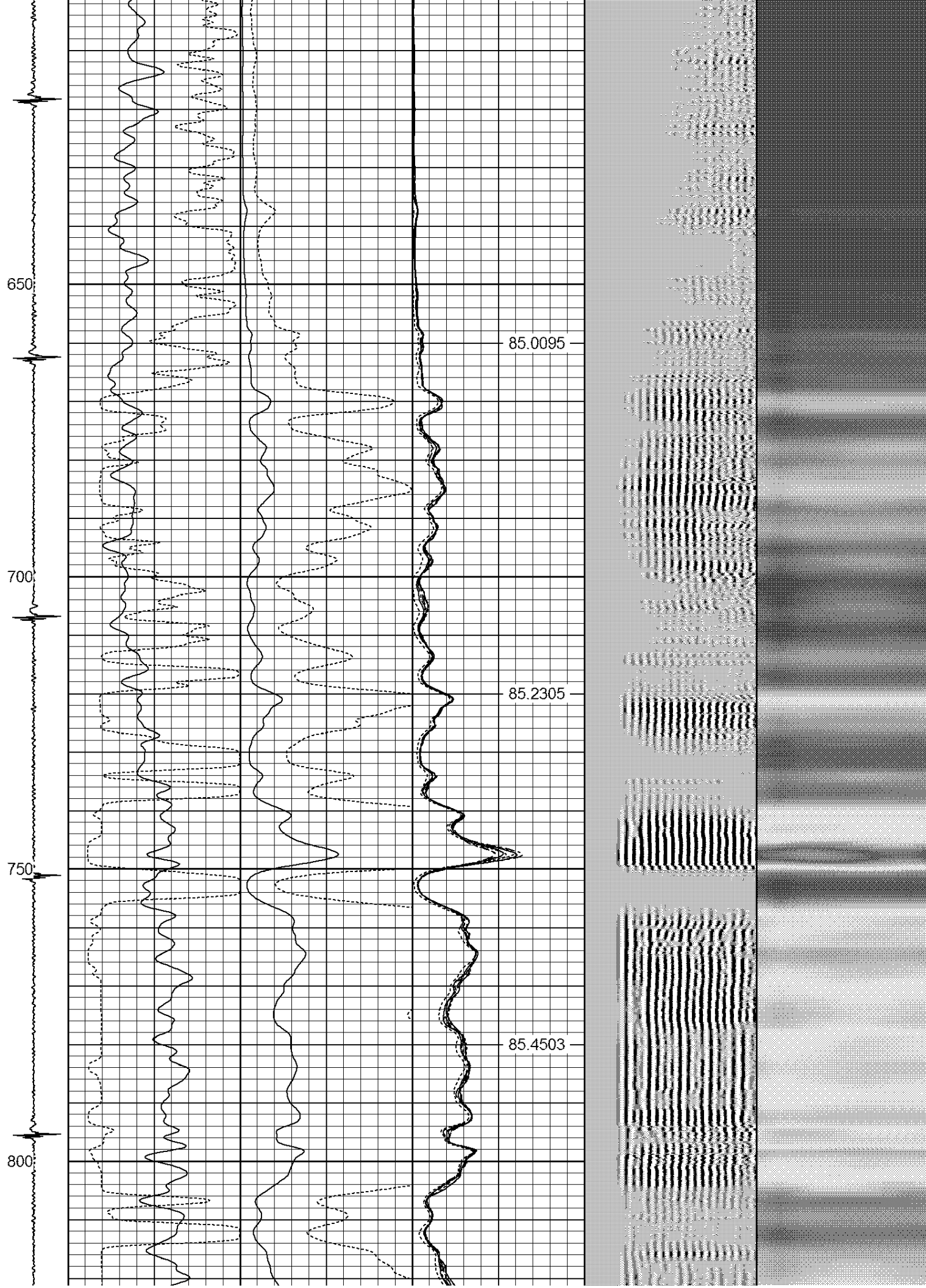
-9	CCL	5	200	TT (usec)	800	0	AMP (mV)	100	0	AMPS1	100	200	VDL	1200	1	Cement Map	8
LSPD (ft/min)	0		GR (GAPI)		200	0	AMPx5 (mV)		20	0	AMPS2	100			1	100	
	200		GR (GAPI)		400					0	AMPS4	100					
										0	AMPS5	100					
										0	AMPS6	100					
										0	AMPS7	100					
0	250									0	AMPS8	100					
											IntTemp (degF)						

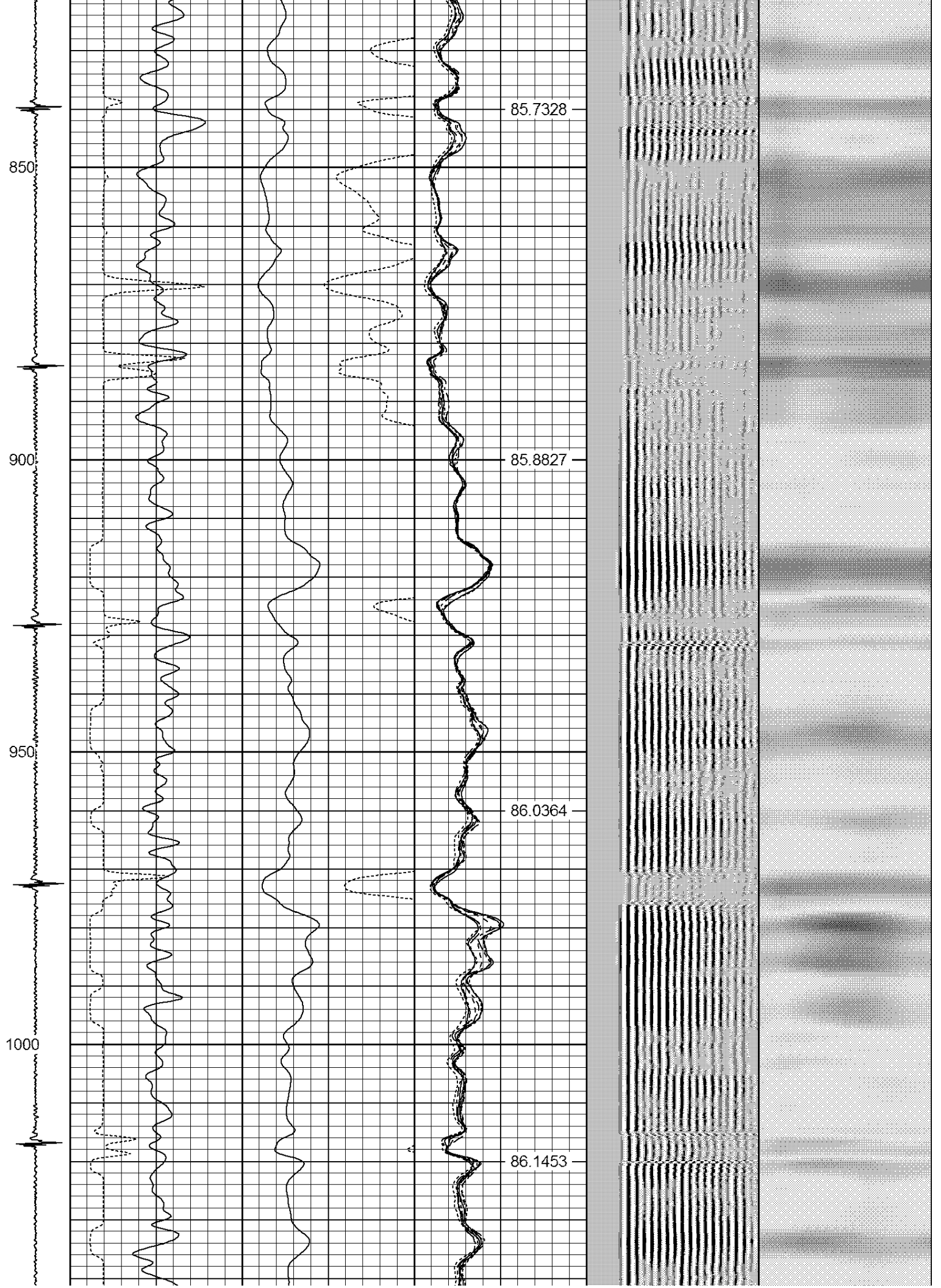












1050

1100

1150

1200

1250

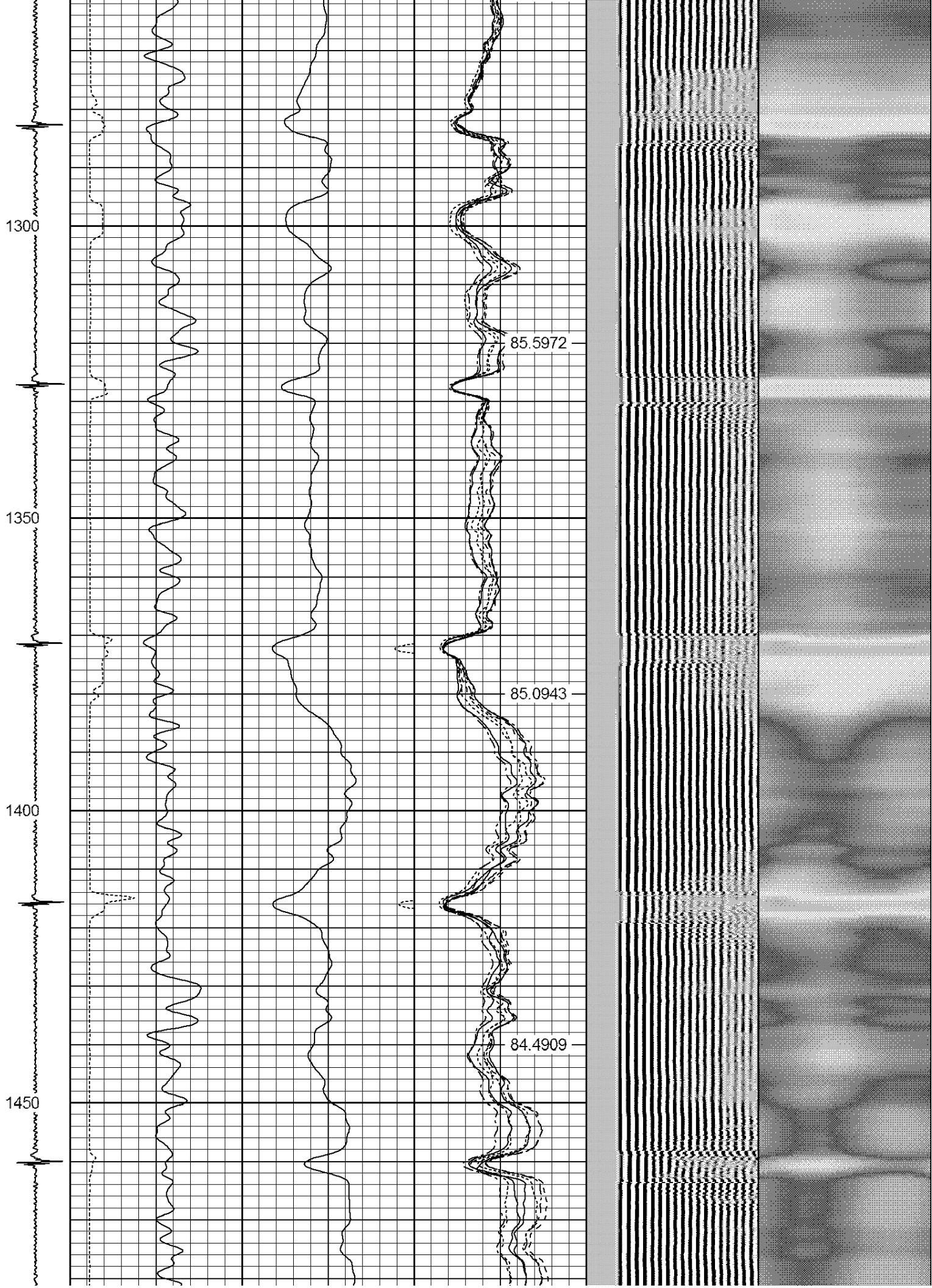
86.0534

85.9608

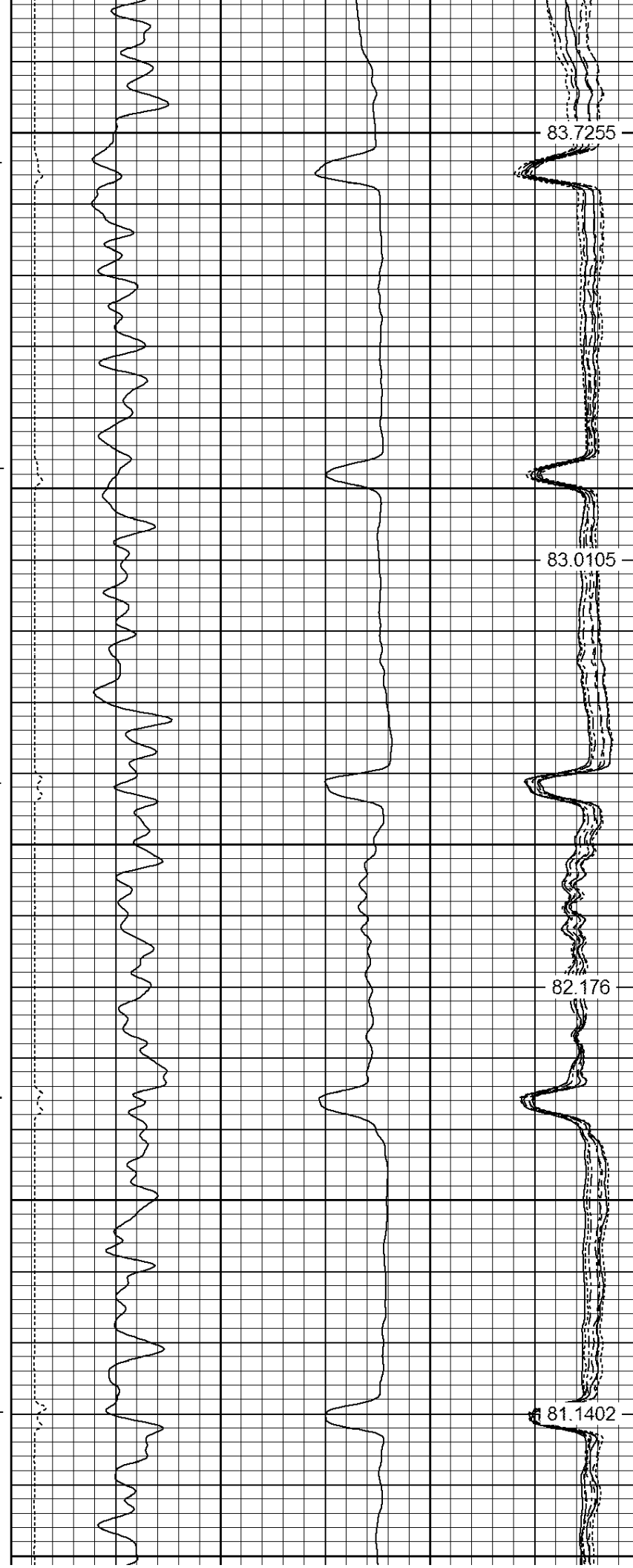
86.0291

85.9063

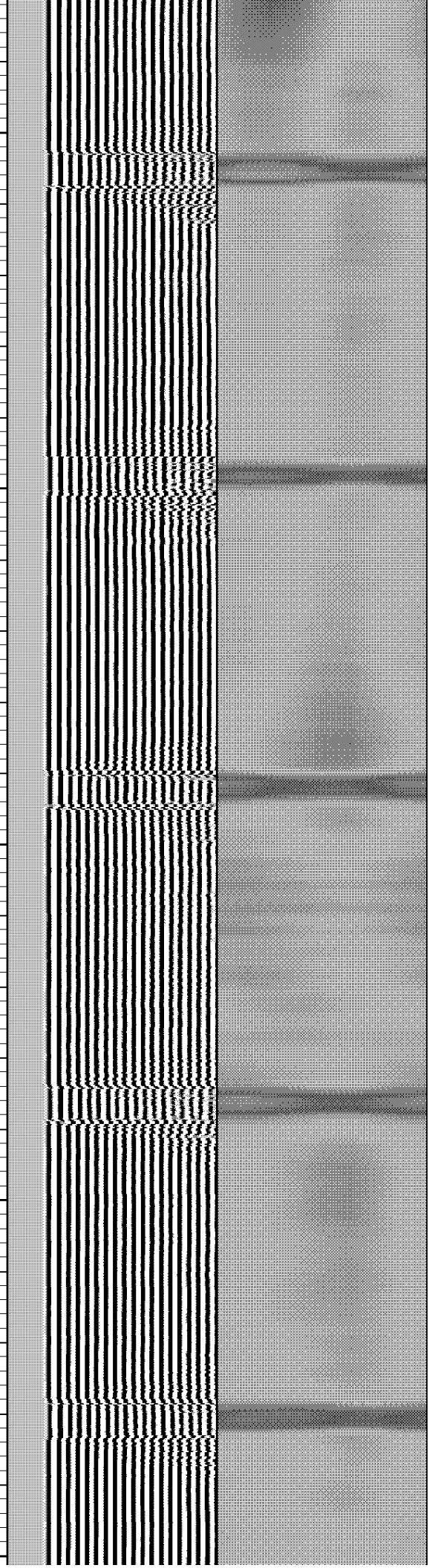


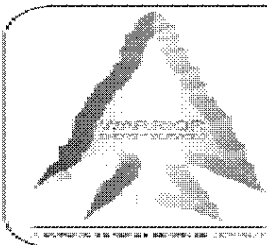
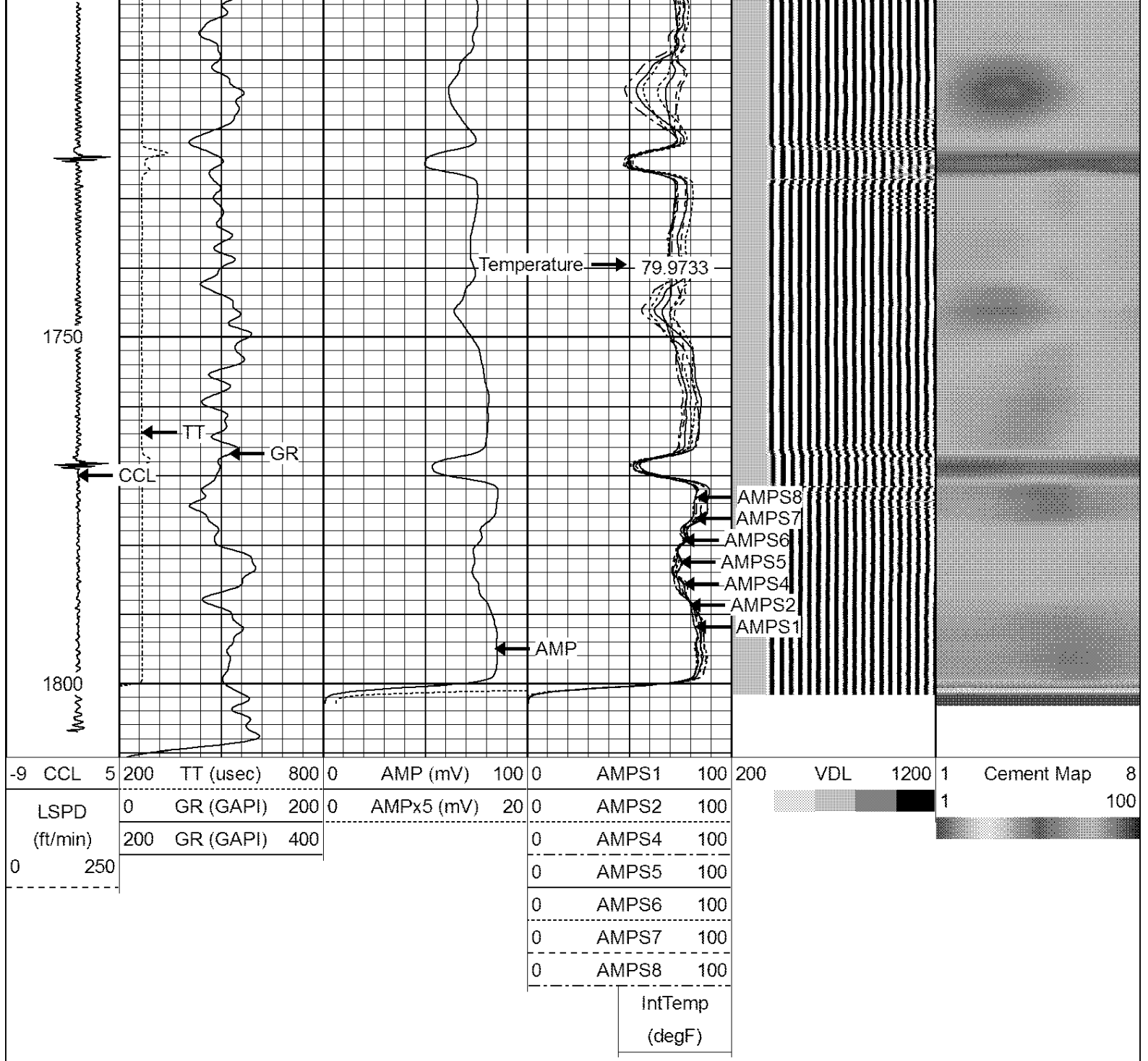


1500  
1550  
1600  
1650  
1700



83.7255  
83.0105  
82.176  
81.1402





**WARRIOR**  
ENERGY SERVICES

Company Kerr McGee Oil and Gas

Well PLATTE 23-2 (DIR)

Field WATTENBERG

County WELD

State CO