

05-103-07466



Chevron
U.S.A., Inc.

WELL NO.: CARNEY 27X-34
(5332)
FIELD : RANGELY, CO.

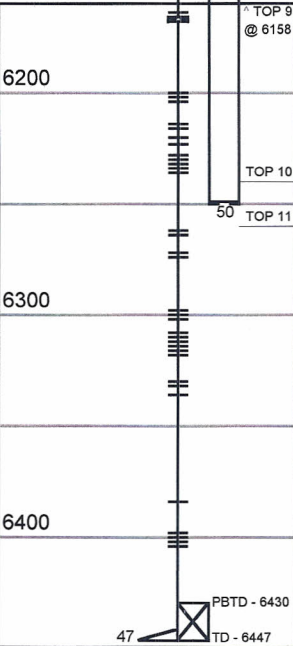
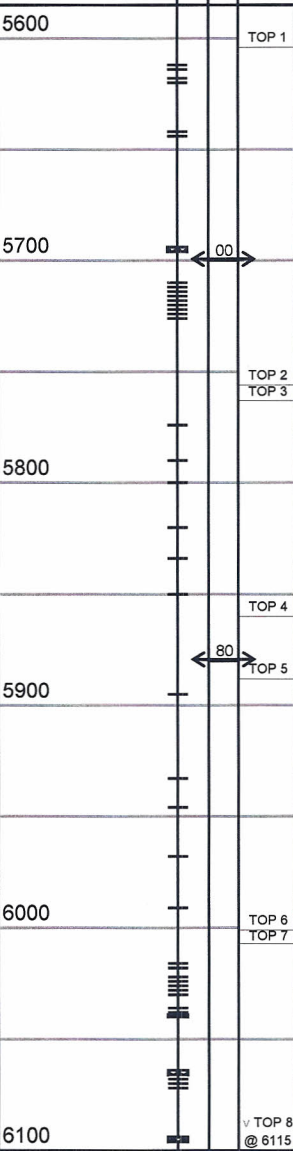
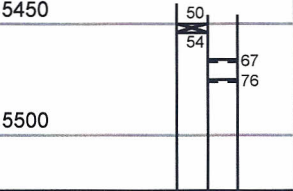
SURVEY DATA

REMARKS

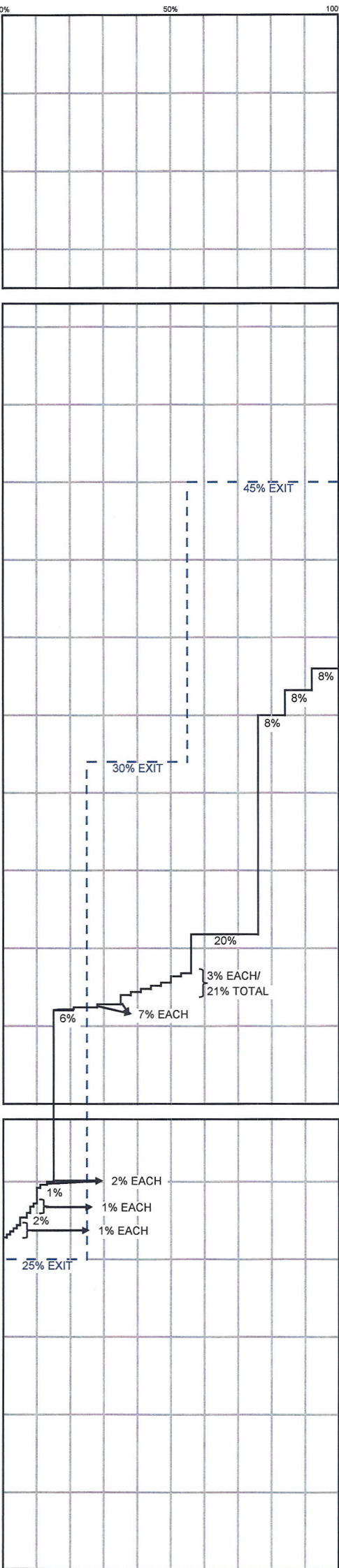
RUN NO. 5				REMARKS
SURVEY TYPE	T-S-T	SURFACE TEMP	96.3 F	
DATE	6/12/2014	BHT	157.7 F	
METERED RATE	250 B/D	TBG PRESSURE	1750 PSI	
MEASURED RATE	1410 B/D	CSG PRESSURE	0 PSI	
DESIRED RATE	N/A	PICK-UP	6400'	
SERVICE CO.	PLS	INJ. FLUID	H2O	06/12/14, RAN 1.75" GAUGE RING TO 6393'. NO PROBLEMS.

MECHANICAL INFORMATION

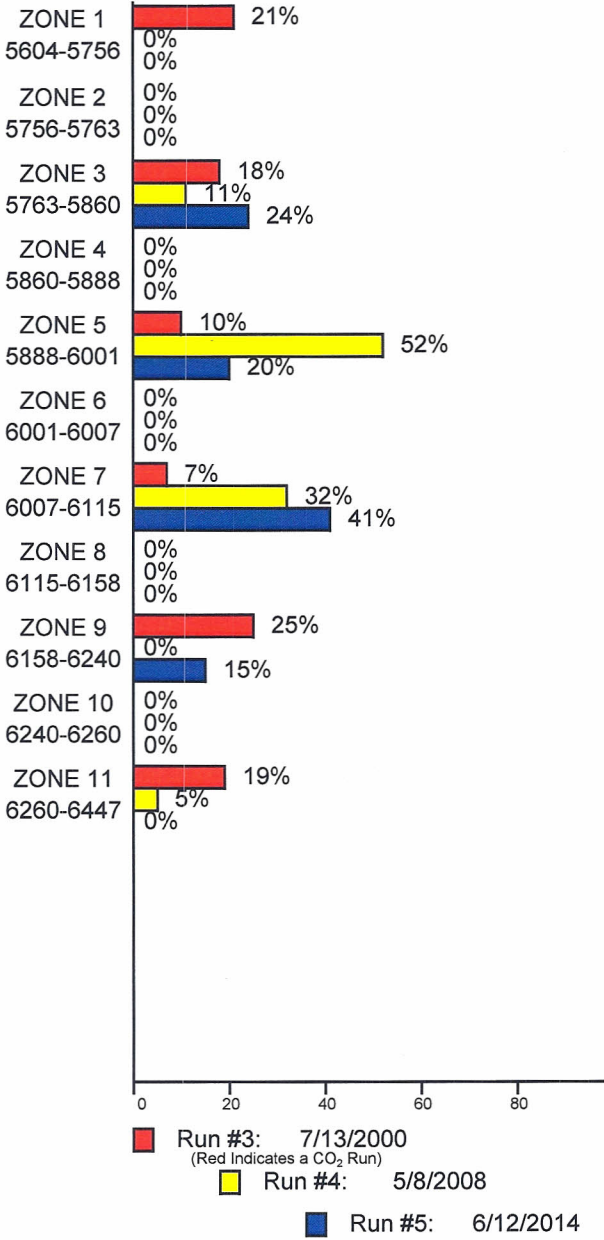
7" 23# CASING	0-6447'
P.B.T.D.	6430'
2-7/8" D.L. TUBING	0-5450'
PACKER	5450'-5454'
MILL OUT EXTENSION	5454'-5460'
2-3/8" TUBING SUB	5460'-5466'
1.875" "F" NIPPLE	5466'-5467'
2-3/8" TUBING SUB	5467'-5475'
1.875" "X" NIPPLE	5475'-5476'
2-3/8" STAR F.G. TUBING	5476'-6249'
1.81" "R" NIPPLE	6249'-6250'



INJECTION PROFILE



PERCENTAGE INJECTED INTO ZONE



TEMPERATURES (F°)

DATE	RUN #3 7/13/2000	RUN #4 5/8/2008	RUN #5 6/12/2014
SURFACE	66.4	N/A	96.3
5604-5756	---	---	---
5756-5763	---	---	---
5763-5860	---	---	---
5860-5888	---	---	---
5888-6001	---	---	---
6001-6007	---	---	---
6007-6115	---	---	---
6115-6158	---	---	---
6158-6240	---	---	---
6240-6260	---	---	---
6260-6447	---	---	---
TDL (6400)	116.8	152.0	157.7
RATE (B/D)	2750	645	1410
PRESS (PSI)	2375	1250	1750