

# Synergy Resources

Well Name: **SRC Gilbert 42-14-11CHZ**

Surface Location: SRC Gilbert 42-14-11NHZ Pad Sec.14-T5N-R66W  
North American Datum 1983, US State Plane 1983, Colorado Northern Zone

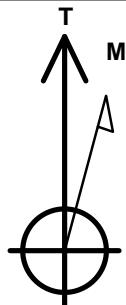
Ground Elevation: 4835.0

+N/-S	+E/-W	Northing	Easting	Latitude	Longitude	Slot
0.0	0.0	1389104.52	3210805.24	40.399024	-104.743099	

RKB-12' WELL @ 4847.0ft (RKB-12')

## WELLBORE TARGET DETAILS

Name	TVD	+N/-S	+E/-W	Shape
SHL 2483'FSL & 2267'FEL, Sec.14	1.0	0.0	0.0	Point
BHL 2418'FSL & 1473'FEL, Sec.11	7448.0	5176.2	753.3	Point



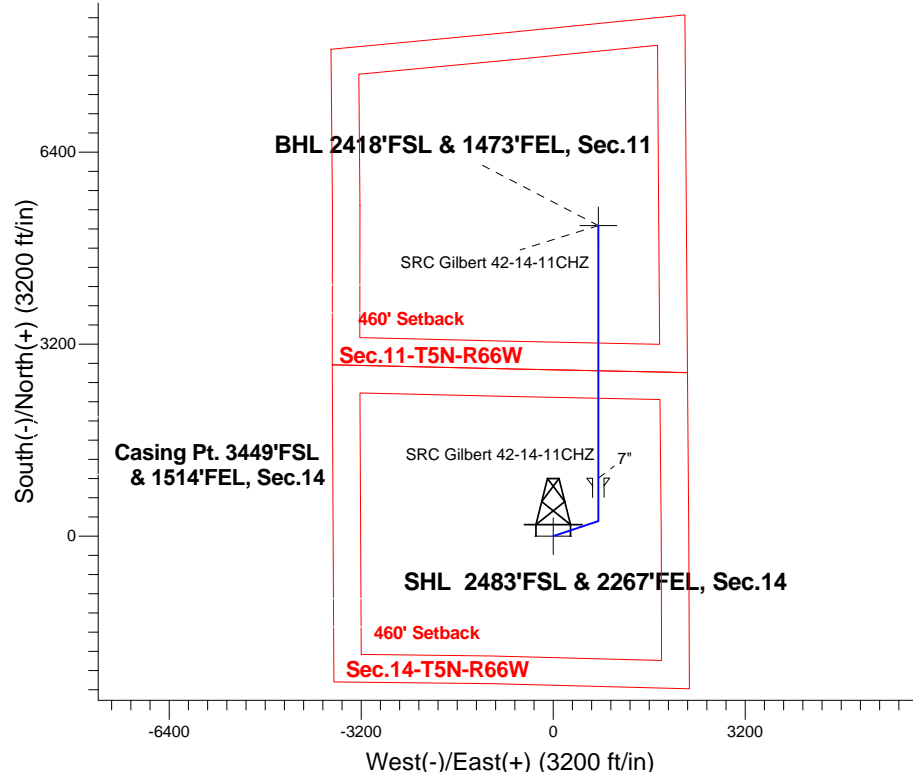
Azimuths to True North  
Magnetic North: 8.43°

Magnetic Field  
Strength: 52803.6snT  
Dip Angle: 66.95°  
Date: 7/31/2014  
Model: IGRF2010

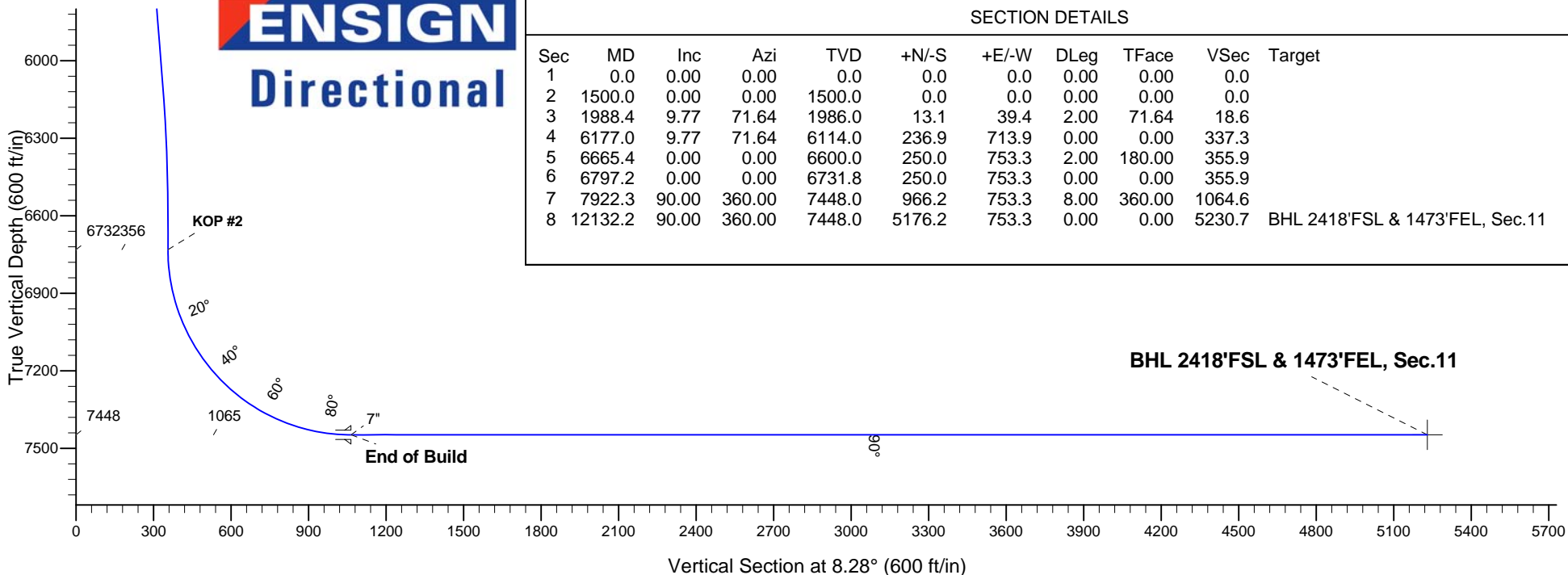
SRC Gilbert 42-14-11NHZ Pad Sec.14-T5N-R66W  
SRC Gilbert 42-14-11CHZ  
Plan #2 (7-24-14)  
11:41, July 31 2014

## ANNOTATIONS

TVD	MD	Annotation
1500.0	1500.0	KOP #1
6731.8	6797.2	KOP #2
7448.0	7922.3	End of Build



**ENSIGN**  
**Directional**



## SECTION DETAILS

Sec	MD	Inc	Azi	TVD	+N/-S	+E/-W	DLeg	TFace	VSec	Target
1	0.0	0.00	0.00	0.0	0.0	0.0	0.00	0.00	0.0	
2	1500.0	0.00	0.00	1500.0	0.0	0.0	0.00	0.00	0.0	
3	1988.4	9.77	71.64	1986.0	13.1	39.4	2.00	71.64	18.6	
4	6177.0	9.77	71.64	6114.0	236.9	713.9	0.00	0.00	337.3	
5	6665.4	0.00	0.00	6600.0	250.0	753.3	2.00	180.00	355.9	
6	6797.2	0.00	0.00	6731.8	250.0	753.3	0.00	0.00	355.9	
7	7922.3	90.00	360.00	7448.0	966.2	753.3	8.00	360.00	1064.6	
8	12132.2	90.00	360.00	7448.0	5176.2	753.3	0.00	0.00	5230.7	BHL 2418'FSL & 1473'FEL, Sec.11



## **Synergy Resources**

**SEC.14-T5N-R66W**

**SRC Gilbert 42-14-11NHZ Pad Sec.14-T5N-R66W**

**SRC Gilbert 42-14-11CHZ**

**Wellbore #1**

**Plan: Plan #2 (7-24-14)**

## **Standard Planning Report**

**31 July, 2014**

Plan Sections										
Measured Depth (ft)	Inclination (°)	Azimuth (°)	Vertical Depth (ft)	+N/-S (ft)	+E/-W (ft)	Dogleg Rate (°/100ft)	Build Rate (°/100ft)	Turn Rate (°/100ft)	TFO (°)	Target
0.0	0.00	0.00	0.0	0.0	0.0	0.00	0.00	0.00	0.00	
1,500.0	0.00	0.00	1,500.0	0.0	0.0	0.00	0.00	0.00	0.00	
1,988.4	9.77	71.64	1,986.0	13.1	39.4	2.00	2.00	0.00	71.64	
6,177.0	9.77	71.64	6,114.0	236.9	713.9	0.00	0.00	0.00	0.00	
6,665.4	0.00	0.00	6,600.0	250.0	753.3	2.00	-2.00	0.00	180.00	
6,797.2	0.00	0.00	6,731.8	250.0	753.3	0.00	0.00	0.00	0.00	
7,922.3	90.00	360.00	7,448.0	966.2	753.3	8.00	8.00	0.00	360.00	
12,132.2	90.00	360.00	7,448.0	5,176.2	753.3	0.00	0.00	0.00	0.00	BHL 2418'FSL & 14

<b>Database:</b>	Landmark	<b>Local Co-ordinate Reference:</b>	Well SRC Gilbert 42-14-11CHZ
<b>Company:</b>	Synergy Resources	<b>TVD Reference:</b>	WELL @ 4847.0ft (RKB-12')
<b>Project:</b>	SEC.14-T5N-R66W	<b>MD Reference:</b>	WELL @ 4847.0ft (RKB-12')
<b>Site:</b>	SRC Gilbert 42-14-11NHZ Pad	<b>North Reference:</b>	True
	Sec.14-T5N-R66W		
<b>Well:</b>	SRC Gilbert 42-14-11CHZ	<b>Survey Calculation Method:</b>	Minimum Curvature
<b>Wellbore:</b>	Wellbore #1		
<b>Design:</b>	Plan #2 (7-24-14)		

Planned Survey									
Measured Depth (ft)	Inclination (°)	Azimuth (°)	Vertical Depth (ft)	+N/-S (ft)	+E/-W (ft)	Vertical Section (ft)	Dogleg Rate (°/100ft)	Build Rate (°/100ft)	Turn Rate (°/100ft)
0.0	0.00	0.00	0.0	0.0	0.0	0.0	0.00	0.00	0.00
100.0	0.00	0.00	100.0	0.0	0.0	0.0	0.00	0.00	0.00
200.0	0.00	0.00	200.0	0.0	0.0	0.0	0.00	0.00	0.00
300.0	0.00	0.00	300.0	0.0	0.0	0.0	0.00	0.00	0.00
400.0	0.00	0.00	400.0	0.0	0.0	0.0	0.00	0.00	0.00
500.0	0.00	0.00	500.0	0.0	0.0	0.0	0.00	0.00	0.00
600.0	0.00	0.00	600.0	0.0	0.0	0.0	0.00	0.00	0.00
700.0	0.00	0.00	700.0	0.0	0.0	0.0	0.00	0.00	0.00
800.0	0.00	0.00	800.0	0.0	0.0	0.0	0.00	0.00	0.00
900.0	0.00	0.00	900.0	0.0	0.0	0.0	0.00	0.00	0.00
1,000.0	0.00	0.00	1,000.0	0.0	0.0	0.0	0.00	0.00	0.00
1,100.0	0.00	0.00	1,100.0	0.0	0.0	0.0	0.00	0.00	0.00
1,200.0	0.00	0.00	1,200.0	0.0	0.0	0.0	0.00	0.00	0.00
1,300.0	0.00	0.00	1,300.0	0.0	0.0	0.0	0.00	0.00	0.00
1,400.0	0.00	0.00	1,400.0	0.0	0.0	0.0	0.00	0.00	0.00
1,500.0	0.00	0.00	1,500.0	0.0	0.0	0.0	0.00	0.00	0.00
<b>KOP #1</b>									
1,600.0	2.00	71.64	1,600.0	0.5	1.7	0.8	2.00	2.00	0.00
1,700.0	4.00	71.64	1,699.8	2.2	6.6	3.1	2.00	2.00	0.00
1,800.0	6.00	71.64	1,799.5	4.9	14.9	7.0	2.00	2.00	0.00
1,900.0	8.00	71.64	1,898.7	8.8	26.5	12.5	2.00	2.00	0.00
1,988.4	9.77	71.64	1,986.0	13.1	39.4	18.6	2.00	2.00	0.00
2,000.0	9.77	71.64	1,997.5	13.7	41.3	19.5	0.00	0.00	0.00
2,100.0	9.77	71.64	2,096.0	19.0	57.4	27.1	0.00	0.00	0.00
2,200.0	9.77	71.64	2,194.6	24.4	73.5	34.7	0.00	0.00	0.00
2,300.0	9.77	71.64	2,293.1	29.7	89.6	42.3	0.00	0.00	0.00
2,400.0	9.77	71.64	2,391.7	35.1	105.7	49.9	0.00	0.00	0.00
2,500.0	9.77	71.64	2,490.2	40.4	121.8	57.5	0.00	0.00	0.00
2,600.0	9.77	71.64	2,588.8	45.8	137.9	65.1	0.00	0.00	0.00
2,700.0	9.77	71.64	2,687.3	51.1	154.0	72.8	0.00	0.00	0.00
2,800.0	9.77	71.64	2,785.9	56.5	170.1	80.4	0.00	0.00	0.00
2,900.0	9.77	71.64	2,884.4	61.8	186.2	88.0	0.00	0.00	0.00
3,000.0	9.77	71.64	2,983.0	67.1	202.3	95.6	0.00	0.00	0.00
3,100.0	9.77	71.64	3,081.5	72.5	218.4	103.2	0.00	0.00	0.00
3,200.0	9.77	71.64	3,180.1	77.8	234.5	110.8	0.00	0.00	0.00
3,300.0	9.77	71.64	3,278.6	83.2	250.6	118.4	0.00	0.00	0.00
3,400.0	9.77	71.64	3,377.2	88.5	266.7	126.0	0.00	0.00	0.00
3,500.0	9.77	71.64	3,475.7	93.9	282.8	133.6	0.00	0.00	0.00
3,600.0	9.77	71.64	3,574.3	99.2	298.9	141.2	0.00	0.00	0.00
3,700.0	9.77	71.64	3,672.8	104.5	315.0	148.8	0.00	0.00	0.00
3,800.0	9.77	71.64	3,771.4	109.9	331.1	156.4	0.00	0.00	0.00
3,900.0	9.77	71.64	3,869.9	115.2	347.2	164.0	0.00	0.00	0.00
4,000.0	9.77	71.64	3,968.5	120.6	363.3	171.6	0.00	0.00	0.00
4,100.0	9.77	71.64	4,067.0	125.9	379.4	179.3	0.00	0.00	0.00
4,200.0	9.77	71.64	4,165.6	131.3	395.5	186.9	0.00	0.00	0.00
4,300.0	9.77	71.64	4,264.1	136.6	411.6	194.5	0.00	0.00	0.00
4,400.0	9.77	71.64	4,362.7	142.0	427.7	202.1	0.00	0.00	0.00
4,500.0	9.77	71.64	4,461.2	147.3	443.8	209.7	0.00	0.00	0.00
4,600.0	9.77	71.64	4,559.8	152.6	459.9	217.3	0.00	0.00	0.00
4,700.0	9.77	71.64	4,658.3	158.0	476.0	224.9	0.00	0.00	0.00
4,800.0	9.77	71.64	4,756.9	163.3	492.1	232.5	0.00	0.00	0.00
4,900.0	9.77	71.64	4,855.4	168.7	508.2	240.1	0.00	0.00	0.00
5,000.0	9.77	71.64	4,954.0	174.0	524.4	247.7	0.00	0.00	0.00

<b>Database:</b>	Landmark	<b>Local Co-ordinate Reference:</b>	Well SRC Gilbert 42-14-11CHZ
<b>Company:</b>	Synergy Resources	<b>TVD Reference:</b>	WELL @ 4847.0ft (RKB-12')
<b>Project:</b>	SEC.14-T5N-R66W	<b>MD Reference:</b>	WELL @ 4847.0ft (RKB-12')
<b>Site:</b>	SRC Gilbert 42-14-11NHZ Pad	<b>North Reference:</b>	True
	Sec.14-T5N-R66W		
<b>Well:</b>	SRC Gilbert 42-14-11CHZ	<b>Survey Calculation Method:</b>	Minimum Curvature
<b>Wellbore:</b>	Wellbore #1		
<b>Design:</b>	Plan #2 (7-24-14)		

Planned Survey									
Measured Depth (ft)	Inclination (°)	Azimuth (°)	Vertical Depth (ft)	+N/-S (ft)	+E/-W (ft)	Vertical Section (ft)	Dogleg Rate (°/100ft)	Build Rate (°/100ft)	Turn Rate (°/100ft)
5,100.0	9.77	71.64	5,052.5	179.4	540.5	255.3	0.00	0.00	0.00
5,200.0	9.77	71.64	5,151.1	184.7	556.6	262.9	0.00	0.00	0.00
5,300.0	9.77	71.64	5,249.6	190.0	572.7	270.5	0.00	0.00	0.00
5,400.0	9.77	71.64	5,348.2	195.4	588.8	278.1	0.00	0.00	0.00
5,500.0	9.77	71.64	5,446.7	200.7	604.9	285.7	0.00	0.00	0.00
5,600.0	9.77	71.64	5,545.3	206.1	621.0	293.4	0.00	0.00	0.00
5,700.0	9.77	71.64	5,643.8	211.4	637.1	301.0	0.00	0.00	0.00
5,800.0	9.77	71.64	5,742.4	216.8	653.2	308.6	0.00	0.00	0.00
5,900.0	9.77	71.64	5,840.9	222.1	669.3	316.2	0.00	0.00	0.00
6,000.0	9.77	71.64	5,939.5	227.5	685.4	323.8	0.00	0.00	0.00
6,100.0	9.77	71.64	6,038.0	232.8	701.5	331.4	0.00	0.00	0.00
6,177.0	9.77	71.64	6,114.0	236.9	713.9	337.3	0.00	0.00	0.00
6,200.0	9.31	71.64	6,136.6	238.1	717.5	339.0	2.00	-2.00	0.00
6,300.0	7.31	71.64	6,235.5	242.7	731.2	345.4	2.00	-2.00	0.00
6,400.0	5.31	71.64	6,334.9	246.1	741.6	350.4	2.00	-2.00	0.00
6,500.0	3.31	71.64	6,434.6	248.5	748.8	353.7	2.00	-2.00	0.00
6,600.0	1.31	71.64	6,534.6	249.8	752.6	355.5	2.00	-2.00	0.00
6,665.4	0.00	0.00	6,600.0	250.0	753.3	355.9	2.00	-2.00	0.00
6,700.0	0.00	0.00	6,634.6	250.0	753.3	355.9	0.00	0.00	0.00
6,797.2	0.00	0.00	6,731.8	250.0	753.3	355.9	0.00	0.00	0.00
<b>KOP #2</b>									
6,800.0	0.22	360.00	6,734.6	250.0	753.3	355.9	7.86	7.86	0.00
6,900.0	8.22	360.00	6,834.2	257.4	753.3	363.2	8.00	8.00	0.00
7,000.0	16.22	360.00	6,931.9	278.5	753.3	384.1	8.00	8.00	0.00
7,100.0	24.22	360.00	7,025.6	313.0	753.3	418.3	8.00	8.00	0.00
7,200.0	32.22	360.00	7,113.7	360.3	753.3	465.0	8.00	8.00	0.00
7,300.0	40.22	360.00	7,194.3	419.3	753.3	523.4	8.00	8.00	0.00
7,400.0	48.22	360.00	7,265.9	489.0	753.3	592.4	8.00	8.00	0.00
7,500.0	56.22	360.00	7,327.1	568.0	753.3	670.5	8.00	8.00	0.00
7,600.0	64.22	360.00	7,376.7	654.7	753.3	756.4	8.00	8.00	0.00
7,700.0	72.22	360.00	7,413.8	747.5	753.3	848.2	8.00	8.00	0.00
7,800.0	80.22	360.00	7,437.6	844.5	753.3	944.2	8.00	8.00	0.00
7,900.0	88.22	360.00	7,447.7	944.0	753.3	1,042.6	8.00	8.00	0.00
7,922.3	90.00	360.00	7,448.0	966.2	753.3	1,064.7	7.98	7.98	0.00
<b>End of Build - 7"</b>									
8,000.0	90.00	360.00	7,448.0	1,043.9	753.3	1,141.5	0.00	0.00	0.00
8,100.0	90.00	360.00	7,448.0	1,143.9	753.3	1,240.5	0.00	0.00	0.00
8,200.0	90.00	360.00	7,448.0	1,243.9	753.3	1,339.5	0.00	0.00	0.00
8,300.0	90.00	360.00	7,448.0	1,343.9	753.3	1,438.4	0.00	0.00	0.00
8,400.0	90.00	360.00	7,448.0	1,443.9	753.3	1,537.4	0.00	0.00	0.00
8,500.0	90.00	360.00	7,448.0	1,543.9	753.3	1,636.3	0.00	0.00	0.00
8,600.0	90.00	360.00	7,448.0	1,643.9	753.3	1,735.3	0.00	0.00	0.00
8,700.0	90.00	360.00	7,448.0	1,743.9	753.3	1,834.2	0.00	0.00	0.00
8,800.0	90.00	360.00	7,448.0	1,843.9	753.3	1,933.2	0.00	0.00	0.00
8,900.0	90.00	360.00	7,448.0	1,943.9	753.3	2,032.2	0.00	0.00	0.00
9,000.0	90.00	360.00	7,448.0	2,043.9	753.3	2,131.1	0.00	0.00	0.00
9,100.0	90.00	360.00	7,448.0	2,143.9	753.3	2,230.1	0.00	0.00	0.00
9,200.0	90.00	360.00	7,448.0	2,243.9	753.3	2,329.0	0.00	0.00	0.00
9,300.0	90.00	360.00	7,448.0	2,343.9	753.3	2,428.0	0.00	0.00	0.00
9,400.0	90.00	360.00	7,448.0	2,443.9	753.3	2,527.0	0.00	0.00	0.00
9,500.0	90.00	360.00	7,448.0	2,543.9	753.3	2,625.9	0.00	0.00	0.00
9,600.0	90.00	360.00	7,448.0	2,643.9	753.3	2,724.9	0.00	0.00	0.00
9,700.0	90.00	360.00	7,448.0	2,743.9	753.3	2,823.8	0.00	0.00	0.00

<b>Database:</b>	Landmark	<b>Local Co-ordinate Reference:</b>	Well SRC Gilbert 42-14-11CHZ
<b>Company:</b>	Synergy Resources	<b>TVD Reference:</b>	WELL @ 4847.0ft (RKB-12')
<b>Project:</b>	SEC.14-T5N-R66W	<b>MD Reference:</b>	WELL @ 4847.0ft (RKB-12')
<b>Site:</b>	SRC Gilbert 42-14-11NHZ Pad	<b>North Reference:</b>	True
	Sec.14-T5N-R66W		
<b>Well:</b>	SRC Gilbert 42-14-11CHZ	<b>Survey Calculation Method:</b>	Minimum Curvature
<b>Wellbore:</b>	Wellbore #1		
<b>Design:</b>	Plan #2 (7-24-14)		

Planned Survey										
Measured Depth (ft)	Inclination (°)	Azimuth (°)	Vertical Depth (ft)	+N/-S (ft)	+E/-W (ft)	Vertical Section (ft)	Dogleg Rate (°/100ft)	Build Rate (°/100ft)	Turn Rate (°/100ft)	
9,800.0	90.00	360.00	7,448.0	2,843.9	753.3	2,922.8	0.00	0.00	0.00	
9,900.0	90.00	360.00	7,448.0	2,943.9	753.3	3,021.7	0.00	0.00	0.00	
10,000.0	90.00	360.00	7,448.0	3,043.9	753.3	3,120.7	0.00	0.00	0.00	
10,100.0	90.00	360.00	7,448.0	3,143.9	753.3	3,219.7	0.00	0.00	0.00	
10,200.0	90.00	360.00	7,448.0	3,243.9	753.3	3,318.6	0.00	0.00	0.00	
10,300.0	90.00	360.00	7,448.0	3,343.9	753.3	3,417.6	0.00	0.00	0.00	
10,400.0	90.00	360.00	7,448.0	3,443.9	753.3	3,516.5	0.00	0.00	0.00	
10,500.0	90.00	360.00	7,448.0	3,543.9	753.3	3,615.5	0.00	0.00	0.00	
10,600.0	90.00	360.00	7,448.0	3,643.9	753.3	3,714.4	0.00	0.00	0.00	
10,700.0	90.00	360.00	7,448.0	3,743.9	753.3	3,813.4	0.00	0.00	0.00	
10,800.0	90.00	360.00	7,448.0	3,843.9	753.3	3,912.4	0.00	0.00	0.00	
10,900.0	90.00	360.00	7,448.0	3,943.9	753.3	4,011.3	0.00	0.00	0.00	
11,000.0	90.00	360.00	7,448.0	4,043.9	753.3	4,110.3	0.00	0.00	0.00	
11,100.0	90.00	360.00	7,448.0	4,143.9	753.3	4,209.2	0.00	0.00	0.00	
11,200.0	90.00	360.00	7,448.0	4,243.9	753.3	4,308.2	0.00	0.00	0.00	
11,300.0	90.00	360.00	7,448.0	4,343.9	753.3	4,407.1	0.00	0.00	0.00	
11,400.0	90.00	360.00	7,448.0	4,443.9	753.3	4,506.1	0.00	0.00	0.00	
11,500.0	90.00	360.00	7,448.0	4,543.9	753.3	4,605.1	0.00	0.00	0.00	
11,600.0	90.00	360.00	7,448.0	4,643.9	753.3	4,704.0	0.00	0.00	0.00	
11,700.0	90.00	360.00	7,448.0	4,743.9	753.3	4,803.0	0.00	0.00	0.00	
11,800.0	90.00	360.00	7,448.0	4,843.9	753.3	4,901.9	0.00	0.00	0.00	
11,900.0	90.00	360.00	7,448.0	4,943.9	753.3	5,000.9	0.00	0.00	0.00	
12,000.0	90.00	360.00	7,448.0	5,043.9	753.3	5,099.8	0.00	0.00	0.00	
12,100.0	90.00	360.00	7,448.0	5,143.9	753.3	5,198.8	0.00	0.00	0.00	
12,132.2	90.00	360.00	7,448.0	5,176.2	753.3	5,230.7	0.00	0.00	0.00	

Targets										
Target Name	Dip Angle (°)	Dip Dir. (°)	TVD (ft)	+N/-S (ft)	+E/-W (ft)	Northing (ft)	Easting (ft)	Latitude	Longitude	
BHL 2418'FSL & 1475' - hit/miss target - plan hits target center - Point	0.00	0.00	7,448.0	5,176.2	753.3	1,394,286.72	3,211,514.26	40.413232	-104.740394	
SHL 2483'FSL & 226 - plan hits target center - Point	0.00	0.00	1.0	0.0	0.0	1,389,104.53	3,210,805.24	40.399024	-104.743099	

Casing Points						
Measured Depth (ft)	Vertical Depth (ft)	Name	Casing Diameter (")	Hole Diameter (")		
7,922.3	7,448.0	7"	7	7-1/2		

<b>Database:</b>	Landmark	<b>Local Co-ordinate Reference:</b>	Well SRC Gilbert 42-14-11CHZ
<b>Company:</b>	Synergy Resources	<b>TVD Reference:</b>	WELL @ 4847.0ft (RKB-12')
<b>Project:</b>	SEC.14-T5N-R66W	<b>MD Reference:</b>	WELL @ 4847.0ft (RKB-12')
<b>Site:</b>	SRC Gilbert 42-14-11NHZ Pad	<b>North Reference:</b>	True
	Sec.14-T5N-R66W		
<b>Well:</b>	SRC Gilbert 42-14-11CHZ	<b>Survey Calculation Method:</b>	Minimum Curvature
<b>Wellbore:</b>	Wellbore #1		
<b>Design:</b>	Plan #2 (7-24-14)		

Plan Annotations				
Measured Depth (ft)	Vertical Depth (ft)	Local Coordinates		Comment
		+N/-S (ft)	+E/-W (ft)	
1,500.0	1,500.0	0.0	0.0	KOP #1
6,797.2	6,731.8	250.0	753.3	KOP #2
7,922.3	7,448.0	966.2	753.3	End of Build



## **Synergy Resources**

**SEC.14-T5N-R66W**

**SRC Gilbert 42-14-11NHZ Pad Sec.14-T5N-R66W**

**SRC Gilbert 42-14-11CHZ**

**Wellbore #1**

**Plan #2 (7-24-14)**

## **Anticollision Report**

**31 July, 2014**





<b>Company:</b>	Synergy Resources	<b>Local Co-ordinate Reference:</b>	Well SRC Gilbert 42-14-11CHZ
<b>Project:</b>	SEC.14-T5N-R66W	<b>TVD Reference:</b>	WELL @ 4847.0ft (RKB-12')
<b>Reference Site:</b>	SRC Gilbert 42-14-11NHZ Pad Sec.14-T5N-R66W	<b>MD Reference:</b>	WELL @ 4847.0ft (RKB-12')
<b>Site Error:</b>	0.0ft	<b>North Reference:</b>	True
<b>Reference Well:</b>	SRC Gilbert 42-14-11CHZ	<b>Survey Calculation Method:</b>	Minimum Curvature
<b>Well Error:</b>	0.0ft	<b>Output errors are at</b>	2.00 sigma
<b>Reference Wellbore</b>	Wellbore #1	<b>Database:</b>	Landmark
<b>Reference Design:</b>	Plan #2 (7-24-14)	<b>Offset TVD Reference:</b>	Offset Datum

Offset Design SRC Gilbert 42-14-11NHZ Pad Sec.14-T5N-R66W - SRC Gilbert 12-14-11CHZ - Wellbore #1 - Plan #1													Offset Site Error:	0.0 ft
Survey Program: 0-MWD													Offset Well Error:	0.0 ft
Measured Depth (ft)	Vertical Depth (ft)	Measured Depth (ft)	Vertical Depth (ft)	Semi Major Axis		Highside Toolface (°)	Offset Wellbore Centre		Distance		Minimum Separation (ft)	Separation Factor	Warning	
Reference	Offset	Reference	Offset	(ft)	(ft)		+N/-S (ft)	+E/-W (ft)	Between Centres (ft)	Between Ellipses (ft)				
1,000.0	1,000.0	981.1	977.1	2.1	2.3	-86.55	7.6	-125.7	128.6	124.1	4.45	28.882		
1,100.0	1,100.0	1,074.2	1,068.0	2.4	2.7	-86.10	9.9	-145.8	150.3	145.3	5.05	29.776		
1,200.0	1,200.0	1,165.9	1,156.8	2.6	3.2	-85.72	12.6	-168.5	175.2	169.5	5.69	30.797		
1,300.0	1,300.0	1,255.9	1,243.3	2.8	3.6	-85.41	15.5	-193.5	203.1	196.7	6.37	31.874		
1,400.0	1,400.0	1,344.3	1,327.3	3.0	4.2	-85.15	18.7	-220.6	234.0	226.9	7.10	32.963		
1,500.0	1,500.0	1,430.9	1,408.8	3.3	4.7	-84.93	22.1	-249.6	267.7	259.9	7.87	34.042		
1,600.0	1,600.0	1,514.9	1,487.0	3.5	5.3	-156.19	25.7	-280.2	305.8	298.8	7.04	43.468		
1,700.0	1,699.8	1,600.8	1,566.1	3.7	6.0	-156.00	29.6	-313.3	349.1	341.6	7.48	46.652		
1,800.0	1,799.5	1,689.3	1,647.5	3.9	6.7	-155.96	33.7	-347.8	395.5	387.6	7.91	49.972		
1,900.0	1,898.7	1,776.3	1,727.5	4.1	7.4	-156.01	37.6	-381.7	444.7	436.4	8.33	53.369		
2,000.0	1,997.5	1,861.6	1,806.0	4.4	8.1	-156.17	41.5	-414.9	496.7	487.9	8.74	56.801		
2,100.0	2,096.0	1,946.2	1,883.9	4.7	8.8	-156.71	45.4	-447.9	549.8	540.6	9.20	59.757		
2,200.0	2,194.6	2,030.9	1,961.7	5.0	9.5	-157.16	49.3	-480.8	602.9	593.2	9.66	62.381		
2,300.0	2,293.1	2,115.5	2,039.6	5.3	10.2	-157.54	53.1	-513.8	656.0	645.9	10.14	64.719		
2,400.0	2,391.7	2,200.1	2,117.5	5.6	10.9	-157.87	57.0	-546.7	709.2	698.6	10.62	66.811		
2,500.0	2,490.2	2,284.8	2,195.3	5.9	11.6	-158.14	60.9	-579.7	762.4	751.3	11.10	68.687		
2,600.0	2,588.8	2,369.4	2,273.2	6.3	12.3	-158.38	64.8	-612.6	815.6	804.0	11.59	70.379		
2,700.0	2,687.3	2,454.0	2,351.0	6.6	13.0	-158.59	68.6	-645.6	868.8	856.7	12.08	71.911		
2,800.0	2,785.9	2,538.7	2,428.9	7.0	13.7	-158.78	72.5	-678.5	922.0	909.4	12.58	73.302		
2,900.0	2,884.4	2,623.3	2,506.8	7.3	14.5	-158.95	76.4	-711.5	975.2	962.1	13.08	74.569		

SRC Gilbert 42-14-11NHZ Pad Sec.14-T5N-R66W - SRC Gilbert 12-14-11NHZ - Wellbore #1 - Plan #1													Offset Site Error:	0.0 ft
Survey Program: 0-MWD													Offset Well Error:	0.0 ft
Reference		Offset		Semi Major Axis			Distance							
Measured Depth	Vertical Depth	Measured Depth	Vertical Depth	Reference	Offset	Highside Toolface	Offset Wellbore Centre		Between Centres	Between Ellipses	Minimum Separation	Separation Factor	Warning	
(ft)	(ft)	(ft)	(ft)	(ft)	(ft)	(°)	+N/-S (ft)	+E/-W (ft)	(ft)	(ft)	(ft)			
0.0	0.0	2.0	2.0	0.0	0.0	-89.54	0.7	-90.0	90.0	90.0	0.00	N/A		
100.0	100.0	102.0	102.0	0.1	0.1	-89.54	0.7	-90.0	90.0	89.7	0.23	392.420		
166.0	166.0	168.0	168.0	0.3	0.3	-89.54	0.7	-90.0	90.0	89.4	0.53	171.075 CC		
200.0	200.0	201.9	201.9	0.3	0.3	-89.54	0.7	-90.0	90.0	89.3	0.68	132.600 ES		
300.0	300.0	300.0	300.0	0.6	0.6	-89.46	0.9	-91.7	91.7	90.6	1.11	82.279		
400.0	400.0	395.6	395.4	0.8	0.8	-89.23	1.3	-96.6	96.8	95.3	1.55	62.339		
500.0	500.0	491.8	491.3	1.0	1.0	-88.90	2.0	-104.8	105.3	103.3	2.02	52.194		
600.0	600.0	587.4	586.2	1.2	1.3	-88.52	3.0	-116.0	117.1	114.6	2.51	46.627		
700.0	700.0	682.2	679.9	1.5	1.6	-88.13	4.3	-130.3	132.2	129.2	3.04	43.479		
800.0	800.0	775.8	772.0	1.7	1.9	-87.76	5.8	-147.4	150.6	146.9	3.61	41.700		
900.0	900.0	868.3	862.3	1.9	2.3	-87.43	7.5	-167.3	172.1	167.9	4.22	40.758		
1,000.0	1,000.0	959.4	950.5	2.1	2.8	-87.14	9.5	-189.6	196.7	191.9	4.88	40.341		
1,100.0	1,100.0	1,048.9	1,036.5	2.4	3.3	-86.89	11.6	-214.3	224.4	218.8	5.57	40.263 SF		
1,200.0	1,200.0	1,136.7	1,120.1	2.6	3.8	-86.68	14.0	-241.2	255.1	248.8	6.31	40.410		
1,300.0	1,300.0	1,222.8	1,201.2	2.8	4.4	-86.50	16.5	-269.9	288.6	281.5	7.09	40.710		
1,400.0	1,400.0	1,306.9	1,279.6	3.0	5.0	-86.34	19.2	-300.4	324.9	317.0	7.90	41.119		
1,500.0	1,500.0	1,389.1	1,355.3	3.3	5.7	-86.21	22.0	-332.3	363.9	355.2	8.75	41.568		
1,600.0	1,600.0	1,468.7	1,427.6	3.5	6.4	-157.47	24.9	-365.3	407.0	399.8	7.15	56.891		
1,700.0	1,699.8	1,544.8	1,495.9	3.7	7.1	-157.18	27.8	-398.6	455.3	447.7	7.58	60.042		
1,800.0	1,799.5	1,617.2	1,560.1	3.9	7.8	-156.95	30.8	-432.1	508.6	500.7	7.99	63.645		
1,900.0	1,898.7	1,685.7	1,620.0	4.1	8.5	-156.74	33.7	-465.2	566.7	558.3	8.38	67.624		
2,000.0	1,997.5	1,750.2	1,675.6	4.4	9.2	-156.58	36.5	-497.7	629.2	620.4	8.75	71.869		
2,100.0	2,096.0	1,813.3	1,729.4	4.7	9.9	-156.96	39.4	-530.6	694.3	685.2	9.17	75.726		
2,200.0	2,194.6	1,888.5	1,793.1	5.0	10.8	-157.34	42.9	-570.4	760.1	750.5	9.62	78.993		
2,300.0	2,293.1	1,963.7	1,856.8	5.3	11.7	-157.66	46.4	-610.3	826.0	815.9	10.08	81.956		
2,400.0	2,391.7	2,038.9	1,920.4	5.6	12.6	-157.93	49.9	-650.1	891.8	881.3	10.54	84.624		
2,500.0	2,490.2	2,114.1	1,984.1	5.9	13.5	-158.17	53.4	-689.9	957.7	946.7	11.00	87.023		

<b>Company:</b>	Synergy Resources	<b>Local Co-ordinate Reference:</b>	Well SRC Gilbert 42-14-11CHZ
<b>Project:</b>	SEC.14-T5N-R66W	<b>TVD Reference:</b>	WELL @ 4847.0ft (RKB-12')
<b>Reference Site:</b>	SRC Gilbert 42-14-11NHZ Pad Sec.14-T5N-R66W	<b>MD Reference:</b>	WELL @ 4847.0ft (RKB-12')
<b>Site Error:</b>	0.0ft	<b>North Reference:</b>	True
<b>Reference Well:</b>	SRC Gilbert 42-14-11CHZ	<b>Survey Calculation Method:</b>	Minimum Curvature
<b>Well Error:</b>	0.0ft	<b>Output errors are at</b>	2.00 sigma
<b>Reference Wellbore</b>	Wellbore #1	<b>Database:</b>	Landmark
<b>Reference Design:</b>	Plan #2 (7-24-14)	<b>Offset TVD Reference:</b>	Offset Datum

Offset Design													Offset Site Error:	0.0 ft
Survey Program: 0-MWD													Offset Well Error:	0.0 ft
Reference		Offset		Semi Major Axis		Highside Toolface (°)	Distance		Between Centres (ft)	Between Ellipses (ft)	Minimum Separation (ft)	Separation Factor	Warning	
Measured Depth (ft)	Vertical Depth (ft)	Measured Depth (ft)	Vertical Depth (ft)	Reference (ft)	Offset (ft)		Offset Wellbore Centre +N/-S (ft)	+E/-W (ft)						
0.0	0.0	0.0	0.0	0.0	0.0	90.47	-0.4	44.8	44.8					
100.0	100.0	100.0	100.0	0.1	0.1	90.47	-0.4	44.8	44.8	44.6	0.22	199.515		
200.0	200.0	200.0	200.0	0.3	0.3	90.47	-0.4	44.8	44.8	44.2	0.67	66.505		
300.0	300.0	300.0	300.0	0.6	0.6	90.47	-0.4	44.8	44.8	43.7	1.12	39.903		
400.0	400.0	400.0	400.0	0.8	0.8	90.47	-0.4	44.8	44.8	43.3	1.57	28.502		
500.0	500.0	500.0	500.0	1.0	1.0	90.47	-0.4	44.8	44.8	42.8	2.02	22.168		
600.0	600.0	600.1	600.1	1.2	1.2	88.24	1.4	44.6	44.7	42.2	2.47	18.058		
674.6	674.6	674.7	674.6	1.4	1.4	83.64	4.9	44.3	44.5	41.7	2.81	15.824 CC		
700.0	700.0	700.0	699.9	1.5	1.5	81.51	6.6	44.1	44.6	41.6	2.93	15.210 ES		
800.0	800.0	799.5	798.9	1.7	1.7	70.61	15.2	43.1	45.7	42.3	3.39	13.495		
900.0	900.0	898.4	897.1	1.9	2.0	57.14	27.0	41.8	49.8	46.0	3.85	12.947		
1,000.0	1,000.0	997.5	995.4	2.1	2.2	45.45	39.7	40.4	56.8	52.5	4.31	13.199		
1,100.0	1,100.0	1,096.7	1,093.8	2.4	2.5	36.58	52.5	39.0	65.7	60.9	4.78	13.739		
1,200.0	1,200.0	1,195.8	1,192.1	2.6	2.8	29.91	65.3	37.5	75.7	70.4	5.27	14.364		
1,300.0	1,300.0	1,295.0	1,290.4	2.8	3.1	24.84	78.0	36.1	86.5	80.7	5.77	14.986		
1,400.0	1,400.0	1,394.2	1,388.7	3.0	3.4	20.92	90.8	34.7	97.8	91.5	6.28	15.569		
1,500.0	1,500.0	1,493.3	1,487.1	3.3	3.7	17.82	103.5	33.3	109.5	102.7	6.80	16.102		
1,600.0	1,600.0	1,592.5	1,585.4	3.5	4.0	-56.83	116.3	31.9	120.5	113.4	7.11	16.947		
1,700.0	1,699.8	1,691.7	1,683.7	3.7	4.4	-60.63	129.0	30.4	130.0	122.5	7.54	17.243		
1,800.0	1,799.5	1,790.7	1,781.9	3.9	4.7	-65.17	141.7	29.0	138.6	130.7	7.98	17.383		
1,900.0	1,898.7	1,889.4	1,879.8	4.1	5.0	-70.39	154.4	27.6	146.9	138.5	8.43	17.434		
2,000.0	1,997.5	1,987.8	1,977.4	4.4	5.3	-76.21	167.1	26.2	155.4	146.5	8.90	17.455		
2,100.0	2,096.0	2,086.0	2,074.7	4.7	5.6	-81.96	179.7	24.8	165.3	155.9	9.42	17.549		
2,200.0	2,194.6	2,184.1	2,172.1	5.0	5.9	-87.03	192.3	23.4	176.7	166.7	9.97	17.731		
2,300.0	2,293.1	2,282.3	2,269.4	5.3	6.2	-91.48	205.0	22.0	189.3	178.8	10.53	17.973		
2,400.0	2,391.7	2,380.5	2,366.8	5.6	6.6	-95.35	217.6	20.6	202.9	191.8	11.12	18.252		
2,500.0	2,490.2	2,481.3	2,466.8	5.9	6.9	-98.85	230.3	19.1	217.1	205.4	11.71	18.542		
2,600.0	2,588.8	2,587.3	2,572.3	6.3	7.1	-102.37	240.6	18.0	229.4	217.1	12.28	18.686		
2,700.0	2,687.3	2,693.7	2,678.4	6.6	7.3	-105.97	247.1	17.3	239.1	226.3	12.83	18.629		
2,800.0	2,785.9	2,800.1	2,784.8	7.0	7.5	-109.73	249.6	17.0	246.5	233.1	13.38	18.416		
2,900.0	2,884.4	2,899.7	2,884.4	7.3	7.7	-113.35	249.6	17.0	252.8	238.9	13.92	18.161		
3,000.0	2,983.0	2,998.3	2,983.0	7.7	7.8	-116.74	249.6	17.0	260.1	245.6	14.46	17.981		
3,100.0	3,081.5	3,096.8	3,081.5	8.0	8.0	-119.94	249.6	17.0	268.2	253.2	15.00	17.888		
3,200.0	3,180.1	3,195.4	3,180.1	8.4	8.2	-122.95	249.6	17.0	277.2	261.7	15.51	17.868		
3,300.0	3,278.6	3,293.9	3,278.6	8.7	8.4	-125.77	249.6	17.0	286.9	270.8	16.02	17.909		
3,400.0	3,377.2	3,392.5	3,377.2	9.1	8.6	-128.40	249.6	17.0	297.2	280.7	16.51	17.999		
3,500.0	3,475.7	3,491.0	3,475.7	9.5	8.7	-130.86	249.6	17.0	308.1	291.1	16.99	18.129		
3,600.0	3,574.3	3,589.6	3,574.3	9.9	8.9	-133.14	249.6	17.0	319.5	302.1	17.47	18.292		
3,700.0	3,672.8	3,688.1	3,672.8	10.2	9.1	-135.26	249.6	17.0	331.5	313.5	17.94	18.480		
3,800.0	3,771.4	3,786.7	3,771.4	10.6	9.3	-137.24	249.6	17.0	343.8	325.4	18.40	18.689		
3,900.0	3,869.9	3,885.2	3,869.9	11.0	9.5	-139.08	249.6	17.0	356.5	337.7	18.85	18.912		
4,000.0	3,968.5	3,983.8	3,968.5	11.3	9.7	-140.79	249.6	17.0	369.6	350.3	19.30	19.147		
4,100.0	4,067.0	4,082.3	4,067.0	11.7	9.9	-142.39	249.6	17.0	383.0	363.2	19.75	19.390		
4,200.0	4,165.6	4,180.9	4,165.6	12.1	10.1	-143.88	249.6	17.0	396.6	376.4	20.20	19.639		
4,300.0	4,264.1	4,279.4	4,264.1	12.5	10.3	-145.27	249.6	17.0	410.5	389.9	20.64	19.890		
4,400.0	4,362.7	4,378.0	4,362.7	12.9	10.5	-146.57	249.6	17.0	424.6	403.5	21.08	20.143		
4,500.0	4,461.2	4,476.5	4,461.2	13.2	10.7	-147.78	249.6	17.0	438.9	417.4	21.52	20.396		
4,600.0	4,559.8	4,575.1	4,559.8	13.6	10.9	-148.92	249.6	17.0	453.4	431.5	21.96	20.648		
4,700.0	4,658.3	4,673.6	4,658.3	14.0	11.1	-149.99	249.6	17.0	468.1	445.7	22.40	20.897		
4,800.0	4,756.9	4,772.2	4,756.9	14.4	11.3	-150.99	249.6	17.0	482.9	460.1	22.84	21.144		
4,900.0	4,855.4	4,870.7	4,855.4	14.8	11.5	-151.94	249.6	17.0	497.9	474.6	23.28	21.387		

CC - Min centre to center distance or convergent point, SF - min separation factor, ES - min ellipse separation

<b>Company:</b>	Synergy Resources	<b>Local Co-ordinate Reference:</b>	Well SRC Gilbert 42-14-11CHZ
<b>Project:</b>	SEC.14-T5N-R66W	<b>TVD Reference:</b>	WELL @ 4847.0ft (RKB-12')
<b>Reference Site:</b>	SRC Gilbert 42-14-11NHZ Pad Sec.14-T5N-R66W	<b>MD Reference:</b>	WELL @ 4847.0ft (RKB-12')
<b>Site Error:</b>	0.0ft	<b>North Reference:</b>	True
<b>Reference Well:</b>	SRC Gilbert 42-14-11CHZ	<b>Survey Calculation Method:</b>	Minimum Curvature
<b>Well Error:</b>	0.0ft	<b>Output errors are at</b>	2.00 sigma
<b>Reference Wellbore</b>	Wellbore #1	<b>Database:</b>	Landmark
<b>Reference Design:</b>	Plan #2 (7-24-14)	<b>Offset TVD Reference:</b>	Offset Datum

Offset Design													Offset Site Error:	0.0 ft
Survey Program: 0-MWD													Offset Well Error:	0.0 ft
Reference		Offset		Semi Major Axis		Highside Toolface (°)	Distance		Between Centres (ft)	Between Ellipses (ft)	Minimum Separation (ft)	Separation Factor	Warning	
Measured Depth (ft)	Vertical Depth (ft)	Measured Depth (ft)	Vertical Depth (ft)	Reference (ft)	Offset (ft)		Offset Wellbore Centre +N/-S (ft)	+E/-W (ft)						
5,000.0	4,954.0	4,969.3	4,954.0	15.2	11.7	-152.82	249.6	17.0	513.0	489.2	23.72	21.626		
5,100.0	5,052.5	5,067.8	5,052.5	15.5	11.9	-153.66	249.6	17.0	528.2	504.0	24.16	21.861		
5,200.0	5,151.1	5,166.4	5,151.1	15.9	12.1	-154.45	249.6	17.0	543.5	518.9	24.60	22.091		
5,300.0	5,249.6	5,264.9	5,249.6	16.3	12.3	-155.20	249.6	17.0	558.8	533.8	25.04	22.316		
5,400.0	5,348.2	5,363.5	5,348.2	16.7	12.5	-155.91	249.6	17.0	574.3	548.8	25.48	22.537		
5,500.0	5,446.7	5,462.0	5,446.7	17.1	12.7	-156.58	249.6	17.0	589.9	564.0	25.93	22.752		
5,600.0	5,545.3	5,560.6	5,545.3	17.5	12.9	-157.22	249.6	17.0	605.5	579.2	26.37	22.963		
5,700.0	5,643.8	5,659.1	5,643.8	17.8	13.1	-157.82	249.6	17.0	621.2	594.4	26.81	23.168		
5,800.0	5,742.4	5,757.7	5,742.4	18.2	13.3	-158.40	249.6	17.0	637.0	609.8	27.26	23.369		
5,900.0	5,840.9	5,856.2	5,840.9	18.6	13.5	-158.95	249.6	17.0	652.9	625.2	27.70	23.565		
6,000.0	5,939.5	5,954.8	5,939.5	19.0	13.7	-159.47	249.6	17.0	668.7	640.6	28.15	23.755		
6,100.0	6,038.0	6,053.3	6,038.0	19.4	13.9	-159.96	249.6	17.0	684.7	656.1	28.60	23.941		
6,200.0	6,136.6	6,151.9	6,136.6	19.8	14.1	-160.46	249.6	17.0	700.6	671.5	29.06	24.111		
6,300.0	6,235.5	6,250.8	6,235.5	20.0	14.3	-160.94	249.6	17.0	714.2	684.7	29.51	24.200		
6,400.0	6,334.9	6,350.2	6,334.9	20.3	14.6	-161.29	249.6	17.0	724.6	694.7	29.94	24.200		
6,500.0	6,434.6	6,449.9	6,434.6	20.5	14.8	-161.52	249.6	17.0	731.8	701.4	30.34	24.116		
6,600.0	6,534.6	6,549.9	6,534.6	20.7	15.0	-161.65	249.6	17.0	735.6	704.9	30.71	23.951		
6,700.0	6,634.6	6,649.7	6,634.3	20.8	15.2	-89.77	253.0	17.0	736.3	705.2	31.11	23.671		
6,800.0	6,734.6	6,746.9	6,730.1	20.9	15.5	-88.52	269.0	17.0	736.6	704.9	31.66	23.266		
6,900.0	6,834.2	6,840.3	6,819.4	21.1	15.9	-86.83	296.4	17.0	737.5	705.2	32.33	22.814		
7,000.0	6,931.9	6,931.4	6,902.2	21.4	16.3	-85.21	334.1	17.0	739.0	705.9	33.11	22.317		
7,100.0	7,025.6	7,020.3	6,977.8	21.6	16.8	-83.70	380.7	17.0	741.0	706.9	34.03	21.775		
7,200.0	7,113.7	7,107.5	7,045.8	22.0	17.3	-82.30	435.2	17.0	743.2	708.1	35.07	21.190		
7,300.0	7,194.3	7,193.0	7,105.6	22.4	18.0	-81.05	496.3	17.0	745.6	709.3	36.26	20.564		
7,400.0	7,265.9	7,277.3	7,157.0	22.9	18.7	-79.95	563.1	17.0	748.0	710.4	37.59	19.900		
7,500.0	7,327.1	7,360.6	7,199.7	23.5	19.6	-79.02	634.5	17.0	750.2	711.1	39.06	19.204		
7,600.0	7,376.7	7,443.0	7,233.6	24.2	20.5	-78.28	709.6	17.0	752.1	711.4	40.70	18.481		
7,700.0	7,413.8	7,524.8	7,258.4	25.1	21.5	-77.73	787.5	17.0	753.6	711.1	42.49	17.737		
7,800.0	7,437.6	7,606.2	7,274.2	26.1	22.6	-77.38	867.2	17.0	754.6	710.1	44.43	16.983		
7,900.0	7,447.7	7,687.4	7,280.8	27.2	23.7	-77.23	948.1	17.0	755.0	708.5	46.52	16.229		
8,000.0	7,448.0	7,783.2	7,281.0	28.4	25.1	-77.22	1,043.9	17.0	755.0	705.8	49.17	15.356		
8,100.0	7,448.0	7,883.2	7,281.0	29.7	26.6	-77.22	1,143.9	17.0	755.0	702.9	52.05	14.505		
8,200.0	7,448.0	7,983.2	7,281.0	31.1	28.1	-77.22	1,243.9	17.0	755.0	700.0	55.04	13.717		
8,300.0	7,448.0	8,083.2	7,281.0	32.5	29.7	-77.22	1,343.9	17.0	755.0	696.9	58.12	12.990		
8,400.0	7,448.0	8,183.2	7,281.0	34.0	31.4	-77.22	1,443.9	17.0	755.0	693.7	61.28	12.321		
8,500.0	7,448.0	8,283.2	7,281.0	35.5	33.0	-77.22	1,543.9	17.0	755.0	690.5	64.50	11.706		
8,600.0	7,448.0	8,383.2	7,281.0	37.1	34.7	-77.22	1,643.9	17.0	755.0	687.2	67.77	11.140		
8,700.0	7,448.0	8,483.2	7,281.0	38.7	36.4	-77.22	1,743.9	17.0	755.0	683.9	71.10	10.619		
8,800.0	7,448.0	8,583.2	7,281.0	40.3	38.2	-77.22	1,843.9	17.0	755.0	680.5	74.46	10.139		
8,900.0	7,448.0	8,683.2	7,281.0	41.9	39.9	-77.22	1,943.9	17.0	755.0	677.1	77.87	9.696		
9,000.0	7,448.0	8,783.2	7,281.0	43.6	41.7	-77.22	2,043.9	17.0	755.0	673.7	81.30	9.287		
9,100.0	7,448.0	8,883.2	7,281.0	45.3	43.5	-77.22	2,143.9	17.0	755.0	670.2	84.76	8.907		
9,200.0	7,448.0	8,983.2	7,281.0	47.0	45.3	-77.22	2,243.9	17.0	755.0	666.7	88.25	8.555		
9,300.0	7,448.0	9,083.2	7,281.0	48.7	47.1	-77.22	2,343.9	17.0	755.0	663.2	91.75	8.228		
9,400.0	7,448.0	9,183.2	7,281.0	50.5	48.9	-77.22	2,443.9	17.0	755.0	659.7	95.28	7.924		
9,500.0	7,448.0	9,283.2	7,281.0	52.2	50.7	-77.22	2,543.9	17.0	755.0	656.2	98.83	7.640		
9,600.0	7,448.0	9,383.2	7,281.0	54.0	52.5	-77.22	2,643.9	17.0	755.0	652.6	102.39	7.374		
9,700.0	7,448.0	9,483.2	7,281.0	55.8	54.3	-77.22	2,743.9	17.0	755.0	649.0	105.96	7.125		
9,800.0	7,448.0	9,583.2	7,281.0	57.5	56.2	-77.22	2,843.9	17.0	755.0	645.4	109.55	6.892		
9,900.0	7,448.0	9,683.2	7,281.0	59.3	58.0	-77.22	2,943.9	17.0	755.0	641.8	113.14	6.673		
10,000.0	7,448.0	9,783.2	7,281.0	61.1	59.9	-77.22	3,043.9	17.0	755.0	638.2	116.75	6.467		

CC - Min centre to center distance or convergent point, SF - min separation factor, ES - min ellipse separation

SRG Gilbert 42-14-11NHZ Pad Sec.14-T5N-R66W - SRC Gilbert 32-14-11HNZ - Wellbore #1 - Plan #1													Offset Site Error:	0.0 ft
Survey Program: 0-MWD													Offset Well Error:	0.0 ft
Reference		Offset		Semi Major Axis			Distance							
Measured Depth	Vertical Depth	Measured Depth	Vertical Depth	Reference	Offset	Highside Toolface	Offset Wellbore Centre		Between Centres	Between Ellipses	Minimum Separation	Separation Factor	Warning	
(ft)	(ft)	(ft)	(ft)	(ft)	(ft)	(°)	+N/-S (ft)	+E/-W (ft)	(ft)	(ft)	(ft)			
10,100.0	7,448.0	9,883.2	7,281.0	62.9	61.7	-77.22	3,143.9	17.0	755.0	634.6	120.37	6.272		
10,200.0	7,448.0	9,983.2	7,281.0	64.8	63.6	-77.22	3,243.9	17.0	755.0	631.0	123.99	6.089		
10,300.0	7,448.0	10,083.2	7,281.0	66.6	65.4	-77.22	3,343.9	17.0	755.0	627.3	127.63	5.915		
10,400.0	7,448.0	10,183.2	7,281.0	68.4	67.3	-77.22	3,443.9	17.0	755.0	623.7	131.27	5.751		
10,500.0	7,448.0	10,283.2	7,281.0	70.2	69.2	-77.22	3,543.9	17.0	755.0	620.1	134.92	5.596		
10,600.0	7,448.0	10,383.2	7,281.0	72.1	71.0	-77.22	3,643.9	17.0	755.0	616.4	138.57	5.448		
10,700.0	7,448.0	10,483.2	7,281.0	73.9	72.9	-77.22	3,743.9	17.0	755.0	612.7	142.23	5.308		
10,800.0	7,448.0	10,583.2	7,281.0	75.8	74.8	-77.22	3,843.9	17.0	755.0	609.1	145.89	5.175		
10,900.0	7,448.0	10,683.2	7,281.0	77.6	76.7	-77.22	3,943.9	17.0	755.0	605.4	149.56	5.048		
11,000.0	7,448.0	10,783.2	7,281.0	79.5	78.6	-77.22	4,043.9	17.0	755.0	601.7	153.24	4.927		
11,100.0	7,448.0	10,883.2	7,281.0	81.3	80.4	-77.22	4,143.9	17.0	755.0	598.1	156.91	4.811		
11,200.0	7,448.0	10,983.2	7,281.0	83.2	82.3	-77.22	4,243.9	17.0	755.0	594.4	160.60	4.701		
11,300.0	7,448.0	11,083.2	7,281.0	85.0	84.2	-77.22	4,343.9	17.0	755.0	590.7	164.28	4.596		
11,400.0	7,448.0	11,183.2	7,281.0	86.9	86.1	-77.22	4,443.9	17.0	755.0	587.0	167.97	4.495		
11,500.0	7,448.0	11,283.2	7,281.0	88.8	88.0	-77.22	4,543.9	17.0	755.0	583.3	171.66	4.398		
11,600.0	7,448.0	11,383.2	7,281.0	90.6	89.9	-77.22	4,643.9	17.0	755.0	579.6	175.36	4.305		
11,700.0	7,448.0	11,483.2	7,281.0	92.5	91.8	-77.22	4,743.9	17.0	755.0	575.9	179.05	4.216		
11,800.0	7,448.0	11,583.2	7,281.0	94.4	93.7	-77.22	4,843.9	17.0	755.0	572.2	182.75	4.131		
11,900.0	7,448.0	11,683.2	7,281.0	96.2	95.5	-77.22	4,943.9	17.0	755.0	568.5	186.46	4.049		
12,000.0	7,448.0	11,783.2	7,281.0	98.1	97.4	-77.22	5,043.9	17.0	755.0	564.8	190.16	3.970		
12,100.0	7,448.0	11,883.2	7,281.0	100.0	99.3	-77.22	5,143.9	17.0	755.0	561.1	193.87	3.894		
12,105.0	7,448.0	11,888.2	7,281.0	100.1	99.4	-77.22	5,149.0	17.0	755.0	560.9	194.05	3.890		
12,132.2	7,448.0	11,890.7	7,281.0	100.6	99.5	-77.22	5,151.4	17.0	755.4	560.8	194.60	3.882 SF		

SRC Gilbert 42-14-11NHZ Pad Sec.14-T5N-R66W - SRC Gilbert 42-14-11NHZ - Wellbore #1 - Plan #2													Offset Site Error:	0.0 ft
Survey Program: 0-MWD													Offset Well Error:	0.0 ft
Reference		Offset		Semi Major Axis			Distance		Between		Minimum	Separation	Warning	
Measured Depth	Vertical Depth	Measured Depth	Vertical Depth	Reference	Offset	Highside Toolface	Offset Wellbore Centre	Between Centres	Between Ellipses	Separation	Factor			
(ft)	(ft)	(ft)	(ft)	(ft)	(ft)	(°)	+N/-S (ft)	+E/-W (ft)	(ft)	(ft)	(ft)			
0.0	0.0	0.0	0.0	0.0	0.0	90.00	0.0	22.6	22.6					
100.0	100.0	100.0	100.0	0.1	0.1	90.00	0.0	22.6	22.6	22.3	0.22	100.374		
200.0	200.0	200.0	200.0	0.3	0.3	90.00	0.0	22.6	22.6	21.9	0.67	33.458		
300.0	300.0	300.0	300.0	0.6	0.6	90.00	0.0	22.6	22.6	21.4	1.12	20.075		
400.0	400.0	400.0	400.0	0.8	0.8	90.00	0.0	22.6	22.6	21.0	1.57	14.339		
500.0	500.0	500.0	500.0	1.0	1.0	90.00	0.0	22.6	22.6	20.5	2.02	11.153		
600.0	600.0	600.0	600.0	1.2	1.2	90.00	0.0	22.6	22.6	20.1	2.47	9.125		
700.0	700.0	700.0	700.0	1.5	1.5	90.00	0.0	22.6	22.6	19.6	2.92	7.721		
800.0	800.0	800.0	800.0	1.7	1.7	90.00	0.0	22.6	22.6	19.2	3.37	6.692		
900.0	900.0	900.0	900.0	1.9	1.9	90.00	0.0	22.6	22.6	18.7	3.82	5.904		
1,000.0	1,000.0	1,000.0	1,000.0	2.1	2.1	90.00	0.0	22.6	22.6	18.3	4.27	5.283 CC, ES		
1,100.0	1,100.0	1,099.2	1,099.2	2.4	2.3	89.32	0.3	24.3	24.3	19.6	4.71	5.155		
1,200.0	1,200.0	1,198.1	1,198.0	2.6	2.6	87.75	1.2	29.3	29.4	24.3	5.14	5.720		
1,300.0	1,300.0	1,296.6	1,296.1	2.8	2.8	86.09	2.6	37.7	38.0	32.4	5.58	6.800		
1,400.0	1,400.0	1,394.4	1,393.2	3.0	3.0	84.72	4.6	49.3	50.0	43.9	6.04	8.265		
1,500.0	1,500.0	1,491.3	1,488.9	3.3	3.3	83.70	7.1	64.0	65.3	58.8	6.53	10.006		
1,600.0	1,600.0	1,587.3	1,583.2	3.5	3.6	11.50	10.1	81.7	82.3	75.5	6.88	11.972		
1,700.0	1,699.8	1,682.9	1,676.4	3.7	3.9	11.40	13.6	102.4	99.3	92.0	7.30	13.607		
1,800.0	1,799.5	1,777.9	1,768.4	3.9	4.3	11.57	17.6	126.0	116.1	108.4	7.72	15.046		
1,900.0	1,898.7	1,872.4	1,858.9	4.1	4.7	11.91	22.1	152.5	132.8	124.7	8.14	16.315		
2,000.0	1,997.5	1,968.7	1,950.5	4.4	5.3	12.37	27.2	182.1	149.1	140.5	8.58	17.372		
2,100.0	2,096.0	2,067.5	2,044.3	4.7	5.8	12.90	32.4	212.9	164.4	155.4	9.06	18.141		
2,200.0	2,194.6	2,166.3	2,138.0	5.0	6.4	13.34	37.7	243.6	179.8	170.2	9.56	18.811		
2,300.0	2,293.1	2,265.1	2,231.7	5.3	7.0	13.71	42.9	274.4	195.2	185.1	10.06	19.397		
2,400.0	2,391.7	2,363.9	2,325.5	5.6	7.6	14.02	48.2	305.2	210.6	200.0	10.57	19.913		
2,500.0	2,490.2	2,462.7	2,419.2	5.9	8.2	14.30	53.4	335.9	225.9	214.9	11.09	20.368		
2,600.0	2,588.8	2,561.6	2,513.0	6.3	8.8	14.53	58.6	366.7	241.3	229.7	11.62	20.771		
2,700.0	2,687.3	2,660.4	2,606.7	6.6	9.4	14.74	63.9	397.4	256.7	244.6	12.15	21.130		
2,800.0	2,785.9	2,759.2	2,700.5	7.0	10.1	14.93	69.1	428.2	272.1	259.5	12.69	21.450		
2,900.0	2,884.4	2,858.0	2,794.2	7.3	10.7	15.09	74.4	459.0	287.6	274.3	13.23	21.737		
3,000.0	2,983.0	2,956.8	2,888.0	7.7	11.3	15.24	79.6	489.7	303.0	289.2	13.77	21.996		
3,100.0	3,081.5	3,055.6	2,981.7	8.0	12.0	15.38	84.8	520.5	318.4	304.0	14.32	22.230		
3,200.0	3,180.1	3,154.4	3,075.5	8.4	12.6	15.50	90.1	551.2	333.8	318.9	14.87	22.441		
3,300.0	3,278.6	3,253.2	3,169.2	8.7	13.3	15.61	95.3	582.0	349.2	333.8	15.43	22.634		
3,400.0	3,377.2	3,352.0	3,263.0	9.1	13.9	15.71	100.6	612.8	364.6	348.6	15.98	22.810		
3,500.0	3,475.7	3,450.8	3,356.7	9.5	14.6	15.81	105.8	643.5	380.0	363.5	16.54	22.971		
3,600.0	3,574.3	3,549.6	3,450.4	9.9	15.2	15.89	111.0	674.3	395.4	378.3	17.10	23.118		
3,700.0	3,672.8	3,648.4	3,544.2	10.2	15.8	15.97	116.3	705.0	410.8	393.2	17.67	23.254		
3,800.0	3,771.4	3,747.2	3,637.9	10.6	16.5	16.05	121.5	735.8	426.3	408.0	18.23	23.379		
3,900.0	3,869.9	3,846.0	3,731.7	11.0	17.1	16.12	126.8	766.6	441.7	422.9	18.80	23.495		
4,000.0	3,968.5	3,944.8	3,825.4	11.3	17.8	16.18	132.0	797.3	457.1	437.7	19.37	23.602		
4,100.0	4,067.0	4,043.6	3,919.2	11.7	18.5	16.24	137.3	828.1	472.5	452.6	19.94	23.702		
4,200.0	4,165.6	4,142.4	4,012.9	12.1	19.1	16.30	142.5	858.8	487.9	467.4	20.51	23.795		
4,300.0	4,264.1	4,241.2	4,106.7	12.5	19.8	16.35	147.7	889.6	503.4	482.3	21.08	23.881		
4,400.0	4,362.7	4,340.0	4,200.4	12.9	20.4	16.40	153.0	920.4	518.8	497.1	21.65	23.962		
4,500.0	4,461.2	4,438.8	4,294.2	13.2	21.1	16.44	158.2	951.1	534.2	512.0	22.22	24.038		
4,600.0	4,559.8	4,537.6	4,387.9	13.6	21.7	16.49	163.5	981.9	549.6	526.8	22.80	24.109		
4,700.0	4,658.3	4,636.4	4,481.7	14.0	22.4	16.53	168.7	1,012.6	565.0	541.7	23.37	24.175		
4,800.0	4,756.9	4,735.2	4,575.4	14.4	23.0	16.57	173.9	1,043.4	580.5	556.5	23.95	24.238		
4,900.0	4,855.4	4,834.0	4,669.2	14.8	23.7	16.61	179.2	1,074.2	595.9	571.3	24.52	24.297		
5,000.0	4,954.0	4,932.8	4,762.9	15.2	24.4	16.64	184.4	1,104.9	611.3	586.2	25.10	24.353		

COMPASS 2003.21 Build 46



SRC Gilbert 42-14-11NHZ Pad Sec.14-T5N-R66W - SRC Gilbert 42-14-11NHZ - Wellbore #1 - Plan #2													Offset Site Error:	0.0 ft
Survey Program: 0-MWD													Offset Well Error:	0.0 ft
Reference		Offset		Semi Major Axis			Distance		Between		Minimum	Separation	Warning	
Measured Depth (ft)	Vertical Depth (ft)	Measured Depth (ft)	Vertical Depth (ft)	Reference (ft)	Offset (ft)	Highside Toolface (°)	Offset Wellbore Centre +N/-S (ft)	+E/-W (ft)	Between Centres (ft)	Between Ellipses (ft)	Separation (ft)	Factor		
5,100.0	5,052.5	5,031.6	4,856.6	15.5	25.0	16.68	189.7	1,135.7	626.7	601.0	25.68	24.405		
5,200.0	5,151.1	5,130.4	4,950.4	15.9	25.7	16.71	194.9	1,166.4	642.1	615.9	26.26	24.455		
5,300.0	5,249.6	5,229.2	5,044.1	16.3	26.3	16.74	200.2	1,197.2	657.6	630.7	26.84	24.502		
5,400.0	5,348.2	5,328.0	5,137.9	16.7	27.0	16.77	205.4	1,228.0	673.0	645.6	27.42	24.547		
5,500.0	5,446.7	5,426.8	5,231.6	17.1	27.6	16.80	210.6	1,258.7	688.4	660.4	28.00	24.589		
5,600.0	5,545.3	5,525.6	5,325.4	17.5	28.3	16.82	215.9	1,289.5	703.8	675.3	28.58	24.629		
5,700.0	5,643.8	5,624.4	5,419.1	17.8	29.0	16.85	221.1	1,320.2	719.2	690.1	29.16	24.668		
5,800.0	5,742.4	5,729.6	5,518.9	18.2	29.6	16.88	226.7	1,352.9	734.6	704.8	29.75	24.690		
5,900.0	5,840.9	5,862.9	5,646.7	18.6	30.3	16.96	233.1	1,390.4	746.9	716.5	30.40	24.568		
6,000.0	5,939.5	5,997.5	5,777.3	19.0	30.9	17.11	238.5	1,422.2	754.6	723.6	31.03	24.321		
6,100.0	6,038.0	6,132.7	5,909.9	19.4	31.3	17.32	242.9	1,448.1	757.6	726.0	31.63	23.950		
6,200.0	6,136.6	6,268.0	6,043.7	19.8	31.7	17.61	246.3	1,467.8	756.1	723.9	32.21	23.472		
6,300.0	6,235.5	6,403.0	6,178.0	20.0	32.0	17.87	248.6	1,481.3	752.3	719.6	32.67	23.027		
6,400.0	6,334.9	6,537.6	6,312.4	20.3	32.2	18.10	249.8	1,488.4	747.2	714.1	33.05	22.607		
6,500.0	6,434.6	6,659.8	6,434.6	20.5	32.3	18.27	250.0	1,489.8	741.0	707.7	33.34	22.222		
6,600.0	6,534.6	6,759.7	6,534.6	20.7	32.4	18.35	250.0	1,489.8	737.2	703.6	33.56	21.968		
6,691.6	6,626.1	6,851.2	6,625.9	20.8	32.5	18.16	252.7	1,489.8	736.1	702.4	33.75	21.812		
6,700.0	6,634.6	6,859.5	6,634.2	20.8	32.5	89.73	253.5	1,489.8	736.5	702.7	33.76	21.815		
6,800.0	6,734.6	6,956.6	6,729.9	20.9	32.6	88.48	269.5	1,489.8	736.7	702.8	33.97	21.686		
6,900.0	6,834.2	7,050.0	6,819.1	21.1	32.8	86.78	297.0	1,489.8	737.7	703.4	34.25	21.539		
7,000.0	6,931.9	7,140.9	6,901.8	21.4	33.0	85.16	334.7	1,489.8	739.2	704.5	34.70	21.306		
7,100.0	7,025.6	7,229.8	6,977.3	21.6	33.2	83.63	381.4	1,489.8	741.2	705.9	35.30	20.995		
7,200.0	7,113.7	7,316.8	7,045.1	22.0	33.4	82.23	435.8	1,489.8	743.5	707.4	36.08	20.605		
7,300.0	7,194.3	7,400.0	7,103.3	22.4	33.7	81.00	495.2	1,489.8	745.9	708.9	37.06	20.130		
7,400.0	7,265.9	7,486.5	7,156.1	22.9	34.0	79.87	563.6	1,489.8	748.3	710.0	38.31	19.531		
7,500.0	7,327.1	7,569.6	7,198.8	23.5	34.4	78.95	634.9	1,489.8	750.6	710.7	39.87	18.823		
7,600.0	7,376.7	7,650.0	7,231.9	24.2	34.8	78.22	708.1	1,489.8	752.5	710.7	41.77	18.016		
7,700.0	7,413.8	7,733.6	7,257.4	25.1	35.2	77.65	787.7	1,489.8	754.0	709.9	44.08	17.106		
7,800.0	7,437.6	7,814.9	7,273.2	26.1	35.8	77.30	867.4	1,489.8	755.0	708.2	46.72	16.160		
7,900.0	7,447.7	7,900.0	7,279.9	27.2	36.4	77.15	952.2	1,489.8	755.4	705.7	49.71	15.197		
7,932.9	7,448.5	7,924.6	7,280.0	27.6	36.5	77.12	976.8	1,489.8	755.5	705.0	50.53	14.952		
8,000.0	7,448.0	7,991.7	7,280.0	28.4	37.1	77.15	1,043.9	1,489.8	755.4	702.9	52.45	14.403		
8,100.0	7,448.0	8,091.7	7,280.0	29.7	37.9	77.15	1,143.9	1,489.8	755.4	700.1	55.26	13.669		
8,200.0	7,448.0	8,191.7	7,280.0	31.1	38.9	77.15	1,243.9	1,489.8	755.4	697.2	58.19	12.982		
8,300.0	7,448.0	8,291.7	7,280.0	32.5	39.9	77.15	1,343.9	1,489.8	755.4	694.2	61.20	12.343		
8,400.0	7,448.0	8,391.7	7,280.0	34.0	41.0	77.15	1,443.9	1,489.8	755.4	691.1	64.29	11.749		
8,500.0	7,448.0	8,491.7	7,280.0	35.5	42.2	77.15	1,543.9	1,489.8	755.4	687.9	67.45	11.199		
8,600.0	7,448.0	8,591.7	7,280.0	37.1	43.4	77.15	1,643.9	1,489.8	755.4	684.7	70.67	10.689		
8,700.0	7,448.0	8,691.7	7,280.0	38.7	44.7	77.15	1,743.9	1,489.8	755.4	681.5	73.94	10.216		
8,800.0	7,448.0	8,791.7	7,280.0	40.3	46.0	77.15	1,843.9	1,489.8	755.4	678.1	77.26	9.777		
8,900.0	7,448.0	8,891.7	7,280.0	41.9	47.4	77.15	1,943.9	1,489.8	755.4	674.8	80.61	9.371		
9,000.0	7,448.0	8,991.7	7,280.0	43.6	48.8	77.15	2,043.9	1,489.8	755.4	671.4	84.00	8.993		
9,100.0	7,448.0	9,091.7	7,280.0	45.3	50.3	77.15	2,143.9	1,489.8	755.4	668.0	87.42	8.641		
9,200.0	7,448.0	9,191.7	7,280.0	47.0	51.8	77.15	2,243.9	1,489.8	755.4	664.5	90.87	8.313		
9,300.0	7,448.0	9,291.7	7,280.0	48.7	53.3	77.15	2,343.9	1,489.8	755.4	661.1	94.34	8.008		
9,400.0	7,448.0	9,391.7	7,280.0	50.5	54.9	77.15	2,443.9	1,489.8	755.4	657.6	97.83	7.722		
9,500.0	7,448.0	9,491.7	7,280.0	52.2	56.5	77.15	2,543.9	1,489.8	755.4	654.1	101.34	7.454		
9,600.0	7,448.0	9,591.7	7,280.0	54.0	58.1	77.15	2,643.9	1,489.8	755.4	650.6	104.87	7.204		
9,700.0	7,448.0	9,691.7	7,280.0	55.8	59.7	77.15	2,743.9	1,489.8	755.4	647.0	108.41	6.968		
9,800.0	7,448.0	9,791.7	7,280.0	57.5	61.3	77.15	2,843.9	1,489.8	755.4	643.5	111.97	6.747		
9,900.0	7,448.0	9,891.7	7,280.0	59.3	63.0	77.15	2,943.9	1,489.8	755.4	639.9	115.54	6.538		



<b>Company:</b>	Synergy Resources	<b>Local Co-ordinate Reference:</b>	Well SRC Gilbert 42-14-11CHZ
<b>Project:</b>	SEC.14-T5N-R66W	<b>TVD Reference:</b>	WELL @ 4847.0ft (RKB-12')
<b>Reference Site:</b>	SRC Gilbert 42-14-11NHZ Pad Sec.14-T5N-R66W	<b>MD Reference:</b>	WELL @ 4847.0ft (RKB-12')
<b>Site Error:</b>	0.0ft	<b>North Reference:</b>	True
<b>Reference Well:</b>	SRC Gilbert 42-14-11CHZ	<b>Survey Calculation Method:</b>	Minimum Curvature
<b>Well Error:</b>	0.0ft	<b>Output errors are at</b>	2.00 sigma
<b>Reference Wellbore</b>	Wellbore #1	<b>Database:</b>	Landmark
<b>Reference Design:</b>	Plan #2 (7-24-14)	<b>Offset TVD Reference:</b>	Offset Datum

Offset Design		SRC Gilbert 42-14-11NHZ Pad Sec.14-T5N-R66W - SRC Gilbert 42-14-11NHZ - Wellbore #1 - Plan #2										Offset Site Error:		0.0 ft			
Survey Program: 0-MWD														Offset Well Error:		0.0 ft	
Reference		Offset		Semi Major Axis			Distance							Warning			
Measured Depth	Vertical Depth	Measured Depth	Vertical Depth	Reference	Offset	Highside Toolface	Offset Wellbore Centre		Between Centres	Between Ellipses	Minimum Separation	Separation Factor					
(ft)	(ft)	(ft)	(ft)	(ft)	(ft)	(°)	+N/-S (ft)	+E/-W (ft)	(ft)	(ft)	(ft)						
10,000.0	7,448.0	9,991.7	7,280.0	61.1	64.7	77.15	3,043.9	1,489.8	755.4	636.3	119.12	6.342					
10,100.0	7,448.0	10,091.7	7,280.0	62.9	66.4	77.15	3,143.9	1,489.8	755.4	632.7	122.72	6.156					
10,200.0	7,448.0	10,191.7	7,280.0	64.8	68.1	77.15	3,243.9	1,489.8	755.4	629.1	126.32	5.980					
10,300.0	7,448.0	10,291.7	7,280.0	66.6	69.8	77.15	3,343.9	1,489.8	755.4	625.5	129.93	5.814					
10,400.0	7,448.0	10,391.7	7,280.0	68.4	71.5	77.15	3,443.9	1,489.8	755.4	621.9	133.55	5.657					
10,500.0	7,448.0	10,491.7	7,280.0	70.2	73.3	77.15	3,543.9	1,489.8	755.4	618.3	137.18	5.507					
10,600.0	7,448.0	10,591.7	7,280.0	72.1	75.0	77.15	3,643.9	1,489.8	755.4	614.6	140.81	5.365					
10,700.0	7,448.0	10,691.7	7,280.0	73.9	76.8	77.15	3,743.9	1,489.8	755.4	611.0	144.45	5.230					
10,800.0	7,448.0	10,791.7	7,280.0	75.8	78.5	77.15	3,843.9	1,489.8	755.4	607.3	148.10	5.101					
10,900.0	7,448.0	10,891.7	7,280.0	77.6	80.3	77.15	3,943.9	1,489.8	755.4	603.7	151.75	4.978					
11,000.0	7,448.0	10,991.7	7,280.0	79.5	82.1	77.15	4,043.9	1,489.8	755.4	600.0	155.41	4.861					
11,100.0	7,448.0	11,091.7	7,280.0	81.3	83.9	77.15	4,143.9	1,489.8	755.4	596.4	159.07	4.749					
11,200.0	7,448.0	11,191.7	7,280.0	83.2	85.7	77.15	4,243.9	1,489.8	755.5	592.7	162.74	4.642					
11,300.0	7,448.0	11,291.7	7,280.0	85.0	87.5	77.15	4,343.9	1,489.8	755.5	589.0	166.41	4.540					
11,400.0	7,448.0	11,391.7	7,280.0	86.9	89.3	77.15	4,443.9	1,489.8	755.5	585.4	170.09	4.442					
11,500.0	7,448.0	11,491.7	7,280.0	88.8	91.1	77.15	4,543.9	1,489.8	755.5	581.7	173.77	4.348					
11,600.0	7,448.0	11,591.7	7,280.0	90.6	92.9	77.15	4,643.9	1,489.8	755.5	578.0	177.45	4.257					
11,700.0	7,448.0	11,691.7	7,280.0	92.5	94.7	77.15	4,743.9	1,489.8	755.5	574.3	181.13	4.171					
11,800.0	7,448.0	11,791.7	7,280.0	94.4	96.6	77.15	4,843.9	1,489.8	755.5	570.6	184.82	4.088					
11,900.0	7,448.0	11,891.7	7,280.0	96.2	98.4	77.15	4,943.9	1,489.8	755.5	567.0	188.51	4.007					
12,000.0	7,448.0	11,991.7	7,280.0	98.1	100.2	77.15	5,043.9	1,489.8	755.5	563.3	192.21	3.930					
12,100.0	7,448.0	12,091.7	7,280.0	100.0	102.0	77.15	5,143.9	1,489.8	755.5	559.6	195.90	3.856					
12,132.2	7,448.0	12,124.0	7,280.0	100.6	102.6	77.15	5,176.2	1,489.8	755.5	558.4	197.09	3.833 SF					

<b>Company:</b>	Synergy Resources	<b>Local Co-ordinate Reference:</b>	Well SRC Gilbert 42-14-11CHZ
<b>Project:</b>	SEC.14-T5N-R66W	<b>TVD Reference:</b>	WELL @ 4847.0ft (RKB-12')
<b>Reference Site:</b>	SRC Gilbert 42-14-11NHZ Pad Sec.14-T5N-R66W	<b>MD Reference:</b>	WELL @ 4847.0ft (RKB-12')
<b>Site Error:</b>	0.0ft	<b>North Reference:</b>	True
<b>Reference Well:</b>	SRC Gilbert 42-14-11CHZ	<b>Survey Calculation Method:</b>	Minimum Curvature
<b>Well Error:</b>	0.0ft	<b>Output errors are at</b>	2.00 sigma
<b>Reference Wellbore</b>	Wellbore #1	<b>Database:</b>	Landmark
<b>Reference Design:</b>	Plan #2 (7-24-14)	<b>Offset TVD Reference:</b>	Offset Datum

Offset Design SRC Gilbert 42-14-11NHZ Pad Sec.14-T5N-R66W - SRC Gilbert A-14-11CHZM - Wellbore #1 - Plan #2													Offset Site Error:	0.0 ft
Survey Program: 0-MWD													Offset Well Error:	0.0 ft
Measured Depth (ft)	Vertical Depth (ft)	Measured Depth (ft)	Vertical Depth (ft)	Reference	Offset	Semi Major Axis Highside Toolface (°)	Offset Wellbore Centre +N/-S (ft)	+E/-W (ft)	Between Centres (ft)	Between Ellipses (ft)	Minimum Separation (ft)	Separation Factor	Warning	
0.0	0.0	0.0	0.0	0.0	0.0	-89.09	0.4	-22.6	22.6					
100.0	100.0	100.0	100.0	0.1	0.1	-89.09	0.4	-22.6	22.6	22.3	0.22	100.387		
200.0	200.0	200.0	200.0	0.3	0.3	-89.09	0.4	-22.6	22.6	21.9	0.67	33.462		
300.0	300.0	300.0	300.0	0.6	0.6	-89.09	0.4	-22.6	22.6	21.4	1.12	20.077		
400.0	400.0	400.0	400.0	0.8	0.8	-89.09	0.4	-22.6	22.6	21.0	1.57	14.341		
500.0	500.0	500.0	500.0	1.0	1.0	-89.09	0.4	-22.6	22.6	20.5	2.02	11.154		
600.0	600.0	600.0	600.0	1.2	1.2	-89.09	0.4	-22.6	22.6	20.1	2.47	9.126		
700.0	700.0	700.0	700.0	1.5	1.5	-89.09	0.4	-22.6	22.6	19.6	2.92	7.722		
800.0	800.0	800.0	800.0	1.7	1.7	-89.09	0.4	-22.6	22.6	19.2	3.37	6.692 CC, ES		
900.0	900.0	899.2	899.2	1.9	1.9	-88.25	0.7	-24.2	24.3	20.5	3.81	6.368 SF		
1,000.0	1,000.0	998.2	998.0	2.1	2.1	-86.33	1.9	-29.2	29.4	25.1	4.24	6.919		
1,100.0	1,100.0	1,096.6	1,096.1	2.4	2.3	-84.29	3.8	-37.5	37.9	33.2	4.69	8.079		
1,200.0	1,200.0	1,194.4	1,193.2	2.6	2.6	-82.61	6.4	-49.0	49.9	44.7	5.16	9.667		
1,300.0	1,300.0	1,291.3	1,288.9	2.8	2.9	-81.36	9.7	-63.5	65.2	59.6	5.65	11.537		
1,400.0	1,400.0	1,387.1	1,383.0	3.0	3.2	-80.46	13.6	-81.0	83.9	77.7	6.18	13.575		
1,500.0	1,500.0	1,483.9	1,477.6	3.3	3.5	-79.81	18.2	-101.0	105.0	98.3	6.75	15.570		
1,600.0	1,600.0	1,581.3	1,572.8	3.5	3.9	-151.18	22.7	-121.2	127.8	120.9	6.91	18.490		
1,700.0	1,699.8	1,677.9	1,667.2	3.7	4.3	-151.54	27.3	-141.3	153.6	146.2	7.34	20.924		
1,800.0	1,799.5	1,773.7	1,760.7	3.9	4.7	-152.23	31.8	-161.2	182.3	174.5	7.76	23.487		
1,900.0	1,898.7	1,868.4	1,853.3	4.1	5.1	-153.08	36.3	-180.9	214.0	205.9	8.18	26.181		
2,000.0	1,997.5	1,962.1	1,944.8	4.4	5.5	-154.01	40.7	-200.3	248.8	240.2	8.59	28.968		
2,100.0	2,096.0	2,055.3	2,035.8	4.7	5.9	-155.07	45.1	-219.7	284.8	275.7	9.04	31.516		
2,200.0	2,194.6	2,148.4	2,126.9	5.0	6.3	-155.88	49.5	-239.1	320.8	311.3	9.49	33.802		
2,300.0	2,293.1	2,241.6	2,217.9	5.3	6.7	-156.53	53.9	-258.4	356.9	346.9	9.95	35.861		
2,400.0	2,391.7	2,334.8	2,309.0	5.6	7.2	-157.07	58.3	-277.8	393.0	382.6	10.42	37.721		
2,500.0	2,490.2	2,428.0	2,400.1	5.9	7.6	-157.51	62.7	-297.2	429.1	418.2	10.89	39.406		
2,600.0	2,588.8	2,521.2	2,491.1	6.3	8.0	-157.88	67.0	-316.5	465.3	453.9	11.37	40.938		
2,700.0	2,687.3	2,614.4	2,582.2	6.6	8.4	-158.20	71.4	-335.9	501.5	489.6	11.84	42.336		
2,800.0	2,785.9	2,707.6	2,673.2	7.0	8.8	-158.48	75.8	-355.2	537.6	525.3	12.33	43.615		
2,900.0	2,884.4	2,800.8	2,764.3	7.3	9.3	-158.72	80.2	-374.6	573.8	561.0	12.81	44.789		
3,000.0	2,983.0	2,894.0	2,855.3	7.7	9.7	-158.93	84.6	-394.0	610.0	596.7	13.30	45.869		
3,100.0	3,081.5	2,987.2	2,946.4	8.0	10.1	-159.12	89.0	-413.3	646.2	632.5	13.79	46.865		
3,200.0	3,180.1	3,080.4	3,037.4	8.4	10.6	-159.29	93.4	-432.7	682.5	668.2	14.28	47.788		
3,300.0	3,278.6	3,173.6	3,128.5	8.7	11.0	-159.44	97.8	-452.1	718.7	703.9	14.77	48.643		
3,400.0	3,377.2	3,266.8	3,219.6	9.1	11.4	-159.58	102.2	-471.4	754.9	739.6	15.27	49.438		
3,500.0	3,475.7	3,360.0	3,310.6	9.5	11.9	-159.71	106.6	-490.8	791.1	775.4	15.77	50.179		
3,600.0	3,574.3	3,453.2	3,401.7	9.9	12.3	-159.82	111.0	-510.1	827.4	811.1	16.26	50.871		
3,700.0	3,672.8	3,546.4	3,492.7	10.2	12.7	-159.93	115.4	-529.5	863.6	846.8	16.76	51.518		
3,800.0	3,771.4	3,639.6	3,583.8	10.6	13.2	-160.02	119.8	-548.9	899.8	882.6	17.26	52.124		
3,900.0	3,869.9	3,732.7	3,674.8	11.0	13.6	-160.11	124.1	-568.2	936.1	918.3	17.76	52.693		
4,000.0	3,968.5	3,825.9	3,765.9	11.3	14.0	-160.19	128.5	-587.6	972.3	954.0	18.27	53.228		

<b>Company:</b>	Synergy Resources	<b>Local Co-ordinate Reference:</b>	Well SRC Gilbert 42-14-11CHZ
<b>Project:</b>	SEC.14-T5N-R66W	<b>TVD Reference:</b>	WELL @ 4847.0ft (RKB-12')
<b>Reference Site:</b>	SRC Gilbert 42-14-11NHZ Pad Sec.14-T5N-R66W	<b>MD Reference:</b>	WELL @ 4847.0ft (RKB-12')
<b>Site Error:</b>	0.0ft	<b>North Reference:</b>	True
<b>Reference Well:</b>	SRC Gilbert 42-14-11CHZ	<b>Survey Calculation Method:</b>	Minimum Curvature
<b>Well Error:</b>	0.0ft	<b>Output errors are at</b>	2.00 sigma
<b>Reference Wellbore</b>	Wellbore #1	<b>Database:</b>	Landmark
<b>Reference Design:</b>	Plan #2 (7-24-14)	<b>Offset TVD Reference:</b>	Offset Datum

Offset Design SRC Gilbert 42-14-11NHZ Pad Sec.14-T5N-R66W - SRC Gilbert A-14-11NHZM - Wellbore #1 - Plan #2													Offset Site Error:	0.0 ft
Survey Program: 0-MWD													Offset Well Error:	0.0 ft
Measured Depth (ft)	Vertical Depth (ft)	Measured Depth (ft)	Vertical Depth (ft)	Reference	Offset	Semi Major Axis Highside Toolface (°)	Offset Wellbore Centre +N/-S (ft)	Offset Wellbore Centre +E/-W (ft)	Between Centres (ft)	Between Ellipses (ft)	Minimum Separation (ft)	Separation Factor	Warning	
0.0	0.0	4.0	4.0	0.0	0.0	-89.54	0.4	-44.8	44.8	44.8	0.00	9,567.108		
100.0	100.0	104.0	104.0	0.1	0.1	-89.54	0.4	-44.8	44.8	44.6	0.23	191.841		
200.0	200.0	204.0	204.0	0.3	0.3	-89.54	0.4	-44.8	44.8	44.2	0.68	65.630		
300.0	300.0	304.0	304.0	0.6	0.6	-89.54	0.4	-44.8	44.8	43.7	1.13	39.586		
400.0	400.0	404.0	404.0	0.8	0.8	-89.54	0.4	-44.8	44.8	43.3	1.58	28.340		
500.0	500.0	504.0	504.0	1.0	1.0	-89.54	0.4	-44.8	44.8	42.8	2.03	22.070		
565.3	565.3	569.3	569.3	1.2	1.2	-89.54	0.4	-44.8	44.8	42.5	2.33	19.285 CC		
600.0	600.0	603.9	603.9	1.2	1.2	-89.54	0.4	-44.8	44.8	42.4	2.48	18.077 ES		
700.0	700.0	702.4	702.4	1.5	1.5	-89.18	0.7	-46.6	46.7	43.8	2.92	16.002		
800.0	800.0	800.0	799.8	1.7	1.7	-88.29	1.5	-51.7	51.9	48.6	3.35	15.495 SF		
900.0	900.0	898.3	897.8	1.9	1.9	-87.15	3.0	-60.1	60.5	56.7	3.80	15.921		
1,000.0	1,000.0	995.3	994.1	2.1	2.1	-86.02	5.0	-71.7	72.5	68.3	4.28	16.966		
1,100.0	1,100.0	1,091.5	1,089.0	2.4	2.4	-85.02	7.5	-86.3	87.9	83.1	4.78	18.391		
1,200.0	1,200.0	1,186.5	1,182.4	2.6	2.8	-84.20	10.5	-103.8	106.5	101.2	5.32	20.031		
1,300.0	1,300.0	1,280.2	1,273.8	2.8	3.1	-83.54	14.0	-124.0	128.4	122.5	5.90	21.768		
1,400.0	1,400.0	1,372.5	1,363.2	3.0	3.5	-83.02	18.0	-146.9	153.5	147.0	6.52	23.522		
1,500.0	1,500.0	1,465.7	1,452.7	3.3	4.0	-82.60	22.4	-172.5	181.3	174.1	7.20	25.188		
1,600.0	1,600.0	1,561.2	1,544.2	3.5	4.5	-153.86	27.0	-199.1	211.1	204.1	6.97	30.298		
1,700.0	1,699.8	1,655.6	1,634.8	3.7	5.0	-153.85	31.6	-225.5	243.9	236.5	7.41	32.931		
1,800.0	1,799.5	1,749.0	1,724.4	3.9	5.6	-154.08	36.1	-251.5	279.6	271.8	7.83	35.700		
1,900.0	1,898.7	1,841.1	1,812.7	4.1	6.1	-154.44	40.5	-277.2	318.3	310.1	8.25	38.577		
2,000.0	1,997.5	1,932.0	1,899.8	4.4	6.6	-154.92	44.9	-302.6	359.9	351.3	8.67	41.529		
2,100.0	2,096.0	2,022.2	1,986.4	4.7	7.1	-155.66	49.2	-327.8	402.7	393.6	9.12	44.151		
2,200.0	2,194.6	2,112.5	2,073.0	5.0	7.7	-156.26	53.6	-353.0	445.5	435.9	9.58	46.489		
2,300.0	2,293.1	2,202.8	2,159.6	5.3	8.2	-156.76	58.0	-378.2	488.4	478.3	10.05	48.582		
2,400.0	2,391.7	2,293.1	2,246.2	5.6	8.7	-157.17	62.3	-403.4	531.2	520.7	10.53	50.462		
2,500.0	2,490.2	2,383.3	2,332.7	5.9	9.3	-157.53	66.7	-428.6	574.1	563.1	11.01	52.158		
2,600.0	2,588.8	2,473.6	2,419.3	6.3	9.8	-157.83	71.0	-453.7	617.1	605.6	11.49	53.693		
2,700.0	2,687.3	2,563.9	2,505.9	6.6	10.3	-158.09	75.4	-478.9	660.0	648.0	11.98	55.087		
2,800.0	2,785.9	2,654.2	2,592.5	7.0	10.9	-158.33	79.7	-504.1	702.9	690.5	12.47	56.359		
2,900.0	2,884.4	2,744.5	2,679.1	7.3	11.4	-158.53	84.1	-529.3	745.9	732.9	12.97	57.521		
3,000.0	2,983.0	2,834.7	2,765.7	7.7	12.0	-158.71	88.4	-554.5	788.8	775.4	13.46	58.588		
3,100.0	3,081.5	2,925.0	2,852.2	8.0	12.5	-158.88	92.8	-579.7	831.8	817.8	13.96	59.569		
3,200.0	3,180.1	3,015.3	2,938.8	8.4	13.0	-159.03	97.1	-604.9	874.7	860.3	14.46	60.474		
3,300.0	3,278.6	3,105.6	3,025.4	8.7	13.6	-159.16	101.5	-630.1	917.7	902.7	14.97	61.311		
3,400.0	3,377.2	3,195.9	3,112.0	9.1	14.1	-159.28	105.8	-655.3	960.7	945.2	15.47	62.087		

Reference Depths are relative to WELL @ 4847.0ft (RKB-12')	Coordinates are relative to: SRC Gilbert 42-14-11CHZ
Offset Depths are relative to Offset Datum	Coordinate System is US State Plane 1983, Colorado Northern Zone
Central Meridian is -105.500000 °	Grid Convergence at Surface is: 0.49°



<b>Company:</b>	Synergy Resources	<b>Local Co-ordinate Reference:</b>	Well SRC Gilbert 42-14-11CHZ
<b>Project:</b>	SEC.14-T5N-R66W	<b>TVD Reference:</b>	WELL @ 4847.0ft (RKB-12')
<b>Reference Site:</b>	SRC Gilbert 42-14-11NHZ Pad Sec.14-T5N-R66W	<b>MD Reference:</b>	WELL @ 4847.0ft (RKB-12')
<b>Site Error:</b>	0.0ft	<b>North Reference:</b>	True
<b>Reference Well:</b>	SRC Gilbert 42-14-11CHZ	<b>Survey Calculation Method:</b>	Minimum Curvature
<b>Well Error:</b>	0.0ft	<b>Output errors are at</b>	2.00 sigma
<b>Reference Wellbore</b>	Wellbore #1	<b>Database:</b>	Landmark
<b>Reference Design:</b>	Plan #2 (7-24-14)	<b>Offset TVD Reference:</b>	Offset Datum

Reference Depths are relative to WELL @ 4847.0ft (RKB-12')  
Offset Depths are relative to Offset Datum  
Central Meridian is -105.500000 °

Coordinates are relative to: SRC Gilbert 42-14-11CHZ  
Coordinate System is US State Plane 1983, Colorado Northern Zone  
Grid Convergence at Surface is: 0.49°

