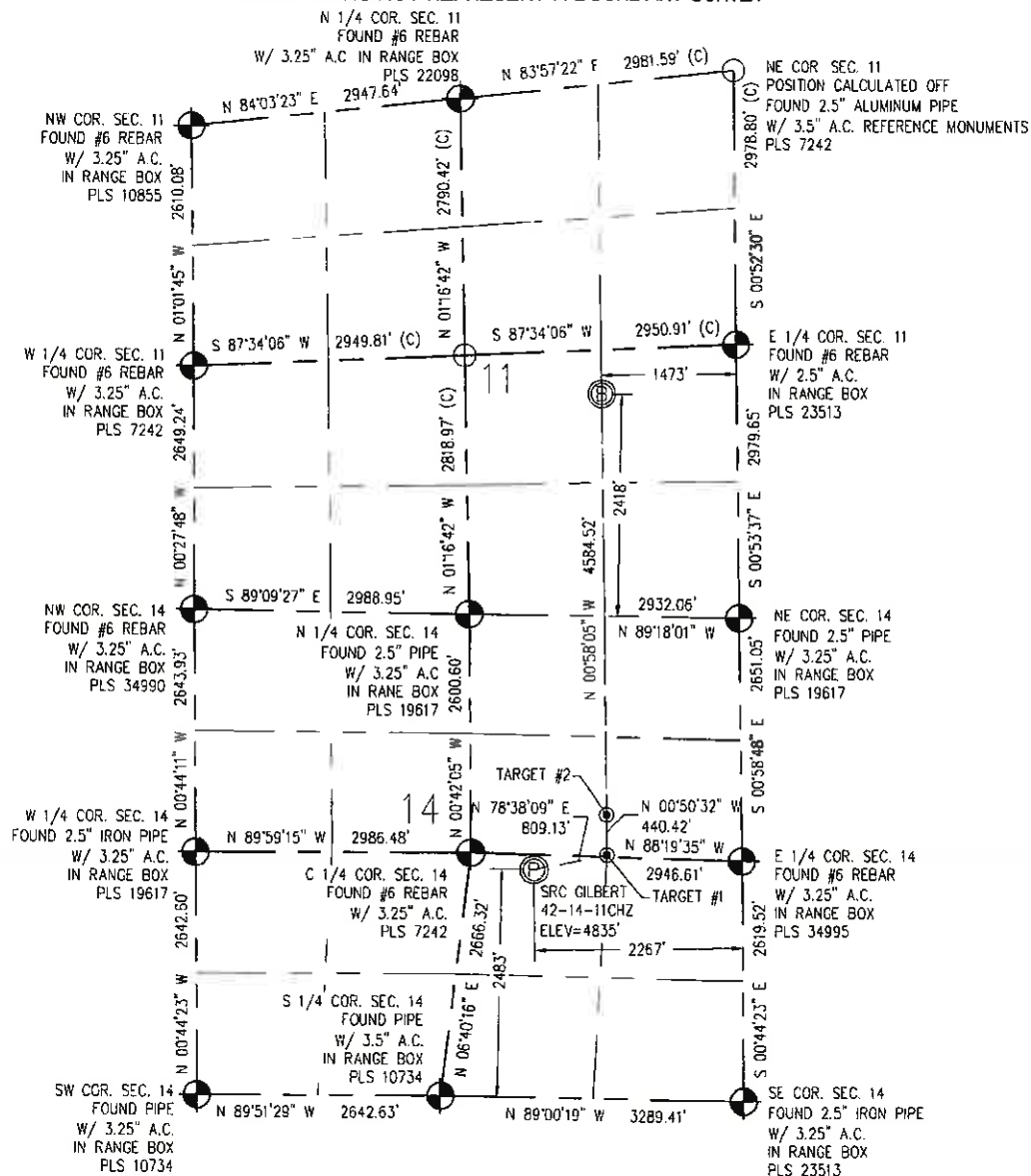


WELL LOCATION CERTIFICATE

THIS MAP DOES NOT REPRESENT A BOUNDARY SURVEY



IN ACCORDANCE WITH A REQUEST FROM CRAIG RASMUSON - SYNERGY RESOURCES, BASELINE ENGINEERING CORP. HAS DETERMINED THE LOCATION OF THE SRC GILBERT 42-14-11CHZ TO BE 2,483' FSL AND 2,267' FEL, AS MEASURED AT NINETY (90) DEGREES FROM THE SECTION LINE OF SECTION 14, TOWNSHIP 5 NORTH, RANGE 66 WEST AND THE BOTTOM HOLE LOCATION TO BE 2,418' FSL AND 1,473' FEL OF SECTION 11, TOWNSHIP 5 NORTH, RANGE 66 WEST, 6TH PRINCIPAL MERIDIAN, WELD COUNTY, COLORADO.

I HEREBY CERTIFY THAT THIS WELL LOCATION CERTIFICATE WAS PREPARED BY ME, OR UNDER MY DIRECT SUPERVISION, THAT THE FIELD WORK WAS COMPLETED ON 7/16/2013, THAT IT IS NOT A LAND SURVEY PLAT OR AN IMPROVEMENT SURVEY PLAT, AND THAT IT IS NOT TO BE RELIED UPON FOR ESTABLISHMENT OF FENCE, BUILDING, OR OTHER FUTURE IMPROVEMENT LINES.

NOTES:

- 1) LAT/LONG SHOWN ARE BASED ON A GPS OBSERVATION (NAD83).
- 2) BEARINGS SHOWN ARE GRID BEARINGS OF THE COLORADO STATE PLANE COORDINATE SYSTEM, NORTH ZONE, NORTH AMERICAN DATUM 1983/2007.
- 3) GROUND ELEVATIONS ARE BASED ON A GPS OBSERVATION (NAVD 88 DATUM).
- 4) ALL DISTANCES SHOWN ARE FIELD MEASURED UNLESS OTHERWISE NOTED
- 5) THE NEAREST EXISTING WELL IS: GILBERT 464' SOUTH
- 6) IMPROVEMENTS: SEE LOCATION DRAWING EXHIBIT FOR ALL VISIBLE IMPROVEMENTS WITHIN 600' OF WELL HEAD.
- 7) SURFACE USE: NATURAL GROUND

SURFACE HOLE:

LATITUDE: 40.399024° N
LONGITUDE: 104.743099° W
PDOP: 1.0

1/4, 1/4, NW1/4SE1/4
NEAREST PROPERTY LINE: 163' N

BOTTOM HOLE:

LATITUDE: 40.413232° N
LONGITUDE: 104.740394° W

TARGET #1:

LATITUDE: 40.399443° N
LONGITUDE: 104.740247° W

TARGET #2:

LATITUDE: 40.400652° N
LONGITUDE: 104.740257° W

LEGEND

- FOUND/SET SURVEY MONUMENT PER MONUMENT RECORD EXCEPTIONS NOTED
- CALCULATED SURVEY MONUMENT POSITION
- (C) CALCULATED DIMENSION

NOTICE: According to Colorado law you MUST commence any legal action based upon any defect in this WLC within three years after you first discover such defect. In no event may any action based upon any defect in this WLC be commenced more than ten years from this said date of the certification shown herein.



AARON A. DEMO
Professional Land Surveyor Registration No. 38285
State of Colorado
FOR AND ON BEHALF OF BASELINE ENGINEERING CORP.

Completed
7/8/2014

JOB #: SYN5N66W14-01