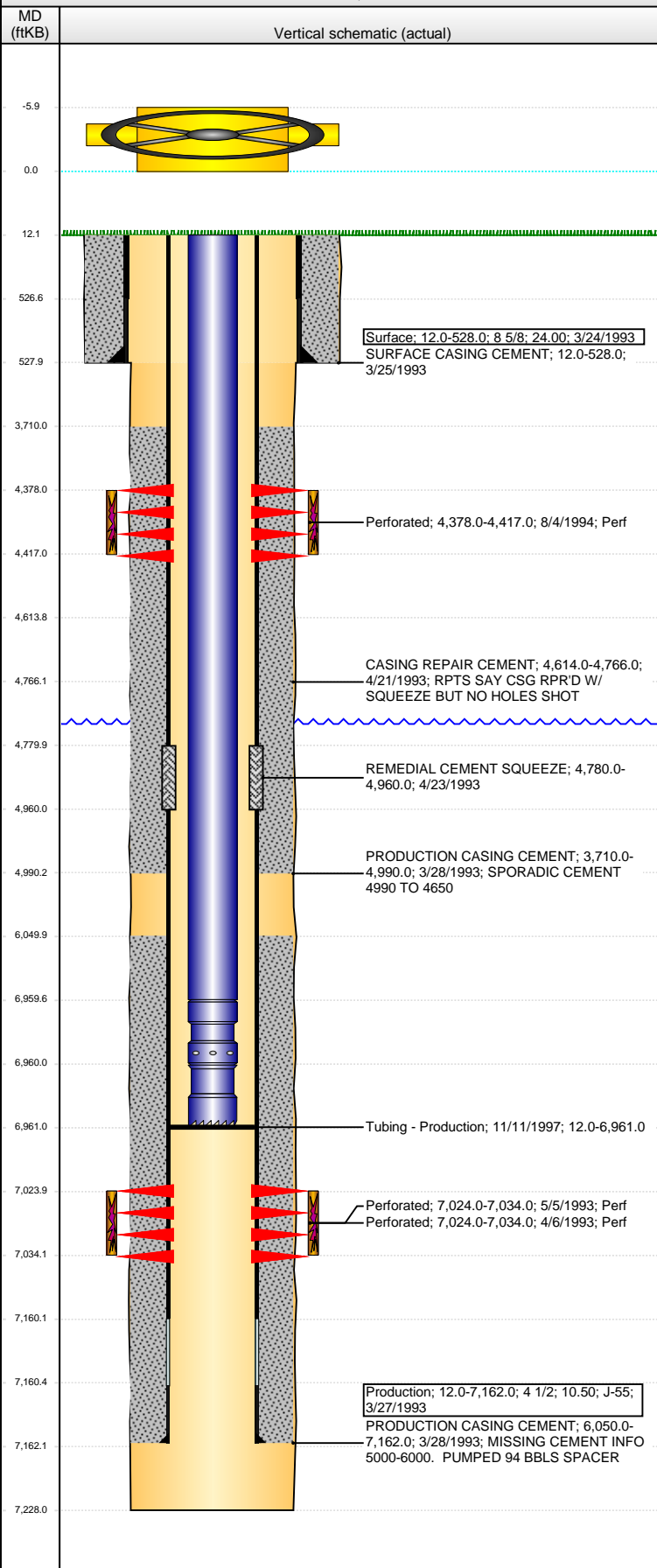


Well Name: TURK WHITE D19-02

VERTICAL - ORIGINAL HOLE, 7/30/2014 8:03:43 AM



Well Header

API	Business Unit	District	Well Config
05-123-16293	DJ BASIN	15	VERTICAL
Original KB Elevation (ft)	KB - GL / MSL (ftKB)	Spud Date	P & A Date
4,775.00	12.00	3/23/1993	

Comment
FOUND CSG LEAK @ 4964' - POSSIBLE SPLIT FROM 4964-4980 - RPR'D W/ CEMENT

Directions To Well

Congressional Location

Quarter 1	Quarter 2	Quarter 3	Quarter 4	Section	Township	Twnshp N...	Range	Rng E/W Dir
		NW	NE	19	3	N	64	W

Bottom Hole Location

North-South Distance (ft)	From N or S Line	East-West Distance (ft)	From E or W Line

Plug Back Total Depths

Date	Depth (ftKB)	Method	Com
3/27/1993	7,118.0	CASING TALLY	FLOAT SHOE W/ BAFFLE
4/5/1993	7,090.0	CASED HOLE LOG	DEPTH LOGGER ON CBL
3/26/1994	7,021.0	TAG	TAG
11/11/1997	6,961.0	TAG	TAG TO LAND TUBING

Wellbore Sections

Section Des	Size (in)	Act Top, MD (ftKB)	Act Btm, MD (ftKB)
SURFACE	12 1/4	12.0	528.0
PRODUCTION	7 7/8	528.0	7,228.0

Zone Statuses

Zone Name	Status Date	Status	Job
CODELL	5/27/1993	PR	DRILLING/COMPLETION - ORIGINAL, 3/23/1993 00:00
CODELL	7/29/1994	PR	RECOMPLETION, 8/4/1994 00:00
CODELL	11/12/1997	PR	COMMINGLE ZONES, 11/7/1997 00:00
SUSSEX	8/25/1994	PR	RECOMPLETION, 8/4/1994 00:00
SUSSEX	11/12/1997	PR	COMMINGLE ZONES, 11/7/1997 00:00

Casing Strings

Surface, 528.0ftKB

Casing Description	Run Date	OD (in)	Wt/Len (l...)	Grade	Top, MD (ft...)	MD (ftKB)
Surface	3/24/1993	8 5/8	24.00		12.0	528.0

Production, 7,162.0ftKB

Casing Description	Run Date	OD (in)	Wt/Len (l...)	Grade	Top, MD (ft...)	MD (ftKB)
Production	3/27/1993	4 1/2	10.50	J-55	12.0	7,162.0

Cement

Description	Top Depth (ftKB)	Bottom Depth (ftKB)
SURFACE CASING CEMENT	12.0	528.0
PRODUCTION CASING CEMENT	3,710.0	4,990.0
PRODUCTION CASING CEMENT	6,050.0	7,162.0
CASING REPAIR CEMENT	4,614.0	4,766.0
REMEDIAL CEMENT SQUEEZE	4,780.0	4,960.0

Tubing Components

Item Des	OD (in)	Wt (lb/ft)	Grade	Jts	Len (ft)	Btm (ftKB)	Btm (TVD) (ftKB)
Tubing	2 3/8	4.70			6,947.50	6,959.5	
Pump Seating Nipple	2 3/8				0.50	6,960.0	
Notched collar	2 3/8				1.00	6,961.0	

Perforation Data

Zone	Bnch/St g	Entered Shot Total	Top (ftKB)	Btm (ftKB)	Date
SUSSEX, ORIGINAL HOLE		14	4,378.00	4,417.00	8/4/1994
CODELL, ORIGINAL HOLE		40	7,024.00	7,034.00	4/6/1993
CODELL, ORIGINAL HOLE		40	7,024.00	7,034.00	5/5/1993

Well Name: TURK WHITE D19-02

VERTICAL - ORIGINAL HOLE, 7/30/2014 8:03:45 AM

Stimulations & Treatments

Date 4/6/1993	Zone CODELL, ORIGINAL HOLE	Primary Job Type DRILLING/COMPLETION - ORIGINAL
------------------	-------------------------------	--

Technical Result Failure	Tech Result Details Poor Design	Tech Result Note
-----------------------------	------------------------------------	------------------

Comment
STOPPED DUE TO HIC

Date 5/12/1993	Zone CODELL, ORIGINAL HOLE	Primary Job Type DRILLING/COMPLETION - ORIGINAL
-------------------	-------------------------------	--

Technical Result	Tech Result Details	Tech Result Note
------------------	---------------------	------------------

Comment

Date 8/10/1994	Zone SUSSEX, ORIGINAL HOLE	Primary Job Type RECOMPLETION
-------------------	-------------------------------	----------------------------------

Technical Result	Tech Result Details	Tech Result Note
------------------	---------------------	------------------

Comment

Other In Hole

Run Date	Des	OD (in)	Top (ftKB)	Btm (ftKB)

Logs

Date	Type	Top, MD (ftKB)	Btm, MD (ftKB)
3/27/1993	COMPENSATED DENSITY	3,878.0	7,145.0
3/27/1993	INDUCTION	4,050.0	4,450.0
4/5/1993	CEMENT BOND	3,580.0	7,085.0
4/8/1993	DIFFERENTIAL TEMPERATURE	2,200.0	7,090.0
4/18/2011	GYRO	10.0	6,900.0

