



RESERVOIR PERFORMANCE MONITOR

Baker Atlas

File No: CH086758 Company WPX ENERGY

Well PA 314-6

Field PARACHUTE

County GARFIELD State CO

0504522330000

Location

6 7 S 95W SHL: 790' FSL & 743' FWL

PA 14-S PAD

BHL: 879' FSL & 784' FWL

NABORS 574

SEC 6 TWP 7S RGE 95W

Other Services

BOND LOG

Permanent Datum GL Elevation 5153

Log Measured From KB 26 Above P. D.

Drill Measured From KB

Elevations

KB 5179

DF

GL 5153

Date	04/JUN/14	
Run	ONE	
Service Order	US086758	
Depth Driller	6474	
Depth Logger	6418	
Bottom Logged Interval	6408	
Top Logged Interval	3131	
Time Started	11:30	
Time Finished	16:30	
Operator Rig Time	5 HOURS	
Type of Fluid in Hole	WATER	
Fluid Density	NA	
Salinity	NA	
Fluid Level	62	
Logged Cement Top	NA	
Wellhead Pressure	0	
Maximum Hole Deviation	NA	
Nominal Logging Speed	10	
Maximum Recorded Temperature	212	
Reference Log	BAKER HUGHES BOND LOG	
Reference Log Date	04/JUN/14	
Equipment No.	Location	
4271	GRAND JUNCTION	
Recorded By	NEMELL	
Witnessed By	CHRIS TILLER	

- FOLD HERE

In making interpretations of logs, our employees will give the customer the benefit of their best judgement. But since all interpretations are opinions based on inferences from electrical or other measurements, we cannot, and we do not guarantee the accuracy or correctness of any interpretation. We shall not be liable or responsible for any loss, cost, damages, or expenses whatsoever incurred or sustained by the customer resulting from any interpretation made by any of our employees.

Borehole Record		
Bit Size	From	To
13.5	0	1000
8.75	1000	6503

Casing Record				
Size	Weight	Grade	From	To
9.625			0	1000
4.5	11.6	1-80	0	6503

Remarks

All data on this log is shifted and depth matched using the Gamma Ray curve to the Baker Hughes bond log dated 04/MAY/2014 at the client's request.

The depth matching process creates potential for collar lengths to vary from those recorded on other cased hole wireline units without a Gamma Ray reference.

The amount of linear shift is 6 feet.

Logged in PNC-3D mode.

BHT = 212 °F

SJ = 2779'-2802'

Equipment Data					
Run	Trip	Tool	Series Number	Serial Number	Position
1	1	PCM	8250EA	10397894	FREE
1	1	TEL/CCL	8248ED	10296408	FREE
1	1	GR	2812LA	10274385	FREE
1	1	RPM	8281EA	10190984	FREE
1	1	RPM	8283PA	10169251	FREE
1	1	RPM	8281FA	10191667	FREE
1	1	TEMP	8255XA	11774568	FREE

MAIN SECTION
PNC 3-D MODE

SPL PROCESSING

MEASUREMENT TYPE	PARAMETER	VALUE	UNITS	TOP	BOTTOM
PNC Porosity	Borehole	Cased		3109.750	6413.843
PNC Porosity	Borehole Size	8.750	inch	3109.750	6413.843
PNC Porosity	Casing Size	4.500	inch	3109.750	6413.843
PNC Porosity	Gas Filled	Non Gas Filled		3109.750	6413.843
PNC Porosity	Matrix	Sandstone		3109.750	6413.843
TPS Pressure	Temperature Corr. Source	Fixed (72.00)	degF	3109.750	6413.843

DEPTH OFFSETS
(for Acquired Curves)

SERIES	DEPTH OFFSET	ACQUIRED CURVES
8248ED	-26.519	FLTM
8248ED	-24.519	CCL CHV

2812LA	-21.969	GR
8281XA	-12.702	HVC3Q0 SEQ3 AMA3 AML3 BKX CXS CPT3Q0 CPT3Q2 CPT3Q3 CPT3Q4 ET3 IXS MCS3 MCS3Q0 QCAL3 RGN3 RICX SDA3 SDL3 SGA3 SGL3 STA3 XS ASPEC3 AMB3 AMF3 CHF3 IXSC IXSN RATO23 RICXC RIN13C RIN23 RIN23C SD3D SG3D SGB3 SGF3 WDT3 CXSR IXSR XSR RICXR
8281XA	-12.291	HVC2Q0 SEQ2 AMA2 AMB2 AMF2 AML2 BKL CHF2 CLS CPT2Q0 CPT2Q2 CPT2Q3 CPT2Q4 ET2 ILS LS MCS2 MCS2Q0 QCAL2 RGN2 RICL RONE23 RTWO23 SDA2 SDL2 SGA2 SGB2 SGF2 SGK2 SGL2 STA2 ASPEC2 ILSC ILSN WDT2 RICLC CLSR ILSR LSR RICLR
8281XA	-12.041	CPRS HVC1Q0 MV SEQ SEQ1 AMA1 AMB1 AME1 AMF1 AML1 BKS CHF1 CSS CORB CORF CPT1Q0 CPT1Q2 CPT1Q2A CPT1Q2B CPT1Q2C CPT1Q3 CPT1Q4 CPT1Q5 ET1 G1 G2 GE1S GE2S ISS MCS1 MCS1Q0 QA1 QCAL1 QM1 RATO RATO13 RBOR RGN1 RICS RIN RONE RPOR RTWO RIN13 RONE13 RTWO13 SALB SC1 SDA1 SDL1 SGA1 SGB1 SGB1 SGE1 SGF1 SGFC SGK1 SGL1 SS SS2 STA1 PD1S PD2S PD3S MD1S MD2S MD3S DG1S DG2S DG3S PD1M PD2M PD3M MD1M MD2M MD3M DG1M DG2M DG3M MVS MA MVM FILV IAM TA PVM PVS IAS SSTAT QPD1 QPD2 QPD3 QMD1 QMD2 QMD3 QDG1 QDG2 QDG3 QMA QTA QFILV QMV QPV QIA DERR DCNT QPK1 QSA1 PKS1 ASPEC1 H0C FE2XC ISSC RINC ISSN RDEN WDT1 RICSC CSSR G1R G2R ISSR SSR SS2R RATOR RATO13R RBORR RICSR RINR RIN13R RONE RPORR RTWOR
8255XA	-0.792	PTFS PTMS
8255XA	-0.775	SPF1 SPFQ TSCP TSDP
8255XA	0.000	DTEM TEMP TNF
SYSTEM	0.000	TEN TTEN

Created by : RPM9, v5.3.1.0

Plotted by : PlotMgr, v5.4.504

Company : WPX ENERGY

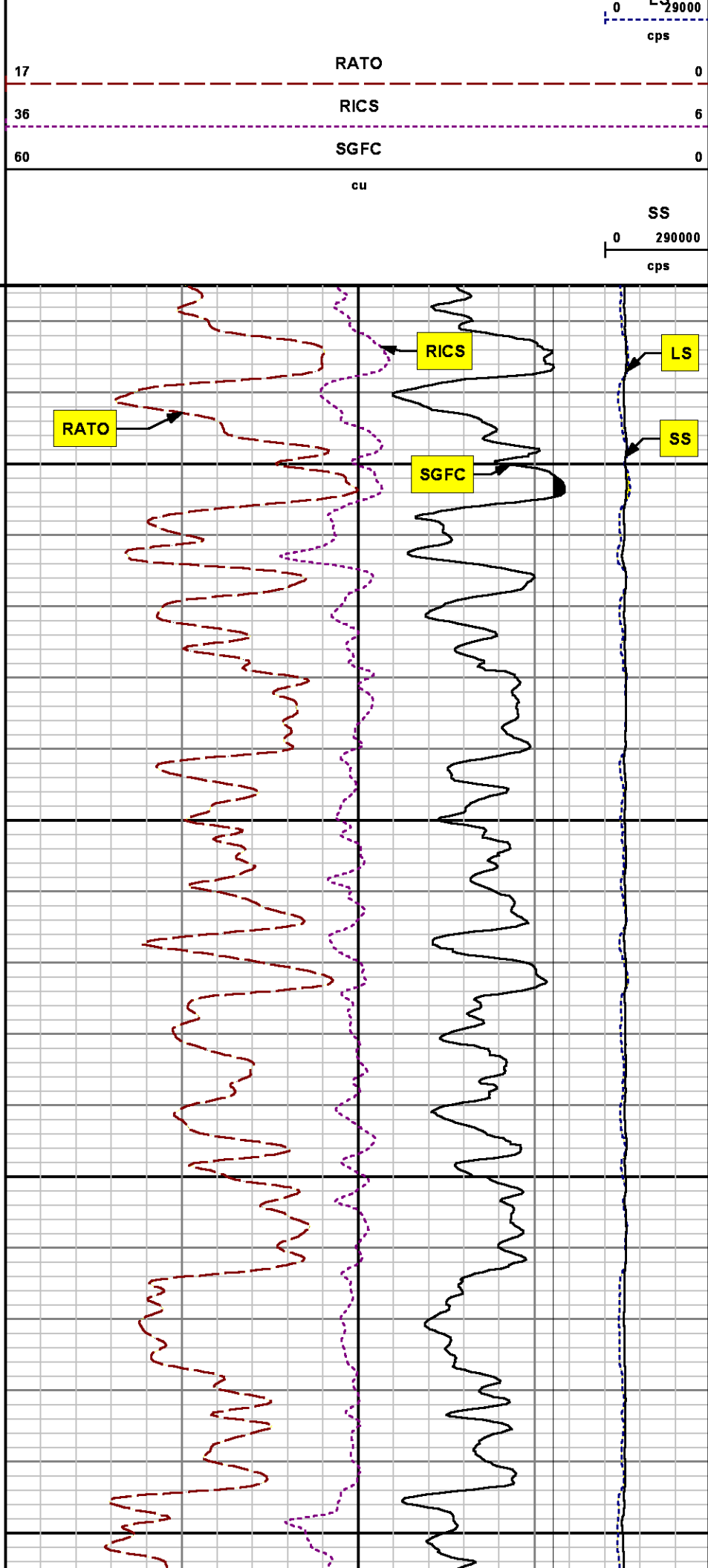
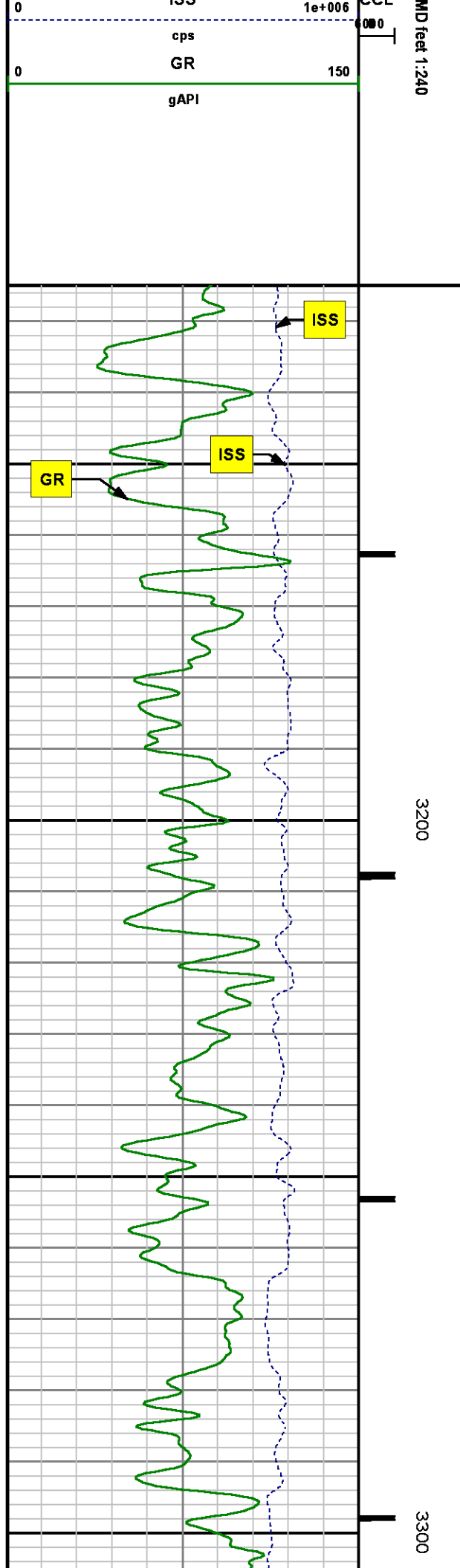
Well : PA 314-6

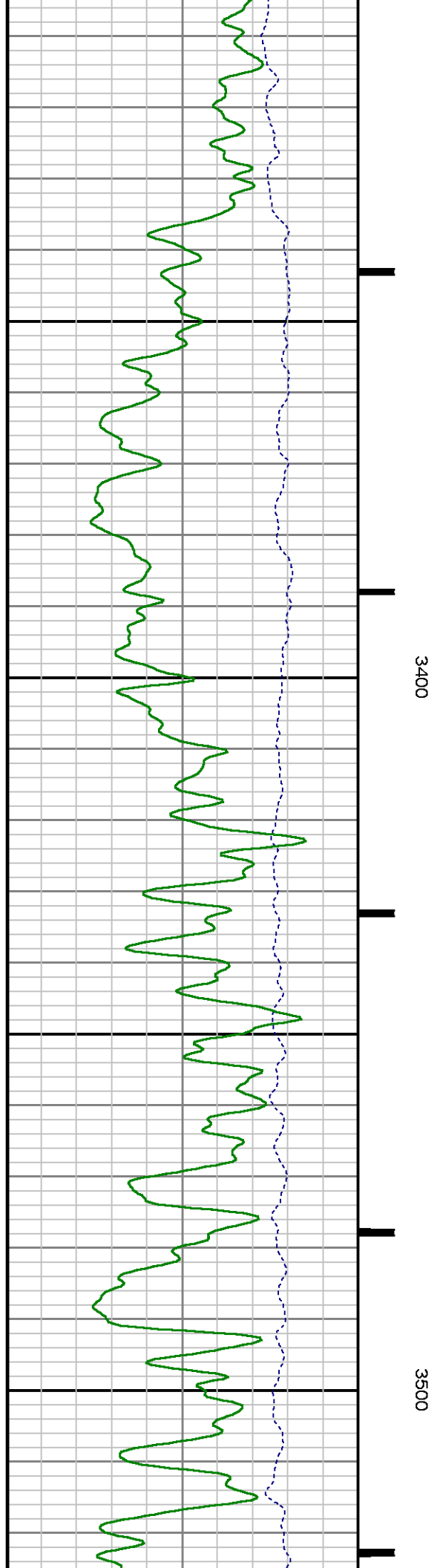
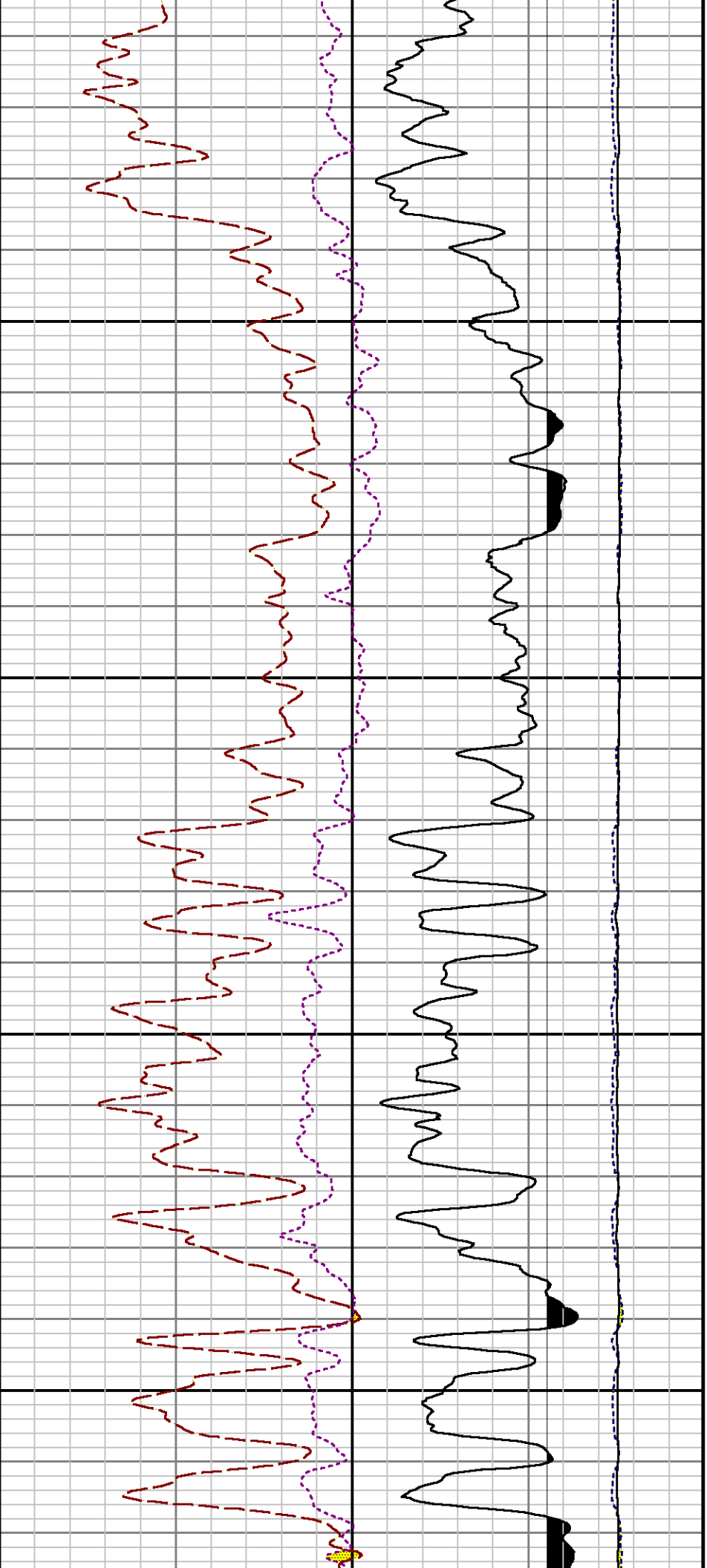
File Name : d:\well\data\wpx\pa 314-6\314rpm\main.xtf

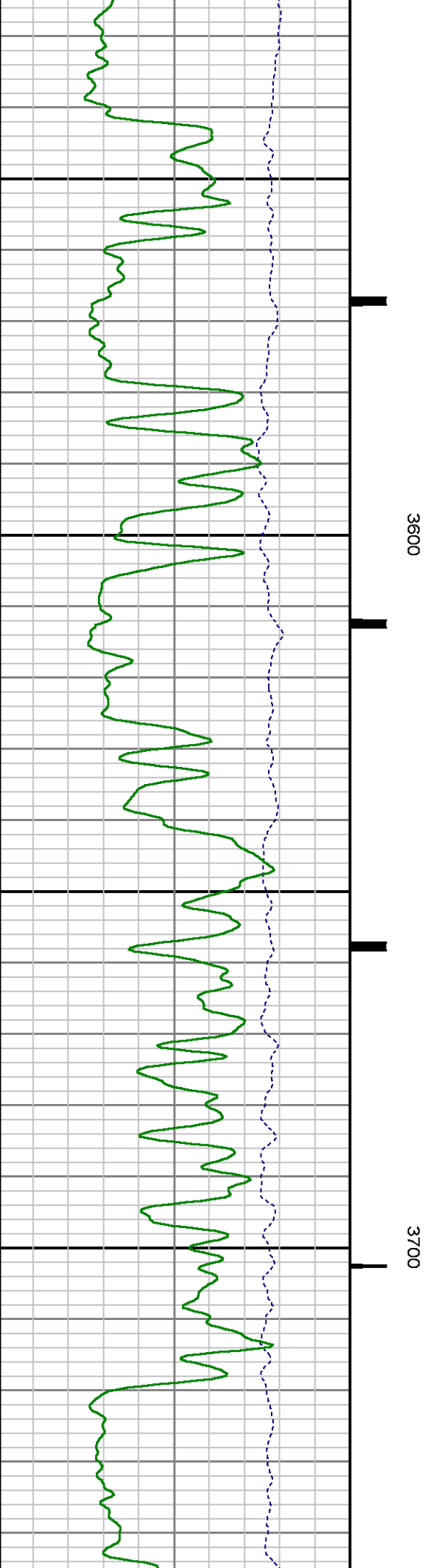
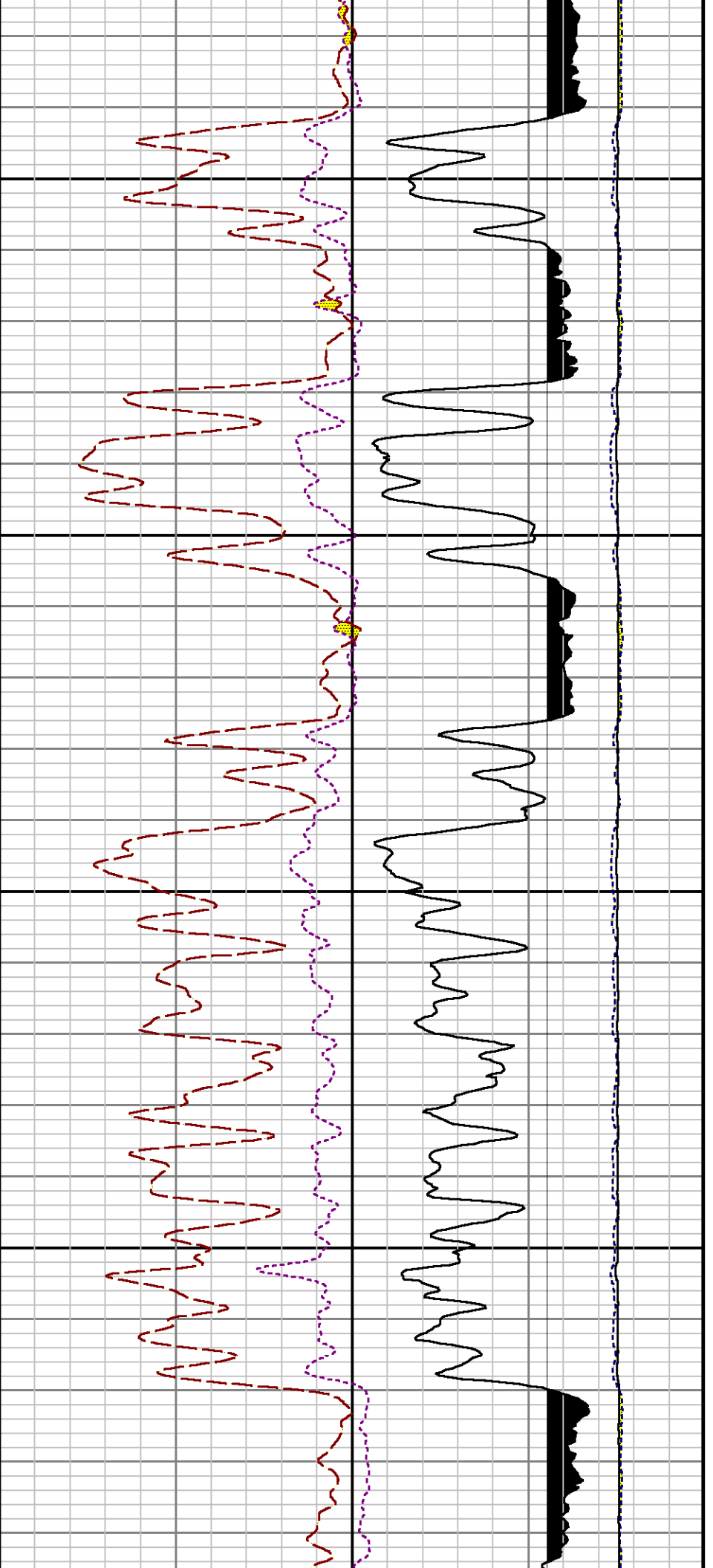
Mode : PlotMgr 5.4.504

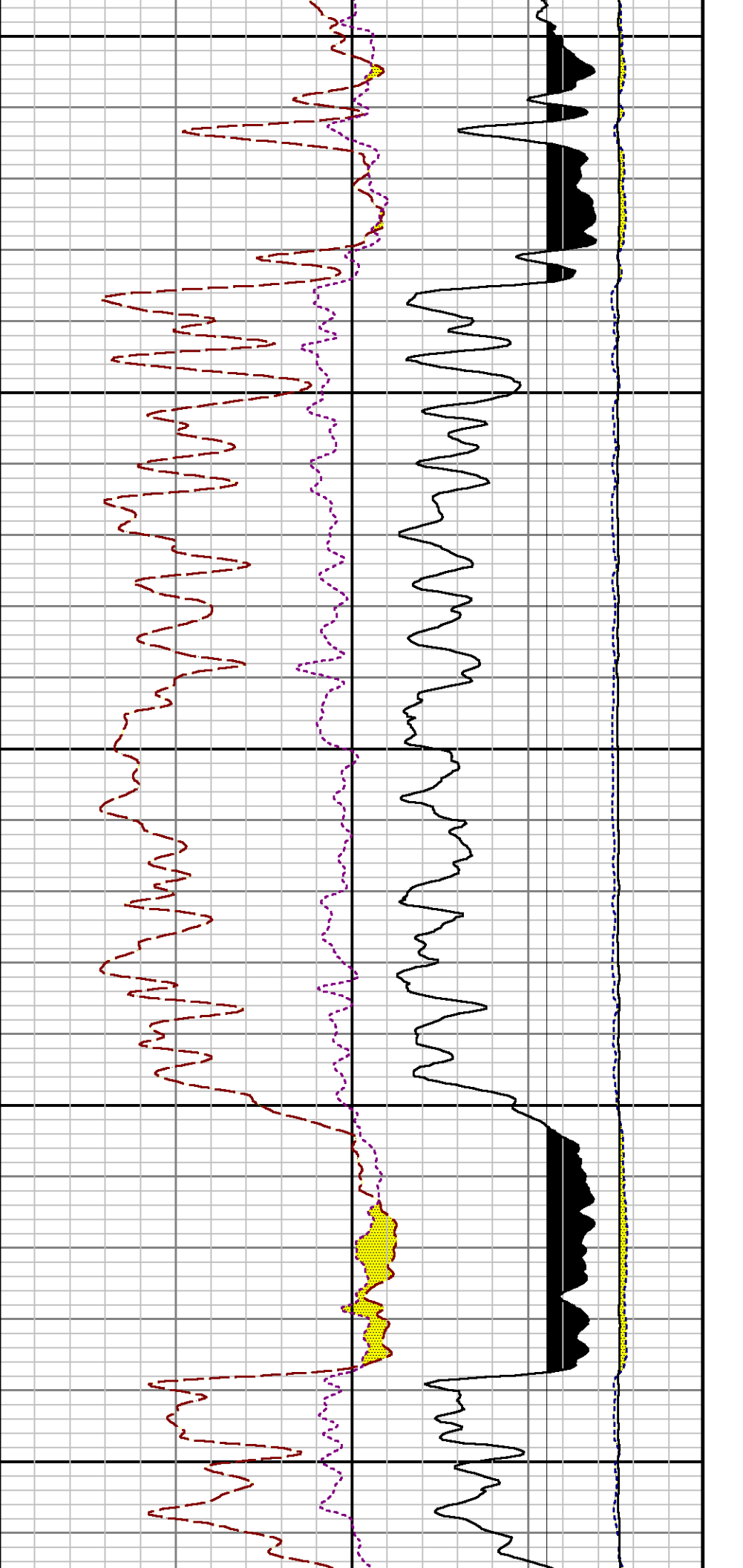
Interval : 3125.00 - 6423.00 feet UP

Created : 6/4/2014 12:49:27 PM



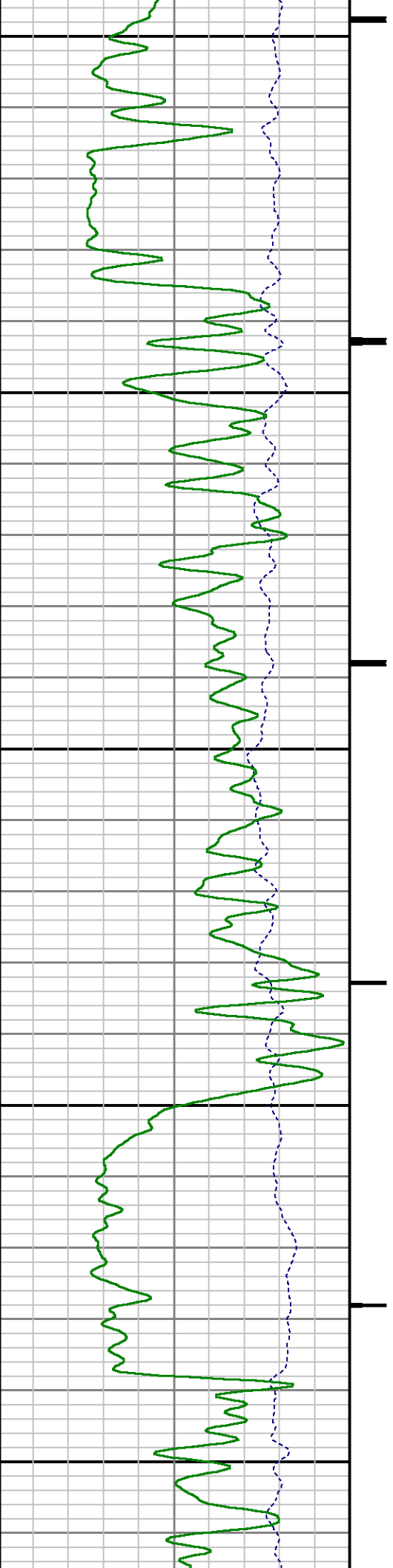


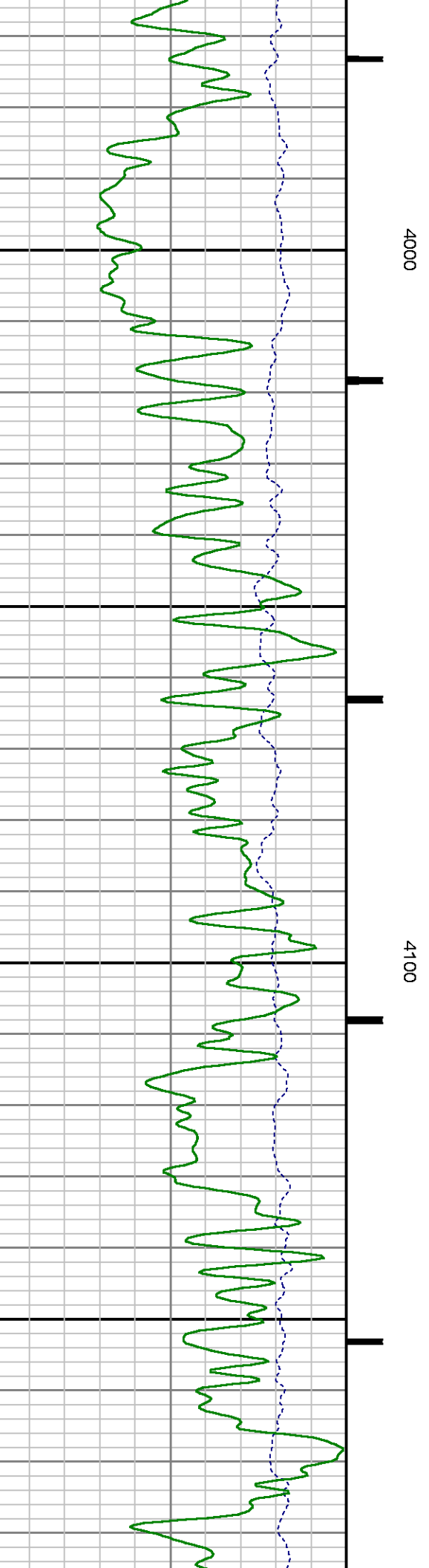
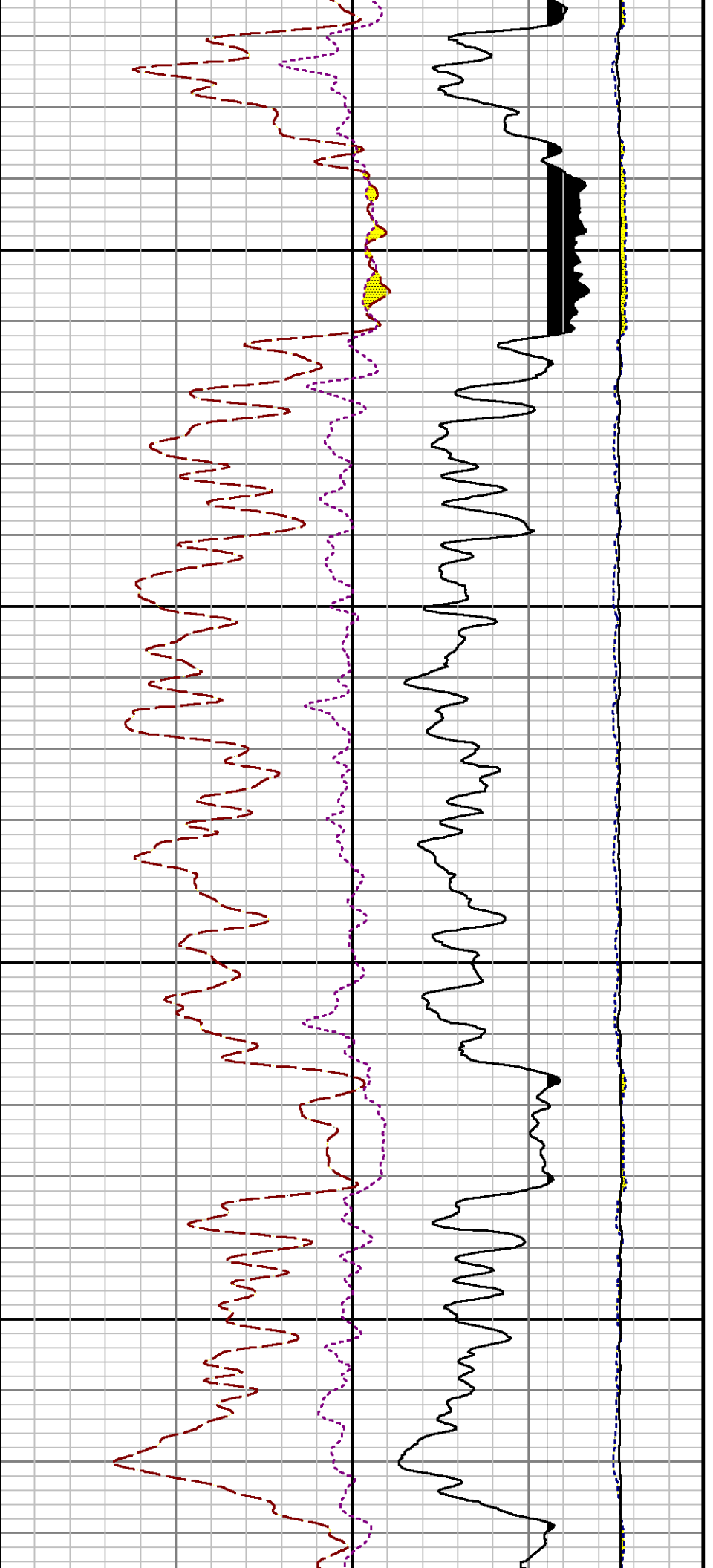


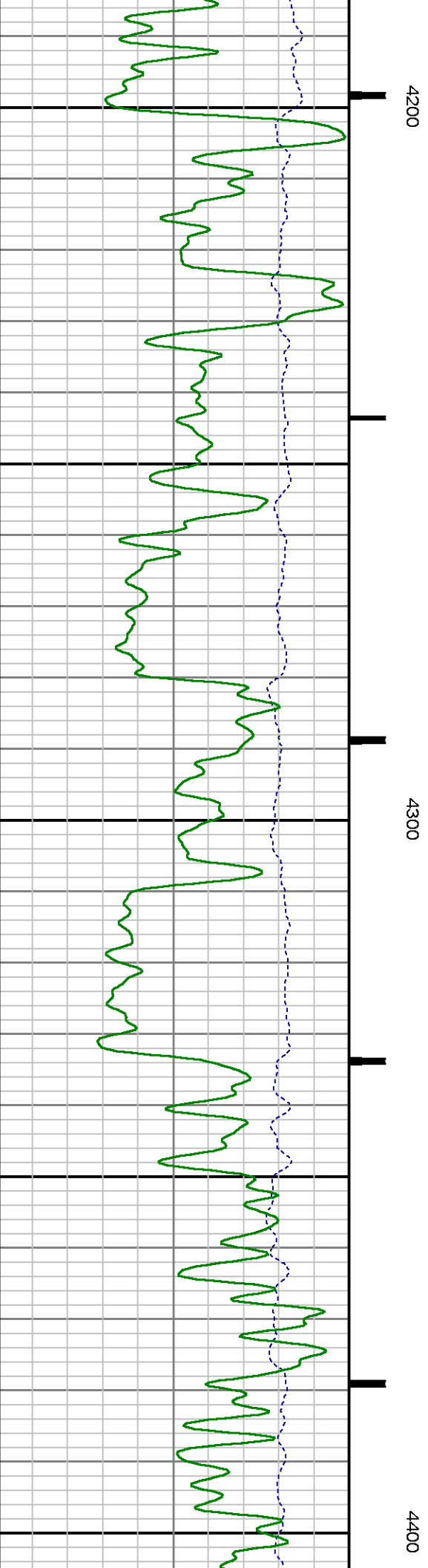
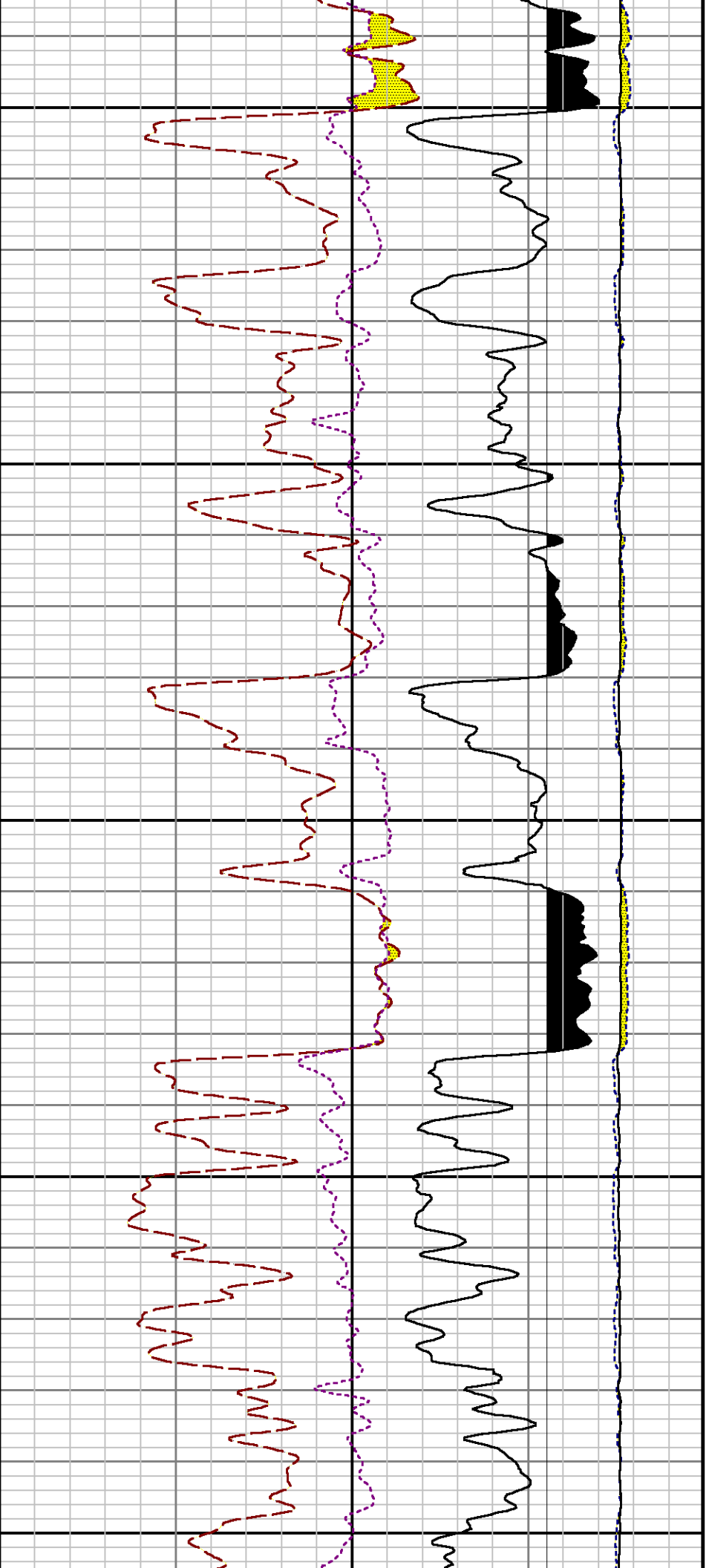


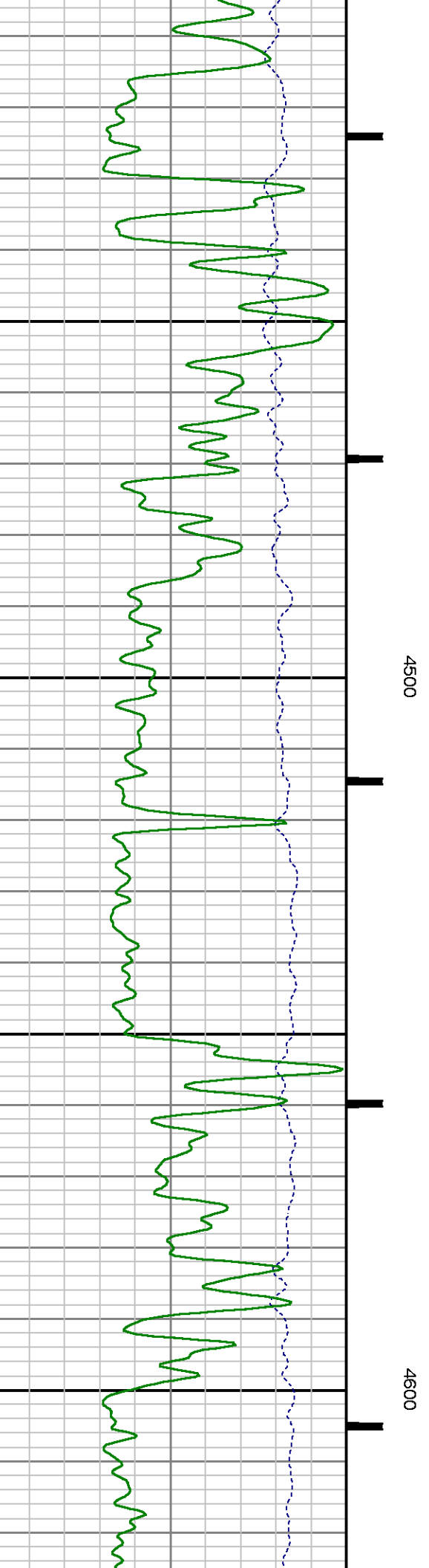
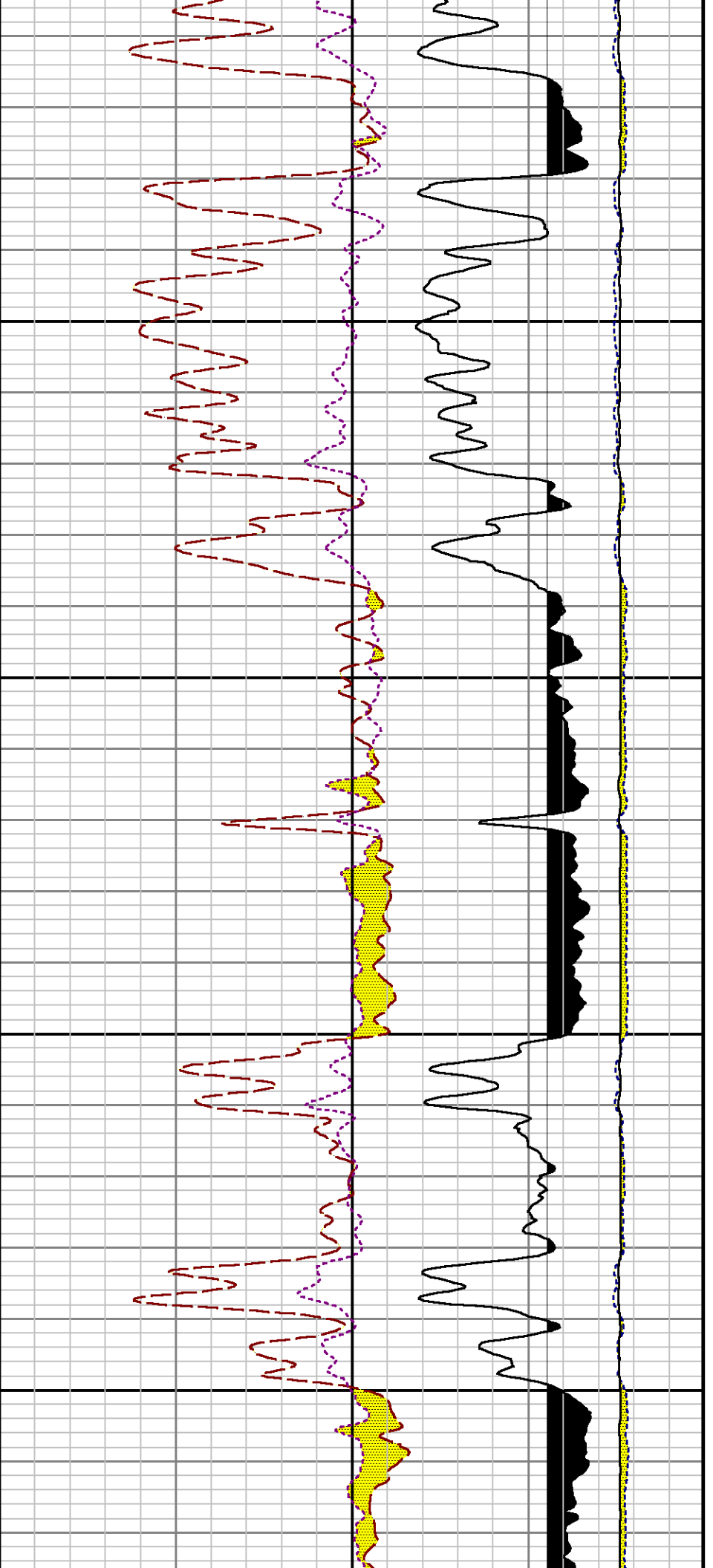
3800

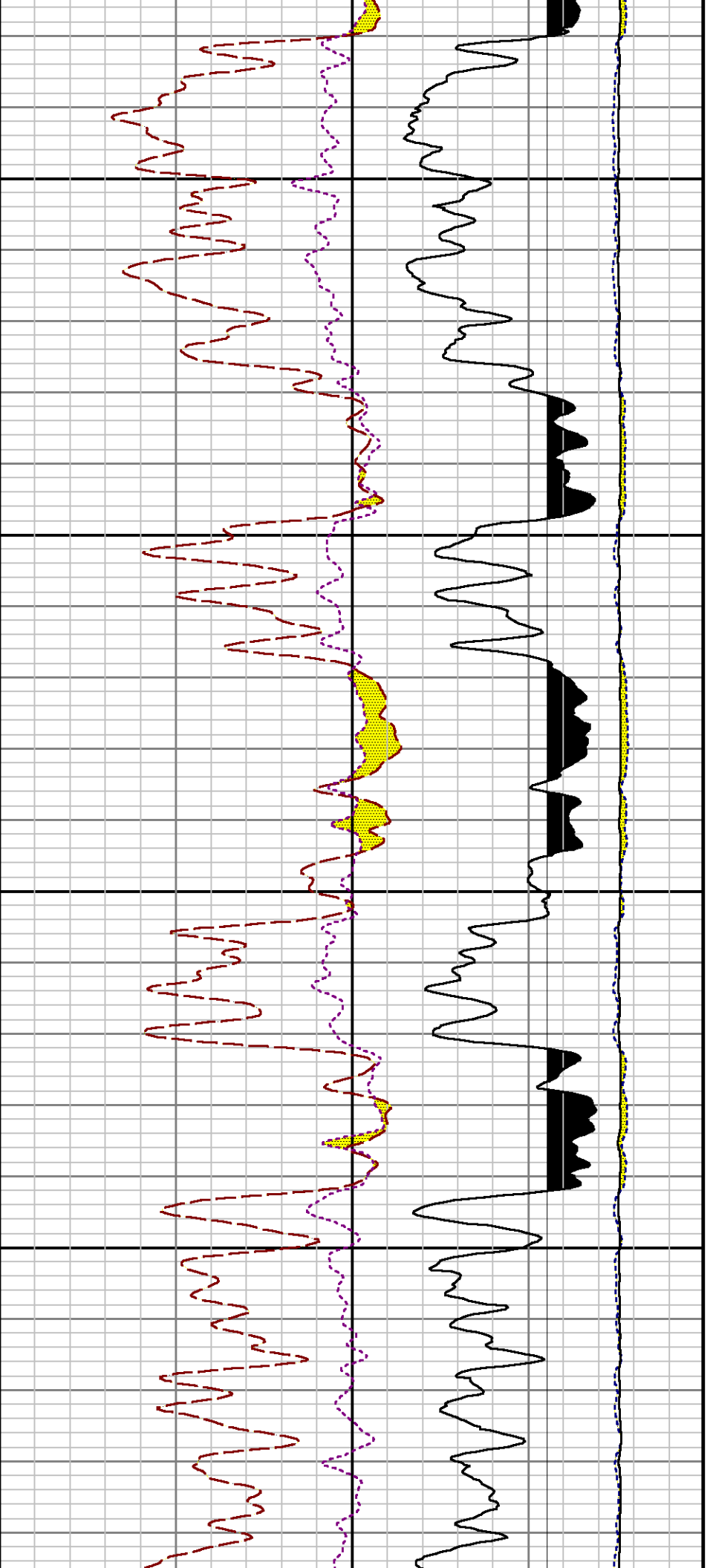
3900





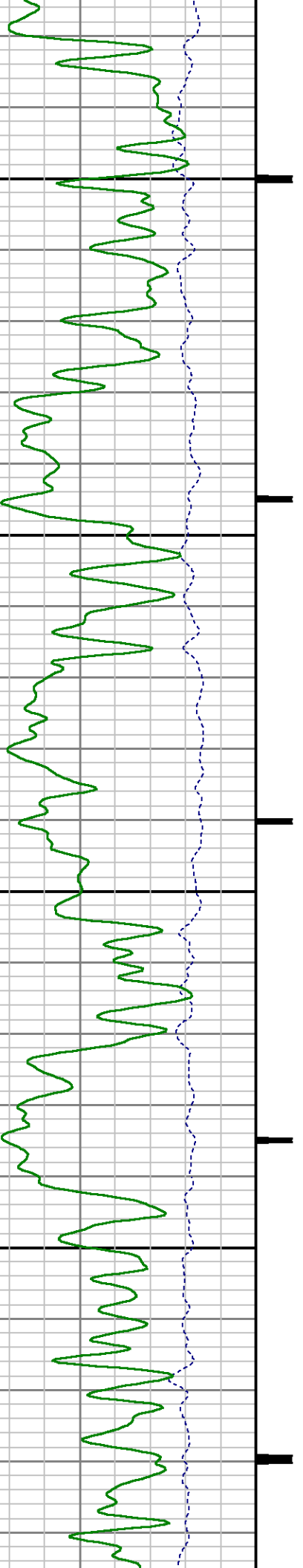


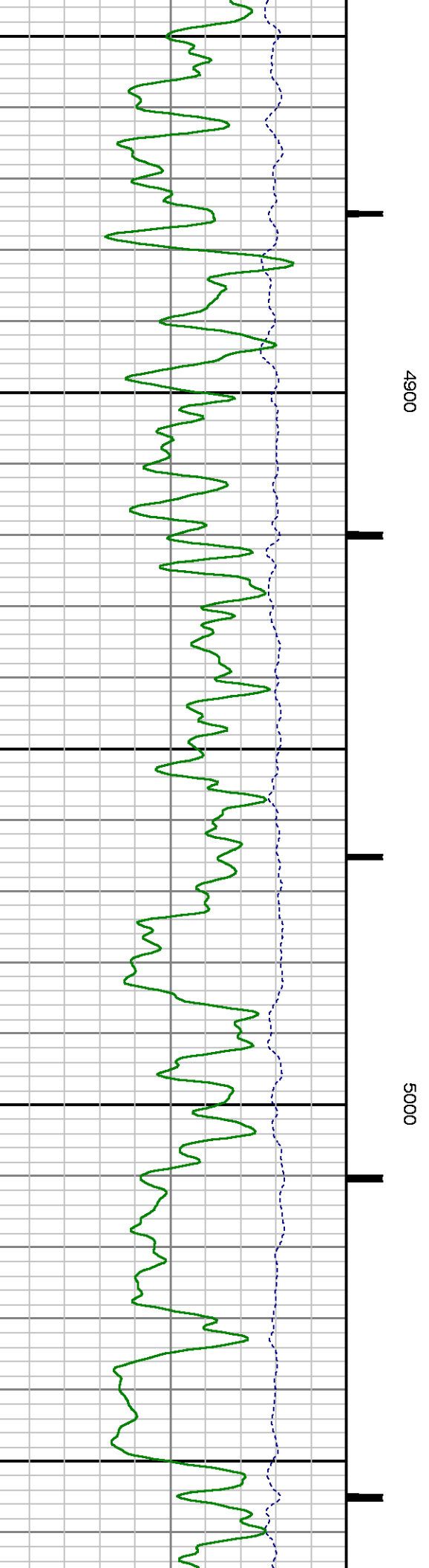
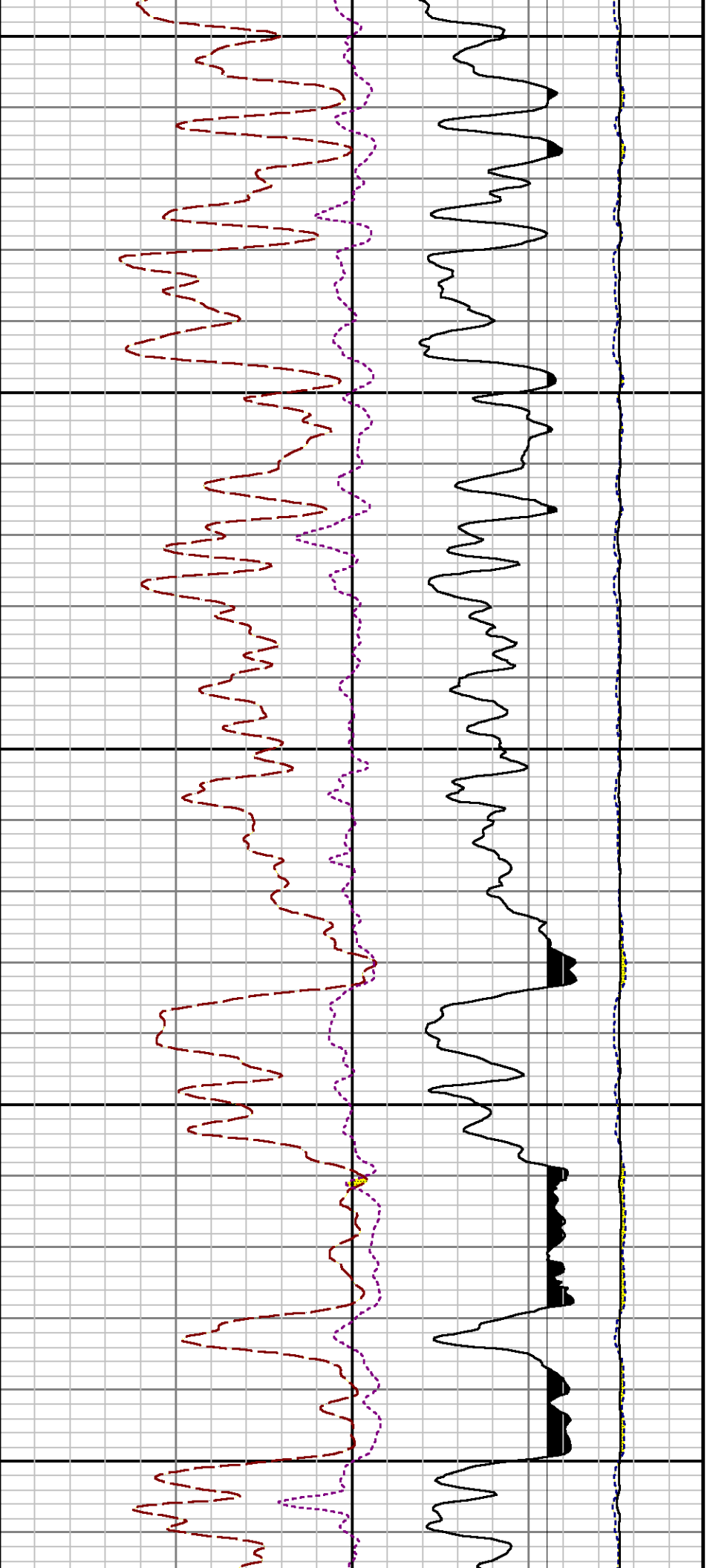


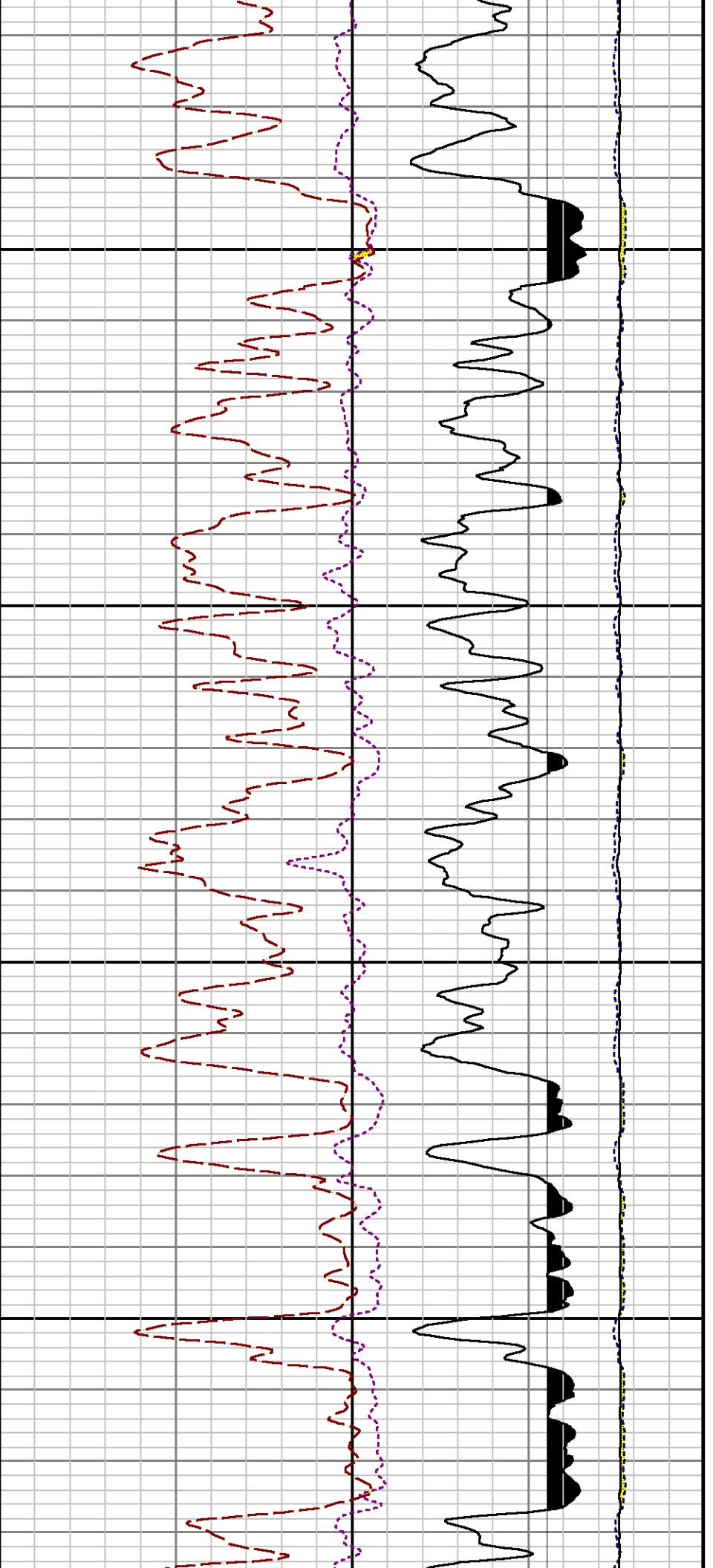


4700

4800

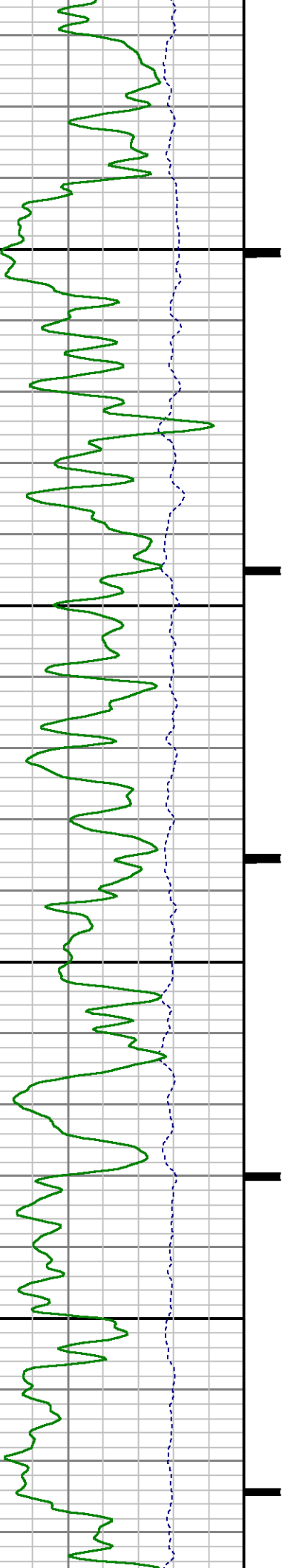


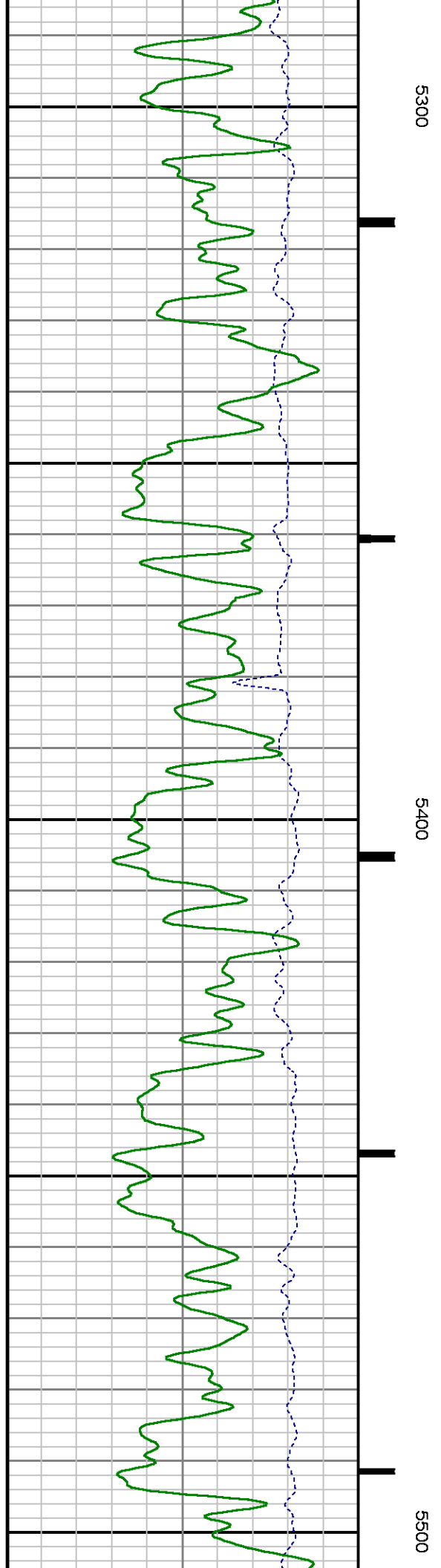
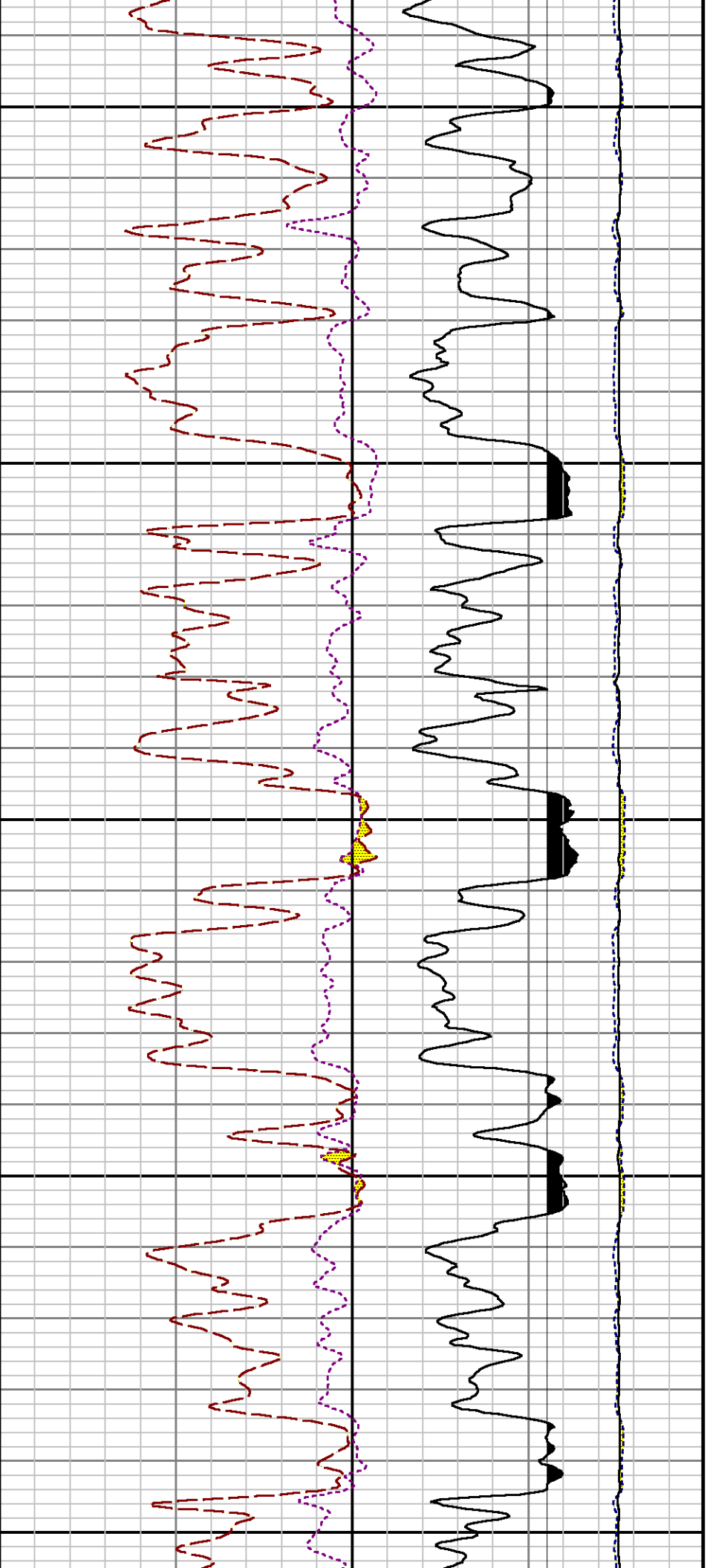


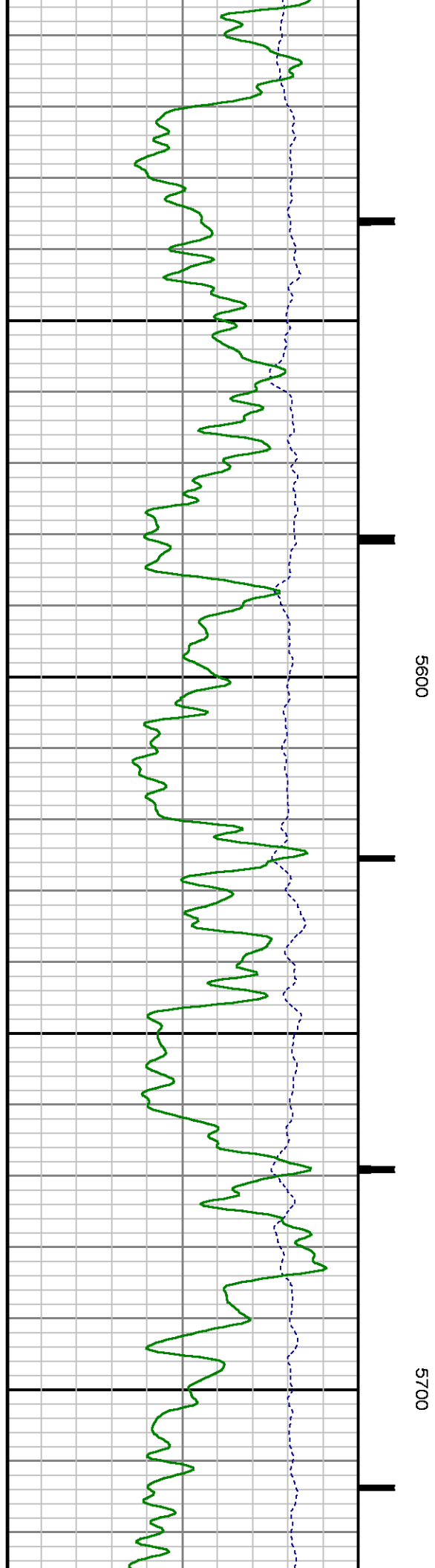
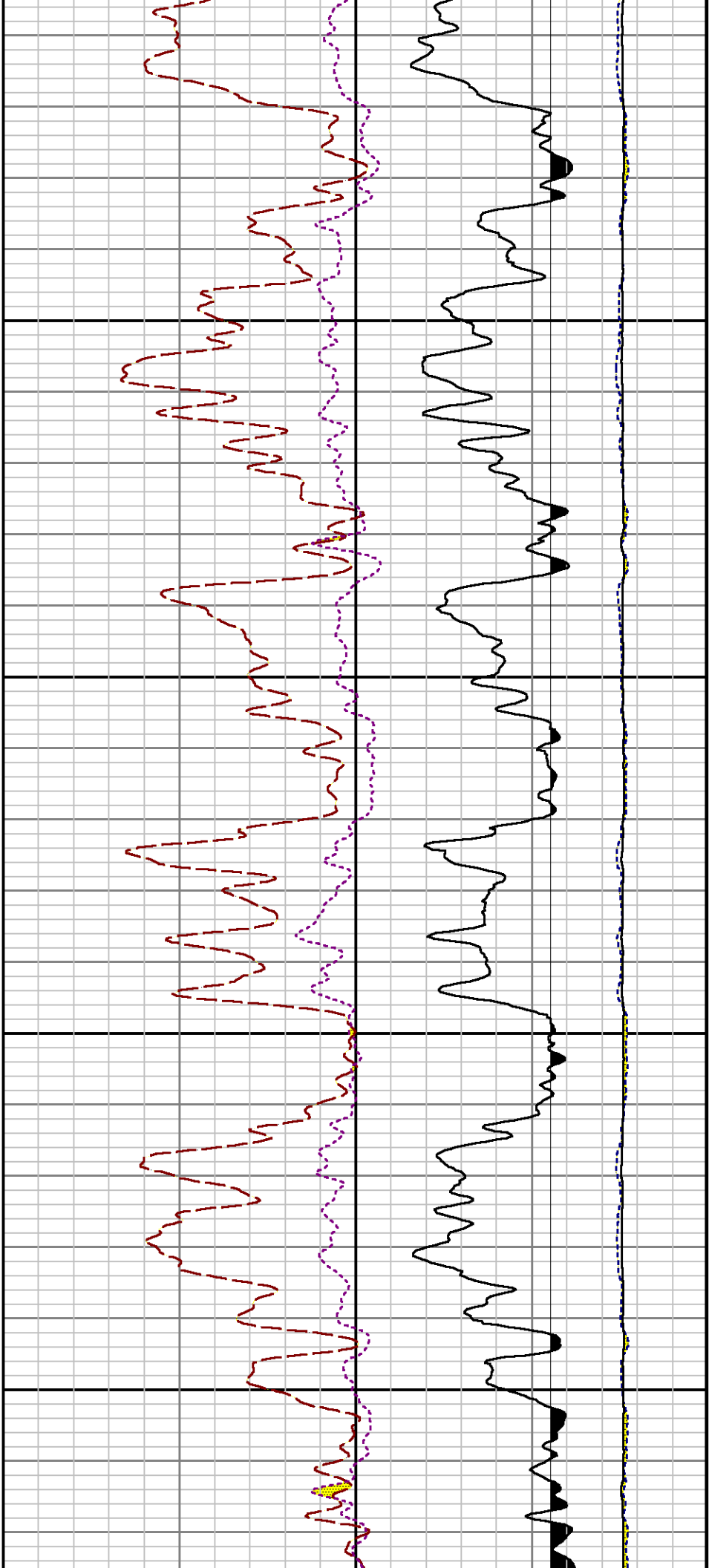


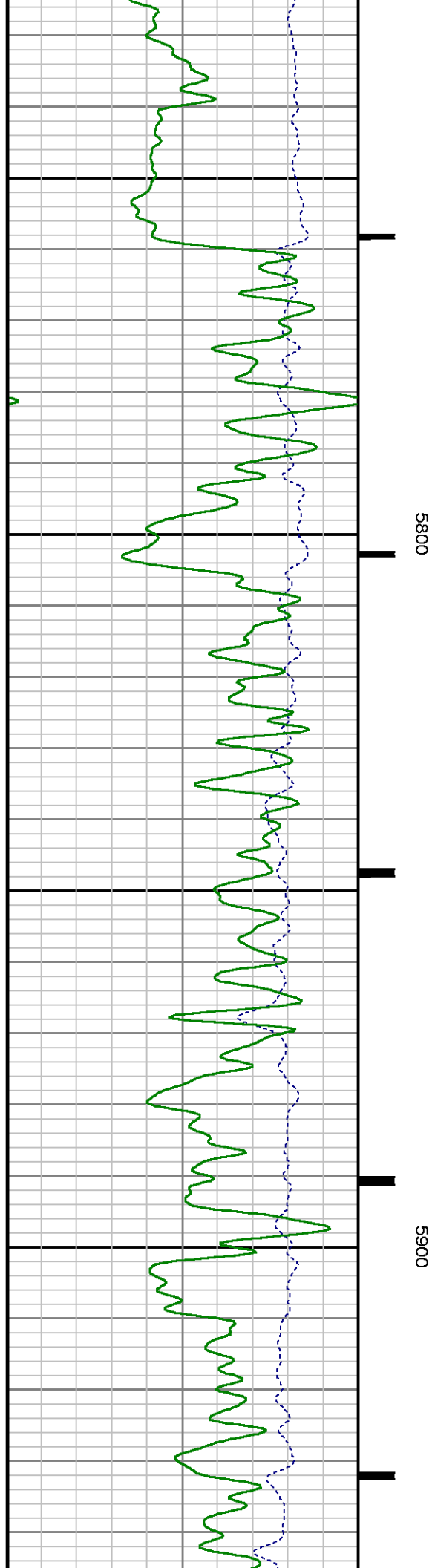
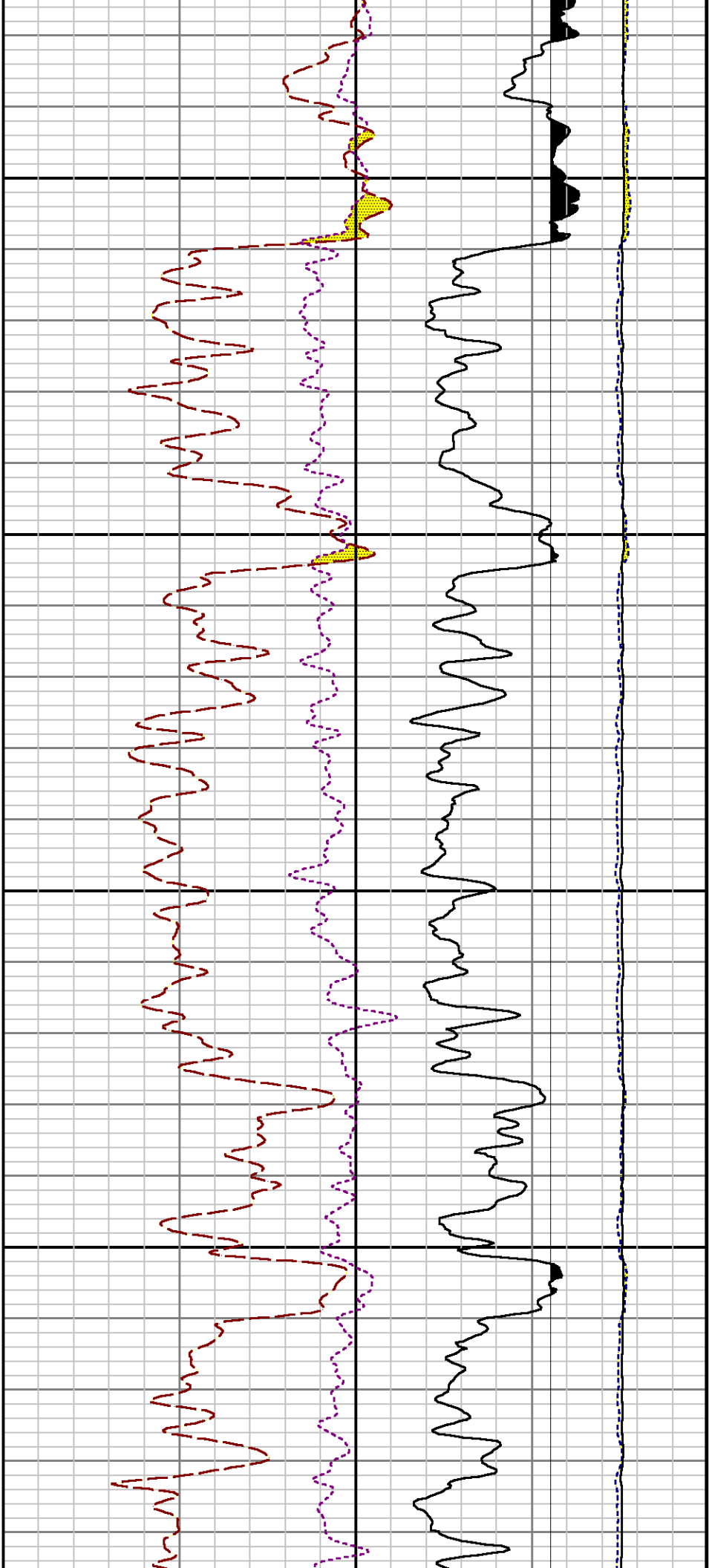
5100

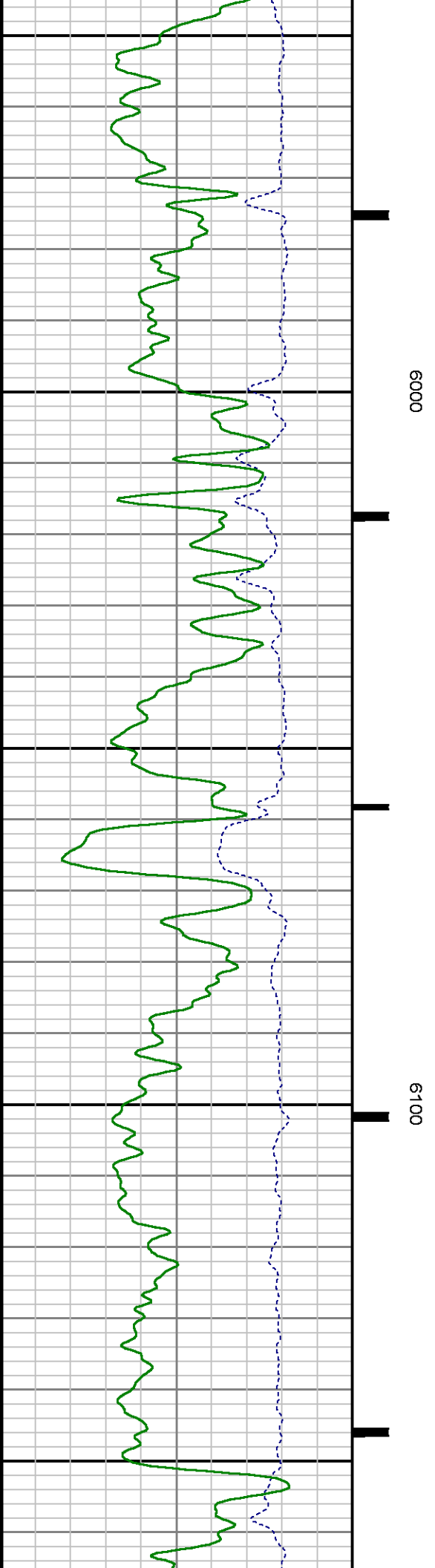
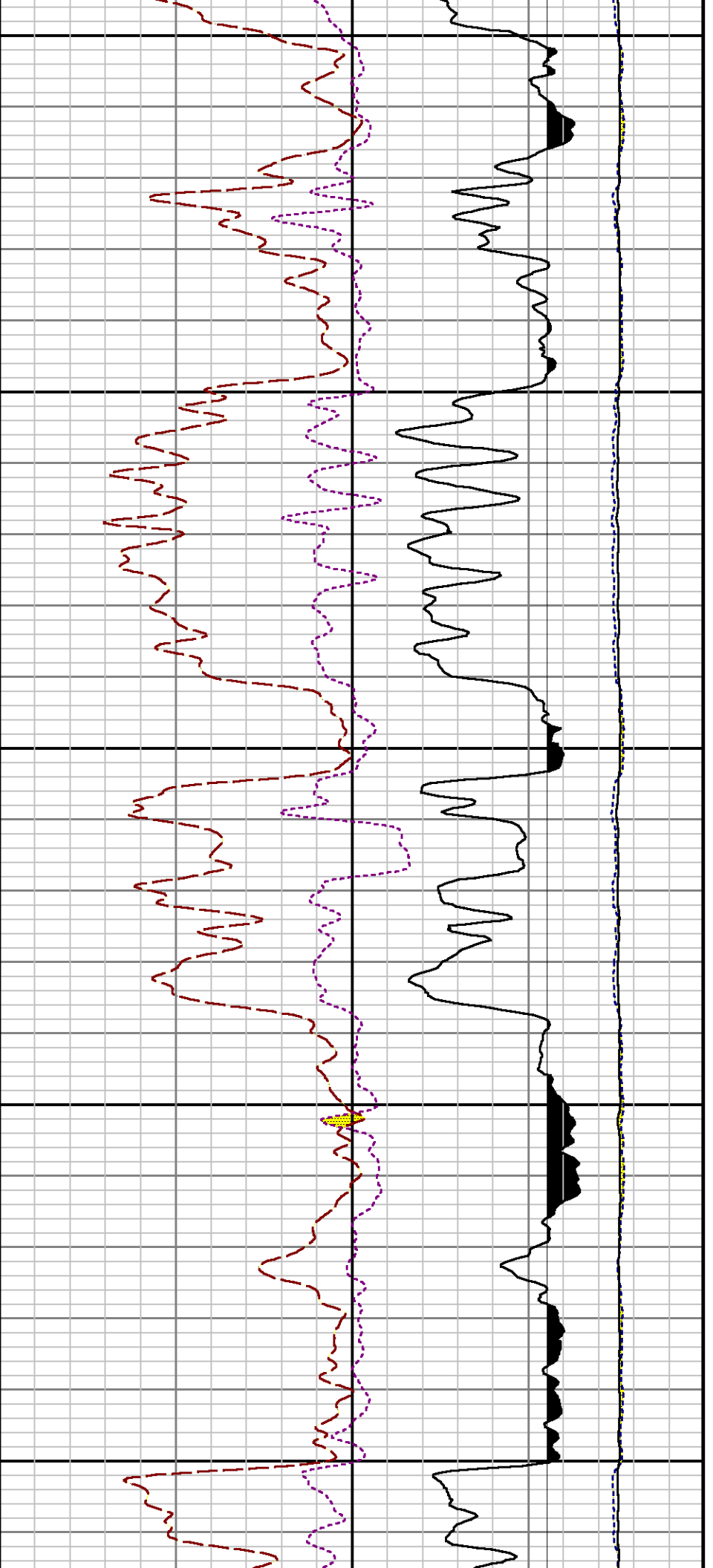
5200

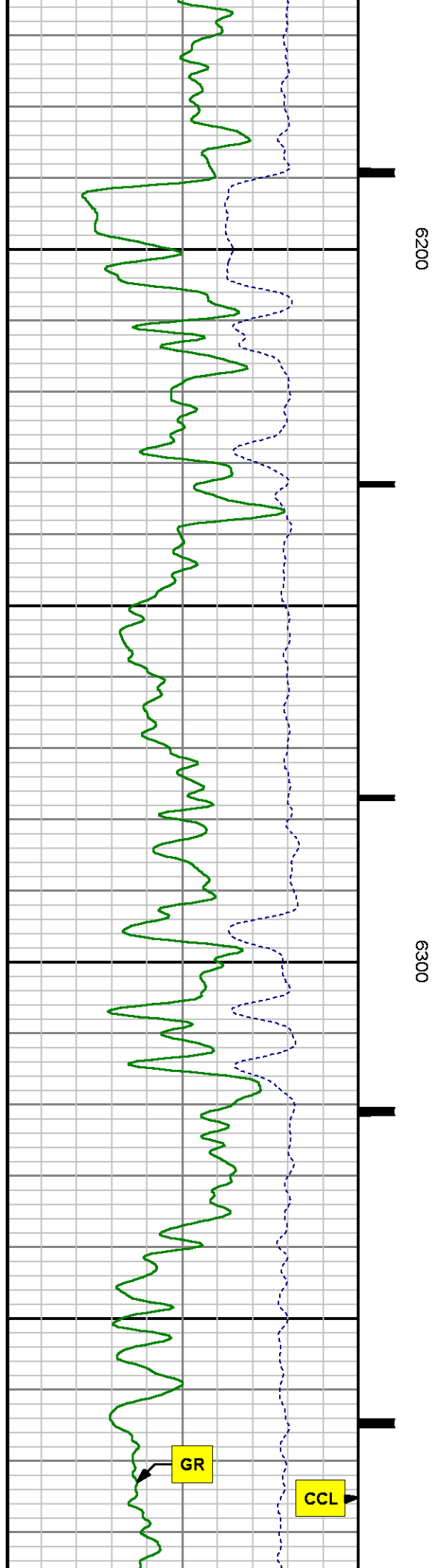
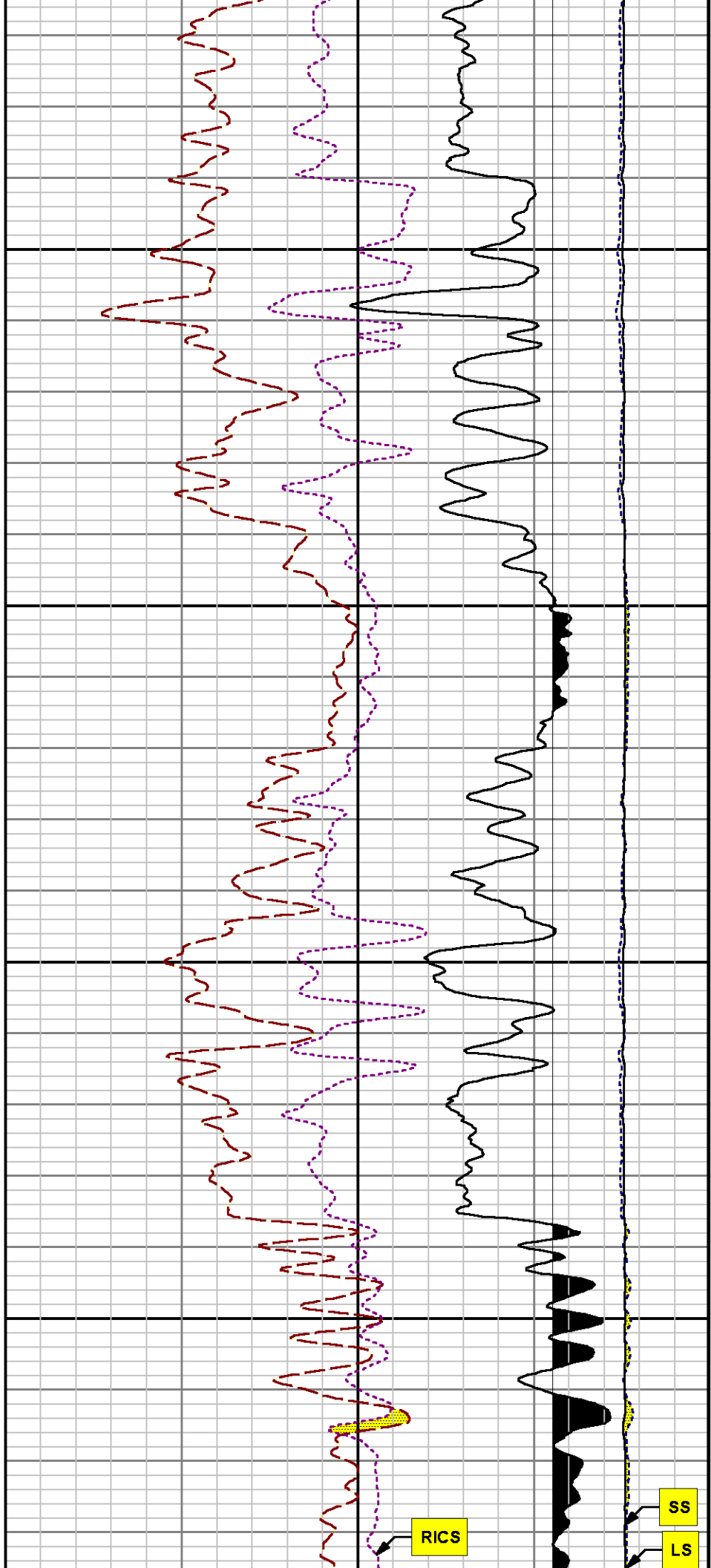


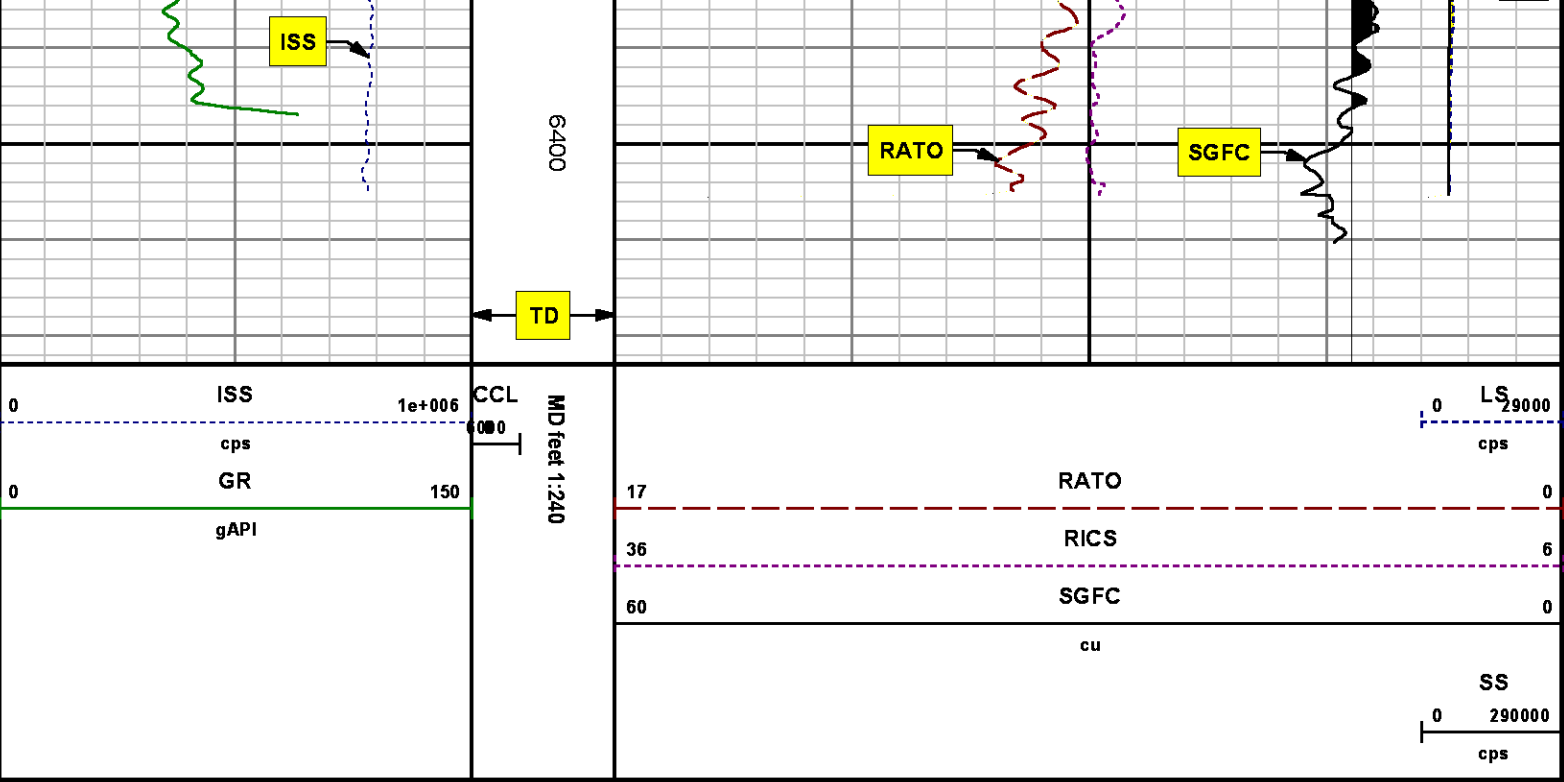












REPEAT SECTION
PNC 3-D MODE

SPL PROCESSING

MEASUREMENT TYPE	PARAMETER	VALUE	UNITS	TOP	BOTTOM
PNC Porosity	Borehole	Cased		5571.470	5900.470
PNC Porosity	Borehole Size	8.750	inch	5571.470	5900.470
PNC Porosity	Casing Size	4.500	inch	5571.470	5900.470
PNC Porosity	Gas Filled	Non Gas Filled		5571.470	5900.470
PNC Porosity	Matrix	Sandstone		5571.470	5900.470
TPS Pressure	Temperature Corr. Source	Fixed (72.00)	degF	5571.470	5900.470

DEPTH OFFSETS
(for Acquired Curves)

SERIES **DEPTH OFFSET** **ACQUIRED CURVES**

8248ED	-26.519	FLTM
8248ED	-24.519	CCL CHV
2812LA	-21.969	GR
8281XA	-12.702	HVC3Q0 SEQ3 AMA3 AML3 BKX CXS
		CPT3Q0 CPT3Q2 CPT3Q3 CPT3Q4 ET3 IXS
		MCS3 MCS3Q0 QCAL3 RGN3 RICX SDA3
		SDL3 SGA3 SGL3 STA3 XS ASPEC3
		AMB3 AMF3 CHF3 IXSC IXSN RATO23
		RICXC RIN13C RIN23 RIN23C SD3D SG3D
		SGB3 SGF3 WDT3 CXSR IXSR XSR
		RICXR
8281XA	-12.291	HVC2Q0 SEQ2 AMA2 AMB2 AMF2 AML2
		BKL CHF2 CLS CPT2Q0 CPT2Q2 CPT2Q3
		CPT2Q4 ET2 ILS LS MCS2 MCS2Q0
		QCAL2 RGN2 RICL RONE23 RTWO23 SDA2
		SDL2 SGA2 SGB2 SGF2 SGK2 SGL2
		STA2 ASPEC2 ILSC ILSN WDT2 RICLC
		CLSR ILSR LSR RICLR
8281XA	-12.041	CPRS HVC1Q0 MV SEQ SEQ1 AMA1
		AMB1 AME1 AMF1 AML1 BKS CHF1
		CSS CORB CORF CPT1Q0 CPT1Q2 CPT1Q2A
		CPT1Q2B CPT1Q2C CPT1Q3 CPT1Q4 CPT1Q5 ET1
		G1 G2 GE1S GE2S ISS MCS1
		MCS1Q0 QA1 QCAL1 QM1 RATO RATO13
		RBOR RGN1 RICS RIN RONE RPOR
		RTWO RIN13 RONE13 RTWO13 SALB SC1
		SDA1 SDL1 SGA1 SGB1 SGBC SGE1
		SGF1 SGFC SGK1 SGL1 SS SS2
		STA1 PD1S PD2S PD3S MD1S MD2S
		MD3S DG1S DG2S DG3S PD1M PD2M
		PD3M MD1M MD2M MD3M DG1M DG2M
		DG3M MVS MA MVM FILV IAM
		TA PVM PVS IAS SSTAT QPD1
		QPD2 QPD3 QMD1 QMD2 QMD3 QDG1
		QDG2 QDG3 QMA QTA QFILV QMV
		QPV QIA DERR DCNT QPK1 QSA1
		PKS1 ASPEC1 H0C FE2XC ISSC RINC
		ISSN RDEN WDT1 RICSC CSSR G1R
		G2R ISSR SSR SS2R RATOR RATO13R
		RBORR RICSR RINR RIN13R RONE RPORR
		RTWOR
8255XA	-0.792	PTFS PTMS
8255XA	-0.775	SPF1 SPFQ TSCP TSDP
8255XA	0.000	DTEM TEMP TNF
SYSTEM	0.000	TEN TTEN

Created by : RPM9, v5.3.1.0

Plotted by : PlotMgr, v5.4.504

Company : WPX ENERGY

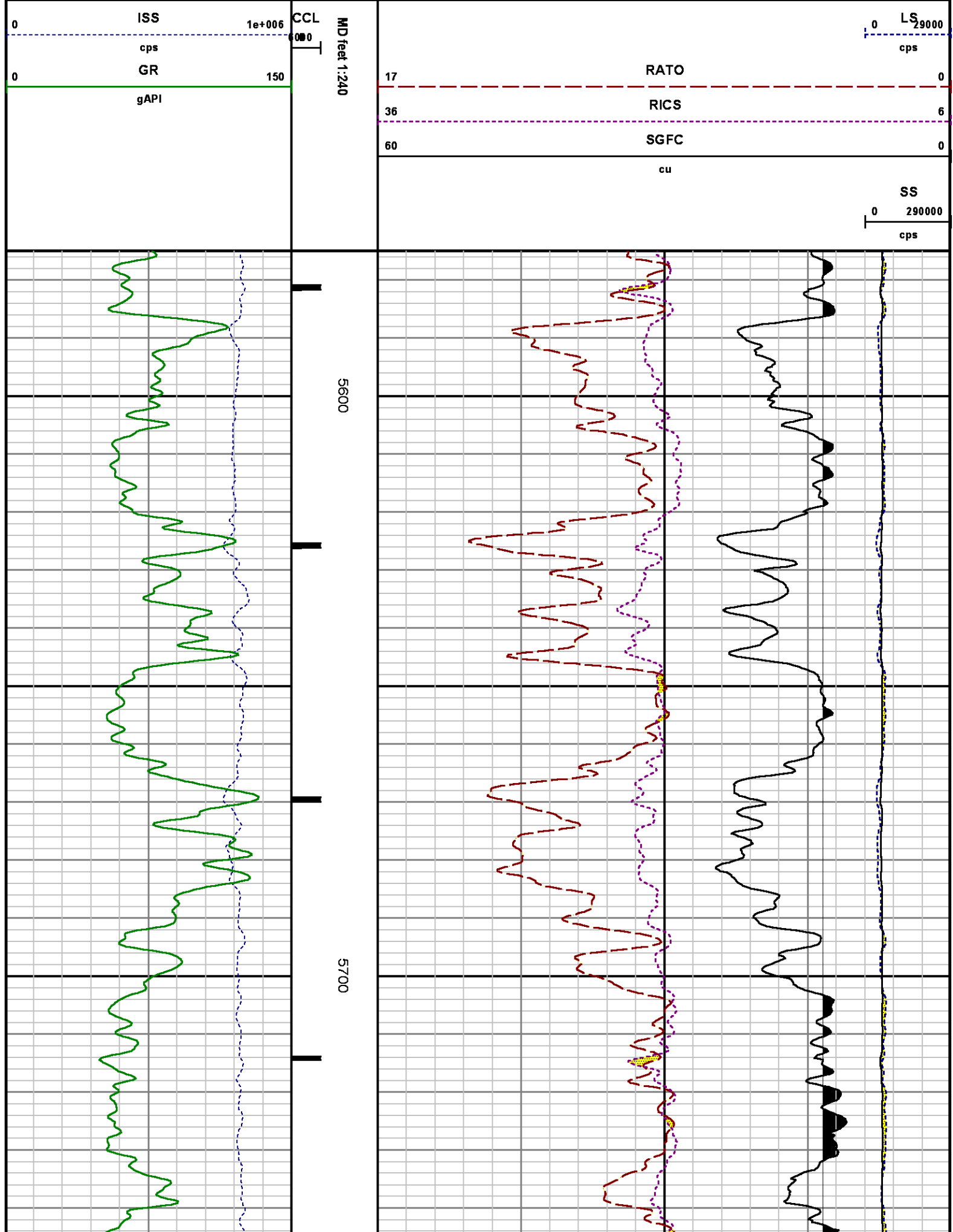
Well : PA 314-6

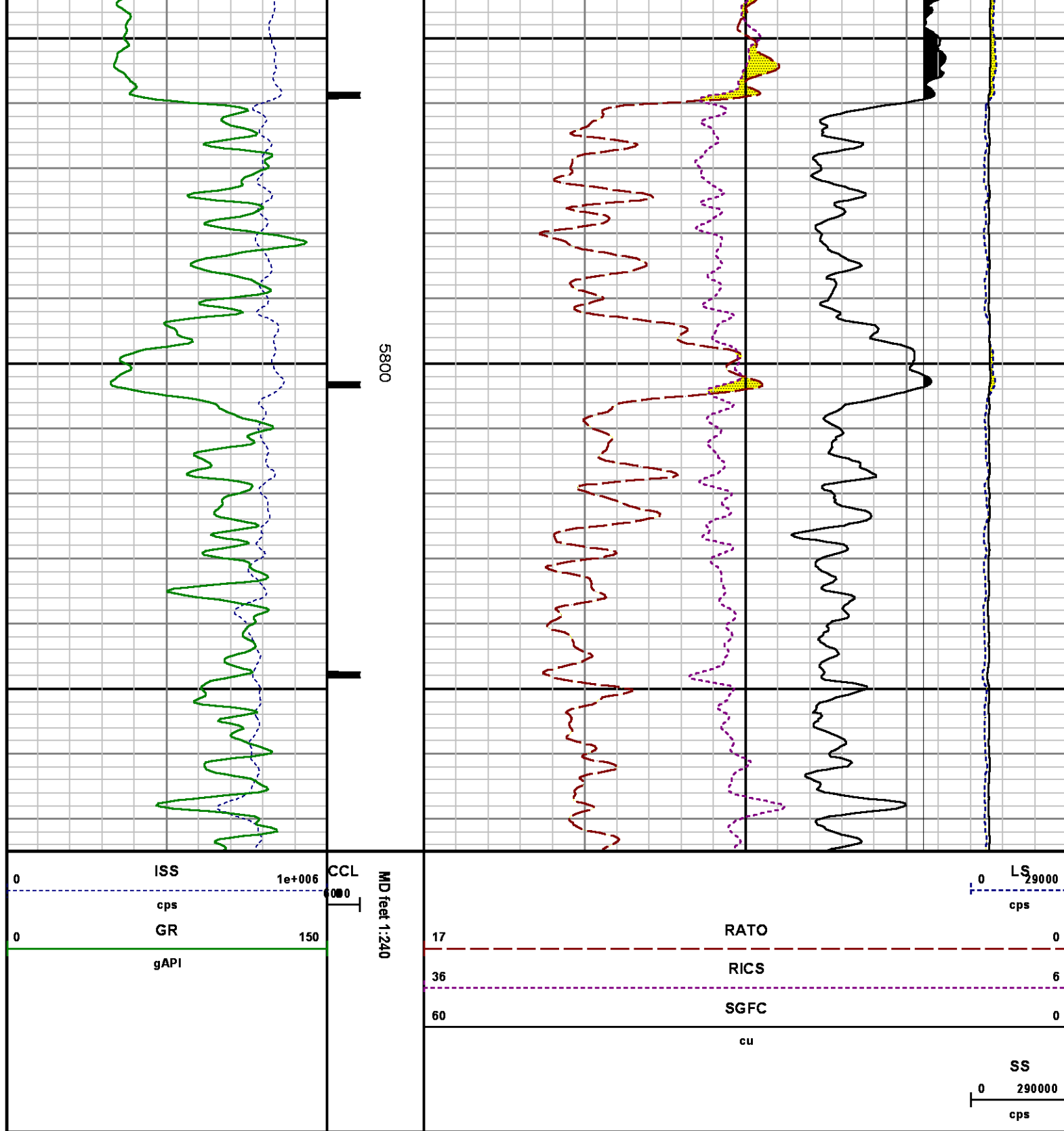
File Name : d:\welldata\wp\pa 314-6\314rpm\repeat.xtf

Mode : PlotMgr 5.4.504

Interval : 5575.00 - 5875.00 feet UP

Created : 6/4/2014 12:15:00 PM





CALIBRATION SUMMARY

PNC

Calibration File: C:\case\calver\PNC\25128.cal

PNC 3D CALIBRATION SUMMARY

DATE/TIME PERFORMED: Wed May 28 14:25:23 2014 TOOL SERIES: 8281XA ASSET: 251 SEQ: 28

Calibrator #

2437XB 112674

Source #

8281AA 10220684

	ISS	Mtr Vltz (V)	SS Gain	LS Gain	XLS Gain	EA Temp (degF)	Sync Delay (usec)	RCAL
Raw Data	828106	120.00	2312.00	2296.00	2306.00	112.04	7.00	0.9845
Interpolated	1300000	137.57	2291.70	2282.99	2299.58			

	ISS	BKS	BKL	BKX	SGA1	SDA1	SGA2	SDA2
Raw Data	828106	7666.94	1276.95	154.73	25.93	0.14	24.40	0.28
					25.35 26.40	0.00 0.20	23.60 24.80	0.00 0.40

	ISS	ILS	IXS	SS	SS2	LS	CSS	CLS
Raw Data	828106	170761.27	26514.92	88684.74	31549.13	8289.12	53739.41	13269.83
Fit Quality %		0.46	0.37	0.30	0.23	0.37	0.22	0.34

	ISS	RBOR	RIN ISS/ILS	RIN13 ISS/IXS	RICS ISS/CSS	RATO SS/LS	RTWO SS2/LS	RONE CSS/CLS
Raw Data	828106	1.44	4.85	31.23	15.41	10.70	3.81	4.05
		1.42 1.45	3.55 5.52	22.20 32.70	10.99 16.34	10.06 11.10	3.57 3.95	3.76 4.22
Fit Quality %		0.06	0.04	0.11	0.19	0.05	0.09	0.09
Reduced	1394228	1.44	4.88	31.36	15.46	10.70	3.81	4.05
		1.42 1.45	4.33 5.52	27.60 32.70	13.70 16.34	10.06 11.10	3.57 3.95	3.76 4.22

GAMMA RAY

Calibration File: C:\case\calver\GR\38528.cal

CALIBRATION SUMMARY

DATE/TIME PERFORMED: Wed May 28 15:33:48 2014 TOOL SERIES: 2812LA ASSET: 385 SEQ: 28

Calibrator #	Background [cps]	Calibrator On [cps]	Multiplicative	Background [api]	Calibrator On [api]	Differential [api]
S2K DA041	60.46	271.39	0.996	60.19	270.19	210.00

Verification File: C:\case\calver\GR\38528.VP

DATE/TIME PERFORMED: Wed May 28 15:39:33 2014

TOOL SERIES: 2812LA

ASSET: 385

SEQ: 28

Calibrator #

Background

Calibrator On

Multiplicative

Background

Calibrator On

Differential

[cps]

[cps]

[api]

[api]

[api]

S2K DA041

60.84

272.11

0.996

60.58

270.91

210.33

TEMPERATURE

Calibration File:

C:\case\calver\TEMP\77456813.cal

CALIBRATION SUMMARY

DATE/TIME PERFORMED: FEB 13 2014

TOOL SERIES: 8255XA

ASSET: 774568

SEQ: 13

	T(0)	T(1)	T(2)	T(3)	T(4)	T(5)
Coefficients	-9.274653e+000	1.055639e-001	2.143764e-006	-2.782846e-010	0.000000e+000	0.000000e+000

TOOL DIAGRAM

OTA SHORT CABLE HEAD**PCM POWER SUPPLY**

Series 8250EA
 Mnemonic PCM
 Diameter 1.70"
 Weight 18.00 lb
 Length 3.86'
 Temp Rating 350.00 °F

TELEMETRY / CCL

Series 8248EA
 Mnemonic PCM
 Diameter 1.70"
 Weight 20.00 lb
 Length 4.46'
 Measure Point 1.00' CCL MP
 Temp Rating 350.00 °F
 Press Rating 15000.00 PSI

SONDEX GAMMA RAY

Series 2812LA
 Mnemonic SNDX
 Diameter 1.69"

33.24'

CCL MP 25.15'

MP 22.70'

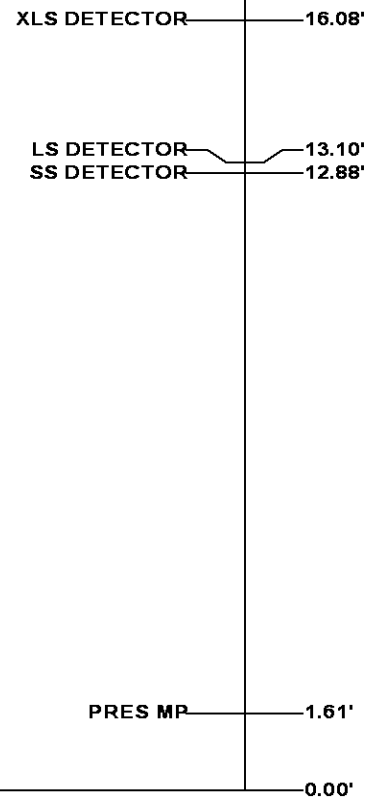
RESERVOIR PERFORMANCE MONITOR

Series	8281XA
Mnemonic	RPM
Diameter	1.70"
Weight	75.00 lb
Length	18.58'
Measure Point	9.49' SS DETECTOR
Measure Point	9.72' LS DETECTOR
Measure Point	12.69' XLS DETECTOR
Temp Rating	350.00 °F
Press Rating	20000.00 PSI

TEMPERATURE / PRESSURE

Series	8255XA
Mnemonic	SRPL
Diameter	1.70"
Weight	13.00 lb
Length	3.30'

Total Length: 33.24'
Total Weight: Not Available
Max Diameter: 0' 1.70"

**Baker Atlas****CASE****Company** WPX ENERGY**Well** PA 314-6**Field** PARACHUTE**County** GARFIELD **State** CO**Location**

SHL: 750' FSL & 743' FWL

BHL: 879' FSL & 784' FWL

SEC 6 **TWP** 7S **RGE** 95W**Elevations****KB** 5179**DF****GL** 5153**File No:**

CH086758

API No:

05045222330000

6 7S 95W**PA 14-6 PAD****NABORS 574**