

LEGEND

- ◆ ~ FOUND ORIGINAL STONE
- ~ FOUND GLO BRASS CAP ON STEEL POST
- ⊕ ~ FOUND No.6 REBAR AND 2 1/2" ALUMINUM CAP BY LS38019
- ~ SET No.6 REBAR AND 2 1/2" ALUMINUM CAP BY LS24963
- ~ WELL HEAD
- (M) ~ MEASURED IN FIELD
- L ~ 90° SYMBOL
- WC ~ WITNESS CORNER

BASIS OF BEARING:

THE LINE FROM THE E1/4 CORNER TO THE NE CORNER OF SECTION 29, TOWNSHIP 11 NORTH, RANGE 57 WEST, 6TH P.M., WAS ASSUMED TO BEAR N.0°33'52"W. AS MONUMENTED AND SHOWN HEREON.

CERTIFICATE OF SURVEY:

I, David G. Nicewicz, a Registered Land Surveyor in the State of Colorado, do hereby certify that the above described parcel has been surveyed by me and under my direct supervision, that such survey is accurately represented hereon, is based upon my knowledge, information and belief, is in accordance with applicable standards of practice, and is not a guaranty or warranty either expressed or implied. I further certify that the monuments shown hereon actually exist, and that their positions are as shown.

David G. Nicewicz, P.L.S. No. 24963
(for and on behalf of URS Corporation)

GAS WELL LOCATION

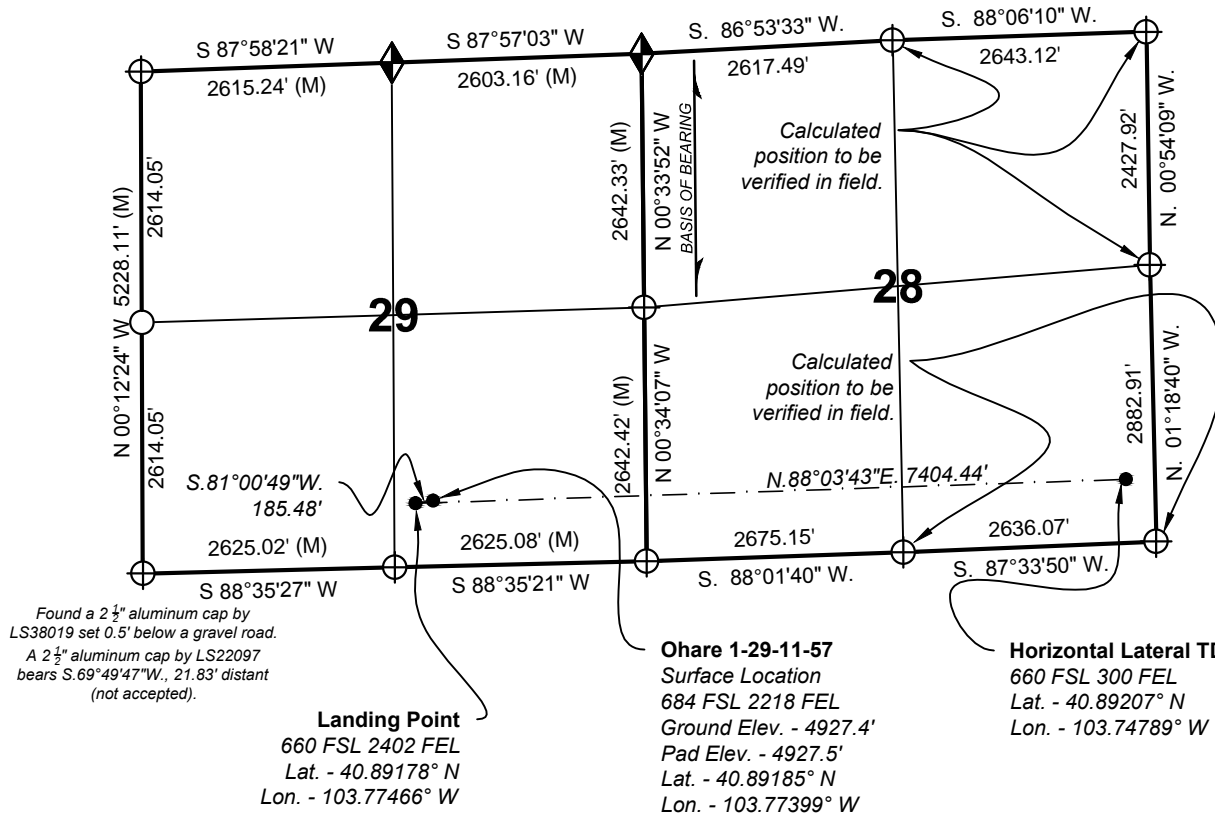
CARRIZO NIOBRARA LLC

Ohare 1-29-11-57

Located in the S 1/2 Section 28 and SE 1/4 Section 29
T.11N., R.57W., 6th P.M., Weld County, Colorado

SURVEYED BY: DGN	DWG DATE: 07/21/14	David G. Nicewicz, PLS cell: (720) 456-1104 david.nicewicz@urs.com
DRAFTED BY: MLD	SCALE: 1" = 2000'	

JOB NO.: 22244051 SHEET NO. 1 of 1



NOTES:

- NATURAL GROUND, NO IMPROVEMENTS
- ALL DIMENSIONS TO SECTION LINES ARE MEASURED PERPENDICULARLY
- VERTICAL DATUM: NAVD '88 DATUM, BENCH MARK = NGS ALUM. ROD "GOCU", ELEV. OF 4983.60'
- HORIZONTAL DATUM: NAD 83 DATUM
- GPS OPERATOR: D. NICEWICZ, PDOP = 1.0 (MAX)
- DRAWING DATE: July 15, 2014
- FIELD DATE: July 10, 2014