



District Office
3801 Carson Avenue
Evans, CO 80620
970-506-9272
www.petd.com

April 30, 2014

Becker Ranch, LLC
Attn: Mr. Richard Becker, Manager
25605 WCR 36
LaSalle, CO 80645-9726

Notice of Drilling Operations

Hand Delivered

Received this 30TH day of April, 2014

By: Richard Lee Becker

Print Name: RICHARD LEE BECKER. M.G.R.

Well Name: Becker Ranch 5M-203, 5R-243 (5MR-HZ Pad)
5U-243 (5RU-HZ Pad)

Township 3 North, Range 64 West, 6th P.M.

Section 5: N/2 (Surface Hole Locations)

Section 5: S/2 (Bottom hole Locations)

Weld County, Colorado

(See map attached for specific locations)

Dear Mr. Becker:

In accordance with the requirement of Rule 305.f. of the Colorado Oil and Gas Conservation Commission (COGCC) rules and regulations, this letter serves as a 30-day notice by PDC Energy, Inc. (PDC), as operator of record, of its intention to conduct drilling operations on the captioned wells. Reference is made to our consultation meeting we had on April 22, 2014 at the site with you and PDC Operations personnel. We had additional discussions prior to and after that date, when we discussed the location of the well sites, access roads, production facilities and other related matters. For the purposes of having our Initial Consultation, the April 22, 2014 shall be considered as that meeting. The well locations have been be staked and I have attached select copies of the multi page survey. Pursuant to Rule 306, would you please complete, sign and return the enclosed request letter to request a consultation or to designate a representative for surface consultation for our records, even though the consultation has been done? Also enclosed is a site diagram that depicts the area, per COGCC rules, within which the well(s) may be located, and the proposed location of the well(s), access road(s), and production facilities. Additionally, enclosed please find a copy of the COGCC's brochure describing surface owner rights and responsibilities, and a copy of the COGCC's on-site inspection policy. I have also enclosed a Waiver Letter (related to the well locations) that is required to be signed and attached to PDC's drilling permit application with the COGCC. It is requested that you sign and return this Waiver. As surface owner you have the responsibility for notifying any affected tenant farmer, lessee or other party that may own or have an interest in any crops or surface improvements that could be affected by these proposed operations. Should you have any questions regarding our operations or this notice, please feel free to contact me at contact me at (303) 517-3010.

Sincerely,

PDC Energy, Inc.

Mac Neumann

Mac Neumann, Agent

cc: Megan Lowe

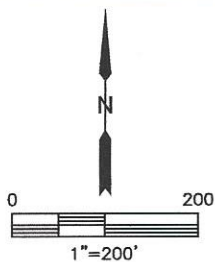
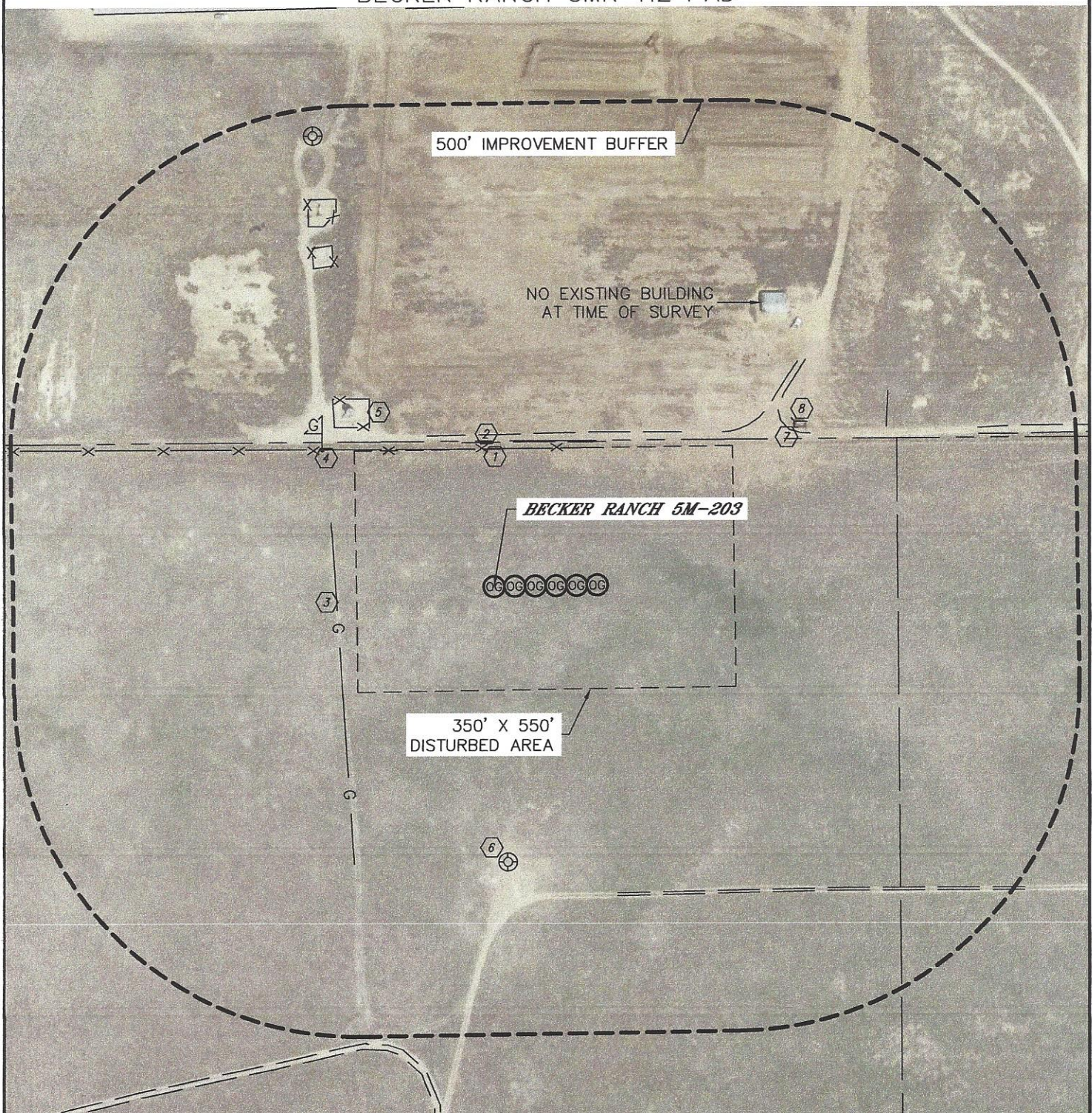


Lat40°, Inc. 1635 Foxtrail Drive, Suite 325 Loveland, CO 970-776-3321

LOCATION DRAWING

BECKER RANCH 5MR-HZ PAD

SECTION: 5
TOWNSHIP: 3N
RANGE: 64W





Lat40°, Inc. 1635 Foxtrail Drive, Suite 325 Loveland, CO 970-776-3321

LOCATION DRAWING
BECKER RANCH 5MR-HZ PAD

SECTION: 5
TOWNSHIP: 3N
RANGE: 64W

IMPROVEMENTS:

(MEASURED FROM THE PROPOSED BECKER RANCH 5M-203 WELL LOCATION)

- ① NO EXISTING BUILDING UNITS WITHIN IMPROVEMENT BUFFER
- ② NO EXISTING BUILDINGS WITHIN IMPROVEMENT BUFFER
- ③ FENCE 200' N, 616' NE
- ④ ROAD 209' N, ±350' NW, 412' NE, 450' S
- ⑤ GAS LINE 230' W
- ⑥ GAS MARKER 319' NW
- ⑦ EX. PRODUCTION EQUIPMENT (NOBLE ENERGY)
293', 521' & 578' NW
- ⑧ EX. WELL HEAD 400' S, 704' NW
- ⑨ EDGE OF CONCRETE 494' NE
- ⑩ CONCRETE WALL 498' NE

NEAREST CULTURAL ITEMS:

BUILDING: 840' N, BUILDING UNIT: 1611' NW, HIGH OCCUPANCY BUILDING UNIT: 5280'+,
DESIGNATED OUTSIDE ACTIVITY AREA: 5280'+, PUBLIC ROAD: 1748' E (CR 53),
ABOVE GROUND UTILITY: 1000' NE, RAILROAD: 5280'+, PROPERTY LINE: 210' N

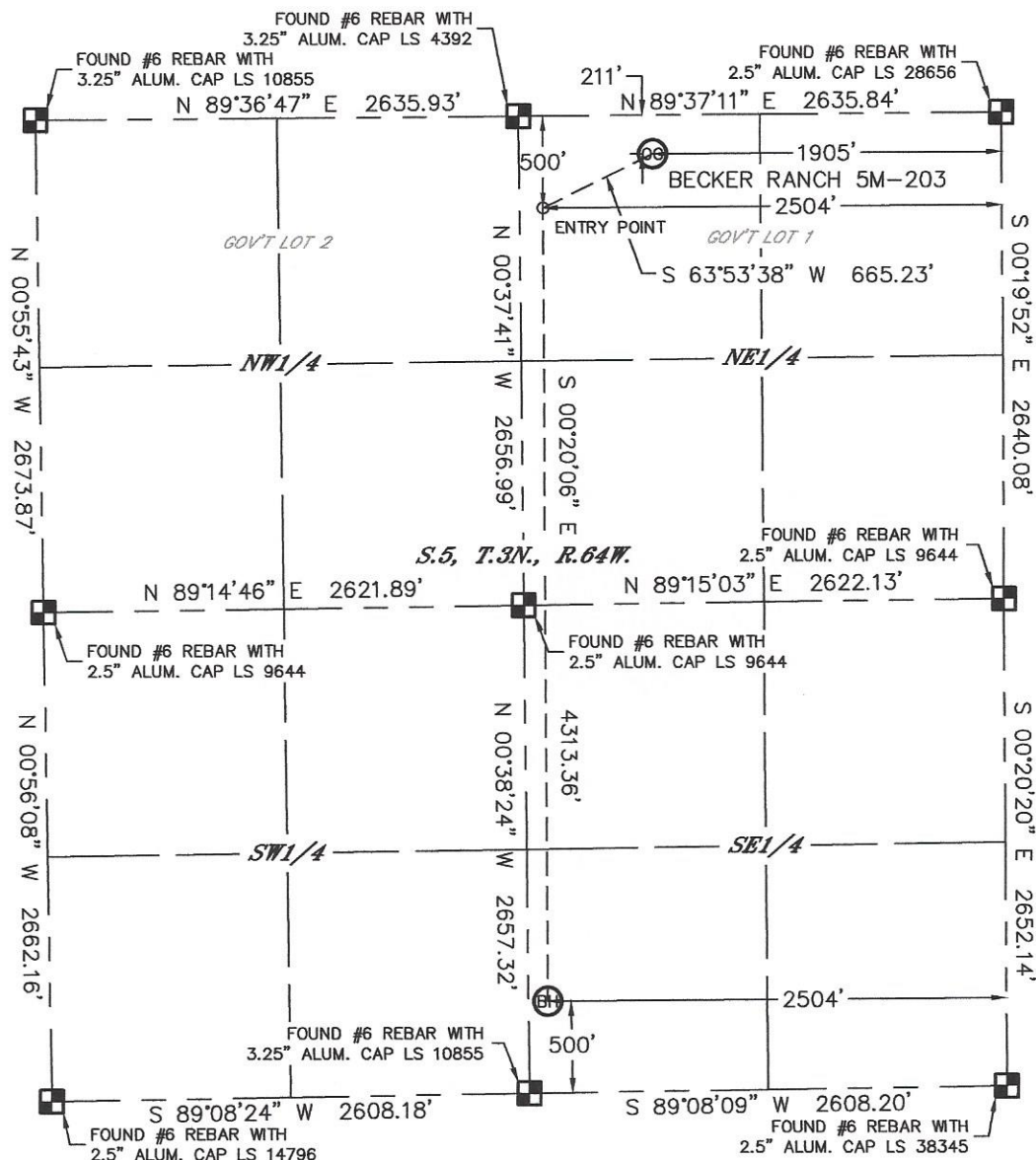
(DISTANCES MEASURED FROM THE CENTER OF THE PROPOSED WELL HEAD OR LIMITS OF THE
PROPOSED PRODUCTION FACILITY, MLVT AREA CLOSEST TO THE REFERENCED CULTURAL ITEM)

Lat40°, Inc. 1635 Foxtrail Drive, Suite 325 Loveland, CO 970-776-3321

WELL LOCATION CERTIFICATE

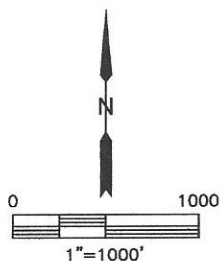
THIS MAP DOES NOT REPRESENT A BOUNDARY SURVEY

SECTION: 5
TOWNSHIP: 3N
RANGE: 64W





In accordance with a request from Mac Neumann with PDC ENERGY Lat40, Inc. has determined the surface location of the BECKER RANCH 5M-203 to be 211' from the NORTH line and 1905' from the EAST line and the bottom hole to be 500' from the SOUTH line and 2504' from the EAST line as measured at right angles from the section lines of Section 5, Township 3 North, Range 64 West of the Sixth Principal Meridian, County of Weld, State of Colorado.

I hereby state that this Well Location Certificate was prepared by me, or under my direct supervision, that the fieldwork was completed on 4/22/2014, for and on behalf of PDC ENERGY. That this is not a Land Survey Plat or an Improvement Survey Plat, and that it is not to be relied upon for establishment of fence, building, or other future improvement lines.



NOTE:

- 1) Bearings shown are Grid Bearings of the Colorado State Plane Coordinate System, North Zone, North American Datum 1983/2007. The lineal dimensions as contained herein are based upon the "U.S. Survey Foot."
- 2) Ground elevations are based on an observed GPS elevation (NAVD 1988 DATUM).
- 3) IMPROVEMENTS: See LOCATION DRAWING for all visible improvements within 500' of disturbed area.
- 4) SURFACE USE: RANGELAND
- 5) INSTRUMENT OPERATOR: ADAM KELLY
- 6) NEAREST CULTURAL ITEMS:
- BUILDING: 840' N
BUILDING UNIT: 1611' NW
HIGH OCCUPANCY BUILDING UNIT: 5280'+
DESIGNATED OUTSIDE ACTIVITY AREA: 5280'+
PUBLIC ROAD: 1898' E (CR 53)
ABOVE GROUND UTILITY: 1075' NE
RAILROAD: 5280'+
PROPERTY LINE: 211' N
- LEGEND
-  = ALIQUOT MONUMENT
-  = CALCULATED POSITION

SURFACE LOCATION

LAT: 40.26118N
LONG: 104.57219W
PDOP: 3.2
ELEV: 4782'
1/4.1/4: NWNE



BOTTOM HOLE

LAT: 40.24856°N
LONG: 104.57441°W

ENTRY POINT

LAT: 40.26039°N
LONG: 104.57434°W

LEGEND

-  = ALIQUOT MONUMENT AS DESCRIBED
 = CALCULATED POSITION

Brian T. Brinkman—On behalf of Lat40°, Inc.
Colorado Licensed Professional Land Surveyor No. 38175
DATE: 4/25/2017
PROJECT#: 2017-001

DATE: 4/25/2014
PROJECT#: 2013107

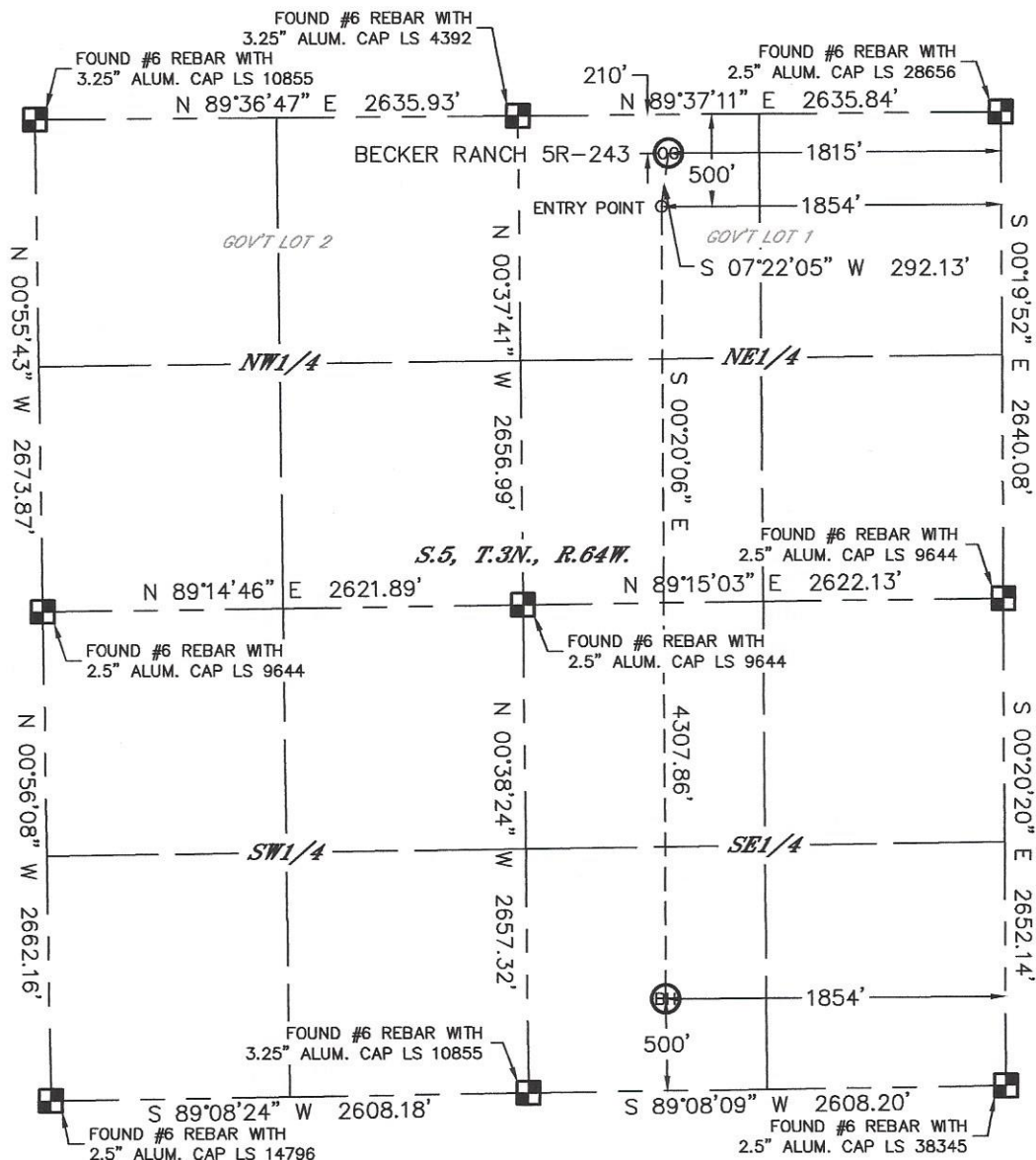


Lat40°, Inc. 1635 Foxtrail Drive, Suite 325 Loveland, CO 970-776-3321

WELL LOCATION CERTIFICATE

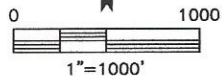
THIS MAP DOES NOT REPRESENT A BOUNDARY SURVEY

SECTION: 5
TOWNSHIP: 3N
RANGE: 64W



In accordance with a request from Mac Neumann with PDC ENERGY Lat40°, Inc. has determined the surface location of the BECKER RANCH 5R-243 to be 210' from the NORTH line and 1815' from the EAST line and the bottom hole to be 500' from the SOUTH line and 1854' from the EAST line as measured at right angles from the section lines of Section 5, Township 3 North, Range 64 West of the Sixth Principal Meridian, County of Weld, State of Colorado.

I hereby state that this Well Location Certificate was prepared by me, or under my direct supervision, that the fieldwork was completed on 4/22/2014, for and on behalf of PDC ENERGY. That this is not a Land Survey Plat or an Improvement Survey Plat, and that it is not to be relied upon for establishment of fence, building, or other future improvement lines.



NOTE:

- 1) Bearings shown are Grid Bearings of the Colorado State Plane Coordinate System, North Zone, North American Datum 1983/2007. The lined dimensions as contained herein are based upon the "U.S. Survey Foot."
- 2) Ground elevations are based on an observed GPS elevation (NAVD 1988 DATUM).
- 3) IMPROVEMENTS: See LOCATION DRAWING for all visible improvements within 500' of disturbed area.
- 4) SURFACE USE: RANGELAND
- 5) INSTRUMENT OPERATOR: ADAM KELLY
- 6) NEAREST CULTURAL ITEMS:
BUILDING: 841' N
BUILDING UNIT: 1699' NW
HIGH OCCUPANCY BUILDING UNIT: 5280'+
DESIGNATED OUTSIDE ACTIVITY AREA: 5280'+
PUBLIC ROAD: 1808' E (CR 53)
ABOVE GROUND UTILITY: 1028' NE
RAILROAD: 5280'+
PROPERTY LINE: 210' N

SURFACE LOCATION

LAT: 40.26118°N
LONG: 104.57187°W
PDOP: 3.8
ELEV: 4781'
1/4,1/4: NWNE

BOTTOM HOLE

LAT: 40.24856°N
LONG: 104.57208°W

ENTRY POINT

LAT: 40.26039°N
LONG: 104.57201°W

LEGEND

- = ALIQUOT MONUMENT AS DESCRIBED
○ = CALCULATED POSITION

Brian T. Brinkman—On behalf of Lat40°, Inc.
Colorado Licensed Professional
Land Surveyor No. 38175

DATE: 4/25/2014
PROJECT#: 2013107

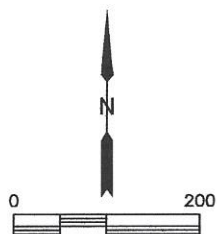
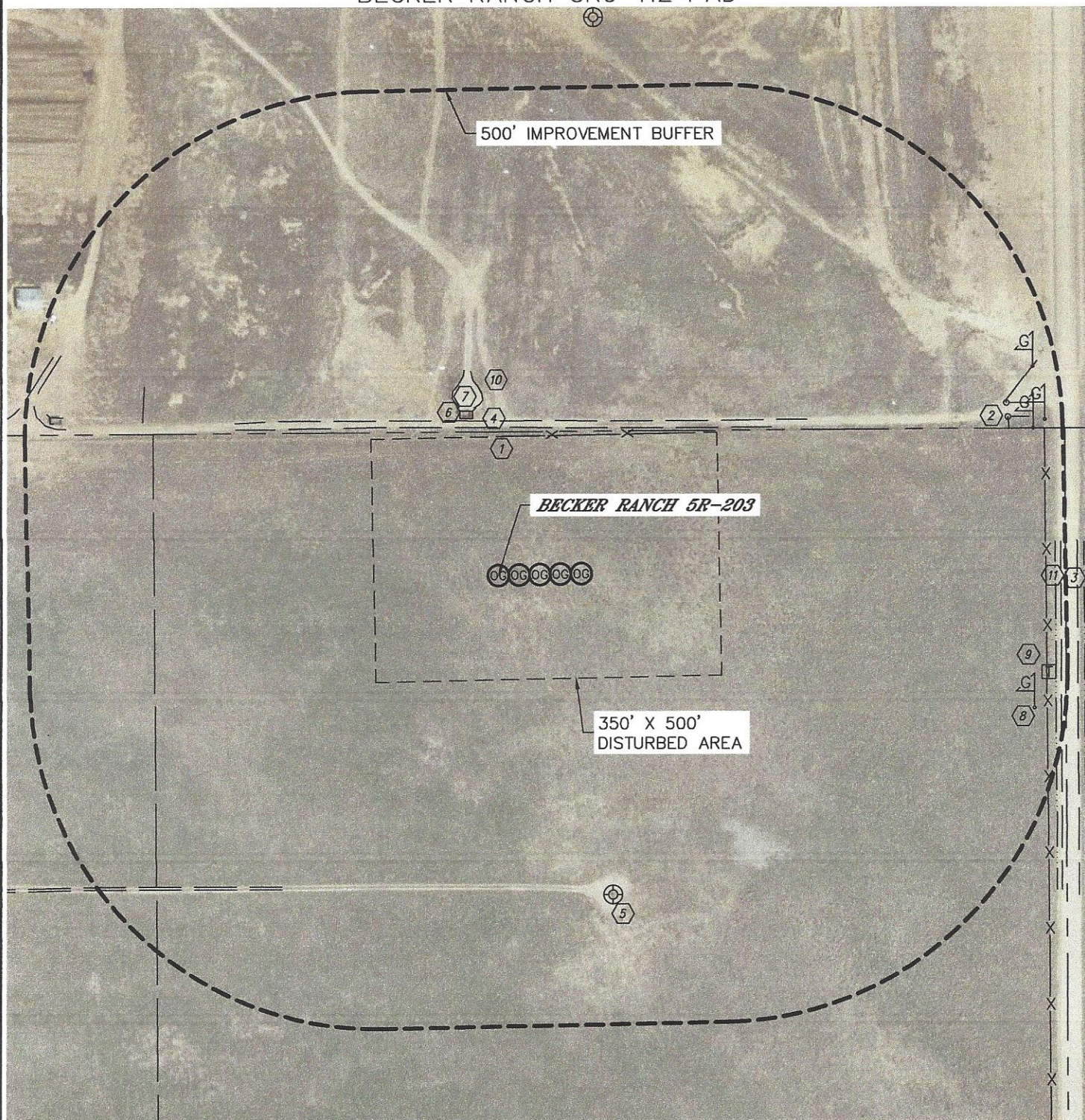


Lat40°, Inc. 1635 Foxtrail Drive, Suite 325 Loveland, CO 970-776-3321

LOCATION DRAWING

BECKER RANCH 5RU-HZ PAD

SECTION: 5
TOWNSHIP: 3N
RANGE: 64W





Lat40°, Inc. 1635 Foxtrail Drive, Suite 325 Loveland, CO 970-776-3321

LOCATION DRAWING

BECKER RANCH 5RU-HZ PAD

SECTION: 5
TOWNSHIP: 3N
RANGE: 64W

IMPROVEMENTS:

(MEASURED FROM THE PROPOSED BECKER RANCH 5R-203 WELL LOCATION)

- ① NO EXISTING BUILDING UNITS WITHIN IMPROVEMENT BUFFER
- ② NO EXISTING BUILDINGS WITHIN IMPROVEMENT BUFFER
- ③ FENCE 200' N, 559' NW, 768' NE, 791' E
- ④ GATE 771' NE
- ⑤ COUNTY ROAD 53 813' E
- ⑥ ROAD 214' N, 448' S, 715' NW
- ⑦ EX. WELL HEAD 489' SE
- ⑧ EDGE OF CONCRETE 229' & 679' NW
- ⑨ CONCRETE WALL 239' & 669' NW
- ⑩ GAS MARKER 799' SE, 801', 821' & 829' NE
- ⑪ TELEPHONE PEDESTAL 808' SE
- ⑫ DIRT RAMP 244' NW
- ⑬ BARROW DITCH 805' E

NEAREST CULTURAL ITEMS:

BUILDING: 1199' NW, BUILDING UNIT: ±1729' NE, HIGH OCCUPANCY BUILDING UNIT: 5280'+,
DESIGNATED OUTSIDE ACTIVITY AREA: 5280'+, PUBLIC ROAD: 693' E (CR 53),
ABOVE GROUND UTILITY: 1022' NW, RAILROAD: 5280'+, PROPERTY LINE: 205' N
(DISTANCES MEASURED FROM THE CENTER OF THE PROPOSED WELL HEAD OR LIMITS OF THE
PROPOSED PRODUCTION FACILITY, MLVT AREA CLOSEST TO THE REFERENCED CULTURAL ITEM)

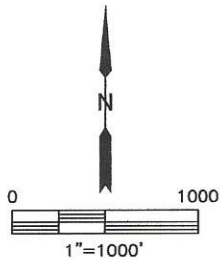
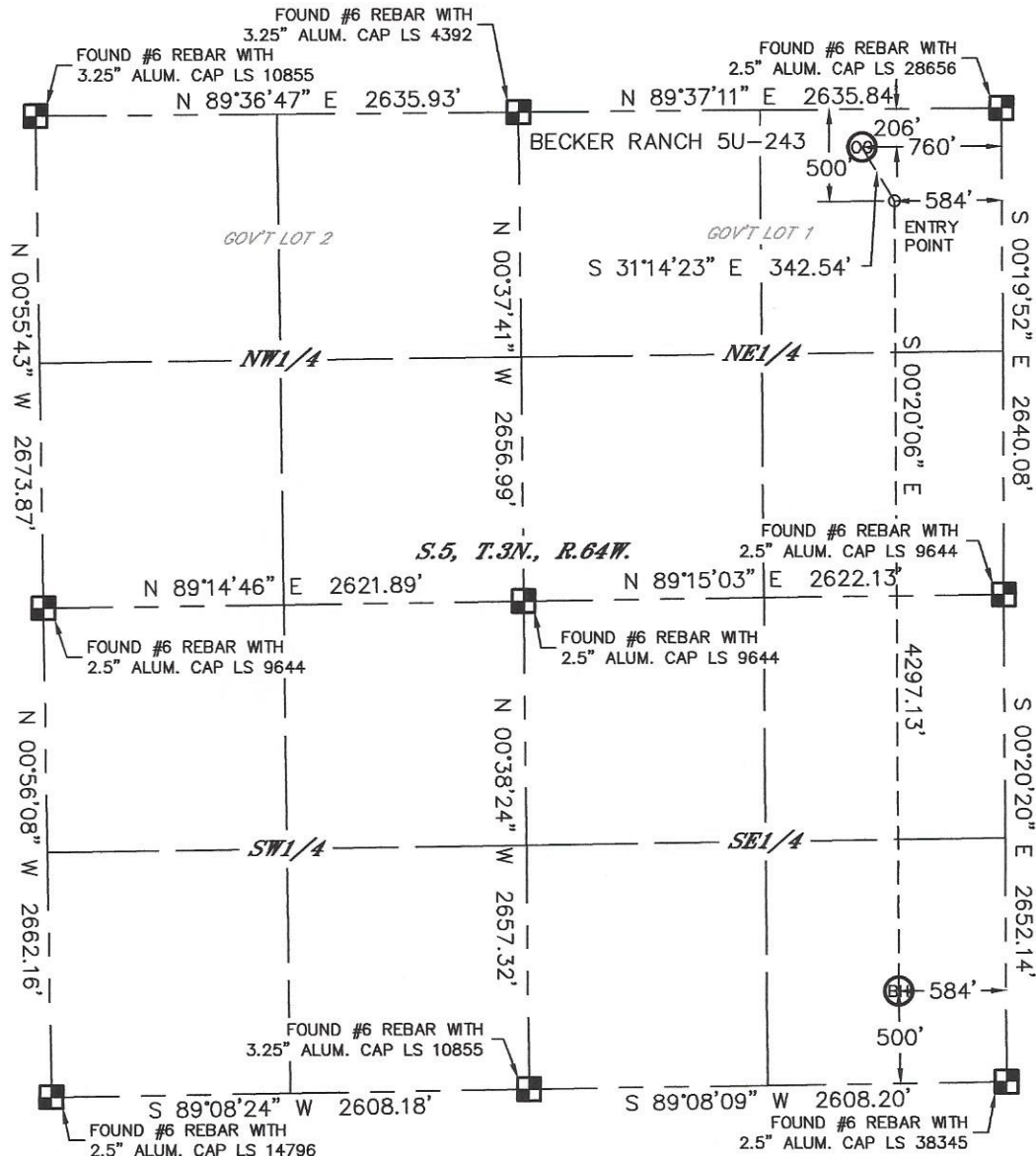


Lat40°, Inc. 1635 Foxtrail Drive, Suite 325 Loveland, CO 970-776-3321

WELL LOCATION CERTIFICATE

THIS MAP DOES NOT REPRESENT A BOUNDARY SURVEY

SECTION: 5
TOWNSHIP: 3N
RANGE: 64W



In accordance with a request from Mac Neumann with PDC ENERGY Lat40°, Inc. has determined the surface location of the BECKER RANCH 5U-243 to be 206' from the NORTH line and 760' from the EAST line and the bottom hole to be 500' from the SOUTH line and 584' from the EAST line as measured at right angles from the section lines of Section 5, Township 3 North, Range 64 West of the Sixth Principal Meridian, County of Weld, State of Colorado.

I hereby state that this Well Location Certificate was prepared by me, or under my direct supervision, that the fieldwork was completed on 4/22/2014, for and on behalf of PDC ENERGY. That this is not a Land Survey Plat or an Improvement Survey Plat, and that it is not to be relied upon for establishment of fence, building, or other future improvement lines.

NOTE:

- 1) Bearings shown are Grid Bearings of the Colorado State Plane Coordinate System, North Zone, North American Datum 1983/2007. The lineal dimensions as contained herein are based upon the "U.S. Survey Foot."
- 2) Ground elevations are based on an observed GPS elevation (NAVD 1988 DATUM).
- 3) IMPROVEMENTS: See LOCATION DRAWING for all visible improvements within 500' of disturbed area.
- 4) SURFACE USE: RANGELAND
- 5) INSTRUMENT OPERATOR: ADAM KELLY
- 6) NEAREST CULTURAL ITEMS:
BUILDING: 1242' NW
BUILDING UNIT: ±1748' NE
HIGH OCCUPANCY BUILDING UNIT: 5280'+
DESIGNATED OUTSIDE ACTIVITY AREA: 5280'+
PUBLIC ROAD: 753' E (CR 53)
ABOVE GROUND UTILITY: 1051' NW
RAILROAD: 5280'+
PROPERTY LINE: 206' N

SURFACE LOCATION

LAT: 40.26118°N
LONG: 104.56809°W
PDOP: 2.0
ELEV: 4784'
1/4,1/4: NENE

BOTTOM HOLE

LAT: 40.24858°N
LONG: 104.56753°W

ENTRY POINT

LAT: 40.26037°N
LONG: 104.56746°W

LEGEND

- = ALIQUOT MONUMENT AS DESCRIBED
○ = CALCULATED POSITION

Brian T. Brinkman—On behalf of Lat40°, Inc.
Colorado Licensed Professional
Land Surveyor No. 38175
DATE: 4/28/2014
PROJECT#: 2013107