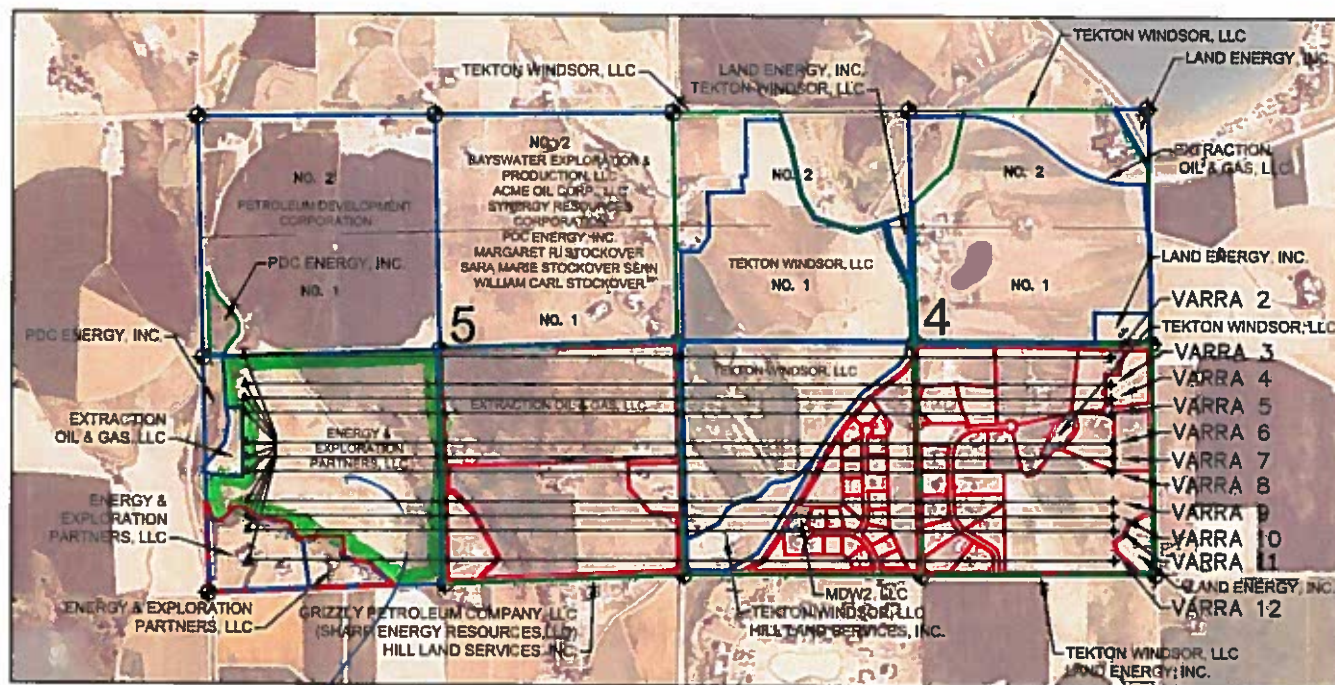


LEASE DRAWING: VARRA 5-I



SHL Lease 118.44 acres

LEGEND

- ⊕ = EXISTING MONUMENT
- = PROPOSED WELL
- ◆ = BOTTOM HOLE
- ◆ = EXISTING WELL
- ▲ = LANDING POINT
- = HILL LAND SERVICE, INC.
- = LEASE LINE, AS LABELED

NOTES:

VARRA #2 TO BE AT 1719' FSL, 791' FWL.
 BOTTOM HOLE AT 2417' FSL & 460' FEL.
 VARRA #3 TO BE AT 1693' FSL, 790' FWL.
 BOTTOM HOLE AT 2110' FSL & 460' FEL.
 VARRA #4 TO BE AT 1667' FSL, 790' FWL.
 BOTTOM HOLE AT 1950' FSL & 460' FEL.
 VARRA #5 TO BE AT 1641' FSL, 789' FWL.
 BOTTOM HOLE AT 1790' FSL & 460' FEL.
 VARRA #6 TO BE AT 1615' FSL, 788' FWL.
 BOTTOM HOLE AT 1460' FSL & 460' FEL.
 VARRA #7 TO BE AT 1589' FSL, 788' FWL.
 BOTTOM HOLE AT 1300' FSL & 460' FEL.
 VARRA #8 TO BE AT 1563' FSL, 787' FWL.
 BOTTOM HOLE AT 1140' FSL & 460' FEL.
 VARRA #9 TO BE AT 1537' FSL, 786' FWL.
 BOTTOM HOLE AT 810' FSL & 460' FEL.
 VARRA #10 TO BE AT 1511' FSL, 786' FWL.
 BOTTOM HOLE AT 650' FSL & 460' FEL.
 VARRA #11 TO BE AT 1485' FSL, 785' FWL.
 BOTTOM HOLE AT 490' FSL & 460' FEL.
 VARRA #12 TO BE AT 1459' FSL, 784' FWL.
 BOTTOM HOLE AT 160' FSL & 460' FEL.

PREPARED BY:

PFS

Petroleum Field Services, LLC
 7535 Hilltop Circle
 Denver, CO 80221

EXTRACTION OIL & GAS

FIELD DATE
 03-31-14

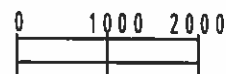
DRAWING DATE
 07-12-14

BY
 KAD

PAO NAME
 VARRA 5-I

SURFACE LOCATION:

NW 1/4 SW 1/4, SEC. 5, T6N, R67W, 6TH P.M.
 WELD COUNTY, COLORADO



SCALE: 1"=2000'