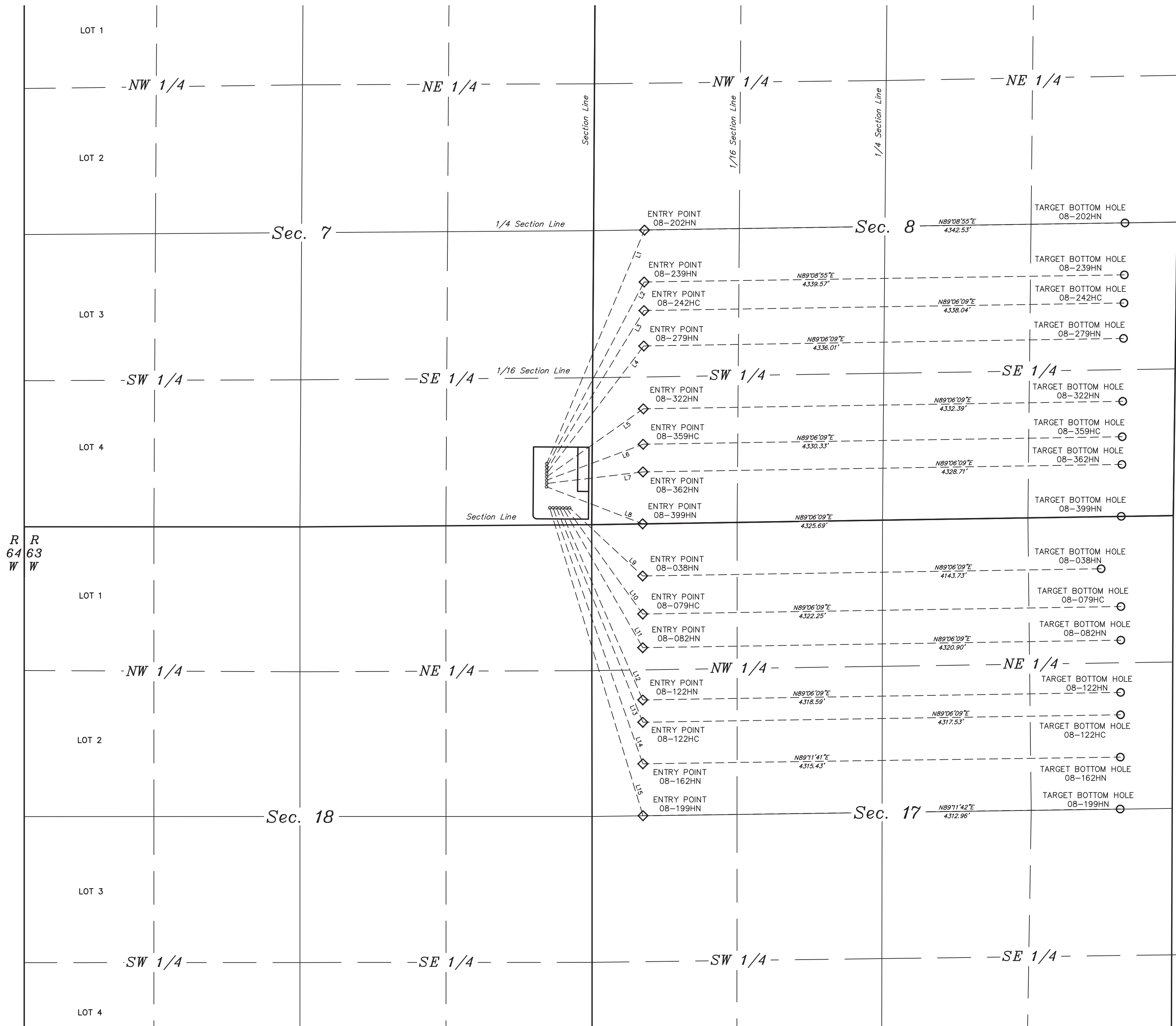




- WELLHEAD
- ◇ Entry Point
- Target
- Bottom Hole



LINE TABLE		
LINE	DIRECTION	LENGTH
L1	N22°43'10"E	2287.40'
L2	N27°47'32"E	1888.62'
L3	N31°21'14"E	1689.62'
L4	N37°16'25"E	1448.58'
L5	N54°52'35"E	1068.43'
L6	N69°34'23"E	930.43'
L7	N83°08'35"E	877.00'
L8	S68°55'13"E	930.13'
L9	S47°02'28"E	900.97'
L10	S35°44'29"E	1180.75'
L11	S29°41'16"E	1453.41'
L12	S23°23'45"E	1890.16'
L13	S21°56'59"E	2088.47'
L14	S19°19'54"E	2450.75'
L15	S16°50'30"E	2906.45'

GREAT WESTERN OIL & GAS COMPANY
McDANIEL FH 17-199HN, 162HN, 122HC, 122HN, 082HN,
079HC, 038HN, 08-399HN, 362HN, 359HC, 322HN,
279HN, 242HC, 239HN & 202HN
SECTION 7, T6N, R63W, 6th P.M.
SE 1/4 SE 1/4



UELS, LLC
Corporate Office * 85 South 200 East
Vernal, UT 84078 * (435) 789-1017

DRAWN BY: J.W.	DATE DRAWN: 06-19-14
SCALE: 1" = 600'	REVISED: 07-07-14
MULTI-WELL PLAN	FIGURE #6