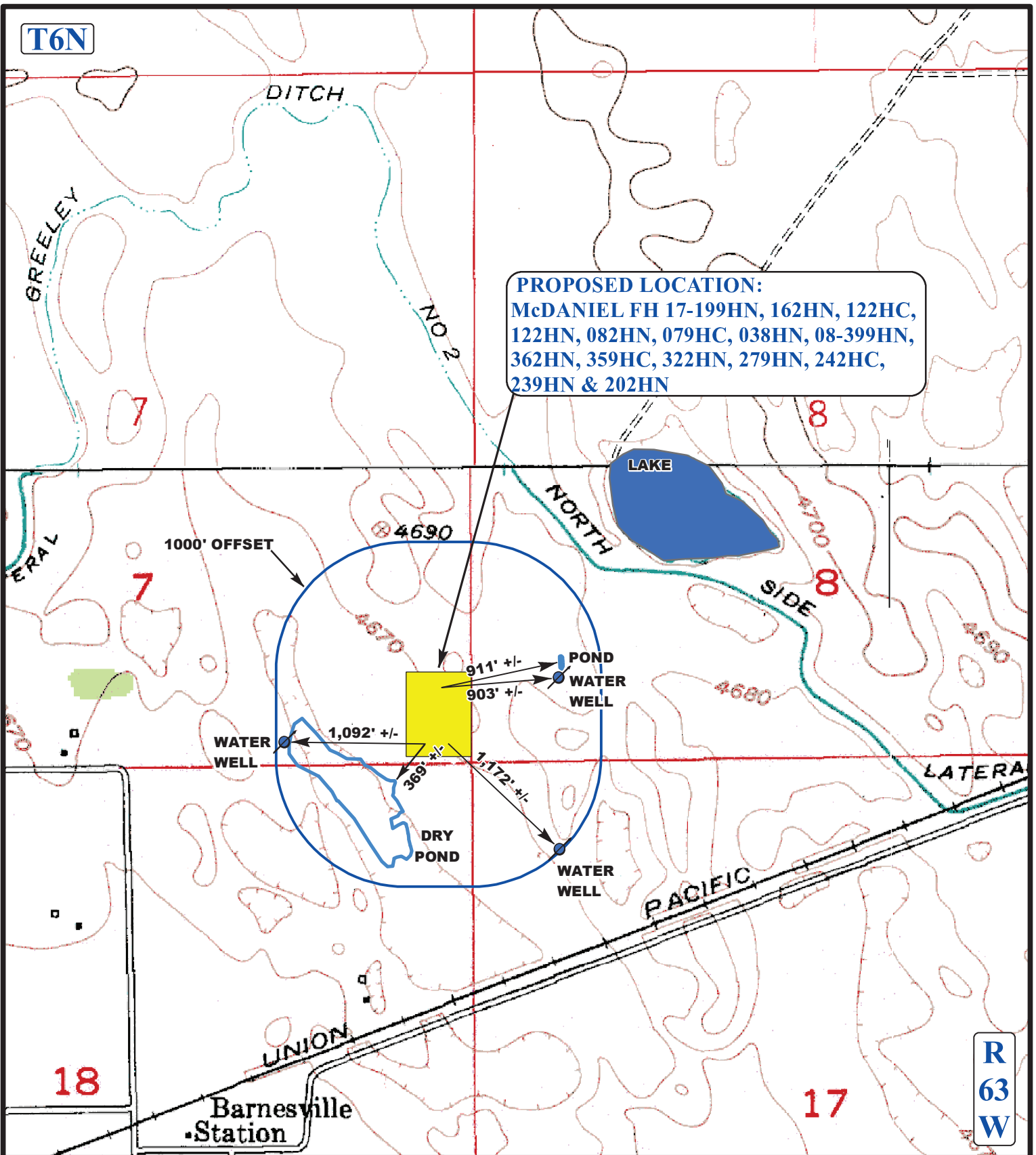


T6N



**PROPOSED LOCATION:**

McDANIEL FH 17-199HN, 162HN, 122HC, 122HN, 082HN, 079HC, 038HN, 08-399HN, 362HN, 359HC, 322HN, 279HN, 242HC, 239HN & 202HN

**LEGEND:**

- EXISTING WATER
- 1000' OFFSET BOUNDRY
- WATER WELLS



**GREAT WESTERN OIL & GAS COMPANY**

McDANIEL FH 17-199HN, 162HN, 122HC, 122HN, 082HN, 079HC, 038HN, 08-399HN, 362HN, 359HC, 322HN, 279HN, 242HC, 239HN & 202HN  
SECTION 7, T6N, R63W, 6th P.M.  
SE 1/4 SE1/4

DRAWN BY: J.L.G.

DATE DRAWN: 06-23-14

SCALE: 1" = 1000'

REVISED: 00-00-00

**HYDROLOGY MAP**

**TOPO W**



**UELS, LLC.**

Corporate Office \* 85 South 200 East  
Vernal, UT 84078 \* (435) 789-1017