

LEGEND:

PROPOSED LOCATION



GREAT WESTERN OIL & GAS COMPANY

McDANIEL FH 17-199HN, 162HN, 122HC, 122HN, 082HN,
 079HC, 038HN, 08-399HN, 362HN, 359HC, 322HN,
 279HN, 242HC, 239HN & 202HN
 SECTION 7, T6N, R63W, 6th P.M.
 SE 1/4 SE1/4



UELS, LLC.
 Corporate Office * 85 South 200 East
 Vernal, UT 84078 * (435) 789-1017

DRAWN BY: J.L.G.

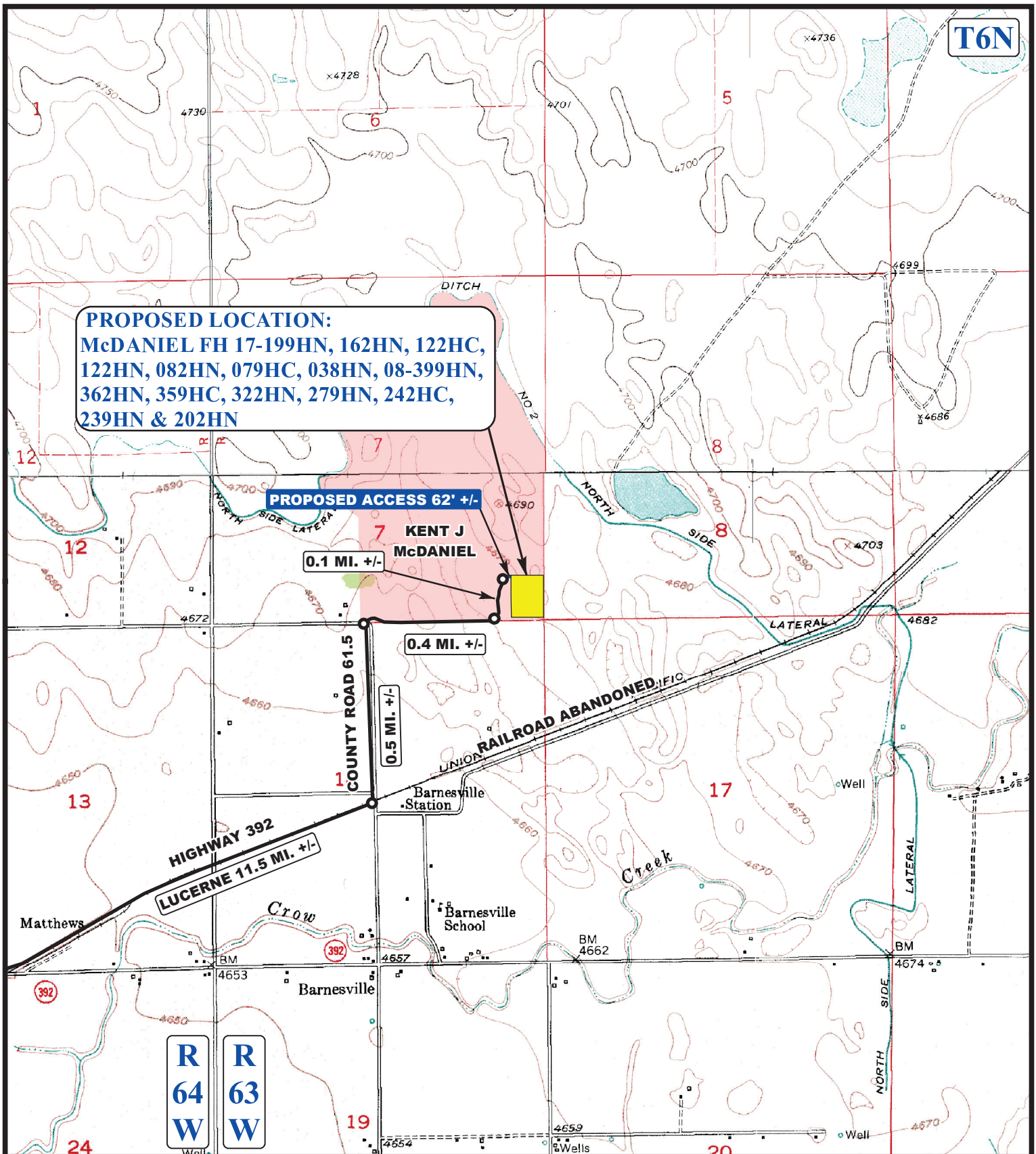
DATE DRAWN: 06-23-14

SCALE: 1:100,000

REVISED: 00-00-00

ACCESS ROAD MAP

TOPO A



LEGEND:

— EXISTING ROADS
 - - - - - PROPOSED ACCESS ROAD



GREAT WESTERN OIL & GAS COMPANY

McDANIEL FH 17-199HN, 162HN, 122HC, 122HN, 082HN,
 079HC, 038HN, 08-399HN, 362HN, 359HC, 322HN,
 279HN, 242HC, 239HN & 202HN
 SECTION 7, T6N, R63W, 6th P.M.
 SE 1/4 SE1/4

DRAWN BY: J.L.G.

DATE DRAWN: 06-23-14

SCALE: 1" = 2000'

REVISED: 00-00-00

ACCESS ROAD MAP

TOPO B



UELS, LLC.
 Corporate Office * 85 South 200 East
 Vernal, UT 84078 * (435) 789-1017