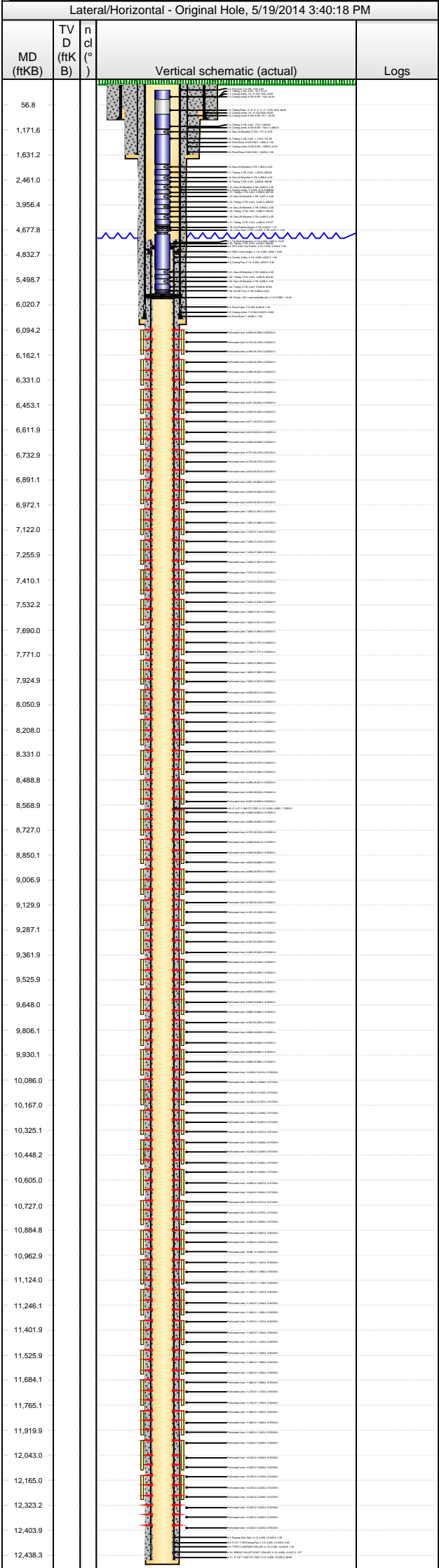




Lease Review All CR
Well Name: RAZOR 271-3413A

API Number	WPC ID	Well Permit Number	Field Name	County	State
051233789900	1CO076903		DJ Horizontal Niobrara	Weld	CO
Well Configuration Type	Orig KB Elv (ft)	Ground Elevation (ft)	Casing Flange Elevation (ft)	Tubing Head Elevation (ft)	Total Depth (ftKB)
Lateral/Horizontal	4,773.30	4,756.50			12,505.0
Original Spud Date	Completion Date	Asset Group	Responsible Engineer	N/S Dist (ft)	N/S Ref
11/12/2013	3/22/2014	Redtail Asset Group	Andrew Fish	2,395.0	FSL
				E/W Dist (ft)	E/W Ref
				758.0	FEL
Lot	Quarter 1	Quarter 2	Quarter 3	Quarter 4	Section
	NE	SE			27
					Section Suffix
					Section Type
					Township
					10 N
					Township N/S Dir
					Range
					58 W
					Range E/W Dir
					Meridian



Wellbore Sections						
Wellbore Name		Start Date	Size (in)	Act Top (ftKB)	Act Btm (ftKB)	
Original Hole		9/13/2013	20	16.8	96.8	
Original Hole		11/12/2013	13 1/2	96.8	1,650.0	
Original Hole		11/14/2013	8 3/4	1,650.0	6,085.0	
Original Hole		11/16/2013	6	6,085.0	12,505.0	
Conductor Pipe, 96.8ftKB						
OD (in)	Wt (lb/ft)	Grade	Top (ftKB)	Btm (ftKB)	Len (ft)	Item Des
16	75.00	J-55	16.8	56.8	40.00	Casing Joints
16	75.00	J-55	56.8	96.8	40.00	Casing Joints
Surface Csg, 1,631.3ftKB						
OD (in)	Wt (lb/ft)	Grade	Top (ftKB)	Btm (ftKB)	Len (ft)	Item Des
9 5/8	36.00	J-55	16.8	16.8	0.00	Landing Joint
9 5/8	36.00	J-55	16.8	16.8	0.00	Casing Joints
9 5/8	36.00	J-55	16.8	61.1	44.34	Casing Joints
9 5/8	36.00	J-55	61.1	104.2	43.08	Casing Joints
9 5/8	36.00	J-55	104.2	1,584.4	1,480.21	Casing Joints
9 5/8	36.00	J-55	1,584.4	1,585.9	1.50	Float Shoe
9 5/8	36.00	J-55	1,585.9	1,629.8	43.91	Casing Joints
9 5/8	36.00	J-55	1,629.8	1,631.3	1.50	Float Shoe
Intermediate Csg, 6,067.6ftKB						
OD (in)	Wt (lb/ft)	Grade	Top (ftKB)	Btm (ftKB)	Len (ft)	Item Des
7	29.00	L-80	16.9	16.9	0.00	Landing Joint
7	29.00	L-80	16.9	21.9	5.00	Pup joint
7	29.00	L-80	21.9	6,020.8	5,998.92	Casing Joints
7	29.00	L-80	6,020.8	6,022.3	1.50	Float Collar
7	29.00	L-80	6,022.3	6,066.1	43.83	Casing Joints
7	29.00	L-80	6,066.1	6,067.6	1.50	Float Shoe
Liner Casing, 12,485.0ftKB						
OD (in)	Wt (lb/ft)	Grade	Top (ftKB)	Btm (ftKB)	Len (ft)	Item Des
4 1/2	11.60	L-80	4,805.3	4,818.8	13.52	Tie Back Extension
4 1/2	11.60	L-80	4,818.8	4,826.1	7.26	ZXP Liner Top Packer
4 1/2	11.60	L-80	4,826.1	4,832.7	6.65	HMC Liner Hanger
4 1/2	11.60	L-80	4,832.7	4,833.7	1.00	Combo Collar
4 1/2	11.60	L-80	4,833.7	4,839.2	5.45	Casing Pup
4 1/2	11.60	L-80	4,839.2	12,429.4	7,590.21	JT 4.5" 11.6# LTC CSG
4 1/2	11.60	L-80	12,429.4	12,430.4	1.00	Rupture Disc Sub
4 1/2	11.60	L-80	12,430.4	12,435.8	5.45	4-1/2" 11.6# Casing Pup
4 1/2	11.60	L-80	12,435.8	12,437.3	1.44	TYPE II LANDING COLLAR
4 1/2	11.60	L-80	12,437.3	12,438.3	1.07	SINGLE VALVE FLOAT COLLAR
4 1/2	11.60	L-80	12,438.3	12,485.0	46.68	JT 4.5" 11.6# LTC CSG
4 1/2			12,485.0	12,485.0		
Cement Stages						
Des	Pump Start Date	Drill Out Date	Top (ftKB)	Btm (ftKB)	Top Meas Meth	
Conductor Cement	9/13/2013		16.8	96.8	Returns to Surface	
Surface Casing Cement	11/13/2013		16.8	1,631.3	Returns to Surface	
Intermediate Casing Cement	11/16/2013		16.8	6,067.7	Returns to Surface	
Liner Cement	11/21/2013		4,805.0	12,485.0	Returns to Surface	
Perforations						
Type of Hole	Date	Top (ftKB)	Btm (ftKB)	Zone		
Perforated Liner	3/22/2014	6,094.0	6,096.0	Niobrara, Original Hole		
Perforated Liner	3/22/2014	6,137.0	6,139.0	Niobrara, Original Hole		
Perforated Liner	3/22/2014	6,160.0	6,162.0	Niobrara, Original Hole		
Perforated Liner	3/22/2014	6,248.0	6,250.0	Niobrara, Original Hole		
Perforated Liner	3/22/2014	6,289.0	6,291.0	Niobrara, Original Hole		
Perforated Liner	3/22/2014	6,331.0	6,333.0	Niobrara, Original Hole		
Perforated Liner	3/22/2014	6,411.0	6,413.0	Niobrara, Original Hole		
Perforated Liner	3/22/2014	6,451.0	6,453.0	Niobrara, Original Hole		
Perforated Liner	3/22/2014	6,490.0	6,492.0	Niobrara, Original Hole		
Perforated Liner	3/22/2014	6,571.0	6,573.0	Niobrara, Original Hole		



Lease Review All CR
Well Name: RAZOR 271-3413A

API Number 051233789900	WPC ID 1CO076903	Well Permit Number	Field Name DJ Horizontal Niobrara	County Weld	State CO
Well Configuration Type Lateral/Horizontal	Orig KB Elv (ft) 4,773.30	Ground Elevation (ft) 4,756.50	Casing Flange Elevation (ft)	Tubing Head Elevation (ft)	Total Depth (ftKB) 12,505.0
Original Spud Date 11/12/2013	Completion Date 3/22/2014	Asset Group Redtail Asset Group	Responsible Engineer Andrew Fish	N/S Dist (ft) 2,395.0	N/S Ref FSL
				E/W Dist (ft) 758.0	E/W Ref FEL
Lot	Quarter 1 NE	Quarter 2 SE	Quarter 3	Quarter 4	Section 27
			Section Suffix	Section Type	Township 10 N
					Range 58 W

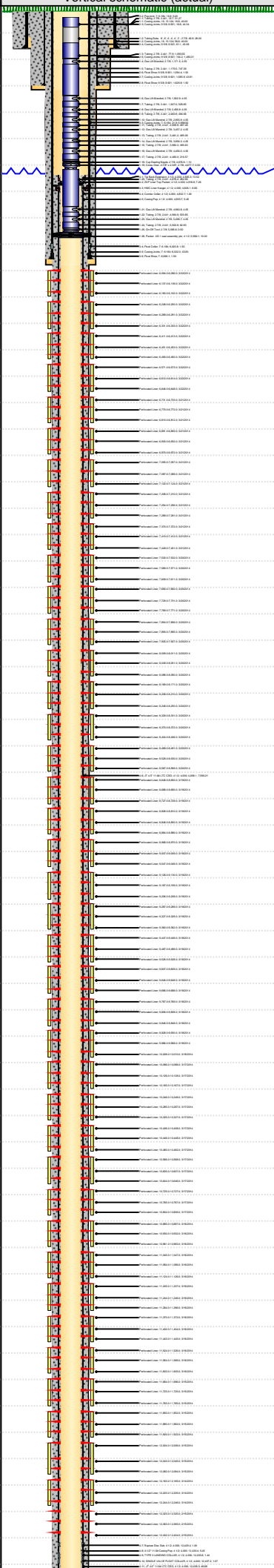
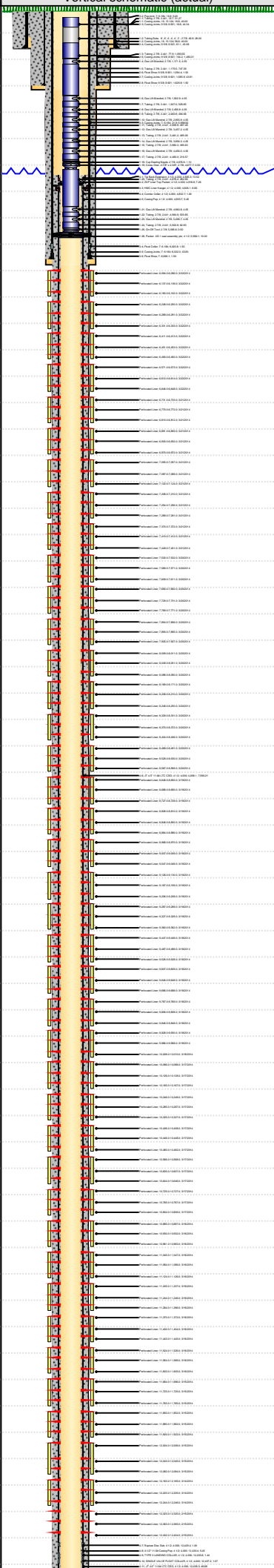
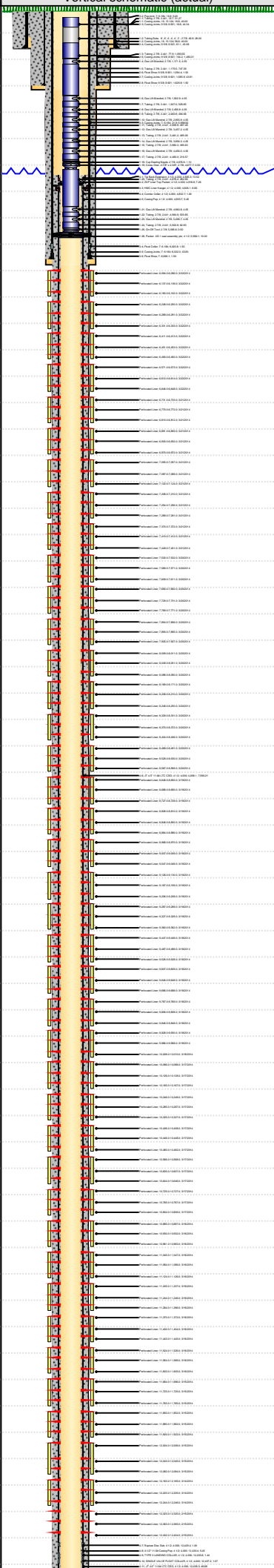
Lateral/Horizontal - Original Hole, 5/19/2014 3:40:19 PM					Perforations				
MD (ftKB)	TV D (ftK B)	n cl (°)			Type of Hole	Date	Top (ftKB)	Btm (ftKB)	Zone
			<div>Vertical schematic (actual)</div> <div>Logs</div>		Perforated Liner	3/22/2014	6,612.0	6,614.0	Niobrara, Original Hole
56.8					Perforated Liner	3/22/2014	6,646.0	6,648.0	Niobrara, Original Hole
1,171.6					Perforated Liner	3/21/2014	6,731.0	6,733.0	Niobrara, Original Hole
1,631.2					Perforated Liner	3/21/2014	6,770.0	6,772.0	Niobrara, Original Hole
2,461.0					Perforated Liner	3/21/2014	6,810.0	6,812.0	Niobrara, Original Hole
3,956.4					Perforated Liner	3/21/2014	6,891.0	6,893.0	Niobrara, Original Hole
4,677.8					Perforated Liner	3/21/2014	6,930.0	6,932.0	Niobrara, Original Hole
4,832.7					Perforated Liner	3/21/2014	6,970.0	6,972.0	Niobrara, Original Hole
5,498.7					Perforated Liner	3/21/2014	7,055.0	7,057.0	Niobrara, Original Hole
6,020.7					Perforated Liner	3/21/2014	7,087.0	7,089.0	Niobrara, Original Hole
6,094.2					Perforated Liner	3/21/2014	7,122.0	7,124.0	Niobrara, Original Hole
6,162.1					Perforated Liner	3/21/2014	7,208.0	7,210.0	Niobrara, Original Hole
6,331.0					Perforated Liner	3/21/2014	7,254.0	7,256.0	Niobrara, Original Hole
6,453.1					Perforated Liner	3/21/2014	7,289.0	7,291.0	Niobrara, Original Hole
6,611.9					Perforated Liner	3/21/2014	7,370.0	7,372.0	Niobrara, Original Hole
6,732.9					Perforated Liner	3/21/2014	7,410.0	7,412.0	Niobrara, Original Hole
6,891.1					Perforated Liner	3/21/2014	7,449.0	7,451.0	Niobrara, Original Hole
6,972.1					Perforated Liner	3/21/2014	7,530.0	7,532.0	Niobrara, Original Hole
7,122.0					Perforated Liner	3/21/2014	7,569.0	7,571.0	Niobrara, Original Hole
7,255.9					Perforated Liner	3/21/2014	7,609.0	7,611.0	Niobrara, Original Hole
7,410.1					Perforated Liner	3/21/2014	7,690.0	7,692.0	Niobrara, Original Hole
7,532.2					Perforated Liner	3/21/2014	7,729.0	7,731.0	Niobrara, Original Hole
7,690.0					Perforated Liner	3/21/2014	7,769.0	7,771.0	Niobrara, Original Hole
7,771.0					Perforated Liner	3/21/2014	7,854.0	7,856.0	Niobrara, Original Hole
7,924.9					Perforated Liner	3/21/2014	7,893.0	7,895.0	Niobrara, Original Hole
8,050.9					Perforated Liner	3/21/2014	7,925.0	7,927.0	Niobrara, Original Hole
8,208.0					Perforated Liner	3/21/2014	8,009.0	8,011.0	Niobrara, Original Hole
8,331.0					Perforated Liner	3/21/2014	8,049.0	8,051.0	Niobrara, Original Hole
8,488.8					Perforated Liner	3/21/2014	8,088.0	8,090.0	Niobrara, Original Hole
8,568.9					Perforated Liner	3/21/2014	8,169.0	8,171.0	Niobrara, Original Hole
8,727.0					Perforated Liner	3/21/2014	8,208.0	8,210.0	Niobrara, Original Hole
8,850.1					Perforated Liner	3/21/2014	8,248.0	8,250.0	Niobrara, Original Hole
9,006.9					Perforated Liner	3/21/2014	8,329.0	8,331.0	Niobrara, Original Hole
9,129.9					Perforated Liner	3/21/2014	8,370.0	8,372.0	Niobrara, Original Hole
9,287.1					Perforated Liner	3/21/2014	8,404.0	8,406.0	Niobrara, Original Hole
9,361.9					Perforated Liner	3/21/2014	8,489.0	8,491.0	Niobrara, Original Hole
9,525.9					Perforated Liner	3/21/2014	8,528.0	8,530.0	Niobrara, Original Hole
9,648.0					Perforated Liner	3/21/2014	8,567.0	8,569.0	Niobrara, Original Hole
9,806.1					Perforated Liner	3/21/2014	8,648.0	8,650.0	Niobrara, Original Hole
9,930.1									
10,086.0									
10,167.0									
10,325.1									
10,448.2									
10,605.0									
10,727.0									
10,884.8									
10,962.9									
11,124.0									
11,246.1									
11,401.9									
11,525.9									
11,684.1									
11,785.1									
11,919.9									
12,043.0									
12,165.0									
12,323.2									
12,403.9									
12,438.3									

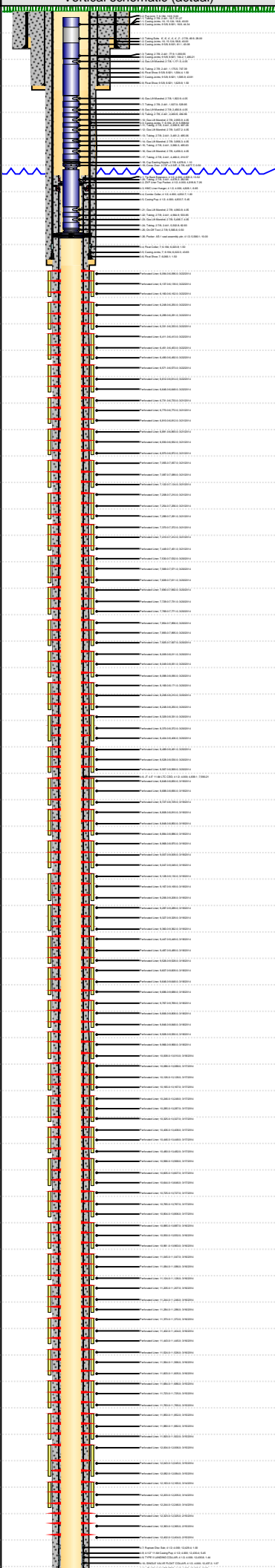


Lease Review All CR
Well Name: RAZOR 271-3413A

API Number	WPC ID	Well Permit Number	Field Name	County	State
051233789900	1CO076903		DJ Horizontal Niobrara	Weld	CO
Well Configuration Type	Orig KB Elv (ft)	Ground Elevation (ft)	Casing Flange Elevation (ft)	Tubing Head Elevation (ft)	Total Depth (ftKB)
Lateral/Horizontal	4,773.30	4,756.50			12,505.0
Original Spud Date	Completion Date	Asset Group	Responsible Engineer	N/S Dist (ft)	N/S Ref
11/12/2013	3/22/2014	Redtail Asset Group	Andrew Fish	2,395.0	FSL
Lot	Quarter 1	Quarter 2	Quarter 3	Quarter 4	Section
	NE	SE			27
Section Suffix	Section Type	Township	Township N/S Dir	Range	Range E/W Dir
		10	N	58	W
Meridian					

Lateral/Horizontal - Original Hole, 5/19/2014 3:40:20 PM					Perforations				
MD (ftKB)	TV D (ftKB)	n cl (°)	Vertical schematic (actual)	Logs	Type of Hole	Date	Top (ftKB)	Btm (ftKB)	Zone
56.8					Perforated Liner	3/19/2014	8,688.0	8,690.0	Niobrara, Original Hole
1,171.6					Perforated Liner	3/19/2014	8,727.0	8,729.0	Niobrara, Original Hole
1,631.2					Perforated Liner	3/19/2014	8,808.0	8,810.0	Niobrara, Original Hole
2,461.0					Perforated Liner	3/19/2014	8,848.0	8,850.0	Niobrara, Original Hole
3,956.4					Perforated Liner	3/19/2014	8,884.0	8,886.0	Niobrara, Original Hole
4,677.8					Perforated Liner	3/19/2014	8,968.0	8,970.0	Niobrara, Original Hole
4,832.7					Perforated Liner	3/19/2014	9,007.0	9,009.0	Niobrara, Original Hole
5,498.7					Perforated Liner	3/19/2014	9,047.0	9,049.0	Niobrara, Original Hole
6,020.7					Perforated Liner	3/19/2014	9,128.0	9,130.0	Niobrara, Original Hole
6,094.2					Perforated Liner	3/19/2014	9,167.0	9,169.0	Niobrara, Original Hole
6,162.1					Perforated Liner	3/19/2014	9,206.0	9,208.0	Niobrara, Original Hole
6,331.0					Perforated Liner	3/19/2014	9,287.0	9,289.0	Niobrara, Original Hole
6,453.1					Perforated Liner	3/19/2014	9,327.0	9,329.0	Niobrara, Original Hole
6,611.9					Perforated Liner	3/19/2014	9,360.0	9,362.0	Niobrara, Original Hole
6,732.9					Perforated Liner	3/19/2014	9,447.0	9,449.0	Niobrara, Original Hole
6,891.1					Perforated Liner	3/19/2014	9,487.0	9,489.0	Niobrara, Original Hole
6,972.1					Perforated Liner	3/19/2014	9,526.0	9,528.0	Niobrara, Original Hole
7,122.0					Perforated Liner	3/19/2014	9,607.0	9,609.0	Niobrara, Original Hole
7,255.9					Perforated Liner	3/19/2014	9,646.0	9,648.0	Niobrara, Original Hole
7,410.1					Perforated Liner	3/19/2014	9,686.0	9,688.0	Niobrara, Original Hole
7,532.2					Perforated Liner	3/19/2014	9,767.0	9,769.0	Niobrara, Original Hole
7,690.0					Perforated Liner	3/19/2014	9,806.0	9,808.0	Niobrara, Original Hole
7,771.0					Perforated Liner	3/19/2014	9,846.0	9,848.0	Niobrara, Original Hole
7,924.9					Perforated Liner	3/19/2014	9,928.0	9,930.0	Niobrara, Original Hole
8,050.9					Perforated Liner	3/19/2014	9,966.0	9,968.0	Niobrara, Original Hole
8,208.0					Perforated Liner	3/19/2014	10,008.0	10,010.0	Niobrara, Original Hole
8,331.0					Perforated Liner	3/19/2014	10,086.0	10,088.0	Niobrara, Original Hole
8,488.8					Perforated Liner	3/19/2014	10,126.0	10,128.0	Niobrara, Original Hole
8,568.9					Perforated Liner	3/19/2014	10,165.0	10,167.0	Niobrara, Original Hole
8,727.0					Perforated Liner	3/19/2014	10,246.0	10,248.0	Niobrara, Original Hole
8,850.1					Perforated Liner	3/19/2014	10,285.0	10,287.0	Niobrara, Original Hole
9,006.9					Perforated Liner	3/19/2014	10,325.0	10,327.0	Niobrara, Original Hole
9,129.9					Perforated Liner	3/19/2014	10,406.0	10,408.0	Niobrara, Original Hole
9,287.1					Perforated Liner	3/19/2014	10,446.0	10,448.0	Niobrara, Original Hole
9,361.9					Perforated Liner	3/19/2014	10,480.0	10,482.0	Niobrara, Original Hole
9,525.9					Perforated Liner	3/19/2014	10,566.0	10,568.0	Niobrara, Original Hole
9,648.0					Perforated Liner	3/19/2014	10,605.0	10,607.0	Niobrara, Original Hole
9,806.1					Perforated Liner	3/19/2014	10,644.0	10,646.0	Niobrara, Original Hole
9,930.1					Perforated Liner	3/19/2014	10,725.0	10,727.0	Niobrara, Original Hole
10,086.0					Perforated Liner	3/19/2014			
10,167.0					Perforated Liner	3/19/2014			
10,325.1					Perforated Liner	3/19/2014			
10,448.2					Perforated Liner	3/19/2014			
10,605.0					Perforated Liner	3/19/2014			
10,727.0					Perforated Liner	3/19/2014			
10,884.8					Perforated Liner	3/19/2014			
10,962.9					Perforated Liner	3/19/2014			
11,124.0					Perforated Liner	3/19/2014			
11,246.1					Perforated Liner	3/19/2014			
11,401.9					Perforated Liner	3/19/2014			
11,525.9					Perforated Liner	3/19/2014			
11,684.1					Perforated Liner	3/19/2014			
11,785.1					Perforated Liner	3/19/2014			
11,919.9					Perforated Liner	3/19/2014			
12,043.0					Perforated Liner	3/19/2014			
12,165.0					Perforated Liner	3/19/2014			
12,323.2					Perforated Liner	3/19/2014			
12,403.9					Perforated Liner	3/19/2014			
12,438.3					Perforated Liner	3/19/2014			

Lease Review All CR																																																																																																																																																																																																																																																																																																																																																																																																																																																																																																																																																																																																		
Well Name: RAZOR 271-3413A																																																																																																																																																																																																																																																																																																																																																																																																																																																																																																																																																																																																		
API Number 051233789900			WPC ID 1CO076903			Well Permit Number			Field Name DJ Horizontal Niobrara			County Weld		State CO																																																																																																																																																																																																																																																																																																																																																																																																																																																																																																																																																																																				
Well Configuration Type Lateral/Horizontal			Orig KB Elv (ft) 4,773.30			Ground Elevation (ft) 4,756.50			Casing Flange Elevation (ft)		Tubing Head Elevation (ft)		Total Depth (ftKB) 12,505.0																																																																																																																																																																																																																																																																																																																																																																																																																																																																																																																																																																																					
Original Spud Date 11/12/2013		Completion Date 3/22/2014		Asset Group Redtail Asset Group			Responsible Engineer Andrew Fish			N/S Dist (ft) 2,395.0		N/S Ref FSL		E/W Dist (ft) 758.0	E/W Ref FEL																																																																																																																																																																																																																																																																																																																																																																																																																																																																																																																																																																																			
Lot		Quarter 1 NE	Quarter 2 SE	Quarter 3	Quarter 4	Section 27	Section Suffix	Section Type		Township 10	Township N/S Dir N	Range 58	Range E/W Dir W	Meridian																																																																																																																																																																																																																																																																																																																																																																																																																																																																																																																																																																																				
Lateral/Horizontal - Original Hole, 5/19/2014 3:40:21 PM																																																																																																																																																																																																																																																																																																																																																																																																																																																																																																																																																																																																		
Perforations																																																																																																																																																																																																																																																																																																																																																																																																																																																																																																																																																																																																		
<table><tr><th>MD (ftKB)</th><th>TV D (ftKB)</th><th>n cl (°)</th><th></th><th>Logs</th><th>Type of Hole</th><th>Date</th><th>Top (ftKB)</th><th>Btm (ftKB)</th><th>Zone</th></tr><tr><td>56.8</td><td></td><td></td><td rowspan="30"></td><td></td><td>Perforated Liner</td><td>3/17/2014</td><td>10,765.0</td><td>10,767.0</td><td>Niobrara, Original Hole</td></tr><tr><td>1,171.6</td><td></td><td></td><td>Perforated Liner</td><td>3/17/2014</td><td>10,804.0</td><td>10,806.0</td><td>Niobrara, Original Hole</td></tr><tr><td>1,631.2</td><td></td><td></td><td>Perforated Liner</td><td>3/16/2014</td><td>10,885.0</td><td>10,887.0</td><td>Niobrara, Original Hole</td></tr><tr><td>2,461.0</td><td></td><td></td><td>Perforated Liner</td><td>3/16/2014</td><td>10,930.0</td><td>10,932.0</td><td>Niobrara, Original Hole</td></tr><tr><td>3,956.4</td><td></td><td></td><td>Perforated Liner</td><td>3/16/2014</td><td>10,961.0</td><td>10,963.0</td><td>Niobrara, Original Hole</td></tr><tr><td>4,677.8</td><td></td><td></td><td>Perforated Liner</td><td>3/16/2014</td><td>11,045.0</td><td>11,047.0</td><td>Niobrara, Original Hole</td></tr><tr><td>4,832.7</td><td></td><td></td><td>Perforated Liner</td><td>3/16/2014</td><td>11,084.0</td><td>11,086.0</td><td>Niobrara, Original Hole</td></tr><tr><td>5,498.7</td><td></td><td></td><td>Perforated Liner</td><td>3/16/2014</td><td>11,124.0</td><td>11,126.0</td><td>Niobrara, Original Hole</td></tr><tr><td>6,020.7</td><td></td><td></td><td>Perforated Liner</td><td>3/16/2014</td><td>11,205.0</td><td>11,207.0</td><td>Niobrara, Original Hole</td></tr><tr><td>6,094.2</td><td></td><td></td><td>Perforated Liner</td><td>3/16/2014</td><td>11,244.0</td><td>11,246.0</td><td>Niobrara, Original Hole</td></tr><tr><td>6,162.1</td><td></td><td></td><td>Perforated Liner</td><td>3/16/2014</td><td>11,284.0</td><td>11,286.0</td><td>Niobrara, Original Hole</td></tr><tr><td>6,331.0</td><td></td><td></td><td>Perforated Liner</td><td>3/16/2014</td><td>11,370.0</td><td>11,372.0</td><td>Niobrara, Original Hole</td></tr><tr><td>6,453.1</td><td></td><td></td><td>Perforated Liner</td><td>3/16/2014</td><td>11,402.0</td><td>11,404.0</td><td>Niobrara, Original Hole</td></tr><tr><td>6,611.9</td><td></td><td></td><td>Perforated Liner</td><td>3/16/2014</td><td>11,443.0</td><td>11,445.0</td><td>Niobrara, Original Hole</td></tr><tr><td>6,732.9</td><td></td><td></td><td>Perforated Liner</td><td>3/16/2014</td><td>11,524.0</td><td>11,526.0</td><td>Niobrara, Original Hole</td></tr><tr><td>6,891.1</td><td></td><td></td><td>Perforated Liner</td><td>3/16/2014</td><td>11,564.0</td><td>11,566.0</td><td>Niobrara, Original Hole</td></tr><tr><td>6,972.1</td><td></td><td></td><td>Perforated Liner</td><td>3/16/2014</td><td>11,603.0</td><td>11,605.0</td><td>Niobrara, Original Hole</td></tr><tr><td>7,122.0</td><td></td><td></td><td>Perforated Liner</td><td>3/15/2014</td><td>11,684.0</td><td>11,686.0</td><td>Niobrara, Original Hole</td></tr><tr><td>7,255.9</td><td></td><td></td><td>Perforated Liner</td><td>3/15/2014</td><td>11,723.0</td><td>11,725.0</td><td>Niobrara, Original Hole</td></tr><tr><td>7,410.1</td><td></td><td></td><td>Perforated Liner</td><td>3/15/2014</td><td>11,763.0</td><td>11,765.0</td><td>Niobrara, Original Hole</td></tr><tr><td>7,532.2</td><td></td><td></td><td>Perforated Liner</td><td>3/15/2014</td><td>11,850.0</td><td>11,852.0</td><td>Niobrara, Original Hole</td></tr><tr><td>7,690.0</td><td></td><td></td><td>Perforated Liner</td><td>3/15/2014</td><td>11,880.0</td><td>11,882.0</td><td>Niobrara, Original Hole</td></tr><tr><td>7,771.0</td><td></td><td></td><td>Perforated Liner</td><td>3/15/2014</td><td>11,920.0</td><td>11,922.0</td><td>Niobrara, Original Hole</td></tr><tr><td>7,924.9</td><td></td><td></td><td>Perforated Liner</td><td>3/15/2014</td><td>12,004.0</td><td>12,006.0</td><td>Niobrara, Original Hole</td></tr><tr><td>8,050.9</td><td></td><td></td><td>Perforated Liner</td><td>3/15/2014</td><td>12,043.0</td><td>12,045.0</td><td>Niobrara, Original Hole</td></tr><tr><td>8,208.0</td><td></td><td></td><td>Perforated Liner</td><td>3/15/2014</td><td>12,082.0</td><td>12,084.0</td><td>Niobrara, Original Hole</td></tr><tr><td>8,331.0</td><td></td><td></td><td>Perforated Liner</td><td>3/14/2014</td><td>12,163.0</td><td>12,165.0</td><td>Niobrara, Original Hole</td></tr><tr><td>8,488.8</td><td></td><td></td><td>Perforated Liner</td><td>3/14/2014</td><td>12,203.0</td><td>12,205.0</td><td>Niobrara, Original Hole</td></tr><tr><td>8,568.9</td><td></td><td></td><td>Perforated Liner</td><td>3/14/2014</td><td>12,244.0</td><td>12,246.0</td><td>Niobrara, Original Hole</td></tr><tr><td>8,727.0</td><td></td><td></td><td>Perforated Liner</td><td>2/15/2014</td><td>12,323.0</td><td>12,325.0</td><td>Niobrara, Original Hole</td></tr><tr><td>8,850.1</td><td></td><td></td><td>Perforated Liner</td><td>2/15/2014</td><td>12,363.0</td><td>12,365.0</td><td>Niobrara, Original Hole</td></tr><tr><td>9,006.9</td><td></td><td></td><td>Perforated Liner</td><td>2/15/2014</td><td>12,402.0</td><td>12,404.0</td><td>Niobrara, Original Hole</td></tr><tr><td>9,129.9</td><td></td><td></td><td></td><td colspan="6">Stim/Treat Stages</td></tr><tr><td>9,287.1</td><td></td><td></td><td></td><td>Stage Type</td><td>Start Date</td><td>Top (ftKB)</td><td>Btm (ftKB)</td><td colspan="2">Stim/Treat Fluid</td><td>Vol Clean Pump (bbl)</td></tr><tr><td>9,361.9</td><td></td><td></td><td></td><td>Frac</td><td>3/22/2014</td><td>6,094.0</td><td>6,162.0</td><td colspan="2">40/70# 8682, 20/40# 102948, 15%HCl# 24bls, Slick Water</td><td></td></tr><tr><td>9,525.9</td><td></td><td></td><td></td><td>Frac</td><td>3/22/2014</td><td>6,248.0</td><td>6,333.0</td><td colspan="2">40/70# 8707, 20/40# 103975, 15%HCl# 24bls, Slick Water</td><td></td></tr><tr><td>9,648.0</td><td></td><td></td><td></td><td>Frac</td><td>3/22/2014</td><td>6,411.0</td><td>6,492.0</td><td colspan="2">40/70# 8714, 20/40# 102286, 15%HCl# 24bls, Slick Water</td><td></td></tr><tr><td>9,806.1</td><td></td><td></td><td></td><td></td><td></td><td></td><td></td><td colspan="3"></td></tr><tr><td>9,930.1</td><td></td><td></td><td></td><td></td><td></td><td></td><td></td><td colspan="3"></td></tr><tr><td>10,086.0</td><td></td><td></td><td></td><td></td><td></td><td></td><td></td><td colspan="3"></td></tr><tr><td>10,167.0</td><td></td><td></td><td></td><td></td><td></td><td></td><td></td><td colspan="3"></td></tr><tr><td>10,325.1</td><td></td><td></td><td></td><td></td><td></td><td></td><td></td><td colspan="3"></td></tr><tr><td>10,448.2</td><td></td><td></td><td></td><td></td><td></td><td></td><td></td><td colspan="3"></td></tr><tr><td>10,605.0</td><td></td><td></td><td></td><td></td><td></td><td></td><td></td><td colspan="3"></td></tr><tr><td>10,727.0</td><td></td><td></td><td></td><td></td><td></td><td></td><td></td><td colspan="3"></td></tr><tr><td>10,884.8</td><td></td><td></td><td></td><td></td><td></td><td></td><td></td><td colspan="3"></td></tr><tr><td>10,962.9</td><td></td><td></td><td></td><td></td><td></td><td></td><td></td><td colspan="3"></td></tr><tr><td>11,124.0</td><td></td><td></td><td></td><td></td><td></td><td></td><td></td><td colspan="3"></td></tr><tr><td>11,246.1</td><td></td><td></td><td></td><td></td><td></td><td></td><td></td><td colspan="3"></td></tr><tr><td>11,401.9</td><td></td><td></td><td></td><td></td><td></td><td></td><td></td><td colspan="3"></td></tr><tr><td>11,525.9</td><td></td><td></td><td></td><td></td><td></td><td></td><td></td><td colspan="3"></td></tr><tr><td>11,684.1</td><td></td><td></td><td></td><td></td><td></td><td></td><td></td><td colspan="3"></td></tr><tr><td>11,765.1</td><td></td><td></td><td></td><td></td><td></td><td></td><td></td><td colspan="3"></td></tr><tr><td>11,919.9</td><td></td><td></td><td></td><td></td><td></td><td></td><td></td><td colspan="3"></td></tr><tr><td>12,043.0</td><td></td><td></td><td></td><td></td><td></td><td></td><td></td><td colspan="3"></td></tr><tr><td>12,165.0</td><td></td><td></td><td></td><td></td><td></td><td></td><td></td><td colspan="3"></td></tr><tr><td>12,323.2</td><td></td><td></td><td></td><td></td><td></td><td></td><td></td><td colspan="3"></td></tr><tr><td>12,403.9</td><td></td><td></td><td></td><td></td><td></td><td></td><td></td><td colspan="3"></td></tr><tr><td>12,438.3</td><td></td><td></td><td></td><td></td><td></td><td></td><td></td><td colspan="3"></td></tr></table>															MD (ftKB)	TV D (ftKB)	n cl (°)		Logs	Type of Hole	Date	Top (ftKB)	Btm (ftKB)	Zone	56.8					Perforated Liner	3/17/2014	10,765.0	10,767.0	Niobrara, Original Hole	1,171.6			Perforated Liner	3/17/2014	10,804.0	10,806.0	Niobrara, Original Hole	1,631.2			Perforated Liner	3/16/2014	10,885.0	10,887.0	Niobrara, Original Hole	2,461.0			Perforated Liner	3/16/2014	10,930.0	10,932.0	Niobrara, Original Hole	3,956.4			Perforated Liner	3/16/2014	10,961.0	10,963.0	Niobrara, Original Hole	4,677.8			Perforated Liner	3/16/2014	11,045.0	11,047.0	Niobrara, Original Hole	4,832.7			Perforated Liner	3/16/2014	11,084.0	11,086.0	Niobrara, Original Hole	5,498.7			Perforated Liner	3/16/2014	11,124.0	11,126.0	Niobrara, Original Hole	6,020.7			Perforated Liner	3/16/2014	11,205.0	11,207.0	Niobrara, Original Hole	6,094.2			Perforated Liner	3/16/2014	11,244.0	11,246.0	Niobrara, Original Hole	6,162.1			Perforated Liner	3/16/2014	11,284.0	11,286.0	Niobrara, Original Hole	6,331.0			Perforated Liner	3/16/2014	11,370.0	11,372.0	Niobrara, Original Hole	6,453.1			Perforated Liner	3/16/2014	11,402.0	11,404.0	Niobrara, Original Hole	6,611.9			Perforated Liner	3/16/2014	11,443.0	11,445.0	Niobrara, Original Hole	6,732.9			Perforated Liner	3/16/2014	11,524.0	11,526.0	Niobrara, Original Hole	6,891.1			Perforated Liner	3/16/2014	11,564.0	11,566.0	Niobrara, Original Hole	6,972.1			Perforated Liner	3/16/2014	11,603.0	11,605.0	Niobrara, Original Hole	7,122.0			Perforated Liner	3/15/2014	11,684.0	11,686.0	Niobrara, Original Hole	7,255.9			Perforated Liner	3/15/2014	11,723.0	11,725.0	Niobrara, Original Hole	7,410.1			Perforated Liner	3/15/2014	11,763.0	11,765.0	Niobrara, Original Hole	7,532.2			Perforated Liner	3/15/2014	11,850.0	11,852.0	Niobrara, Original Hole	7,690.0			Perforated Liner	3/15/2014	11,880.0	11,882.0	Niobrara, Original Hole	7,771.0			Perforated Liner	3/15/2014	11,920.0	11,922.0	Niobrara, Original Hole	7,924.9			Perforated Liner	3/15/2014	12,004.0	12,006.0	Niobrara, Original Hole	8,050.9			Perforated Liner	3/15/2014	12,043.0	12,045.0	Niobrara, Original Hole	8,208.0			Perforated Liner	3/15/2014	12,082.0	12,084.0	Niobrara, Original Hole	8,331.0			Perforated Liner	3/14/2014	12,163.0	12,165.0	Niobrara, Original Hole	8,488.8			Perforated Liner	3/14/2014	12,203.0	12,205.0	Niobrara, Original Hole	8,568.9			Perforated Liner	3/14/2014	12,244.0	12,246.0	Niobrara, Original Hole	8,727.0			Perforated Liner	2/15/2014	12,323.0	12,325.0	Niobrara, Original Hole	8,850.1			Perforated Liner	2/15/2014	12,363.0	12,365.0	Niobrara, Original Hole	9,006.9			Perforated Liner	2/15/2014	12,402.0	12,404.0	Niobrara, Original Hole	9,129.9				Stim/Treat Stages						9,287.1				Stage Type	Start Date	Top (ftKB)	Btm (ftKB)	Stim/Treat Fluid		Vol Clean Pump (bbl)	9,361.9				Frac	3/22/2014	6,094.0	6,162.0	40/70# 8682, 20/40# 102948, 15%HCl# 24bls, Slick Water			9,525.9				Frac	3/22/2014	6,248.0	6,333.0	40/70# 8707, 20/40# 103975, 15%HCl# 24bls, Slick Water			9,648.0				Frac	3/22/2014	6,411.0	6,492.0	40/70# 8714, 20/40# 102286, 15%HCl# 24bls, Slick Water			9,806.1											9,930.1											10,086.0											10,167.0											10,325.1											10,448.2											10,605.0											10,727.0											10,884.8											10,962.9											11,124.0											11,246.1											11,401.9											11,525.9											11,684.1											11,765.1											11,919.9											12,043.0											12,165.0											12,323.2											12,403.9											12,438.3										
MD (ftKB)	TV D (ftKB)	n cl (°)		Logs	Type of Hole	Date	Top (ftKB)	Btm (ftKB)	Zone																																																																																																																																																																																																																																																																																																																																																																																																																																																																																																																																																																																									
56.8					Perforated Liner	3/17/2014	10,765.0	10,767.0	Niobrara, Original Hole																																																																																																																																																																																																																																																																																																																																																																																																																																																																																																																																																																																									
1,171.6				Perforated Liner	3/17/2014	10,804.0	10,806.0	Niobrara, Original Hole																																																																																																																																																																																																																																																																																																																																																																																																																																																																																																																																																																																										
1,631.2				Perforated Liner	3/16/2014	10,885.0	10,887.0	Niobrara, Original Hole																																																																																																																																																																																																																																																																																																																																																																																																																																																																																																																																																																																										
2,461.0				Perforated Liner	3/16/2014	10,930.0	10,932.0	Niobrara, Original Hole																																																																																																																																																																																																																																																																																																																																																																																																																																																																																																																																																																																										
3,956.4				Perforated Liner	3/16/2014	10,961.0	10,963.0	Niobrara, Original Hole																																																																																																																																																																																																																																																																																																																																																																																																																																																																																																																																																																																										
4,677.8				Perforated Liner	3/16/2014	11,045.0	11,047.0	Niobrara, Original Hole																																																																																																																																																																																																																																																																																																																																																																																																																																																																																																																																																																																										
4,832.7				Perforated Liner	3/16/2014	11,084.0	11,086.0	Niobrara, Original Hole																																																																																																																																																																																																																																																																																																																																																																																																																																																																																																																																																																																										
5,498.7				Perforated Liner	3/16/2014	11,124.0	11,126.0	Niobrara, Original Hole																																																																																																																																																																																																																																																																																																																																																																																																																																																																																																																																																																																										
6,020.7				Perforated Liner	3/16/2014	11,205.0	11,207.0	Niobrara, Original Hole																																																																																																																																																																																																																																																																																																																																																																																																																																																																																																																																																																																										
6,094.2				Perforated Liner	3/16/2014	11,244.0	11,246.0	Niobrara, Original Hole																																																																																																																																																																																																																																																																																																																																																																																																																																																																																																																																																																																										
6,162.1				Perforated Liner	3/16/2014	11,284.0	11,286.0	Niobrara, Original Hole																																																																																																																																																																																																																																																																																																																																																																																																																																																																																																																																																																																										
6,331.0				Perforated Liner	3/16/2014	11,370.0	11,372.0	Niobrara, Original Hole																																																																																																																																																																																																																																																																																																																																																																																																																																																																																																																																																																																										
6,453.1				Perforated Liner	3/16/2014	11,402.0	11,404.0	Niobrara, Original Hole																																																																																																																																																																																																																																																																																																																																																																																																																																																																																																																																																																																										
6,611.9				Perforated Liner	3/16/2014	11,443.0	11,445.0	Niobrara, Original Hole																																																																																																																																																																																																																																																																																																																																																																																																																																																																																																																																																																																										
6,732.9				Perforated Liner	3/16/2014	11,524.0	11,526.0	Niobrara, Original Hole																																																																																																																																																																																																																																																																																																																																																																																																																																																																																																																																																																																										
6,891.1				Perforated Liner	3/16/2014	11,564.0	11,566.0	Niobrara, Original Hole																																																																																																																																																																																																																																																																																																																																																																																																																																																																																																																																																																																										
6,972.1				Perforated Liner	3/16/2014	11,603.0	11,605.0	Niobrara, Original Hole																																																																																																																																																																																																																																																																																																																																																																																																																																																																																																																																																																																										
7,122.0				Perforated Liner	3/15/2014	11,684.0	11,686.0	Niobrara, Original Hole																																																																																																																																																																																																																																																																																																																																																																																																																																																																																																																																																																																										
7,255.9				Perforated Liner	3/15/2014	11,723.0	11,725.0	Niobrara, Original Hole																																																																																																																																																																																																																																																																																																																																																																																																																																																																																																																																																																																										
7,410.1				Perforated Liner	3/15/2014	11,763.0	11,765.0	Niobrara, Original Hole																																																																																																																																																																																																																																																																																																																																																																																																																																																																																																																																																																																										
7,532.2				Perforated Liner	3/15/2014	11,850.0	11,852.0	Niobrara, Original Hole																																																																																																																																																																																																																																																																																																																																																																																																																																																																																																																																																																																										
7,690.0				Perforated Liner	3/15/2014	11,880.0	11,882.0	Niobrara, Original Hole																																																																																																																																																																																																																																																																																																																																																																																																																																																																																																																																																																																										
7,771.0				Perforated Liner	3/15/2014	11,920.0	11,922.0	Niobrara, Original Hole																																																																																																																																																																																																																																																																																																																																																																																																																																																																																																																																																																																										
7,924.9				Perforated Liner	3/15/2014	12,004.0	12,006.0	Niobrara, Original Hole																																																																																																																																																																																																																																																																																																																																																																																																																																																																																																																																																																																										
8,050.9				Perforated Liner	3/15/2014	12,043.0	12,045.0	Niobrara, Original Hole																																																																																																																																																																																																																																																																																																																																																																																																																																																																																																																																																																																										
8,208.0				Perforated Liner	3/15/2014	12,082.0	12,084.0	Niobrara, Original Hole																																																																																																																																																																																																																																																																																																																																																																																																																																																																																																																																																																																										
8,331.0				Perforated Liner	3/14/2014	12,163.0	12,165.0	Niobrara, Original Hole																																																																																																																																																																																																																																																																																																																																																																																																																																																																																																																																																																																										
8,488.8				Perforated Liner	3/14/2014	12,203.0	12,205.0	Niobrara, Original Hole																																																																																																																																																																																																																																																																																																																																																																																																																																																																																																																																																																																										
8,568.9				Perforated Liner	3/14/2014	12,244.0	12,246.0	Niobrara, Original Hole																																																																																																																																																																																																																																																																																																																																																																																																																																																																																																																																																																																										
8,727.0				Perforated Liner	2/15/2014	12,323.0	12,325.0	Niobrara, Original Hole																																																																																																																																																																																																																																																																																																																																																																																																																																																																																																																																																																																										
8,850.1			Perforated Liner	2/15/2014	12,363.0	12,365.0	Niobrara, Original Hole																																																																																																																																																																																																																																																																																																																																																																																																																																																																																																																																																																																											
9,006.9			Perforated Liner	2/15/2014	12,402.0	12,404.0	Niobrara, Original Hole																																																																																																																																																																																																																																																																																																																																																																																																																																																																																																																																																																																											
9,129.9				Stim/Treat Stages																																																																																																																																																																																																																																																																																																																																																																																																																																																																																																																																																																																														
9,287.1				Stage Type	Start Date	Top (ftKB)	Btm (ftKB)	Stim/Treat Fluid		Vol Clean Pump (bbl)																																																																																																																																																																																																																																																																																																																																																																																																																																																																																																																																																																																								
9,361.9				Frac	3/22/2014	6,094.0	6,162.0	40/70# 8682, 20/40# 102948, 15%HCl# 24bls, Slick Water																																																																																																																																																																																																																																																																																																																																																																																																																																																																																																																																																																																										
9,525.9				Frac	3/22/2014	6,248.0	6,333.0	40/70# 8707, 20/40# 103975, 15%HCl# 24bls, Slick Water																																																																																																																																																																																																																																																																																																																																																																																																																																																																																																																																																																																										
9,648.0				Frac	3/22/2014	6,411.0	6,492.0	40/70# 8714, 20/40# 102286, 15%HCl# 24bls, Slick Water																																																																																																																																																																																																																																																																																																																																																																																																																																																																																																																																																																																										
9,806.1																																																																																																																																																																																																																																																																																																																																																																																																																																																																																																																																																																																																		
9,930.1																																																																																																																																																																																																																																																																																																																																																																																																																																																																																																																																																																																																		
10,086.0																																																																																																																																																																																																																																																																																																																																																																																																																																																																																																																																																																																																		
10,167.0																																																																																																																																																																																																																																																																																																																																																																																																																																																																																																																																																																																																		
10,325.1																																																																																																																																																																																																																																																																																																																																																																																																																																																																																																																																																																																																		
10,448.2																																																																																																																																																																																																																																																																																																																																																																																																																																																																																																																																																																																																		
10,605.0																																																																																																																																																																																																																																																																																																																																																																																																																																																																																																																																																																																																		
10,727.0																																																																																																																																																																																																																																																																																																																																																																																																																																																																																																																																																																																																		
10,884.8																																																																																																																																																																																																																																																																																																																																																																																																																																																																																																																																																																																																		
10,962.9																																																																																																																																																																																																																																																																																																																																																																																																																																																																																																																																																																																																		
11,124.0																																																																																																																																																																																																																																																																																																																																																																																																																																																																																																																																																																																																		
11,246.1																																																																																																																																																																																																																																																																																																																																																																																																																																																																																																																																																																																																		
11,401.9																																																																																																																																																																																																																																																																																																																																																																																																																																																																																																																																																																																																		
11,525.9																																																																																																																																																																																																																																																																																																																																																																																																																																																																																																																																																																																																		
11,684.1																																																																																																																																																																																																																																																																																																																																																																																																																																																																																																																																																																																																		
11,765.1																																																																																																																																																																																																																																																																																																																																																																																																																																																																																																																																																																																																		
11,919.9																																																																																																																																																																																																																																																																																																																																																																																																																																																																																																																																																																																																		
12,043.0																																																																																																																																																																																																																																																																																																																																																																																																																																																																																																																																																																																																		
12,165.0																																																																																																																																																																																																																																																																																																																																																																																																																																																																																																																																																																																																		
12,323.2																																																																																																																																																																																																																																																																																																																																																																																																																																																																																																																																																																																																		
12,403.9																																																																																																																																																																																																																																																																																																																																																																																																																																																																																																																																																																																																		
12,438.3																																																																																																																																																																																																																																																																																																																																																																																																																																																																																																																																																																																																		

Lease Review All CR													
Well Name: RAZOR 271-3413A													
API Number		WPC ID		Well Permit Number		Field Name		County		State			
051233789900		1CO076903				DJ Horizontal Niobrara		Weld		CO			
Well Configuration Type		Orig KB Elv (ft)		Ground Elevation (ft)		Casing Flange Elevation (ft)		Tubing Head Elevation (ft)		Total Depth (ftKB)			
Lateral/Horizontal		4,773.30		4,756.50						12,505.0			
Original Spud Date		Completion Date		Asset Group		Responsible Engineer		N/S Dist (ft)		N/S Ref		E/W Dist (ft)	
11/12/2013		3/22/2014		Redtail Asset Group		Andrew Fish		2,395.0		FSL		758.0	
Lot		Quarter 1	Quarter 2	Quarter 3	Quarter 4	Section	Section Suffix	Section Type	Township	Township N/S Dir	Range	Range E/W Dir	Meridian
		NE	SE			27			10	N	58	W	
Lateral/Horizontal - Original Hole, 5/19/2014 3:40:23 PM													
Stim/Treat Stages													
MD (ftKB)	TV D (ftKB B)	n cl (°)	Vertical schematic (actual)				Logs	Stage Type	Start Date	Top (ftKB)	Btm (ftKB)	Stim/Treat Fluid	Vol Clean Pump (bbl)
56.8							Frac	3/21/2014	6,571.0	6,648.0	40/70# 9009, 20/40# 103091, 15%HCl# 24bls, Slick Water		
1,171.6							Frac	3/21/2014	6,731.0	6,812.0	40/70# 9004, 20/40# 99500, Slick Water		
1,631.2							Frac	3/21/2014	6,891.0	6,972.0	40/70# 9087, 20/40# 99500, Slick Water		
2,461.0							Frac	3/21/2014	7,055.0	7,124.0	40/70# 9067, 20/40# 100500, Slick Water		
3,956.4							Frac	3/21/2014	7,208.0	7,291.0	40/70# 9009, 20/40# 100236, Slick Water		
4,677.8							Frac	3/21/2014	7,370.0	7,451.0	40/70# 9003, 20/40# 104097, Slick Water		
4,832.7							Frac	3/20/2014	7,530.0	7,611.0	40/70# 9002, 20/40# 102500, Slick Water		
5,498.7							Frac	3/20/2014	7,690.0	7,771.0	40/70# 9064, 20/40# 100500, Slick Water		
6,020.7							Frac	3/20/2014	7,854.0	7,927.0	40/70# 9006, 20/40# 103514, Slick Water		
6,094.2							Frac	3/20/2014	8,009.0	8,090.0	40/70# 8934, 20/40# 101023, Slick Water		
6,162.1							Frac	3/20/2014	8,169.0	8,250.0	40/70# 8962, 20/40# 100078, Slick Water		
6,331.0							Frac	3/20/2014	8,329.0	8,406.0	40/70# 9000, 20/40# 101200, Slick Water		
6,453.1							Frac	3/19/2014	8,489.0	8,569.0	40/70# 9001, 20/40# 103099, Slick Water		
6,611.9							Frac	3/19/2014	8,648.0	8,729.0	40/70# 9007, 20/40# 100500, Slick Water		
6,732.9							Frac	3/19/2014	8,808.0	8,886.0	40/70# 8901, 20/40# 101599, Slick Water		
6,891.1							Frac	3/19/2014	8,968.0	9,049.0	40/70# 9017, 20/40# 101033, Slick Water		
6,972.1							Frac	3/19/2014	9,128.0	9,208.0	40/70# 9000, 20/40# 103300, Slick Water		
7,122.0							Frac	3/19/2014	9,287.0	9,362.0	40/70# 9607, 20/40# 102393, Slick Water		
7,255.9							Frac	3/18/2014	9,447.0	9,528.0	40/70# 9000, 20/40# 100500, 15%HCl# 24bls, Slick Water		
7,410.1							Frac	3/18/2014	9,607.0	9,688.0	40/70# 9500, 20/40# 102900, 15%HCl# 24bls, Slick Water		
7,532.2							Frac	3/18/2014	9,767.0	9,848.0	40/70# 9015, 20/40# 101735, 15%HCl# 24bls, Slick Water		
7,690.0							Frac	3/18/2014	9,928.0	10,010.0	40/70# 8809, 20/40# 100091, 15%HCl# 24bls, Slick Water		
7,771.0							Frac	3/17/2014	10,086.0	10,167.0	40/70# 9039, 20/40# 105861, 15%HCl# 24bls, Slick Water		
7,924.9							Frac	3/17/2014	10,246.0	10,327.0	40/70# 9020, 20/40# 100810, 15%HCl# 24bls, Slick Water		
8,050.9							Frac	3/17/2014	10,406.0	10,482.0	40/70# 8920, 20/40# 104680, 15%HCl# 24bls, Slick Water		
8,050.9							Frac	3/17/2014	10,566.0	10,646.0	40/70# 9217, 20/40# 99983, 15%HCl# 24bls, Slick Water		
8,208.0							Frac	3/16/2014	10,725.0	10,806.0	40/70# 9183, 20/40# 99417, 15%HCl# 24bls, Slick Water		
8,331.0							Frac	3/16/2014	10,885.0	10,963.0	40/70# 9074, 20/40# 100226, 15%HCl# 24bls, Slick Water		
8,488.8							Frac	3/16/2014	11,045.0	11,126.0	40/70# 9260, 20/40# 99340, 15%HCl# 24bls, Slick Water		
8,568.9							Frac	3/16/2014	11,205.0	11,286.0	40/70# 8899, 20/40# 99500, 15%HCl# 24bls, Slick Water		
8,727.0							Frac	3/16/2014	11,370.0	11,445.0	40/70# 8822, 20/40# 100778, 15%HCl# 24bls, Slick Water		
8,850.1							Frac	3/15/2014	11,524.0	11,605.0	40/70# 9019, 20/40# 100581, 15%HCl# 24bls, Slick Water		
9,006.9			Frac	3/15/2014	11,684.0	11,765.0	40/70# 9220, 20/40# 87670, 15%HCl# 24bls, Slick Water						
9,129.9													
9,287.1													
9,361.9													
9,525.9													
9,648.0													
9,806.1													
9,930.1													
10,086.0													
10,167.0													
10,325.1													
10,448.2													
10,605.0													
10,727.0													
10,884.8													
10,962.9													
11,124.0													
11,246.1													
11,401.9													
11,525.9													
11,684.1													
11,765.1													
11,919.9													
12,043.0													
12,165.0													
12,323.2													
12,403.9													
12,438.3													

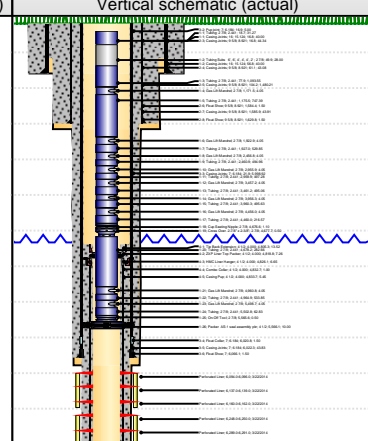


Lease Review All CR
Well Name: RAZOR 271-3413A

API Number 051233789900	WPC ID 1CO076903	Well Permit Number	Field Name DJ Horizontal Niobrara	County Weld	State CO
Well Configuration Type Lateral/Horizontal	Orig KB Elv (ft) 4,773.30	Ground Elevation (ft) 4,756.50	Casing Flange Elevation (ft)	Tubing Head Elevation (ft)	Total Depth (ftKB) 12,505.0
Original Spud Date 11/12/2013	Completion Date 3/22/2014	Asset Group Redtail Asset Group	Responsible Engineer Andrew Fish	N/S Dist (ft) 2,395.0	N/S Ref FSL
				E/W Dist (ft) 758.0	E/W Ref FEL
Lot	Quarter 1 NE	Quarter 2 SE	Quarter 3	Quarter 4	Section 27
			Section Suffix	Section Type	Township 10 N
					Range 58 W

Lateral/Horizontal - Original Hole, 5/19/2014 3:40:24 PM				Stim/Treat Stages							
MD (ftKB)	TV D (ftKB)	n cl (°)		Logs	Stage Type	Start Date	Top (ftKB)	Btm (ftKB)	Stim/Treat Fluid	Vol Clean Pump (bbl)	
56.8					Frac	3/15/2014	11,850.0	11,922.0	40/70# 8854, 20/40# 82856, 15%HCl# 24bls, Slick Water		
1,171.6				Frac	3/15/2014	12,004.0	12,084.0	40/70# 9033, 20/40# 65237, 15%HCl# 24bls, Slick Water			
1,631.2				Frac	3/14/2014	12,163.0	12,246.0	40/70# 9255, 20/40# 76935, 15%HCl# 24bls, Slick Water			
2,461.0				Frac	3/13/2014	12,323.0	12,040.0	40/70# 8942, 20/40# 102200, 15%HCl# 24bls, Slick Water			
3,956.4				Tubing - Production set at 5,576.1ftKB on 4/22/2014 09:00							
4,677.8				Set Depth (ftKB)	Comment	Run Date	Pull Date				
4,832.7				5,576.1		4/22/2014					
5,498.7				Item Des	OD (in)	ID (in)	Len (ft)	Top (ftKB)	Btm (ftKB)		
6,020.7				Tubing	2 7/8	2.441	31.27	18.7	50.0		
6,094.2				Tubing Subs 6', 6', 4', 4', 4', 2'	2 7/8		28.00	50.0	78.0		
6,162.1				Tubing	2 7/8	2.441	1,093.55	78.0	1,171.5	1,171.5	
6,331.0				Gas Lift Mandrel	2 7/8		4.05	1,171.5	1,175.6	1,175.6	
6,453.1				Tubing	2 7/8	2.441	747.39	1,175.6	1,922.9	1,922.9	
6,611.9				Gas Lift Mandrel	2 7/8		4.05	1,922.9	1,927.0	1,927.0	
6,732.9				Tubing	2 7/8	2.441	529.85	1,927.0	2,456.8	2,456.8	
6,891.1				Gas Lift Mandrel	2 7/8		4.05	2,456.8	2,460.9	2,460.9	
6,972.1				Tubing	2 7/8	2.441	494.96	2,460.9	2,955.9	2,955.9	
7,122.0				Gas Lift Mandrel	2 7/8		4.05	2,955.9	2,959.9	2,959.9	
7,255.9				Tubing	2 7/8	2.441	497.28	2,959.9	3,457.2	3,457.2	
7,410.1				Gas Lift Mandrel	2 7/8		4.05	3,457.2	3,461.2	3,461.2	
7,532.2				Tubing	2 7/8	2.441	495.06	3,461.2	3,956.3	3,956.3	
7,690.0				Gas Lift Mandrel	2 7/8		4.05	3,956.3	3,960.3	3,960.3	
7,771.0				Tubing	2 7/8	2.441	495.63	3,960.3	4,456.0	4,456.0	
7,924.9				Gas Lift Mandrel	2 7/8		4.05	4,456.0	4,460.0	4,460.0	
8,050.9				Tubing	2 7/8	2.441	216.57	4,460.0	4,676.6	4,676.6	
8,208.0				Cup Seating Nipple	2 7/8		1.10	4,676.6	4,677.7	4,677.7	
8,331.0				Cross Over 2-7/8" x 2-3/8"	2 7/8		0.50	4,677.7	4,678.2	4,678.2	
8,488.8				Tubing	2 7/8	2.441	282.66	4,678.2	4,960.9	4,960.9	
8,568.9				Gas Lift Mandrel	2 7/8		4.05	4,960.9	4,964.9	4,964.9	
8,727.0				Tubing	2 7/8	2.441	533.85	4,964.9	5,498.8	5,498.8	
8,850.1				Gas Lift Mandrel	2 7/8		4.05	5,498.8	5,502.8	5,502.8	
9,006.9				Tubing	2 7/8	2.441	62.83	5,502.8	5,565.6	5,565.6	
9,129.9				On-Off Tool	2 7/8		0.50	5,565.6	5,566.1	5,566.1	
9,287.1				Packer AS-1 seal assembly pkr	4 1/2		10.00	5,566.1	5,576.1	5,576.1	
9,361.9				Rod Strings							
9,525.9				<des> on <dtmrun>							
9,648.0				Rod Description	Run Date	Pull Date					
9,806.1				Item Des	OD (in)	Len (ft)	Top (ftKB)	Btm (ftKB)			
9,930.1											
10,086.0				Other Strings							
10,167.0			Set Depth (ftKB)	Comment	Run Date	Pull Date					
10,325.1			Item Des	OD (in)	Len (ft)	Top (ftKB)	Btm (ftKB)				
10,448.2											
10,605.0			Other In Hole								
10,727.0			Des	OD (in)	Run Date	Pull Date	Top (ftKB)	Btm (ftKB)			
10,884.8			CFP	4	3/22/2014	4/21/2014	6,202.0	6,204.0			
10,962.9			CFP	4	3/22/2014	4/21/2014	6,372.0	6,374.0			
11,124.0			CFP	4	3/22/2014	4/21/2014	6,532.0	6,534.0			
11,246.1			CFP	4	3/22/2014	4/21/2014	6,686.0	6,688.0			
11,401.9			CFP	4	3/21/2014	4/21/2014	6,851.0	6,853.0			
11,525.9			CFP	4	3/21/2014	4/21/2014	7,015.0	7,017.0			
11,684.1			CFP	4	3/21/2014	4/21/2014	7,160.0	7,162.0			
11,785.1			CFP	4	3/21/2014	4/21/2014	7,328.0	7,330.0			
11,919.9			CFP	4	3/21/2014	4/21/2014	7,490.0	7,492.0			
12,043.0			CFP	4	3/20/2014	4/21/2014	7,656.0	7,658.0			
12,165.0			CFP	4	3/20/2014	4/21/2014	7,815.0	7,817.0			
12,323.2			CFP	4	3/20/2014	4/21/2014	7,965.0	7,967.0			
12,403.9			CFP	4	3/20/2014	4/21/2014	8,130.0	8,132.0			
12,438.3			CFP	4	3/20/2014	4/21/2014	8,289.0	8,291.0			
			CFP	4	3/20/2014	4/21/2014	8,444.0	8,446.0			
			CFP	4	3/20/2014	4/21/2014	8,609.0	8,611.0			
			CFP	4	3/19/2014	4/21/2014	8,769.0	8,771.0			
			CFP	4	3/19/2014	4/21/2014	8,925.0	8,927.0			
			CFP	4	3/19/2014	4/21/2014	9,088.0	9,090.0			
			CFP	4	3/19/2014	4/21/2014	9,248.0	9,250.0			
			CFP	4	3/19/2014	4/22/2014	9,400.0	9,402.0			



Lateral/Horizontal - Original Hole, 5/19/2014 3:40:25 PM					Other In Hole					
MD (ftKB)	TV D (ftK B)	n cl (°)		Logs	Des	OD (in)	Run Date	Pull Date	Top (ftKB)	Btm (ftKB)
					CFP	4	3/18/2014	4/22/2014	9,567.0	9,569.0
					CFP	4	3/18/2014	4/22/2014	9,727.0	9,729.0
56.8					CFP	4	3/18/2014	4/22/2014	9,877.0	9,879.0
1,171.6					CFP	4	3/18/2014	4/22/2014	10,037.0	10,039.0
1,631.2					CFP	4	3/17/2014	4/22/2014	10,207.0	10,209.0
2,461.0					CFP	4	3/17/2014	4/22/2014	10,366.0	10,368.0
3,956.4					CFP	4	3/17/2014	4/22/2014	10,520.0	10,522.0
4,677.8					CFP	4	3/17/2014	4/22/2014	10,686.0	10,688.0
4,832.7					CFP	4	3/17/2014	4/22/2014	10,846.0	10,848.0
5,498.7					CFP	4	3/16/2014	4/22/2014	11,005.0	11,007.0
6,020.7					CFP	4	3/16/2014	4/22/2014	11,165.0	11,167.0
6,094.2					CFP	4	3/16/2014	4/22/2014	11,330.0	11,332.0
6,162.1					CFP	4	3/16/2014	4/22/2014	11,485.0	11,487.0
6,331.0					CFP	4	3/16/2014	4/22/2014	11,645.0	11,647.0
					CFP	4	3/15/2014	4/22/2014	11,810.0	11,812.0
				CFP	4	3/15/2014	4/22/2014	11,948.0	11,950.0	
				CFP	4	3/15/2014	4/22/2014	12,124.0	12,126.0	

Page 7/7