



Weatherford®

Tooke Rockies, Inc.
(A Weatherford Company)

884 Implement Dr.
Dickinson, ND 58601
701-227-4408

717 West Platte
PO BOX 435
Casper, WY 82601
307-265-2124

Surface Logging Systems

Scale 1:240 (5"=100') Imperial
Measured Depth Log

Well Name: State Blanca 1H(Build Sec.)
Well Id:
Location: NW/NE, Sec 12,T5S-R65W. Arapahoe County, CO
License Number: API- 05-005-07220-00 Region: DJ Basin
Spud Date: 5/16/2014 Drilling Completed: 6/18/2014
Surface Coordinates: 820' FNL & 2440' FEL of NW/NE of , Sec.12,T5S-R65W,
Arapahoe County, CO.
Bottom Hole 667' FNL & 1662' FEL of Sec. 12, T5S-R65W, Arapahoe County,CO.
Coordinates:
Ground Elevation (ft): 5862' K.B. Elevation (ft): 5886'
Logged Interval (ft): 7200' To: 8385' Total Depth (ft): 8385'
Formation: Niobrara
Type of Drilling Fluid: INVERT/OBM

Printed by MUD.LOG from WellSight Systems 1-800-447-1534 www.WellSight.com

OPERATOR

Company: Conoco/Phillips
Address: Attn: Abby Tomkiewicz
Three Westlake Park, Rm 14013
550 Westlake Park Blvd,Houston, TX 77079,Office: 832-486-2543.

GEOLOGIST

Name: Todd Thiesse, Douglas Bower
Company: Tooke Rockies/ Weatherford SLS
Address: PO Box 435
Casper, WY. 82602
307.265.2124

Supervision

Project Geologist: Barbara Tillotson- Conoco/Phillips
Drilling Engineer: Gary Hamilton, Ben Tolman, John Bengé, James Hayes- Conoco/Phillips
Drilling Sup: Bob Strickler- Conoco/Phillips
Company Rep: Richard Perez, Wes Evans, (Day Leads)
Company Rep: Frank Holubec, Mike Weatherly (Night Leads)
Well Site Safety: Rainey Schexnider, Jeff Frantz
Contact Geologist: Abby Tomkiewicz, Abby Thornton- Conoco/Phillips
Drilling & Comp. Mgr: Derly Gonzalez-Conoco/Phillips

Comments

Drilling Co.--H & P, Rig #280

Toolpusher- , Mike Stevens, Josh Coleman

Dir. Co.- Sperry

Mud Co.- Baroid/Haliburton, Chase Putnam, Kevin Wolff

ROCK TYPES

Anhy
Bent
Brec
Cht

Clyst
Coal
Congl
Dol

Gyp
Igne
Lmst
Meta

Mrlst
Salt
Shale
Shcol

Shgy
Sltst
Ss
Till

ACCESSORIES

MINERAL

Anhy
Arggrn
Arg
Bent
Bit
Brecfrag
Calc
Carb
Chtdk
Chtlt
Dol
Feldspar
Ferrpel
Ferr
Glau

Gyp
Hvymin
Kaol
Marl
Minxl
Nodule
Phos
Pyr
Salt
Sandy
Silt
Sil
Sulphur
Tuff

FOSSIL

Algae
Amph
Belm
Bioclst
Brach
Bryozoa
Cephal
Coral
Crin
Echin
Fish
Foram
Fossil
Gastro
Oolite

Ostra
Pelec
Pellet
Pisolite
Plant
Strom

STRINGER

Anhy
Arg
Bent
Coal
Dol
Gyp
Ls
Mrst

Sltstrg
Ssstrg

TEXTURE

Boundst
Chalky
Cryxln
Earthy
Finexln
Grainst
Lithogr
Microxln
Mudst
Packst
Wackest

OTHER SYMBOLS

INTERVALS

Core
Dst

EVENTS

Rft
Sidewall

POROSITY TYPE

Earthy
Fenest
Fracture
Inter
Moldic
Organic

Pinpoint
Vuggy

SORTING

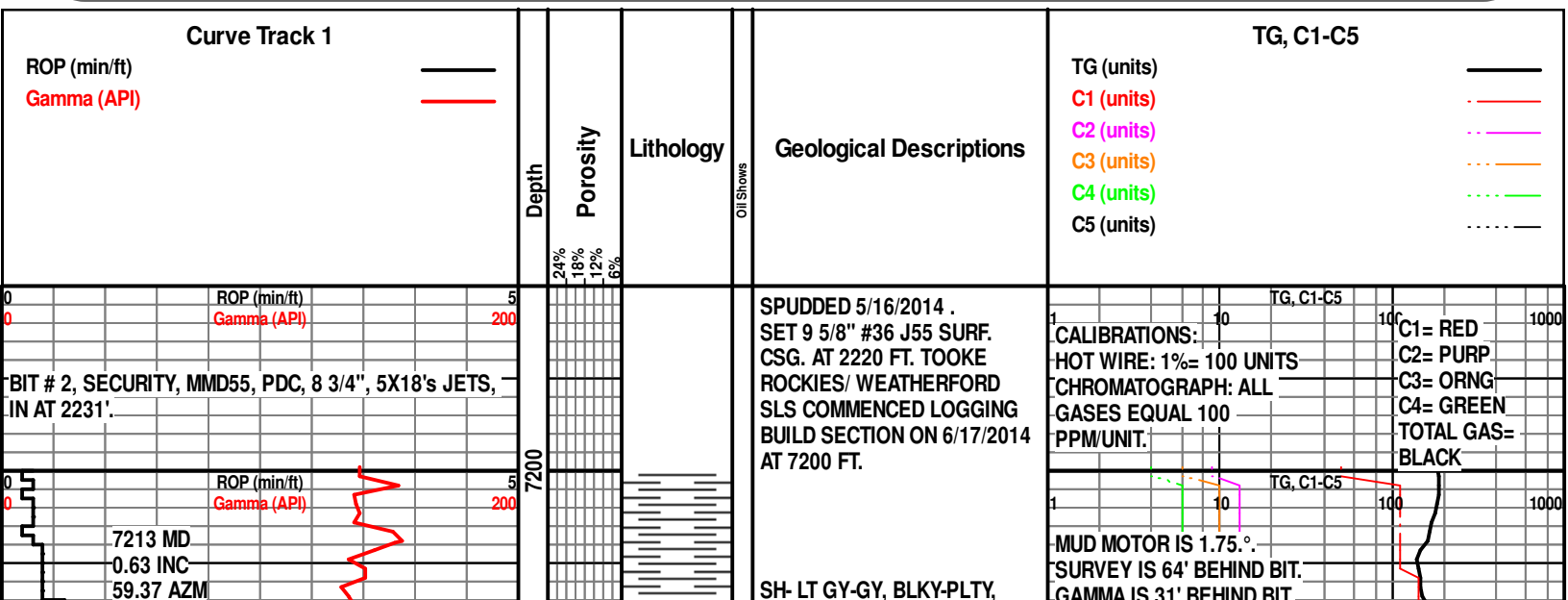
Well
Moderate
Poor

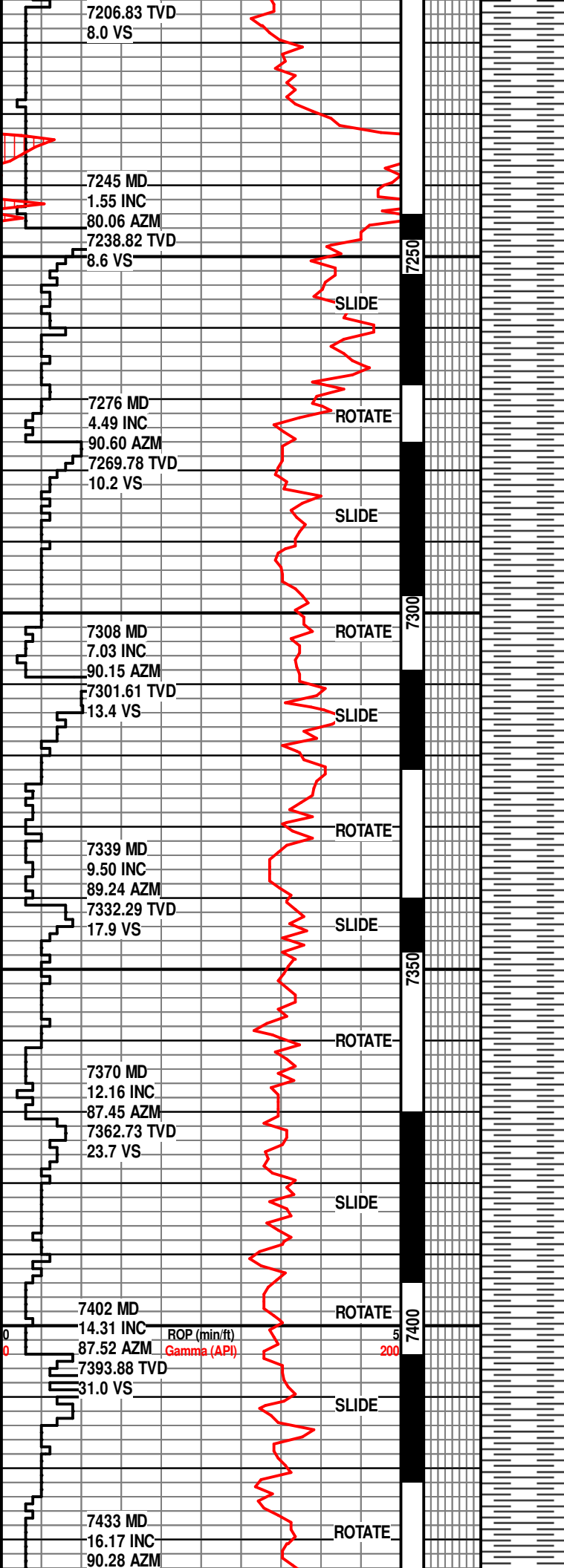
ROUNDING

Rounded
Subrnd
Subang
Angular

OIL SHOWS

Even
Spotted
Ques
Dead





SBWXY, NON-V CL CALC, SFT.

KICK OFF POINT=
7246' MD.

SH- LT GY-GY, BLKY-PLTY,
SBWXY, SL-NON CALC, V
SFT-SFT.

SH- LT GY-GY, BLKY-PLTY,
SBWXY, SL-NON CALC, SFT.

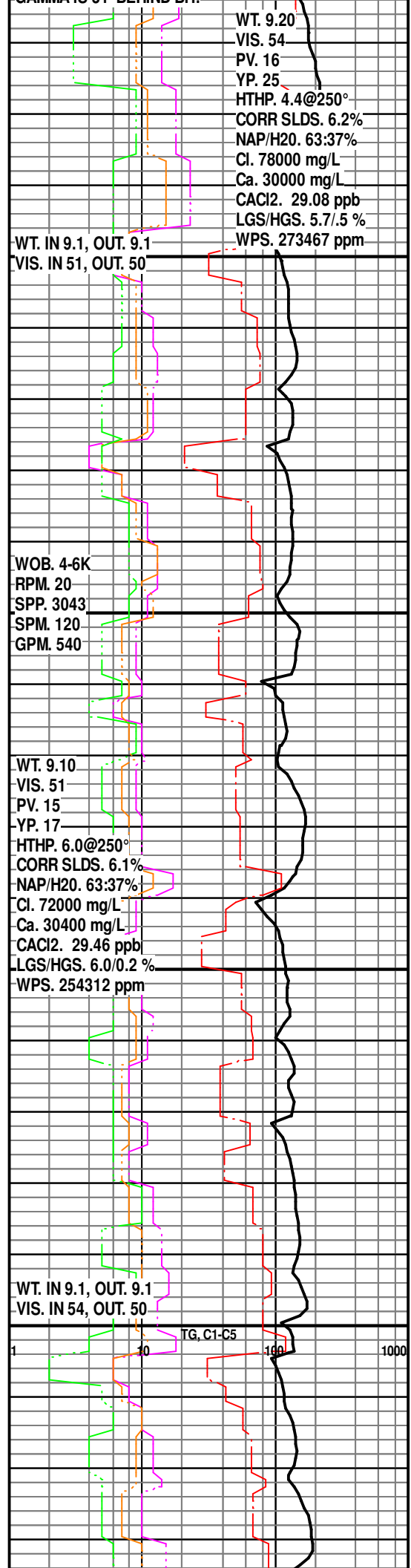
SH- LT GY-GY, BLKY-PLTY,
SBWXY, SL-NON CALC, SFT.

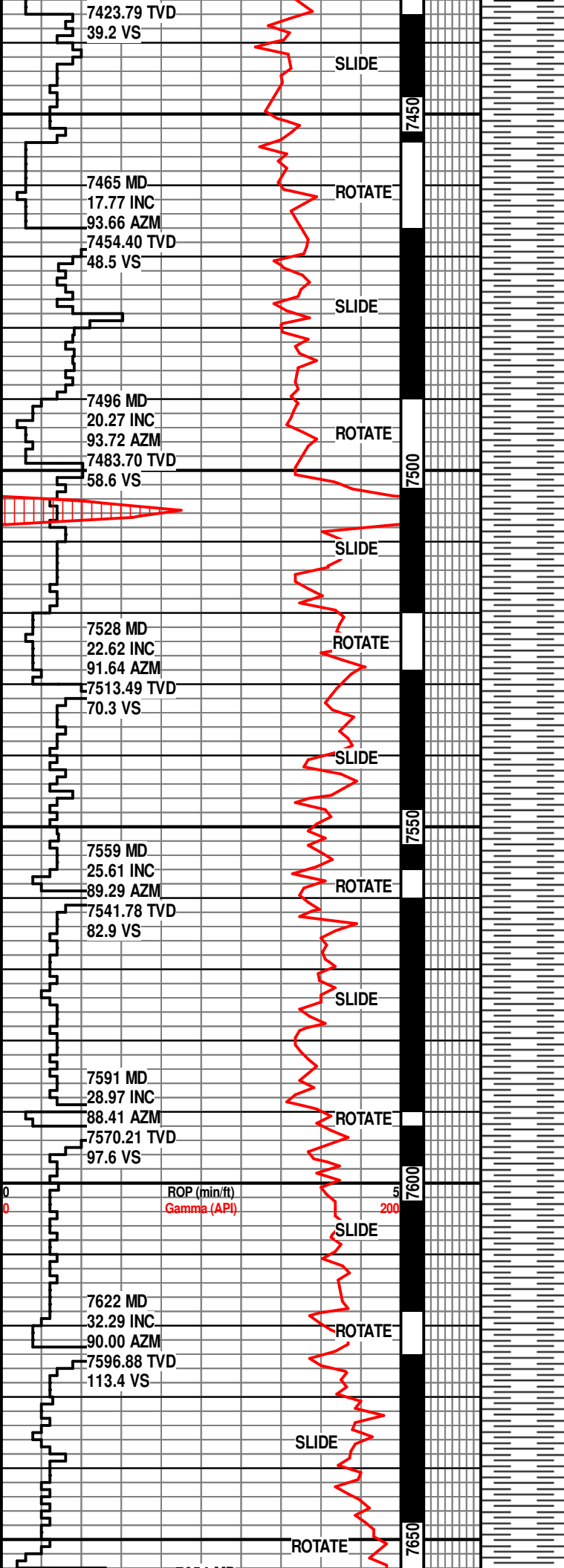
SH- LT GY-GY, SME DK GY,
BLKY-PLTY, SBWXY, SL-NON
CALC, SFT.

6/18/2014

SH- LT GY-GY, OCC DK GY,
BLKY-PLTY, SBWXY, SL-NON
CALC, SFT.

SH- LT GY-GY, SCT DK GY,
BLKY-PLTY, SBWXY, SL-NON
CALC, SFT-SL FRM.





SH- LT GY-GY, SME DK GY,
BLKY-PLTY, SBWXY, SL-NON
CALC, SFT-SL FRM.

SH- LT GY-GY, OCC DK GY,
BLKY-PLTY, SBWXY, SL-NON
CALC, SFT-SL FRM.

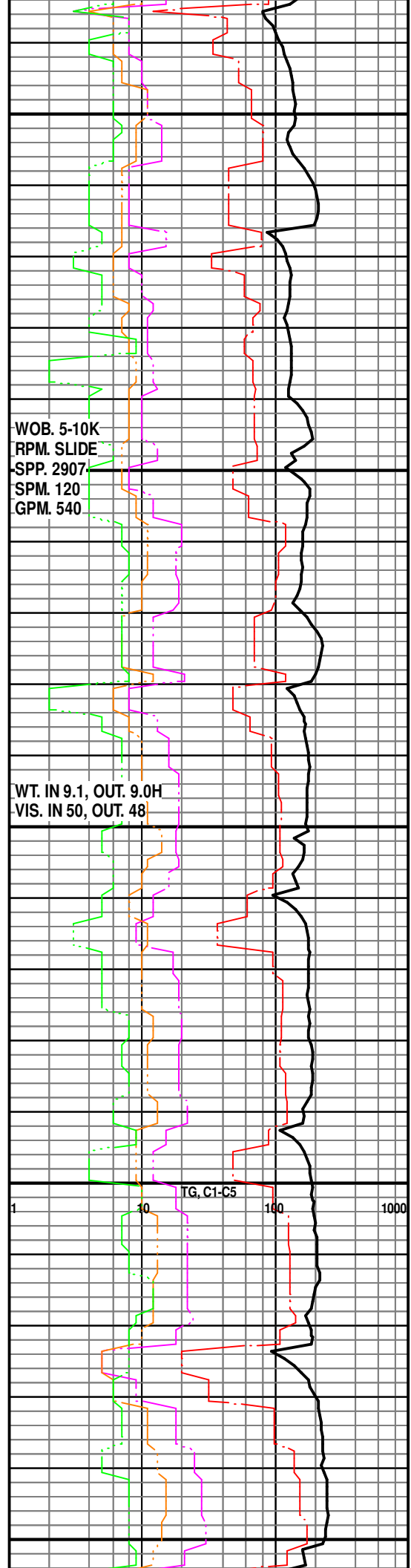
SH- LT GY-GY, SME DK BRN,
BLKY-PLTY, SBWXY, SL-NON
CALC, SFT-MOD FRM.

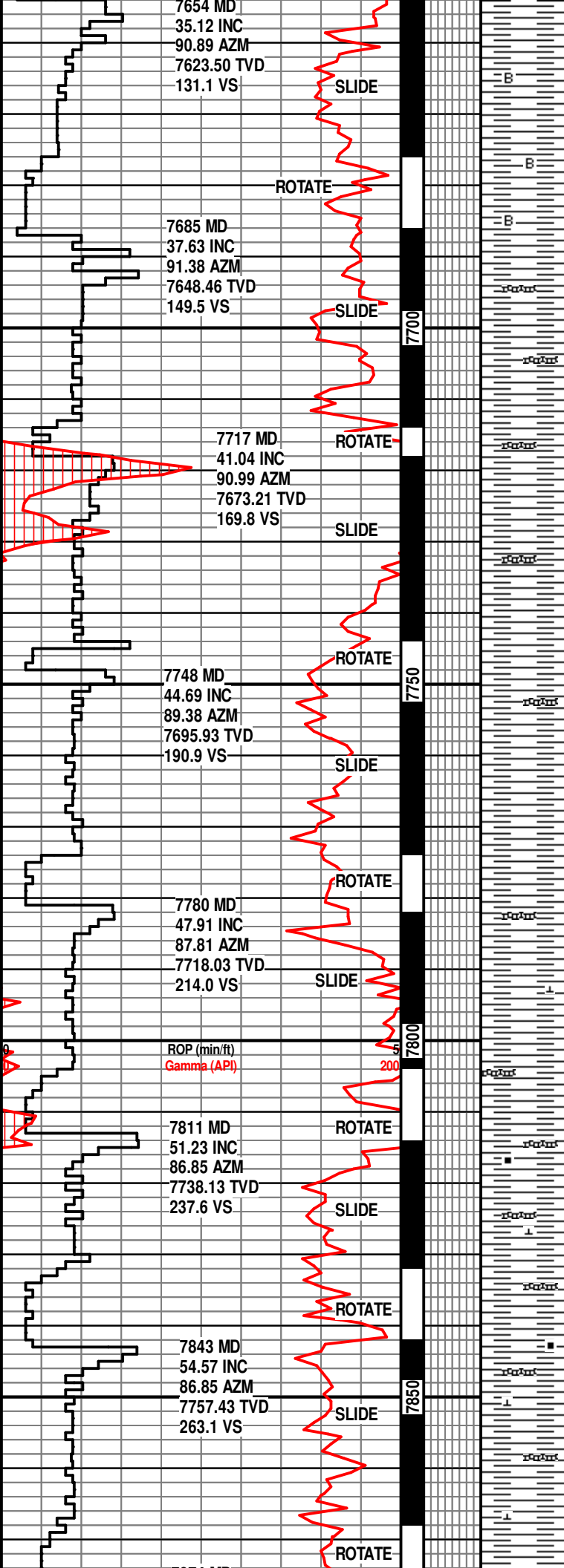
SH- GY-LT GY, SME DK GY,
BLKY-PLTY, SBWXY, SL-NON
CALC, SFT-MOD FRM.

SH- GY-LT GY, SCT DK GY,
BLKY-PLTY, SBWXY, SL-NON
CALC, SFT-MOD FRM.

SH- GY-LT GY, SME DK GY-DK
BRN, SLKY-PLTY, SBWXY, V
SL CALC, SFT-MOD FRM.

SH- GY-LT GY, OCC DK GY-DK
BRN, BLKY-PLTY, SBWXY, SL
CALC, SFT-MOD FRM.





SMPL TOP SHARON SPGS. AT 7662'.

SH- GY-LT GY, SME DK GY,
BLKY-PLTY, SBWXY, SL CALC,
SFT-MOD FRM. W/ TR BENT-LT
GY.

SH- GY-LT GY, OCC DK GY,
BLKY-PLTY, SBWXY, SL-NON
CALC, SFT-FRM. W/ BENT- LT
GY, TAN-BL/GN.

SH- GY-LT GY, OCC DK GY,
BLKY-PLTY, SBWXY, SL-NON
CALC, SFT-FRM. W/ BENT- LT
GY, TAN-BL/GN.

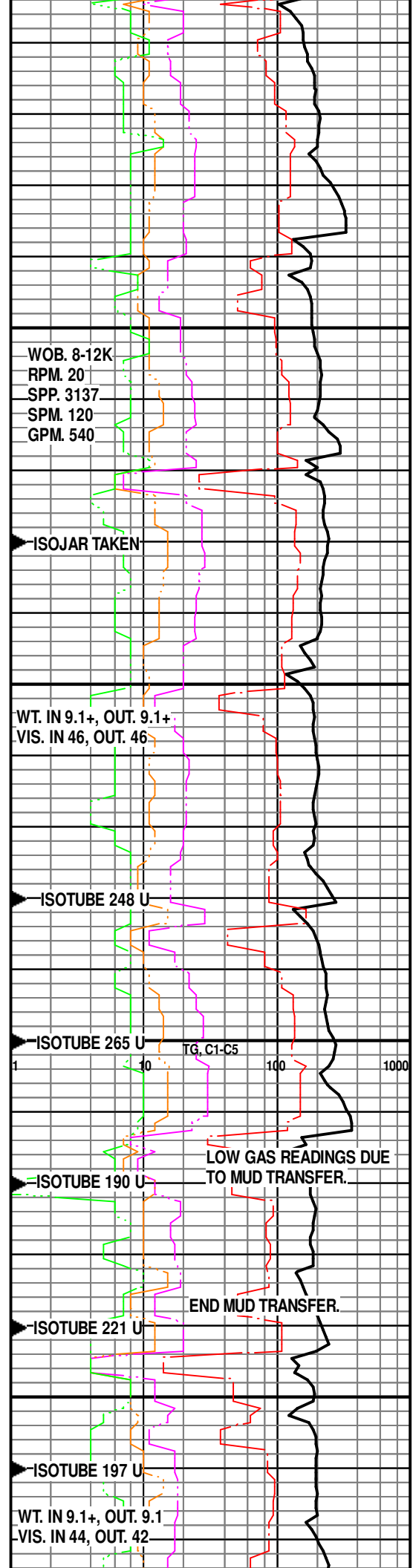
SH- GY-DK GY, SME LT GY,
BLKY-PLTY, SBWXY, SL INCR
CALC, BCM CARB, SFT-FRM.
W/ BENT- LT GY, TAN-BL/GN.

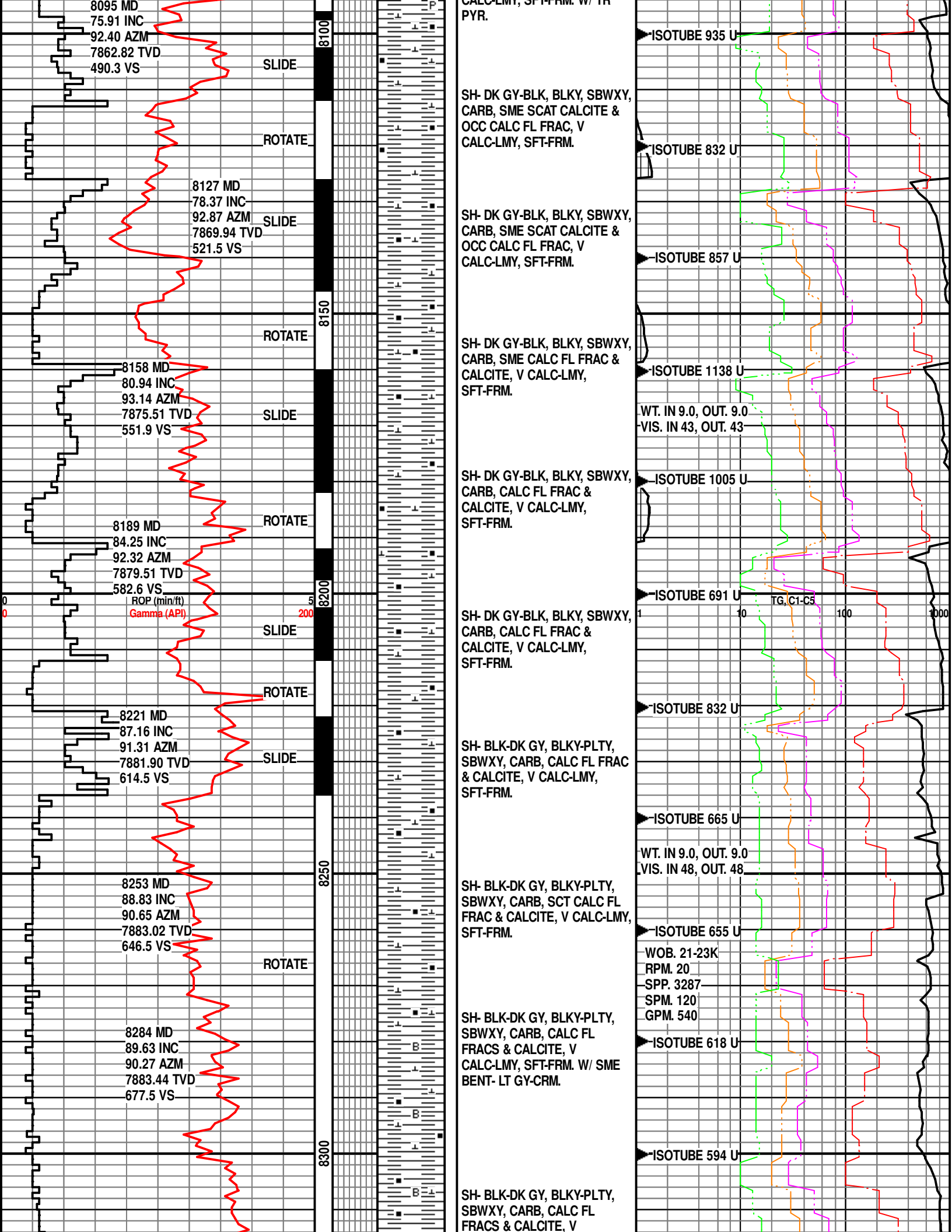
SH- GY-DK GY, SME LT GY,
BLKY-PLTY, SBWXY, SL INCR
CALC, BCM CARB, SFT-FRM.
W/ DECR BENT- LT GY,
TAN-BL/GN.

SH- GY-DK GY, BLKY, SBWXY,
CALC, BCM CARB, SFT-FRM.
W/ BENT- LT GY-GN, BRN-TAN.

SH- GY-DK GY, BLKY, SBWXY,
CALC, BCM CARB, SFT-FRM.
W/ BENT- LT GY-GN, BRN-TAN.

SH- GY-DK GY, BLKY, SBWXY,
SL INCR CALC, BCM CARB,
SFT-FRM. W/ BENT- LT GY-GN,
BRN-TAN.





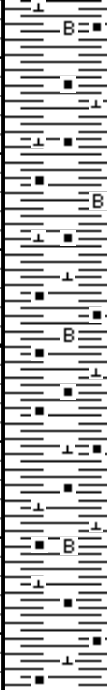
8321 MD
90.80 INC
90.19 AZM
7883.30 TVD
714.5 VS

Proj. to bit survey

8385 MD
90.80 INC
90.19 AZM
7882.41 TVD
778.5 VS

8350

00



CALC-LMY, SFT-FRM. W/ SME
BENT- LT GY-CRM.

SH- BLK-DK GY, BLKY-PLTY,
SBWXY, CARB, SME CALC FL
FRACS & CALCITE, V
CALC-LMY, SFT-FRM. W/ TR
BENT- LT GY-CRM.

SH- BLK-DK GY, BLKY-PLTY,
SBWXY, CARB, SME CALC FL
FRACS & CALCITE, V
CALC-LMY, SFT-FRM. W/
TR-NONE BENT- LT GY-CRM.

**TD THE BUILD SEC.
AT 8385' MD ON
6/18/2014 AT 7:25 PM.
DRILLERS DEPTH.**

Please refer to the Horz. Log
for the remainder of this well.

