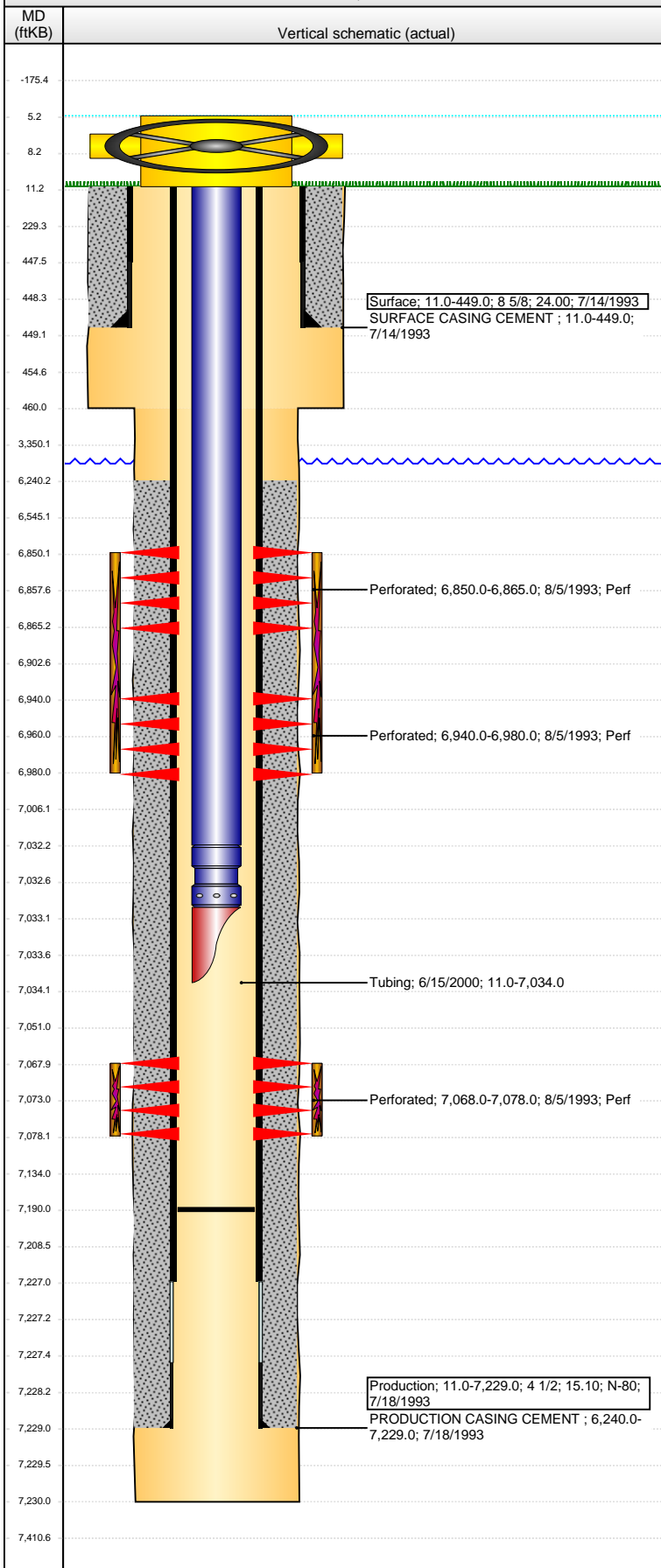


Well Name: DINNER 01-44

VERTICAL - ORIGINAL HOLE, 7/24/2014 10:11:42 AM



Well Header

API 05-123-17082	Business Unit WATTENBERG	District 15	Well Config VERTICAL
Original KB Elevation (ft) 4,811.00	KB - GL / MSL (ftKB) 11.00	Spud Date 7/13/1993	P & A Date

Comment

SURFACE CSG SET DEPTH DISCREPANCY: ST COMP RPT = 440, DRL RPTS & INDUCTION LOG = 449, DISCREPANCY IN # OF CMT SXs FOR SURFACE CSG: ST COMP RPT = 300, DRL RPT = 329

Directions To Well

Congressional Location

Quarter 1	Quarter 2	Quarter 3	Quarter 4	Section	Township	Twtnsh N...	Range	Rng E/W Dir
	NE	SE	SE	1	4	N	65	W

Bottom Hole Location

North-South Distance (ft)	From N or S Line	East-West Distance (ft)	From E or W Line
---------------------------	------------------	-------------------------	------------------

Plug Back Total Depths

Date	Depth (ftKB)	Method	Com
7/18/1993	7,202.0	TAG	FLOAT SHOE
7/21/1993	7,175.0	CASED HOLE LOG	DEPTH LOGGER FROM CBL
6/15/2000	7,190.0	TAG	CLEAN OUT & LAND TBG

Wellbore Sections

Section Des	Size (in)	Act Top, MD (ftKB)	Act Btm, MD (ftKB)
SURFACE	12 1/4	11.0	460.0
PRODUCTION	7 7/8	460.0	7,230.0

Zone Statuses

Zone Name	Status Date	Status	Job
CODELL	8/12/1993	PR	DRILLING/COMPLETION - ORIGINAL, 7/13/1993 00:00
CODELL	6/16/2000	PR	RE-FRAC, 6/6/2000 00:00
NIOBRARA	8/12/1993	PR	DRILLING/COMPLETION - ORIGINAL, 7/13/1993 00:00

Casing Strings

Surface, 449.0ftKB

Casing Description	Run Date	OD (in)	Wt/Len (l...)	Grade	Top, MD (ft...)	MD (ftKB)
Surface	7/14/1993	8 5/8	24.00		11.0	449.0

Production, 7,229.0ftKB

Casing Description	Run Date	OD (in)	Wt/Len (l...)	Grade	Top, MD (ft...)	MD (ftKB)
Production	7/18/1993	4 1/2	15.10	N-80	11.0	7,229.0

Cement

Description	Top Depth (ftKB)	Bottom Depth (ftKB)
SURFACE CASING CEMENT	11.0	449.0
PRODUCTION CASING CEMENT	6,240.0	7,229.0

Tubing Components

Item Des	OD (in)	Wt (lb/ft)	Grade	Jts	Len (ft)	Btm (ftKB)	Btm (TVD) (ftKB)
Tubing	2 3/8			225	7,021.00	7,032.0	
Pump Seating Nipple	2 3/8	1.10			1.00	7,033.0	
mule shoe	2 3/8				1.00	7,034.0	

Perforation Data

Zone	Bnch/St g	Entered Shot Total	Top (ftKB)	Btm (ftKB)	Date
NIOBRARA, ORIGINAL HOLE	A	5	6,850.00	6,865.00	8/5/1993
NIOBRARA, ORIGINAL HOLE	B	12	6,940.00	6,980.00	8/5/1993
CODELL, ORIGINAL HOLE		40	7,068.00	7,078.00	8/5/1993

Stimulations & Treatments

Date	Zone	Primary Job Type
8/7/1993	NIOBRARA, ORIGINAL HOLE	DRILLING/COMPLETION - ORIGINAL
Technical Result	Tech Result Details	Tech Result Note

Comment

Date	Zone	Primary Job Type
8/7/1993	CODELL, ORIGINAL HOLE	DRILLING/COMPLETION - ORIGINAL
Technical Result	Tech Result Details	Tech Result Note

Comment

Well Name: DINNER 01-44

VERTICAL - ORIGINAL HOLE, 7/24/2014 10:11:44 AM

Stimulations & Treatments

Date 6/14/2000	Zone CODELL, ORIGINAL HOLE	Primary Job Type RE-FRAC
Technical Result	Tech Result Details	Tech Result Note
Comment		

Other In Hole

Run Date	Des	OD (in)	Top (ftKB)	Btm (ftKB)

Logs

Date	Type	Top, MD (ftKB)	Btm, MD (ftKB)
7/18/1993	COMPENSATED DENSILOG	4,310.0	7,194.0
7/18/1993	INDUCTION	449.0	7,222.0
7/21/1993	CEMENT BOND	6,100.0	7,170.0
4/6/2011	GYRO	10.0	7,000.0

