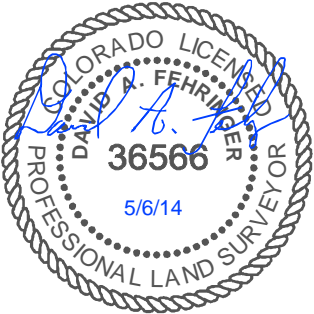


NOTE: Under Colorado law, you must commence any legal action based upon any defect in this certificate within three years after defect is discovered. In no event, may any action based upon any defect in this survey be commenced more than ten years after date of this certificate shown hereon. (13-80105 C.R.S)



NOTES:

- All bearings are GRID based upon the Colorado State Plane Coordinate System, North Zone, NAD83(2011) derived from post-processed static GPS observations.
- Distances are at GROUND
- Vertical Datum is NAVD88 based upon GPS observations
- PDOP value equals 2.5.
- GPS operator: Dave Fehring.
- Undisturbed ground elevation at wellhead = 4564'
- All section lengths are measured distances unless noted by (R), record bearing and distance.
- Nearest Cultural Distances
 - Buildings: 4250'+/-
 - Building Unit: 5280'+/-
 - High Occupancy Building Unit: 5280'+
 - Designated Outside Activity Area: 5280'+
 - Public Road: 214'+/-
 - Above Ground Utility: 5280'+
 - Railroad: 5280'+
 - Property Line: 1356' (NE cor S32)

SURFACE LOCATION: (NAD83)
GEODETIC COORDINATES
LAT 40.36106°
LONG 104.22519°

STATE PLANE (CO-N NAD83)
N=1,376,927 ft
E=3,355,238 ft

CERTIFICATE OF SURVEYOR

I, David A. Fehring of Lander, Wyoming hereby certify that this well location certificate was prepared from notes taken during an actual survey on MAY 1, 2014; and that it correctly shows the drilling location of BONANZA CREEK ENERGY, INC., STATE PRONGHORN U-32-31MRLNB as staked during said survey. This map does not represent a boundary survey or an improvement location plat and should not be used for the establishment of boundary lines.

TARGET #1: (NAD83)
GEODETIC COORDINATES
LAT 40.36454°
LONG 104.22548°

STATE PLANE (CO-N NAD83)
N=1,378,193 ft
E=3,355,140 ft

BOTTOM HOLE LOCATION:
GEODETIC COORDINATES
LAT 40.36439°
LONG 104.25188°

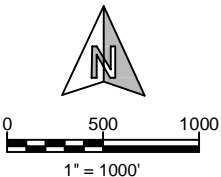
STATE PLANE (CO-N NAD83)
N=1,378,036 ft
E=3,347,748 ft

SHEET NO:

1 of 2



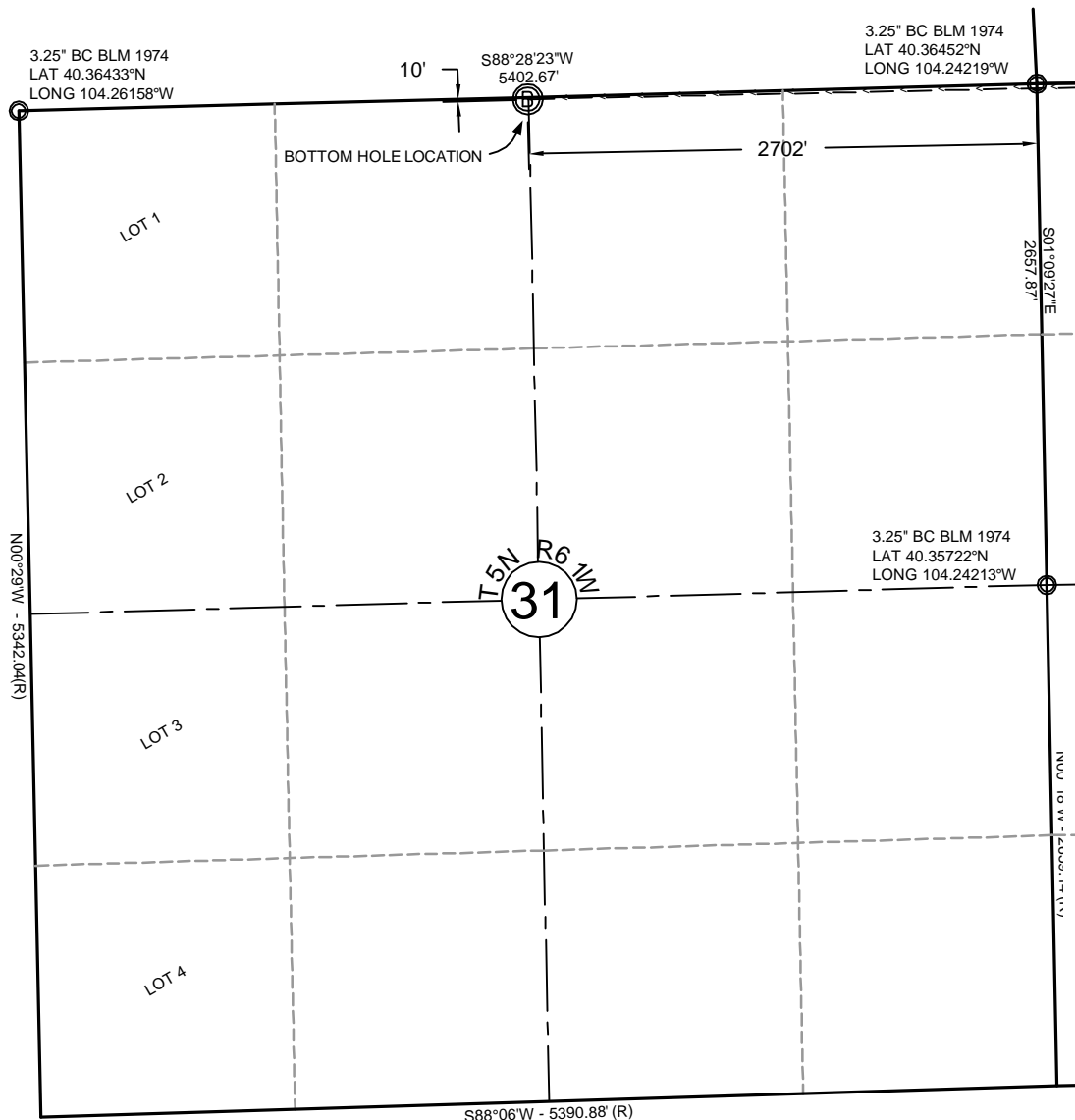
Drawn By: DAF
Checked By: JS
Date: 5/6/14
Revision: #2
Date: 6/28/14
Explanation: Move location 20' west



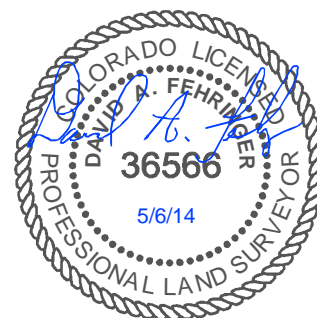
WELL LOCATION CERTIFICATE

STATE PRONGHORN
U-32-31MRLNB
1278' FNL, 468' FEL
NE 1/4 NE 1/4, SECTION 32,
T.5N., R.61W., 6th PM
WELD COUNTY, COLORADO





NOTE: Under Colorado law, you must commence any legal action based upon any defect in this certificate within three years after defect is discovered. In no event, may any action based upon any defect in this survey be commenced more than ten years after date of this certificate shown hereon. (13-80105 C.R.S.)



NOTES:

- All bearings are GRID based upon the Colorado State Plane Coordinate System, North Zone, NAD83(2011) derived from post-processed static GPS observations.
- Distances are at GROUND
- Vertical Datum is NAVD88 based upon GPS observations
- PDOP value equals 2.5.
- GPS operator: Dave Fehring.
- Undisturbed ground elevation at wellhead = 4564'
- All section lengths are measured distances unless noted by (R), record bearing and distance.
- Nearest Cultural Distances
 - Buildings: 4250'+/-
 - Building Unit: 5280'+/-
 - High Occupancy Building Unit: 5280'+
 - Designated Outside Activity Area: 5280'+
 - Public Road: 214'+/-
 - Above Ground Utility: 5280'+
 - Railroad: 5280'+
 - Property Line: 1356' (NE cor S32)

SURFACE LOCATION: (NAD83) GEODETIC COORDINATES

LAT 40.36106°
LONG 104.22519°

STATE PLANE (CO-N NAD83)

N=1,376,927 ft
E=3,355,238 ft

CERTIFICATE OF SURVEYOR

I, David A. Fehring of Lander, Wyoming hereby certify that this well location certificate was prepared from notes taken during an actual survey on MAY 1, 2014; and that it correctly shows the drilling location of BONANZA CREEK ENERGY, INC., STATE PRONGHORN U-32-31MRLNB as staked during said survey. This map does not represent a boundary survey or an improvement location plat and should not be used for the establishment of boundary lines.

TARGET #1: (NAD83)

GEODETIC COORDINATES
LAT 40.36454°
LONG 104.22548°

STATE PLANE (CO-N NAD83)

N=1,378,193 ft
E=3,355,140 ft

BOTTOM HOLE LOCATION:

GEODETIC COORDINATES
LAT 40.36439°
LONG 104.25188°

STATE PLANE (CO-N NAD83)

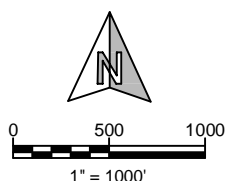
N=1,378,036 ft
E=3,347,748 ft

SHEET NO:

2 of 2



Drawn By: DAF
Checked By: JS
Date: 5/6/14
Revision: #2
Date: 6/28/14
Explanation: Move location 20' west



WELL LOCATION CERTIFICATE

STATE PRONGHORN
U-32-31MRLNB (BOTTOM HOLE)
10' FNL, 2702' FEL
NE $\frac{1}{4}$ NW $\frac{1}{4}$, SECTION 31,
T.5N., R.61W., 6th PM
WELD COUNTY, COLORADO

