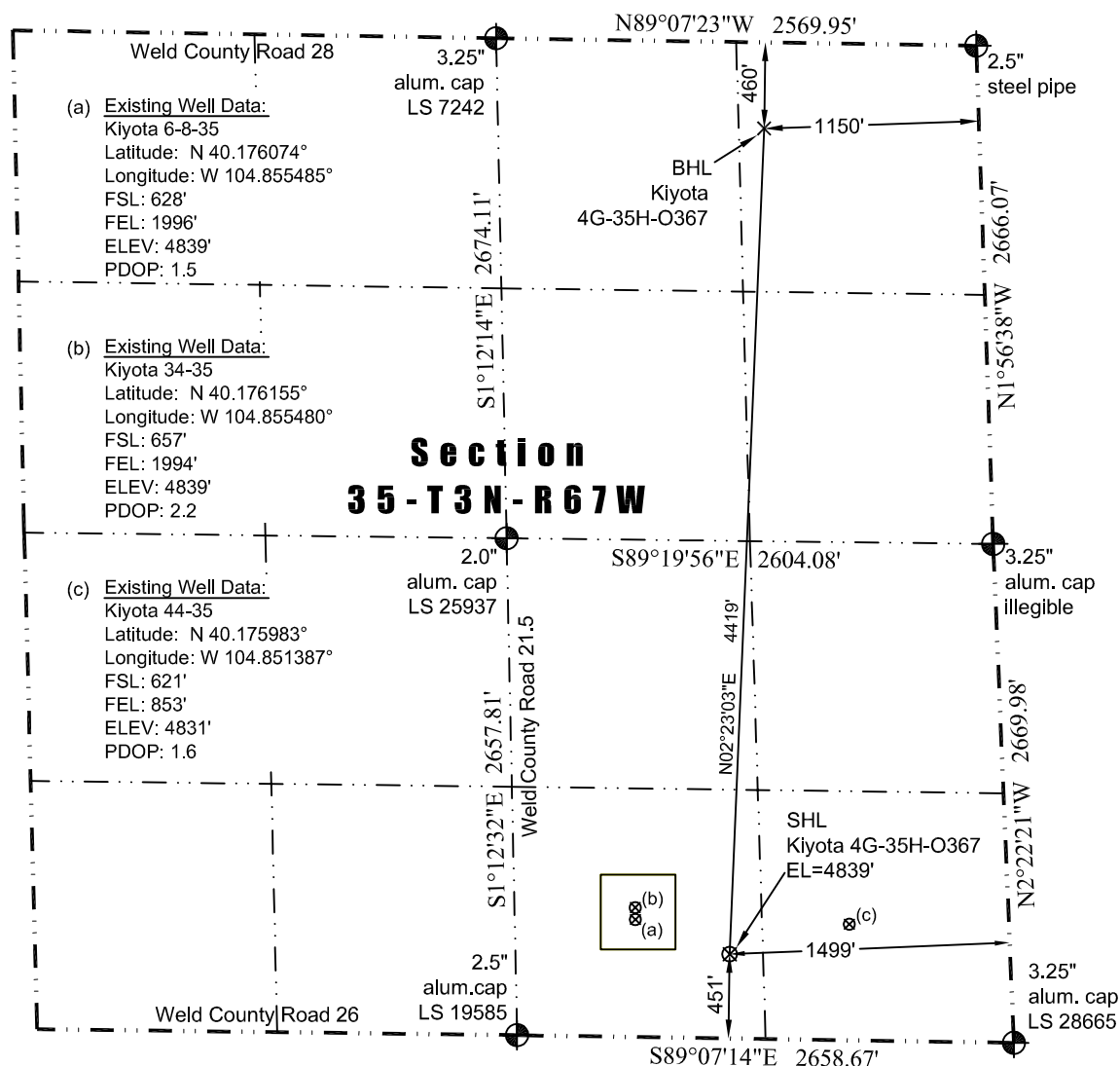




WELL LOCATION CERTIFICATE

THIS MAP DOES NOT REPRESENT A BOUNDARY SURVEY

Washburn Land Surveying
www.WashburnSurveying.com
970-232-9645



Scale 1" = 1000'
approximate scale

LEGEND
— found survey monument
— calculated dimension

In accordance with a request from Jay Knutson of EnCana Oil & Gas (USA) Inc., Washburn Land Surveying, LLC has determined the location of the **Kiyota 4G-35H-O367** well site to be SHL: 451' FSL and 1499' FEL, (BHL: 460' FNL and 1150' FEL), as measured at ninety (90) degrees from the section lines of Section 35, Township 3 North, Range 67 West of the 6th Principal Meridian, Weld County Colorado.

Proposed Surface Hole Data:

Latitude: N 40.175556° (BHL: 40.187673°)
Longitude: W 104.853682° (BHL: 104.852909°)
PDOP: 1.4

Nearest:

Building Unit: 990' southwest
Building: 357' southwest
Public Road: 1,137' southwest
Property Line: 451' south
Existing Well: Kiyota 6-8-35; 538' northwest

Above Ground Utility: 453' southwest
Railroad: +5,280'
Well Window: SHL is 292' outside
High Occupancy Building Unit: +5,280'

I hereby certify that this Well Location Certificate was prepared by me or under my direct supervision on 7/11/2014 for and on behalf of EnCana Oil & Gas (USA) Inc. That it is not a Land Survey Plat or an Improvement Survey Plat and that it is not to be relied upon for establishment of fences, buildings, or other future improvement lines.

Notes:

- 1) Bearings and distances based on NAD 83 Colorado North State Plane Coordinate, using RTK GPS observations taken 7/10/14 by operator Chris Bettencourt.
- 2) Conversion factor to ground (1.0002704325).
- 3) Elevations based on NAVD 88 GPS heights and Geoid 2009 corrections.
- 4) See Location Drawing for visible improvements within 500 feet of Pad Site.
- 5) The surface use is a cultivated field.

NOTICE: According to Colorado law you must commence any legal action based upon any defect in this W.L.C. within three years after you first discover such defect. In no event may any action based upon any defect in this W.L.C. be commenced more than ten years from this said date of the certification shown hereon.

John Robert McGehee LS#38219
Well: Kiyota 4G-35H-O367 WLC