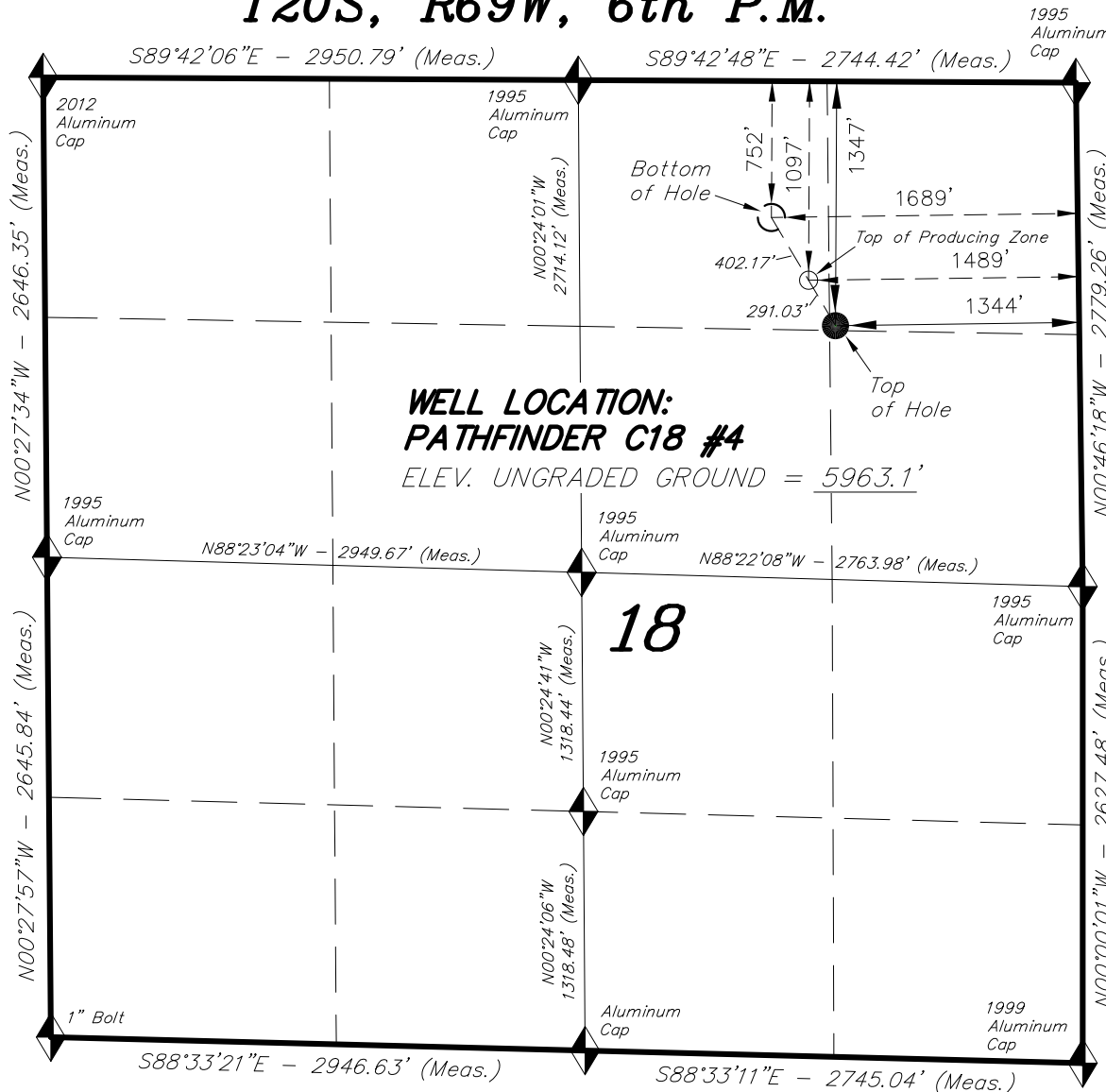


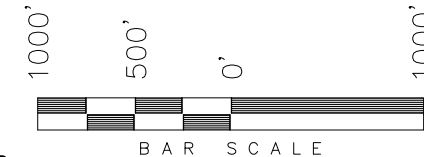
T20S, R69W, 6th P.M.

AUS-TEX EXPLORATION INC



WELL LOCATION, PATHFINDER C18 #4,
LOCATED AS SHOWN IN THE NE 1/4
NE 1/4 OF SECTION 18, T20S, R69W,
6th P.M. FREMONT COUNTY, COLORADO.

TARGET BOTTOM HOLE, PATHFINDER C18
#4, LOCATED AS SHOWN IN THE NW 1/4
NE 1/4 OF SECTION 18, T20S, R69W, 6th
P.M. FREMONT COUNTY, COLORADO.



NOTES:

1. Well footages are measured at right angles to the Section Lines.
2. Bearings are based on Global Positioning Satellite observations.
3. G.P.S. Operator: M. Petty, (PDOP) = 1.7
4. The Bottom of Hole Bears N30°38'16\"W 693.20' from the Top of Hole

THIS IS TO CERTIFY THAT THE ABOVE PLAT WAS
PREPARED FROM FIELD NOTES OF SURVEYS
MADE BY ME OR UNDER MY SUPERVISION. THE
LOCATION HAS BEEN STAKED ON THE GROUND AS
SHOWN ON THE PLAT, AND THAT THE SAME ARE
TRUE AND CORRECT TO THE BEST OF MY
KNOWLEDGE AND BELIEF.

07-18-14
30125
REGISTERED LAND SURVEYOR
REGISTRATION NO. 2500
STATE OF COLORADO

◆ = SECTION CORNERS LOCATED

BASIS OF ELEV; U.S.G.S. 7-1/2 min
QUAD (Rockvale)

NAD 83 (SURFACE LOCATION)	
LATITUDE	= 38°18'43.82\" (38.312172°)
LONGITUDE	= 105°08'50.05\" (105.147236°)
NAD 83 (TOP OF PRODUCING ZONE)	
LATITUDE	= 38°18'46.29\" (38.312860°)
LONGITUDE	= 105°08'51.91\" (105.147753°)
NAD 83 (BOTTOM HOLE LOCATION)	
LATITUDE	= 38°18'49.71\" (38.313810°)
LONGITUDE	= 105°08'54.48\" (105.148467°)

TRI STATE LAND SURVEYING & CONSULTING

180 NORTH VERNAL AVE. - VERNAL, UTAH 84078
(435) 781-2501

DATE SURVEYED: 07-16-14	SURVEYED BY: M.P.	SHEET 1
DATE DRAWN: 07-02-14	DRAWN BY: L.C.S.	
REVISED: 07-18-14 M.W.	SCALE: 1\" = 1000'	