



RESERVOIR PERFORMANCE MONITOR

Baker Atlas

File No: CH085886

Company Well WPX ENERGY FEDERAL PA 524-16

API No: Field PARACHUTE

County GARFIELD State COLORADO

05045220420000

Location

1 6 6S 95W SHL: 2600' FNL & 1396' FWL SEC 21

PA 22-21 PAD BHL: 1030' FSL & 2326' FWL (SESW) SEC 16

NABORS 673 SEC 16 TWP 6S RGE 95W

Other Services

BOND LOG

Permanent Datum GL Elevation 6030 ft

Log Measured From KB 26 ft Above P. D.

Drill Measured From KELLY BUSHING

Elevations

KB 6056 ft

DF

GL 6030 ft

Date	22/MAY/14	
Run	ONE	
Service Order	US085886J	
Depth Driller	10040 ft	
Depth Logger	10008 ft	
Bottom Logged Interval	9998 ft	
Top Logged Interval	6098 ft	
Time Started	1100	
Time Finished	1630	
Operator Rig Time	5.5 HRS	
Type of Fluid in Hole	WATER	
Fluid Density	NA	
Salinity	NA	
Fluid Level	80 ft	
Logged Cement Top	NA	
Wellhead Pressure	0 psi	
Maximum Hole Deviation	NA	
Nominal Logging Speed	10 fpm	
Maximum Recorded Temperature	260 degF	
Reference Log	BAKER HUGHES BOND LOG	
Reference Log Date	22/MAY/14	
Equipment No.	4271	GRAND UCT
Recorded By	FLORIO RENEAU	
Witnessed By	GRAN JACOBS	

- FOLD HERE

In making interpretations of logs, our employees will give the customer the benefit of their best judgement. But since all interpretations are opinions based on inferences from electrical or other measurements, we cannot, and we do not guarantee the accuracy or correctness of any interpretation. We shall not be liable or responsible for any loss, cost, damages, or expenses whatsoever incurred or sustained by the customer resulting from any interpretation made by any of our employees.

Borehole Record		
Bit Size	From	To
13.5 in	26 ft	1171 ft
8.75 in	1171 ft	10040 ft

Casing Record				
Size	Weight	Grade	From	To
9.625 in			26 ft	1171 ft
4.5 in	11.6 lbm/ft	I-80	26 ft	10040 ft

Remarks
All data on this log is shifted and depth matched using the Gamma Ray curve to the Baker Hughes bond log dated 5/22/2014 at the client's request.
The amount of linear shift is 13 feet.
Logged in PNC-3D mode.
BHT = 260 °F
SJ = 6400' -6420'

Equipment Data					
Run	Trip	Tool	Series Number	Serial Number	Position
1	1	TEMP	8255XA	11774568	
1	1	RPM	8281FA	10191667	
1	1	RPM	8281PA	10169251	
1	1	RPM	8281EA	10169250	
1	1	GR	2812LA	10274382	
1	1	TEL/CCL	8248ED	10460262	
1	1	PCM	8250EA	10586851	

MAIN SECTION
PNC 3-D MODE

SPL PROCESSING

MEASUREMENT TYPE	PARAMETER	VALUE	UNITS	TOP	BOTTOM
PNC Porosity	Borehole	Cased		6082.885	10011.980
PNC Porosity	Borehole Size	8.750	inch	6082.885	10011.980
PNC Porosity	Casing Size	4.500	inch	6082.885	10011.980
PNC Porosity	Gas Filled	Non Gas Filled		6082.885	10011.980
PNC Porosity	Matrix	Sandstone		6082.885	10011.980
TPS Pressure	Temperature Corr. Source	Fixed (72.00)	degF	6082.885	10011.980

DEPTH OFFSETS
(for Acquired Curves)

SERIES	DEPTH OFFSET	ACQUIRED CURVES
8248ED	-26.519	FLTM
8248ED	-24.519	CCL CHV
2812LA	-21.969	GR
8281XA	-12.702	HVC3Q0 SEQ3 AMA3 AML3 BKX CXS CPT3Q0 CPT3Q2 CPT3Q3 CPT3Q4 ET3 IXS MCS3 MCS3Q0 QCAL3 RGN3 RICX SDA3

8281XA

-12.291

SDL3 SGA3 SGL3 STA3 XS ASPEC3
AMB3 AMF3 CHF3 IXSC IXSN RATO23
RICXC RIN13C RIN23 RIN23C SD3D SG3D
SGB3 SGF3 WDT3 CXSR IXSR XSR
RICXR

HVC2Q0 SEQ2 AMA2 AMB2 AMF2 AML2
BKL CHF2 CLS CPT2Q0 CPT2Q2 CPT2Q3
CPT2Q4 ET2 ILS LS MCS2 MCS2Q0
QCAL2 RGN2 RICL RONE23 RTWO23 SDA2
SDL2 SGA2 SGB2 SGF2 SGK2 SGL2
STA2 ASPEC2 ILSC ILSN WDT2 RICLC
CLSR ILSR LSR RICLR

8281XA

-12.041

CPRS HVC1Q0 MV SEQ SEQ1 AMA1
AMB1 AME1 AMF1 AML1 BKS CHF1
CSS CORB CORF CPT1Q0 CPT1Q2 CPT1Q2A
CPT1Q2B CPT1Q2C CPT1Q3 CPT1Q4 CPT1Q5 ET1
G1 G2 GE1S GE2S ISS MCS1
MCS1Q0 QA1 QCAL1 QM1 RATO RATO13
RBOR RGN1 RICS RIN RONE RPOR
RTWO RIN13 RONE13 RTWO13 SALB SC1
SDA1 SDL1 SGA1 SGB1 SGBC SGE1
SGF1 SGFC SGK1 SGL1 SS SS2
STA1 PD1S PD2S PD3S MD1S MD2S
MD3S DG1S DG2S DG3S PD1M PD2M
PD3M MD1M MD2M MD3M DG1M DG2M
DG3M MVS MA MVM FILV IAM
TA PVM PVS IAS SSTAT QPD1
QPD2 QPD3 QMD1 QMD2 QMD3 QDG1
QDG2 QDG3 QMA QTA QFILV QMV
QPV QIA DERR DCNT QPK1 QSA1
PKS1 ASPEC1 H0C FE2XC ISSC RINC
ISSN RDEN WDT1 RICSC CSSR G1R
G2R ISSR SSR SS2R RATOR RATO13R
RBORR RICSR RINR RIN13R RONE RPORR
RTWOR

8255XA

-0.792

PTFS PTMS

8255XA

-0.775

SPF1 SPFQ TSCP TSDP

8255XA

0.000

DTEM TEMP TNF

SYSTEM

0.000

TEN TTEN

Created by : RPM9, v5.3.1.0

Plotted by : PlotMgr, v5.4.504

Company : WPX ENERGY

Well : FEDERAL PA 524-16

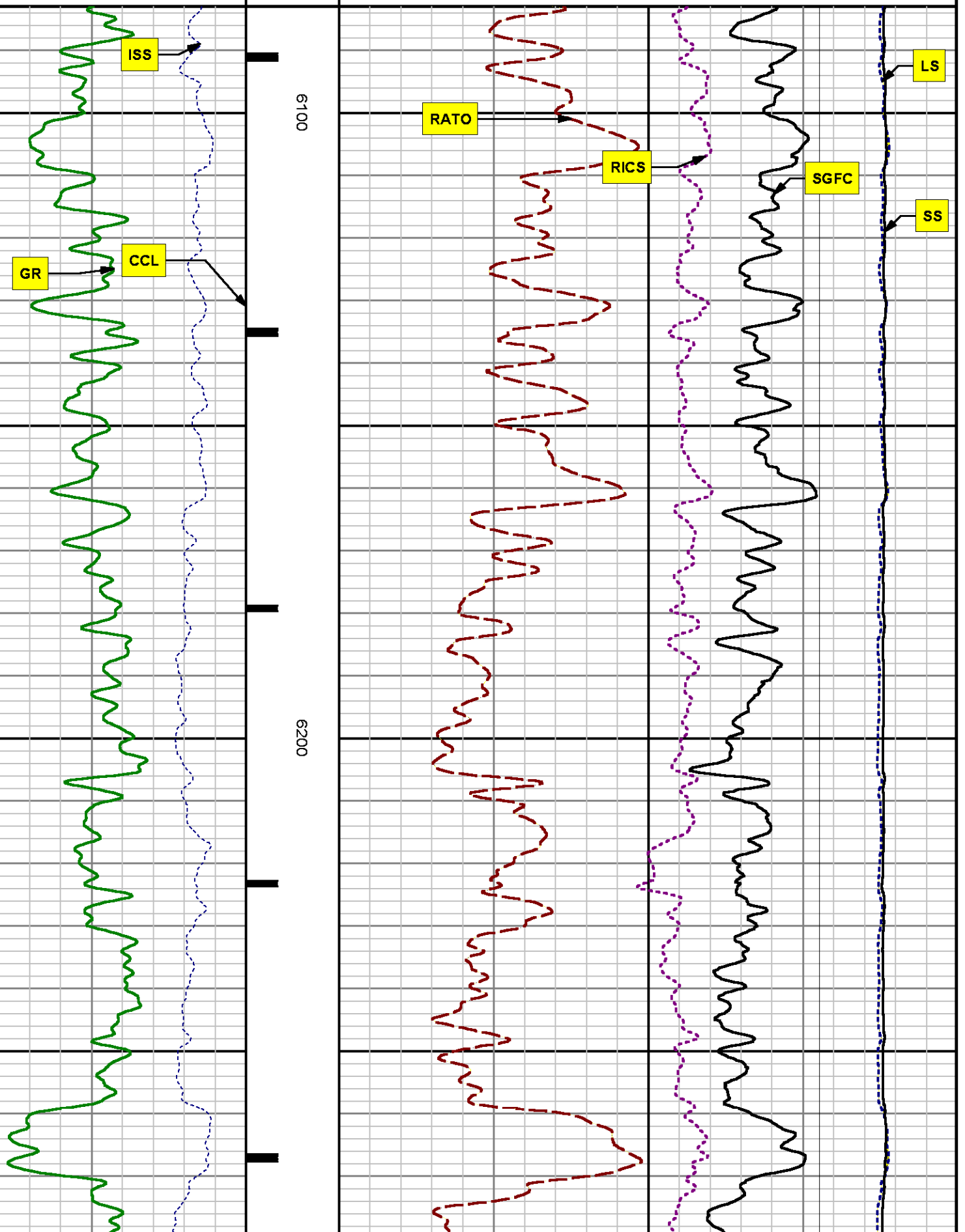
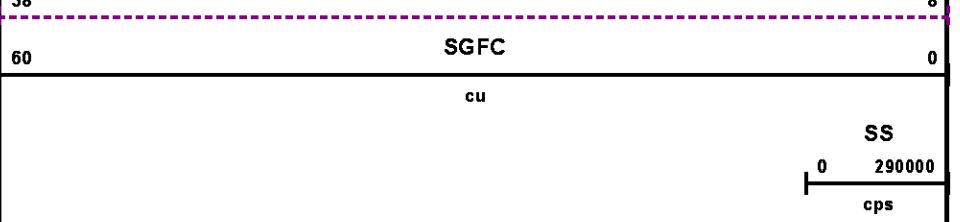
File Name : d:\welldata\wp\pa 524-16\524rpm\main.xtf

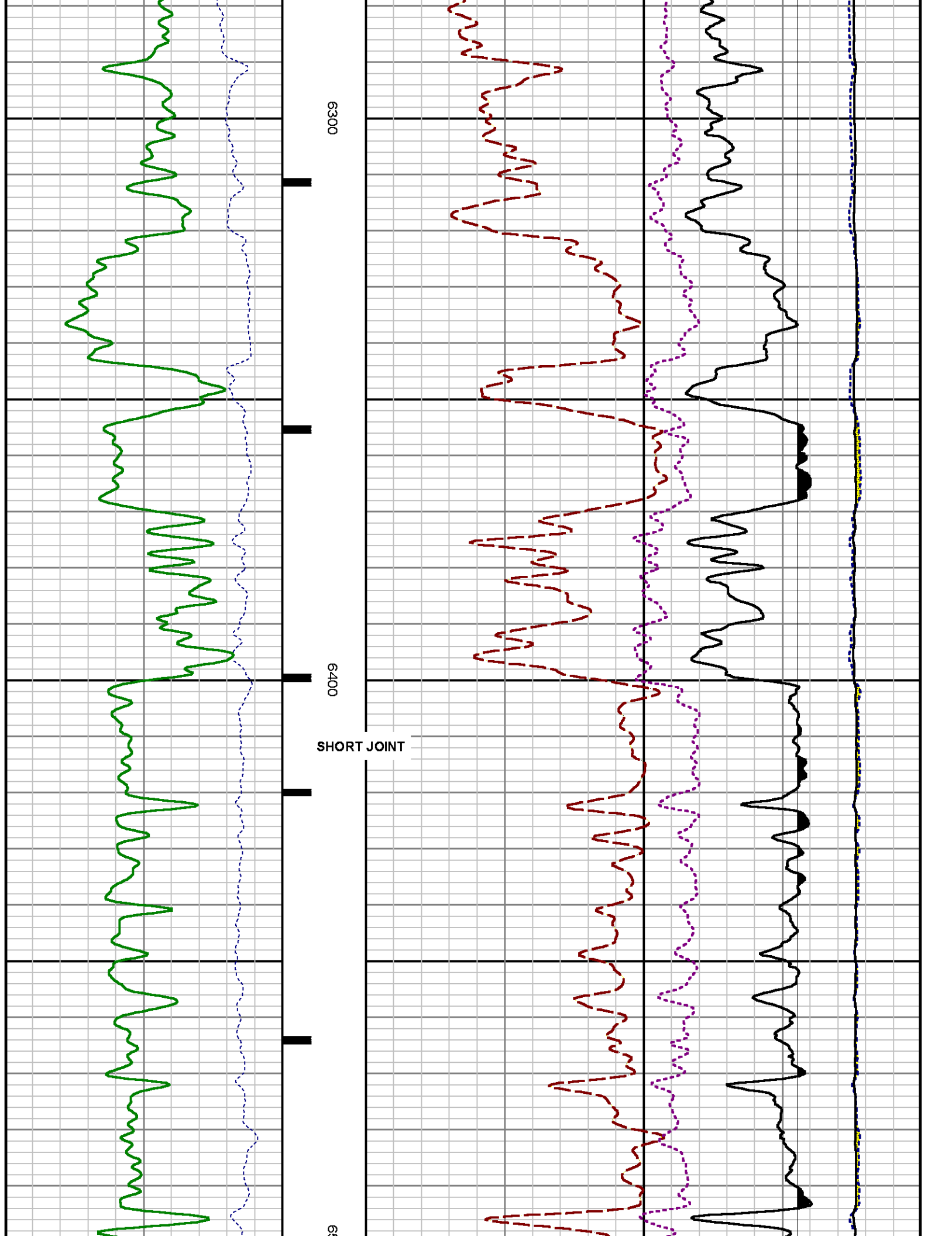
Mode : PlotMgr 5.4.504

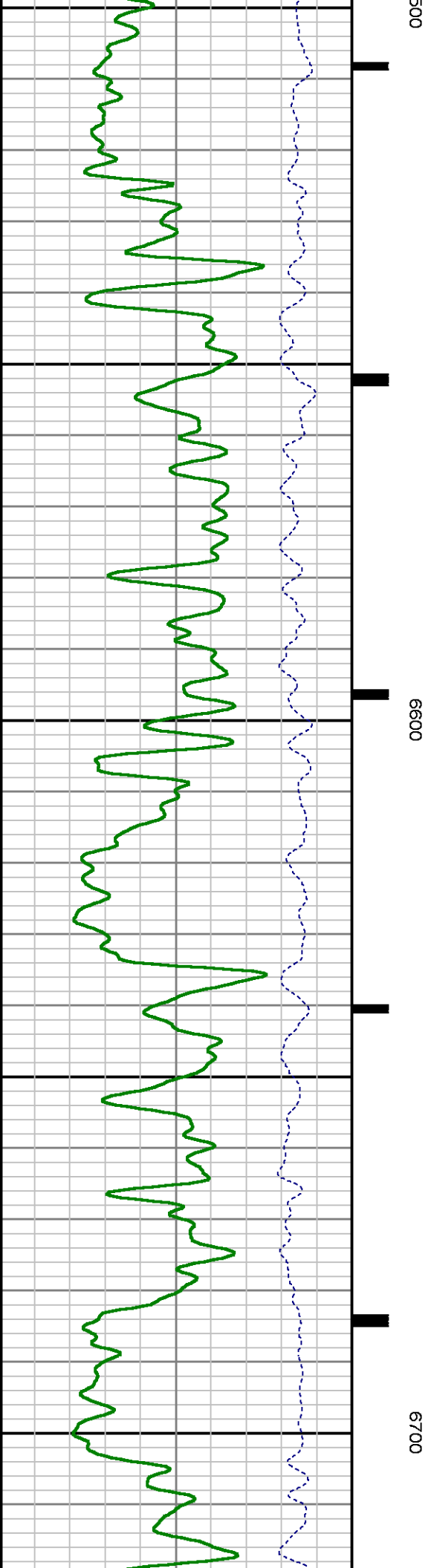
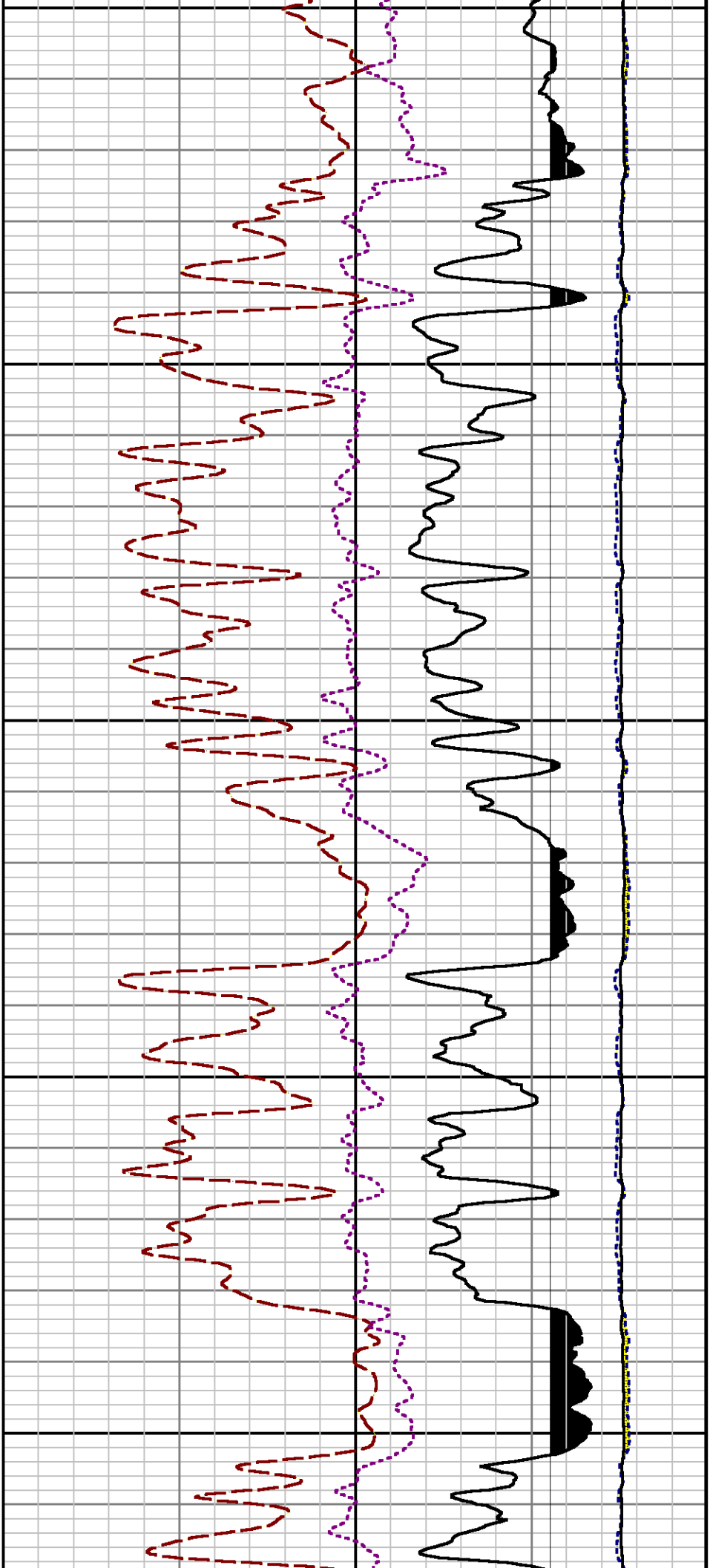
Interval : 6082.98 - 10011.98 feet UP

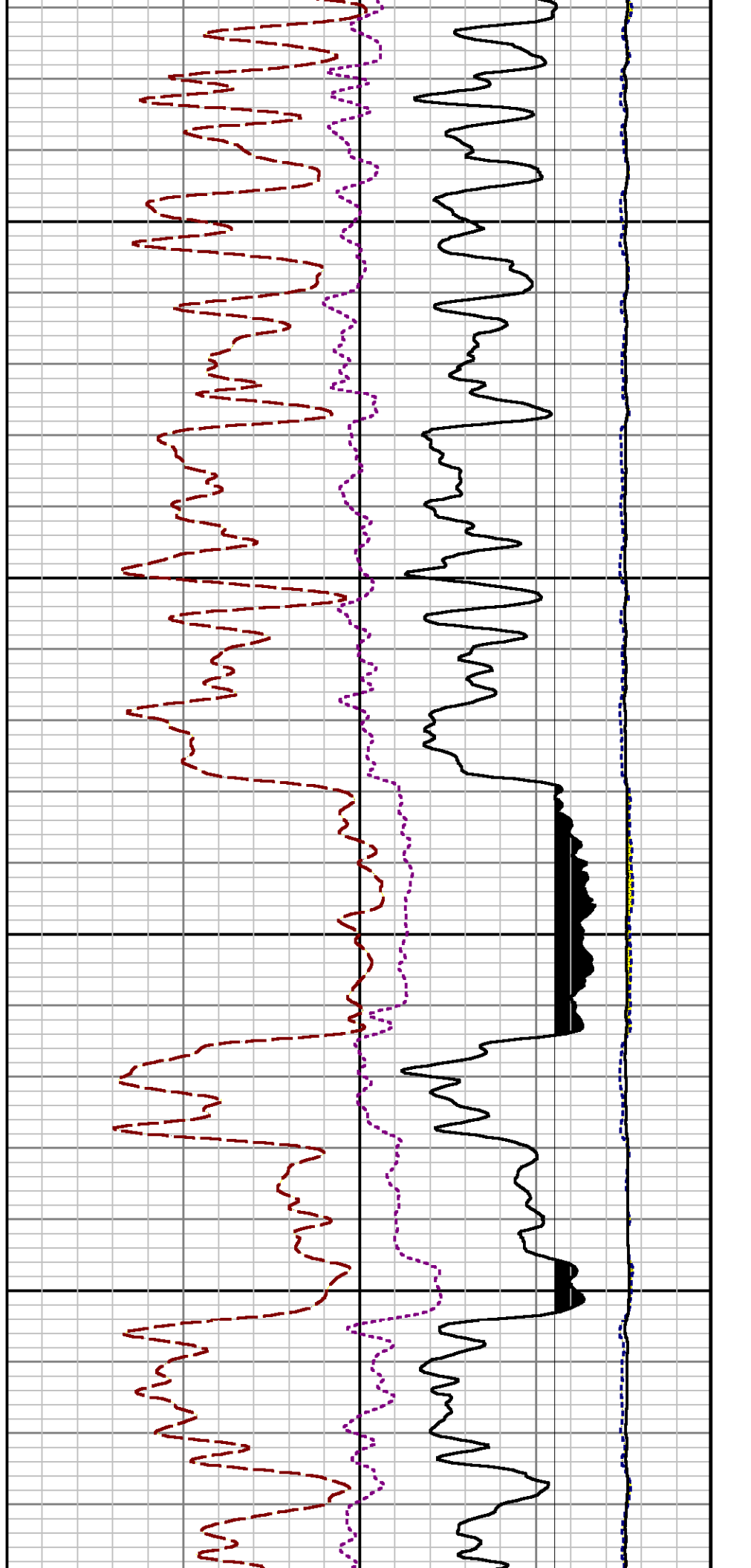
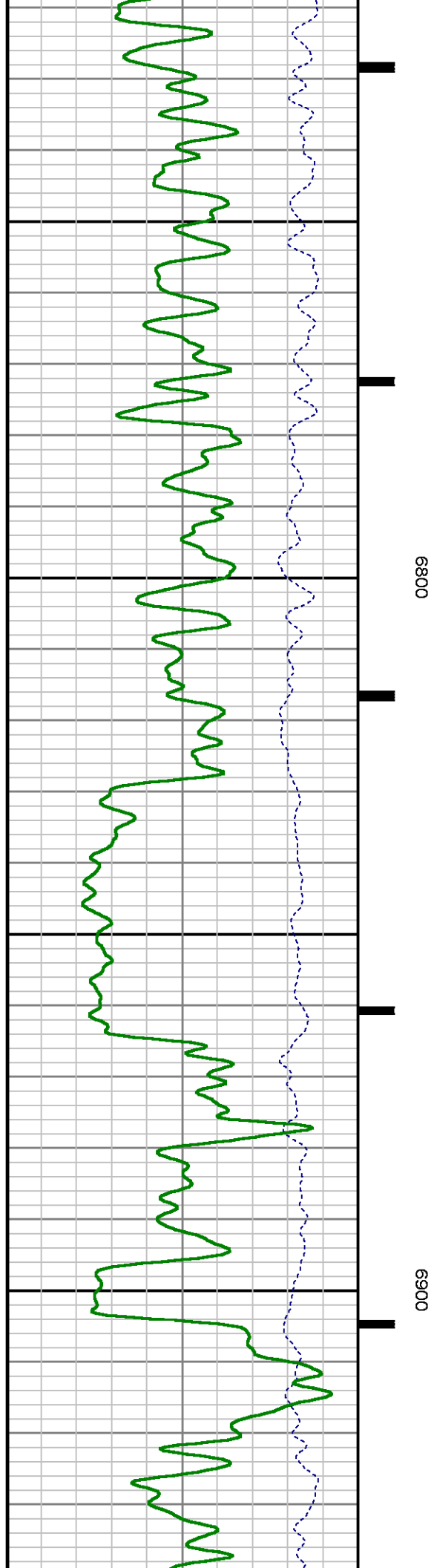
Created : 5/22/2014 12:02:37 PM

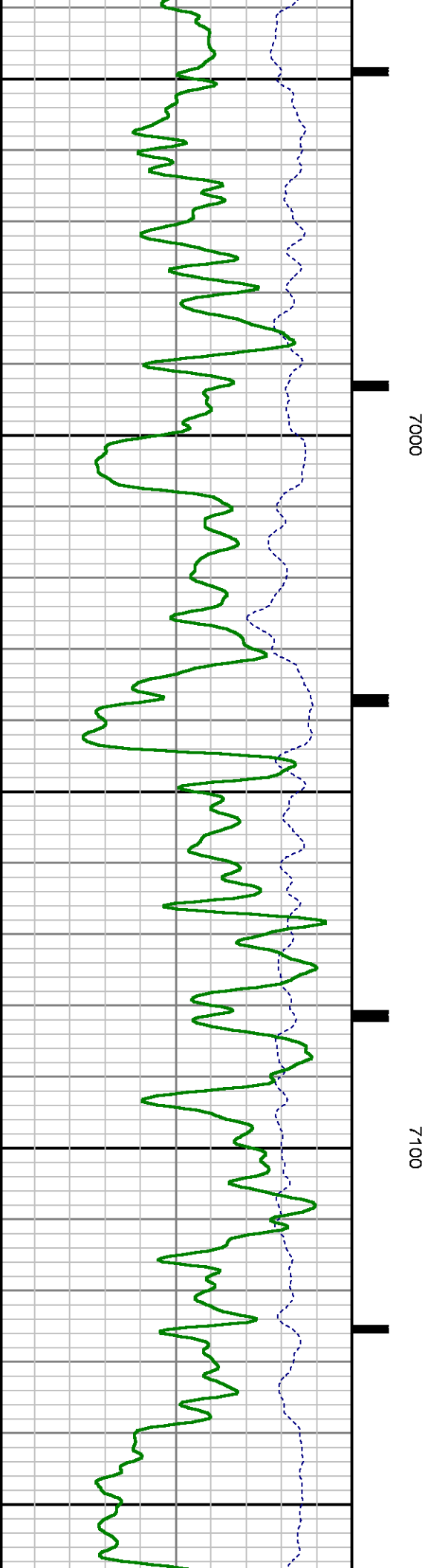
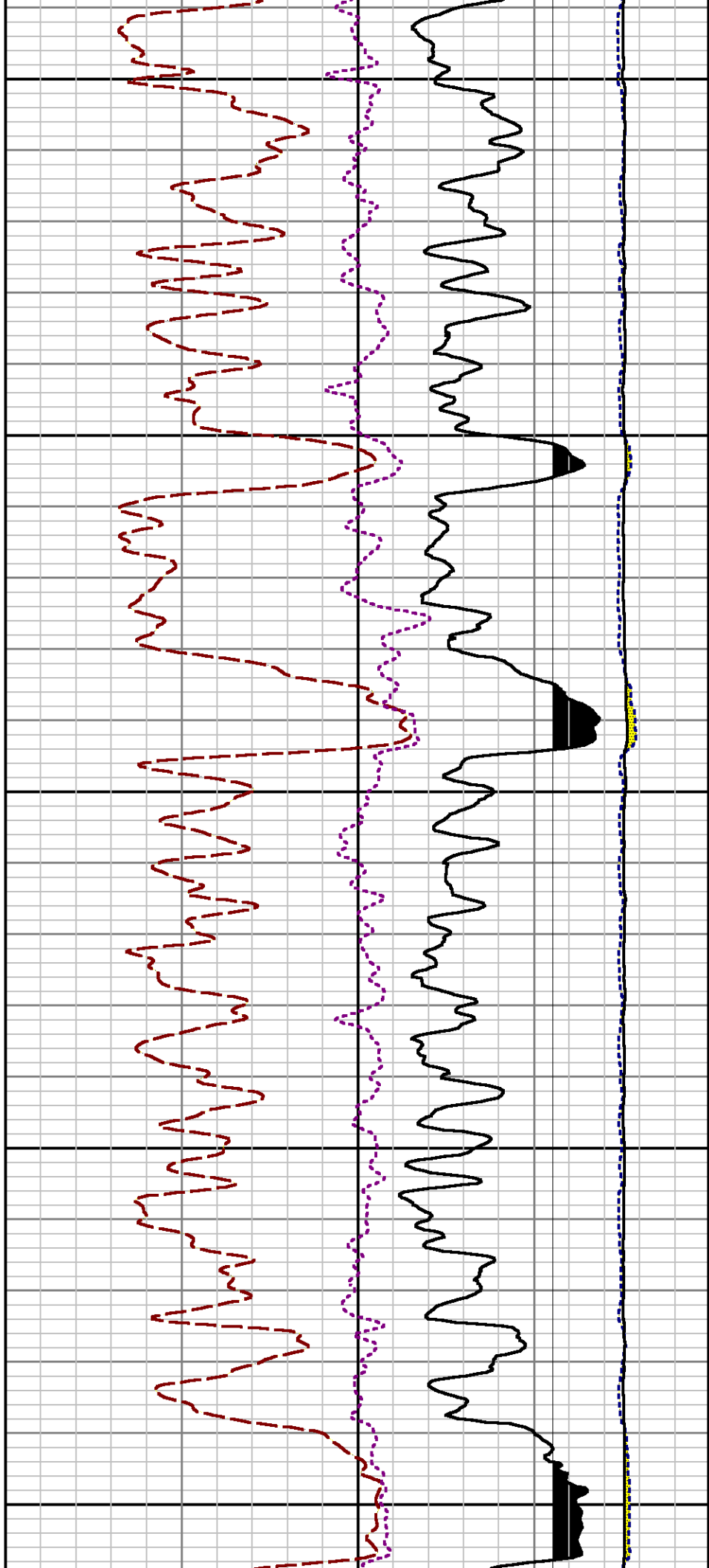


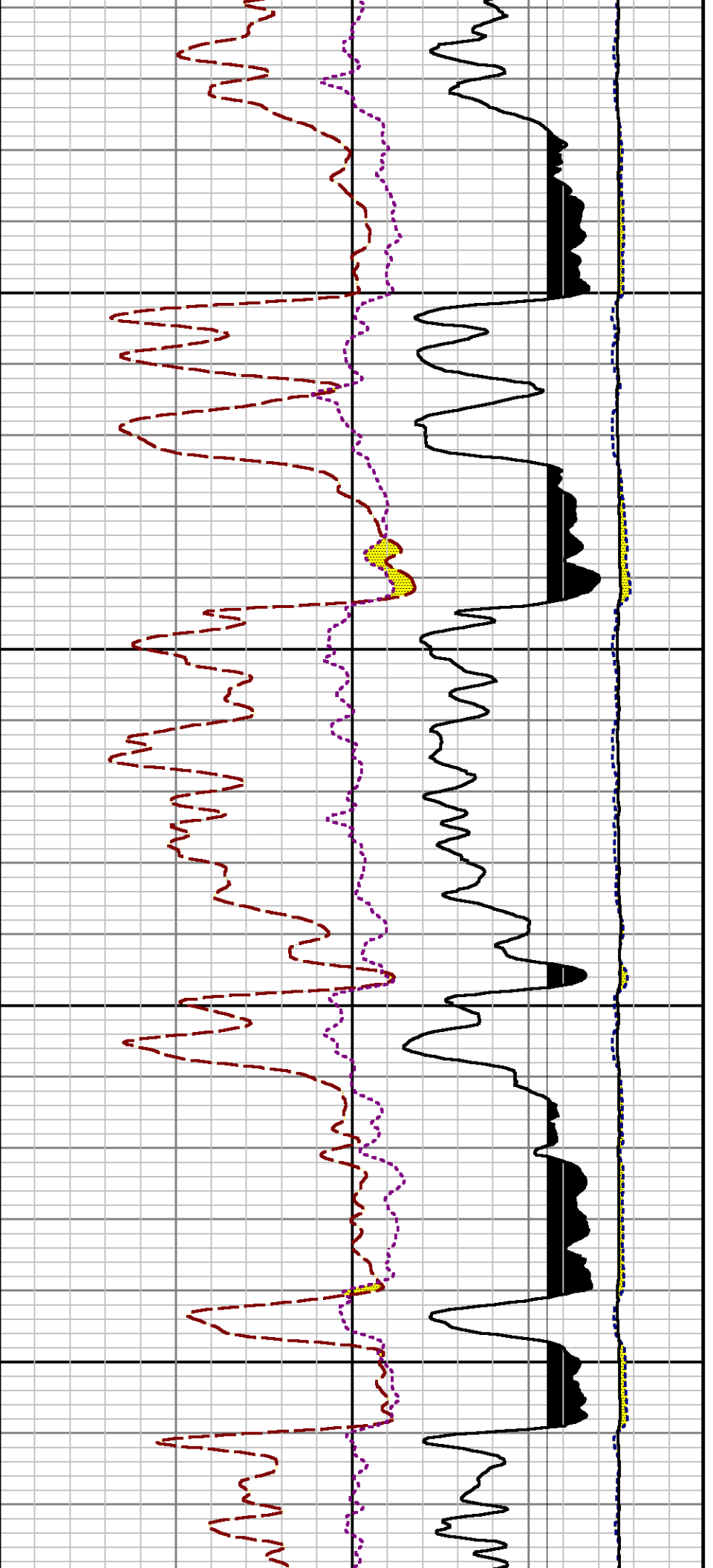






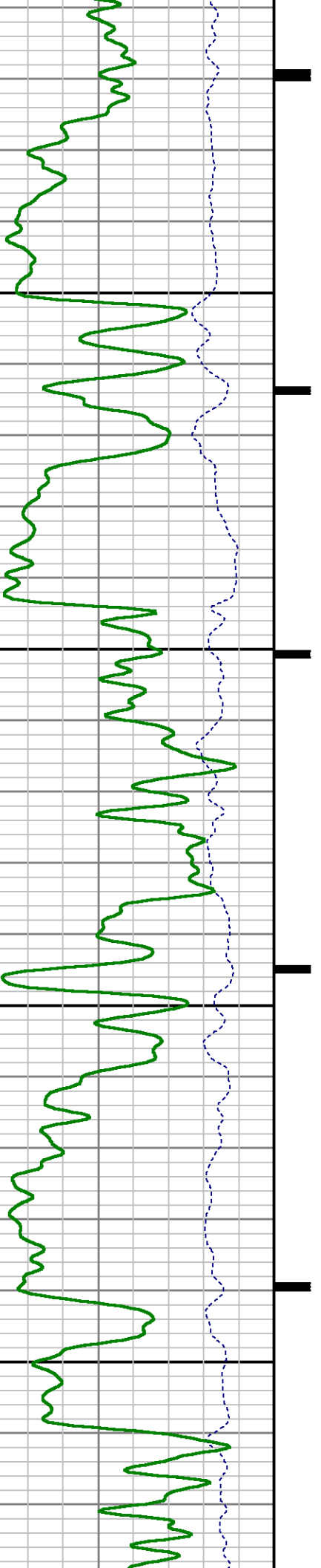


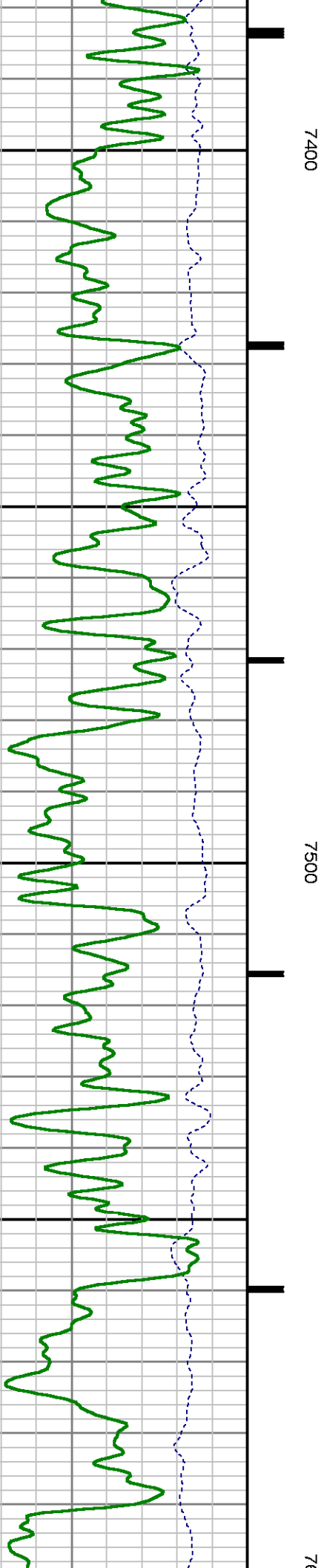
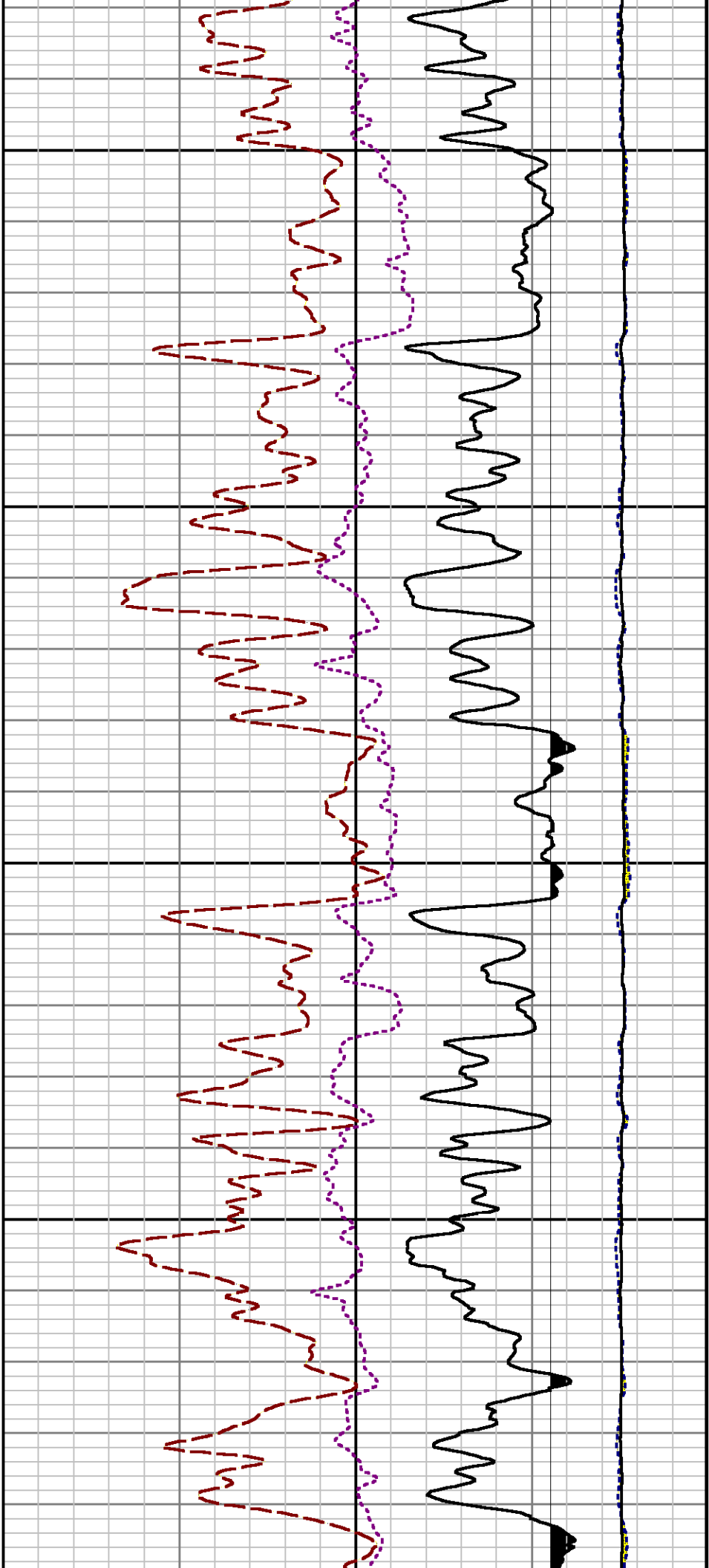


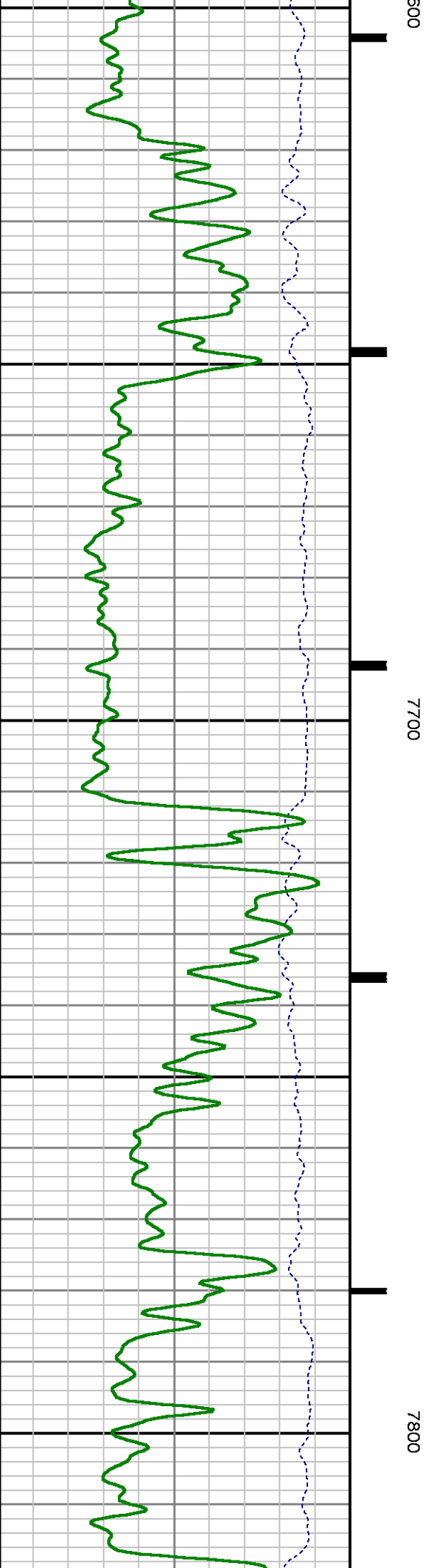
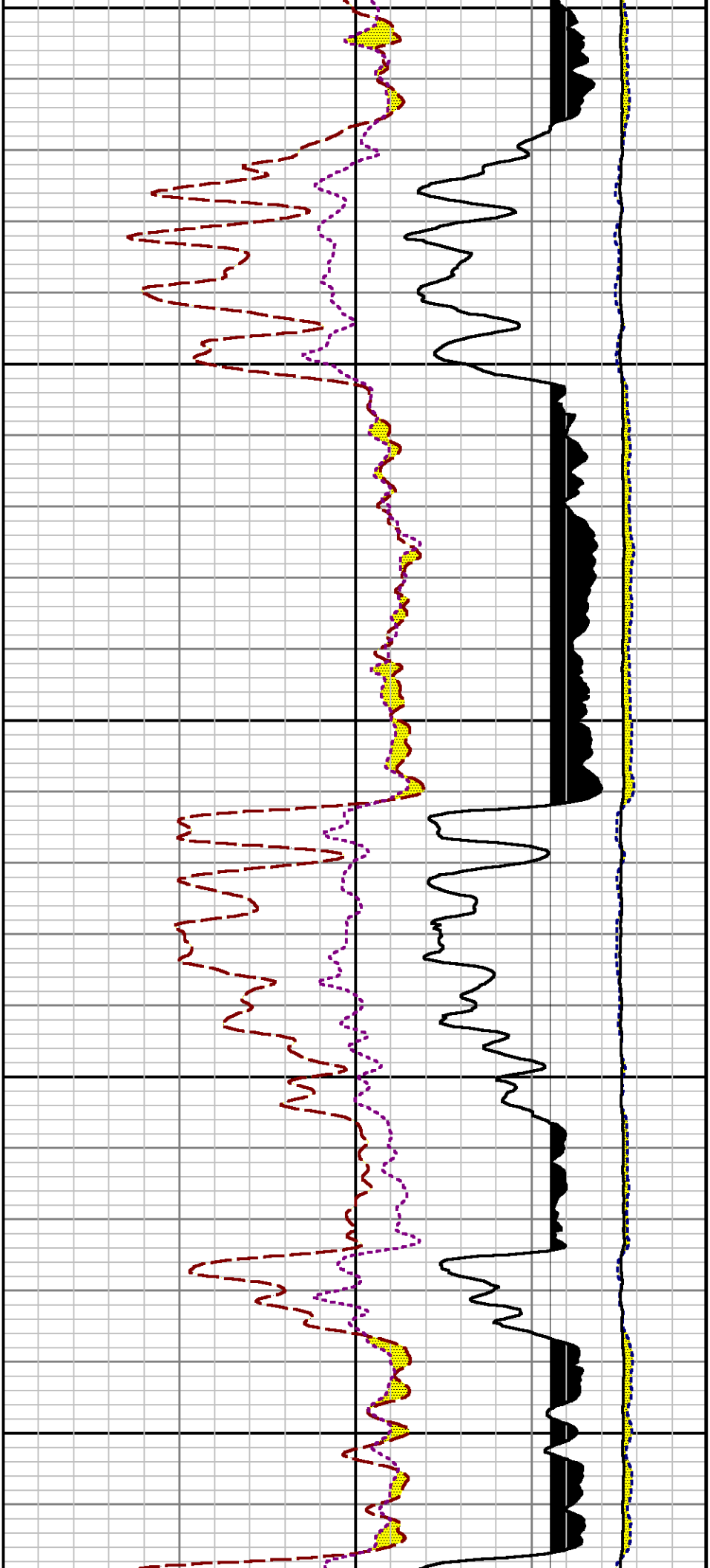


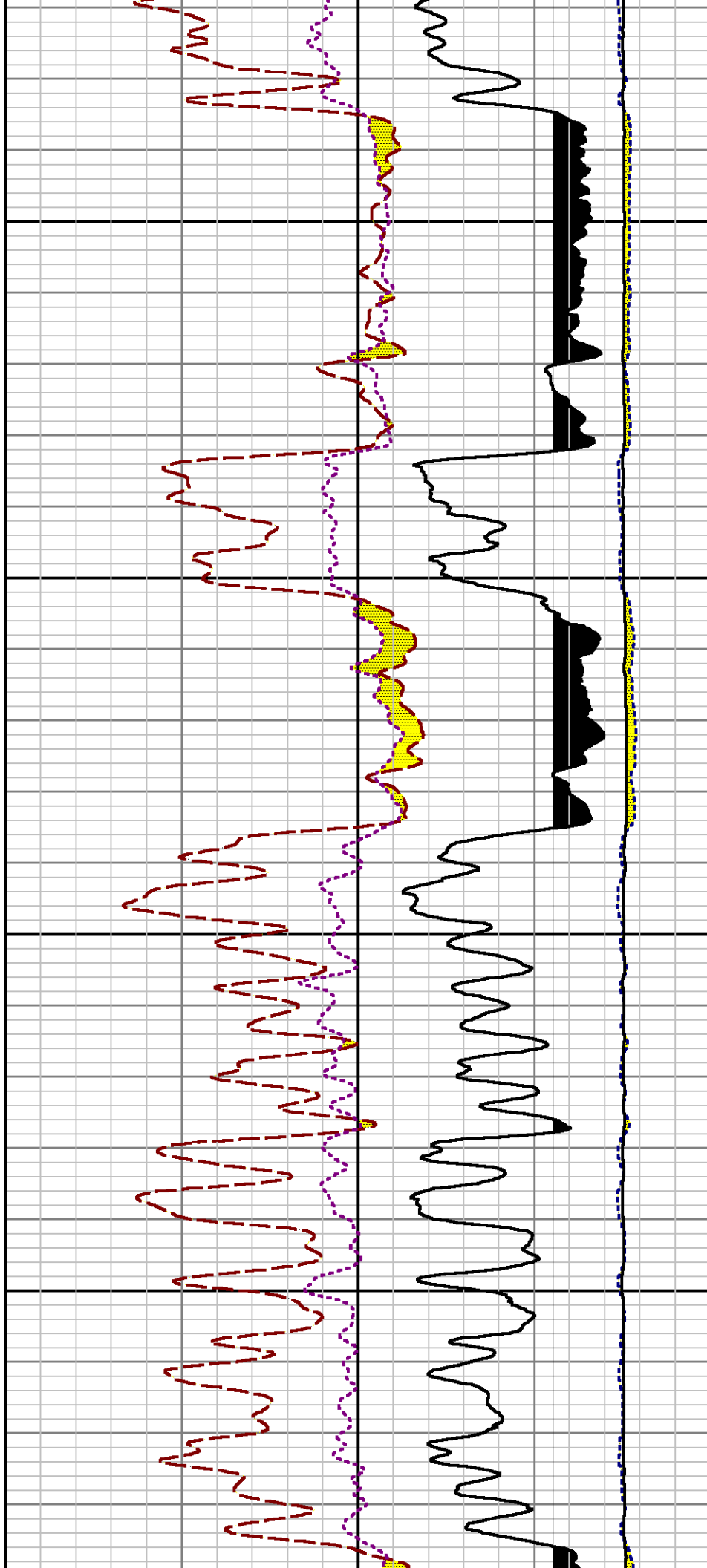
7200

7300



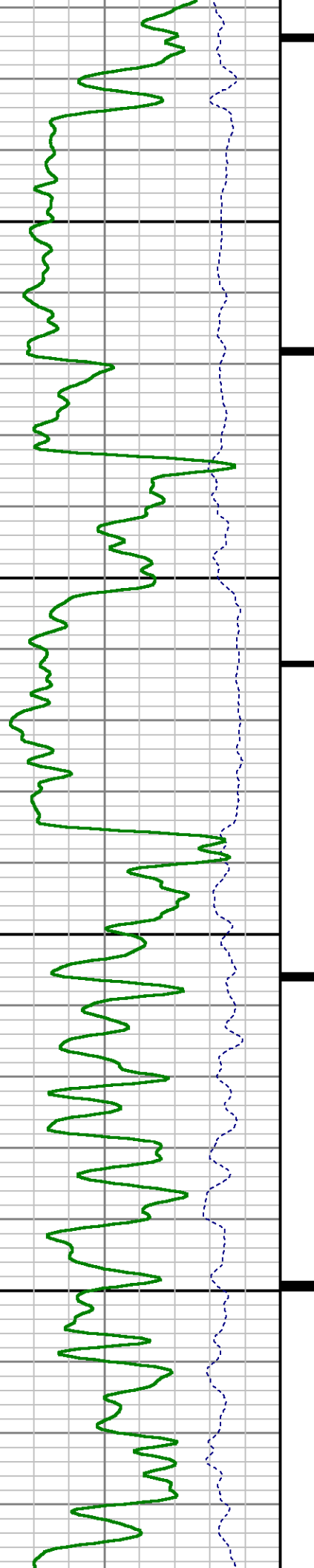


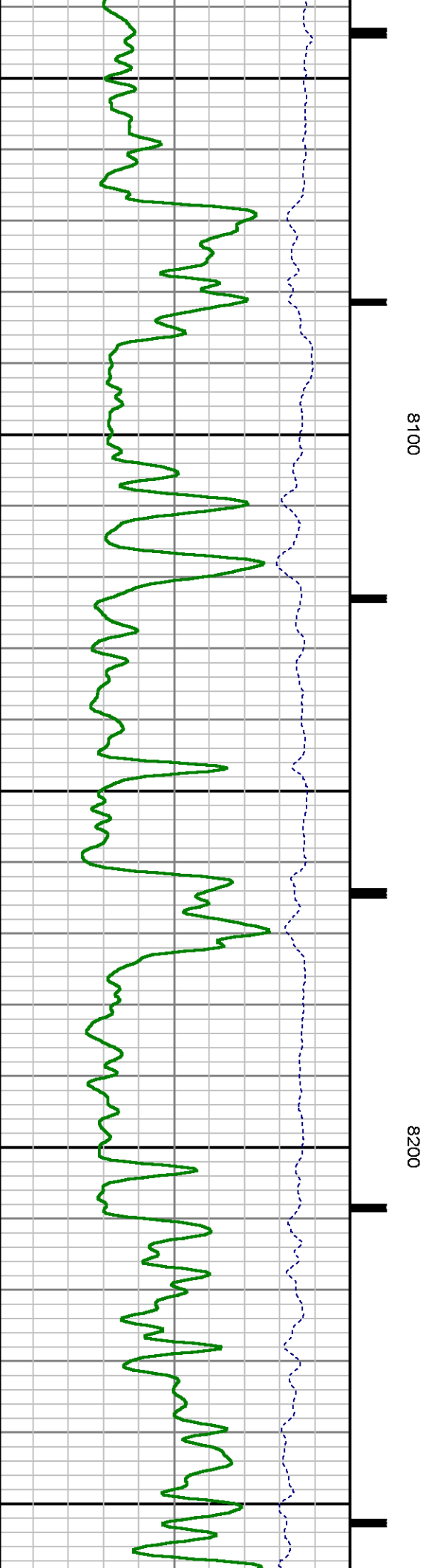
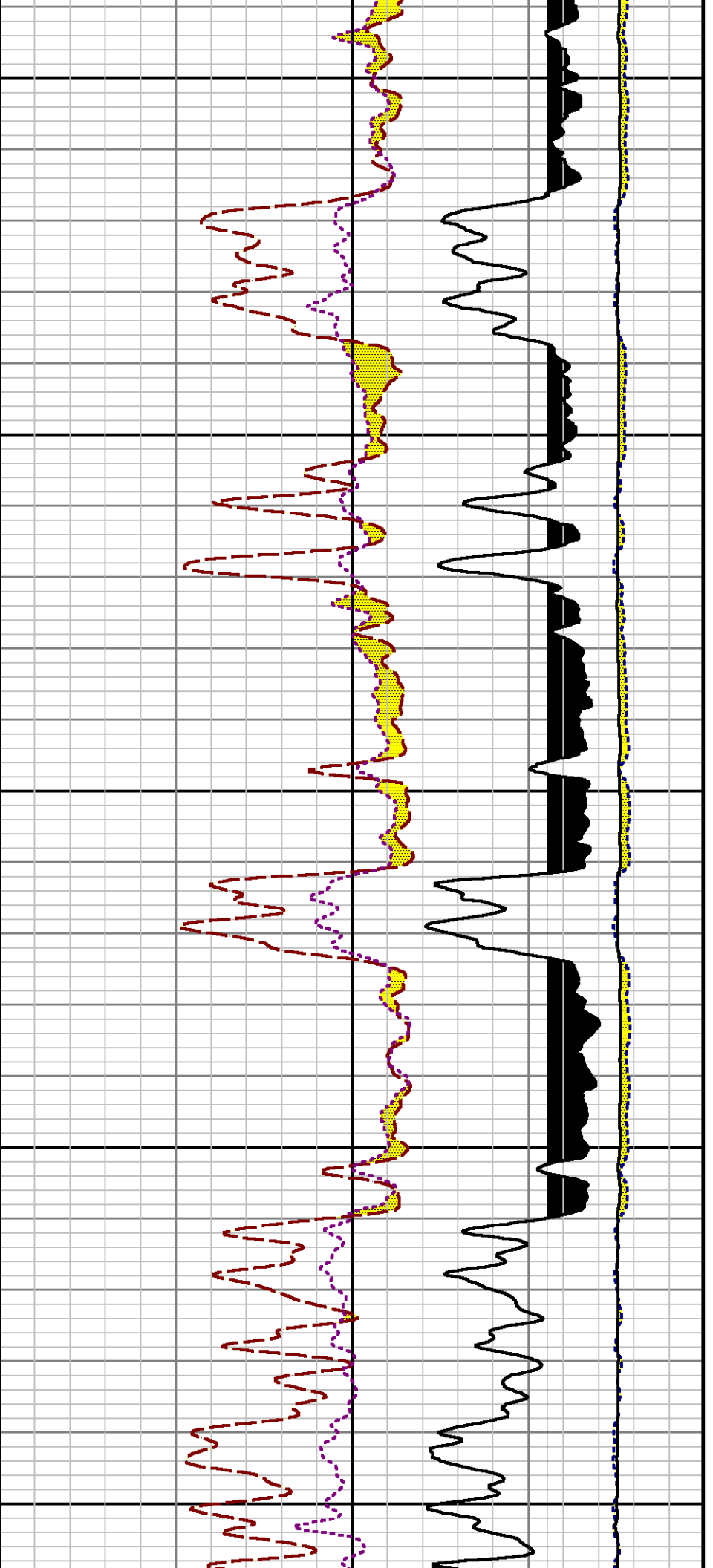


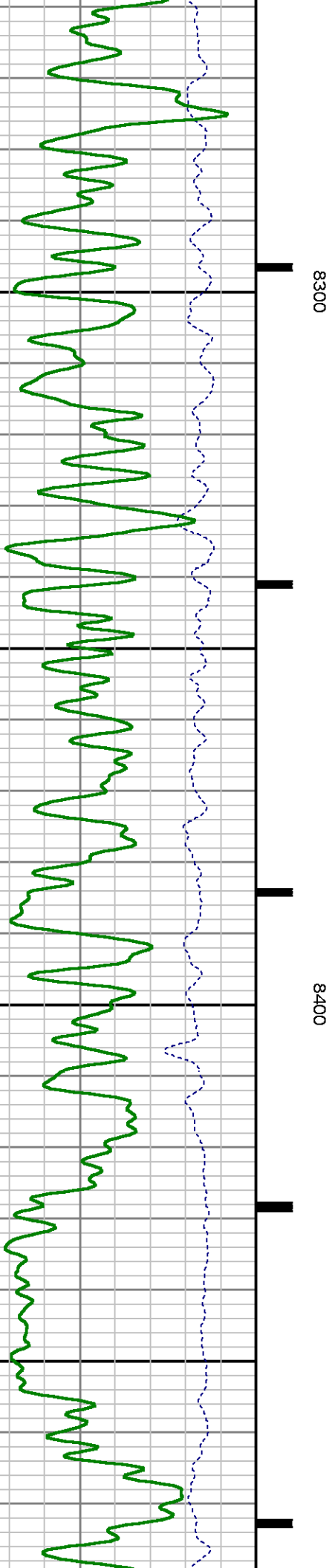
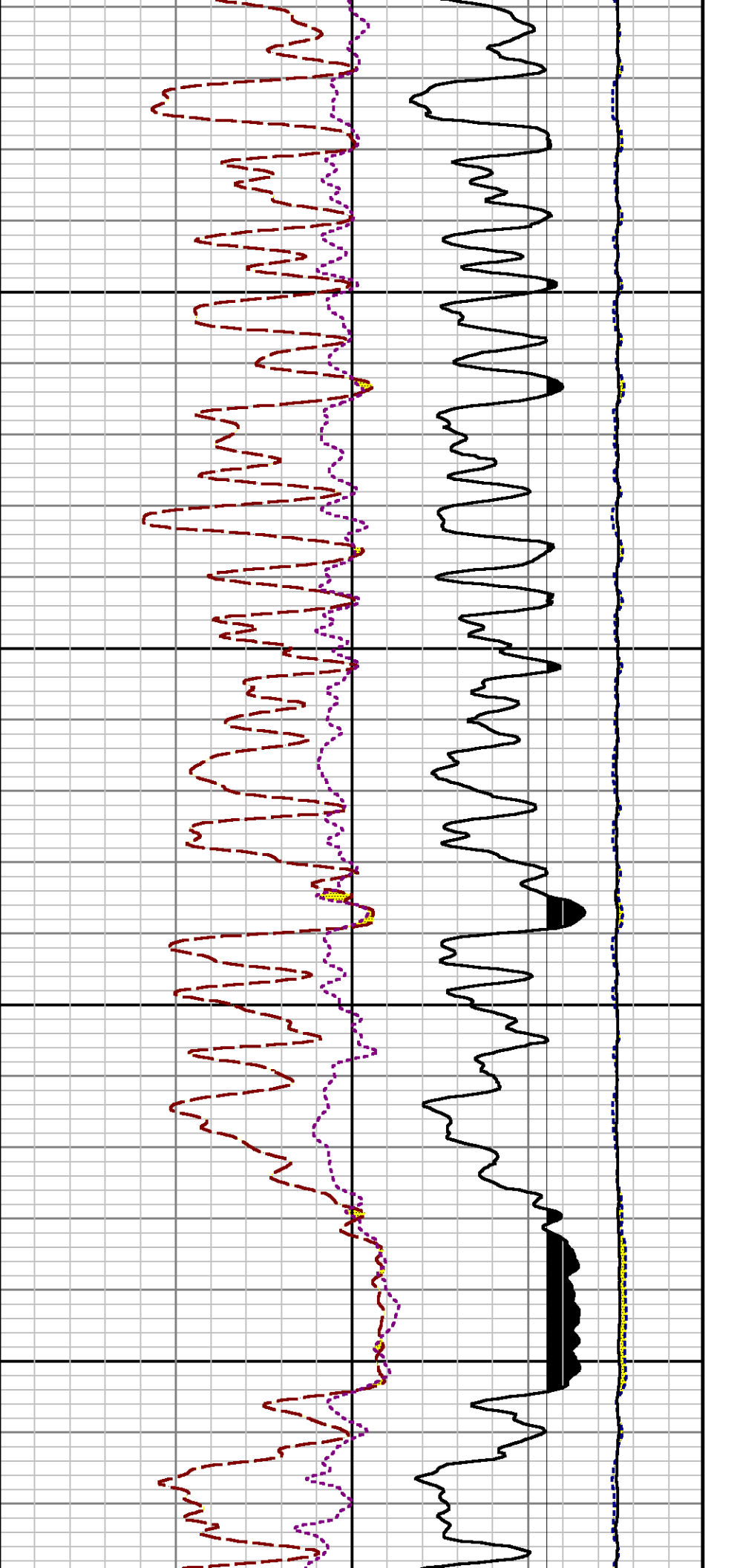


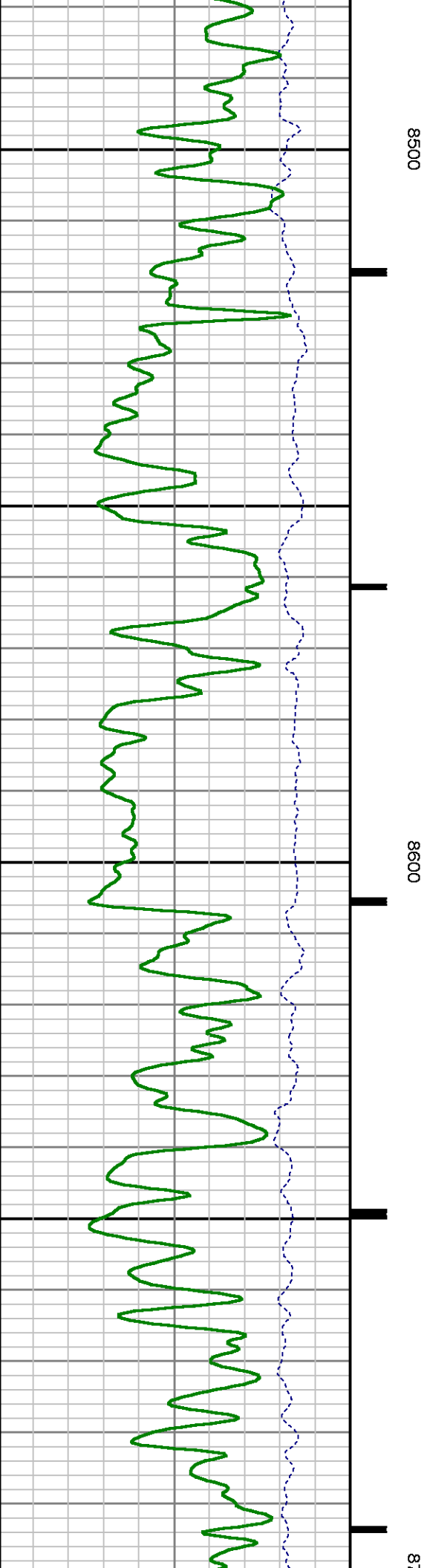
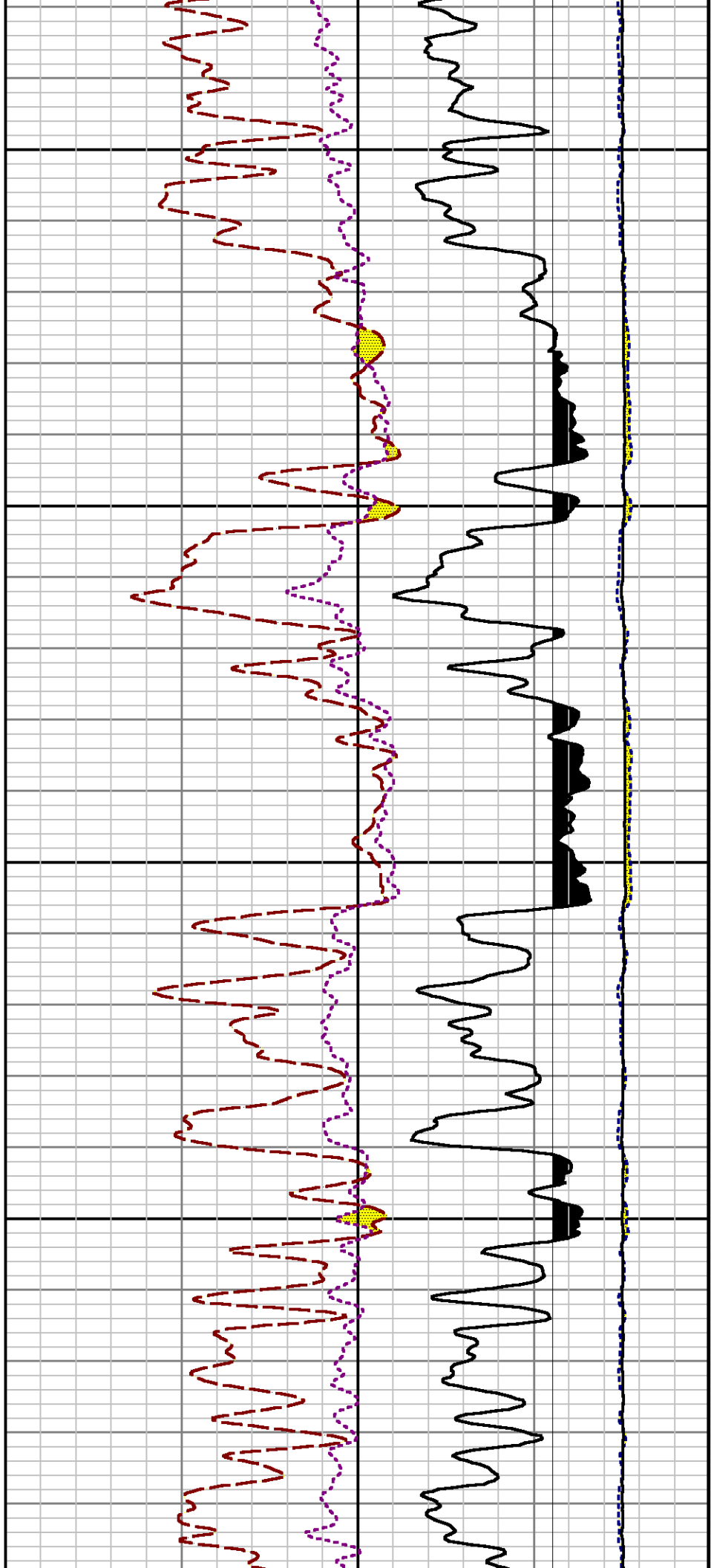
7900

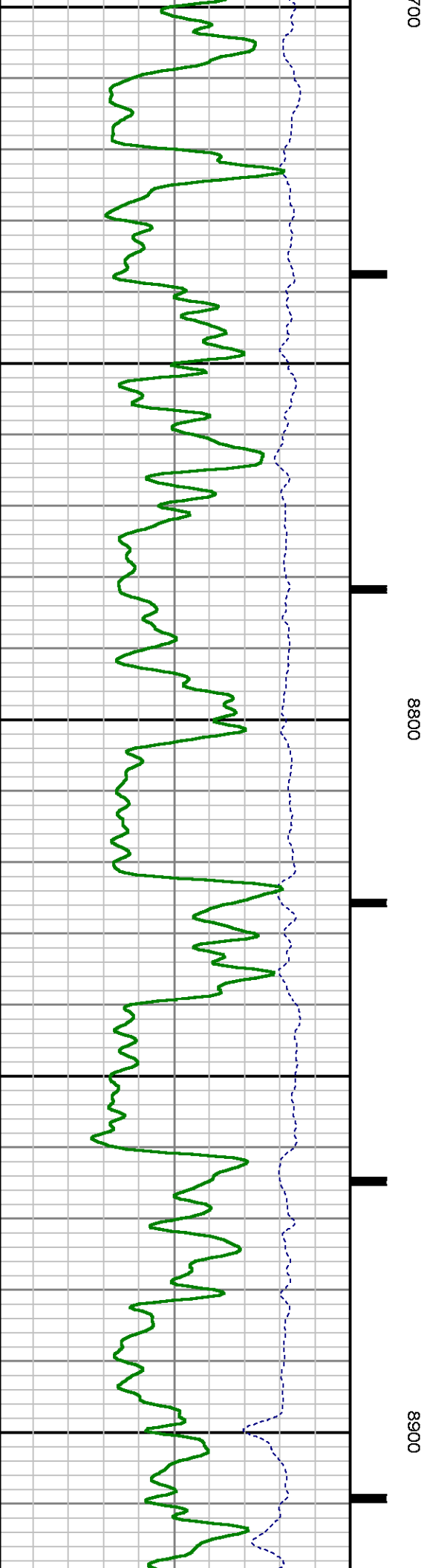
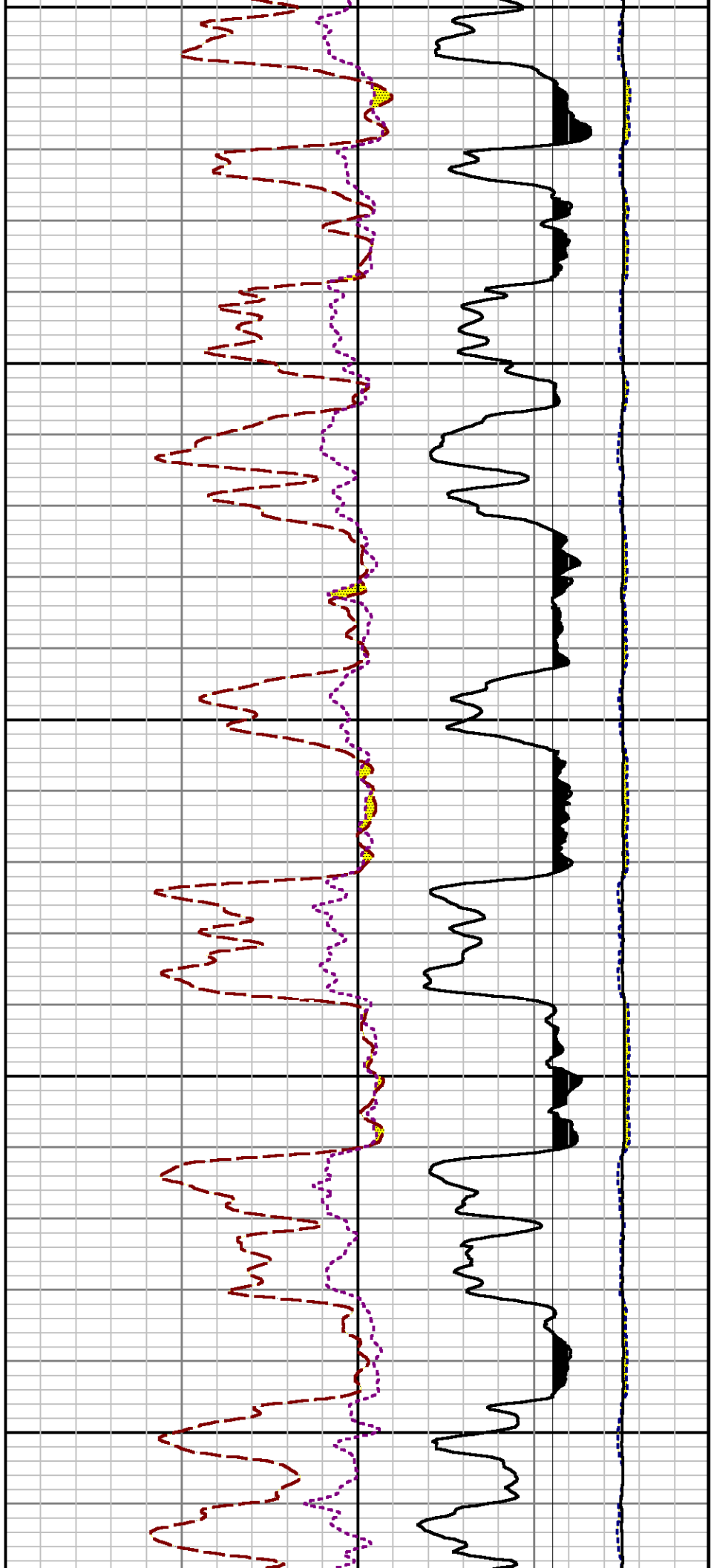
8000

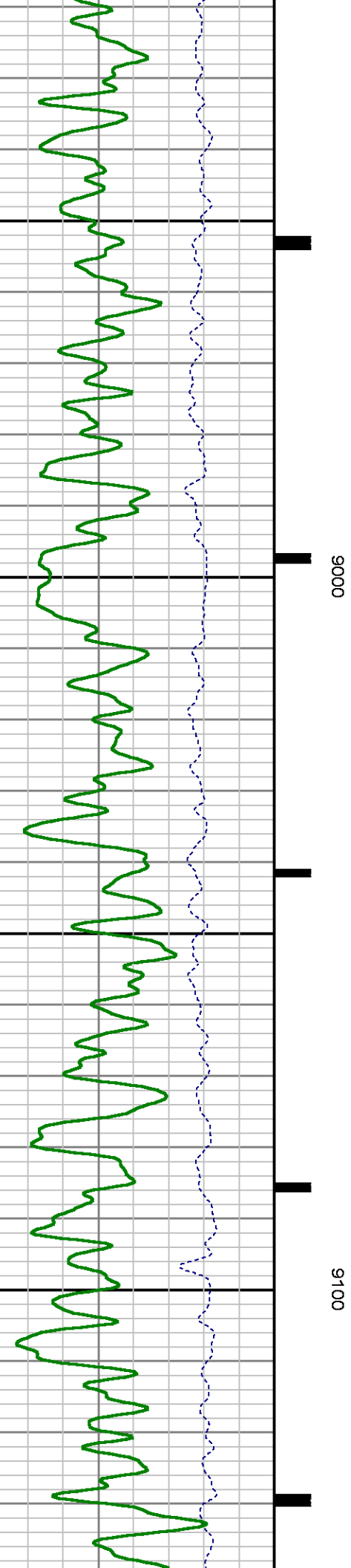
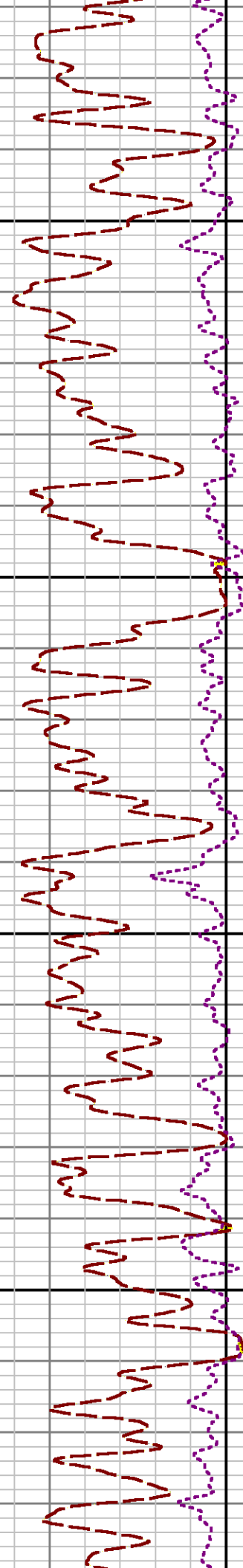
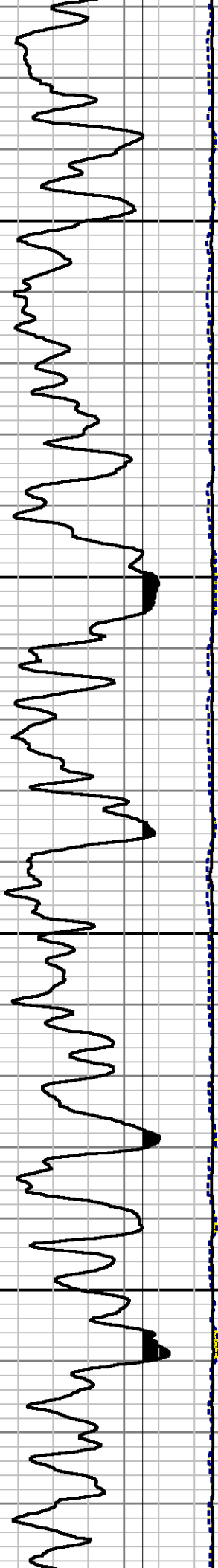


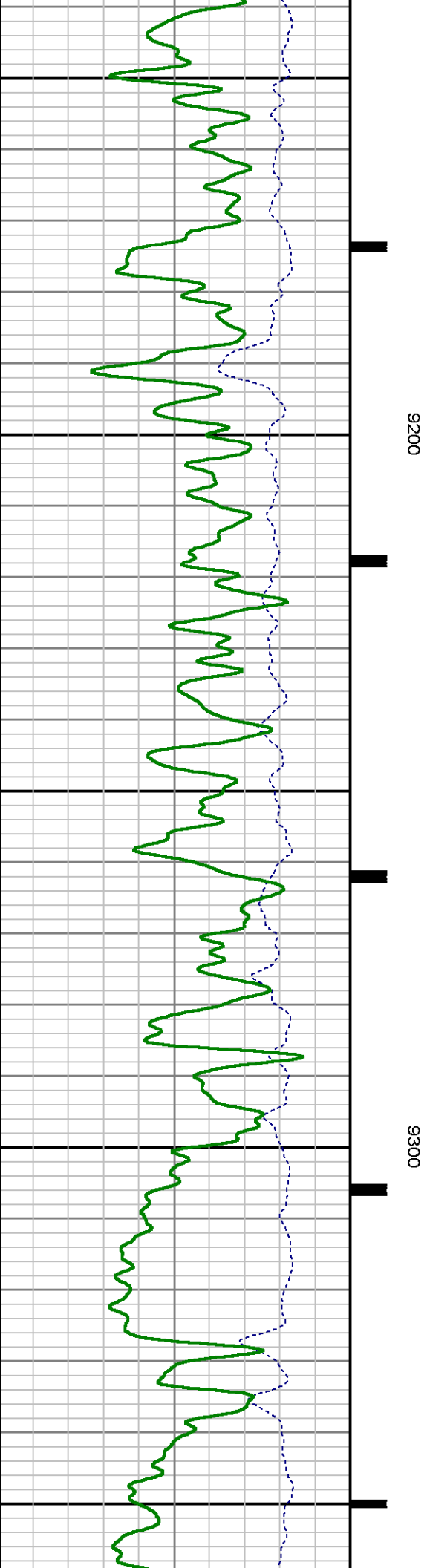
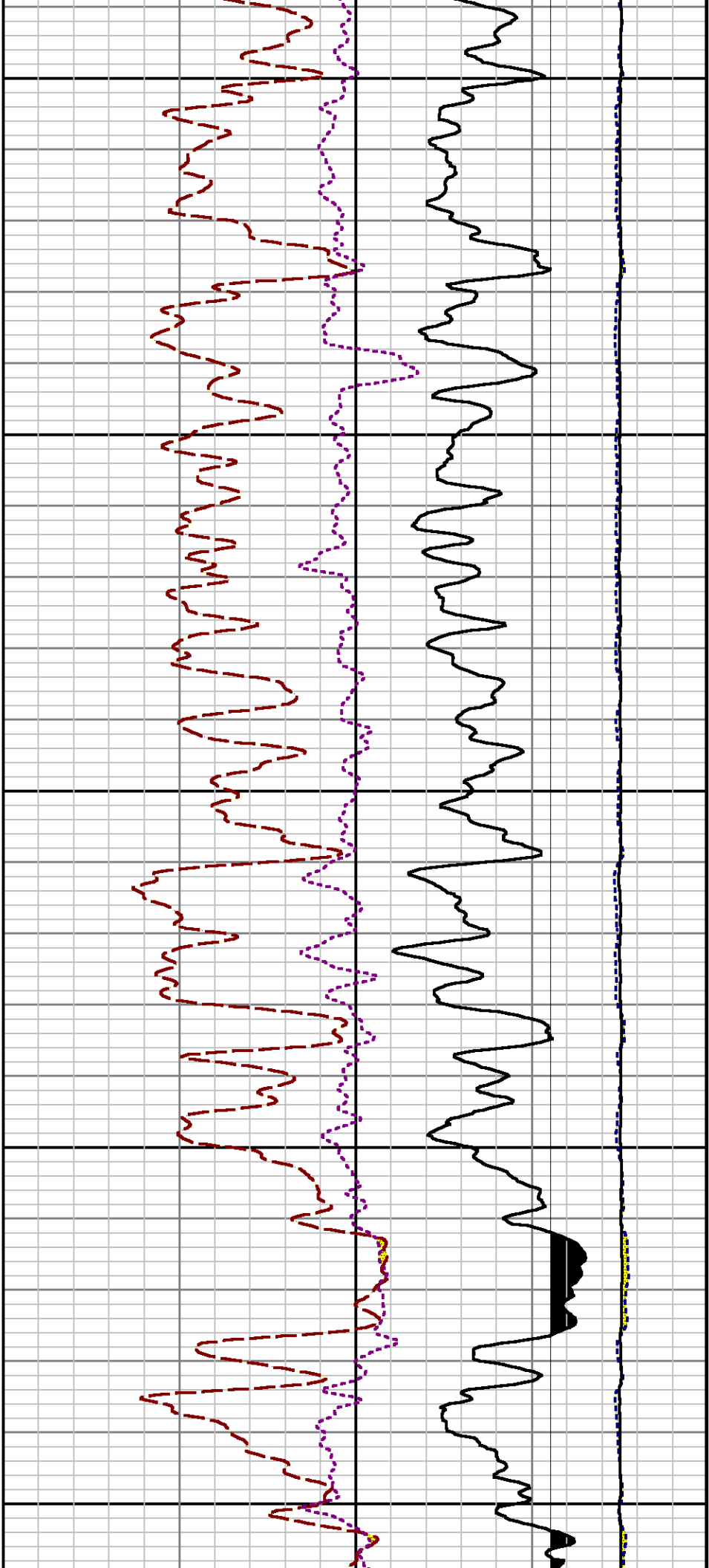


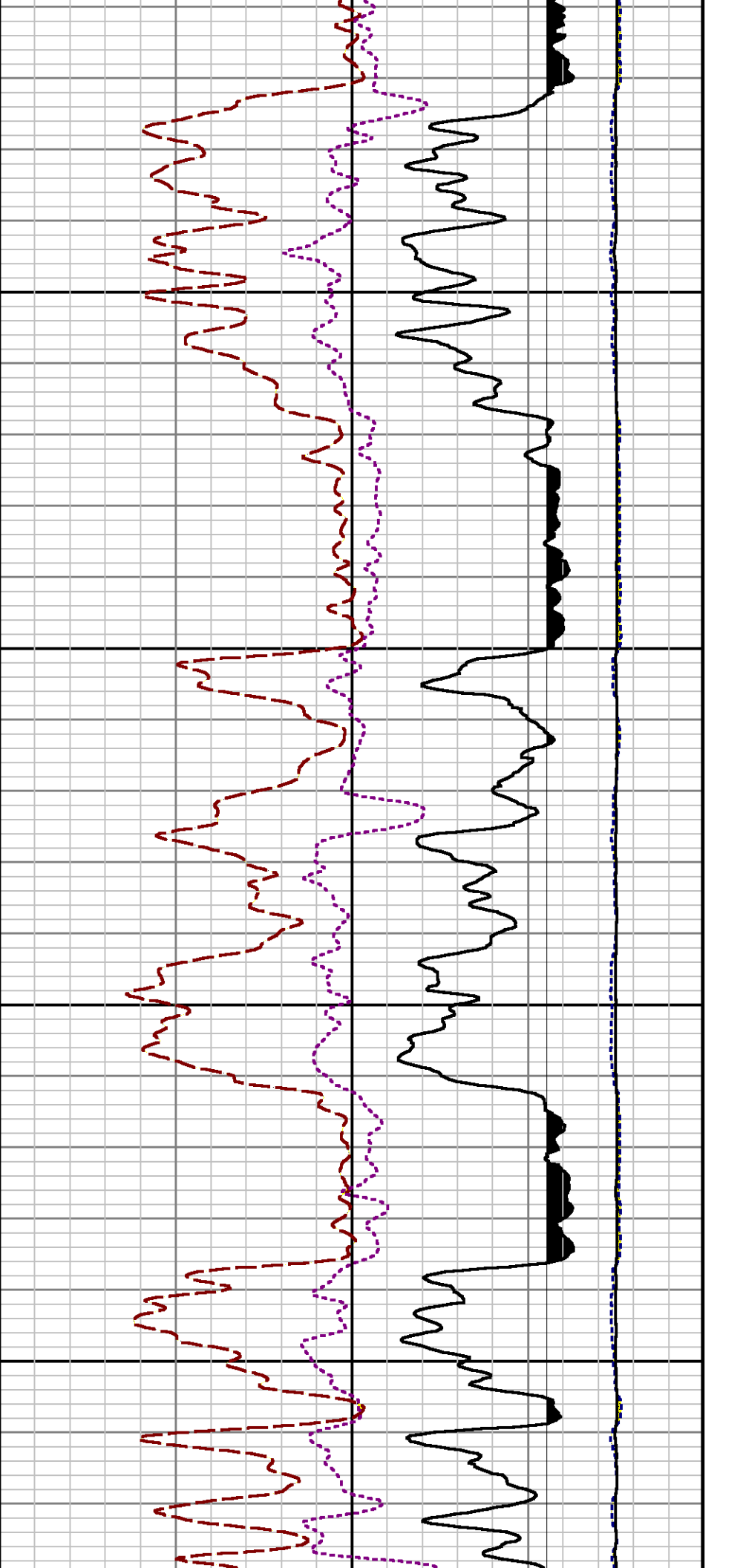






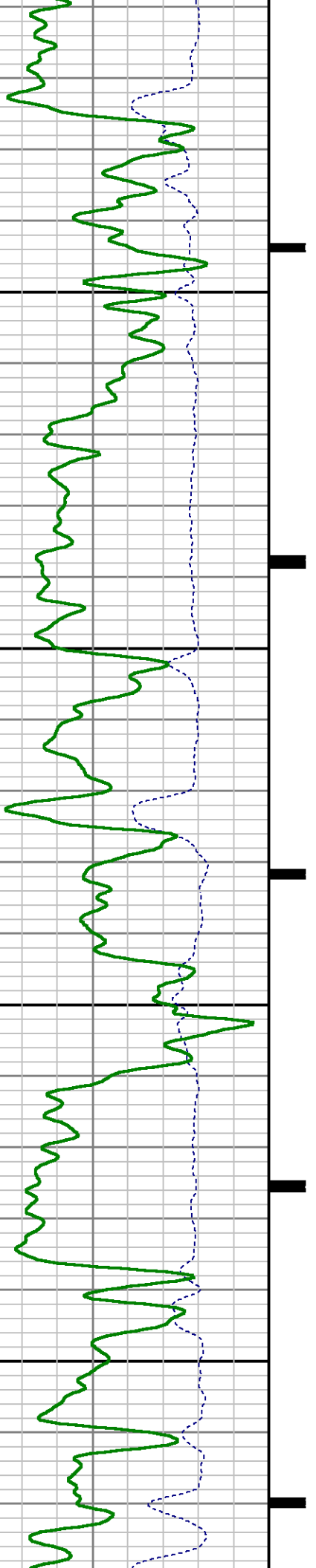


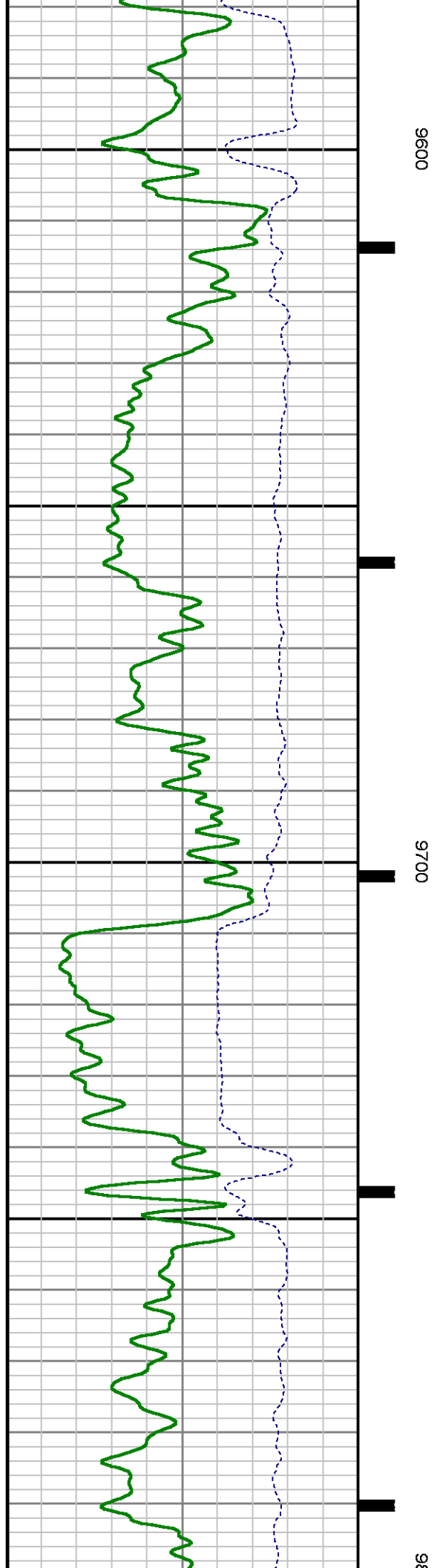
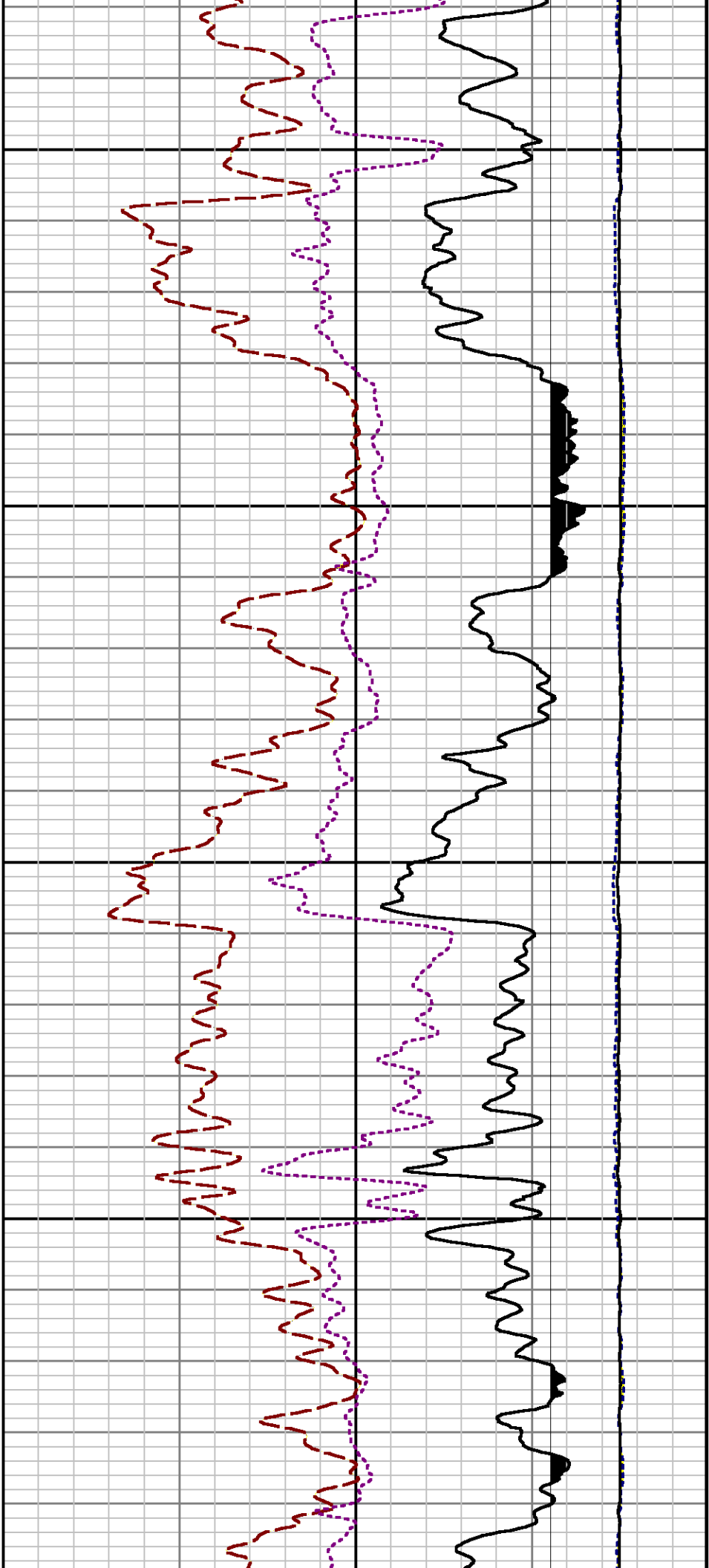


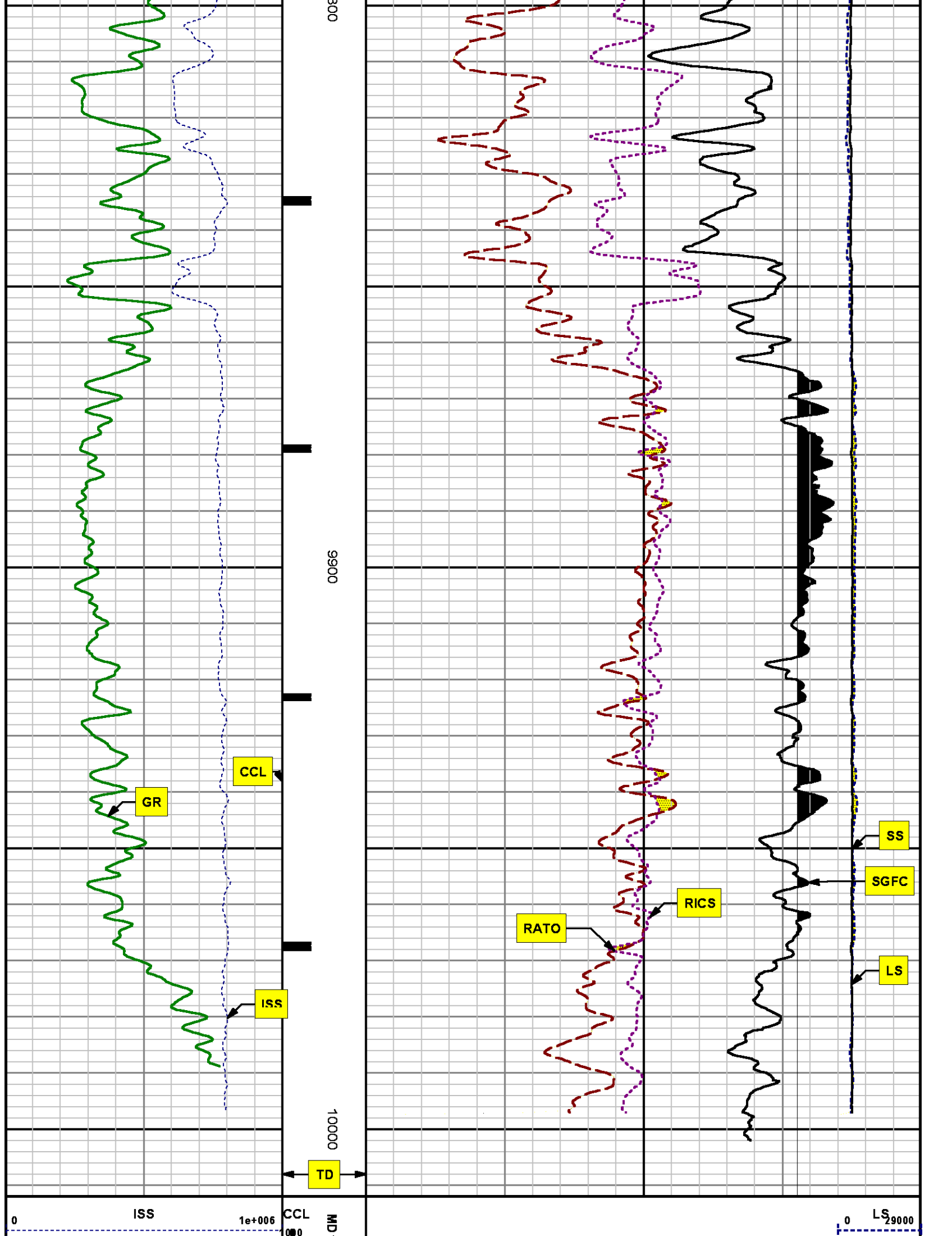


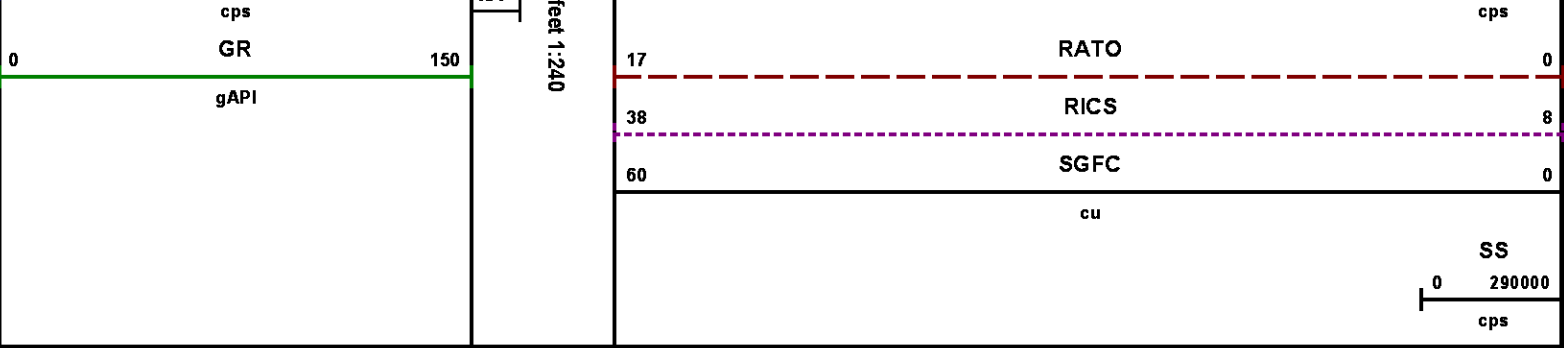
9400

9500









8281XA

-12.291

HVC2Q0 SEQ2 AMA2 AMB2 AMF2 AML2
 BKL CHF2 CLS CPT2Q0 CPT2Q2 CPT2Q3
 CPT2Q4 ET2 ILS LS MCS2 MCS2Q0
 QCAL2 RGN2 RICL RONE23 RTWO23 SDA2
 SDL2 SGA2 SGB2 SGF2 SGK2 SGL2
 STA2 ASPEC2 ILSC ILSN WDT2 RICLC
 CLSR ILSR LSR RICLR

8281XA

-12.041

CPRS HVC1Q0 MV SEQ SEQ1 AMA1
 AMB1 AME1 AMF1 AML1 BKS CHF1
 CSS CORB CORF CPT1Q0 CPT1Q2 CPT1Q2A
 CPT1Q2B CPT1Q2C CPT1Q3 CPT1Q4 CPT1Q5 ET1
 G1 G2 GE1S GE2S ISS MCS1
 MCS1Q0 QA1 QCAL1 QM1 RATO RATO13
 RBOR RGN1 RICS RIN RONE RPOR
 RTWO RIN13 RONE13 RTWO13 SALB SC1
 SDA1 SDL1 SGA1 SGB1 SGBC SGE1
 SGF1 SGFC SGK1 SGL1 SS SS2
 STA1 PD1S PD2S PD3S MD1S MD2S
 MD3S DG1S DG2S DG3S PD1M PD2M
 PD3M MD1M MD2M MD3M DG1M DG2M
 DG3M MVS MA MVM FILV IAM
 TA PVM PVS IAS SSTAT QPD1
 QPD2 QPD3 QMD1 QMD2 QMD3 QDG1
 QDG2 QDG3 QMA QTA QFILV QMV
 QPV QIA DERR DCNT QPK1 QSA1
 PKS1 ASPEC1 H0C FE2XC ISSC RINC
 ISSN RDEN WDT1 RICSC CSSR G1R
 G2R ISSR SSR SS2R RATOR RATO13R
 RBORR RICSR RINR RIN13R RONE RPORR
 RTWOR

8255XA

-0.792

PTFS PTMS

8255XA

-0.775

SPF1 SPFQ TSCP TSDP

8255XA

0.000

DTEM TEMP TNF

SYSTEM

0.000

TEN TTEN

Created by : RPM9, v5.3.1.0

Plotted by : PlotMgr, v5.4.504

Company : WPX ENERGY

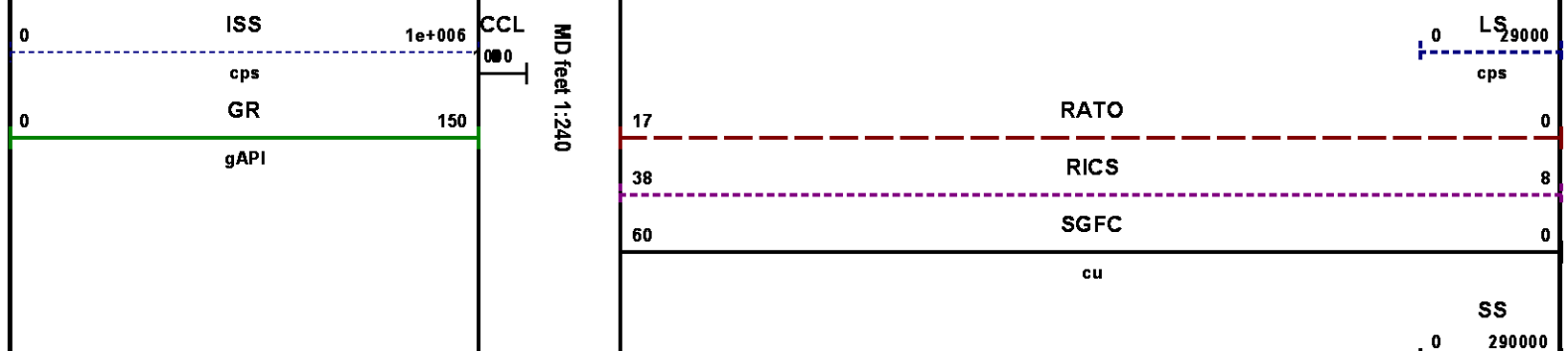
Well : FEDERAL PA 524-16

File Name : d:\well\data\wp\pa 524-16\524rpm\repeat.xtf

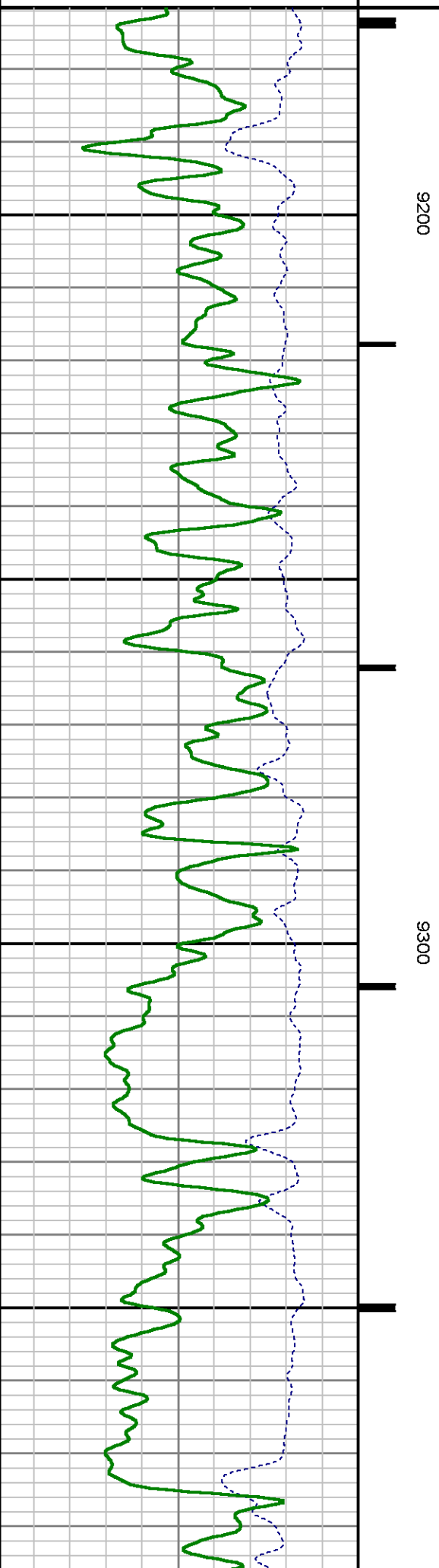
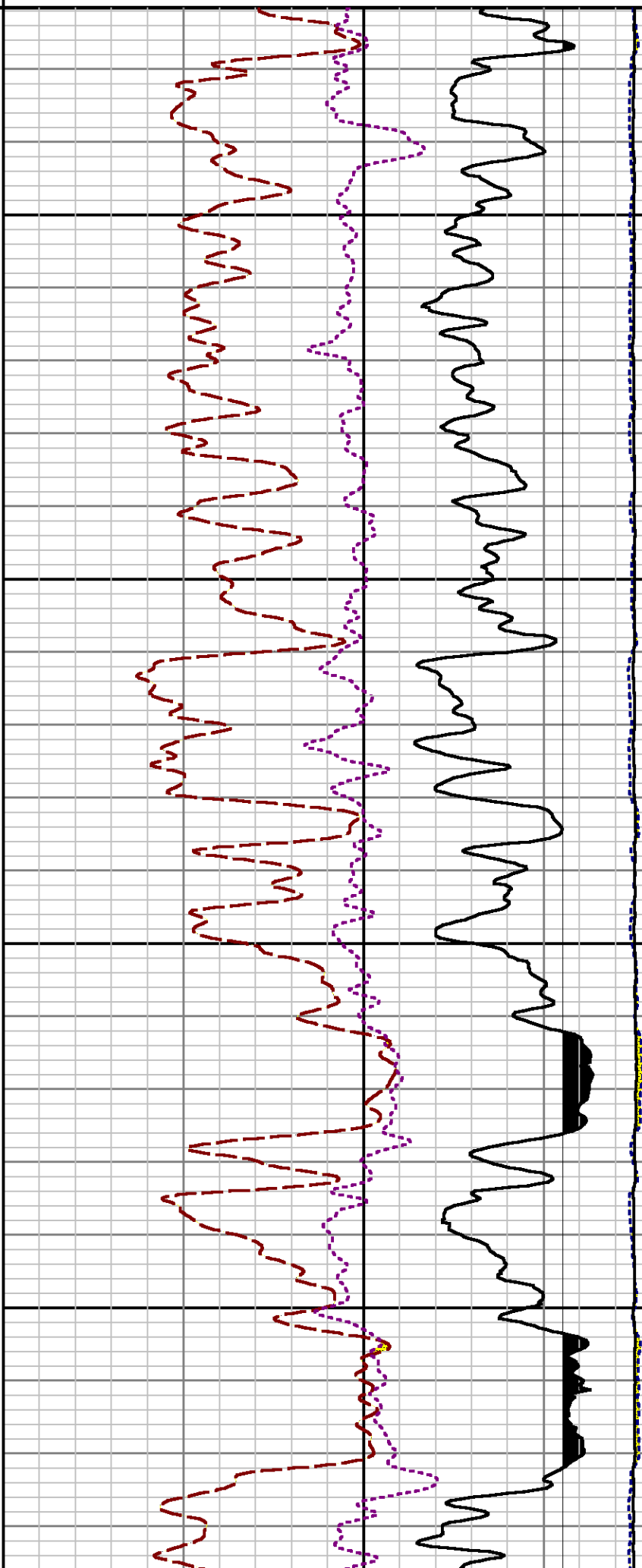
Mode : PlotMgr 5.4.504

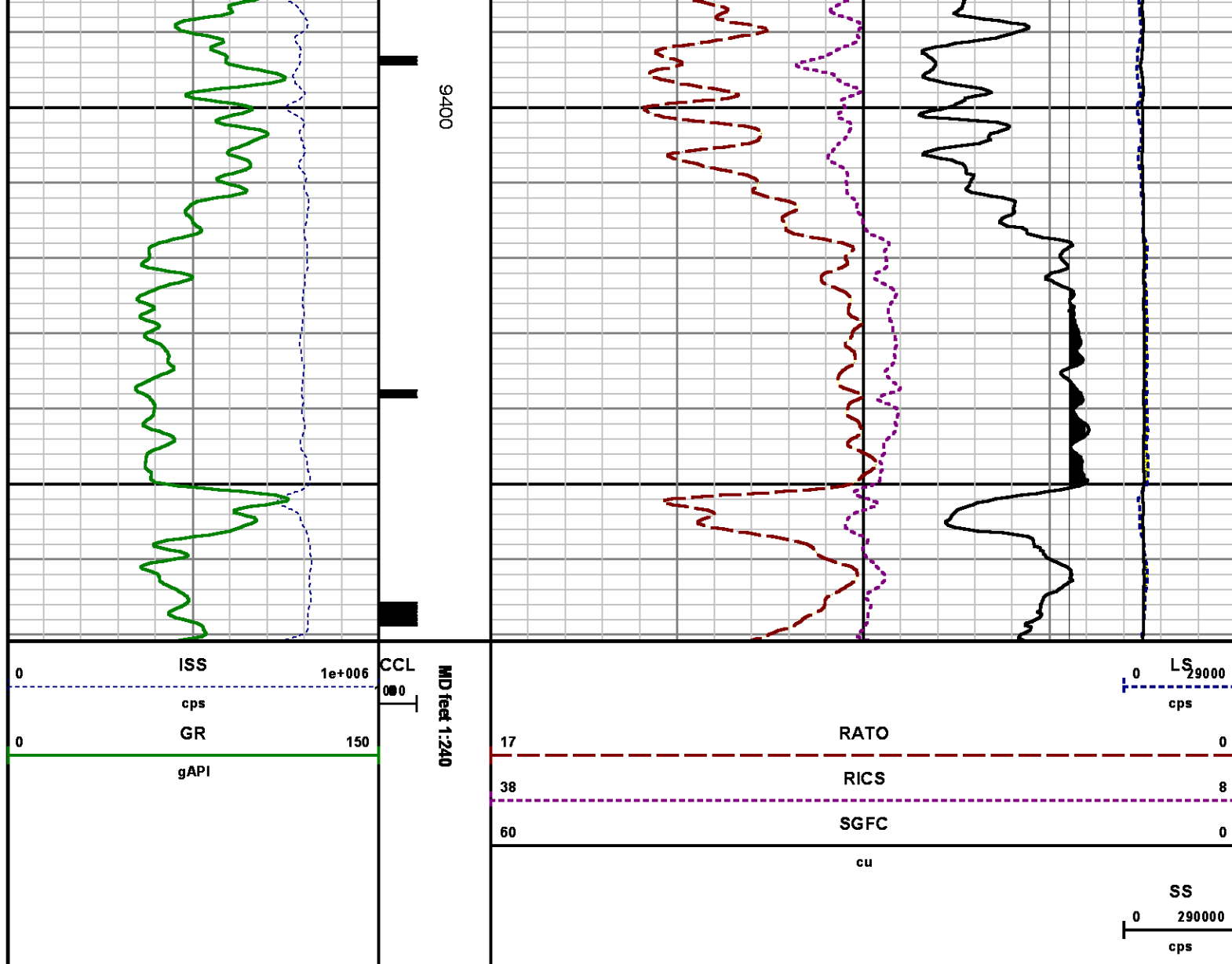
Interval : 9171.57 - 9471.00 feet UP

Created : 5/22/2014 11:37:57 AM



cps





CALIBRATION SUMMARY

GAMMA RAY

Calibration File: C:\case\calver\GR\38220.cal

CALIBRATION SUMMARY

DATE/TIME PERFORMED: Tue May 20 19:18:21 2014

TOOL SERIES: 2812LA ASSET: 382 SEQ: 20

Calibrator #	Background [cps]	Calibrator On [cps]	Multiplicative	Background [api]	Calibrator On [api]	Differential [api]
S2K WA612	55.04	271.02	0.972	53.52	263.52	210.00

Verification File: C:\case\calver\GR\38220.VP

PRIMARY VERIFICATION

DATE/TIME PERFORMED: Tue May 20 19:21:16 2014 TOOL SERIES: 2812LA ASSET: 382 SEQ: 20

Calibrator #	Background [cps]	Calibrator On [cps]	Multiplicative	Background [api]	Calibrator On [api]	Differential [api]
S2K WA612	54.71	266.67	0.972	53.20	259.29	206.09

PNC

Calibration File: C:\case\calver\PNC\25125.cal

PNC 3D CALIBRATION SUMMARY

DATE/TIME PERFORMED: Fri Apr 25 21:41:21 2014 TOOL SERIES: 8281XA ASSET: 251 SEQ: 25

Calibrator #

2437XB GJSHOP

Source #

8281AA 10220684

	ISS	Mtr Vlt (V)	SS Gain	LS Gain	XLS Gain	EA Temp (degF)	Sync Delay (usec)	RCAL
Raw Data	816262	121.00	2314.00	2299.00	2312.00	109.29	7.00	0.9804
Interpolated	1300000	141.60	2290.45	2294.98	2310.26			

	ISS	BKS	BKL	BKX	SGA1	SDA1	SGA2	SDA2
Raw Data	816262	8611.91	1417.02	177.10	25.87	0.14	24.28	0.28
					25.35 26.40	0.00 0.20	23.60 24.80	0.00 0.40

	ISS	ILS	IXS	SS	SS2	LS	CSS	CLS
Raw Data	816262	169865.19	26945.61	90435.30	32203.50	8403.61	54738.16	13426.76
Fit Quality %		0.89	0.91	0.81	0.81	0.83	0.74	0.85

	ISS	RBOR	RIN ISS/ILS	RIN13 ISS/IXS	RICS ISS/CSS	RATO SS/LS	RTWO SS2/LS	RONE CSS/CLS
Raw Data	816262	1.43	4.81	30.30	14.91	10.76	3.83	4.08
		1.42 1.45	3.55 5.52	22.20 32.70	10.99 16.34	10.06 11.10	3.57 3.95	3.76 4.22
Fit Quality %		0.04	0.26	0.30	0.19	0.16	0.13	0.12
Reduced	1398456	1.43	4.81	30.30	14.96	10.73	3.82	4.07
		1.42 1.45	4.33 5.52	27.60 32.70	13.70 16.34	10.06 11.10	3.57 3.95	3.76 4.22

TEMPERATURE

CALIBRATION SUMMARY

DATE/TIME PERFORMED: FEB 13 2014

TOOL SERIES: 8255XA ASSET: 774568 SEQ: 13

	T(0)	T(1)	T(2)	T(3)	T(4)	T(5)
Coefficients	-9.274653e+000	1.055639e-001	2.143764e-006	-2.782846e-010	0.000000e+000	0.000000e+000

TOOL DIAGRAM

OTA SHORT CABLE HEAD**PCM POWER SUPPLY**

Series	8250EA
Mnemonic	PCM
Diameter	1.70"
Weight	18.00 lb
Length	3.86'
Temp Rating	350.00 °F

TELEMETRY / CCL

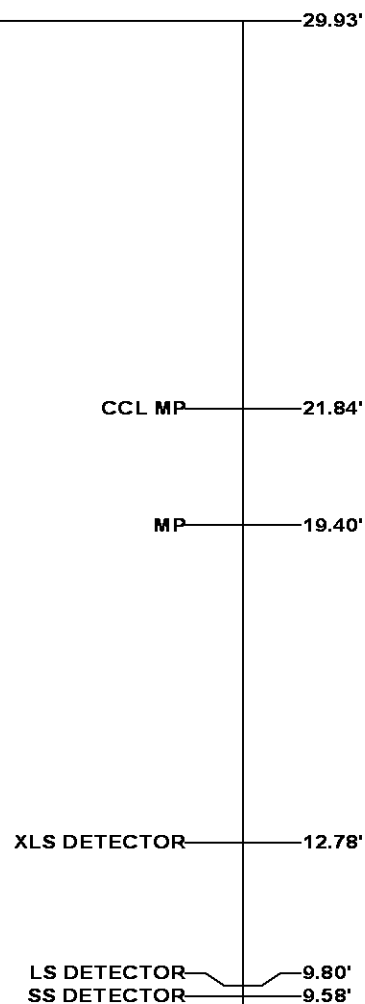
Series	8248EA
Mnemonic	PCM
Diameter	1.70"
Weight	20.00 lb
Length	4.46'
Measure Point	1.00' CCL MP
Temp Rating	350.00 °F
Press Rating	15000.00 PSI

SONDEX GAMMA RAY

Series	2812LA
Mnemonic	SNDX
Diameter	1.69"

RESERVOIR PERFORMANCE MONITOR

Series	8281XA
Mnemonic	RPM
Diameter	1.70"
Weight	75.00 lb
Length	18.58'
Measure Point	9.49' SS DETECTOR
Measure Point	9.72' LS DETECTOR
Measure Point	12.69' XLS DETECTOR
Temp Rating	350.00 °F
Press Rating	20000.00 PSI



0.00'

Total Length: 29.93'
Total Weight: Not Available
Max Diameter: 0' 1.70"



Baker Atlas

CASE

Company	WPX ENERGY		
Well	FEDERAL PA 524-16		
Field	PARACHUTE		
County	GARFIELD	State	COLORADO

File No:
CH085886
API No:
05045220420000

Location			
SHL: 2600' FNL & 1396' FWL SEC 21			
BHL: 1030' FSL & 2326' FWL (SESW) SEC 16			
SEC	16	TWP	6S
		RGE	95W

Elevations	
KB	6056 ft
DF	
GL	6030 ft

16 6S 95W
PA 22-21 PAD
NABORS 573