

WELL LOCATION PLAT
T5S, R65W, 6th P.M.

ConocoPhillips Company

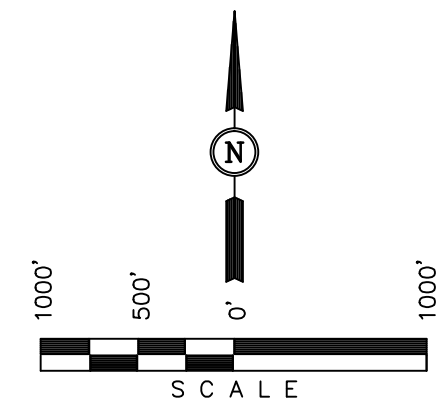
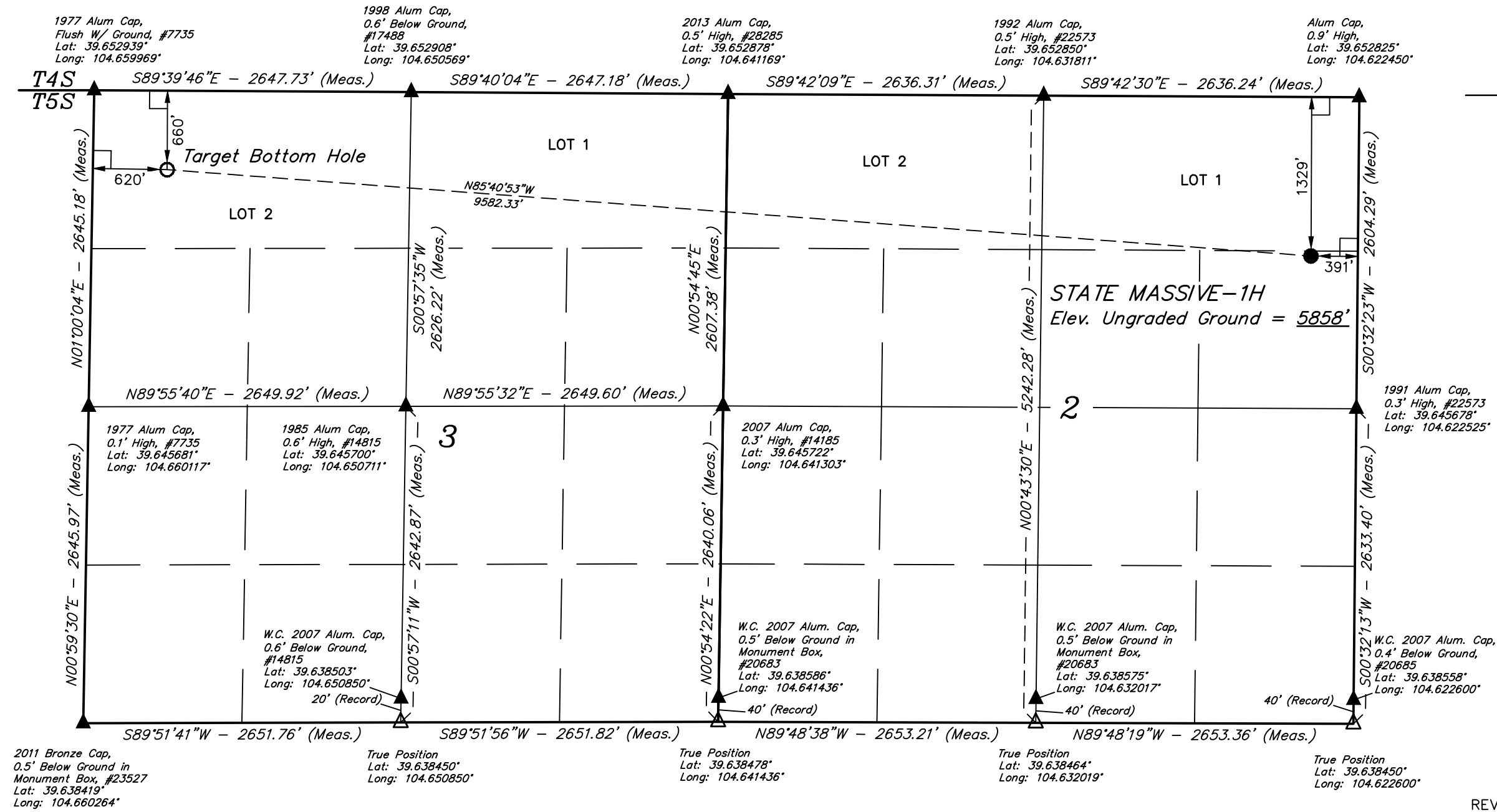
Well location, STATE MASSIVE-1H, located as shown in the SE 1/4 NE 1/4 of Section 2, T5S, R65W, 6th P.M., Arapahoe County, Colorado.

BASIS OF ELEVATION

BENCHMARK 374 LOCATED ON THE SECTION LINE BETWEEN SECTIONS 12 & 13, T5S, R64W, 6th. P.M., TAKEN FROM 1988 PUBLISHED DATUM BY THE UNITED STATES DEPARTMENT OF THE INTERIOR, GEOLOGICAL SURVEY AS BEING 6054.61 FEET.

BASIS OF BEARINGS

BASIS OF BEARINGS IS A G.P.S. OBSERVATION.



CERTIFICATE OF REGISTRATION
THIS IS TO CERTIFY THAT THE ABOVE PLAT WAS PREPARED FROM FIELD NOTES OF ACTUAL SURVEYS MADE BY ME OR UNDER MY SUPERVISION AND THAT THE SAME ARE TRUE AND CORRECT TO THE BEST OF MY KNOWLEDGE AND BELIEF.
REGISTERED LAND SURVEYOR
REGISTRATION NO. 28285
STATE OF COLORADO
JULY 14-14

- LEGEND:
- └─┘ = 90° SYMBOL
 - = PROPOSED WELL HEAD.
 - ▲ = SECTION CORNERS LOCATED.
 - △ = SECTION CORNERS RE-ESTABLISHED. (Not Set on Ground.)

NAD 83 (TARGET BOTTOM HOLE)	NAD 83 (SURFACE LOCATION)
LATITUDE = 39°39'04.03" (39.651119)	LATITUDE = 39°38'57.05" (39.649181)
LONGITUDE = 104°39'28.10" (104.657806)	LONGITUDE = 104°37'25.96" (104.623878)
NAD 27 (TARGET BOTTOM HOLE)	NAD 27 (SURFACE LOCATION)
LATITUDE = 39°39'04.08" (39.651133)	LATITUDE = 39°38'57.10" (39.649194)
LONGITUDE = 104°39'26.21" (104.657281)	LONGITUDE = 104°37'24.07" (104.623353)
STATE PLANE NAD 83	STATE PLANE NAD 83
N: 1663148.35 E: 3237140.56	N: 1662532.10 E: 3246700.16
STATE PLANE NAD 27	STATE PLANE NAD 27
N: 663140.98 E: 2237294.55	N: 662524.92 E: 2246854.09

UINTAH ENGINEERING & LAND SURVEYING 85 SOUTH 200 EAST - VERNAL, UTAH 84078 (435) 789-1017		
SCALE 1" = 1000'	DATE SURVEYED: 09-10-13	DATE DRAWN: 09-13-13
PARTY J.H. C.M. A.D.	REFERENCES G.L.O. PLAT	
WEATHER HOT	FILE ConocoPhillips Company	

SECTION BREAKDOWN
T5S, R65W, 6th P.M.

ConocoPhillips Company

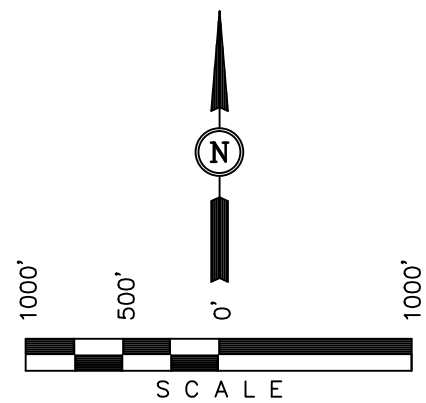
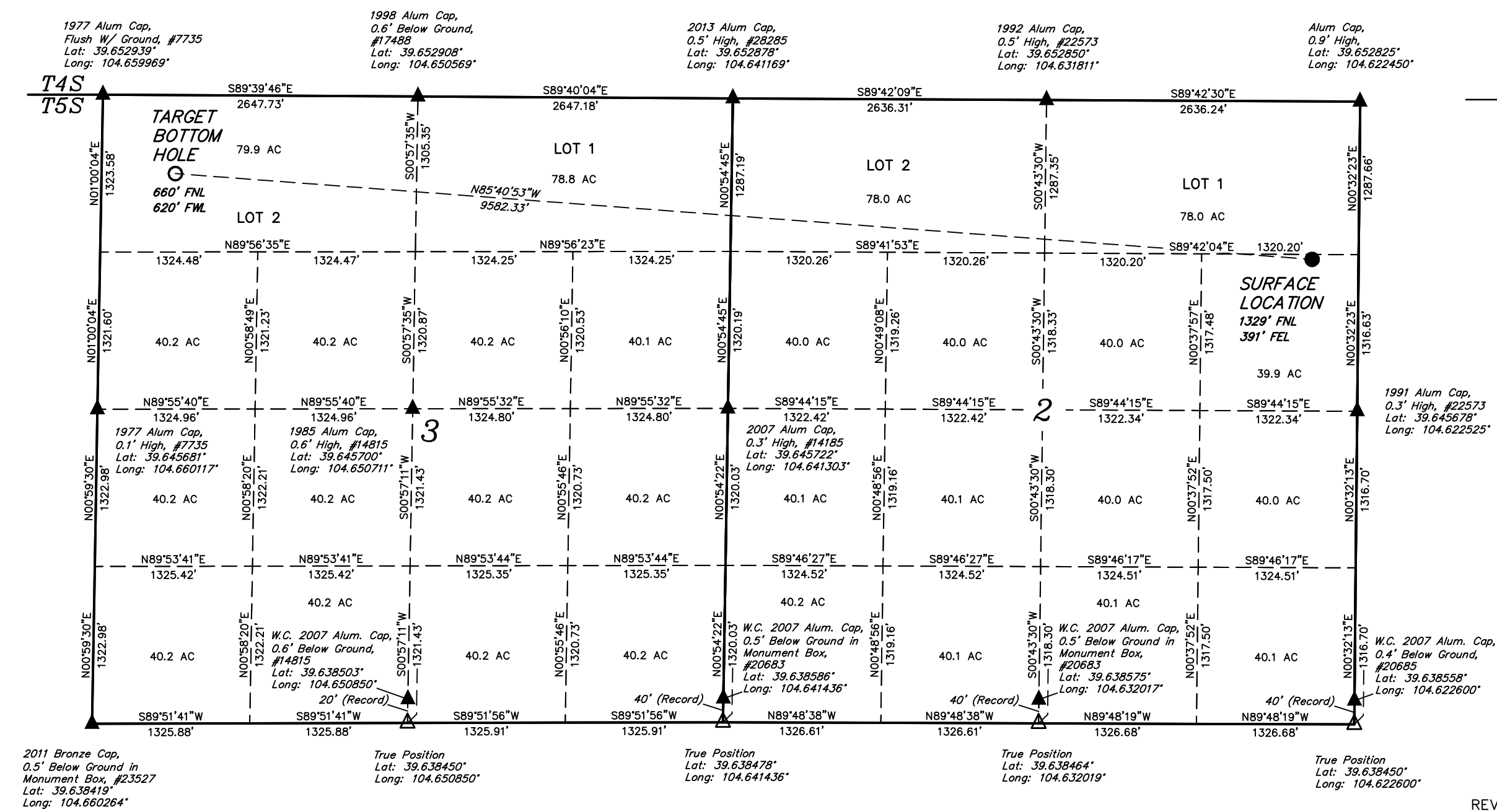
Well location, STATE MASSIVE-1H, located as shown in the SE 1/4 NE 1/4 of Section 2, T5S, R65W, 6th P.M., Arapahoe County, Colorado.

BASIS OF ELEVATION

BENCHMARK 374 LOCATED ON THE SECTION LINE BETWEEN SECTIONS 12 & 13, T5S, R64W, 6th. P.M., TAKEN FROM 1988 PUBLISHED DATUM BY THE UNITED STATES DEPARTMENT OF THE INTERIOR, GEOLOGICAL SURVEY AS BEING 6054.61 FEET.

BASIS OF BEARINGS

BASIS OF BEARINGS IS A G.P.S. OBSERVATION.



CERTIFICATE

THIS IS TO CERTIFY THAT THE ABOVE PLAT WAS PREPARED FROM FIELD NOTES OF ACTUAL SURVEYS MADE BY ME OR UNDER MY SUPERVISION AND THAT THE SAME ARE TRUE AND CORRECT TO THE BEST OF MY KNOWLEDGE AND BELIEF.

REGISTERED LAND SURVEYOR
REGISTRATION NO. 28285
STATE OF COLORADO

REVISOR: J.S.
REVISOR: J.S.

- LEGEND:
- └─┘ = 90° SYMBOL
 - = PROPOSED WELL HEAD.
 - ▲ = SECTION CORNERS LOCATED.
 - △ = SECTION CORNERS RE-ESTABLISHED. (Not Set on Ground.)

NAD 83 (TARGET BOTTOM HOLE)	NAD 83 (SURFACE LOCATION)
LATITUDE = 39°39'04.03" (39.651119)	LATITUDE = 39°38'57.05" (39.649181)
LONGITUDE = 104°39'28.10" (104.657806)	LONGITUDE = 104°37'25.96" (104.623878)
NAD 27 (TARGET BOTTOM HOLE)	NAD 27 (SURFACE LOCATION)
LATITUDE = 39°39'04.08" (39.651133)	LATITUDE = 39°38'57.10" (39.649194)
LONGITUDE = 104°39'26.21" (104.657281)	LONGITUDE = 104°37'24.07" (104.623353)
STATE PLANE NAD 83	STATE PLANE NAD 83
N: 1663148.35 E: 3237140.56	N: 1662532.10 E: 3246700.16
STATE PLANE NAD 27	STATE PLANE NAD 27
N: 663140.98 E: 2237294.55	N: 662524.92 E: 2246854.09

UINTAH ENGINEERING & LAND SURVEYING 85 SOUTH 200 EAST - VERNAL, UTAH 84078 (435) 789-1017		
SCALE 1" = 1000'	DATE SURVEYED: 09-10-13	DATE DRAWN: 09-13-13
PARTY J.H. C.M. A.D.	REFERENCES G.L.O. PLAT	
WEATHER HOT	FILE ConocoPhillips Company	