

GREAT WESTERN OIL & GAS COMPANY

LOCATION DRAWING FOR

GUSTAFSON OFF-SITE TANK BATTERY

SECTION 31, T7N, R65W, 6th P.M.

1107' FNL 2612' FWL

FIGURE #4

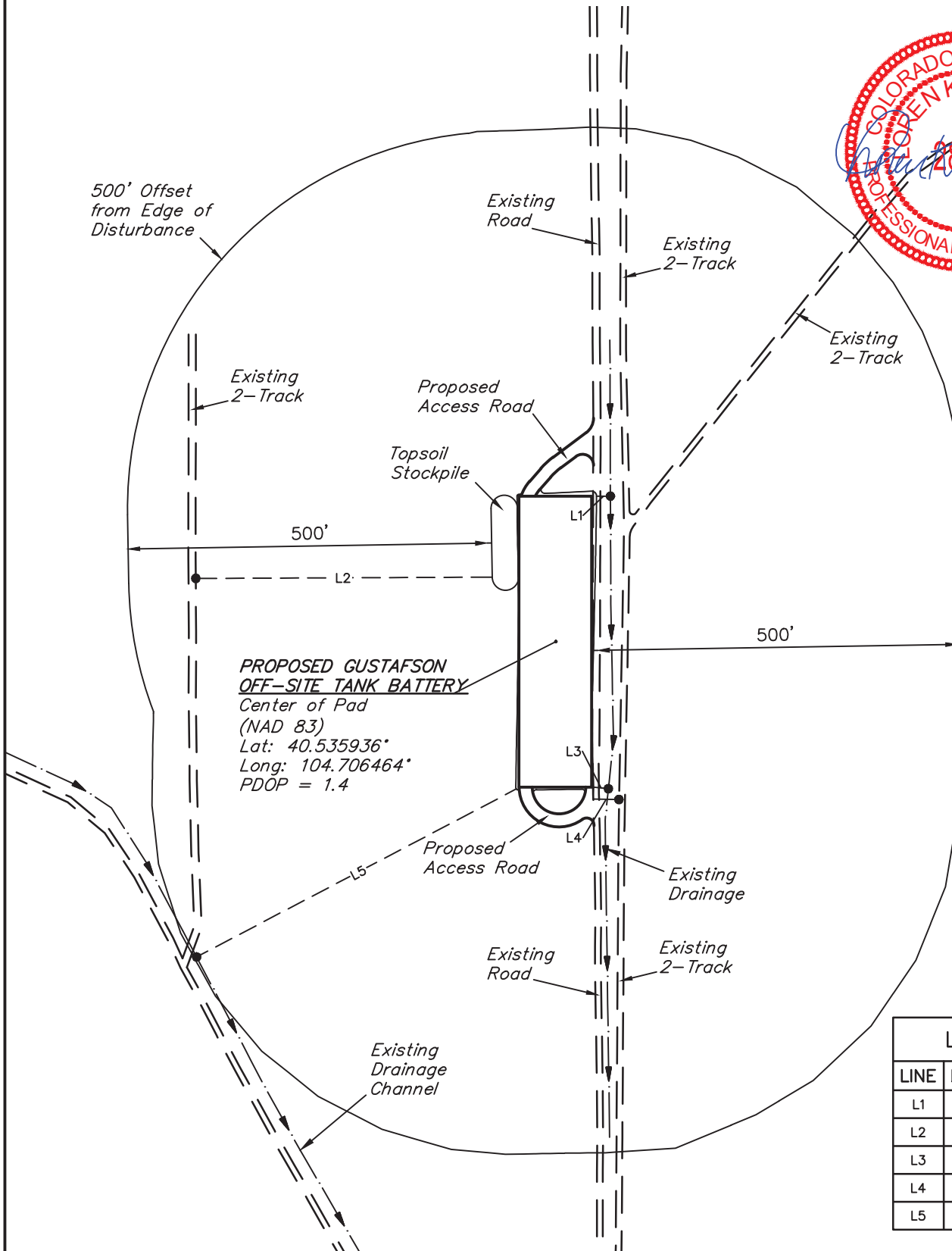
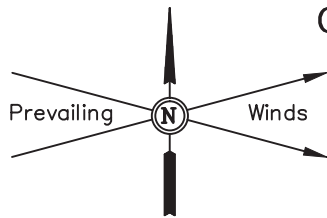
SCALE: 1" = 200'

DATE SURVEYED: 01-24-14

SURVEYED BY: DALLAS NIELSEN

DATE DRAWN: 01-28-14

DRAWN BY: J.W.



LINE TABLE		
LINE	DIRECTION	LENGTH
L1	EAST	19'
L2	WEST	408'
L3	S84°E	21'
L4	S89°E	36'
L5	S62°W	497'

UINTAH ENGINEERING & LAND SURVEYING

85 So. 200 East * Vernal, Utah 84078 * (435) 789-1017