

6/18/14

HALLIBURTON

iCem[®] Service

1320

CONOCO PHILLIPS

For: Wayne Morgan

Date: Wednesday, June 18, 2014

3-65 26

Case 1

Sincerely,
Mark Dean

The Road to Excellence Starts with Safety

Sold To #: 352431	Ship To #: 3207601	Quote #: 0021862170	Sales Order #: 0901409188
Customer: CONOCO/PHILLIPS COMPANY EBUSINESS		Customer Rep: Wayne Morgan	
Well Name: RESERVE 3-65 26	Well #: 1 H	API/UWI #: 05-005-09779-00	
Field: WILDCAT	City (SAP): AUR	County/Parish: ARAPAHOE	State: COLORADO
Legal Description: NW NW-26-3S-65W-660FNL-400FWL			
Contractor:		Rig/Platform Name/Num: H&P 276	
Job BOM: 7523			
Well Type: DIRECTIONAL OIL			
Sales Person: HALAMERICA\HX38199		Srvc Supervisor: Mark Dean	
Job			

Formation Name	
Formation Depth (MD)	Top Bottom
Form Type	BHST 219.3 degF
Job depth MD	11843ft Job Depth TVD
Water Depth	Wk Ht Above Floor 5 ft
Perforation Depth (MD)	From To

Well Data

Description	New / Used	Size in	ID in	Weight lbm/ft	Thread	Grade	Top MD ft	Bottom MD ft	Top TVD ft	Bottom TVD ft
Casing		9.625	8.921	36		J-55	0	2038		
Casing		5.5	4.67	23	BTC	P-110	0	11878		
Open Hole Section			8.75				2038	11878		

Tools and Accessories

Type	Size in	Qty	Make	Depth ft	Type	Size in	Qty	Make
Guide Shoe	5.5	1		11878	Top Plug	5.5	1	WFX
Float Shoe	5.5	1			Bottom Plug	5.5	1	WFX
Float Collar	5.5	1			SSR plug set	5.5	1	HES
Insert Float	5.5	1			Plug Container	5.5	1	HES
Stage Tool	5.5	1			Centralizers	5.5	1	HES

Miscellaneous Materials

Gelling Agt	Conc	Surfactant	Conc	Acid Type	Qty	Conc
Treatment Fld	Conc	Inhibitor	Conc	Sand Type	Size	Qty

Fluid Data

Stage/Plug #: 1

Fluid #	Stage Type	Fluid Name	Qty	Qty UoM	Mixing Density lbm/gal	Yield ft3/sack	Mix Fluid Gal	Rate bbl/min	Total Mix Fluid Gal
1	Clean Spacer III	CLEANSPECER III	85	bbl	10.5	3.86			
30.80 gal/bbl FRESH WATER									
Fluid #	Stage Type	Fluid Name	Qty	Qty UoM	Mixing Density lbm/gal	Yield ft3/sack	Mix Fluid Gal	Rate bbl/min	Total Mix Fluid Gal

2	ExtendaCem	EXTENDACEM (TM) SYSTEM	665	sack	12	1.94		4	10.29
0.20 %		SUPER CBL, 50 LB PAIL (100003668)							
10.29 Gal		FRESH WATER							
Fluid #	Stage Type	Fluid Name	Qty	Qty UoM	Mixing Density lbm/gal	Yield ft3/sack	Mix Fluid Gal	Rate bbl/min	Total Mix Fluid Gal
3	ExpandaCem B2	EXPANDACEM (TM) SYSTEM	860	sack	13.8	1.67		4	7.7
7.70 Gal		FRESH WATER							
0.30 %		SCR-742, 50 LB BAG (102027729)							
Fluid #	Stage Type	Fluid Name	Qty	Qty UoM	Mixing Density lbm/gal	Yield ft3/sack	Mix Fluid Gal	Rate bbl/min	Total Mix Fluid Gal
4	MMCR Displacement	MMCR Displacement	0	bbl	8.34				
0.10 gal/bbl		MICRO MATRIX CEMENT RETARDER, 5 GAL PAIL (100003781)							
Fluid #	Stage Type	Fluid Name	Qty	Qty UoM	Mixing Density lbm/gal	Yield ft3/sack	Mix Fluid Gal	Rate bbl/min	Total Mix Fluid Gal
5	Displacement	Displacement	247	bbl	8.34				
Cement Left In Pipe		Amount	135 ft		Reason		Shoe Joint		
Comment									

Summary Report



Crew: _____

Job Start Date: 6/18/2014

Sales Order #: 0901409188
WO #: 0901409188
PO/AFE #: NACustomer: CONOCO/PHILLIPS COMPANY
EBUSINESS
UWI / API Number: 05-005-09779-00
Well Name: RESERVE 3-65 26
Well No: 1 HField: WILDCAT
County/Parish: ARAPAHOE
State: COLORADO
Latitude: 39.767172
Longitude: -104.639147
Sect / Twn / Rng: 26/3/65Job Type: CMT PRODUCTION
CASING BOM
Service Supervisor: Mark Dean
Cust Rep Name: Wayne Morgan
Cust Rep Phone #:

Remarks:

The Information Stated Herein Is Correct	Customer Representative Signature	Date
	Customer Representative Printed Name	

HALLIBURTON

CONOCO PHILLIPS
Conoco Reserve#3-65 26 50# 901409188
Case 1

1.6 Job Event Log

Type	Seq. No.	Activity	Graph Label	Date	Time	Source	Pass-Side Pump Pressure (psi)	Downhole Density (ppg)	Combined Pump Rate (bbl/min)	Comment
Event	1	Call Out	Call Out	6/17/2014	14:00:00	USER				Crew Called out at 1400 HRS 6-17-14
Event	2	Depart from Service Center or Other Site	Depart from Service Center or Other Site	6/17/2014	18:30:00	USER				Journey Management Meeting With HES Crew Prior to Departing Service Center
Event	3	Arrive At Loc	Arrive At Loc	6/17/2014	19:30:00	USER				Crew Arrives on location at 1930 HRS (Requested on location @ 2000)
Event	4	Wait on Customer or Customer Sub- Contractor Equip - Start Time	Assessment Of Location Safety Meeting	6/17/2014	20:00:00	USER				Rig Running Casing
Event	5	Other	Other	6/17/2014	23:00:00	USER				Water Provided By Rig, Tested Good For Mixing Cement
Event	6	Safety Meeting - Pre Rig-Up	Safety Meeting - Pre Rig-Up	6/18/2014	02:00:00	USER				Pre Rig-Up Meeting With HES Crew and Rig Personnel
Event	7	Wait on Customer or Customer Sub- Contractor Equipment - End Time	Assessment Of Location Safety Meeting	6/18/2014	04:30:00	USER				Casing on Bottom, Rig Circulated 8 bbls/min 1120 units gas
Event	8	Safety Meeting - Pre Job	Safety Meeting - Pre Job	6/18/2014	05:45:00	USER	16.00	0.01	0.00	Safety Meeting With HES and All 3rd Party Contractors (Discuss Hazards, and Job Procedure)
Event	9	Other	Other	6/18/2014	06:00:00	USER	15.00	-0.02	0.00	Top and Bottom Plug Pre-Loaded in Plug Container (Witnessed By Customer Rep.)
Event	10	Start Job	Start Job	6/18/2014	06:40:50	COM1	-4.00	8.33	0.00	

HALLIBURTON

CONOCO PHILLIPS
Conoco Reserve#3-65 26 SO# 901409188
Case 1

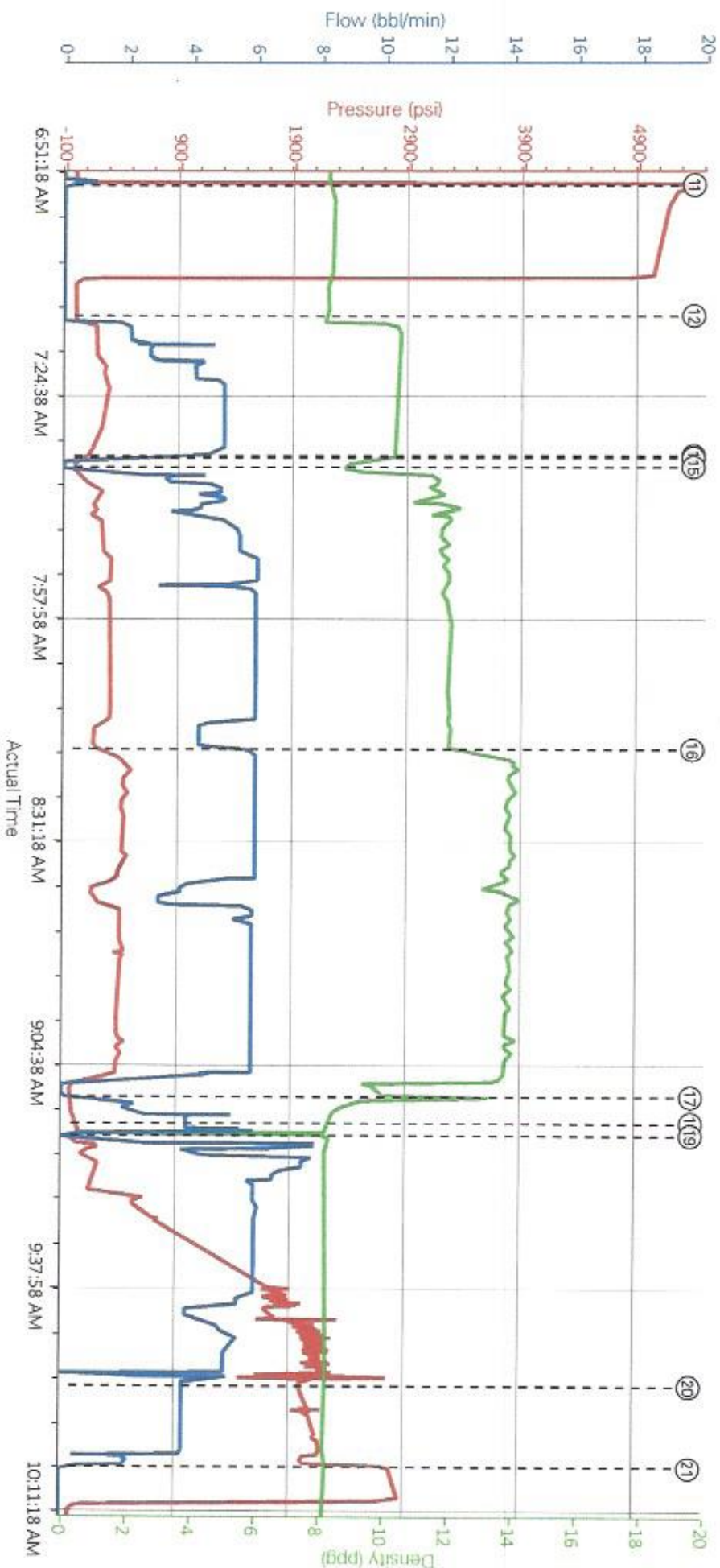
Event	11	Test Lines	Test Lines	6/18/2014	06:53:51	COM1	5287.00	8.40	0.00	Pressure Test Lines to 5000 PSI (Monitored Pressure, No Visible Leaks)
Event	12	Pump Spacer 1	Pump Spacer 1	6/18/2014	07:13:15	COM1	-7.00	8.22	0.00	Pump 85 bbls Clean Spacer @ 10.5 lb/gal (Density Verified By Pressurized Scales) (Spacer and Surfactants mixed on Batch Mixer in 2 batches)
Event	13	Shutdown	Shutdown	6/18/2014	07:34:12	COM1	26.00	10.10	0.00	
Event	14	Drop Bottom Plug	Drop Bottom Plug	6/18/2014	07:34:33	COM1	2.00	9.22	0.00	Drop Bottom Plug (Witnessed By Customer Rep.)
Event	15	Pump Lead Cement	Pump Lead Cement	6/18/2014	07:35:55	COM1	-2.00	8.83	0.00	Mix and Pump 665 sks (229.8 bbls) ExtendaCem Cement @ 12 lb/gal (Density Verified By Pressurized Scales)
Event	16	Pump Tail Cement	Pump Tail Cement	6/18/2014	08:18:05	COM1	322.00	12.79	6.00	Mix and Pump 860 (255.8 bbls) sks ExpandaCem Cement @ 13.8 lb/gal (Density Verified By Pressurized Scales)
Event	17	Clean Lines	Clean Lines	6/18/2014	09:10:00	USER	-6.00	9.32	1.10	Wash Pumps and Lines to 3-Sided Tank
Event	18	Drop Top Plug	Drop Top Plug	6/18/2014	09:14:00	USER	28.00	8.22	3.90	Drop Top Plug (Witnessed By Customer Rep.)
Event	19	Pump Displacement	Pump Displacement	6/18/2014	09:15:45	COM1	-25.00	8.36	0.00	Pump Fresh Water Displacement
Event	20	Spacer Returns to Surface	Spacer Returns to Surface	6/18/2014	09:53:00	USER	2003.00	8.22	3.80	Spacer Returns to Surface @ 200 bbls Away (2000 PSI) (46 bbls Spacer to Surface)
Event	21	Bump Plug	Bump Plug	6/18/2014	10:05:20	COM1	2787.00	8.29	0.00	Bump Plug @ 247 bbls Away, Final Pump Pressure 2100 PSI (Bumped to 2700 PSI) Good Returns Throughout Job

HALIBURTON

CONOCO PHILLIPS
Conoco Reserve#3-65 26 SO# 901409188
Case 1

Event	22	Check Floats	Check Floats	6/18/2014	10:39:47	USER	-30.00	7.48	1.50	Check Floats, Floats Holding (Returned 2 bbls Back to Truck)
Event	23	Safety Meeting - Pre Rig-Down	Safety Meeting - Pre Rig-Down	6/18/2014	10:40:38	USER	-25.00	8.26	2.90	Safety Meeting With HES Crew and Rig Personnel Prior to Rigging Down
Event	24	Safety Meeting - Departing location	Safety Meeting - Departing location	6/18/2014	10:41:42	USER	-25.00	8.28	2.90	Journey Management Meeting With HES Crew Prior to Departing location

Conoco / Phillips 5.5 Production 06-18-14



PS Pump Press (psi) DH Density (ppg) Comb Pump Rate (bbl/min)

- ① Call Out n/a n/a
- ② Depart from Service Center or Other Site n/a n/a
- ③ Arrive At Loc n/a n/a
- ④ Assessment Of Location Safety Meeting n/a n/a
- ⑤ Other n/a n/a
- ⑥ Safety Meeting - Pre Rig-Up n/a n/a
- ⑦ Assessment Of Location Safety Meeting n/a n/a
- ⑧ Safety Meeting - Pre Job 16:00:00
- ⑨ Other 15:00:00

- ⑩ Start Job 4:33:00
- ⑪ Test Lines 5:28:40
- ⑫ Pump Spacer 1 7:19:22.0
- ⑬ Shutdown 24:10:07.0
- ⑭ Drop Bottom Plug 2:29:21.0
- ⑮ Pump Lead Cement 2:28:34.0
- ⑯ Pump Tail Cement 32:11:28.6
- ⑰ Clean Lines 6:19:32.11
- ⑱ Drop Top Plug 28:22:3.8
- ⑲ Pump Displacement 25:19:36.0
- ⑳ Spacer Returns to Surface 20:03:22.3.8
- ㉑ Bump Plug 27:08:09.28.0
- ㉒ Check Floats 30:7:48.1.5
- ㉓ Safety Meeting - Pre Rig-Down 25:18:26.2.9
- ㉔ Safety Meeting - Departing Location 25:18:28.2.9

HALLIBURTON | iCem® Service

Customer: CONOCO PHILLIPS
Representative: Wayne Morgan

Job Date: 6/18/2014 4:45:57 AM
Sales Order #: 901409188

Well: 3-65 26
RedTiger #: 11667703

Created: 2014-06-18 03:55:08, Version: 3.0.148

Edit