

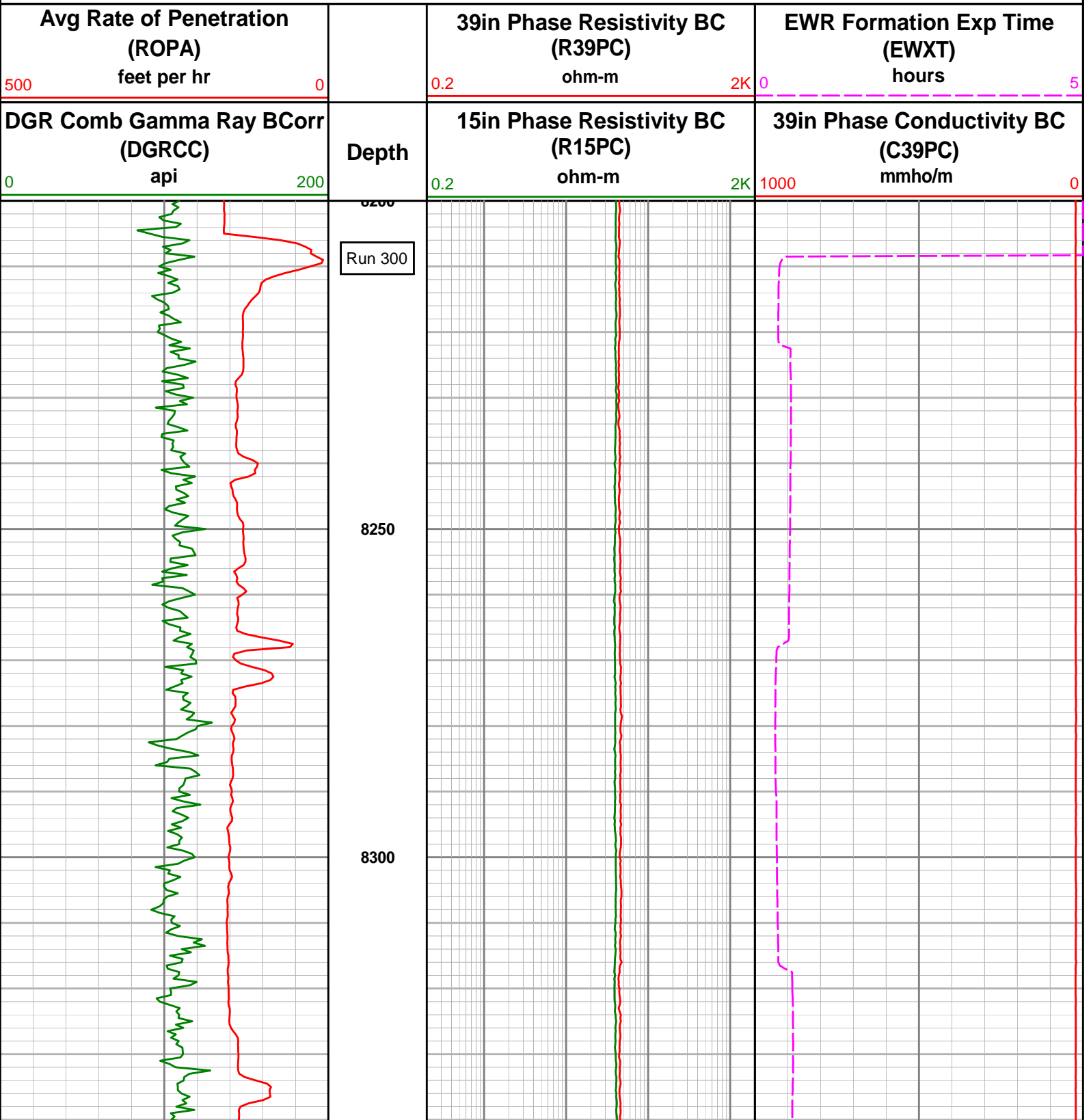
Conoco Phillips Company

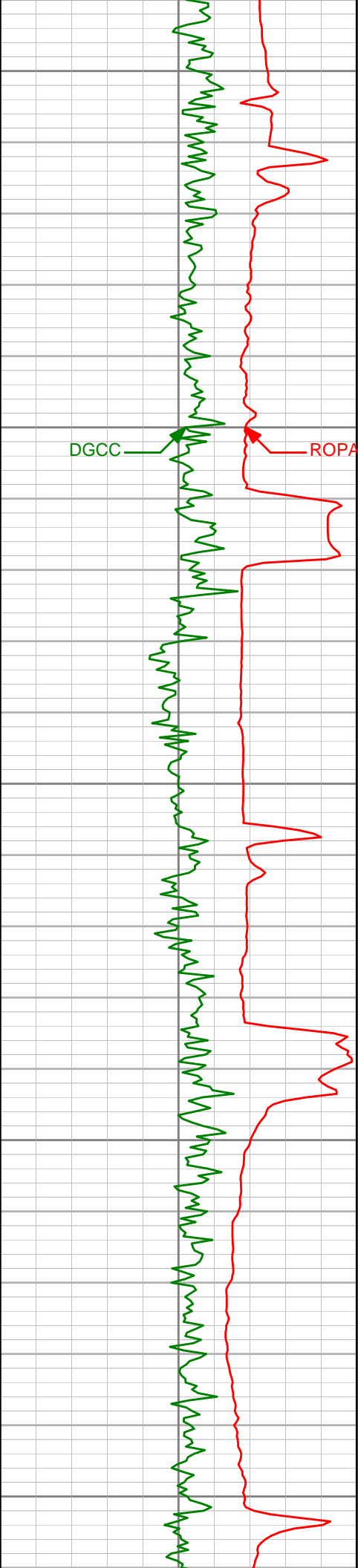
Well: Reserve 3-65-26-1H

Real-Time LWD Data - Field Copy

Scale 1:240 MD

Plot Time: 16-Jun-14 00:15





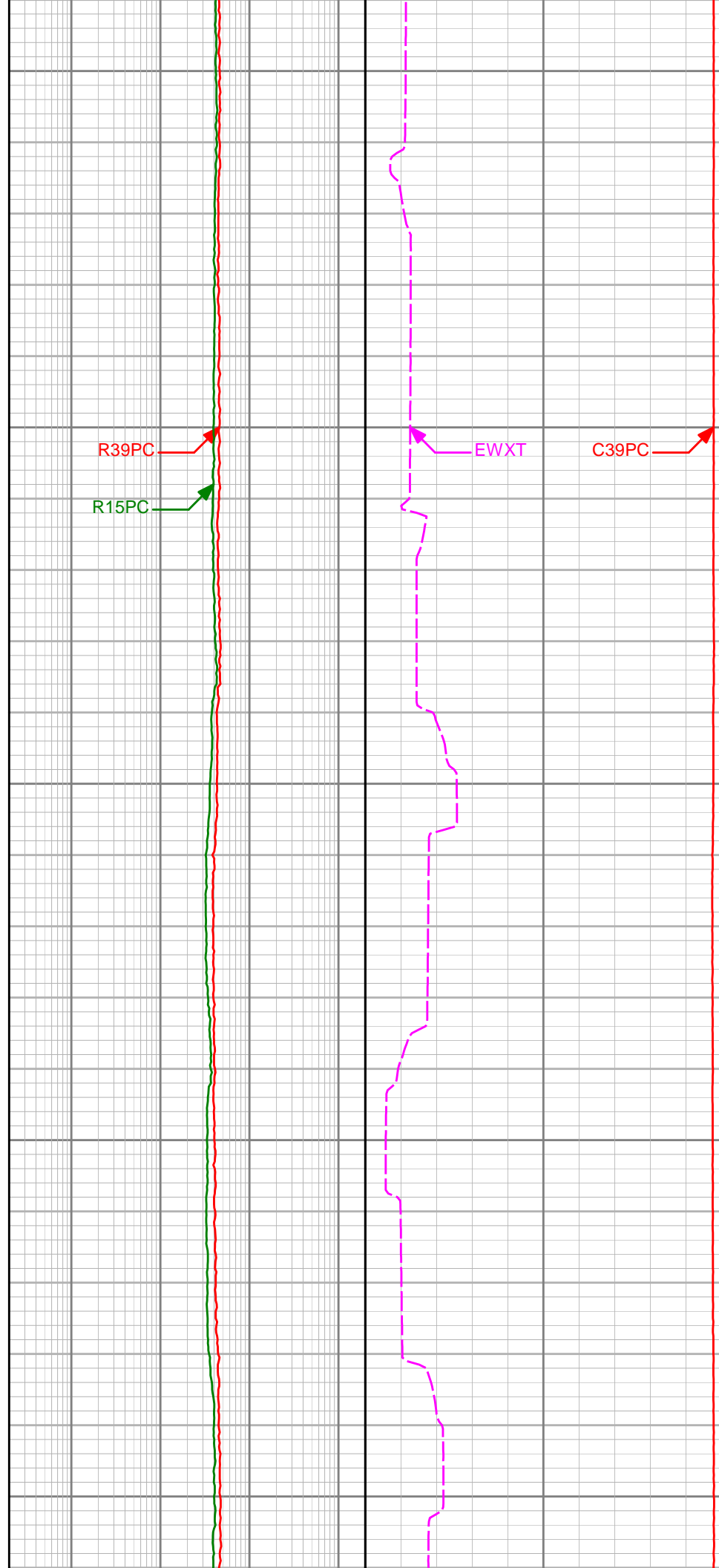
8350

8400

8450

8500

8550

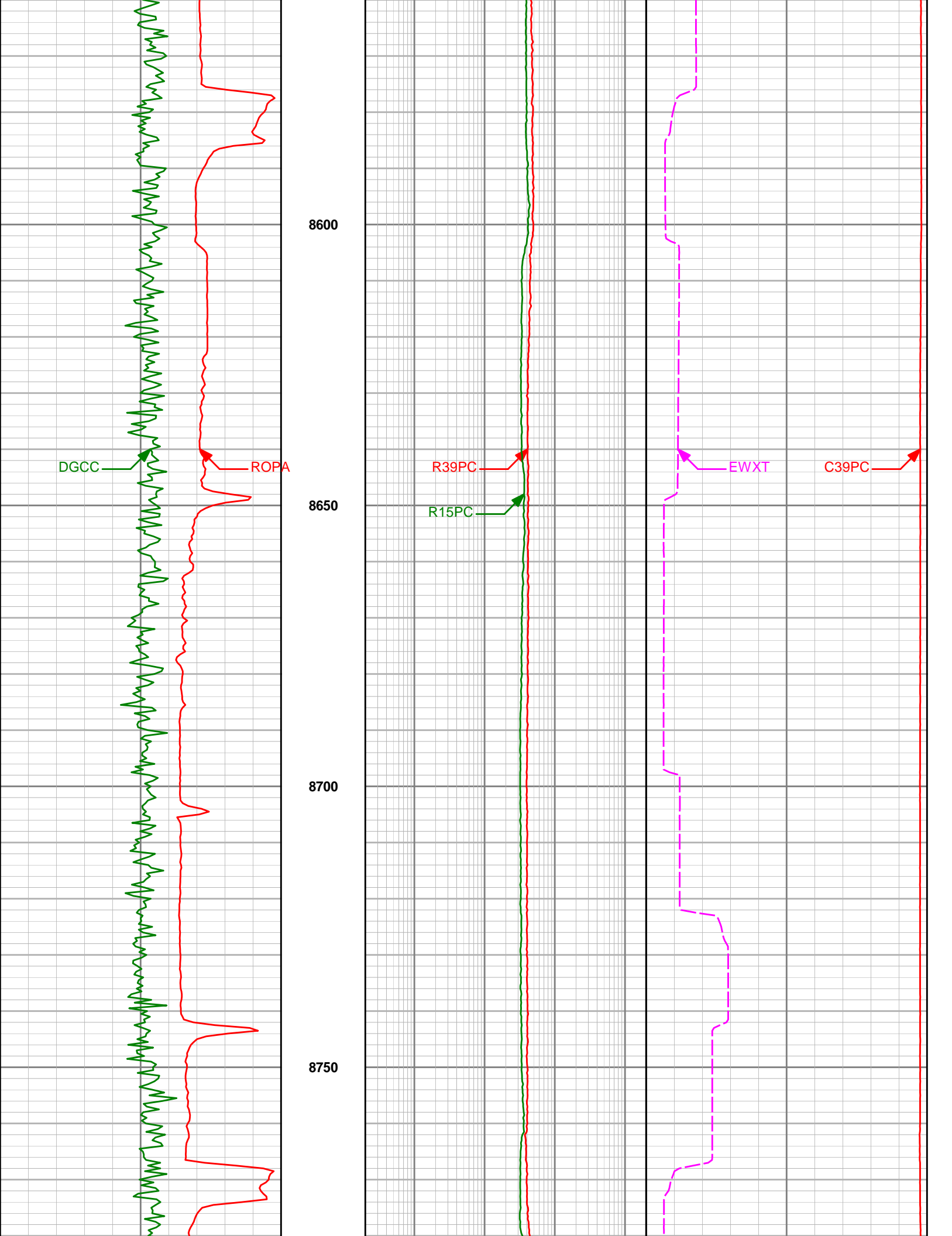


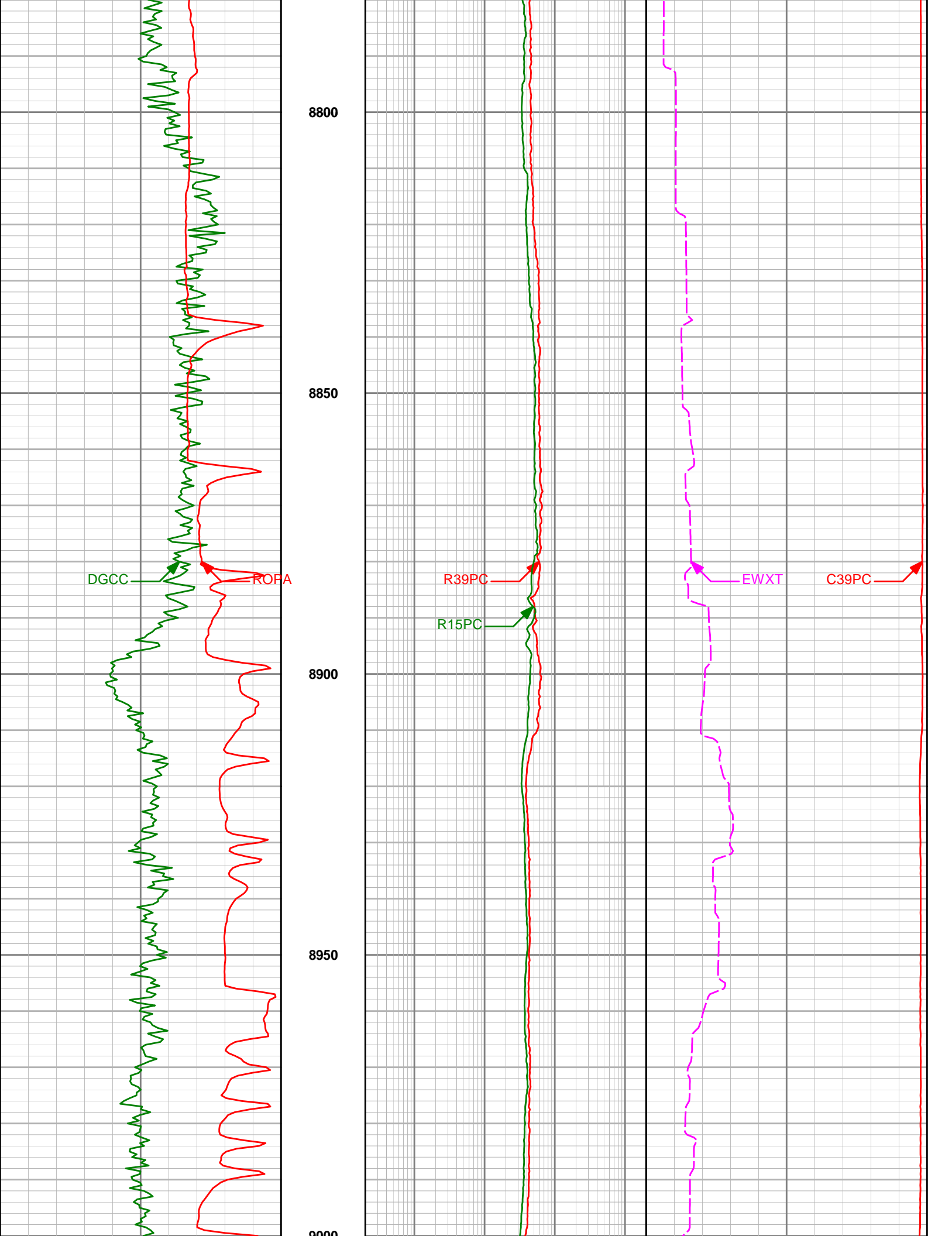
R39PC

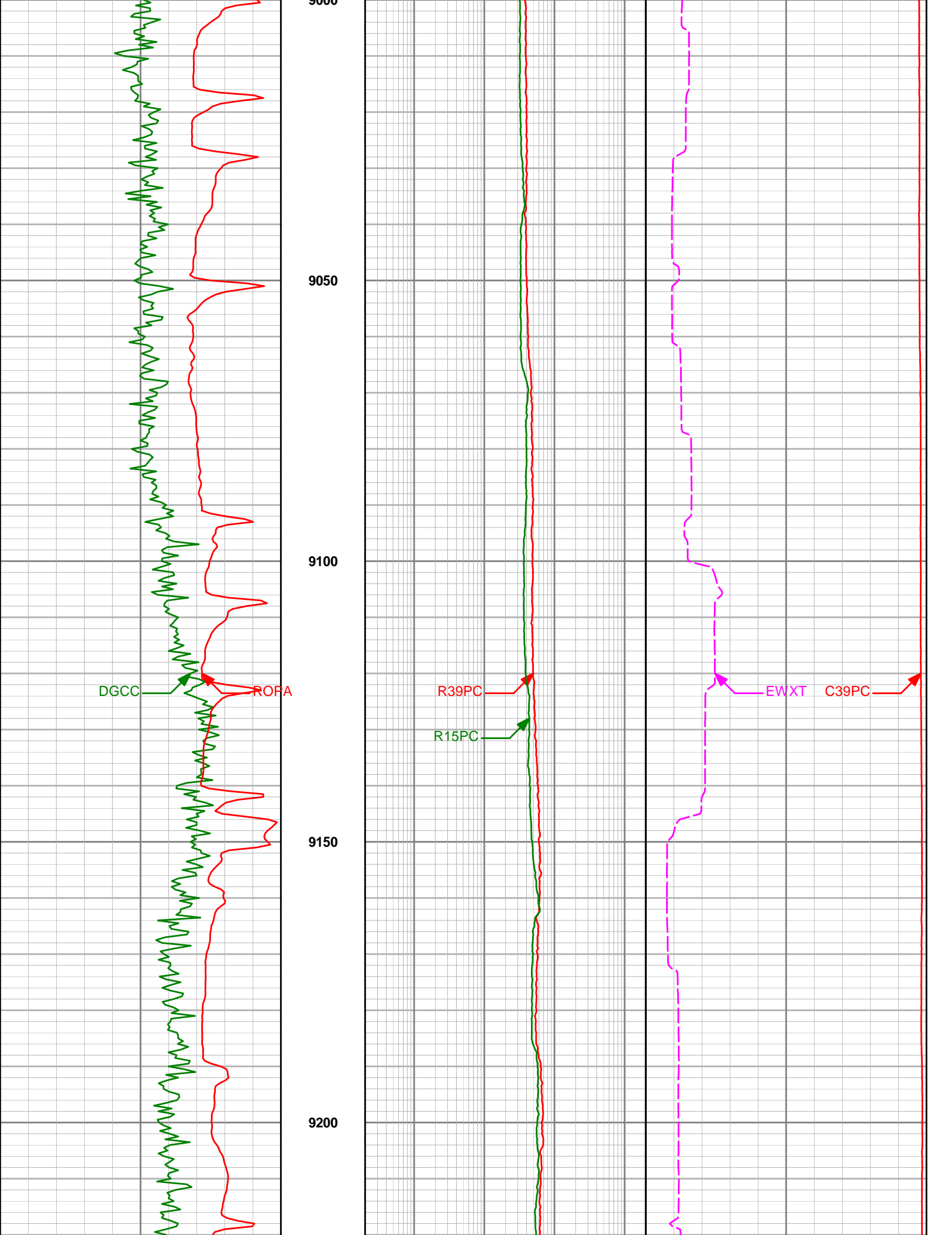
R15PC

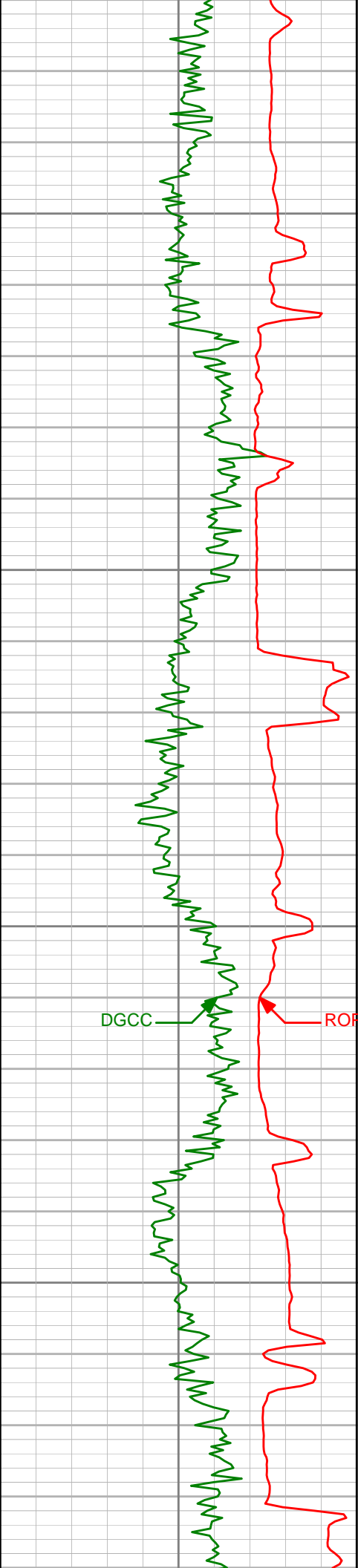
EWXT

C39PC









9250

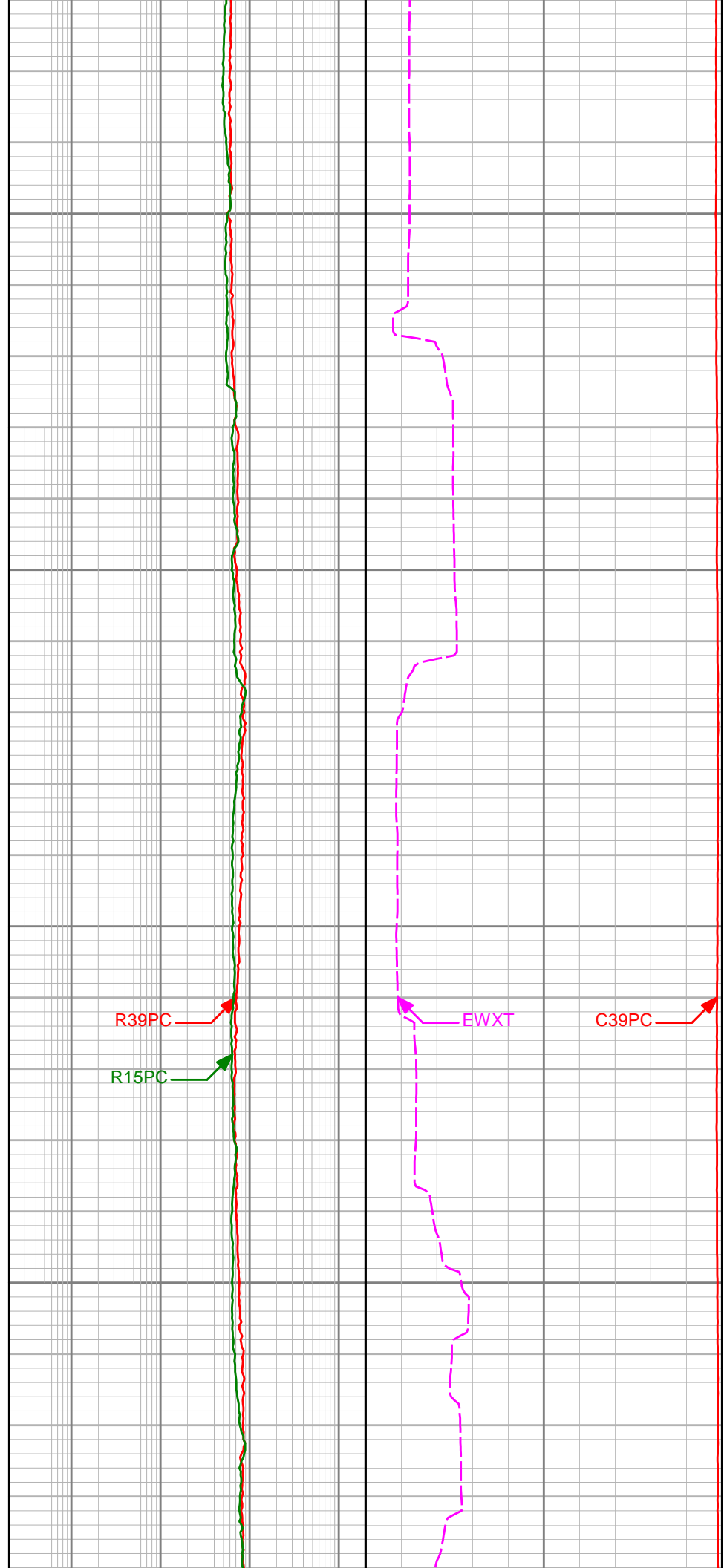
9300

9350

9400

DGCC

ROPA

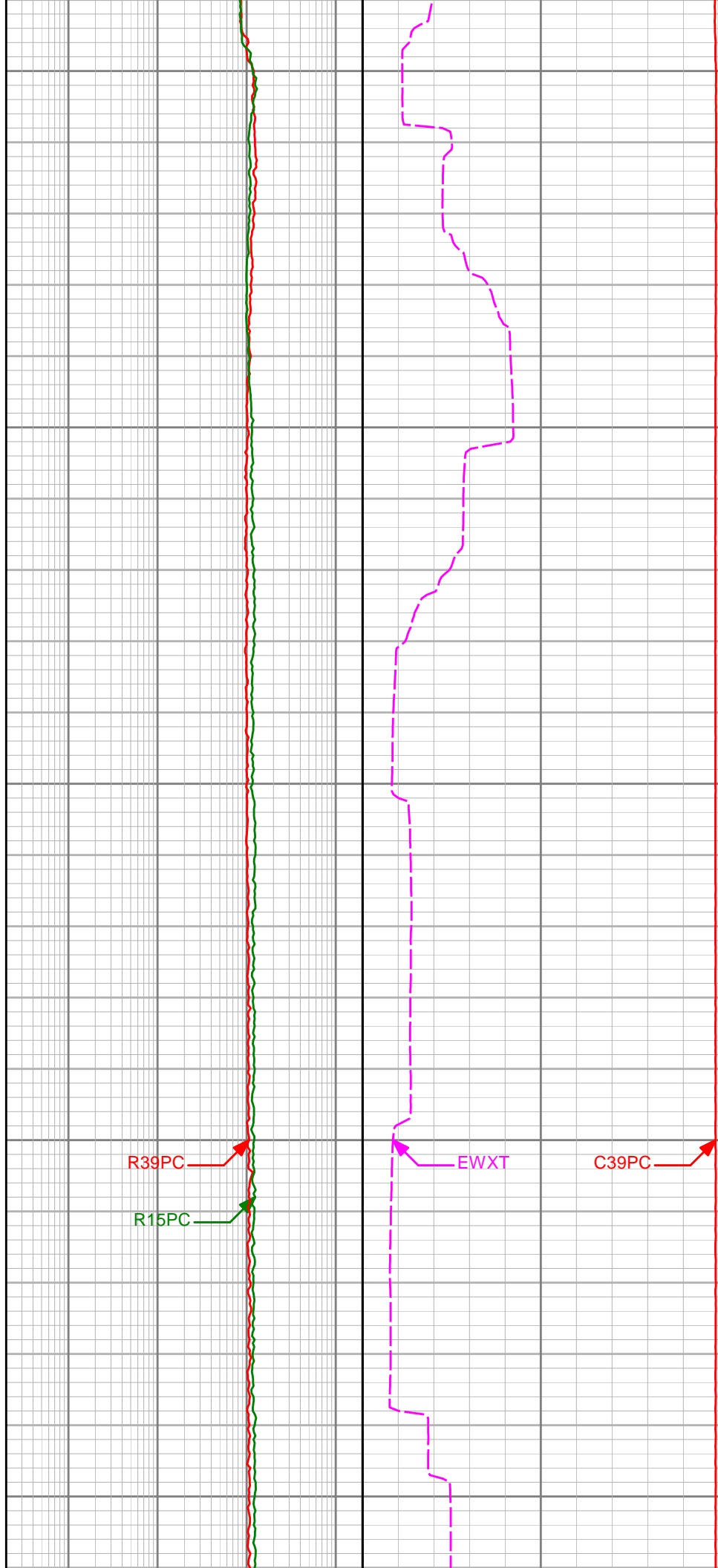
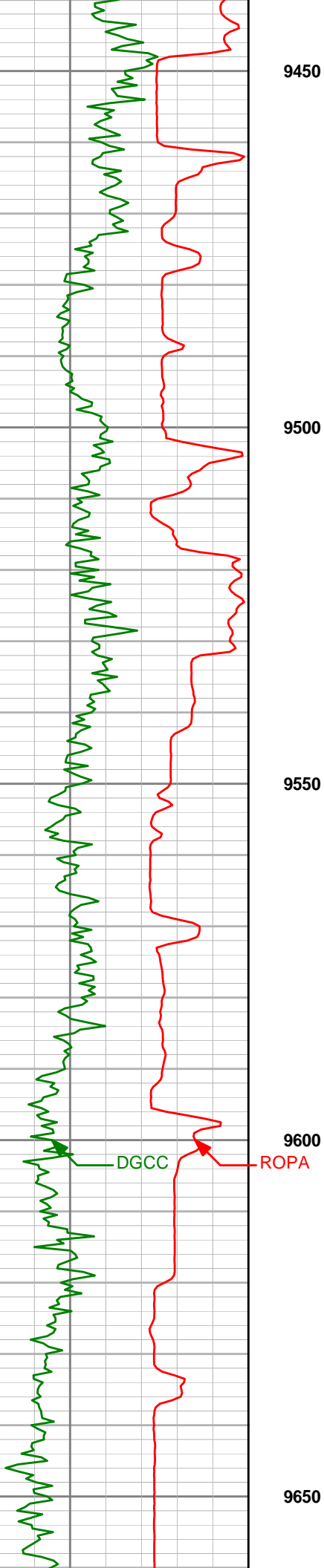


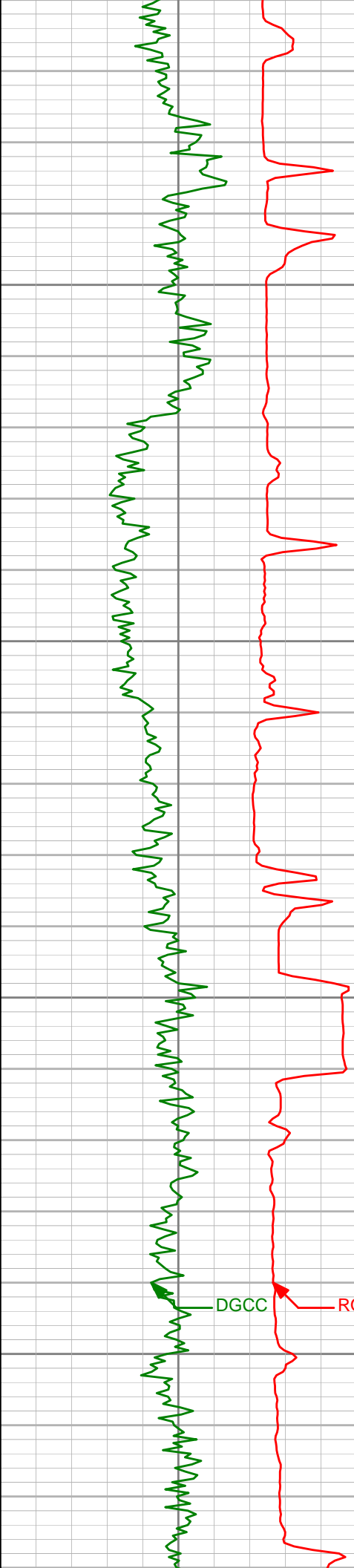
R39PC

R15PC

EWXT

C39PC





9700

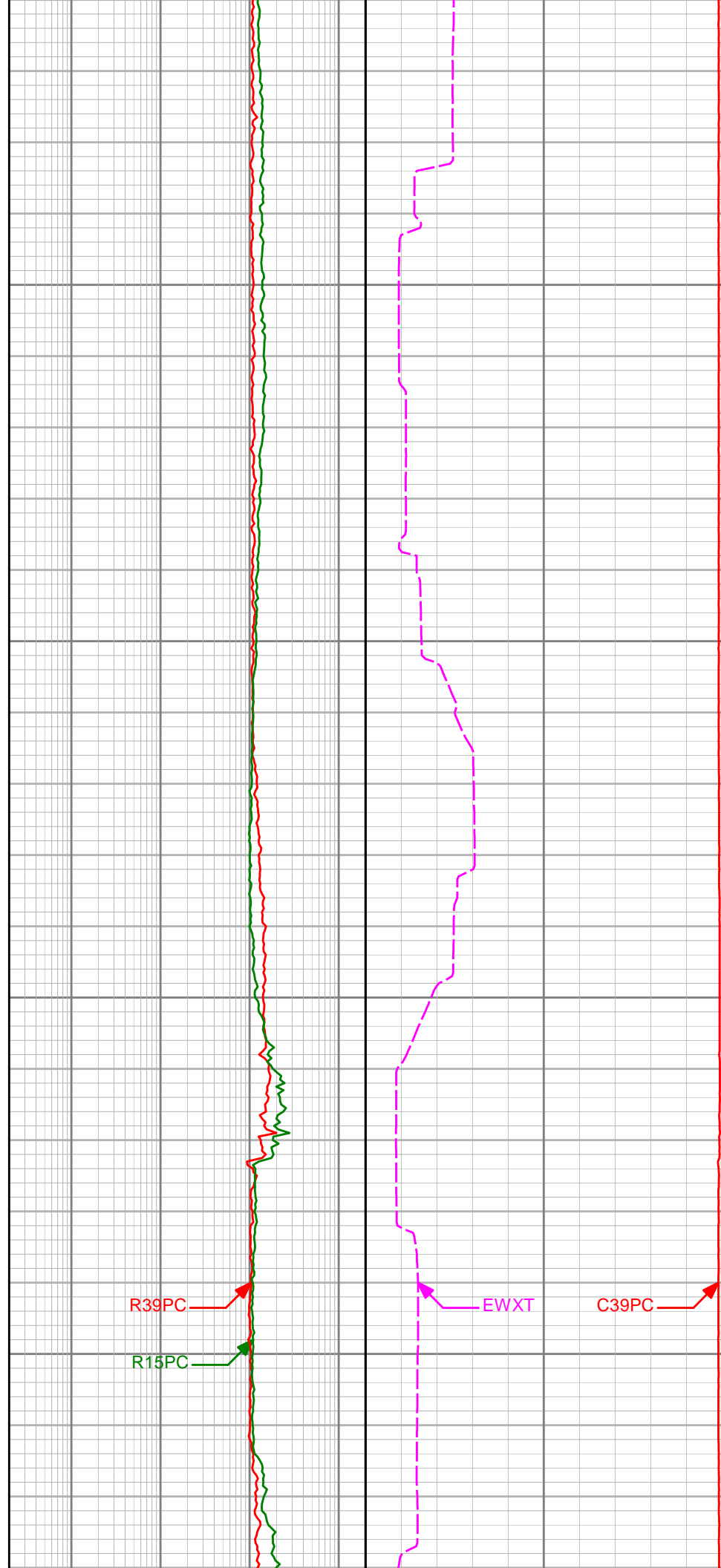
9750

9800

9850

DGCC

ROPA



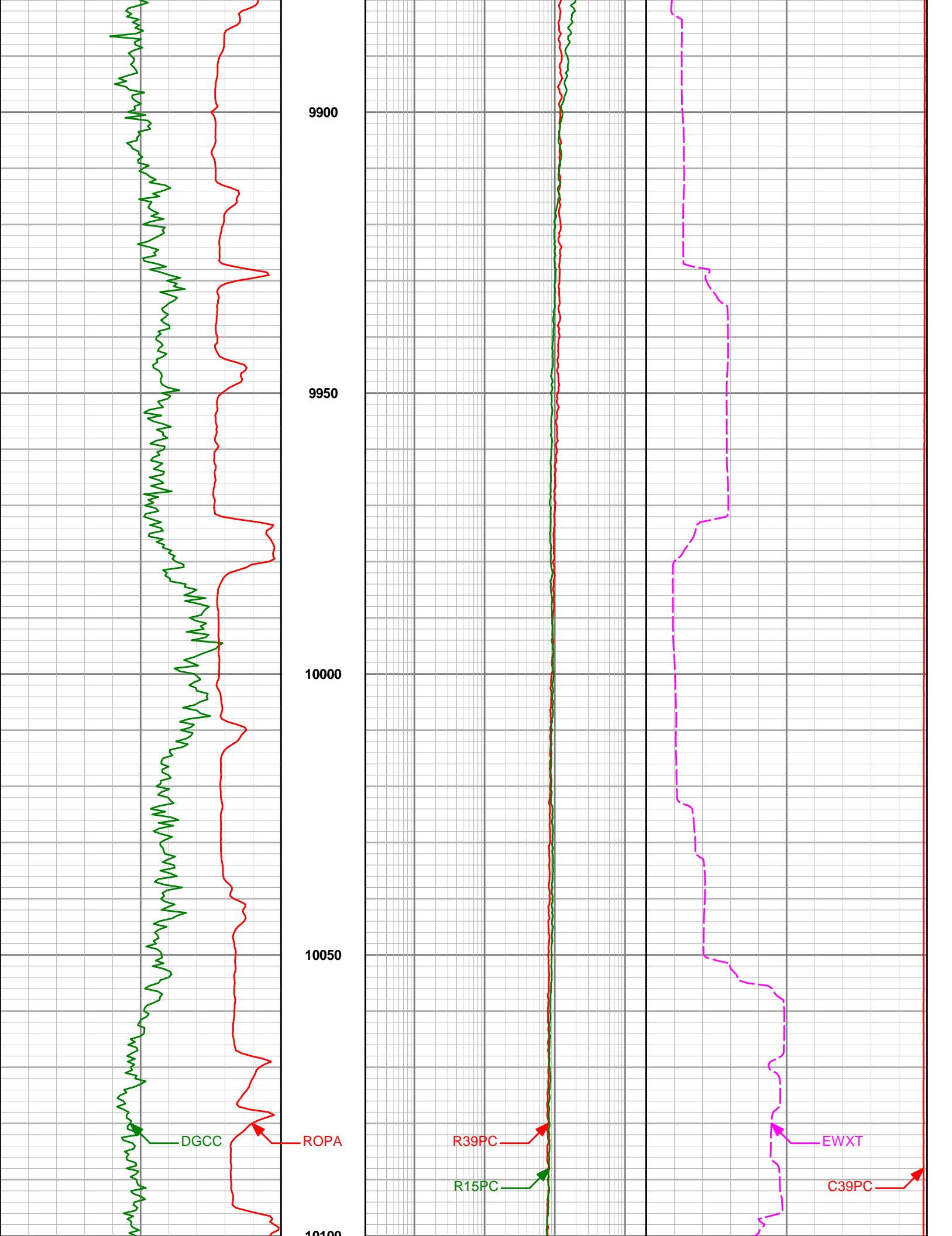
R39PC

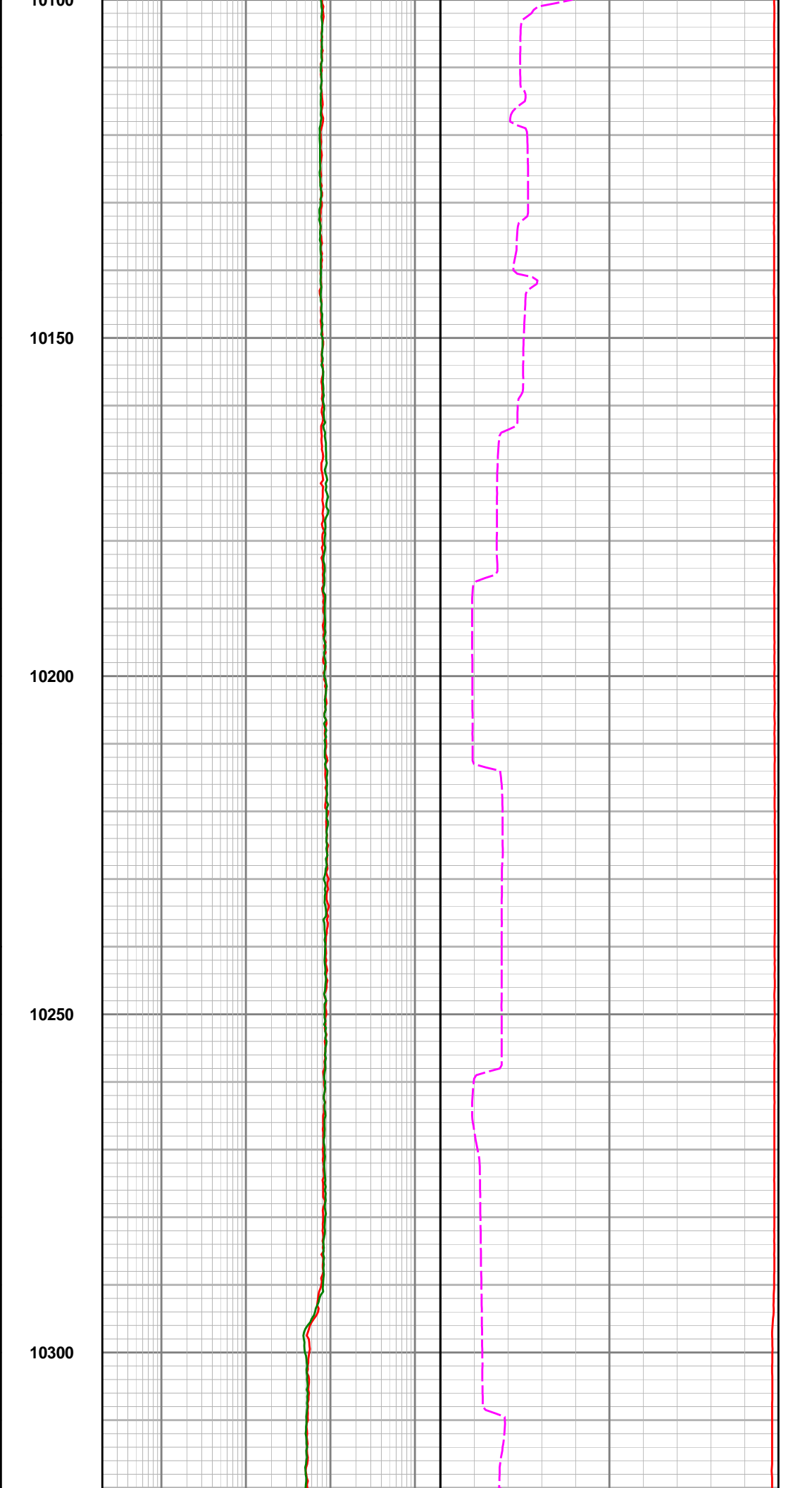
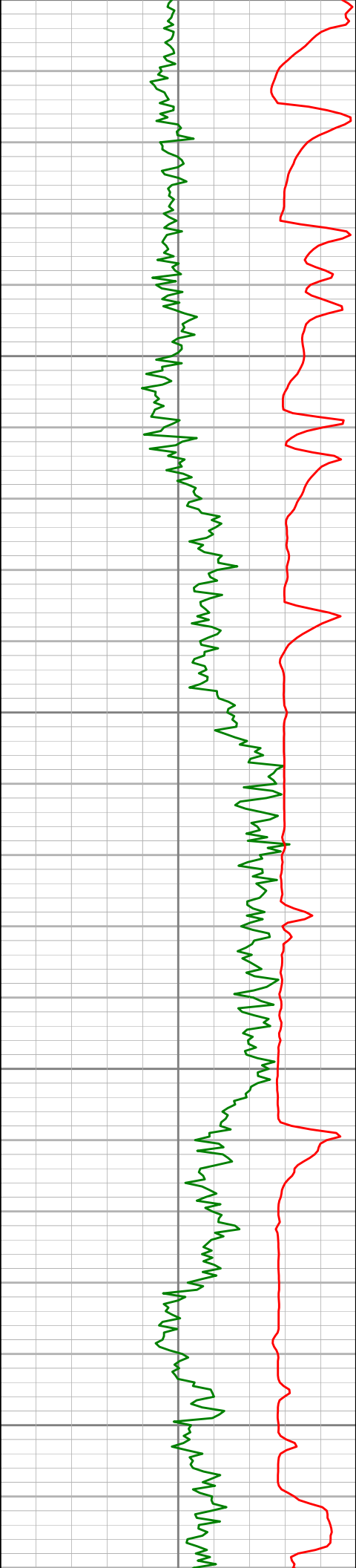
R15PC

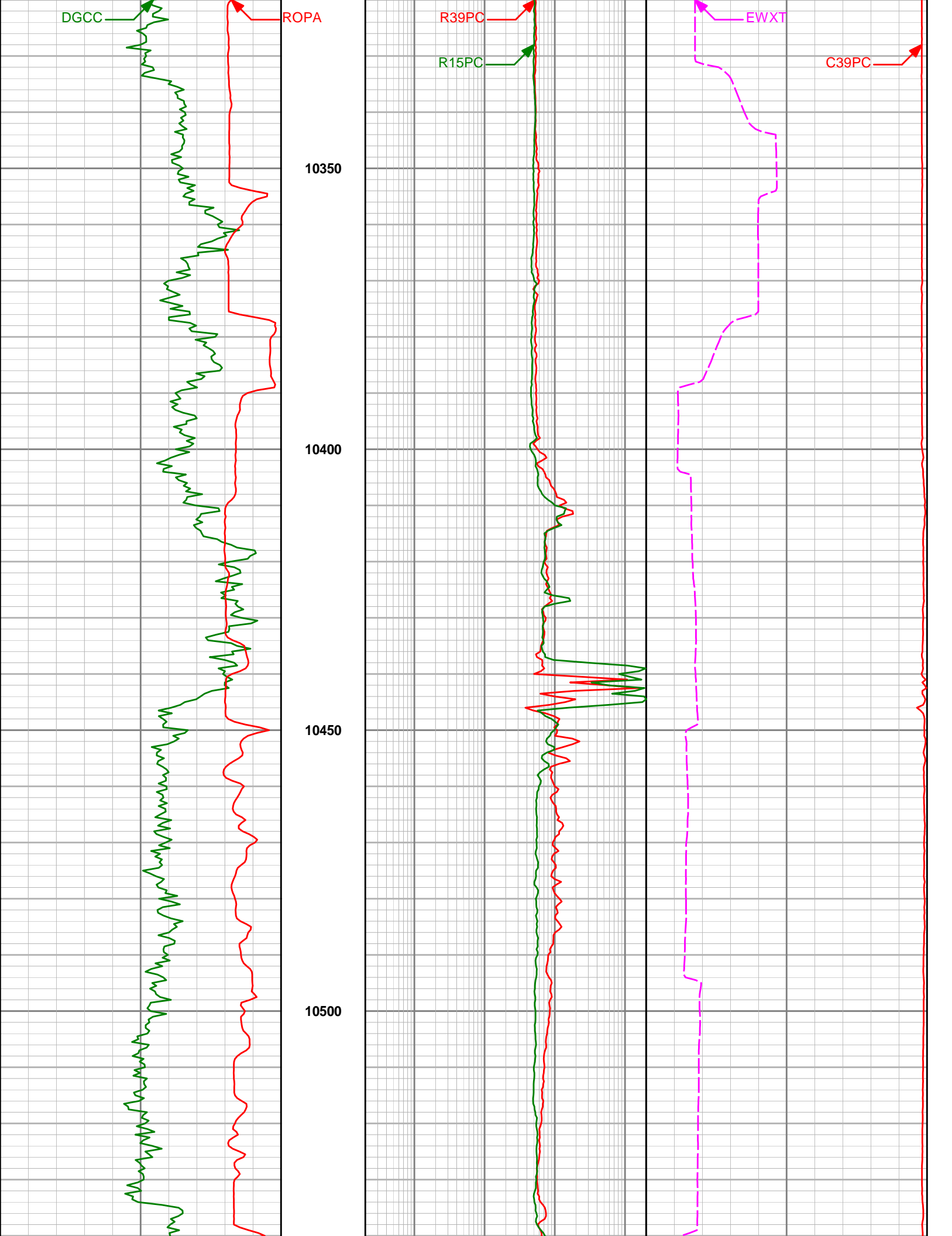
EWXT

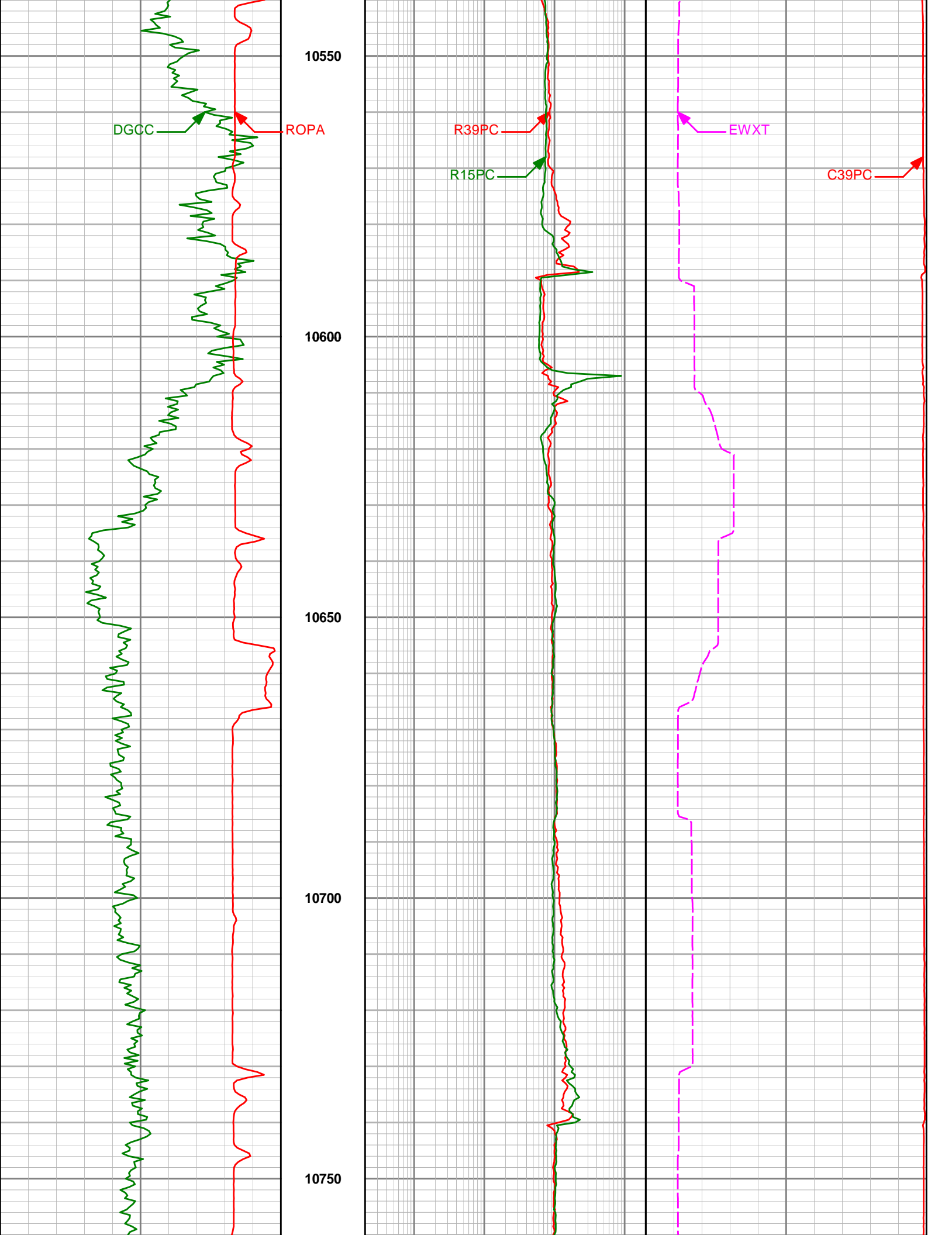
C39PC

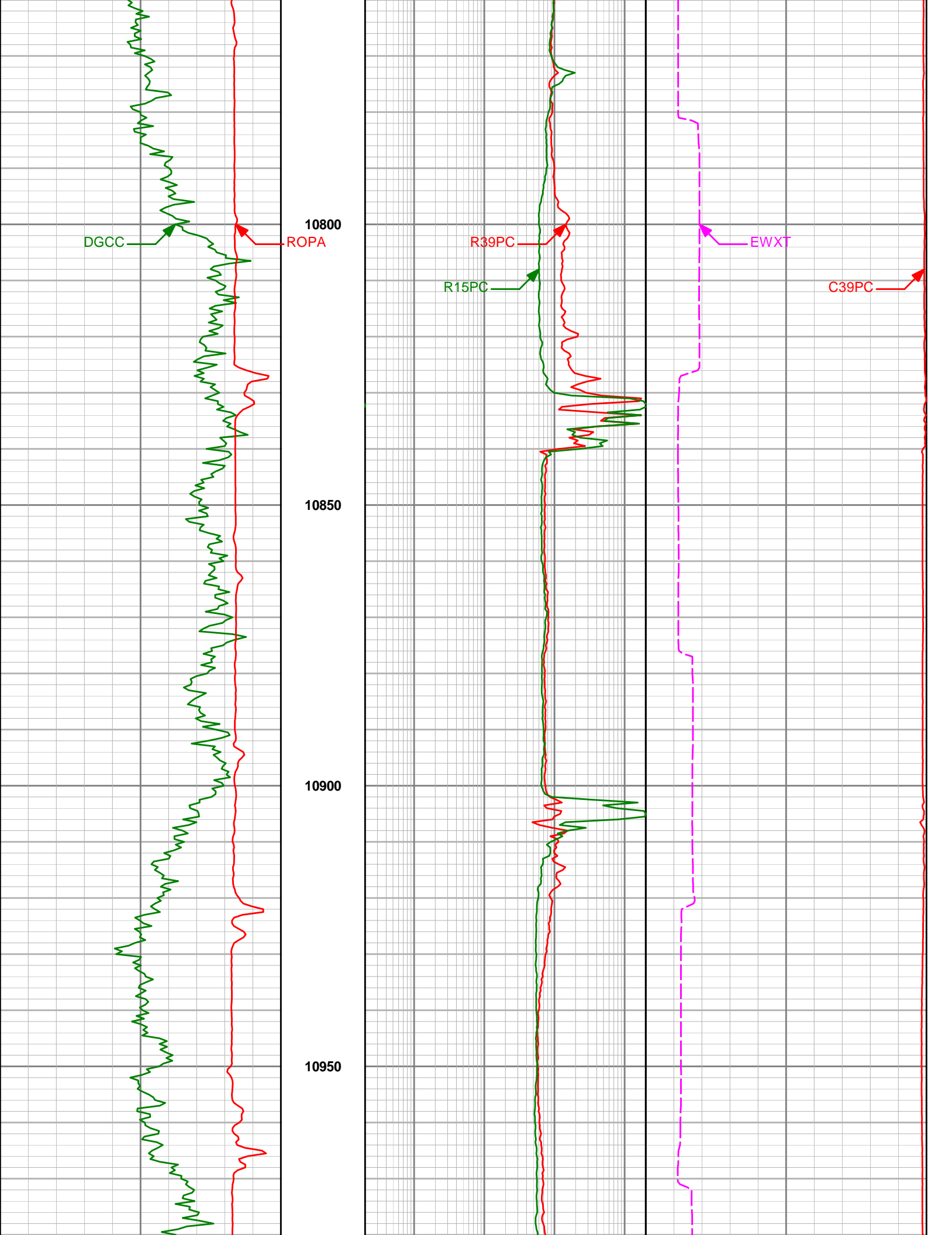


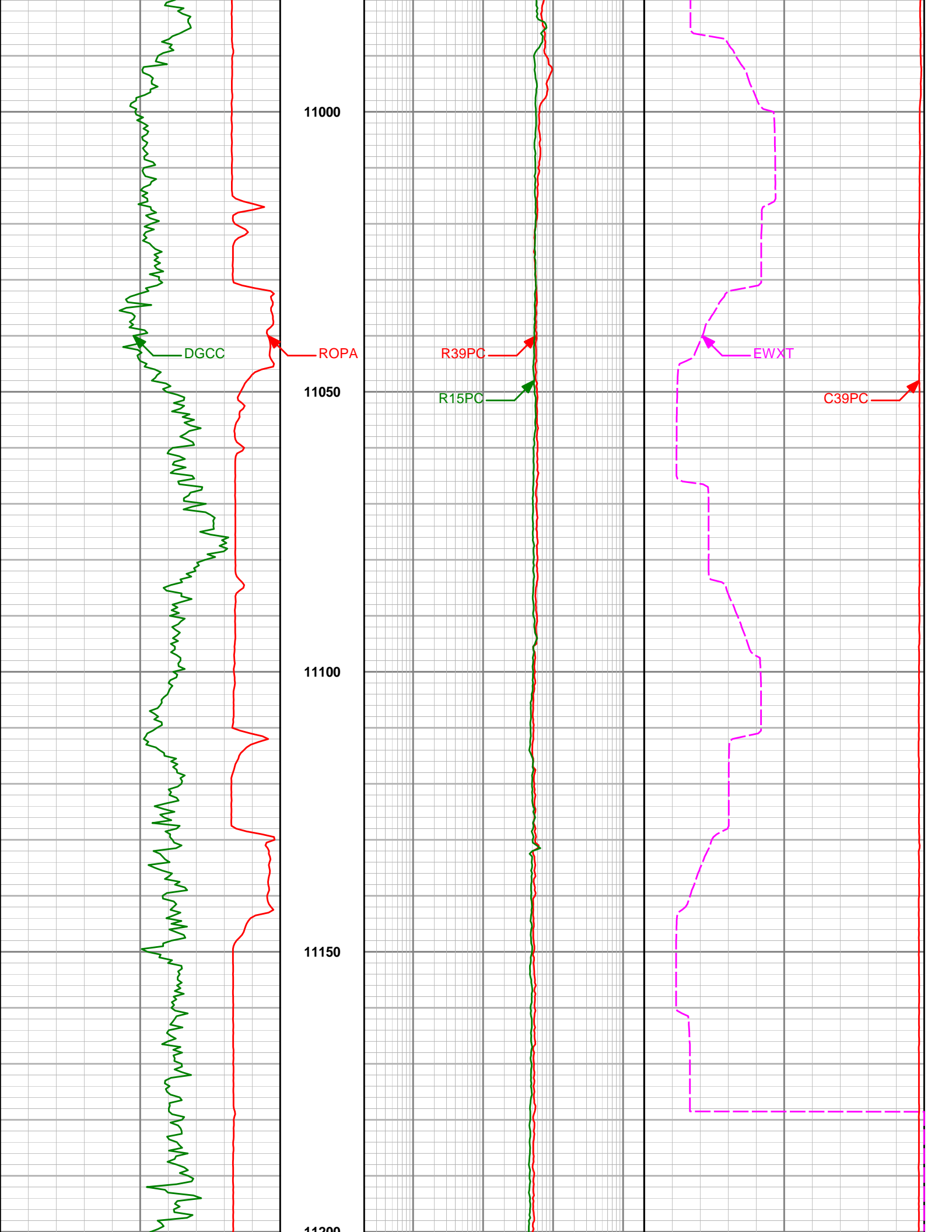


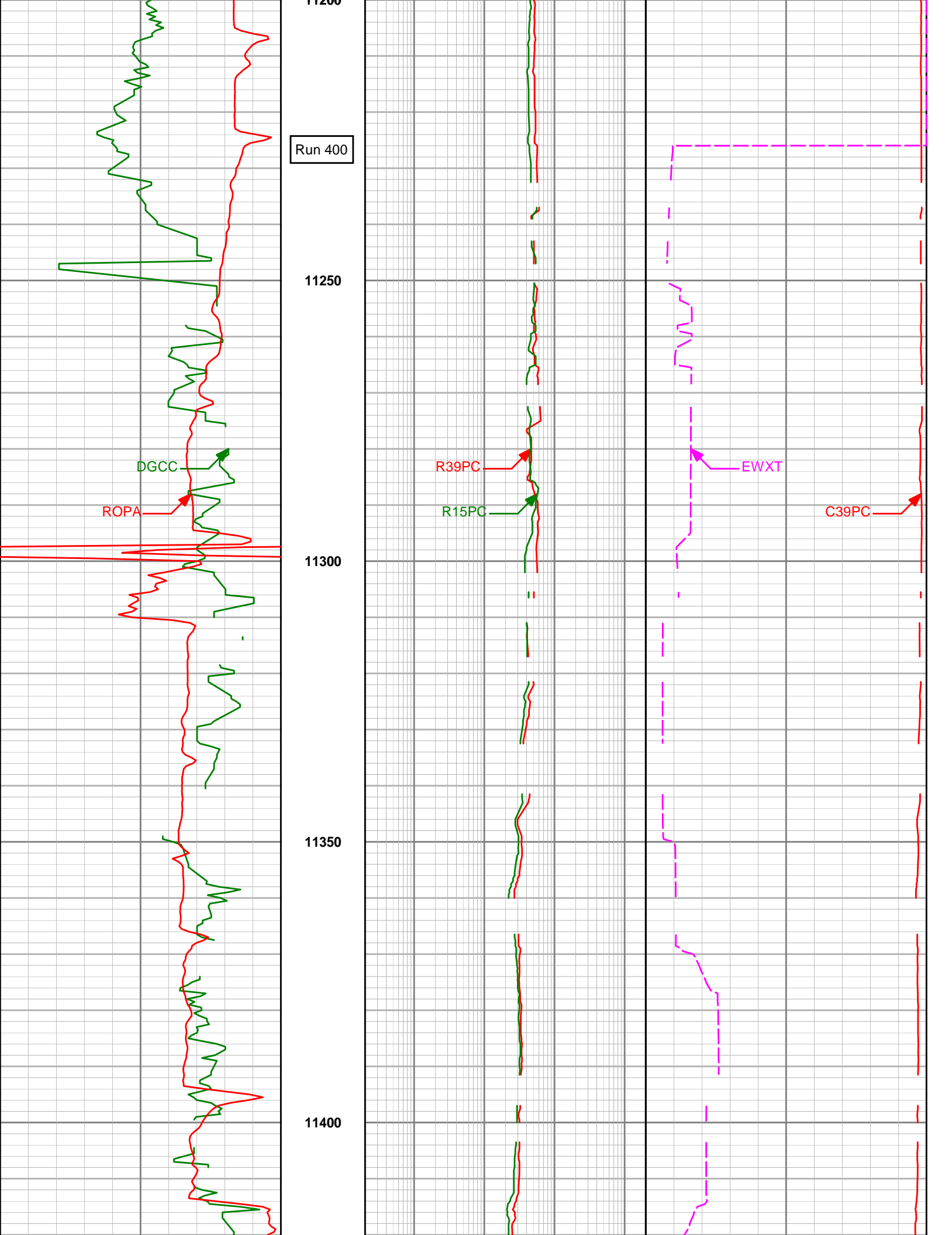


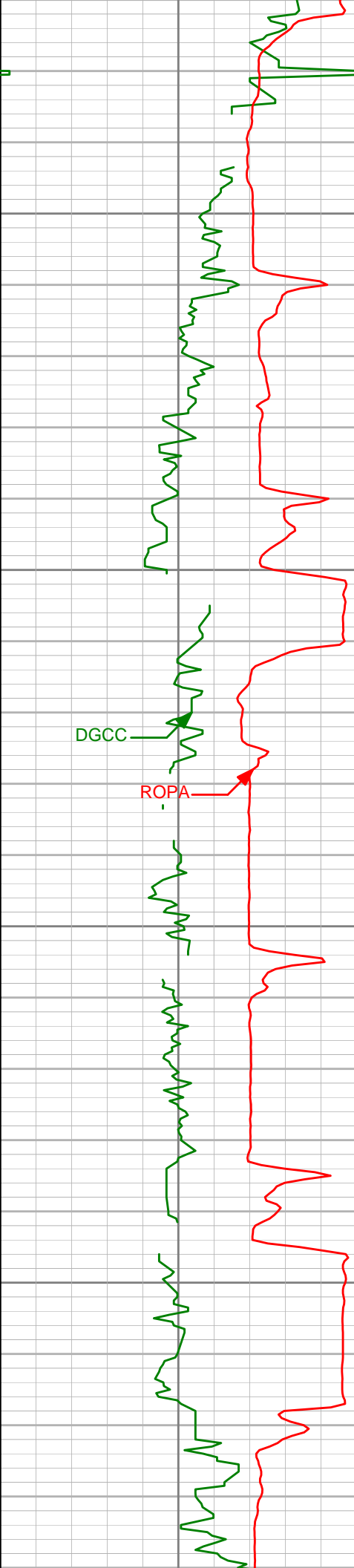












11450

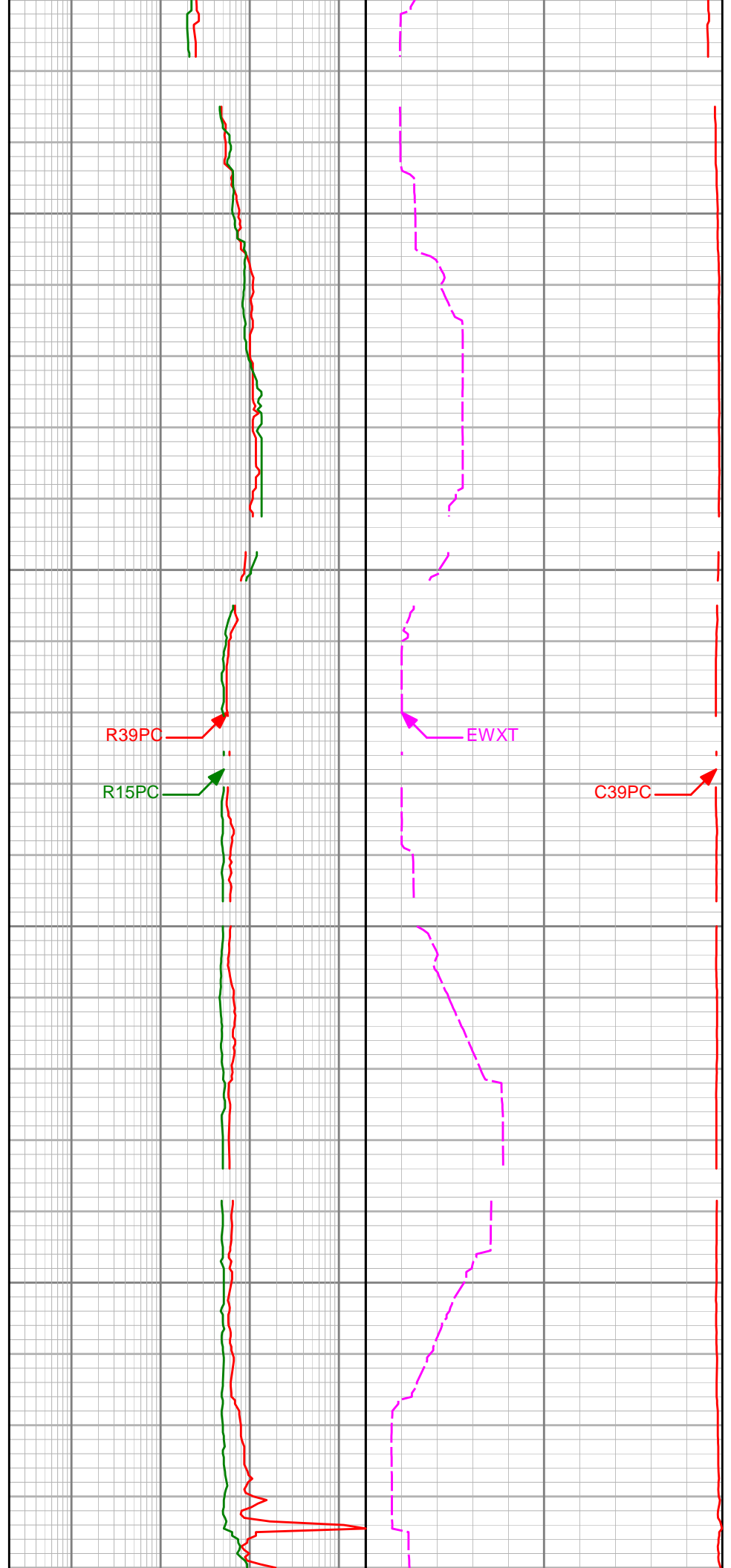
11500

11550

11600

DGCC

ROPA



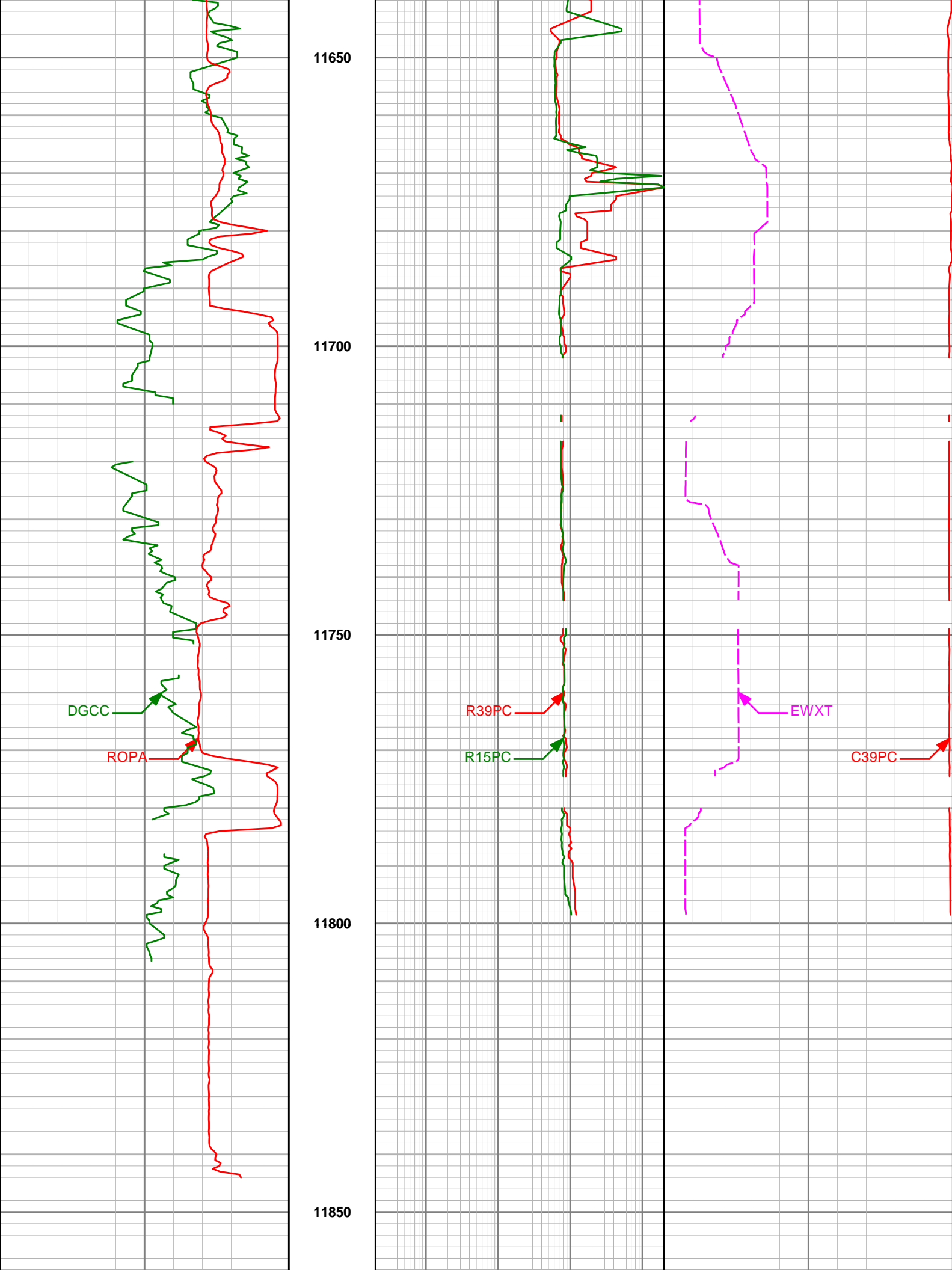
R39PC

R15PC

EWXT

C39PC





|  |     |              |   |    |   |
|--|-----|--------------|---|----|---|
|  |     |              |   |    |   |
| <b>DGR Comb Gamma Ray BCorr</b><br><b>(DGRCC)</b><br>api       |     | <b>Depth</b> | <b>15in Phase Resistivity BC</b><br><b>(R15PC)</b><br>ohm-m |    | <b>39in Phase Conductivity BC</b><br><b>(C39PC)</b><br>mmho/m |
| 0  | 200 |              | 0.2   | 2K | 1000  |
| <b>Avg Rate of Penetration</b><br><b>(ROPA)</b><br>feet per hr |     |              | <b>39in Phase Resistivity BC</b><br><b>(R39PC)</b><br>ohm-m |    | <b>EWR Formation Exp Time</b><br><b>(EWXT)</b><br>hours       |
| 500  | 0   |              | 0.2   | 2K | 0   |