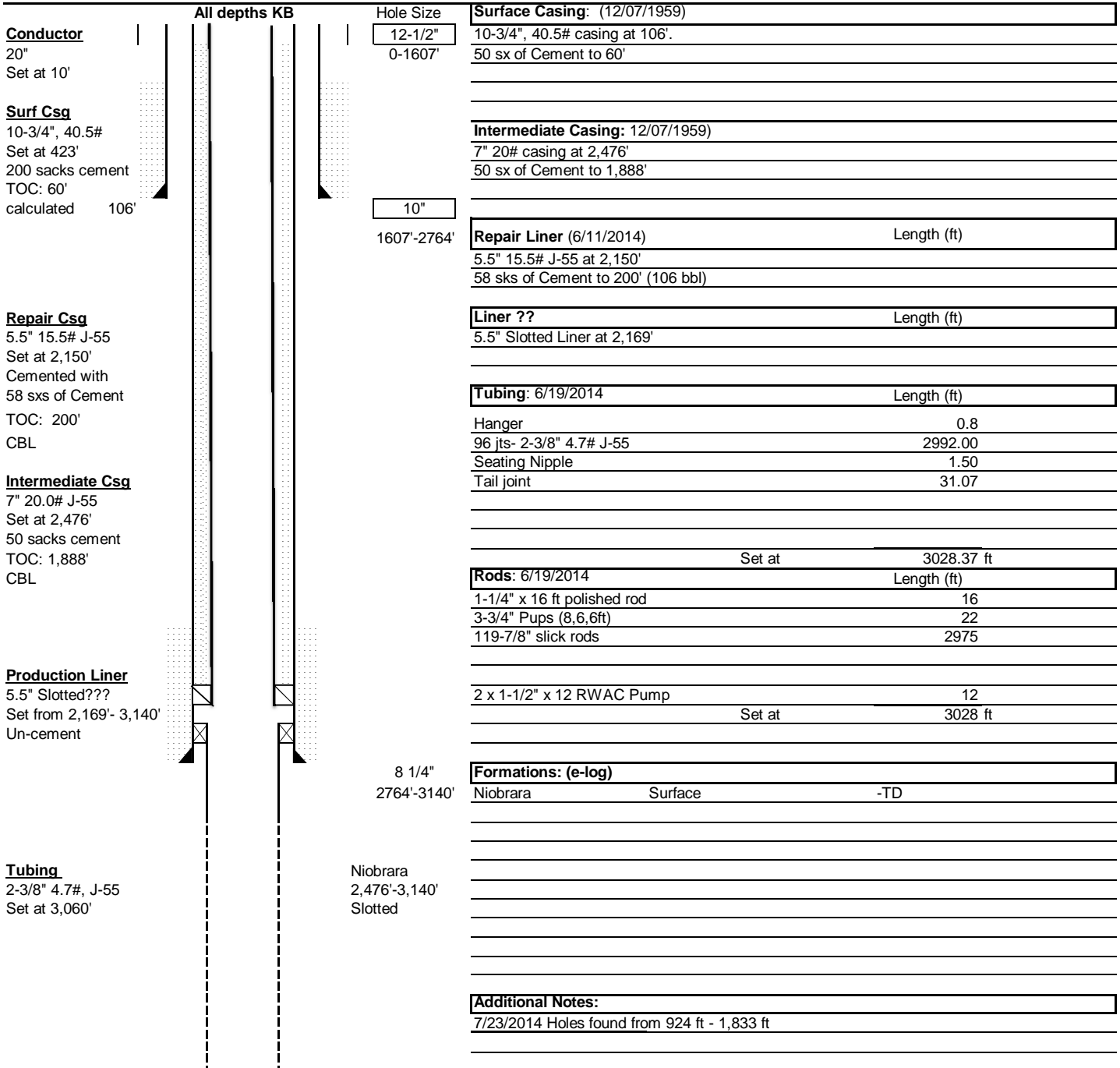


Wellbore Schematic

Date Prepared:	7/16/2014
Last Updated:	6/19/2014
Spud Date:	9/11/1926
Completion Date:	2/12/1927
Last Workover Date:	6/16/2014



Site Facility Diagram



PJ



wellhead

REMARKS:

Map not to scale.

Updated 8/8/2011 - HT

This lease is subject to the site security plan for Robert L. Bayless, Producer LLC. The plan is located at:

Robert L. Bayless, Producer LLC

PO Box 168

368 NM Highway 170

Farmington, NM 87499

Robert L. Bayless, Producer LLC

GOV'T POHLMAN #1

225' FNL & 260' FWL

Section 15, T4N, R91W

Moffat County, CO

Lease No. COD033221B

ROBERT L BAYLESS, PRODUCER LLC
PO Box 168
Farmington, New Mexico 87499
505-326-2659
505-326-6911 fax

Workover Summary Log

12/7/1959

Well Re-entered. Plugs Drilled and Casing run cemented as Niobrara

10/4/2007

Strip well and change pump

7/1/2009

Strip well and change pump

12/12/2013

Test casing and find holes in 7 inch. Run 4.5" liner to repair holes and test.

6/19/2014

Cement 5.5" Casing and repair holes. Return to production.