



Justin Carlile
Regulatory Supervisor, RBU
ConocoPhillips Company
600 North Dairy Ashford
Houston, TX 77079-1175
Phone 281.206.5770

July 16th, 2014

Colorado Oil and Gas Conservation Commission
The Chancery Building
1120 Lincoln Street, Suite 801
Denver, CO 80203

Re: NOAV 400624186

Ladies and Gentlemen:

In reference to the Notice of Alleged Violation # 400624186, issued on 6/12/2014, we would like to inform you that the Corrective Actions requested have been implemented. Specifically, below it is a description of the actions taken:

1. Alleged Violation 1 "On April 22, 2014 a fire occurred at this location when produced oil was sent directly to the flare and emission control burner": as indicated in the NOAV, the corrected action was satisfied on 6/3/2014. ConocoPhillips submitted a communication to COGCC with a detailed explanation of the evaluation of the cause of the system failure and plans to prevent fires and threats to public health, safety, welfare, and the environment at Conoco Phillips locations.
2. Alleged Violation 2 "Safety system failure allowed oil to transfer directly to the flare and emission control burner." The Corrective Action required a report to Commission that provides detailed description of Conoco Phillips' maintenance and integrity testing program including operator training. The report is hereby submitted and attached to this letter

ConocoPhillips Company believes that the corrective actions described in this letter fulfill the requirements made by COGCC. Should you have any questions, or need additional information, please do not hesitate to contact me at 281-206-5770.

Sincerely,

A handwritten signature in black ink that reads "Justin Carlile".

Justin Carlile

Maintenance and Integrity Program

The Maintenance and Integrity Program consist of several components to ensure the reliability of the safety critical components installed in the facility.

ConocoPhillips has established a HSE Management System that defines the procedures to be followed in its installations to maintain a safe and environmentally sound operation. Following this system, the asset conducts and documents a Pre-Startup Safety Review (PSSR) and communicate to affected employees that a facility is safe for operation. A PSSR ensures that a new facility, or change to an existing facility, is properly installed, relevant procedures have been updated and training given prior to startup and is safe for operation. A copy of the PSSR conducted for the Tebo 33-1H is attached as reference. The Management System also establishes the training requirements for the personnel for each specific role. The operator responsible of maintenance of the Tebo 33-1H was trained in the required procedures. The training records are attached as reference.

A specific Niobrara SCD Maintenance Plan is in place. The plan includes that daily inspections and yearly preventive maintenance are conducted. A copy of the plan is attached.



Additionally, ConocoPhillips conducted an investigation to identify the root cause of the fire incident. It was determined that unexpected Paraffin buildup on high level float switch on VRT prevented switch from operating properly. Additional corrective actions were identified and plans are in place to incorporate these measures to the facility design. A presentation that contains a detailed description of the corrective actions and plans is attached.

Attachments:

Tebo 33-1H PSSR

Training records

Niobrara SCD Maintenance Plan

 MCBU - ROCKIES	Approved By:	Revision No.	Revision Date:	Page Number: 1 of 2 
		0	12/3/2010	
Equipment Specific Maintenance Strategy	Authored By:	Review Frequency:	Criticality Rank	
		Yearly	High	

Strategy Title:

Instrument Switches

1.0 APPLICATION

This strategy applies to Instrument Switches with the designated ranking listed above. The ranking given to this piece of equipment, is governed per the asset Criticality Assessment Tool.

2.0 SAFETY, HEALTH AND ENVIRONMENT

First and foremost " Our work is never so urgent or important that we can not take the time to do it safely." This creed echos to the core of our philisophy, place your life and the life of others upon the pedestal of conciousness, that supercedes selfishness and lack of concern for others. All applicable HSER procedures and policies will be followed with strict adhereance.

For frequencies of less than a month (daily, weekly), all prevenative maintenance checks are to be done while the equipment is operating. Ensure that all applicable procedures are followed during these checks.

Submit an SAP M1 notification for any required maintenance repairs.

When possibel take readings before equipment is scheduled for repairs or maintenance.

3.0 OPERATIONS

A. Daily

1. Monitor operation of end device.
 - a. Instrument switches are functioning.
 - b. Integrity of the instrument switch and its sampling of the process is adequate.

4.0 PREVENTIVE MAINTENANCE

A. Yearly

1. Verify the end device for proper function
 - a. Switch will display and perform its operational designations.
 - b. Switch will operate within its specified tolerances.

B. Major Maintenance

1. Major maintenance will be performed upon the failure of the device, and will require the correct procedural steps be taken, to ensure operational integrity is maintained during the absence of the instrument switch.

4.0 CORRECTIVE MAINTENANCE

A. Corrective Maintenance repairs will be made A.S.A.P. (As Soon As Planned)

5.0 OPTIMIZATION

A. An evaluation will be performed to determine if the instrument switch is maintaining an acceptable operation history. Adjustments will be made as necessary. (MOC is required for changes)

6.0 ASSOCIATED EQUIPMENT

A. Auxiliary

- Wiring
- Conduit
- Mounting brackets
- Process to instrument clusters
- Tubing
- Heat trace
- Power supply



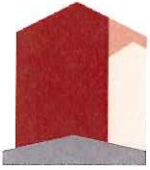
Tebo 33-1H Oil to Flare

Resulting in Fire

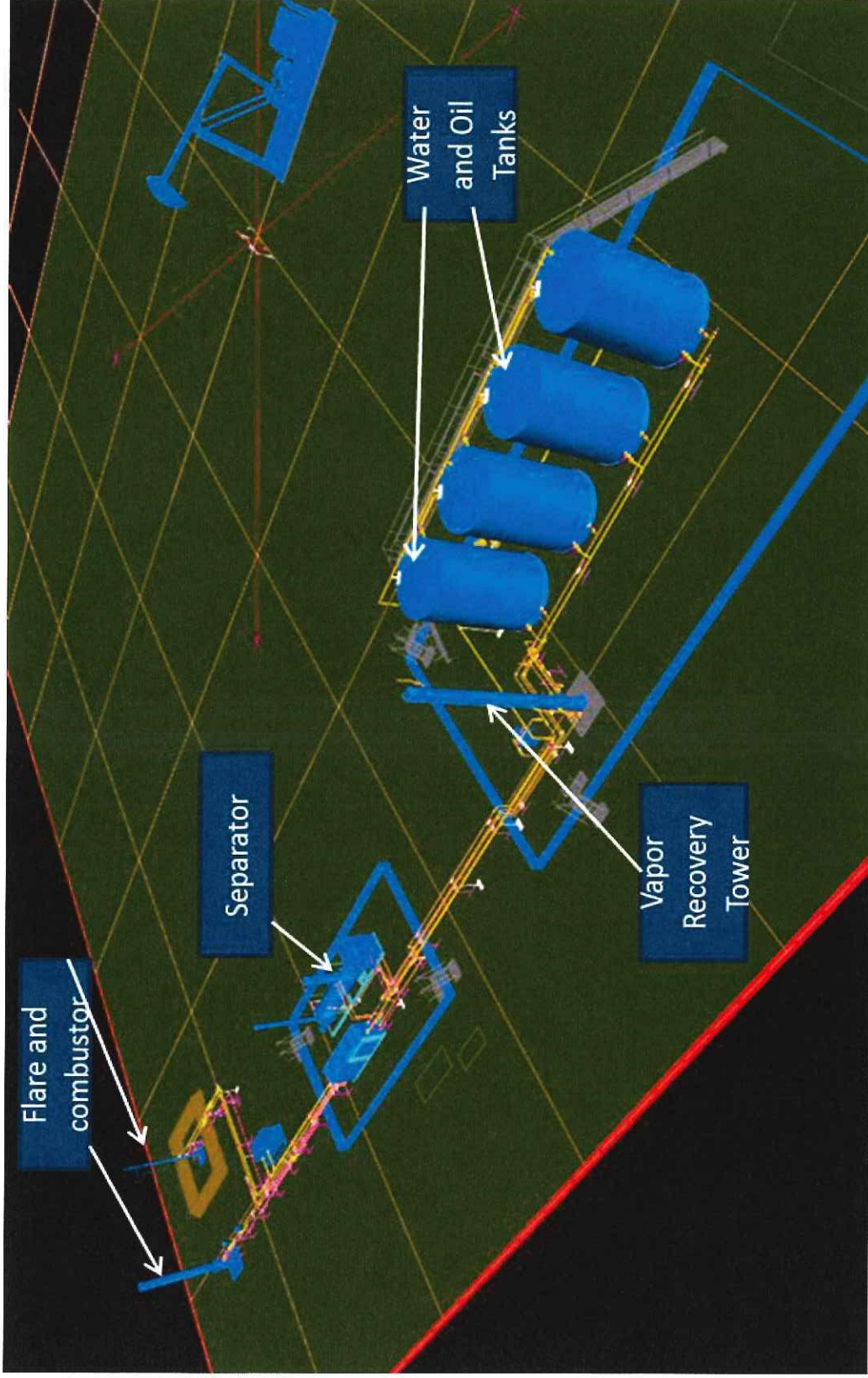
Rockies Business Unit – Niobrara Asset

Incident Investigation

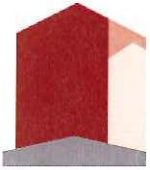




Single Well Site Facility Layout



Tebo 33-1 was commissioned 10/31/13



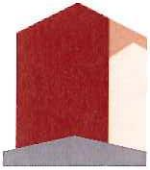
Root Cause & Causal Factors

► Oil to Flare Resulting in Fire

Root Cause: Paraffin buildup on high level float switch on VRT prevented switch from operating properly.

- Corrective Action 1: Replace all pathway switches with tuning fork indication on Vapor Recovery Towers. (Facility Engineering & Maintenance Supervisor) - **COMPLETE**
- Corrective Action 2: A redundant safety device will be installed on all Vapor Recovery Towers (such as a DP Cell) as a second form of level indication and safety shutdown. (Facility Engineering & Maintenance Supervisor) - **In Progress**
- Corrective Action 3: Install a knockout w/automated pump and high level shutdown device on the line to the combustor/flare. (Facility Engineering & Maintenance Supervisor) - **In Progress**



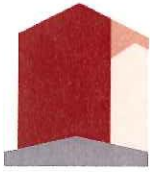


Physical Evidence

High level float switch from Tebo 33-1 VRT w/paraffin buildup that prevented the switch from working properly.

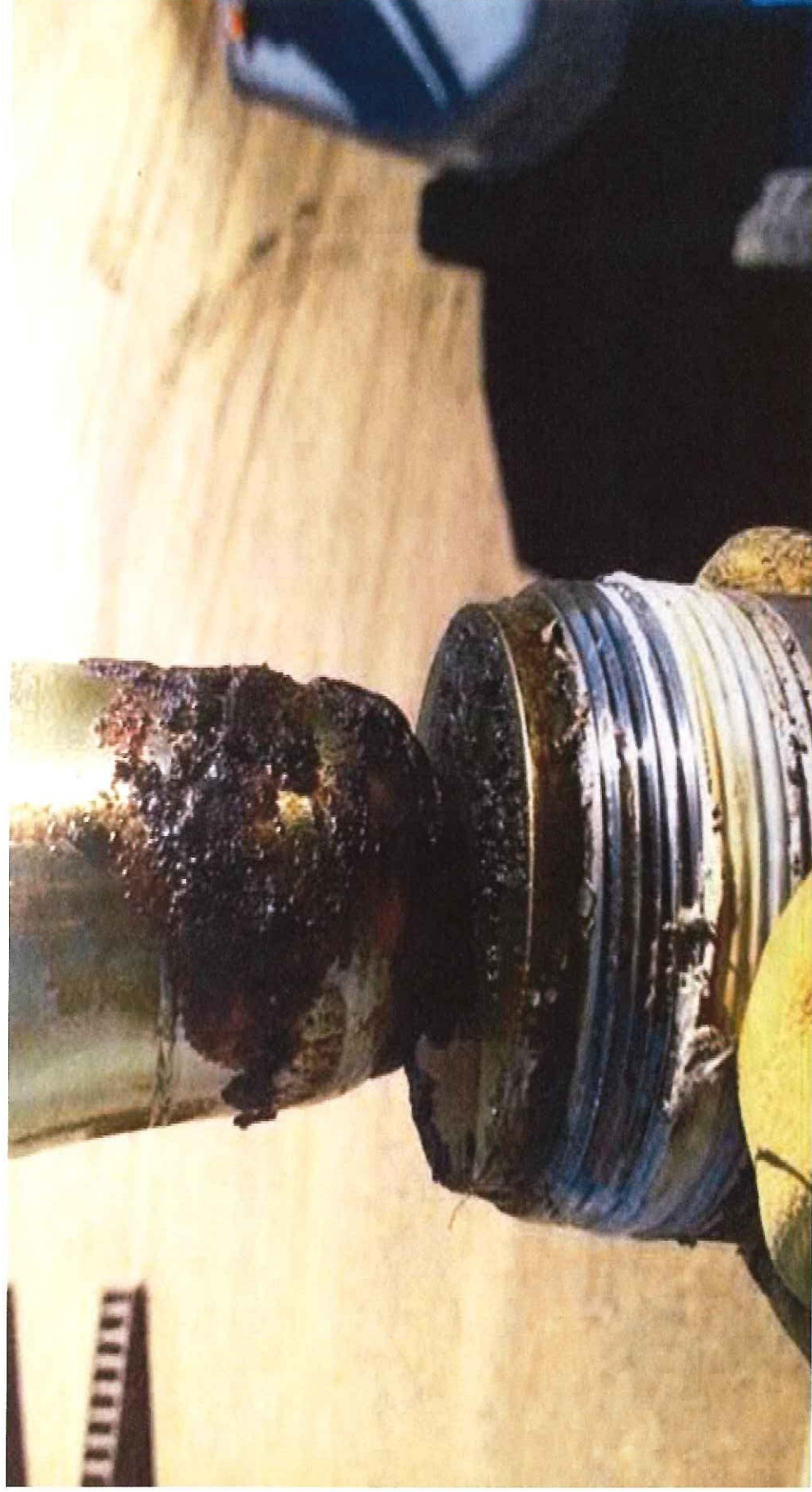


Paraffin was not expected up at the High level float switch

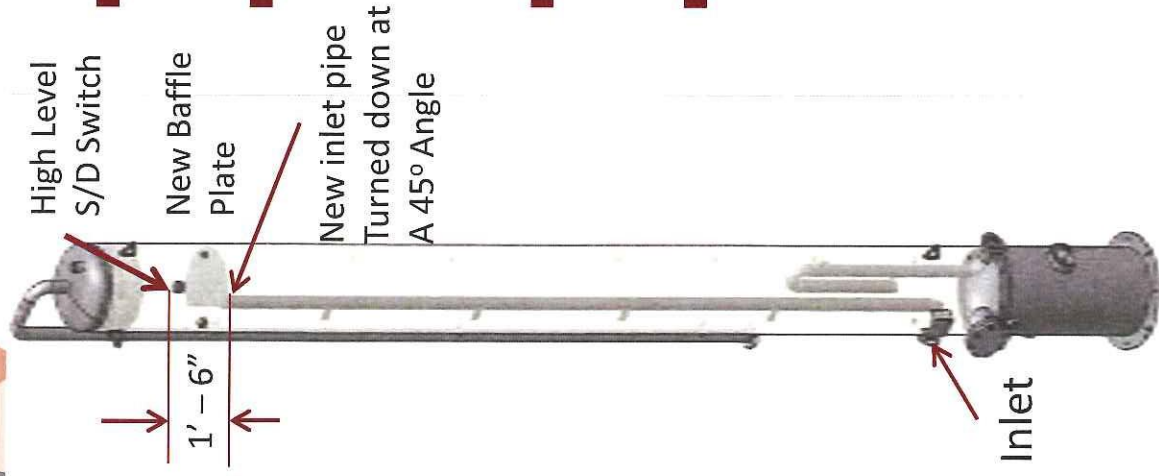


Immediate Corrective Actions

- Inspect and test all Vapor Recovery Tower level switches.
Completed April 25, 2014.

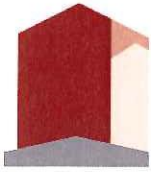


Design of the Well Site Facilities



PH: 1914100
 CORCO VIB - VERT - 2400 x 11.6 x 1 - 24.8

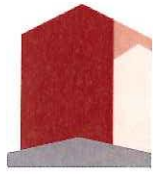
- Original design did not expect significant paraffin in the oil
- Each of the control components were tested at and verified prior to start up.
 - Pre Start up Safety Review (PSSR) conducted prior to commissioning
- Redesign of the VRT internal to ensure paraffin does not get to the shut down switch
- Safety Critical Preventative Maintenance Checklist is developed



Corrective Action

Change out float type high level devices with tuning forks for increased reliability in oil streams with paraffin content.

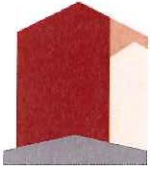




Corrective Actions

#	Related Causal Factor	Action Item Description	Responsible Person	Due Date
1	High level float switch in VRT failed.	Test High Level Float Switch in VRTs on all existing facilities.	Maintenance Supervisor	5/9/2014
2	High level float switch in VRT failed.	Replace all pathway switches with tuning forks in VRTs.	Facility Engineering & Maintenance Supervisor	5/15/2014
3	High level float switch in VRT failed.	Install redundant safety device on all Vapor Recovery Towers (such as a DP Cell).	Facility Engineering & Maintenance Supervisor	8/1/2014
4	Oil carried over to combustor & flare causing ground fire.	Install a knockout w/automated pump and high level shutdown device on the line to the combustor/flare.	Facility Engineering & Maintenance Supervisor	10/1/2014





Tuning Fork in Operation

Paraffin buildup on tuning fork caused device to shut down facility on VRT high level.



Attachment B—Pre-Startup Safety Review Form

Section I Installation Pre-Startup Safety Review

A review by the construction supervisor and the applicable craft leads to verify that the facility is built in accordance with the approved design and/or drawings.

MOC / CAF No. 15599722

Date Work Complete: 05/2/14

Supervisor: Keith Bailey

Facility/Location: Tebo 33-1H

Construction Supervisor: Travis Boss


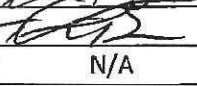
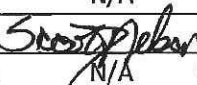
Title of Work:

Tebo 33-1H Change out Path-way switch with tuning fork

Work Description: (attach approved drawings, P&ID, Safe Charts, etc.)

Change out Path-way switch with tuning fork on the VRT.

By signing below, I confirm that all work complies with approved design, drawings and documentation

Craft	Name	Signature	Date
Construction supervisor	Travis Boss		05/02/14
Mechanical	Travis Boss		05/02/14
Electrical	N/A	N/A	N/A
Instrumentation	N/A	N/A	N/A
HSE	N/A	N/A	N/A
MSO	Scooter Nelson		05/02/14
Others (A&OI, Engineering as needed):	N/A	N/A	N/A

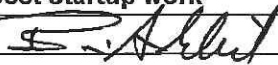
Section II Operations Pre-Startup Safety Review

Verification that the facility is acceptable for startup (Yes / No) in (Full / partial condition) along with any requirements noted in following pages. Use attached check lists in Section III for complete review.

Full startup ☒ Partial startup ☐ (Attach description of post-startup punch list items to be completed - Attachment C)

Responsible for post-startup work

Completion date

Startup approved 

Date

5/5/2014

Section III

Operations Pre Startup Safety Review Check list		C- Critical NC - Not Critical to startup N/A Not applicable	Yes	No C or N/C	N/A
1	Risk assessment(s) completed and recommendations for identified hazards resolved and implemented?		Yes		
2	Structure & Siting				
	-Lighting been checked at night for adequacy?				N/A
	-All dykes and areas with access restrictions, provided with cross over platforms?				N/A
	-All platforms and gratings fastened securely?				N/A
	-Is there adequate capability for egress from platforms?				N/A
	-All stairs, ladders, cages, etc., installed correctly and secure?				N/A
	-Pinch points / trip points been identified, remedied, painted?				N/A
3	Process equipment				
	-Relief valve set at or below the MAWP of equipment stamped in nameplate?				N/A
	-Equipment support or foundation anchor bolts tightened and secure?				N/A
	-All screens, orifices, filter elements, catalyst, etc in place for operation?				N/A

Operations Pre Startup Safety Review Check list		C- Critical NC - Not Critical to startup N/A Not applicable	Yes	No C or N/C	N/A
	-All equipment valves, louvers, dampers, etc. been installed and operation checked?				N/A
	-Equipment free of damage and debris (check if access is readily available to see inside)?				N/A
	-Manway and nozzle bolts tightened and properly secured?				N/A
	-Equipment properly boxed up?				N/A
	-Valves readily accessible, handles free from obstructions and/or insulation?				N/A
4	Process Piping				
	-All field changes, if any, during construction been reflected on the redlined P&IDs?				N/A
	-Components that are flow-dependent (i.e. control valves, check valves, orifice plates, etc) installed properly and flow direction verified?				N/A
	-Lock open and lock closed valves have been inspected and are properly secured in their intended position, and verified against approved drawings/documentation?				N/A
	-Valves requiring frequent use, checked for accessibility & operations?				N/A
	-Piping has adequate high point vents / low point drains to allow for start-up & shutdown?				N/A
	-Construction blinds have been removed and figure 8 blinds in their correct positions for start-up?				N/A
	-Process System leak checks completed?				N/A
	-Purge complete?				N/A
	-Drains have been inspected for blockage?				N/A
	-Pipe hangers, supports, or guides been adjusted or are they touching grade?				N/A
	-All lines properly labeled and flow direction marked?				N/A
	-Service tests performed on all utility systems?				N/A
	-Does small bore piping have adequate bracing?				N/A
5	Electrical				
	-All equipment verified to comply with electrical area classification?	Yes			
	-Equipment and structures grounded?	Yes			
	-Are all electrical conduits port end sealed?	Yes			
	-Start/stop buttons, emergency stop buttons verified and properly labelled.	Yes			
	-Electrical breakers and junction boxes checked, labeled, and numbered?	Yes			
	-Cables are adequately supported and protected?	Yes			
6	Instrument				
	-Temporary supports, protective shipping brackets, plastic plugs, and packing have been removed from controllers, instruments, and other equipment?				N/A
	-Fail-safe actions have been verified?				N/A
	-Verify Actual device function tests (alarm and shutdown) are complete?				N/A
	-Safety and control devices are calibrated, set, and operate properly?				N/A
	-Verify that communication system is tested?				N/A
	-Local temperature, pressure and level indications easily viewable and of the correct span/range for the intended operation?				N/A
	-All instruments been properly identified and tagged?				N/A
	-Air supplies to transmitters and/or control valves are verified open and undamaged?				N/A
7	Mechanical				
	-All equipment been properly leveled and grouted?				N/A
	-Rotating equipment cold aligned, properly coupled, and checked for rotation?				N/A

Operations Pre Startup Safety Review Check list		C- Critical NC - Not Critical to startup N/A Not applicable	Yes	No C or N/C	N/A
	-Lubrication systems flushed and recharged with proper lubricant?				N/A
	-Equipment been tested and / or no load runs been completed?				N/A
	-Pre-service required by vendors performed? -Rotating equipment hot aligned / reverse aligned?				N/A
	-All spare parts been identified and ordered?				N/A
8	Vent and Relief system				N/A
	-Thief hatch & inline or end of line vent valves installed on tanks & set point verified?				N/A
	-Relief devices tested to verify set pressure and documented?				N/A
	-Are block valves which affect the operation of relief valves, sealed or locked in the open position?				N/A
	-Flame arrestors installed on vent lines connected to flares?				N/A
	-Are relief valves discharged up and away from personnel and equipment and a minimum of 7' above grade or the closest platform?				N/A
	-PSV discharge pipe drilled with 3/8" weep hole (review carefully, when equipment is inside building)?				N/A
	-Emission control equipment working properly?				N/A
9	Mechanical integrity				
	-Leak test and hydro test complete, documented, and filed?				N/A
	-Nondestructive examination (NDE) in accordance with construction code requirements?				N/A
	-Verify that aluminum, copper tubing and rubber hose not being used for hydrocarbon service?				N/A
	-Confirm that all hydrocarbon lines don't have all-thread nipples, one step reducing bushing, street-ells, brass valves?				N/A
	-Rerate tags been installed, MAWP adjusted and RV reset or replaced for de-rated equipment?				N/A
	-Pressure vessels, FGS, RV's, Tanks, SCE, etc., added to SAP registry?				N/A
	-Pressure vessels, FGS, Tanks, Mfr. Data reports, etc., added to UPIPE or equivalent?				N/A
10	Corrosion Protection/Chemical Injection				
	-Corrosion coupons installed correctly?				N/A
	-Chemical injection points equipped with non-return valves, quills or atomizers (as applicable)?				N/A
	-External surfaces of pipes/vessels painted and pipe/equipment installed on supports/foundations?				N/A
	-All anodes installed and connected to the tanks or piping?				N/A
	-Insulating gaskets tightened to correct torque and installed with sleeves and washers?				N/A
	-External coating/wrapping for buried piping extending 12" above the soil to air interface?				N/A
11	HSE and regulatory				
	-Hazcom stickers applied to vessels, tanks, containers, chemical tanks, etc.?				N/A
	-Handrails, cages, and guards installed?				N/A
	-Safeguards installed: signs, fencing, wind socks, chains, painting, container labeling, and material safety data sheets (MSDS)?				N/A
	-Emergency response plan updated?				N/A
	-Utility equipment, fire-fighting equipment, and site protective equipment (SCBAs) are functional?				N/A
	-Personnel protective insulation applied?				N/A
	-State and federal notifications have been made (BSSE- BLM)?				N/A
	-Required DOT notifications have been made?				N/A
	-General housekeeping is acceptable?				N/A
12	Procedures				
	-Existing procedures been modified and/or new procedures written (including: startup, operation,				N/A

Operations Pre Startup Safety Review Check list		C- Critical NC - Not Critical to startup N/A Not applicable	Yes	No C or N/C	N/A
	isolation, and shutdown)?				N/A
	-Pipelines are registered in the One-Call system?				N/A
13	Environmental				
	-Permits (air, water, groundwater, storm water, National Pollutant Discharge Elimination System [NPDES]), as applicable, revised and/or approved?				N/A
	-Spill-prevention control and countermeasures (SPCC) updated?				N/A
	-Ongoing & recurring environmental regulatory requirements and permit stipulations are incorporated in the asset compliance assurance summary, SAP, EMIS, and SOP's as appropriate.				N/A
	-Operating and/or equipment data related to the new or modified equipment has been provided to HSE personnel for updating of the EMIS / OpsInfo database?				N/A
14	Training				
	-Operations personnel trained in startup, shutdown, and operation of equipment?				N/A
	-Operations, maintenance, and contract personnel been trained on changes (MSDS, evacuation, etc)				N/A
15	Other - For more detailed checklists to assist in performing PSSR readiness reviews, consider:				N/A
	- Checklists found in L48 Audit tool kits checklist (attachments of L48 14-HSE03-Pr)				N/A
	- A&OI RP - OneWiki site on PSSR				N/A

[illegible]

Person Status Report

Boss, Travis W

Current Roles

JOB ROLE NAME	FACILITY	COLLECTION	COMPETENCY	FAMILY	STATUS	ASSESSMENT DATE	ASSESSED BY	EXPIRY DATE
System Lead / Specialist	Colorado	HSE	A&OI ITR Tanks (K)	eLearning	Competent	28-May-14	LE Sync	28-May-16
System Lead / Specialist	Colorado	HSE	A&OI ITR Vessels (K)	eLearning	Competent	28-May-14	LE Sync	28-May-16
System Lead / Specialist	Colorado	HSE	A&OI Quality Management System for Welding (K)	eLearning	Competent	27-May-14	LE Sync	27-May-16
System Lead / Specialist	Colorado	HSE	Benzene Procedure (K)	eLearning	Competent	28-May-14	LE Sync	28-May-15
System Lead / Specialist	Colorado	HSE	Confined Space Entry (nonrescue personnel) (K)	eLearning	Competent	25-Jun-12	LE Sync	25-Jun-15
System Lead / Specialist	Colorado	HSE	Driving/Vehicle Safety (K)	eLearning	Competent	21-May-14		
System Lead / Specialist	Colorado	HSE	Excavation and Trenching (K)	eLearning	Competent	25-Jun-12	LE Sync	25-Jun-17
System Lead / Specialist	Colorado	HSE	Fall Protection (K)	eLearning	Competent	27-Jun-12	LE Sync	27-Jun-15
System Lead / Specialist	Colorado	HSE	Hazard Communication (K)	eLearning	Competent	23-Oct-13		23-Oct-16
System Lead / Specialist	Colorado	HSE	Hazardous Energy Lockout/Tagout and Try (LOTO) (K)	eLearning	Competent	21-Jan-14		21-Jan-15
System Lead / Specialist	Colorado	HSE	Hazwoper First Responder - Operations Level (K)	eLearning	Competent	28-May-14	LE Sync	28-May-15
System Lead / Specialist	Colorado	HSE	Hearing Conservation (K)	eLearning	Competent	28-May-14	LE Sync	28-May-15
System Lead / Specialist	Colorado	HSE	Hot Work (K)	eLearning	Competent	28-Jun-12	LE Sync	28-Jun-15
System Lead / Specialist	Colorado	HSE	HSE Handbook 2013 Edition	eLearning	Competent	5-Mar-14		5-Mar-15
System Lead / Specialist	Colorado	HSE	Hydrogen Sulfide (K)	eLearning	Competent	28-May-14	LE Sync	28-May-15
System Lead / Specialist	Colorado	HSE	Ladder Safety (K)	eLearning	Competent	31-Jul-12		
System Lead / Specialist	Colorado	HSE	Material Management (A)	eLearning	Competent	4-Jun-13	OE Express	
System Lead / Specialist	Colorado	HSE	Personal Protective Equipment (K)	eLearning	Competent	28-May-14	LE Sync	28-May-15
System Lead / Specialist	Colorado	HSE	Respiratory Protection (K)	eLearning	Competent	25-Jul-15	LE Sync	25-Jul-16
System Lead / Specialist	Colorado	HSE	A&OI Management of Change (K)	Instructor Led	Competent	17-Nov-11		
System Lead / Specialist	Colorado	HSE	A&OI Pre-Start up Safety Review (PSSR) (K)	Instructor Led	Competent	17-Nov-11		
System Lead / Specialist	Colorado	HSE	Behavior Based Safety Observers (OTZ) (S)	Instructor Led	Competent	19-Feb-14	LE Sync	
System Lead / Specialist	Colorado	HSE	Commentary Driving	Instructor Led	Competent	14-Dec-11	Teresa Miskin	14-Dec-14
System Lead / Specialist	Colorado	HSE	Emergency Response Plans (K)	Instructor Led	Competent	16-Jun-14	LE Sync	16-Jun-15
System Lead / Specialist	Colorado	HSE	Excavation Competent Person (S)	Instructor Led	Competent	13-Nov-13		13-Nov-16
System Lead / Specialist	Colorado	HSE	Hazardous Energy Lockout/Tagout Authorized Person (S)	Instructor Led	Competent	21-Jan-14		
System Lead / Specialist	Colorado	HSE	Hot Work Authorized Permit Writer (S)	Instructor Led	Competent	28-May-09		
System Lead / Specialist	Colorado	HSE	Safety Leadership Seminar - Supervisor	Instructor Led	Competent	27-Feb-14	LE Sync	27-Feb-17
System Lead / Specialist	Colorado	HSE	Spill Prevention Control and Countermeasures (SPCC) (K)	Instructor Led	Competent	28-Oct-08	LE Sync	
System Lead / Specialist	Colorado	HSE	Unexploded Ordnance (UXO) Level 2 (K)	Instructor Led	Competent	15-Jan-14	LE Sync	

Elective Competencies

	FACILITY	COLLECTION	COMPETENCY	FAMILY	ASSESSMENT DATE	ASSESSED BY
		HSE	A&OI ITR ESD & Safety (K)	eLearning	25-Sep-13	LE Sync
		HSE	Hazwoper First Responder - Awareness Level (K)	eLearning	10-Sep-11	LE Sync

		HSE	Incident Reporting and Investigation (K)	eLearning	28-Jun-12	LE Sync
		HSE	Management of Change for Personnel (PMOC)	eLearning	10-Dec-11	LE Sync
		HSE	Mechanical Lifting and Rigging (K)	eLearning	1-Sep-09	
		HSE	Scaffolding (K)	eLearning	10-Dec-11	LE Sync
		HSE	SPCC Annual Briefing	eLearning	6-Jun-13	
		HSE	Williston Air Compliance	eLearning	4-Jun-13	LE Sync
		HSE	ICS Table Top Drill	Instructor Led	16-Jun-14	LE Sync
		HSE	Confined Space Entry - Supervisor (nonrescue personnel) (S)	Instructor Led	28-May-09	
		HSE	Emergency Preparedness & Crisis Management (K)	Instructor Led	16-Jun-14	LE Sync
		HSE	First Aid / CPR / AED (S)	Instructor Led	28-Jan-14	
		HSE	IC/QI Incident Commander/Qualified Individual (initial) 16 Hr. (K)	Instructor Led	17-Jul-13	
		HSE	ICS 100/200	Instructor Led	16-Jun-14	LE Sync
		HSE	Naturally Occurring Radioactive Materials (NORM) (K)	Instructor Led	10-Dec-11	LE Sync
		HSE	Safety Leadership Seminar - Field	Instructor Led	27-Feb-14	LE Sync
		HSE	Waste Management (includes RCRA) (K)	Instructor Led	4-Sep-13	LE Sync
		Miscellaneous Training	Fire Protection (Portable Fire Extinguishers) (K)	eLearning	18-Jun-13	LE Sync
		Miscellaneous Training	Hazard Communication Standard Globally Harmonized System (K)	eLearning	23-Oct-13	LE Sync
		Miscellaneous Training	Electrical Safety Compliance Procedure (K)	Instructor Led	1-Sep-09	
		Miscellaneous Training	Rockies Safety Orientation	Instructor Led	8-Jan-13	LE Sync
		Basic Operations Technical Skills - Instructor Led	XsPOC		31-Mar-10	

Past Roles

JOB ROLE NAME	FACILITY	COLLECTION	COMPETENCY	FAMILY	STATUS	ASSESSMENT DATE	ASSESSED BY	EXPIRY DATE
System Lead / Specialist	Bakken - Bakken Maintenance	HSE	A&OI ITR Tanks (K)	eLearning	Competent	28-May-14	LE Sync	28-May-16
System Lead / Specialist	Bakken - Bakken Maintenance	HSE	A&OI ITR Vessels (K)	eLearning	Competent	28-May-14	LE Sync	28-May-16
System Lead / Specialist	Bakken - Bakken Maintenance	HSE	A&OI Quality Management System for Welding (K)	eLearning	Competent	27-May-14	LE Sync	27-May-16
System Lead / Specialist	Bakken - Bakken Maintenance	HSE	Benzene Procedure (K)	eLearning	Competent	28-May-14	LE Sync	28-May-15
System Lead / Specialist	Bakken - Bakken Maintenance	HSE	Confined Space Entry (nonrescue personnel) (K)	eLearning	Competent	25-Jun-12	LE Sync	25-Jun-15
System Lead / Specialist	Bakken - Bakken Maintenance	HSE	Driving/Vehicle Safety (K)	eLearning	Competent	21-May-14		
System Lead / Specialist	Bakken - Bakken Maintenance	HSE	Excavation and Trenching (K)	eLearning	Competent	25-Jun-12	LE Sync	25-Jun-17
System Lead / Specialist	Bakken - Bakken Maintenance	HSE	Fall Protection (K)	eLearning	Competent	27-Jun-12	LE Sync	27-Jun-15
System Lead / Specialist	Bakken - Bakken Maintenance	HSE	Hazard Communication (K)	eLearning	Competent	23-Oct-13		23-Oct-16
System Lead / Specialist	Bakken - Bakken Maintenance	HSE	Hazardous Energy Lockout/Tagout and Try (LOTO) (K)	eLearning	Competent	21-Jan-14		21-Jan-15
System Lead / Specialist	Bakken - Bakken Maintenance	HSE	Hazwoper First Responder - Operations Level (K)	eLearning	Competent	28-May-14	LE Sync	28-May-15
System Lead / Specialist	Bakken - Bakken Maintenance	HSE	Hearing Conservation (K)	eLearning	Competent	28-May-14	LE Sync	28-May-15
System Lead / Specialist	Bakken - Bakken Maintenance	HSE	Hot Work (K)	eLearning	Competent	28-Jun-12	LE Sync	28-Jun-15
System Lead / Specialist	Bakken - Bakken Maintenance	HSE	HSE Handbook 2013 Edition	eLearning	Competent	5-Mar-14		5-Mar-15
System Lead / Specialist	Bakken - Bakken Maintenance	HSE	Hydrogen Sulfide (K)	eLearning	Competent	28-May-14	LE Sync	28-May-15
System Lead / Specialist	Bakken - Bakken Maintenance	HSE	Ladder Safety (K)	eLearning	Competent	31-Jul-12		
System Lead / Specialist	Bakken - Bakken Maintenance	HSE	Material Management (A)	eLearning	Competent	4-Jun-13	OE Express	
System Lead / Specialist	Bakken - Bakken Maintenance	HSE	Personal Protective Equipment (K)	eLearning	Competent	28-May-14	LE Sync	28-May-15
System Lead / Specialist	Bakken - Bakken Maintenance	HSE	Respiratory Protection (K)	eLearning	Competent	25-Jul-15	LE Sync	25-Jul-16
System Lead / Specialist	Bakken - Bakken Maintenance	HSE	Williston Air Compliance	eLearning	Expired	4-Jun-13	LE Sync	4-Jun-14

System Lead / Specialist	Bakken - Bakken Maintenance	HSE	A&OI Management of Change (K)	Instructor Led	Competent	17-Nov-11		
System Lead / Specialist	Bakken - Bakken Maintenance	HSE	A&OI Pre-Start up Safety Review (PSSR) (K)	Instructor Led	Competent	17-Nov-11		
System Lead / Specialist	Bakken - Bakken Maintenance	HSE	Behavior Based Safety Observers (OTZ) (S)	Instructor Led	Competent	19-Feb-14	LE Sync	
System Lead / Specialist	Bakken - Bakken Maintenance	HSE	Commentary Driving	Instructor Led	Competent	14-Dec-11	Teresa Miskin	14-Dec-14
System Lead / Specialist	Bakken - Bakken Maintenance	HSE	Emergency Response Plans (K)	Instructor Led	Competent	16-Jun-14	LE Sync	16-Jun-15
System Lead / Specialist	Bakken - Bakken Maintenance	HSE	First Aid / CPR / AED (S)	Instructor Led	Competent	28-Jan-14		28-Jan-16
System Lead / Specialist	Bakken - Bakken Maintenance	HSE	Hazardous Energy Lockout/Tagout Authorized Person (S)	Instructor Led	Competent	21-Jan-14		
System Lead / Specialist	Bakken - Bakken Maintenance	HSE	Hot Work Authorized Permit Writer (S)	Instructor Led	Competent	28-May-09		
System Lead / Specialist	Bakken - Bakken Maintenance	HSE	Safety Leadership Seminar - Supervisor	Instructor Led	Competent	27-Feb-14	LE Sync	27-Feb-17
System Lead / Specialist	Bakken - Bakken Maintenance	HSE	Spill Prevention Control and Countermeasures (SPCC) (K)	Instructor Led	Competent	28-Oct-08	LE Sync	