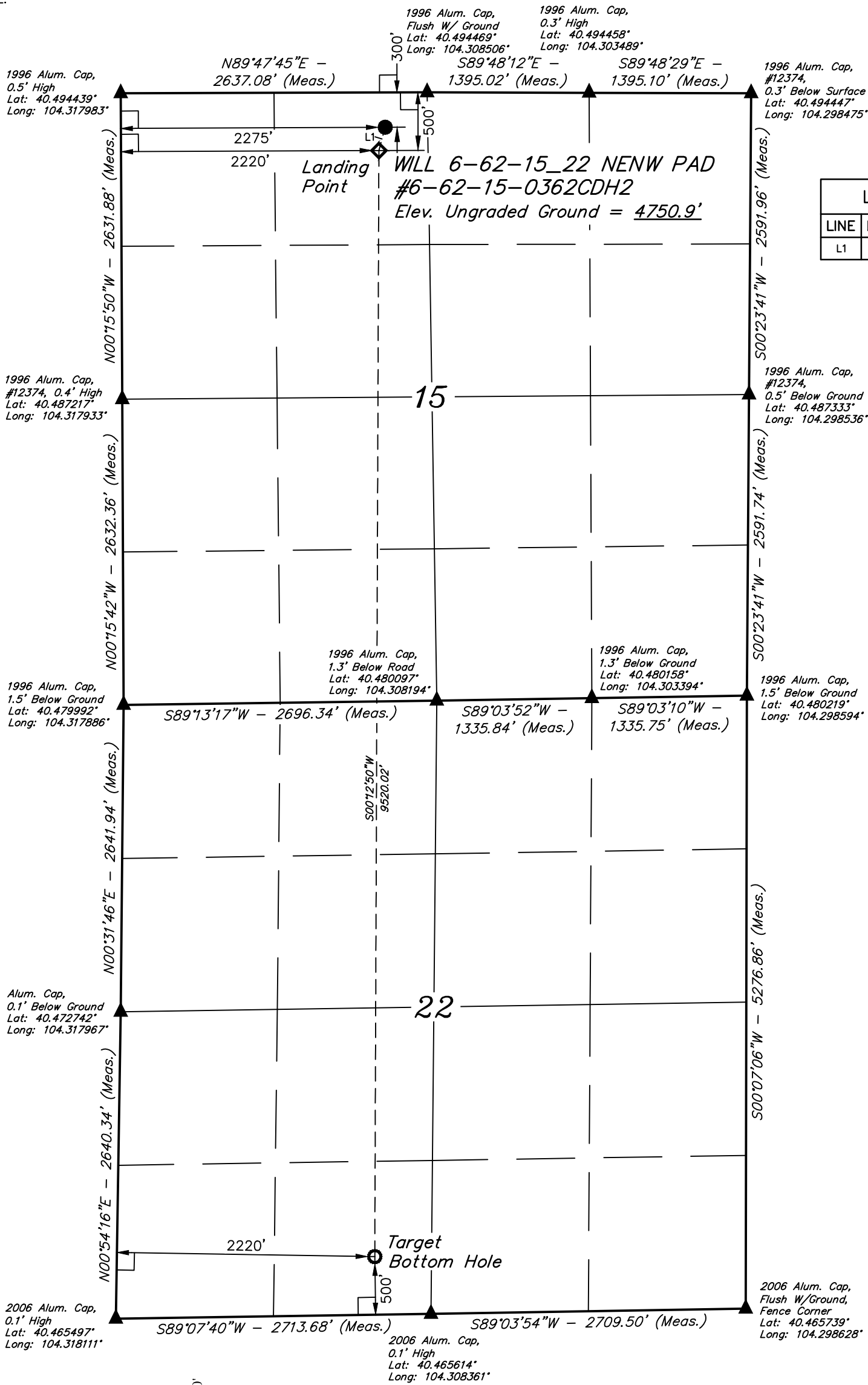


LEGEND:

- └─ = 90° SYMBOL
● = PROPOSED WELLHEAD.
◆ = LANDING POINT.
○ = TARGET BOTTOM HOLE.
▲ = SECTION CORNERS LOCATED.

T6N, R62W, 6th P.M.



LINE TABLE		
LINE	DIRECTION	LENGTH
L1	S15°07'07\"W	207.34'



PDOP = 2.3

NAD 83 (TARGET BOTTOM HOLE)	NAD 83 (LANDING POINT)	NAD 83 (SURFACE LOCATION)
LATITUDE = 40°28'01.08" (40.466967)	LATITUDE = 40°29'35.13" (40.493092)	LATITUDE = 40°29'37.11" (40.493642)
LONGITUDE = 104°18'36.37" (104.310103)	LONGITUDE = 104°18'35.98" (104.309994)	LONGITUDE = 104°18'35.28" (104.309800)
NAD 27 (TARGET BOTTOM HOLE)	NAD 27 (LANDING POINT)	NAD 27 (SURFACE LOCATION)
LATITUDE = 40°28'01.14" (40.466983)	LATITUDE = 40°29'35.19" (40.493108)	LATITUDE = 40°29'37.17" (40.493658)
LONGITUDE = 104°18'34.55" (104.309597)	LONGITUDE = 104°18'34.16" (104.309489)	LONGITUDE = 104°18'33.46" (104.309294)
STATE PLANE NAD 83	STATE PLANE NAD 83	STATE PLANE NAD 83
N: 1415177.36 E: 3331061.25	N: 1424694.46 E: 3330963.84	N: 1424895.30 E: 3331015.11
STATE PLANE NAD 27	STATE PLANE NAD 27	STATE PLANE NAD 27
N: 415178.32 E: 2331210.95	N: 424695.17 E: 2331113.45	N: 424896.01 E: 2331164.72

CERTIFICATE

THIS IS TO CERTIFY THAT THE ABOVE PLAT WAS PREPARED FROM FIELD NOTES OF ACTUAL SURVEYS MADE BY ME OR UNDER MY SUPERVISION, AND THAT THE SAME ARE TRUE AND CORRECT TO THE BEST OF MY KNOWLEDGE AND BELIEF.

REGISTERED LAND SURVEYOR
REGISTRATION NO. 28285
STATE OF COLORADO

BASIS OF BEARINGS

BASIS OF BEARINGS IS A G.P.S. OBSERVATION

BASIS OF ELEVATION

SPOT ELEVATION LOCATED AT THE NORTHEAST CORNER OF SECTION 24, T5N, R62W, 6th P.M. TAKEN FROM THE POINT OF ROCKS, QUADRANGLE, COLORADO, WELD COUNTY, 7.5 MINUTE QUAD (TOPOGRAPHIC MAP) PUBLISHED BY THE UNITED STATES DEPARTMENT OF THE INTERIOR, GEOLOGICAL SURVEY. SAID ELEVATION IS MARKED AS BEING 4530 FEET.

BILL BARRETT CORPORATION

WILL 6-62-15_22 NENW PAD #6-62-15-0362CDH2
NE 1/4 NW 1/4, SECTION 15, T6N, R62W, 6th P.M.
WELD COUNTY, COLORADO

SURVEYED BY: GREG WEIMER, C.T.	DATE: 04-25-14
DRAWN BY: J.S.	DATE DRAWN: 05-05-14
SCALE: 1" = 1000'	REVISION: 06-18-14

WELL LOCATION PLAT



UELS, LLC
Corporate Office * 85 South 200 East
Vernal, UT 84078 * (435) 789-1017

