

LEGEND:

 PROPOSED LOCATION

BILL BARRETT CORPORATION

WILL 6-62-15_22 NENW PAD #6-62-15-0362CH2, 0362CDH2, 0461BH2, 0461CH2, 0560CH2, 0560BH2 & 0560CDH2
SECTION 15, T6N, R62W, 6th P.M.
NE 1/4 NW 1/4



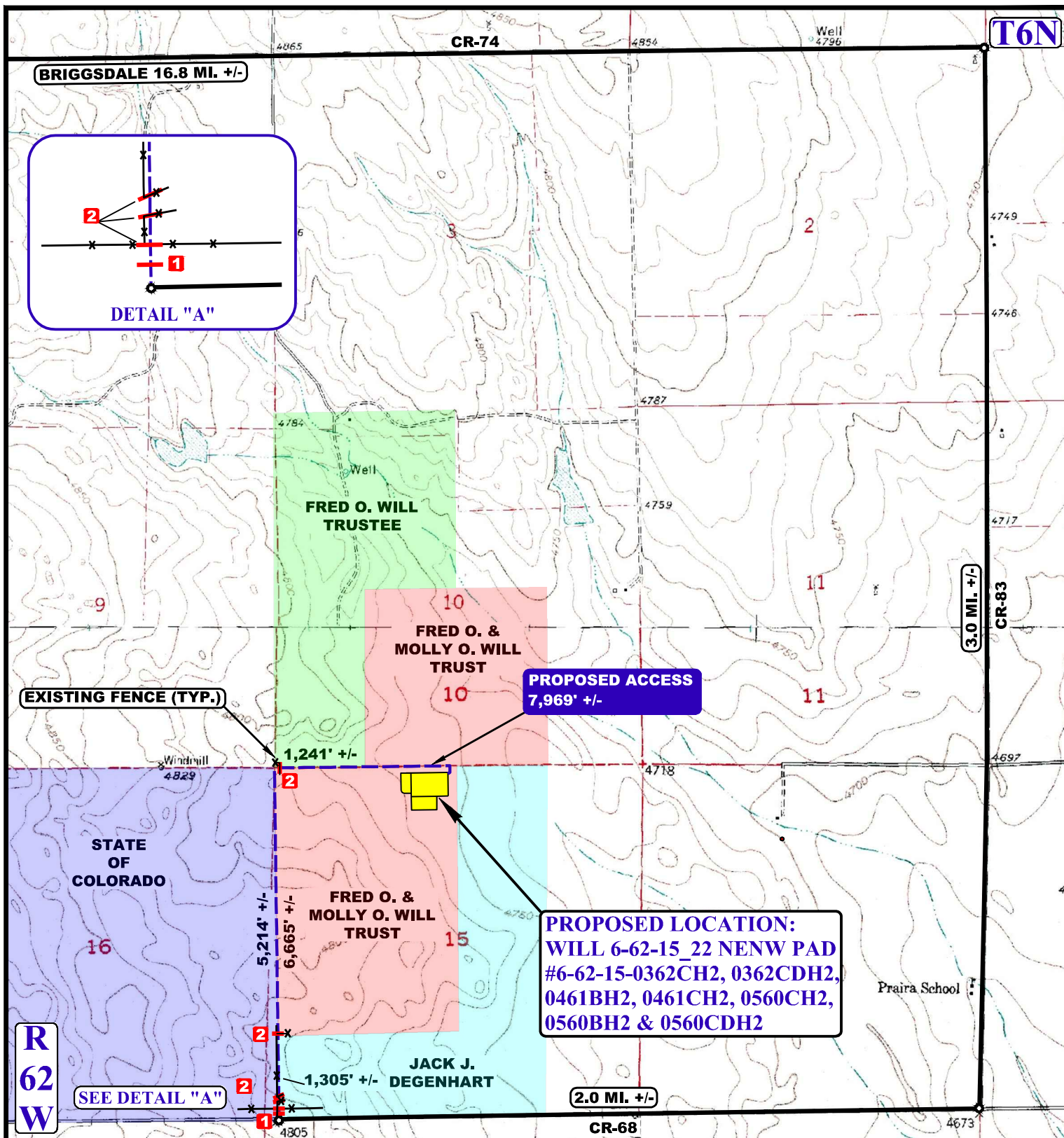
UELS, LLC
Corporate Office * 85 South 200 East
Vernal, UT 84078 * (435) 789-1017



DRAWN BY: J.L.G.	DATE DRAWN: 05-20-14
SCALE: 1:100,000	REVISED: 07-01-14 T.W.

ACCESS ROAD MAP

TOPO A



NOTE: PARCEL DATA SHOWN HAS BEEN OBTAINED FROM VARIOUS SOURCES AND SHOULD BE USED FOR MAPPING, GRAPHIC AND PLANNING PURPOSES ONLY. NO WARRANTY IS MADE BY UTAH ENGINEERING AND LAND SURVEYING (UELS) FOR ACCURACY OF THE PARCEL DATA.

LEGEND:

- EXISTING ROAD
- - - PROPOSED ROAD
- 1 18" CMP REQUIRED
- 2 CATTLE GUARD REQUIRED

BILL BARRETT CORPORATION

WILL 6-62-15_22 NENW PAD #6-62-15-0362CH2, 0362CDH2, 0461BH2, 0461CH2, 0560CH2, 0560BH2 & 0560CDH2
SECTION 15, T6N, R62W, 6th P.M.
NE 1/4 NW 1/4

DRAWN BY: J.L.G.

DATE DRAWN: 05-20-14

SCALE: 1" = 2000'

REVISED: 07-01-14 T.W.

ACCESS ROAD MAP

TOPO B



UELS, LLC

Corporate Office * 85 South 200 East
Vernal, UT 84078 * (435) 789-1017

PROCEED IN A SOUTHERLY, THEN SOUTHWESTERLY DIRECTION FROM BRIGGSDALE, COLORADO ALONG HIGHWAY 392 APPROXIMATELY 9.7 MILES TO THE JUNCTION OF THIS ROAD AND COUNTY ROAD 74 TO THE EAST; TURN LEFT AND PROCEED IN AN EASTERLY DIRECTION APPROXIMATELY 7.1 MILES TO THE JUNCTION OF THIS ROAD AND COUNTY ROAD 83 TO THE SOUTH; TURN RIGHT AND PROCEED IN A SOUTHERLY DIRECTION APPROXIMATELY 3.0 MILES TO THE JUNCTION OF THIS ROAD AND COUNTY ROAD 68 TO THE WEST; TURN RIGHT AND PROCEED IN A WESTERLY DIRECTION APPROXIMATELY 2.0 MILES TO THE BEGINNING OF THE PROPOSED ACCESS TO THE NORTH; FOLLOW ROAD FLAGS IN A NORTHERLY, THEN EASTERLY, THEN SOUTHERLY DIRECTION APPROXIMATELY 7,969' TO THE PROPOSED LOCATION.

TOTAL DISTANCE FROM BRIGGSDALE, COLORADO TO THE PROPOSED WELL LOCATION IS APPROXIMATELY 23.3 MILES.

BILL BARRETT CORPORATION

WILL 6-62-15 22 NENW PAD #6-62-15-0362CH2, 0362CDH2,
0461BH2, 0461CH2, 0560CH2, 0560BH2 & 0560CDH2
SECTION 15, T6N, R62W, 6th P.M.
NE 1/4 NW 1/4



UELS, LLC
Corporate Office * 85 South 200 East
Vernal, UT 84078 * (435) 789-1017

DRAWN BY: J.L.G.	DATE DRAWN: 05-20-14
	REVISED: 07-01-14 T.W.
ROAD DESCRIPTION	