

REMARKS

LOGGED WITH 0 PSI @ SURFACE

DEPTH SCALE: 5":100'

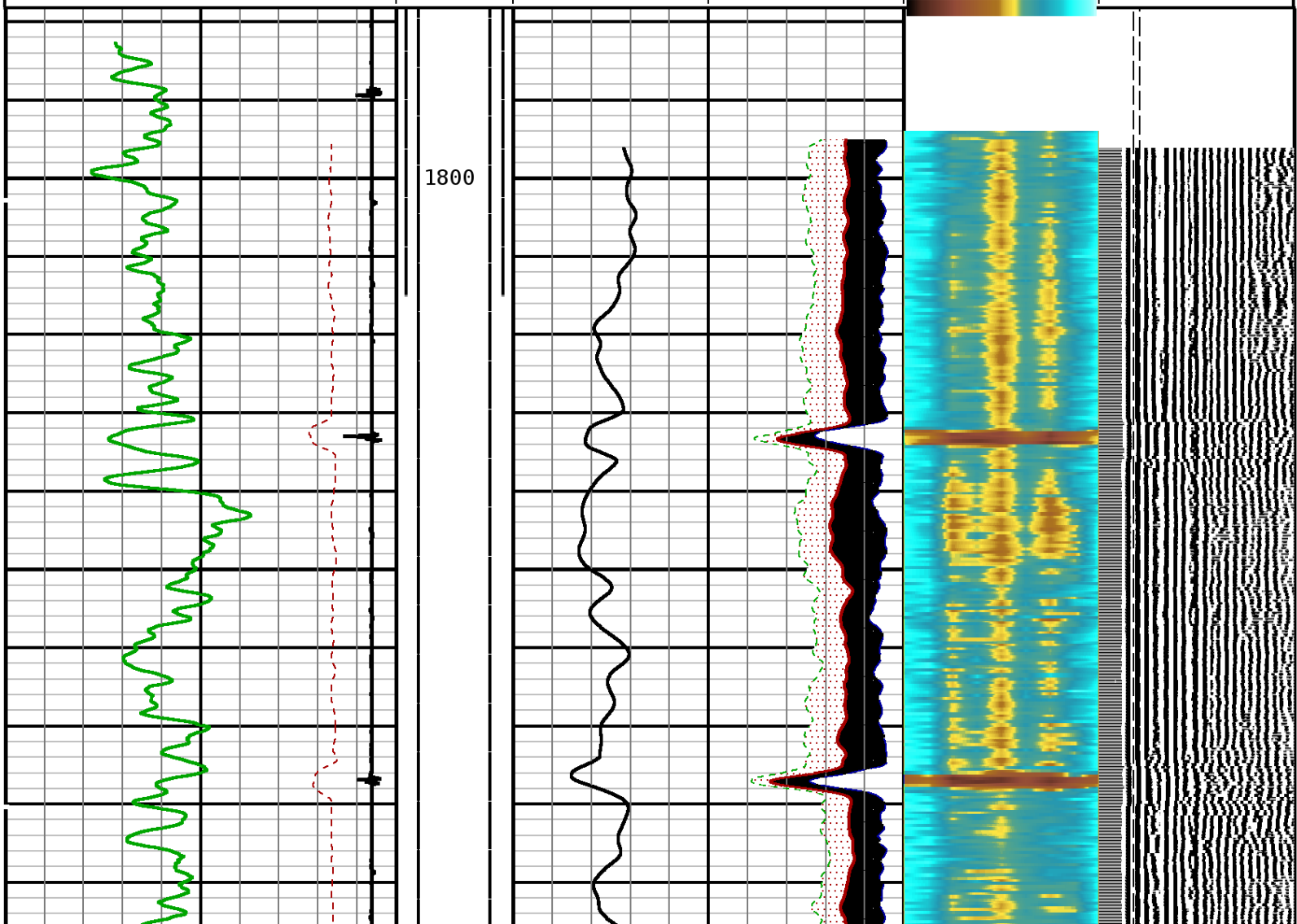
PROCESSED VERSION: 2012.07.18.162"

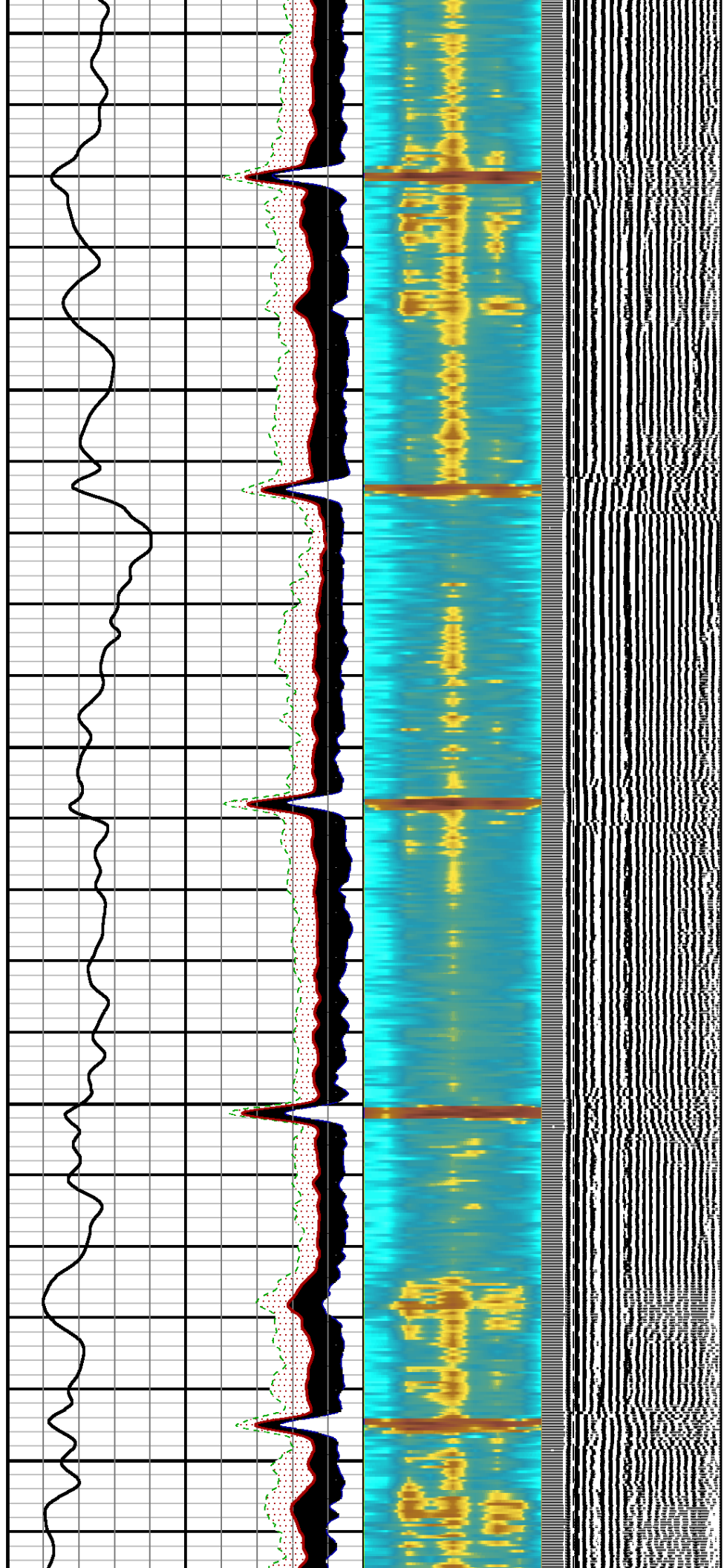
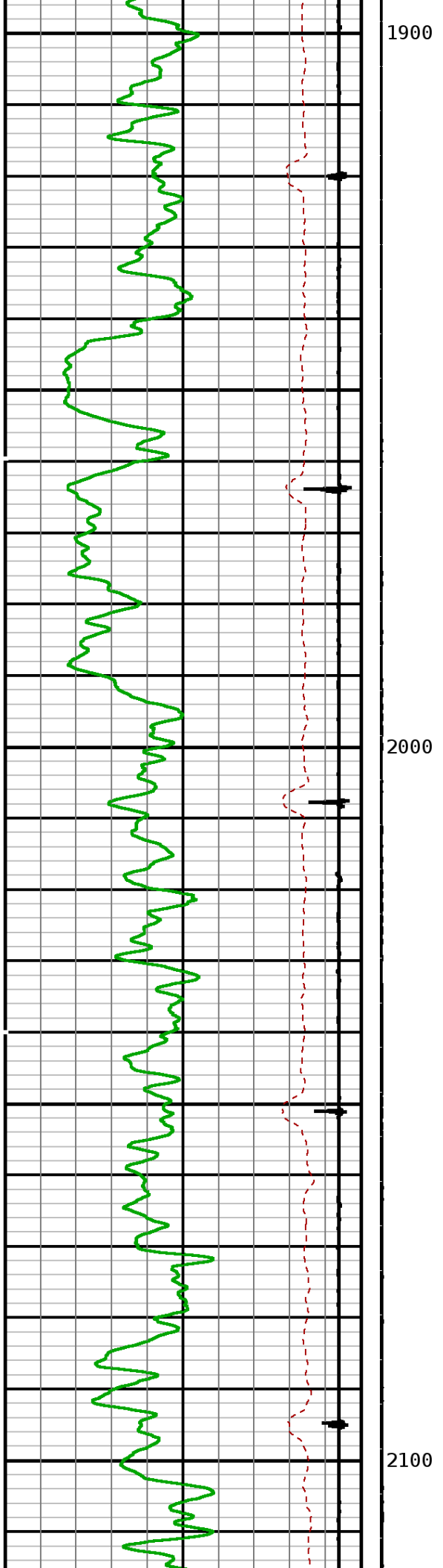
MAIN PASS

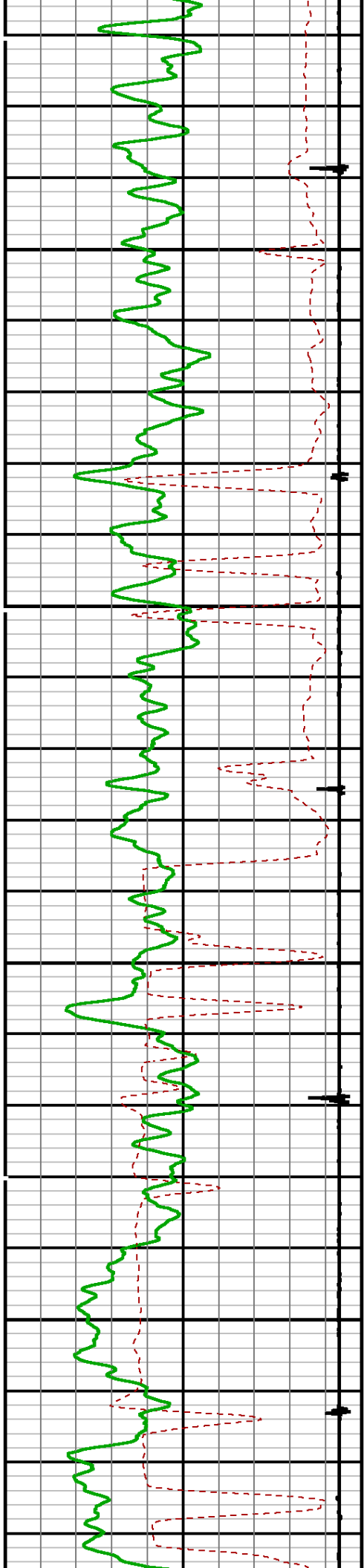
91408227 SBTMF

FINISH DEPTH: 1801.6 Feet DIRECTION: UP DATE: 07/01/2014 TIME: 08:34 MODE: ORIGINAL
RECOMPUTED DATE: 07/01/2014 TIME: 08:34

Collar Locator						MAX ENERGY			FREE PIPE GATE		
-1800	Millivolts	120				0	mv	100	200	us	1200
Gamma Ray			AMPLITUDE 3FT			AVG ENERGY			FREE PIPE GATE		
0	API	200	0	mv	20	0	mv	100	200	us	1200
TRAVEL TIME 3FT			Tension			MIN ENERGY			VARIABLE ENERGY		
302	Microseconds	205	0	3000	0	0	mv	100	0	mv	80
									VARIABLE DENSI		
									200	us	1200

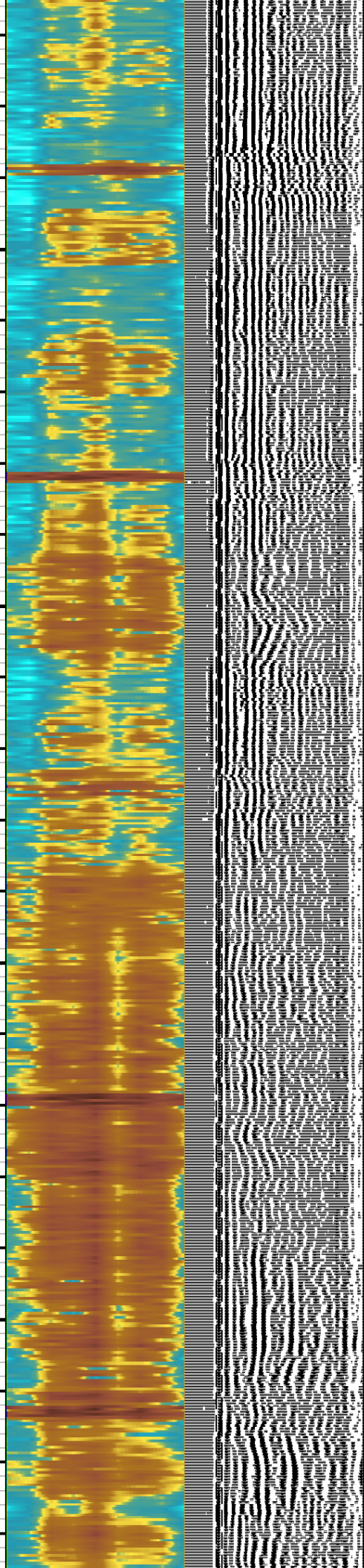
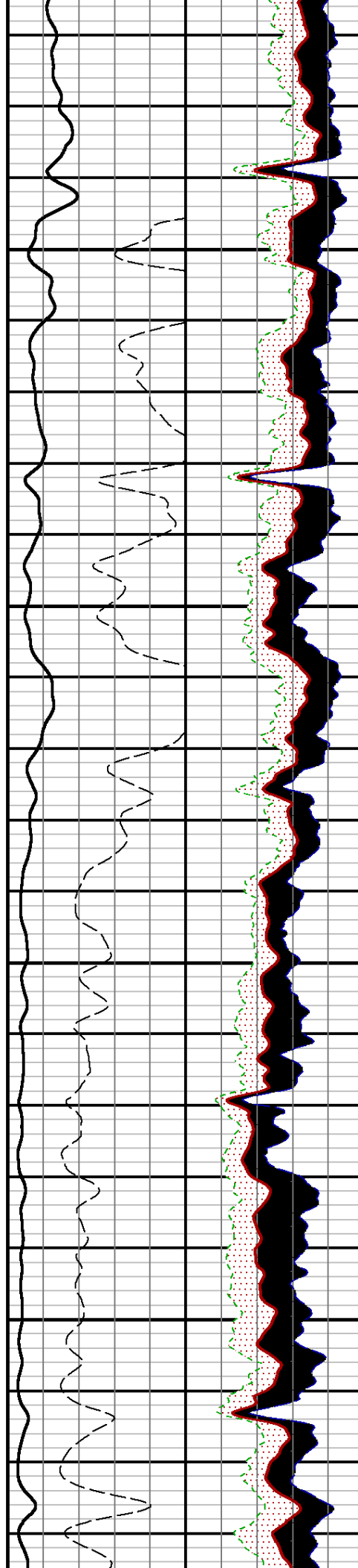


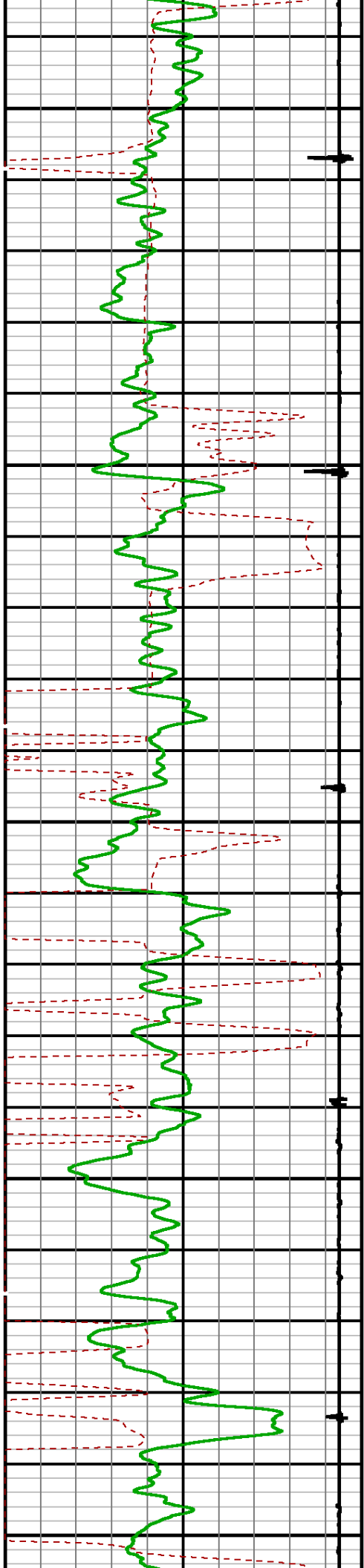




2200

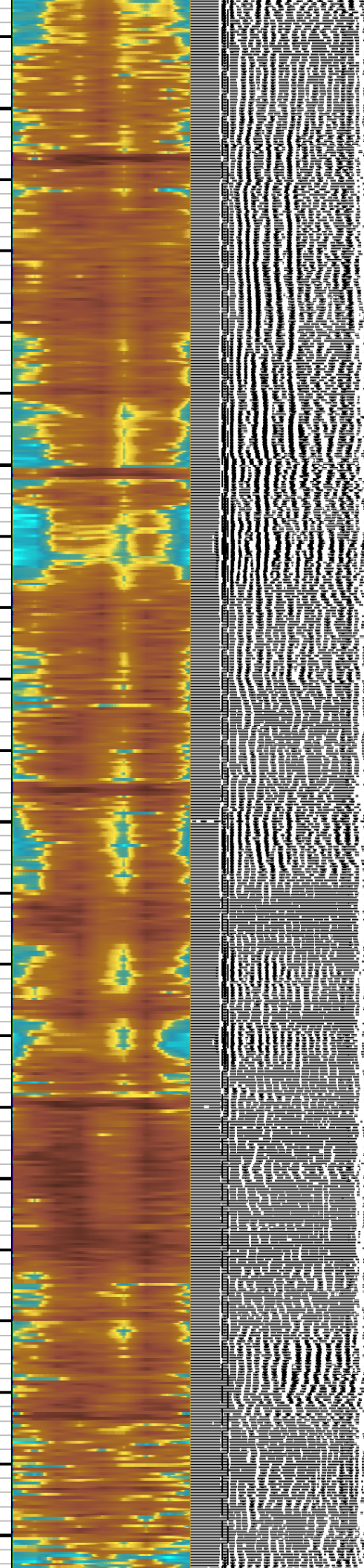
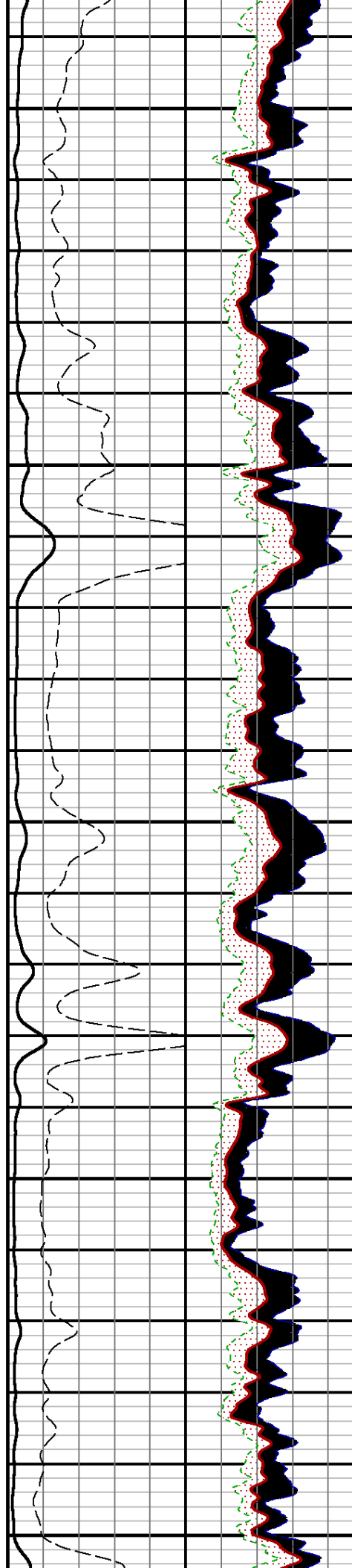
2300

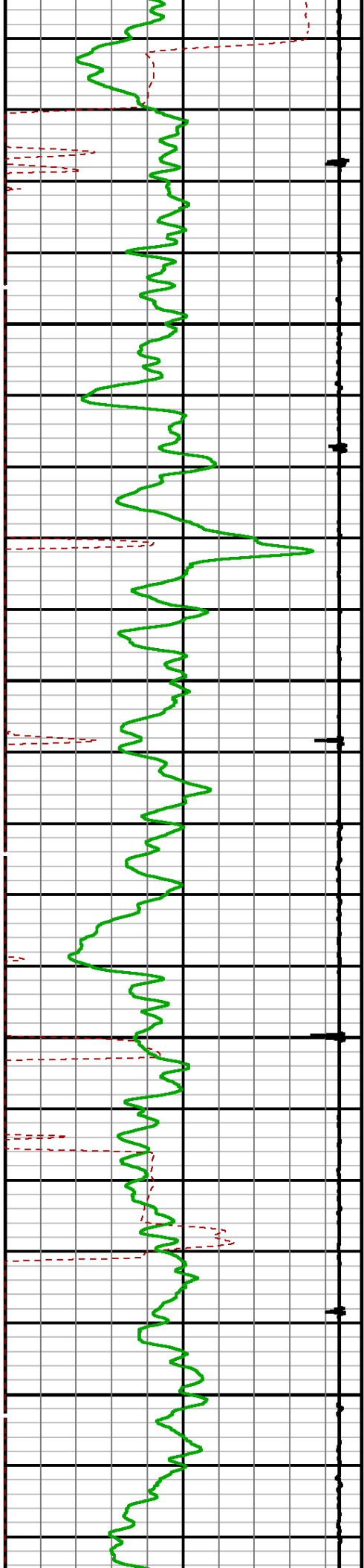




2400

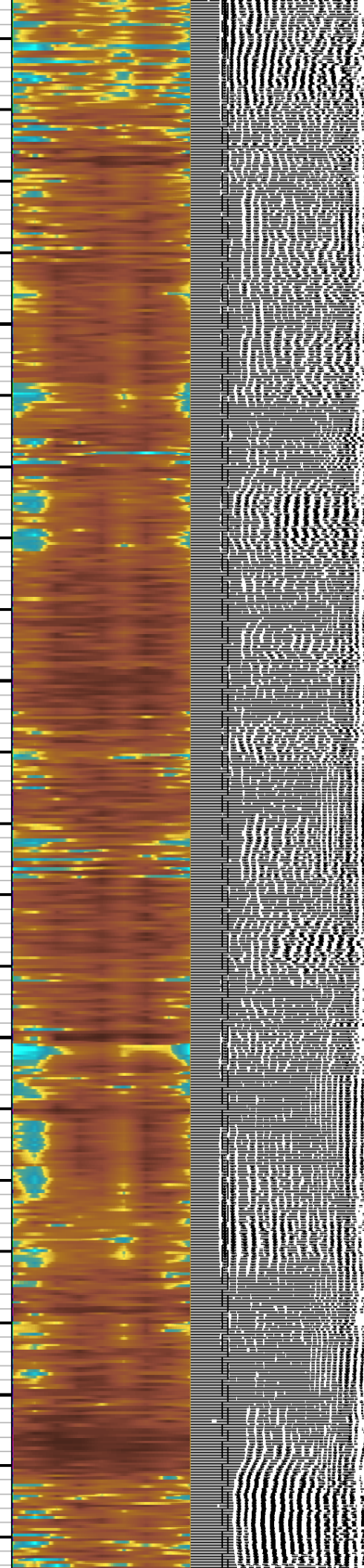
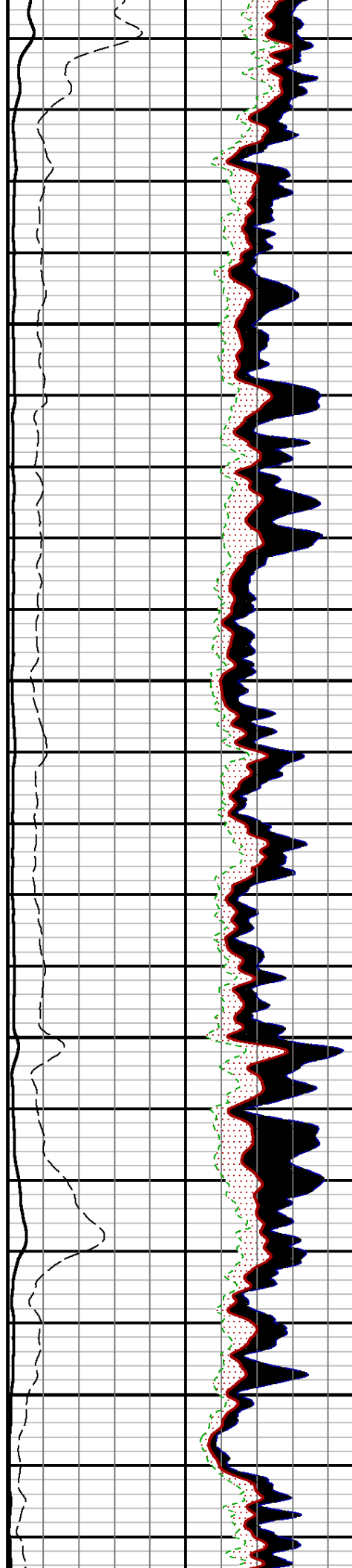
2500

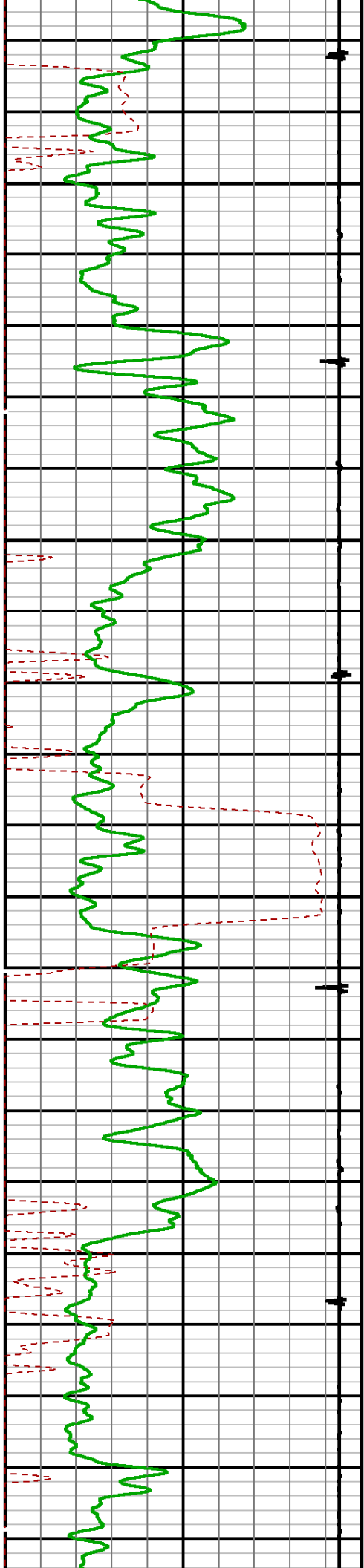




2600

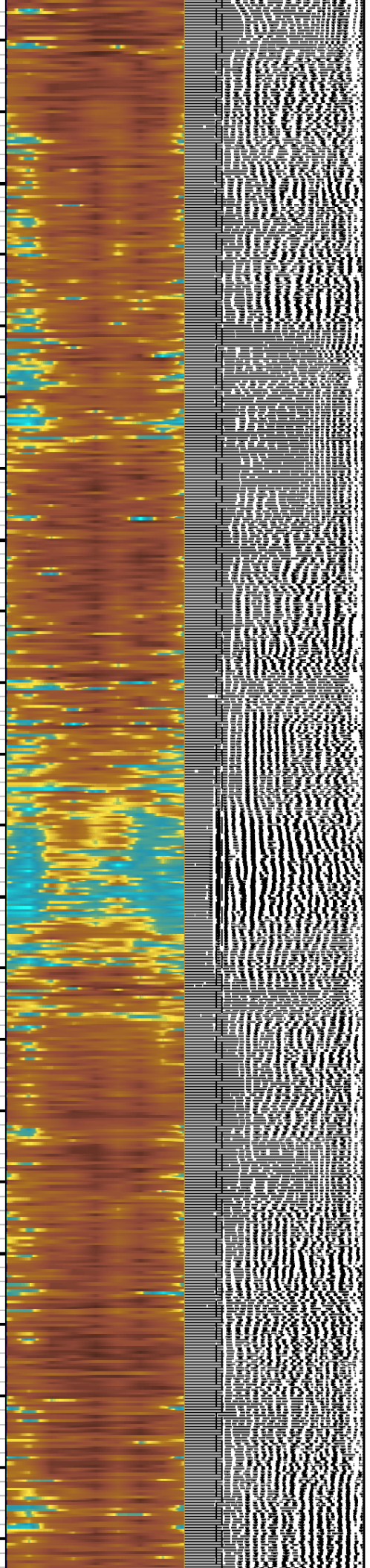
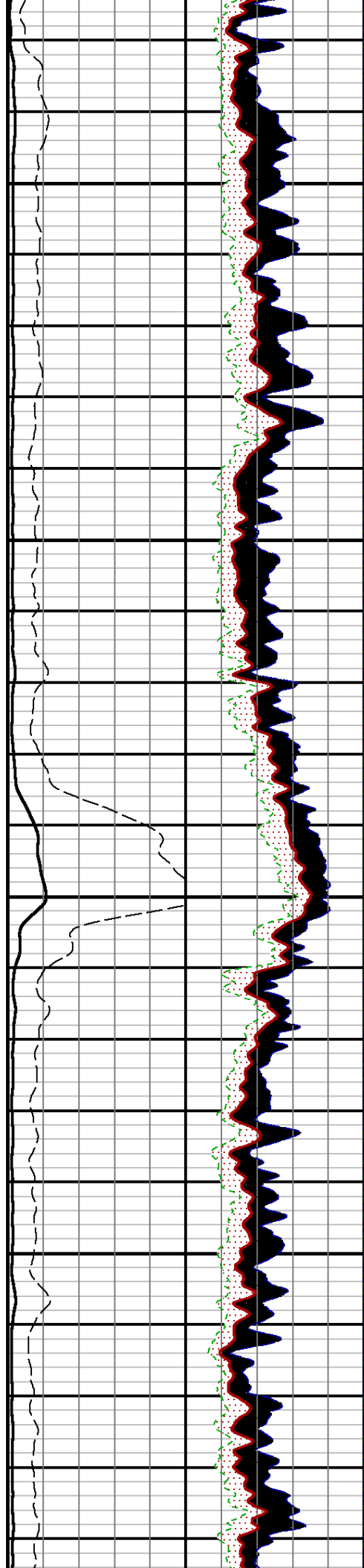
2700

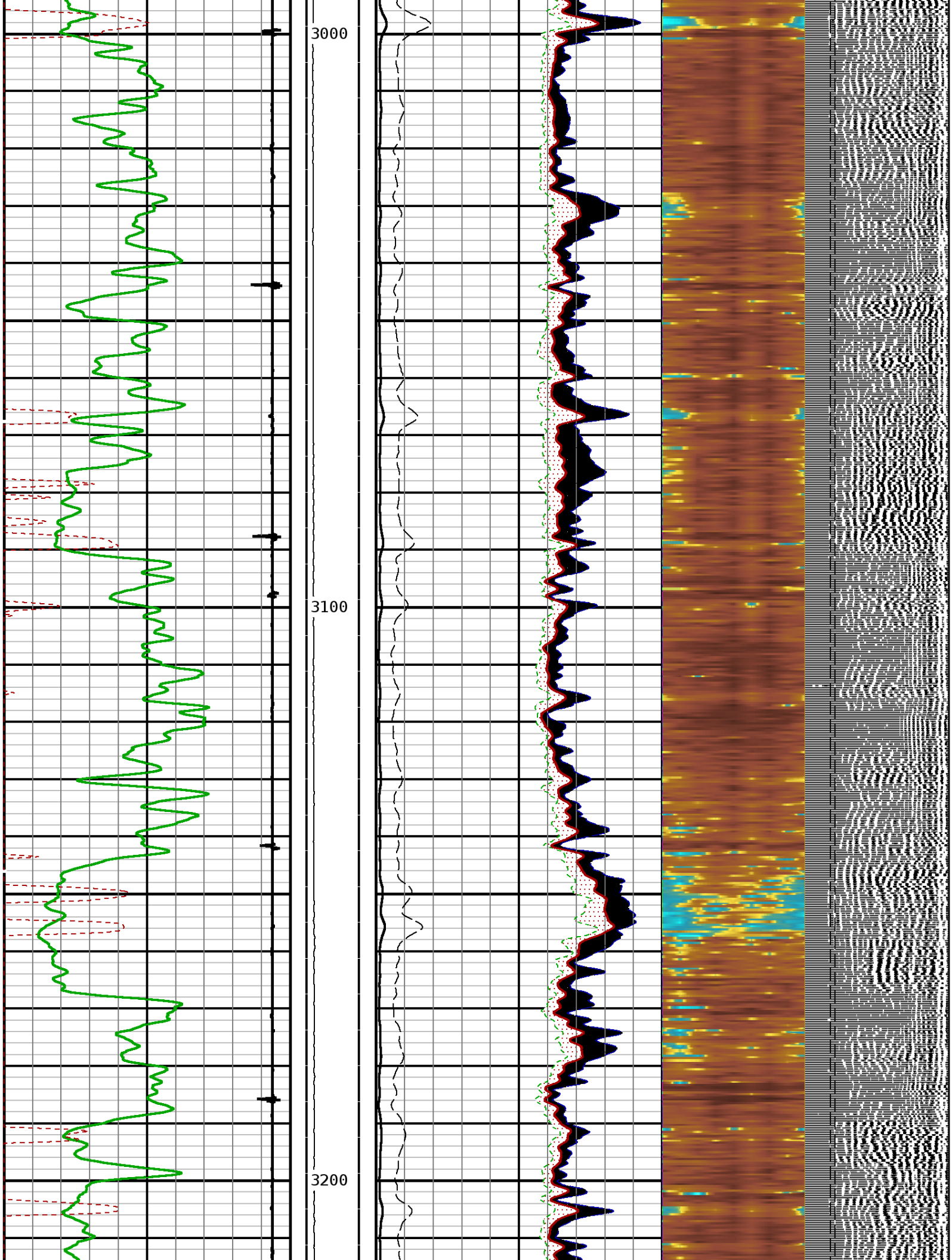


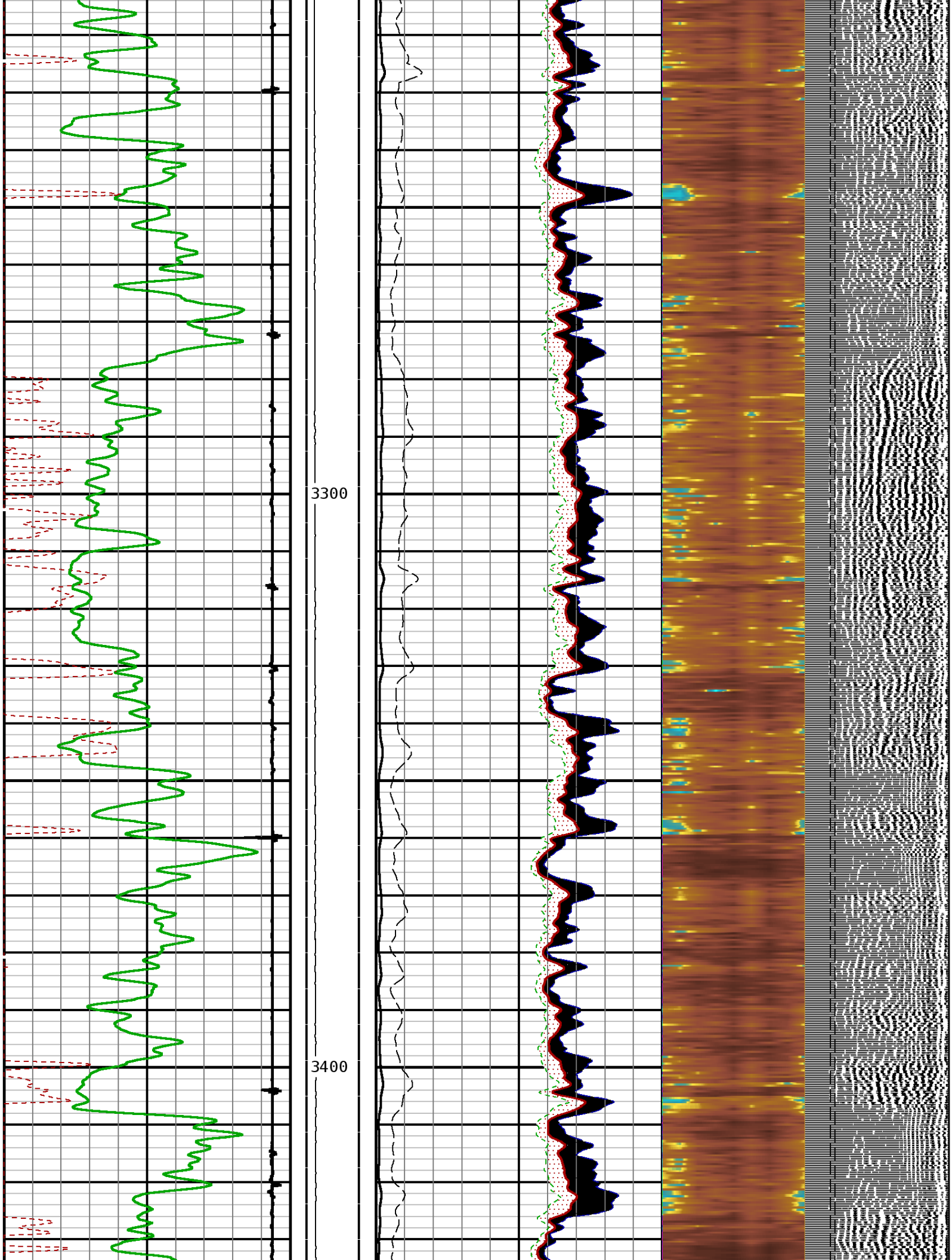


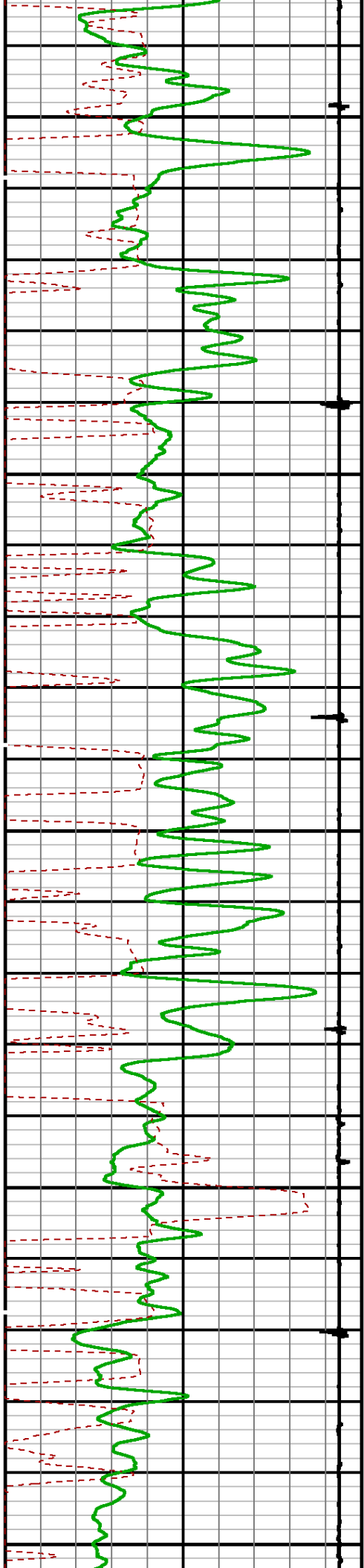
2800

2900



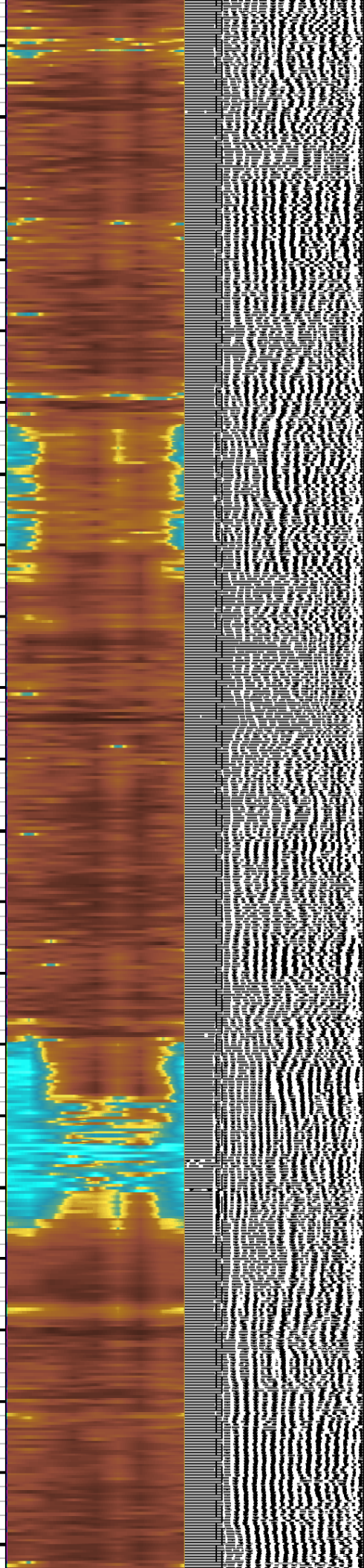
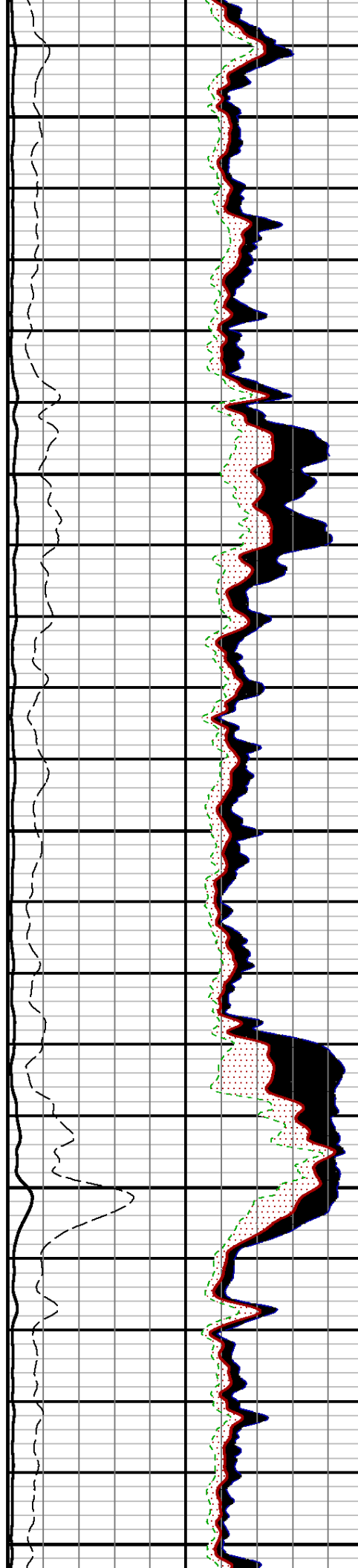


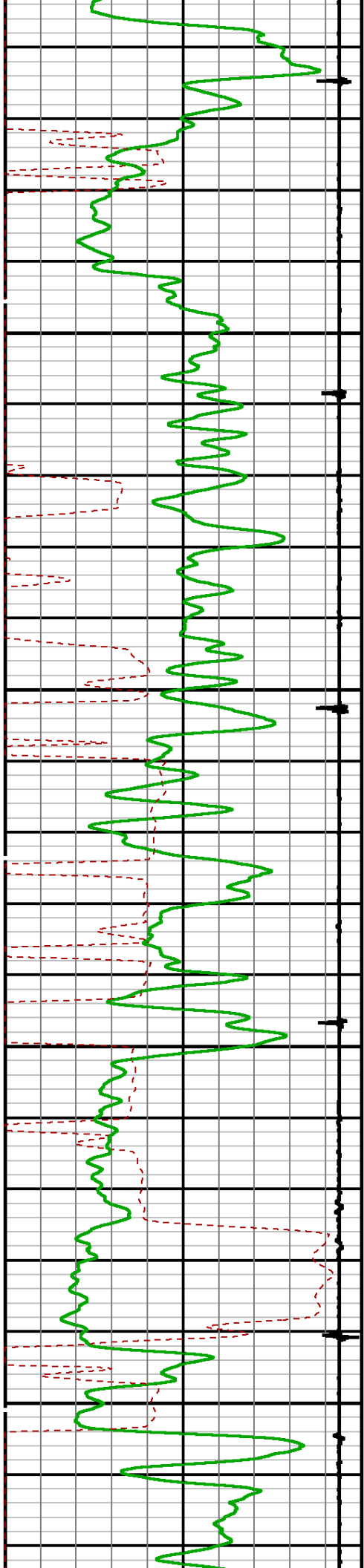




3500

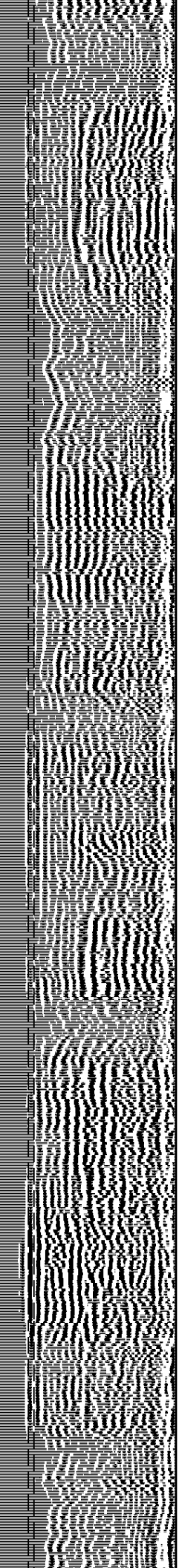
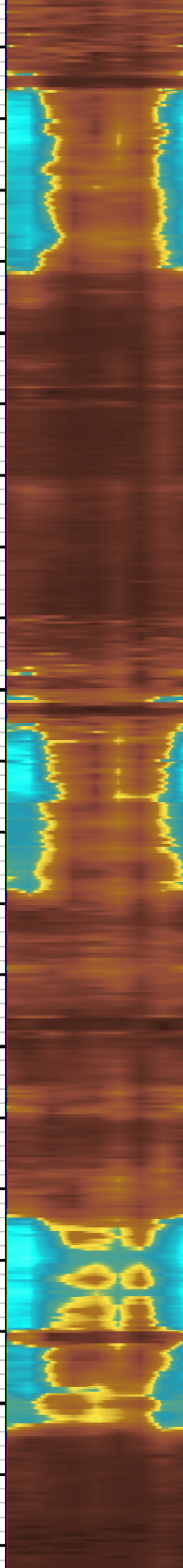
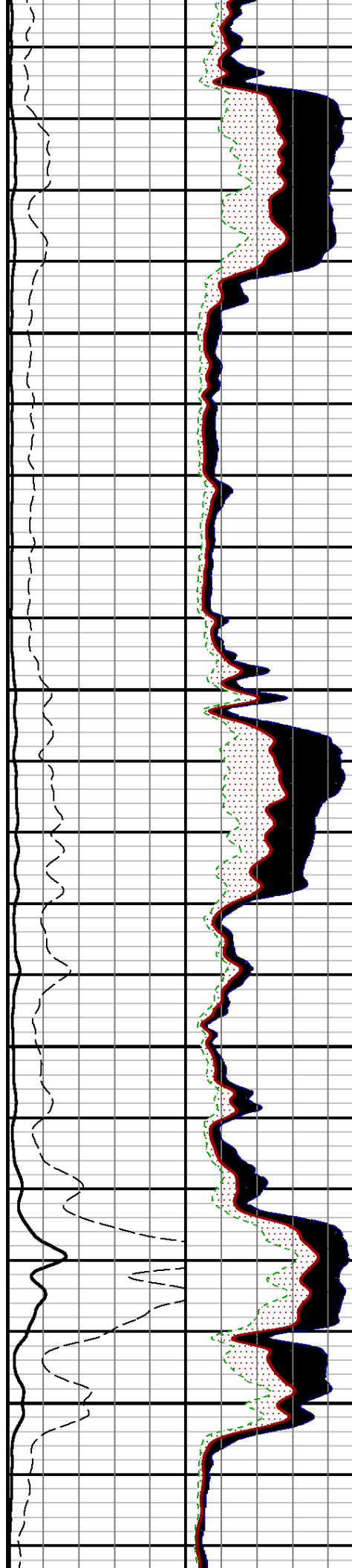
3600

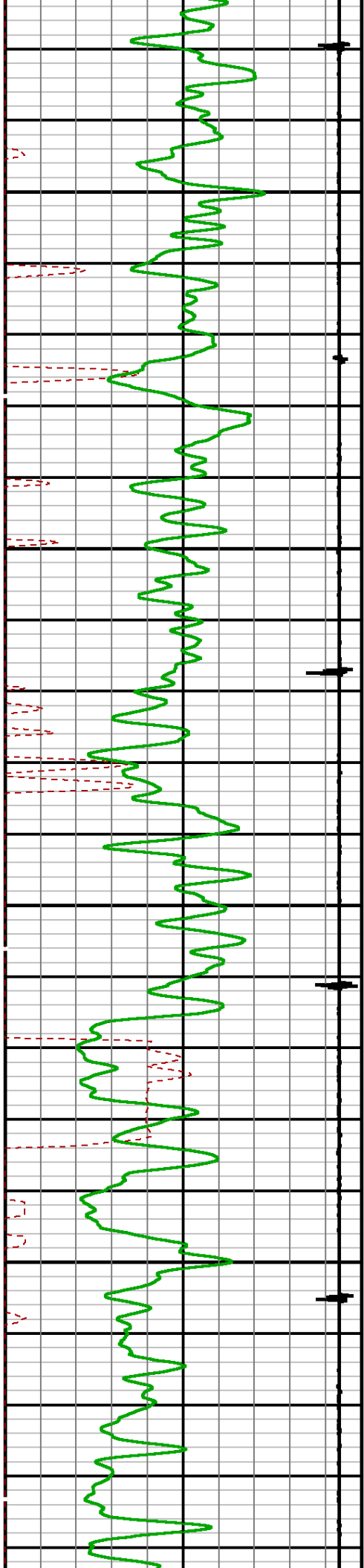




3700

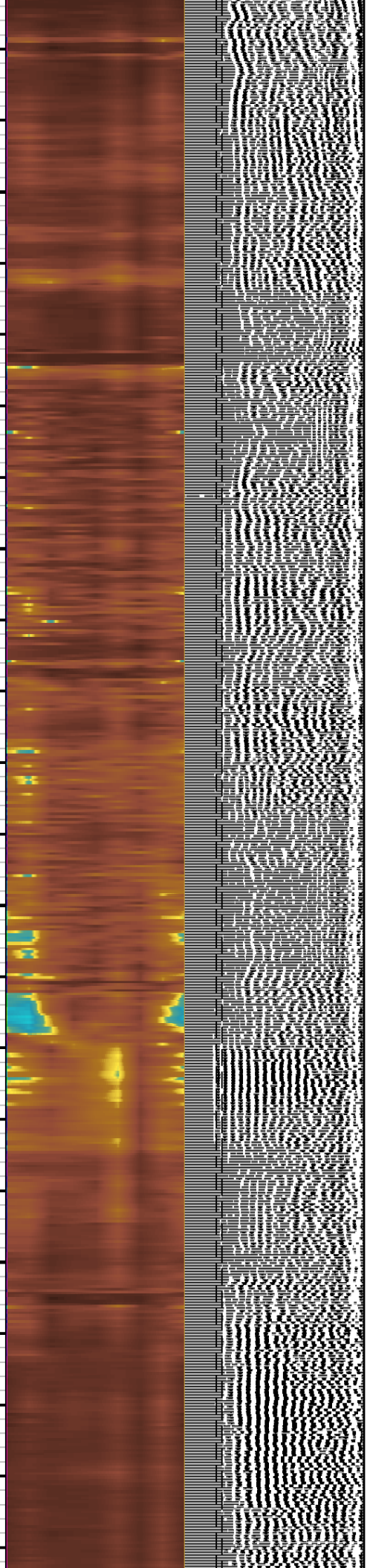
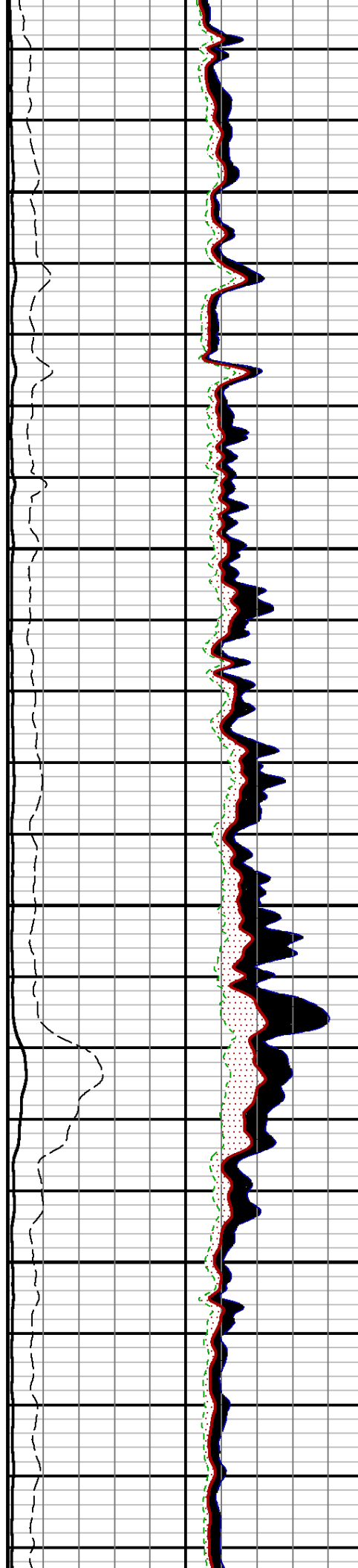
3800

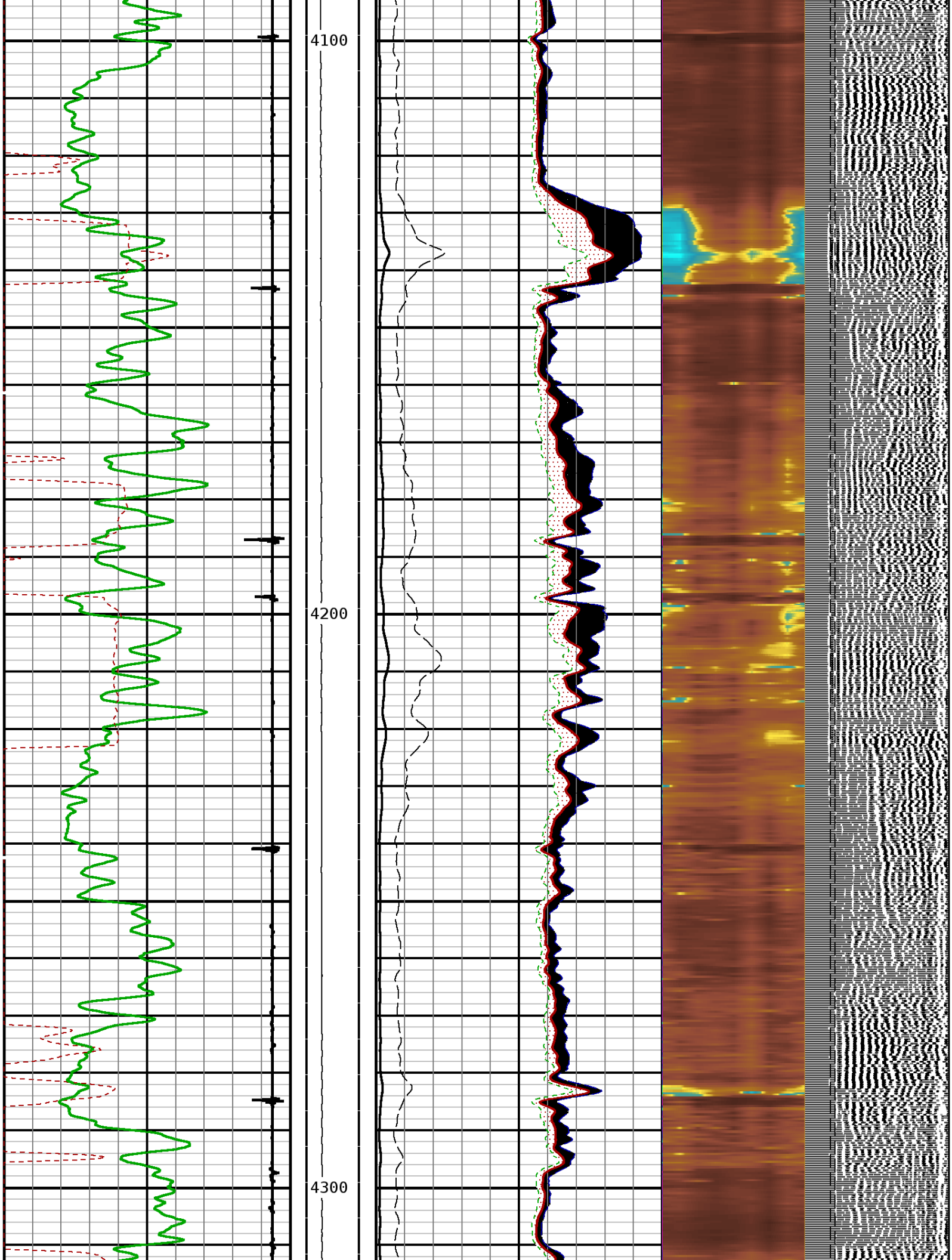


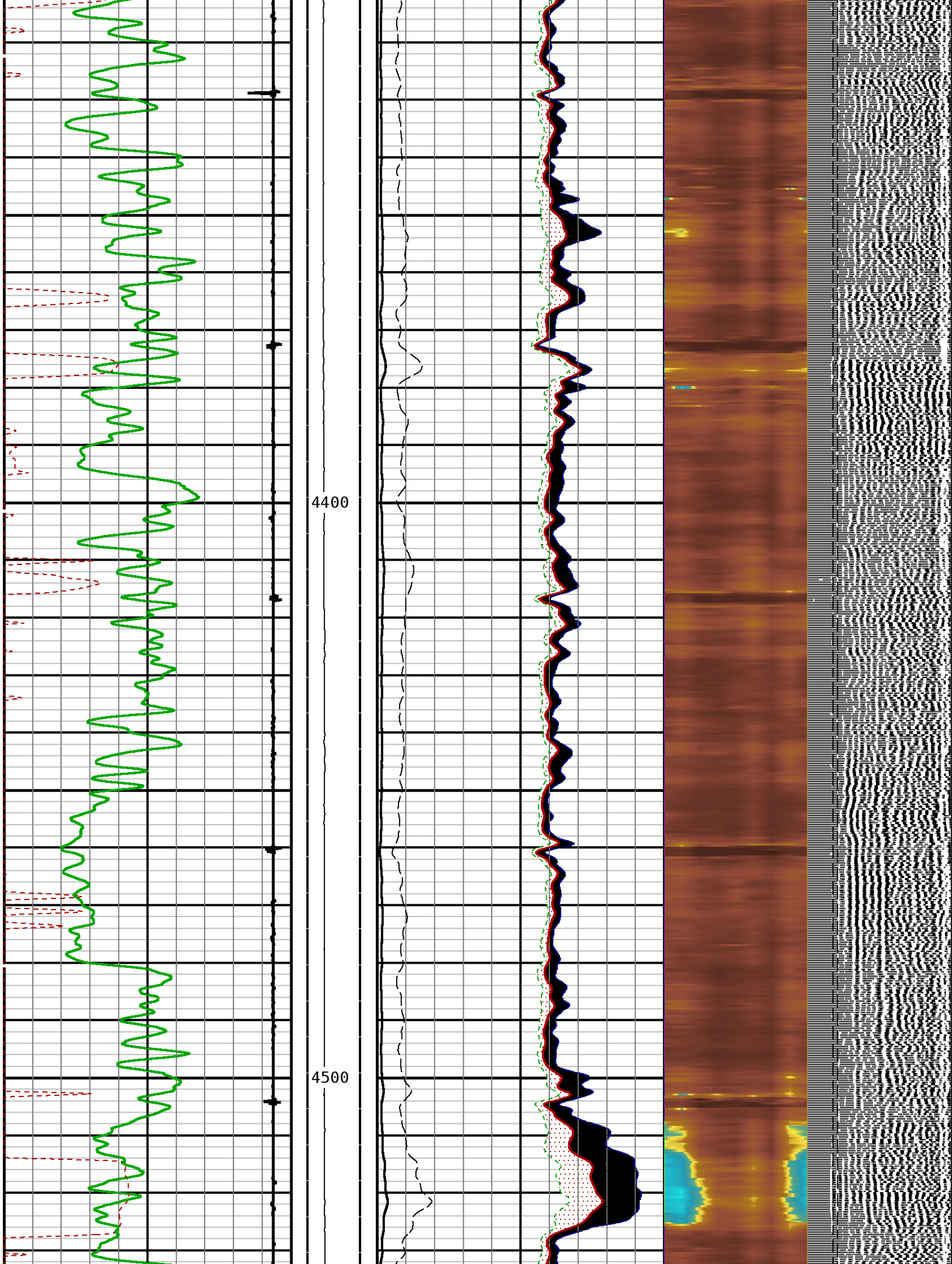


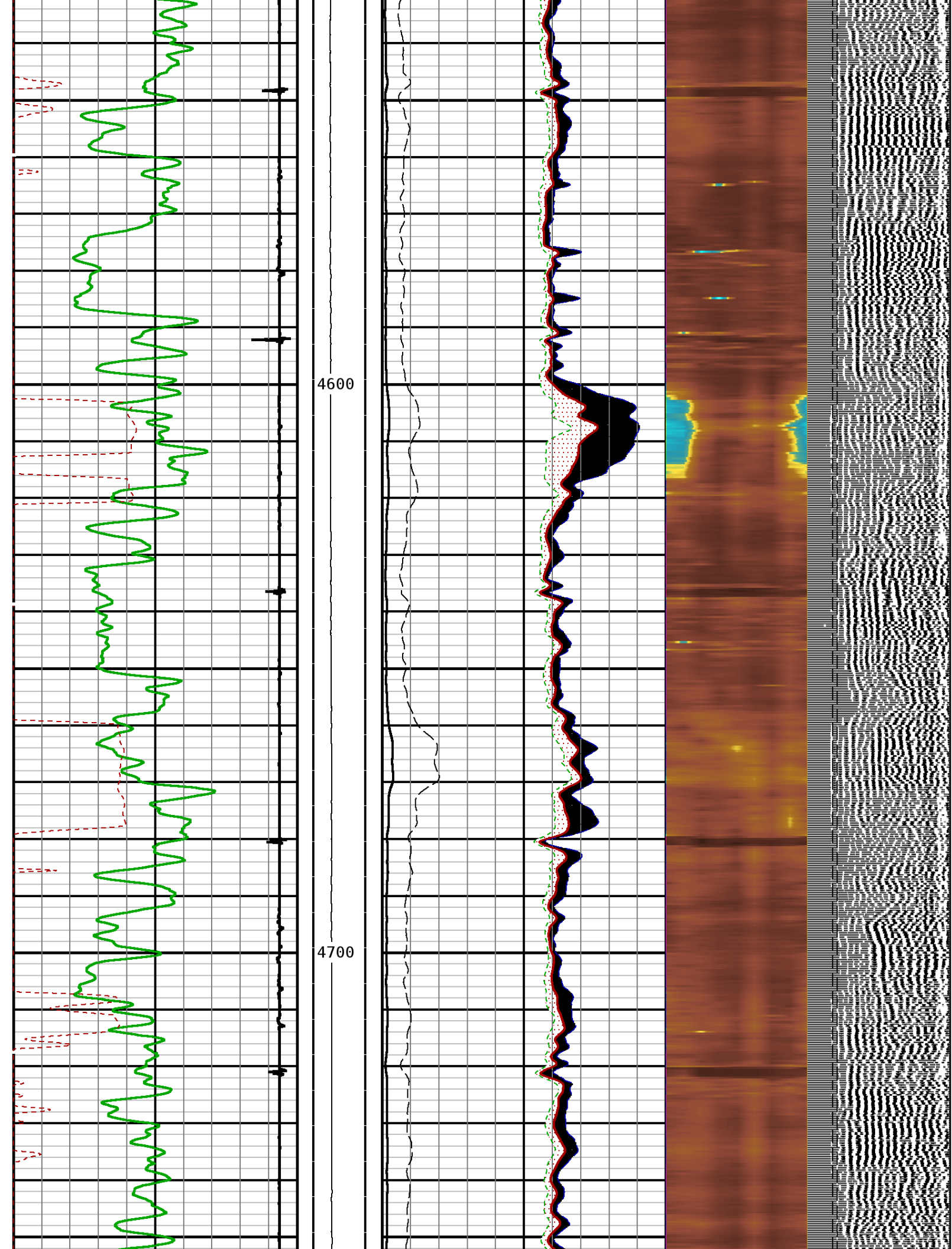
3900

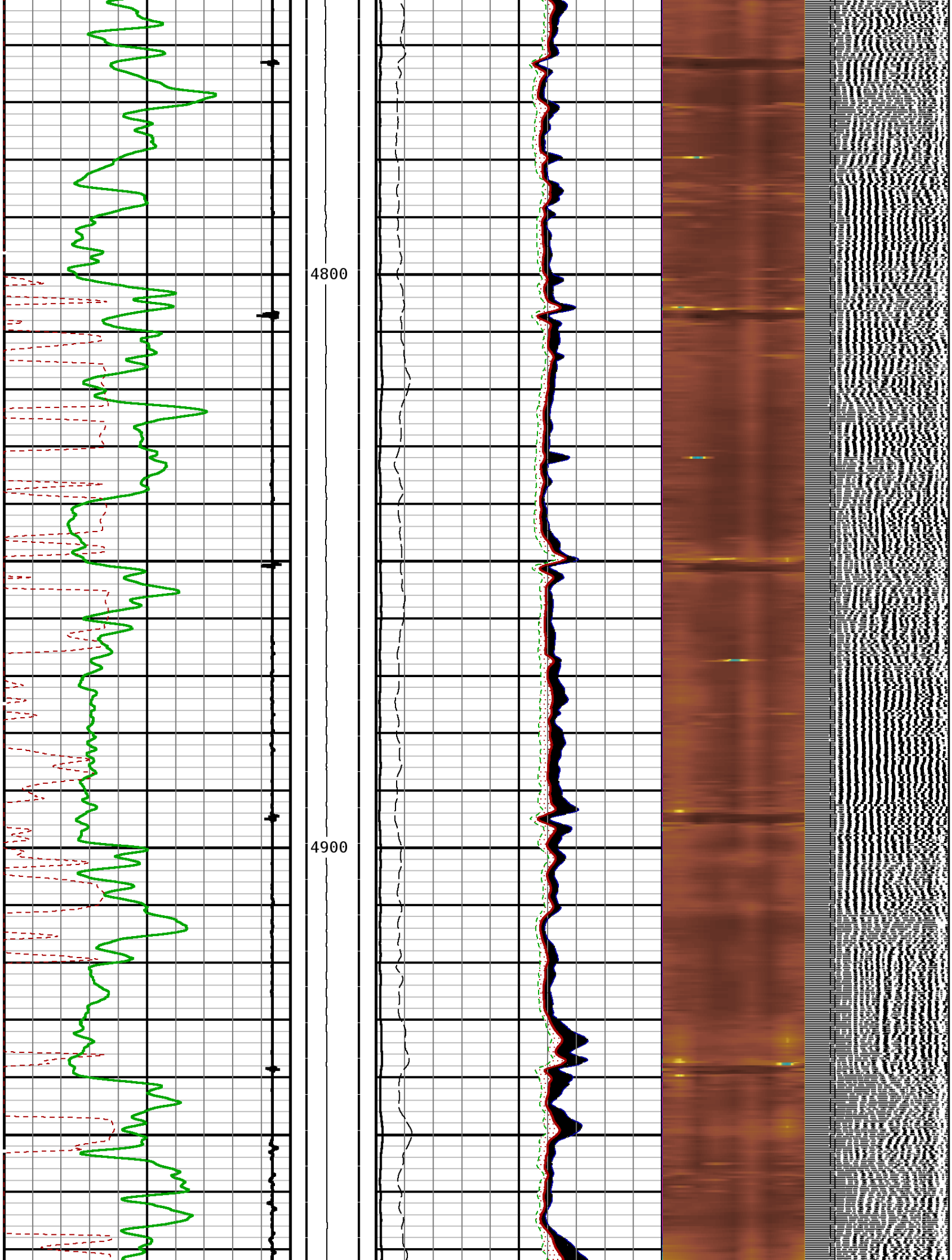
4000

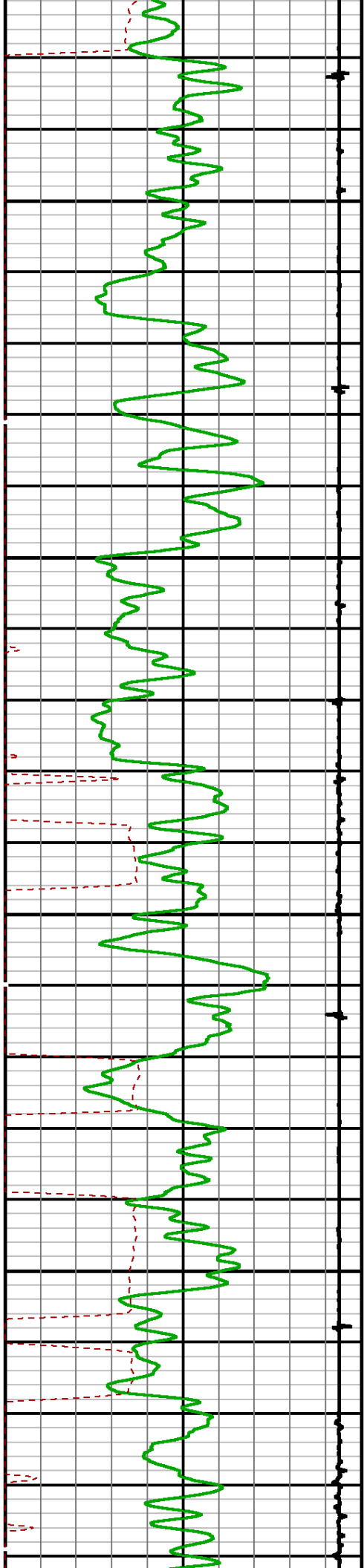






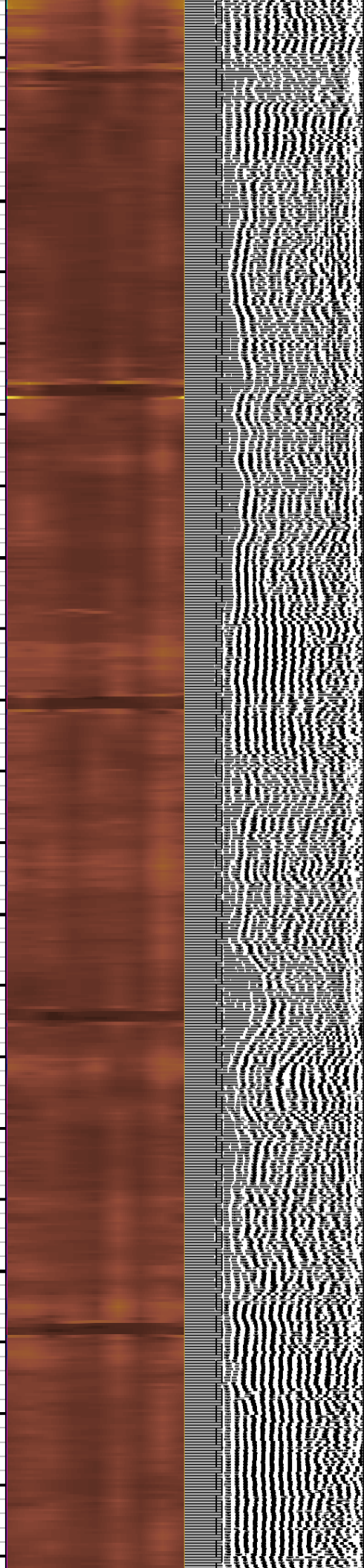
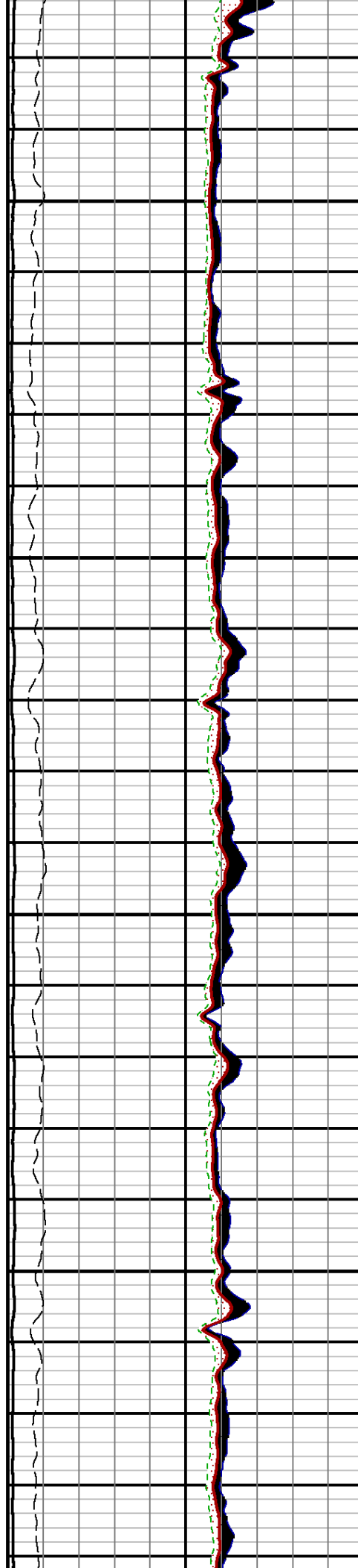


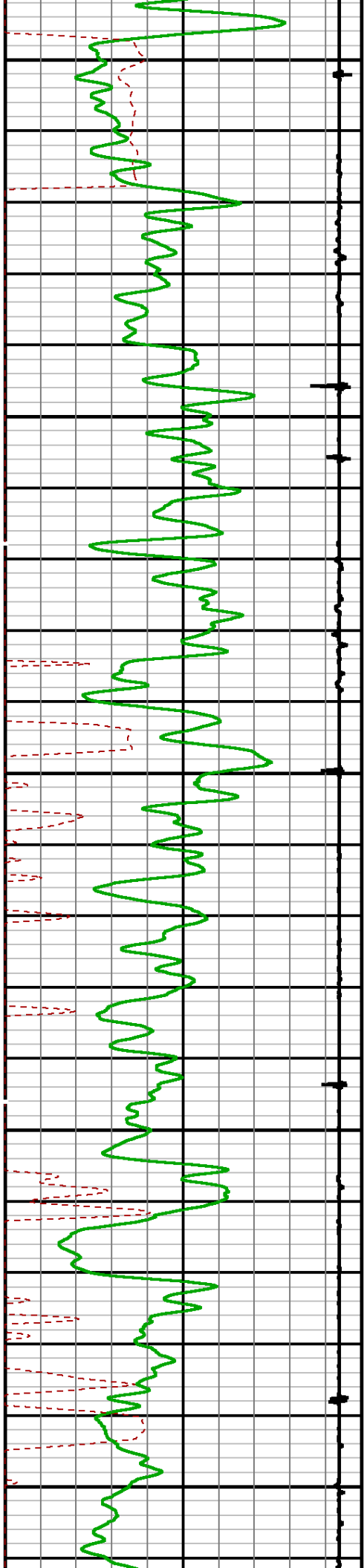




5000

5100

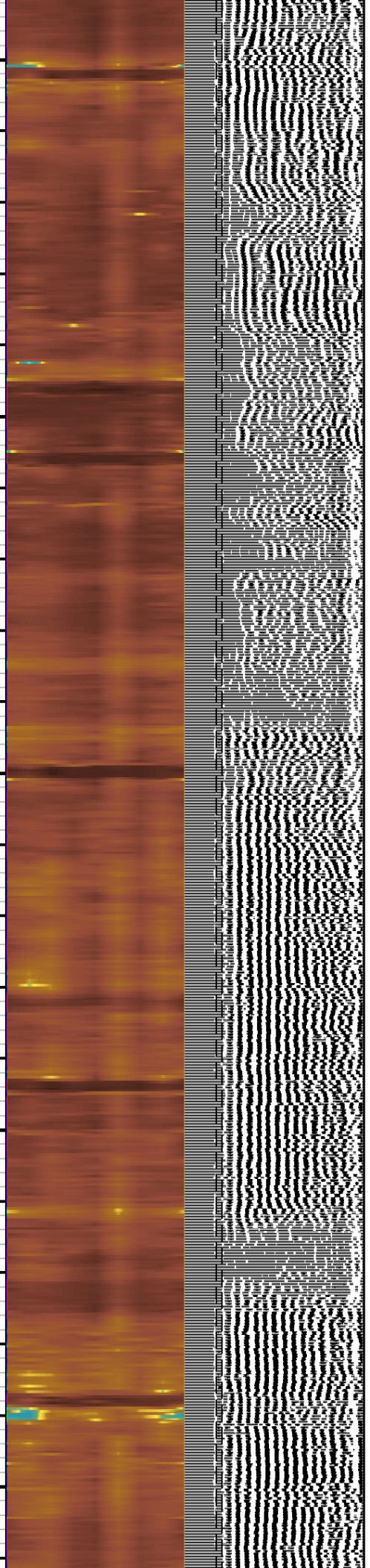
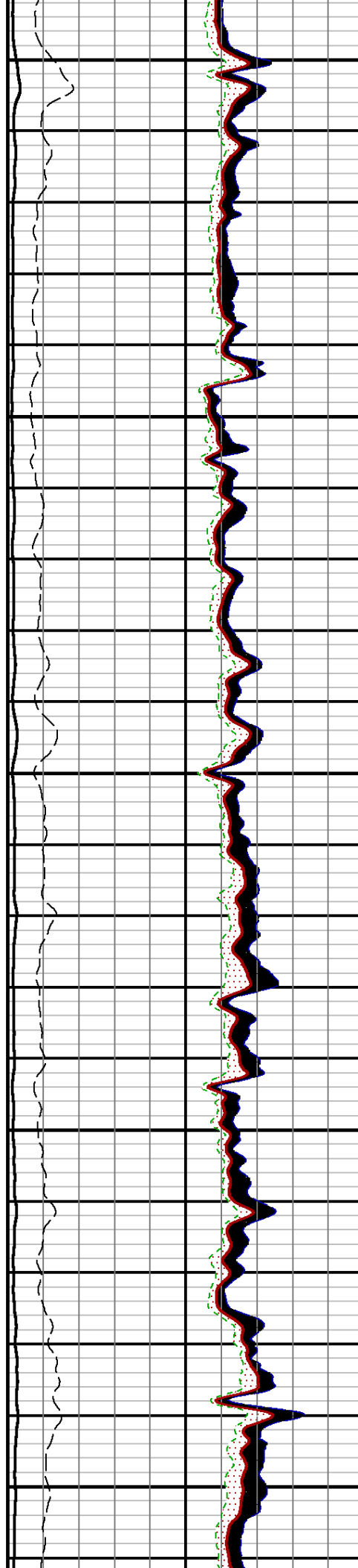


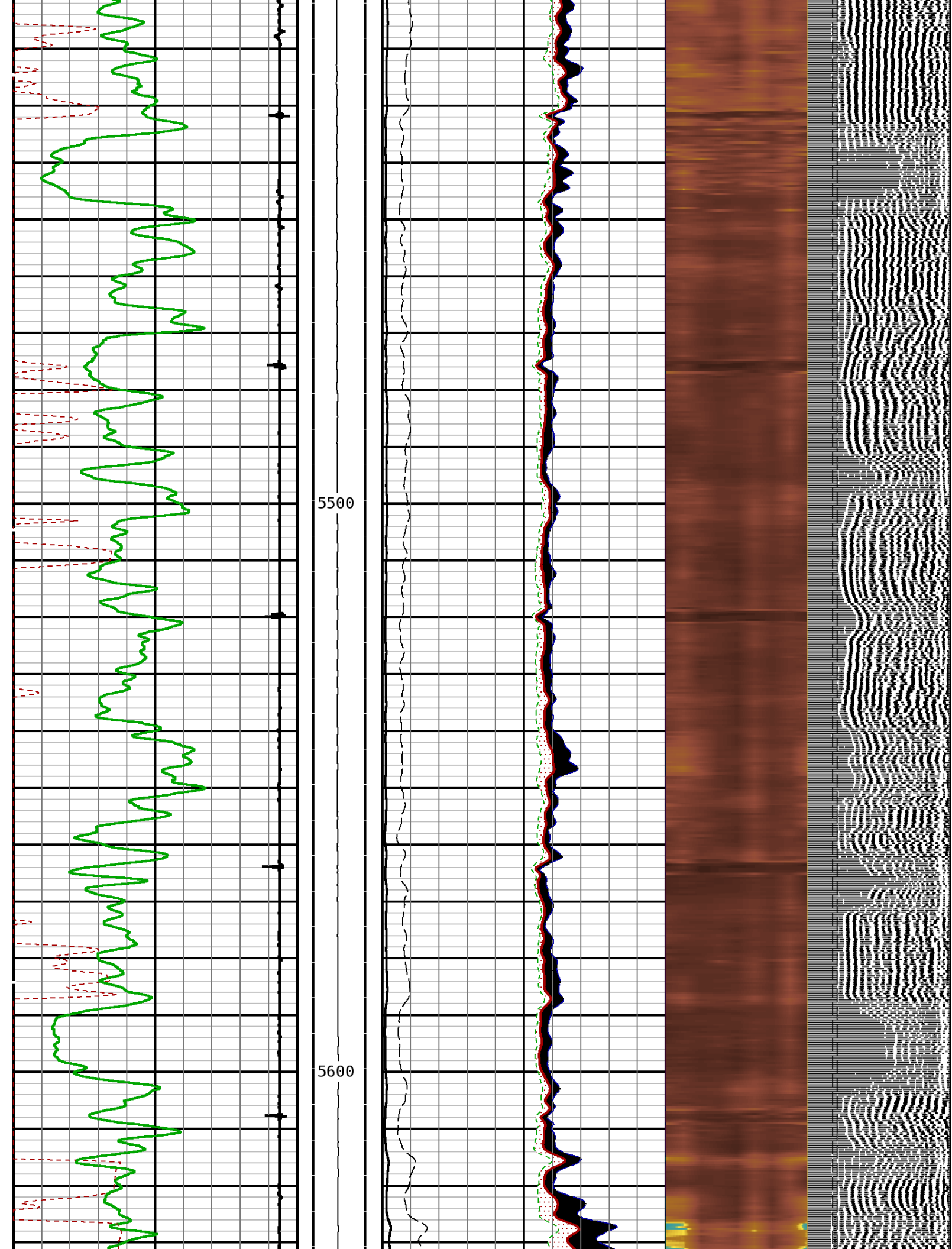



5200

5300

5400





TRAVEL TIME 3FT			Tension	AMPLITUDE 3FT			MIN ENERGY			VARIABLE ENERGY			VARIABLE DENSITY				
302	Microseconds	205		0	3000	0	mv	100	0	mv	100	0	mv	80	200	us	1200
Gamma Ray				AMPLITUDE 3FT			AVG ENERGY						FREE PIPE GATE				
0	API	200		0			mv	20	0	mv	100	200			us	1200	
Collar Locator						MAX ENERGY						FREE PIPE GATE					
-1800	Millivolts	120				0		100				200	us	1200			

START DEPTH: **5730.8** DIRECTION: **UP** DATE: **07/01/2014** TIME: **08:32** MODE: **ORIGINAL**
RECOMPUTED DATE: **07/01/2014** TIME: **08:32**

91408227 SBTMF

MAIN PASS

DEPTH SCALE: 5":100'

LOGGED VERSION: 2012.07.18.162"

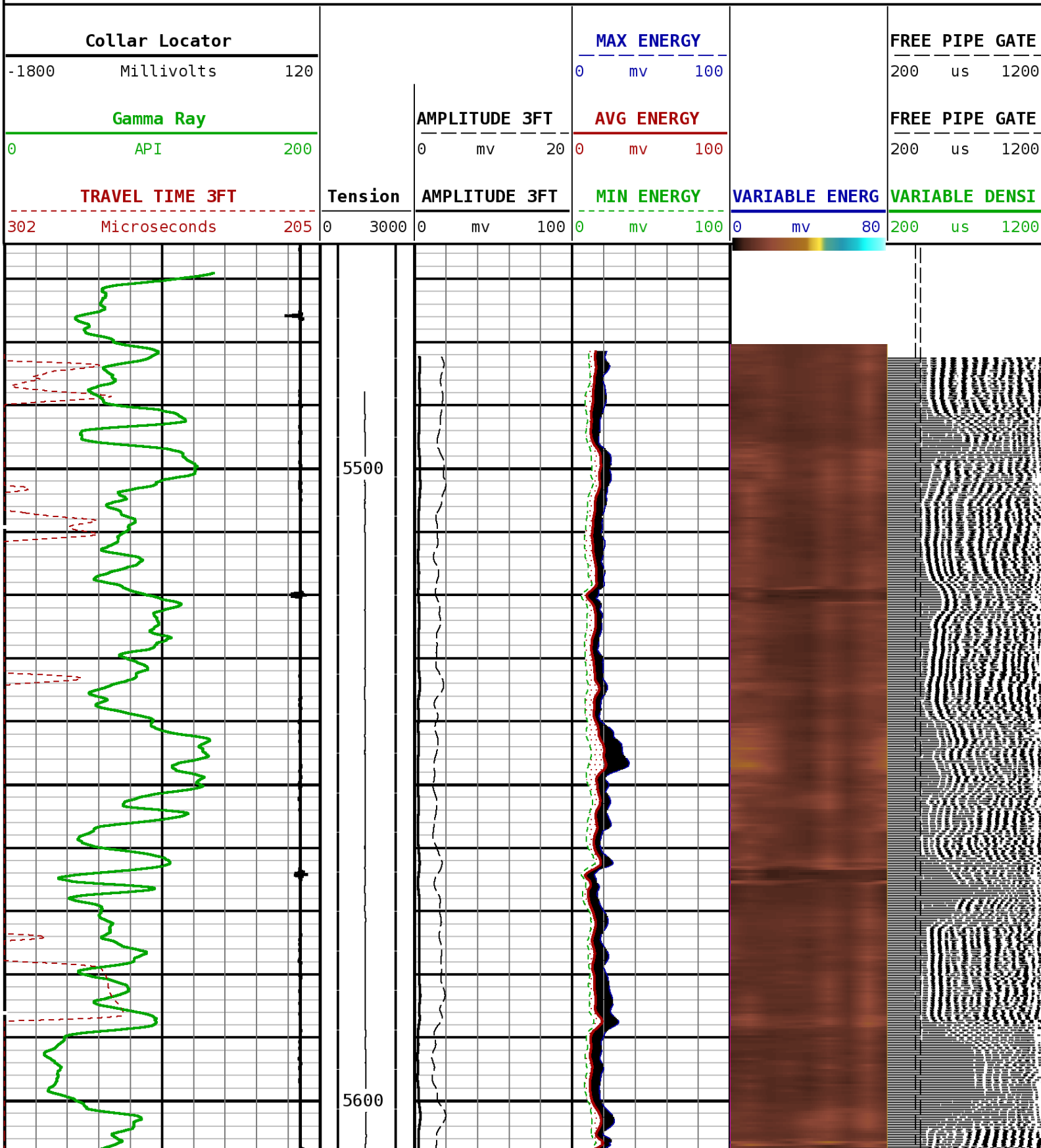
REMARKS

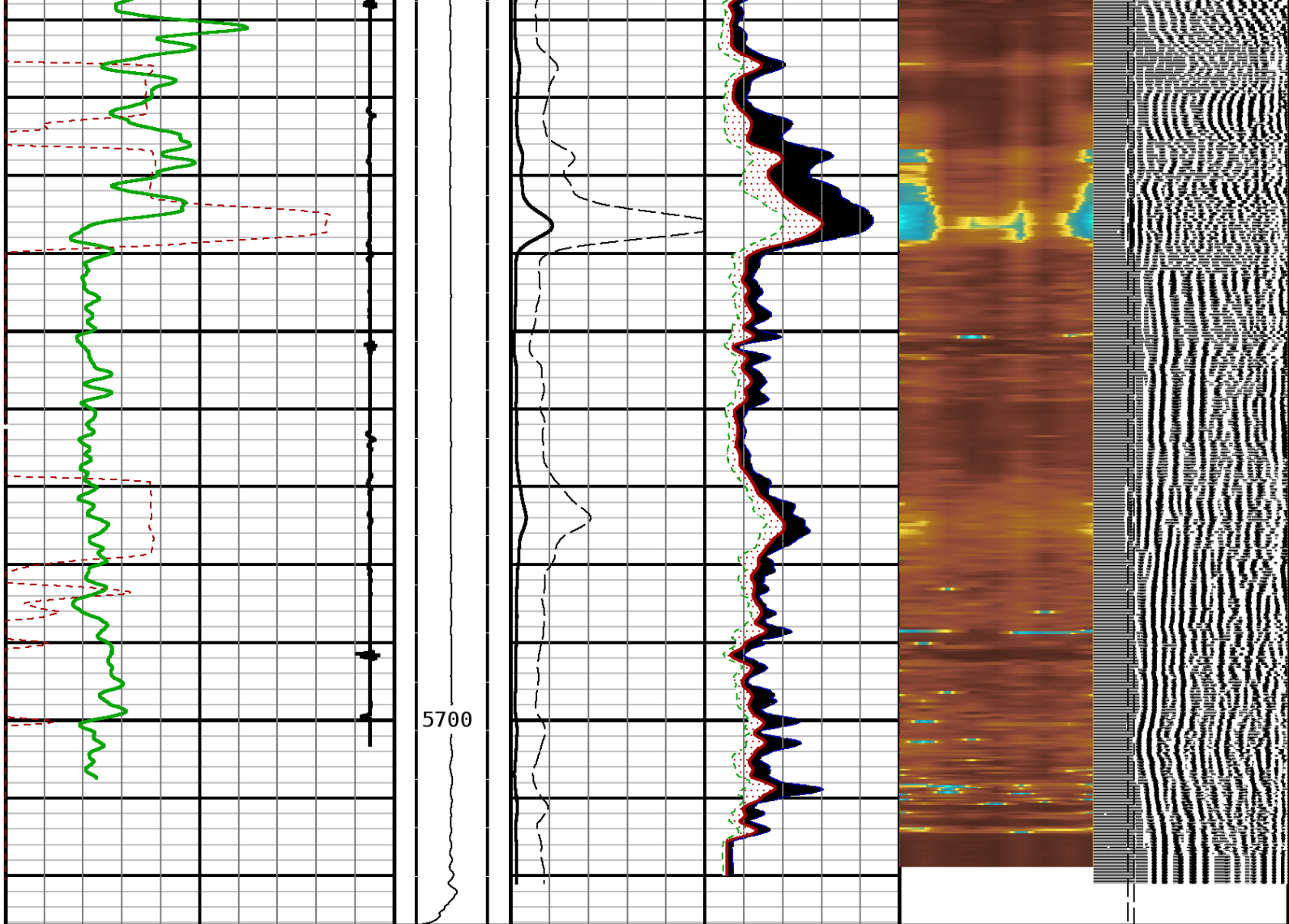
LOGGED WITH 0 PSI @ SURFACE

REPEAT PASS

91408227 SBTRF

FINISH DEPTH: 5487.9 Feet DIRECTION: UP DATE: 07/01/2014 TIME: 08:36 MODE: ORIGINAL
 RECOMPUTED DATE: 07/01/2014 TIME: 08:36





TRAVEL TIME 3FT	Tension	AMPLITUDE 3FT	MIN ENERGY	VARIABLE ENERGY	VARIABLE DENSI
302 Microseconds 205	0 3000	0 mv 100	0 mv 100	0 mv 80	200 us 1200
Gamma Ray		AMPLITUDE 3FT	AVG ENERGY		FREE PIPE GATE
0 API 200		0 mv 20	0 mv 100		200 us 1200
Collar Locator			MAX ENERGY		FREE PIPE GATE
-1800 Millivolts 120			0 mv 100		200 us 1200

START DEPTH: 5726.4 DIRECTION: UP DATE: 07/01/2014 TIME: 08:36 MODE: ORIGINAL
 RECOMPUTED DATE: 07/01/2014 TIME: 08:36

91408227 SBTRF

REPEAT PASS

DEPTH SCALE: 5":100'

LOGGED VERSION: 2012.07.18.162"

1 7/16 Adapter Head

Weight 2.2 LB.
Length 2.54
Max. Diameter 1.44 IN.

Total Stack Weight 223.0 LBS. in air
Total Stack Length 27.83 FT.

Slim Hole Centralizer

Weight 15 lbs
Length 2.49 FT.
Max. Diameter 2.750 IN.

Collar Locator

Weight 39.8 LBS.
Length 3.40 FT.
Max. Diameter 2.75 IN.

Slim Hole Gamma Ray

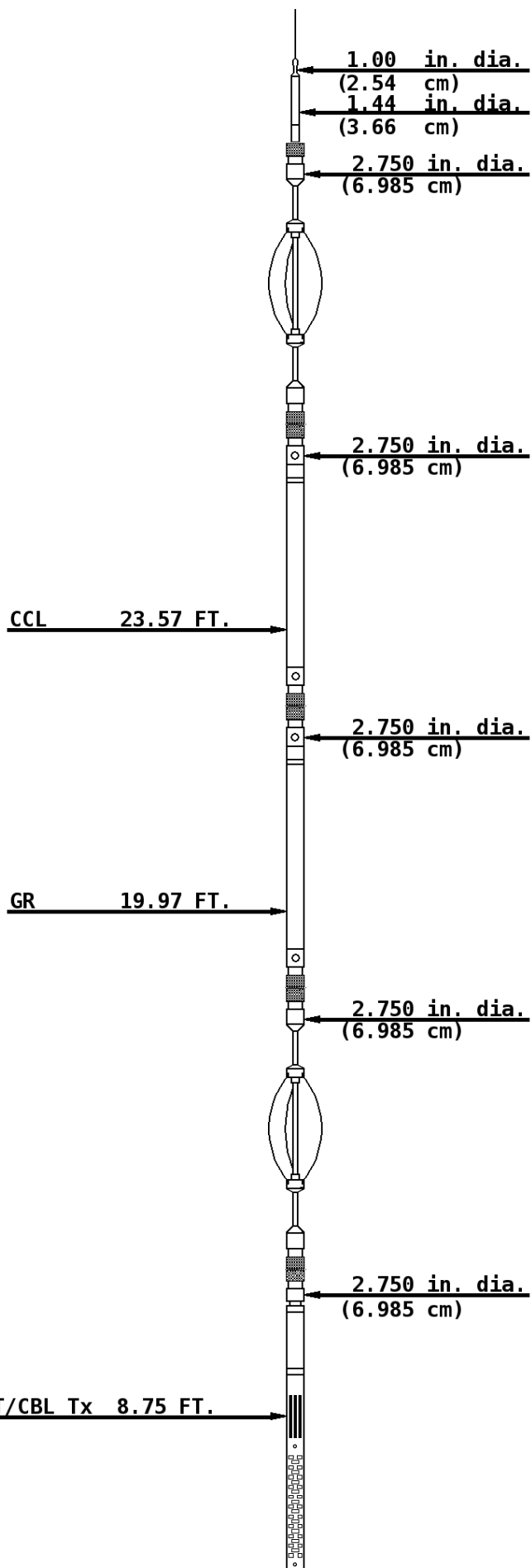
Weight 39.8 LBS.
Length 4.71 FT.
Max. Diameter 2.750 IN.

Slim Hole Centralizer

Weight 22 LBS.
Length 3.08 FT.
Max. Diameter 2.750 IN.

Sector Bond

Weight 89.2 LBS>
Length 10.32 FT.
Max. Diameter 2.750 IN.



SBT Rx 7.77 FT.

3' Rx 7.28 FT.

5' Rx 6.28 FT.

2.750 in. dia.
(6.985 cm)

Slim Hole Centralizer

Weight 15.0 LBS.
Length 2.82 FT.
Max. Diameter 2.750 IN.

Tool Zero

COMPANY URSA OPERATING COMPANY

WELL BAT 13C-24-07-96

FIELD BATTLEMENT MESA

COUNTY GARFIELD

STATE COLORADO



Weatherford®